

# CERTIFICATE OF LOCATION OF GOVERNMENT CORNER

County of Anoka

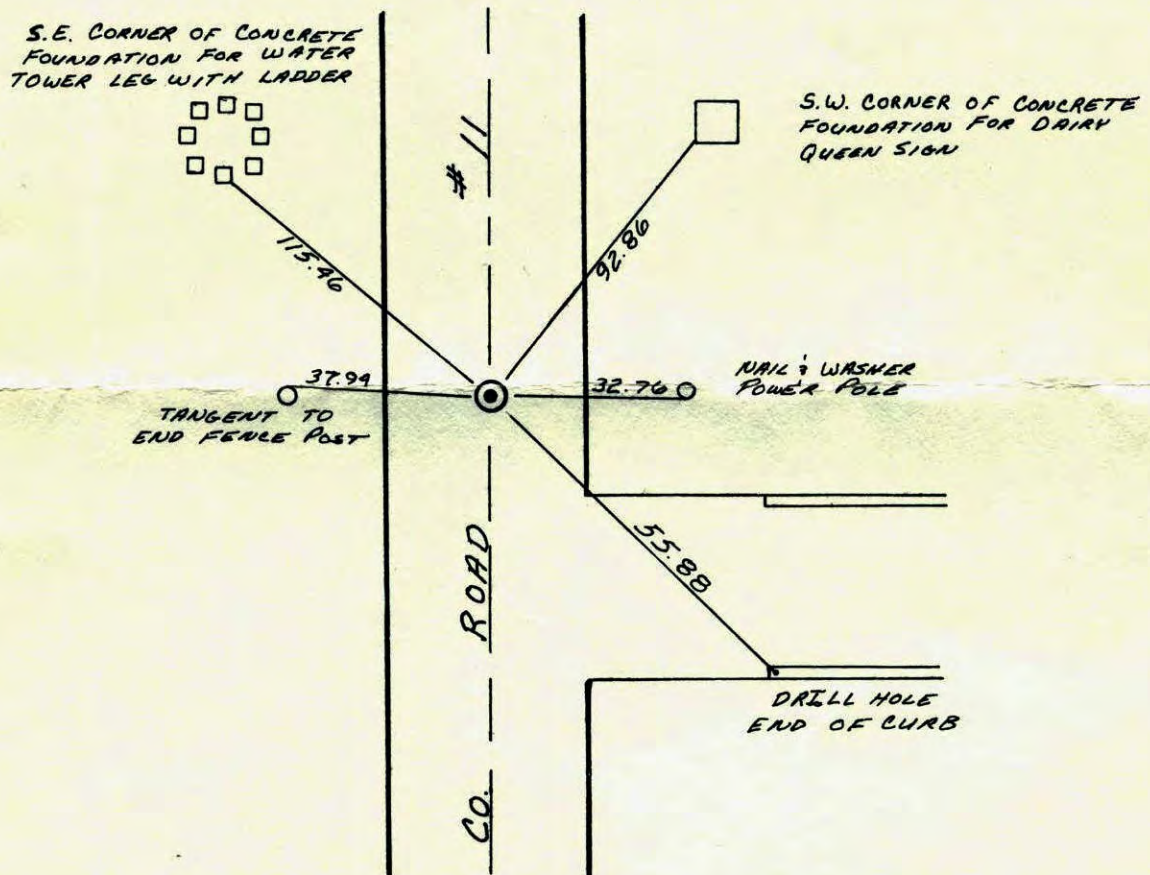
State of Minnesota

CENTER Corner of Sec. 13 Township 31 Range 24

I hereby certify that on the \_\_\_\_\_ day of \_\_\_\_\_, 19\_\_\_\_, I found the described corner which was evidenced by \_\_\_\_\_

and I further certify that to perpetuate the location of said corner, I did, at the exact location thereof, place a permanent marker consisting of BRIDGE SPIKE

which reference or witness monuments are located in the manner following:



Revised date	By
6-12-66	H.L. D.P.
7-1-70	D.P. R.B.
7-11-74	R.F. N.D. D.D.
6-22-77	R.S. S.B. J.S.
7-9-80	B.S. P.R. P.H.
7-22-83	R.R. J.B.
2-6-84 <small>REDRAWN</small>	R. KREUSER

Minnesota State Plane Coordinates  
South Zone

Y \_\_\_\_\_ X \_\_\_\_\_

County Surveyor \_\_\_\_\_

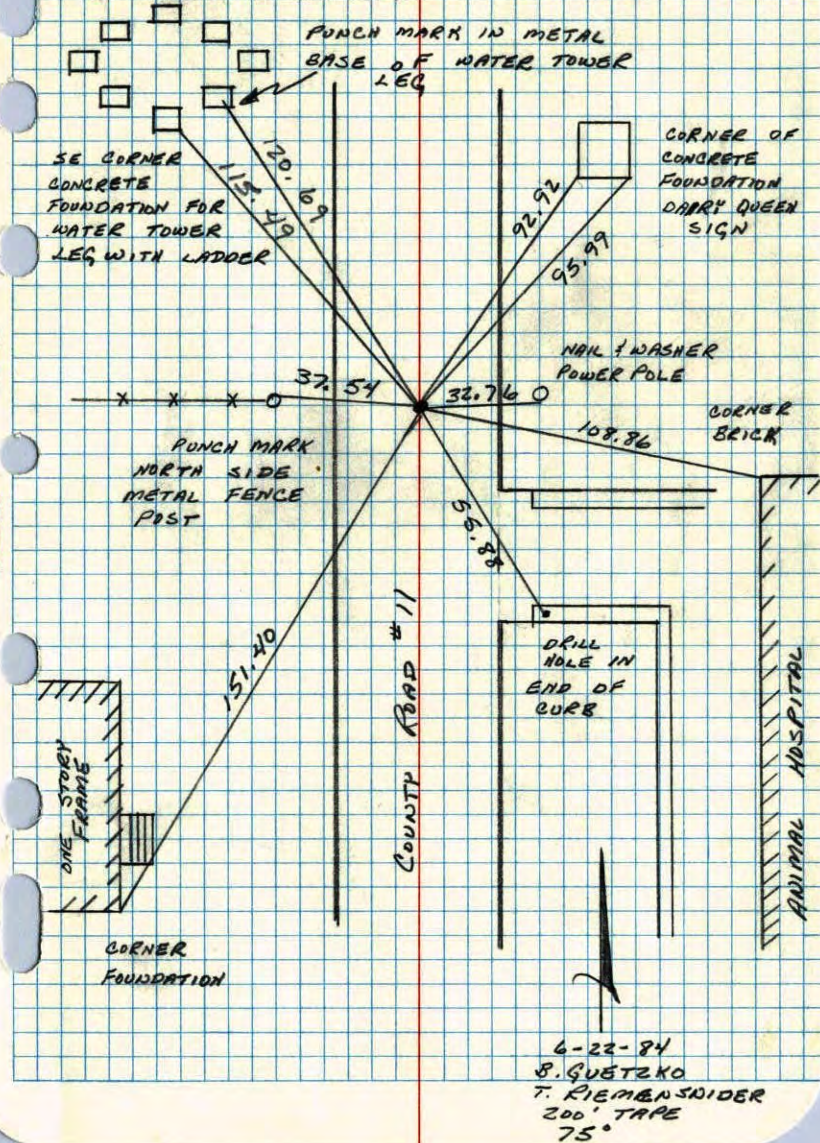
Date \_\_\_\_\_

Registered Land Surveyor No. \_\_\_\_\_

# CONSTRUCTION TIES

CENTER OF SEC 13 T 31 R 24

RETIED CORNER FOR CURB CONSTRUCTION  
TO DRIVEWAY ENTRANCE TO ANIMAL HOSPITAL.  
CORNER IS BRIDGE SPIKE AT SURFACE  
OF COUNTY ROAD 11



NO. 448

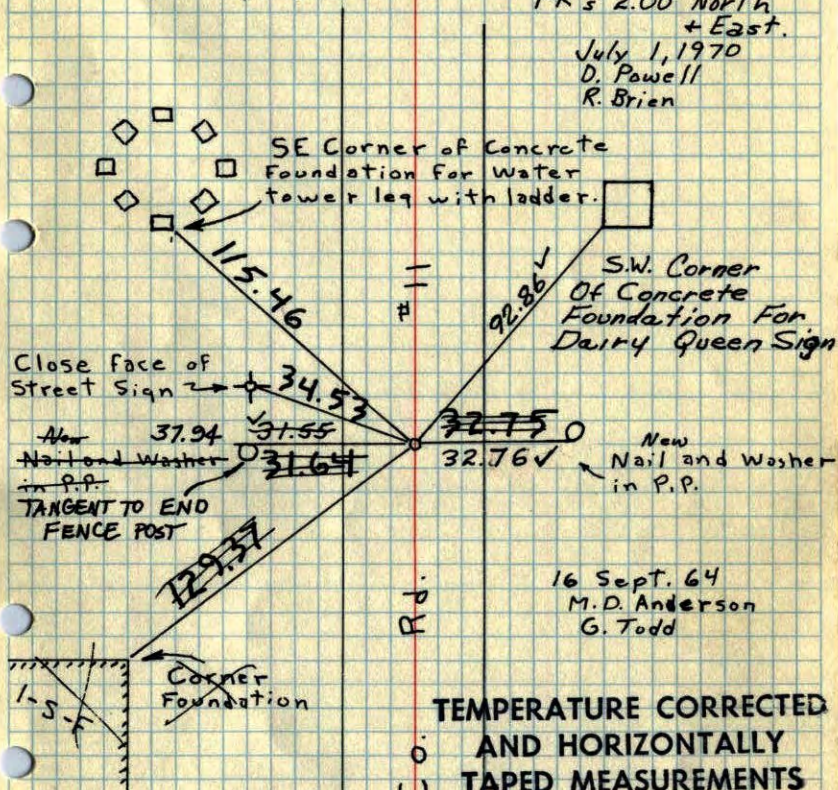
TELEPHONE

Center Sec. 13, T31, R24

Found PK Spike down 0.1' From N.C. Hoiums ties.

Set PK spike in new mat  
Set Bridge Spike in new mat.

PK's 2.00' North + East.  
July 1, 1970  
D. Powell  
R. Brien



TEMPERATURE CORRECTED  
AND HORIZONTALLY  
TAPED MEASUREMENTS

TIE CHECK JUNE 22, 1977 P. SPILWALD S. BRIEN J. STEPHENS	TIE CHECK 7-9-80 B. STEPHENS P. ROSS P. HORNBY
--	--

Tie Check  
June 12, 1966  
H. Larson  
D. Potter

Tie Check  
July 11, 1974  
R. Farmer  
N. D.  
D. D.

ROLAND W. ANDERSON  
COUNTY SURVEYOR  
ANOKA COUNTY, MINNESOTA

Center Sec. 13, T31, R24

Found PK Spike down 0.1' From N.C. Hoium's ties.

Set PK spike in new mat

Set Bridge Spike in new mat.

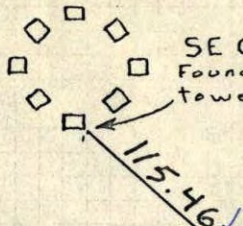
PK's 2.00' North + East.

7/1/76

110-88° ✓

D. Powell  
R. Brien

SE Corner of Concrete Foundation for Water tower leg with ladder.



Close Face of Street Sign

34.53

New Nail and Washer in P.P.

31.55

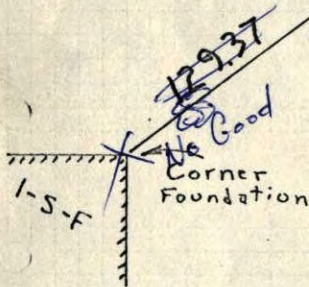
32.75

32.76

New

Nail and Washer in P.P.

16 Sept. 64  
M.D. Anderson  
G. Todd



Tie Check  
June 12, 1966  
H. Larson  
D. Potter

129.37  
100.39  
28.98

TEMPERATURE CORRECTED  
AND HORIZONTALLY  
TAPED MEASUREMENTS

ROLAND W. ANDERSON  
COUNTY SURVEYOR  
ANOKA COUNTY, MINNESOTA

S.A.P. 02-611-04

Center Sec. 13-T31-R24

found P.K. nail down 0.1' from ties by N.C. Hoium

S.E. cor. conc. foundation for leg with ladder for water tower

Sept. 16, 1969  
M.D. Anderson  
G. Todd  
Temp. 75°  
Tape #1



close face st. sign

34.53

P.P. NEW

31.64

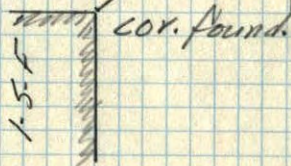
32.75

P.P. NEW

31.64

129.37

100.39



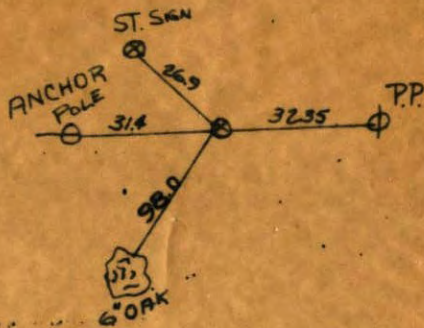
COR. FOUND.

4-96

CENTER SEC 13-31-24

13

(105-11)



N. C. HOIUM  
AND ASSOCIATES, INC.  
LAND SURVEYORS  
SHOPPING CENTER - 1101 1/2 ST  
ANOKA, MINNESOTA