

CERTIFICATE OF LOCATION OF GOVERNMENT CORNER

County of Anoka

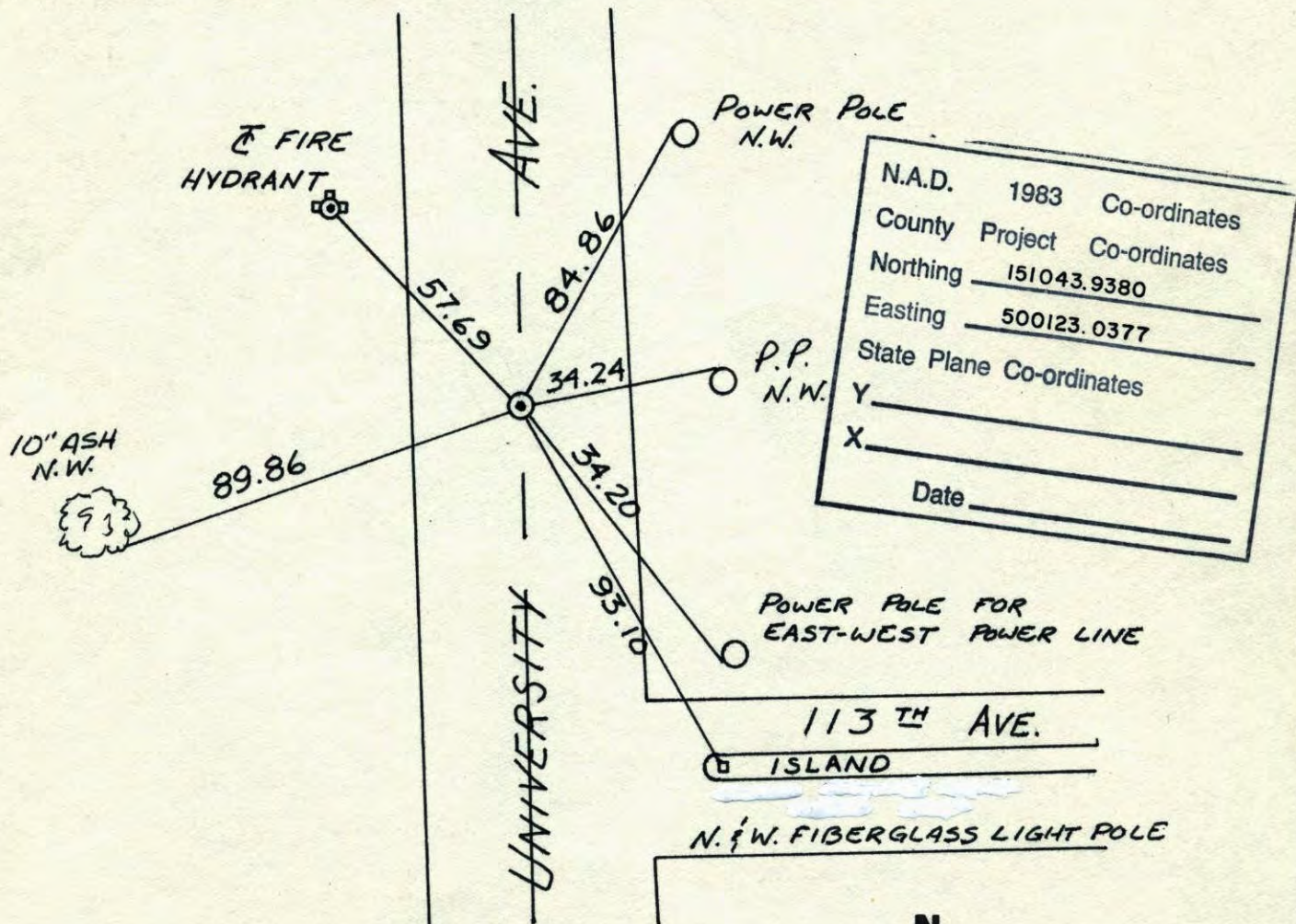
State of Minnesota

EAST QTR. Corner of Sec. 13 Township 31 Range 24

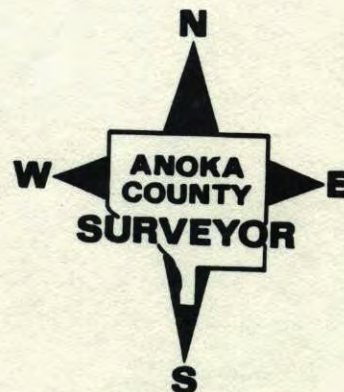
I hereby certify that on the 24 day of FEB., 1960, I found the described corner which was evidenced by CONCRETE

and I further certify that to perpetuate the location of said corner, I did, at the exact location thereof, place a permanent marker consisting of CAST IRON MON.

which reference or witness monuments are located in the manner following:



Revised date	Revised date	Revised date
6-18-88		
8-3-94		
10-12-98		

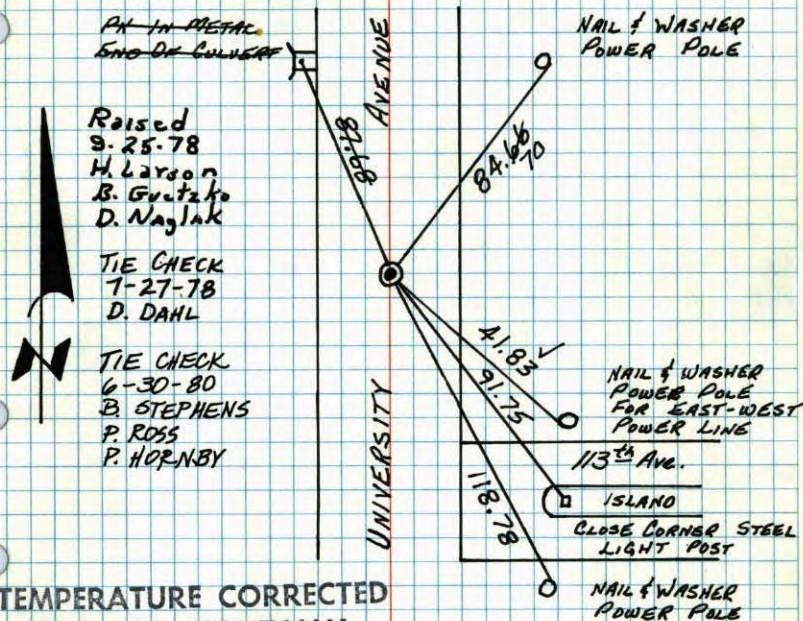


E 1/4 COR. SEC. 13 - T31-R24

CONCRETE MONUMENT DOWN 14". CORNER 25'±
NORTH OF EAST-WEST POWER LINE. REPLACED
IRON PIPE WITH CAST IRON MONUMENT FLUSH.
PK'S 2.00' NORTH AND EAST.

CONCRETE MONUMENT FOUND 24 FEB 60

CAST IRON MONUMENT FOUND SET 24 JUL 70



Raised
9-25-78
H. Larson
B. Guetzko
D. Naglak

TIE CHECK
7-27-78
D. DANL

TIE CHECK
6-30-80
B. STEPHENS
P. ROSS
P. HORNBY

TEMPERATURE CORRECTED
AND HORIZONTALLY
TAPED MEASUREMENTS

TIE CHECK
7/10/74
SET CAST IRON
MONUMENT OVER
CONCRETE (FLUSH)
R. FARMER

REDRAWN
JAN '77
B. GUETZKO

ROLAND W. ANDERSON
COUNTY SURVEYOR
ANOKA COUNTY, MINNESOTA

E 1/4 Corner Sec. 13 T31 R24

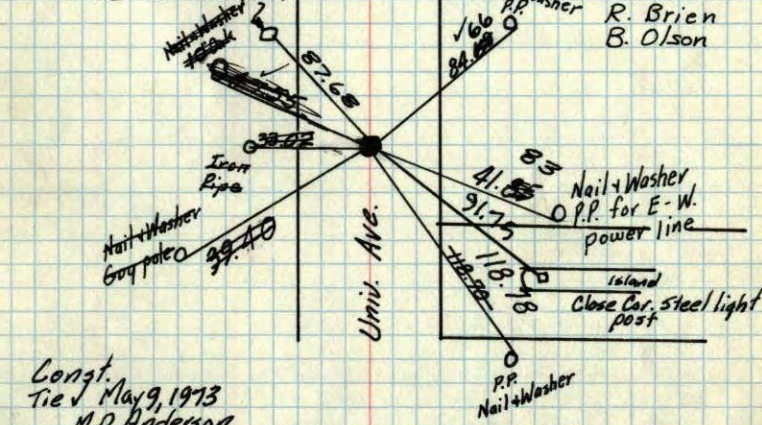
Con. Mon. down 14"

~~Iron Pipe centered over Mon.~~

Cor. 25'± N. of E-W power line
Replaced Iron Pipe with Cast Iron Monument
flush. PK Nails 2.00' North + East.

P.K. IN METAL
END OF CULVERT

July 24, 1970
D. Powell
R. Brien
B. Olson



Const.
Tie May 9, 1973
M.D. Anderson

SET CAST IRON MON.
OVER CONCRETE MON.
(FLUSH) 7/10/74
R. FARMER

TEMPERATURE CORRECTED
AND HORIZONTALLY
TAPED MEASUREMENTS

Feb. 24, 1960

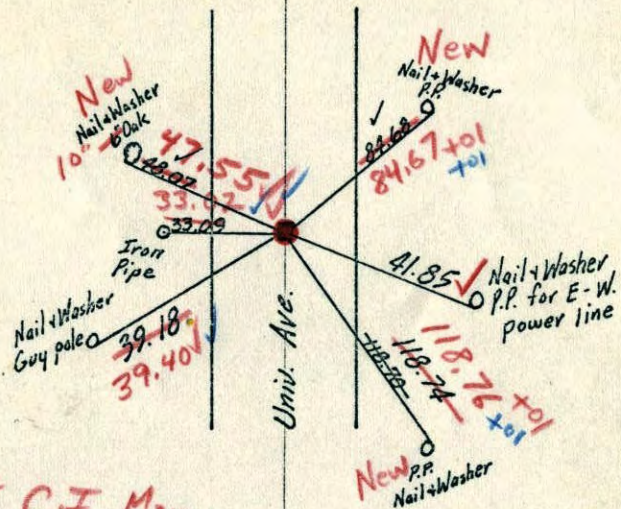
REDRAWN
SEE NEW
TIE BOOK

Retie 6/17/64
M. D. Anderson
R. Carlson

ROLAND W. ANDERSON
COUNTY SURVEYOR
ANOKA COUNTY, MINNESOTA

X
 E 1/4 Corner Sec. 13 T31 R24
 Con. Mon. down 14"
 Iron Pipe centered over Mon.
 Cor. 25' N. of E-W power line

56



Set C.I. Mon.
 flash in place of
 I.P. 7/24/70
 #11-850/
 D. Powell
 R. Brien
 B. Olson

TEMPERATURE CORRECTED
 AND HORIZONTALLY
 TAPED MEASUREMENTS

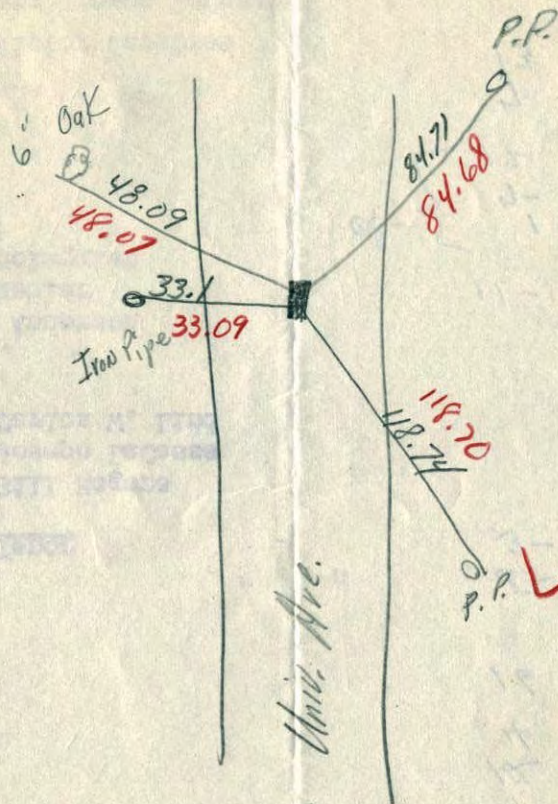
Feb. 24, 1960

Retie 6/17/64
 M. D. Anderson
 R. Carlson

ROLAND W. ANDERSON
 COUNTY SURVEYOR
 ANOKA COUNTY, MINNESOTA

35.28

E 1/4 Cor. Sec. 13 T31 R24
 Con. Mon down 14"
 Iron Pipe over center

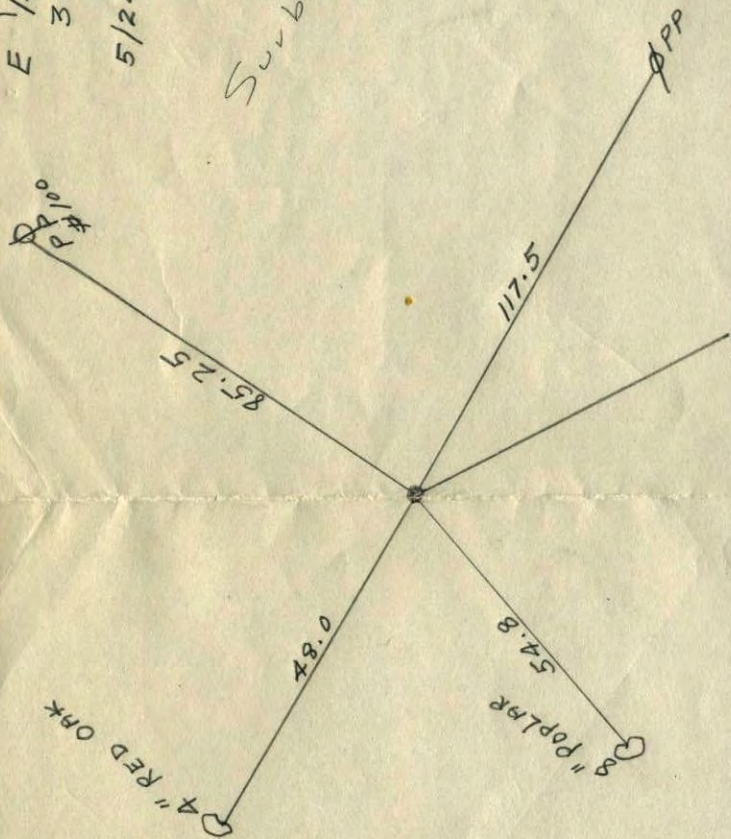


Temp. 19° F

E 1/4 SEC 13
31-24

5/24/56 SPIKE ✓

Suburban Eng.

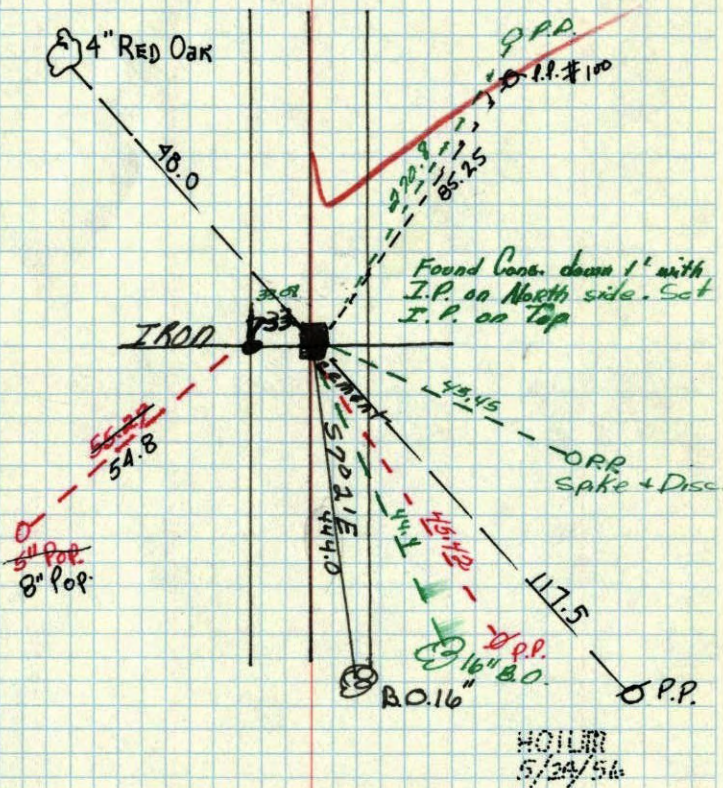


13

E 1/4 corner of Sec. 13 T. 31 R. 24
Concrete Monument down 6"

Retied By
Minder Eng. Co.
July 1955

Retied By
Harold Wilke
Sept. 1957



Nov. 11, 1944
Cartwright



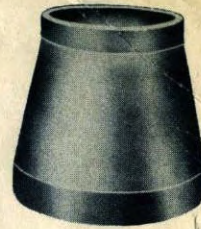
CONCRETE
PIPE

John E. Hopkins

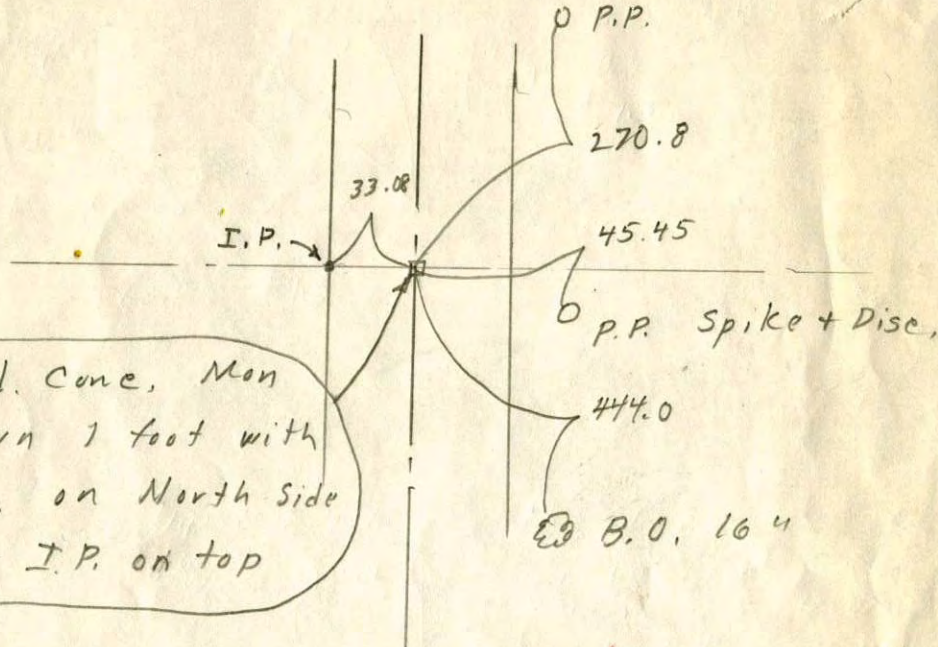
**NORTH STAR CONCRETE
CO.**

PHONE MINNEAPOLIS GR 7231
ST. PAUL ZE. 2127

PRECAST
MANHOLES



E 1/4 Cor of Sec 13-31-24



Fd. Cone, Mon
down 1 foot with
I.P. on North Side
Set I.P. on top



DRAIN TILE • SEWER PIPE • CATTLE PASS • CRIBBING