

CERTIFICATE OF LOCATION OF GOVERNMENT CORNER

County of Anoka

State of Minnesota

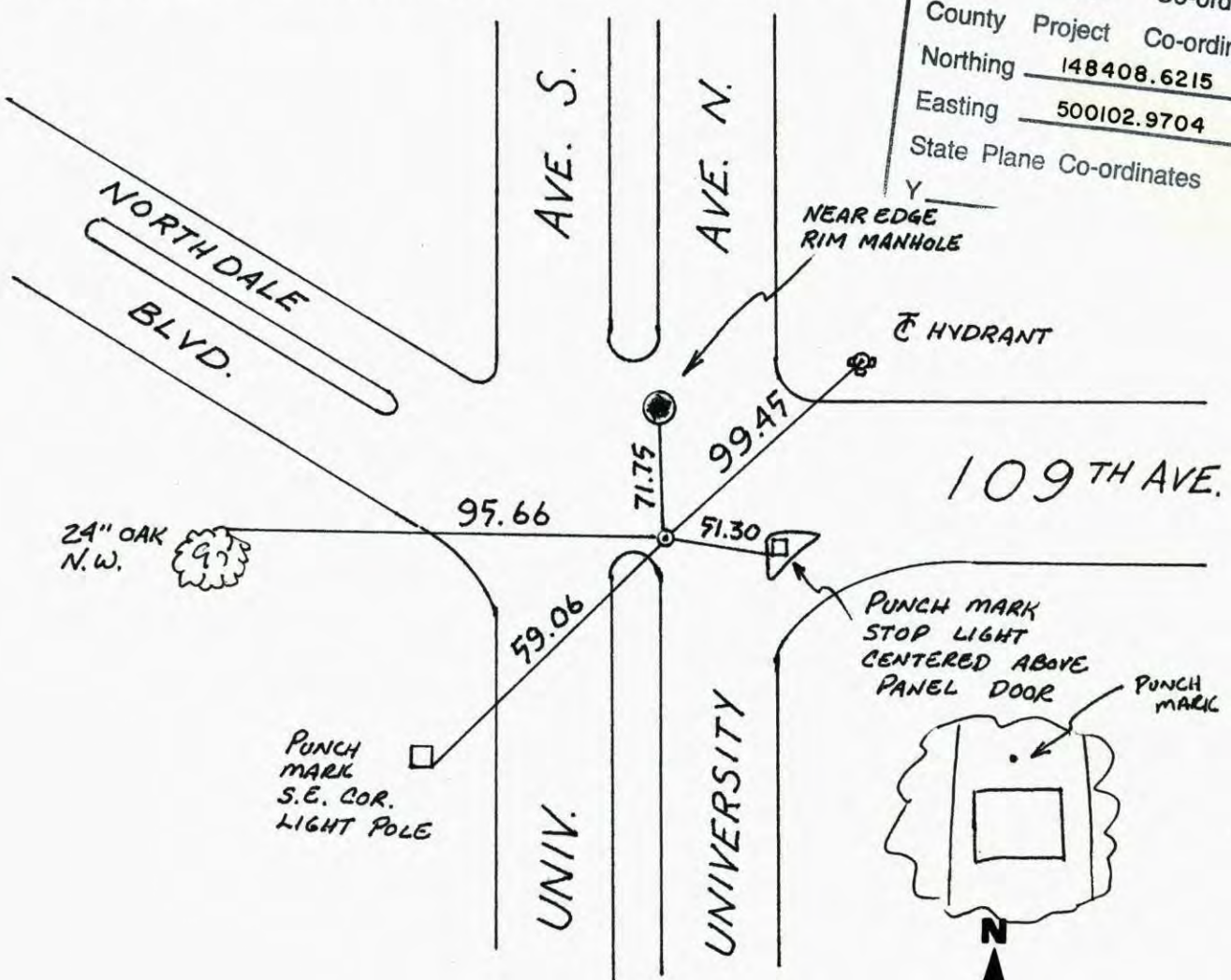
NORTHEAST Corner of Sec. 24 Township 31 Range 24

I hereby certify that on the 23 day of FEB., 1960, I found the described corner which was evidenced by GRANITE

and I further certify that to perpetuate the location of said corner, I did, at the exact location thereof, place a permanent marker consisting of CAST IRON MON.

which reference or witness monuments are located in the manner following:

N.A.D.	1983	Co-ordinates
County	Project	Co-ordinates
Northing	148408.6215	
Easting	500102.9704	
State Plane	Co-ordinates	
Y		

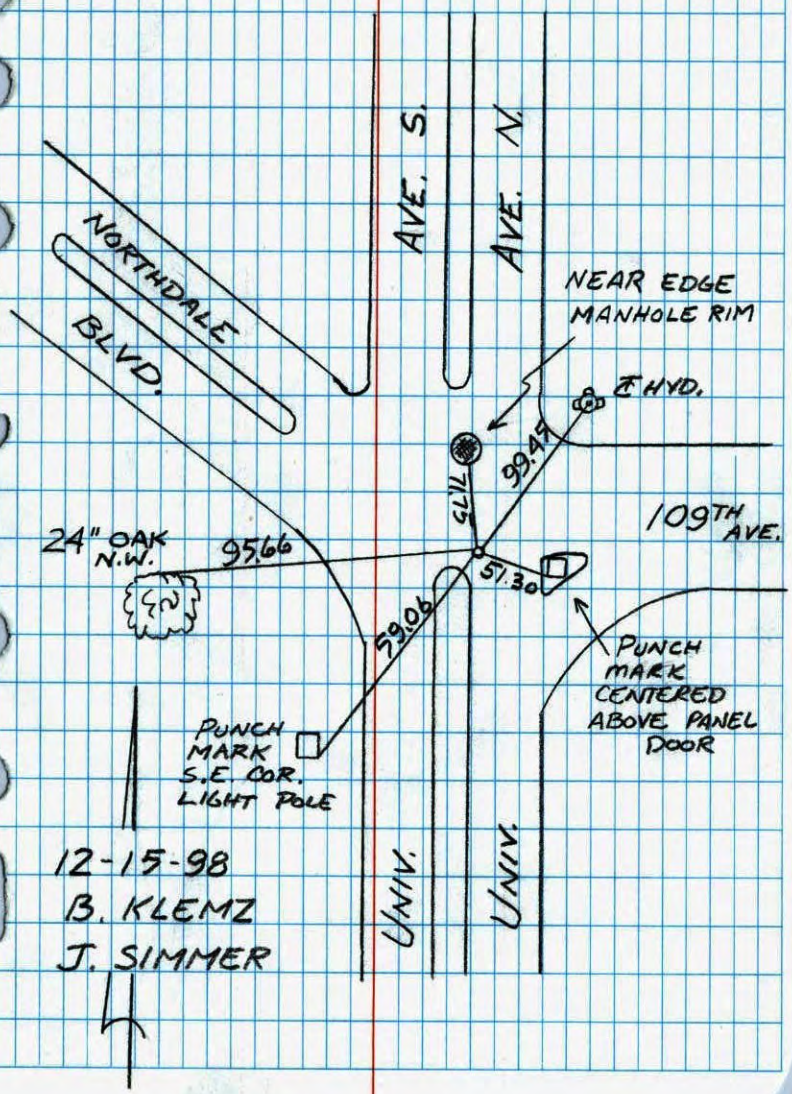


Revised date	Revised date	Revised date
8-8-94		
12-15-98		



NORTHEAST COR. SEC. 24 T-31 R-24
RETIED CAST IRON MON.

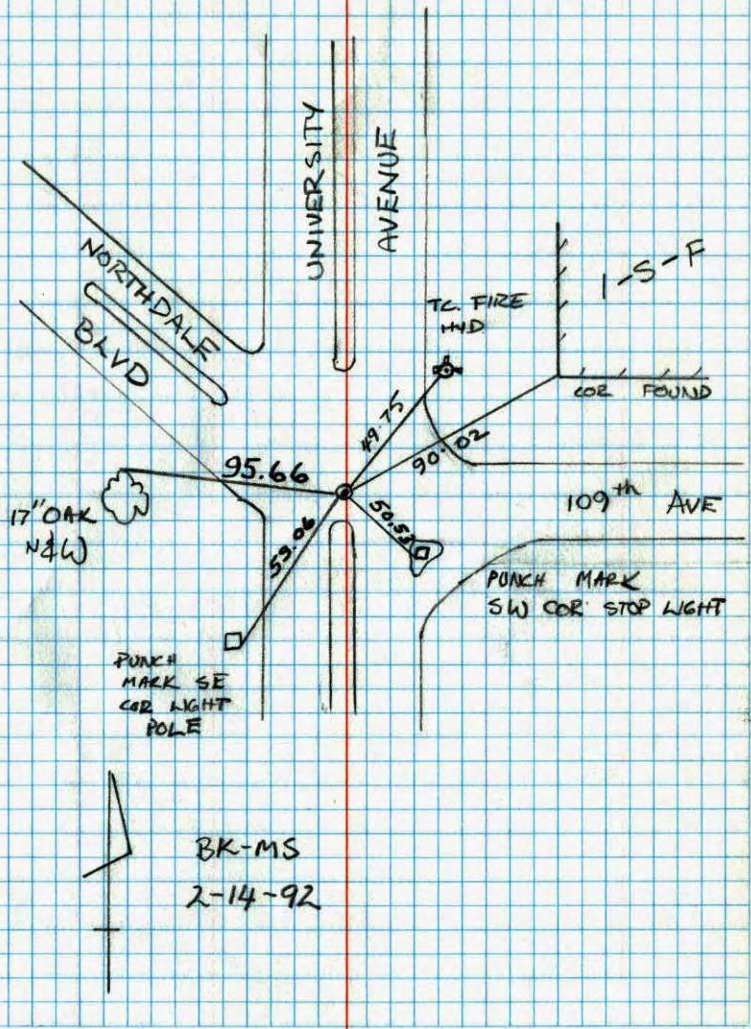
NO. 446
NATIONAL PRINTFAST



12-15-98
B. KLEMZ
J. SIMMER

NE 1/4 COR SECT 24 T 31 R 24
RETIED CAST IRON MONUMENT

NO. 446
NATIONAL PRINTFAST



BK-MS
2-14-92

SET C.1. 10-28-86
N.L.

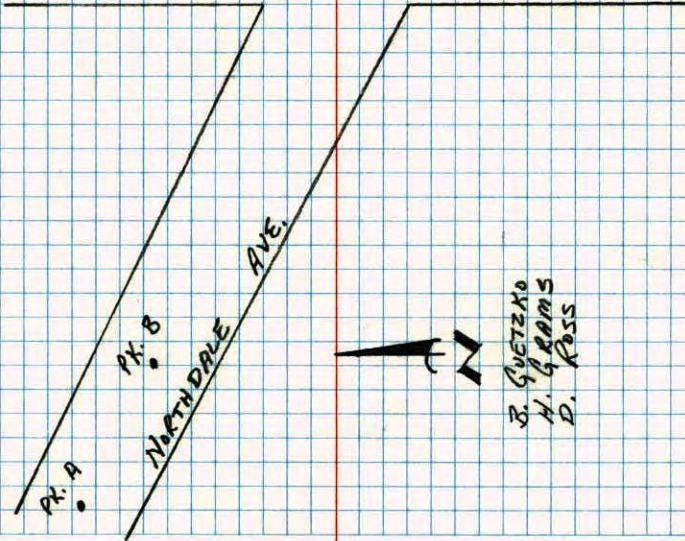
CONSTRUCTION TIES NE COR. SEC 24 T31 R24

ALL PK'S ARE 180°
ON LINE WITH NE
CORNER SEC. 24

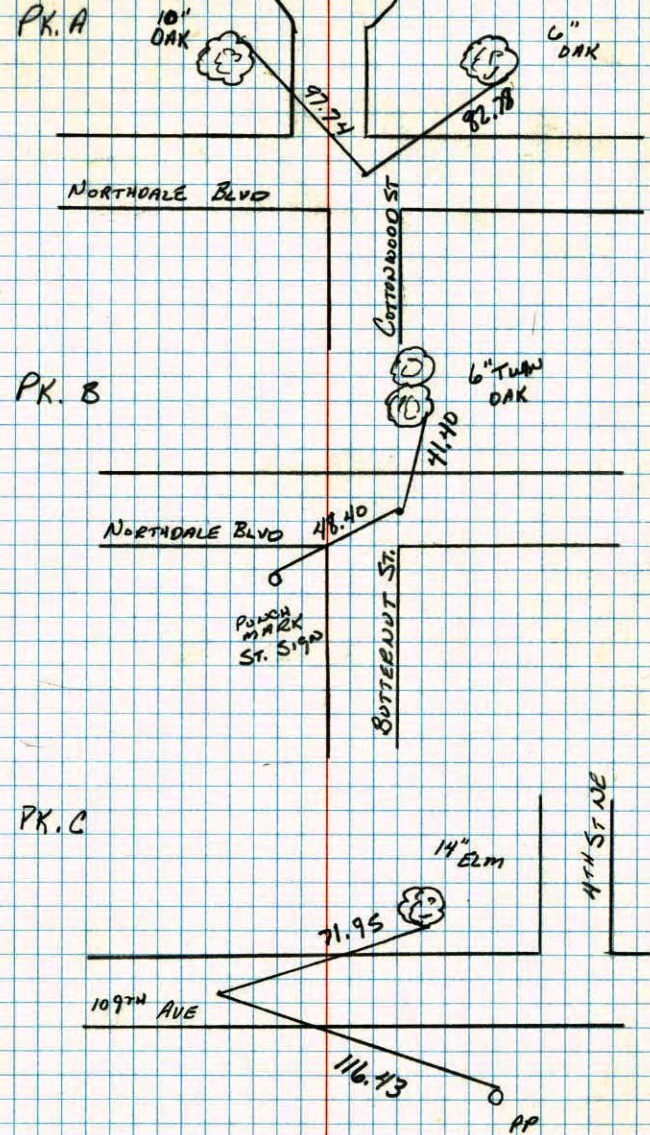
PK.	DISTANCES FROM NE COR. TO PK'S
PK. A	1257.24
PK. B	915.25
PK. C	200.02
PK. D	244.89
PK. E	374.93
PK. F	882.09

NO. 448

TELEPHONE



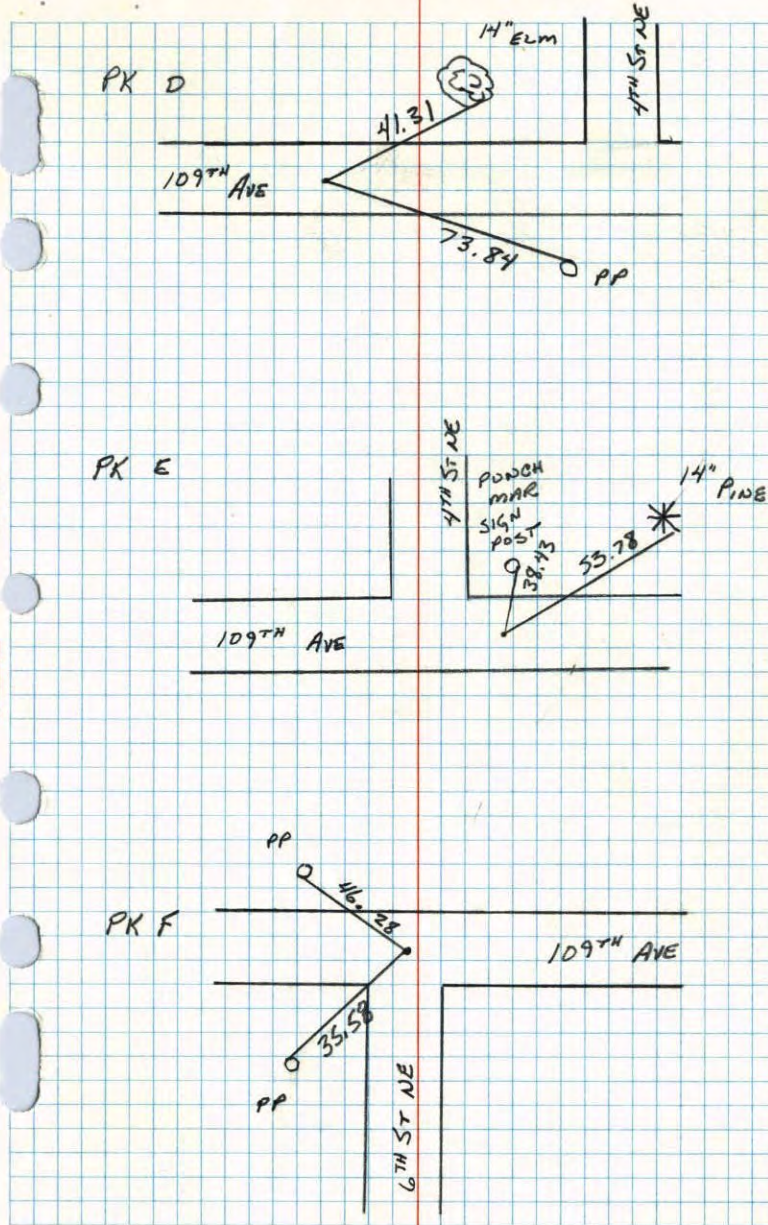
TIES FOR PK'S TO SET NE COR SEC 24 T31 R24



NO. 448

TELEPHONE

TIES FOR PK'S TO SET NE COR
SEC 24 T31 R24



NO. 448

TEMPERATURE

NE Cor. Sec. 24, T31, R24

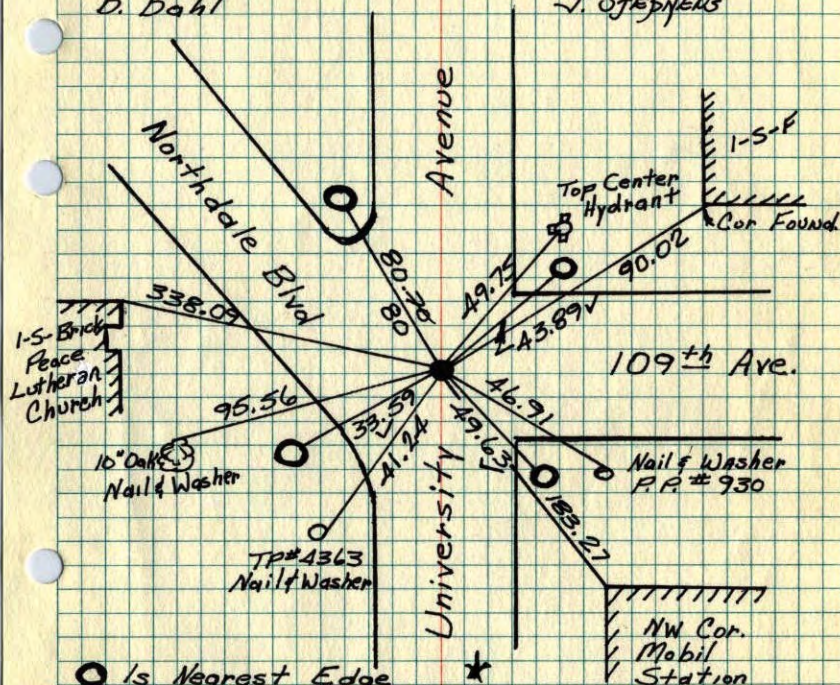
Set Pk. Spks. 2' N+E

Set Cast Iron Monument Flush Aug 29, 68

TIE CHECK
July 16, 1974
R. Farmer
N. Dahl
D. Dahl

TIE CHECK
7-27-78
D. DAHL

TIE CHECK
JUNE 22, 1977
R. SANWEGUD
S. BRIEN
J. STEDNELS



★ Is Nearest Edge
Of Round Concrete
Foundation For
Stoplight Post
On Four Corners
Of Intersection

Replaced
c.i. 11-18-80
H. LARSON
B. GUETZKO
D. NAGLAK

June 26, 1964
J. Oliver
R. Carlson
N. Livgard
J. Dunlop

TIE CHECK
7-8-80
B. STEPHENS
P. ROSS
P. HORNBY

ROLAND W. ANDERSON COUNTY SURVEYOR
ANOKA COUNTY, MINNESOTA
TEMPERATURE CORRECTED
AND HORIZONTALLY
TAPED MEASUREMENTS

NE Cor. Sec. 24 T31 R24

Granite Mon. down 5" Iron pipe flush

Set P.K. spks. 2' N. + W.

Set C.I. Mon. flush, Tie Check

8/29/68

D. Powell

R. Olson

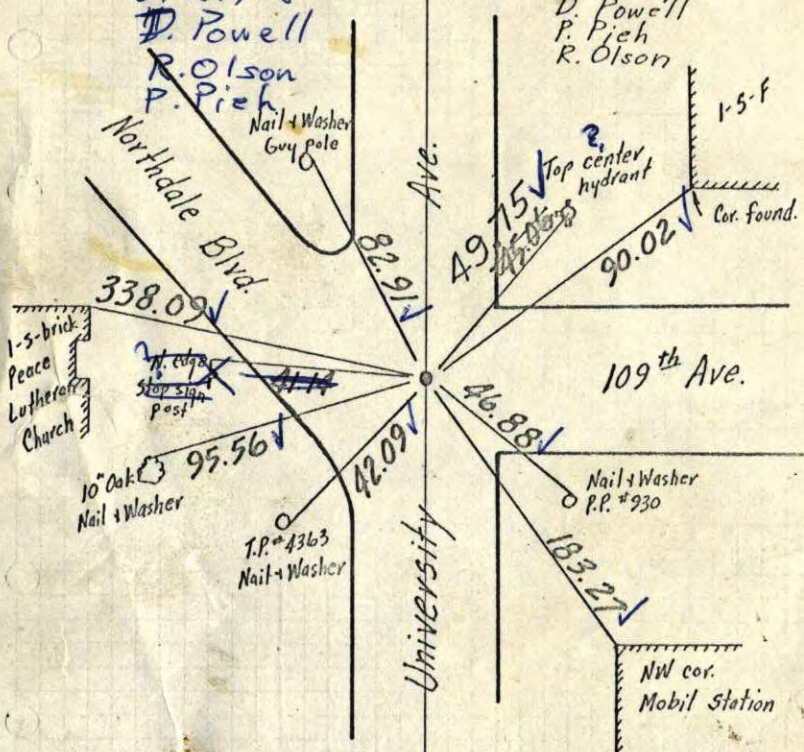
P. Pich

June 19, 1968

D. Powell

P. Pich

R. Olson



TEMPERATURE CORRECTED
AND HORIZONTALLY
TAPED MEASUREMENTS

June 26, 64

J. Oliver
R. Carlson
N. Livgard
J. Dunlop

Tie Check
July 11, 1966
H. Lakson
D. Potter

ROLAND W. ANDERSON
COUNTY SURVEYOR
ANOKA COUNTY, MINNESOTA

Removed Granite lying over.

NE Cor. Sec. 24 T31 R24

Granite Mon. down 5" Iron pipe flush

Set P.K. spks. 2' N. + W.

Set Cast Iron Monument flush, Tie Check

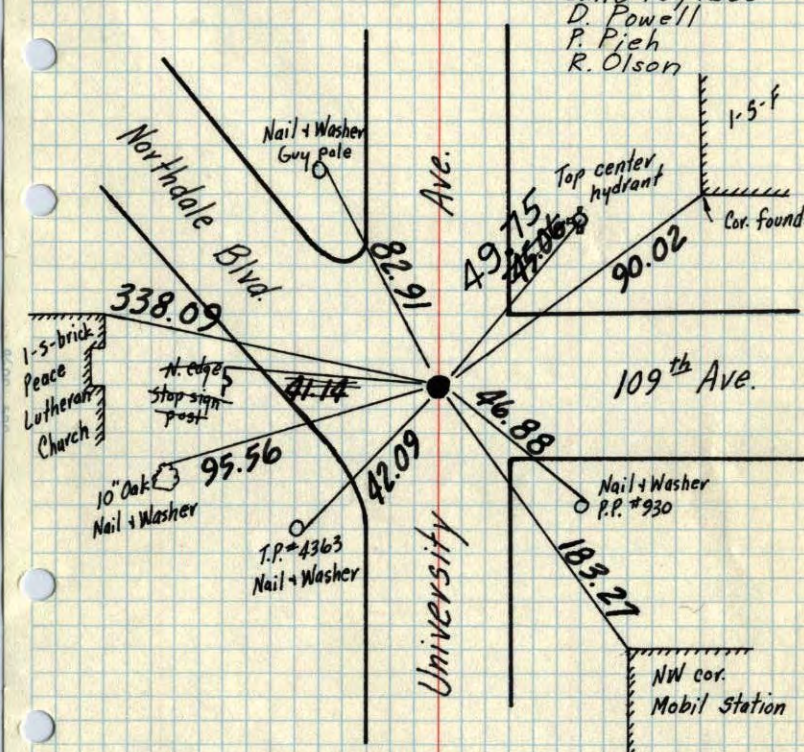
Aug. 29, 1968

June 19, 1968

D. Powell

P. Pich

R. Olson



TEMPERATURE CORRECTED
AND HORIZONTALLY
TAPED MEASUREMENTS

June 26, 64

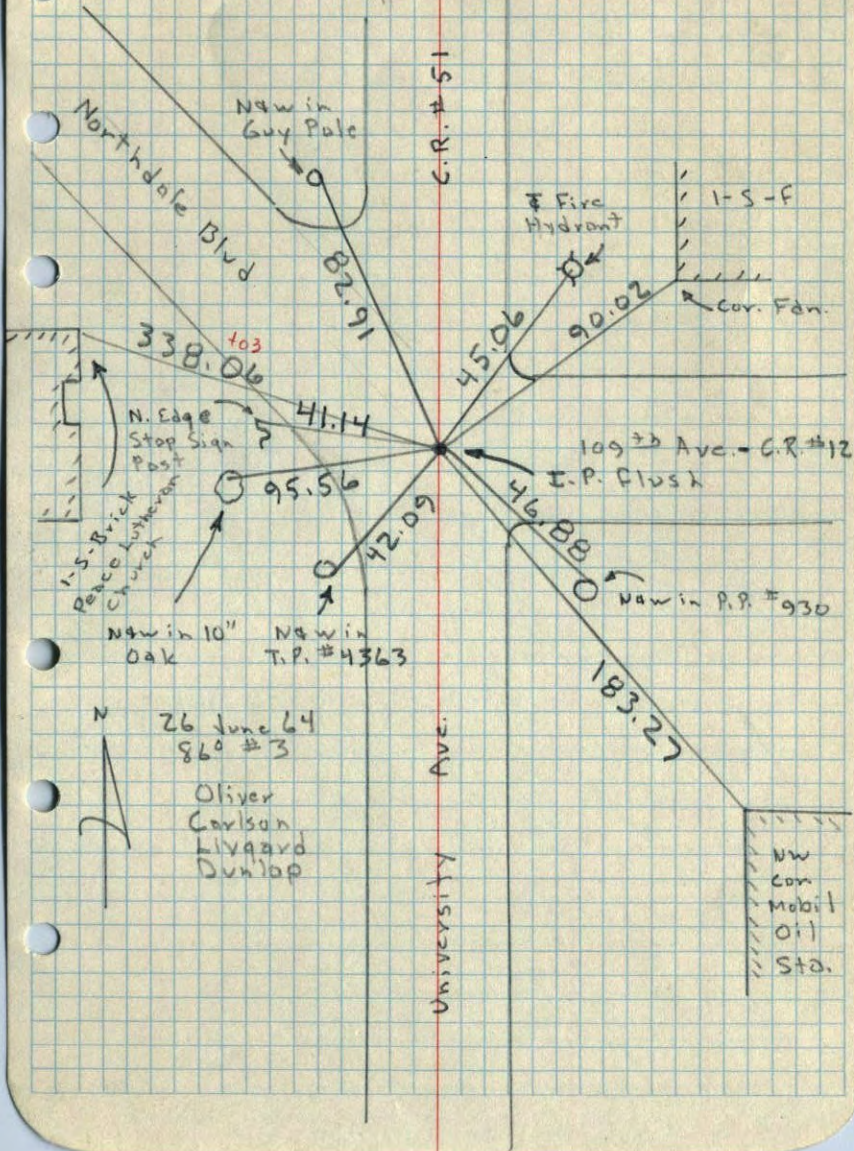
J. Oliver
R. Carlson
N. Livgard
J. Dunlop

Tie Check
July 11, 1966
H. Lakson
D. Potter

ROLAND W. ANDERSON
COUNTY SURVEYOR
ANOKA COUNTY, MINNESOTA

NE Cor. Sec. 24, T31, R24

Gran. Man. down 5" - I.P. Flush
with Blacktop. Set PK Spks 2' No. 4 & 6



26 June 64
86 #3

Oliver
Carlson
Livaard
Dunlap

University Ave.

NW
Con
Mobil
Oil
Sto.

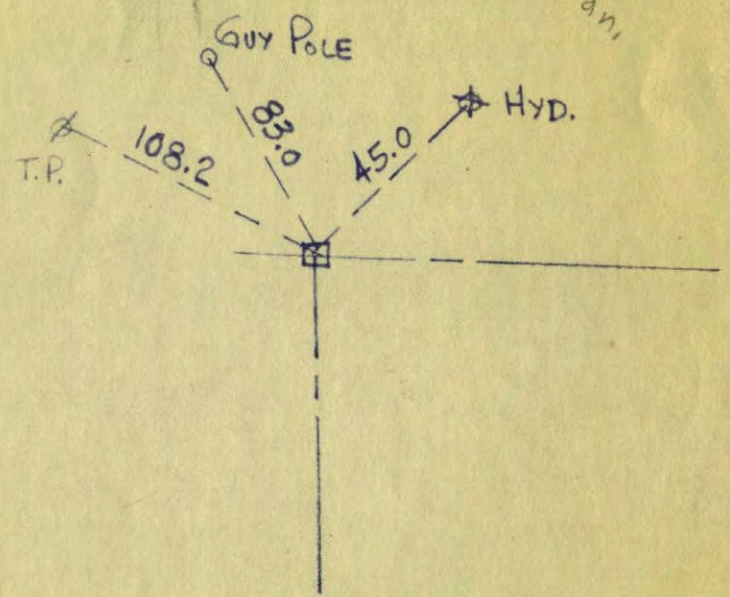
NE
~~NW~~ CORNER OF SECTION 19²⁴
TOWNSHIP 31, RANGE 23²⁴

9/24/62

CONC.

129/2

Have
Gran.



N. C. HOIUM
AND ASSOCIATES, INC.
LAND SURVEYORS

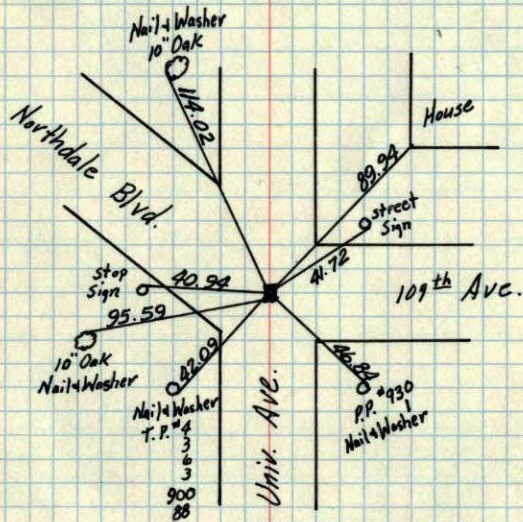
ANOKA, MINNESOTA

577

NE Corner. Sec. 24 T31 R24

Granite down 5"

Short Iron Pipe over center

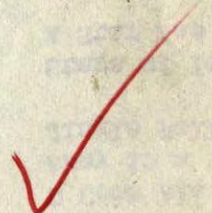
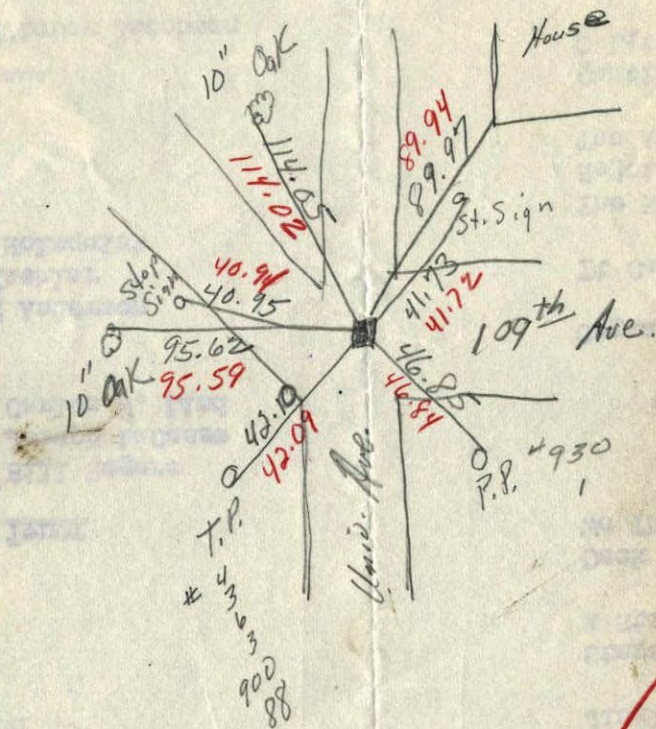


TEMPERATURE CORRECTED
AND HORIZONTALLY
TAPED MEASUREMENTS

Feb. 23, 1960

ROLAND W. ANDERSON
COUNTY SURVEYOR
ANOKA COUNTY, MINNESOTA

NE Cor. Sec. 24 T31 R24
Granite down 5"
Iron Pipe over center

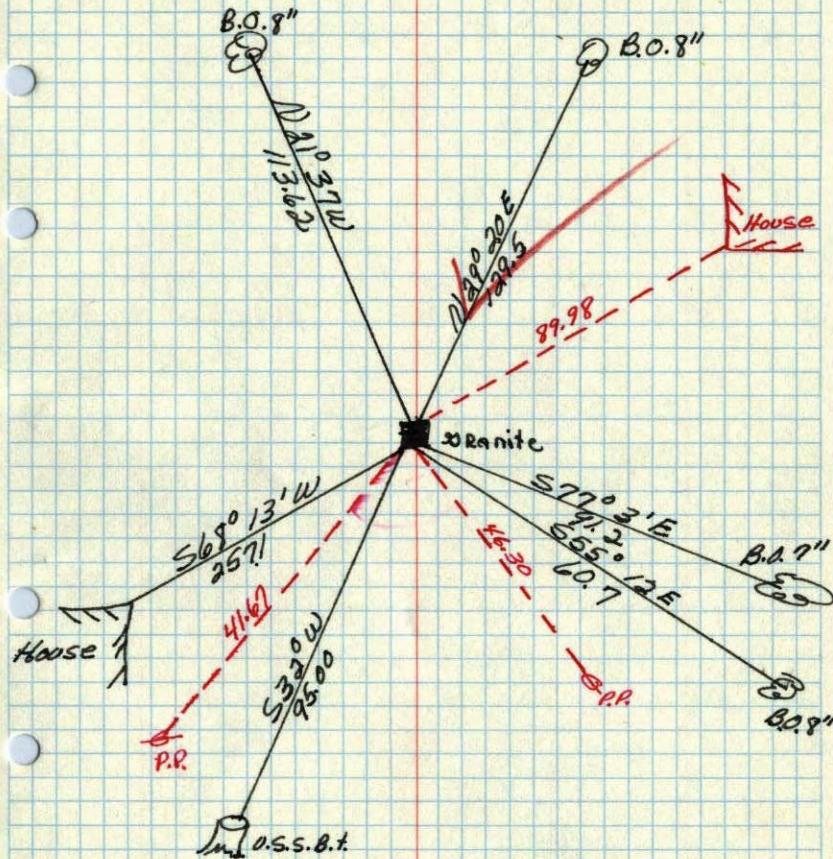


Aug. 22°

NE corner of Sec. 24 T. 31 R. 24

Granite down 4"

Retied By
Harold Wilke
Sept. 1954



June 7, 1943
Cactw right