

CERTIFICATE OF LOCATION OF GOVERNMENT CORNER

County of Anoka

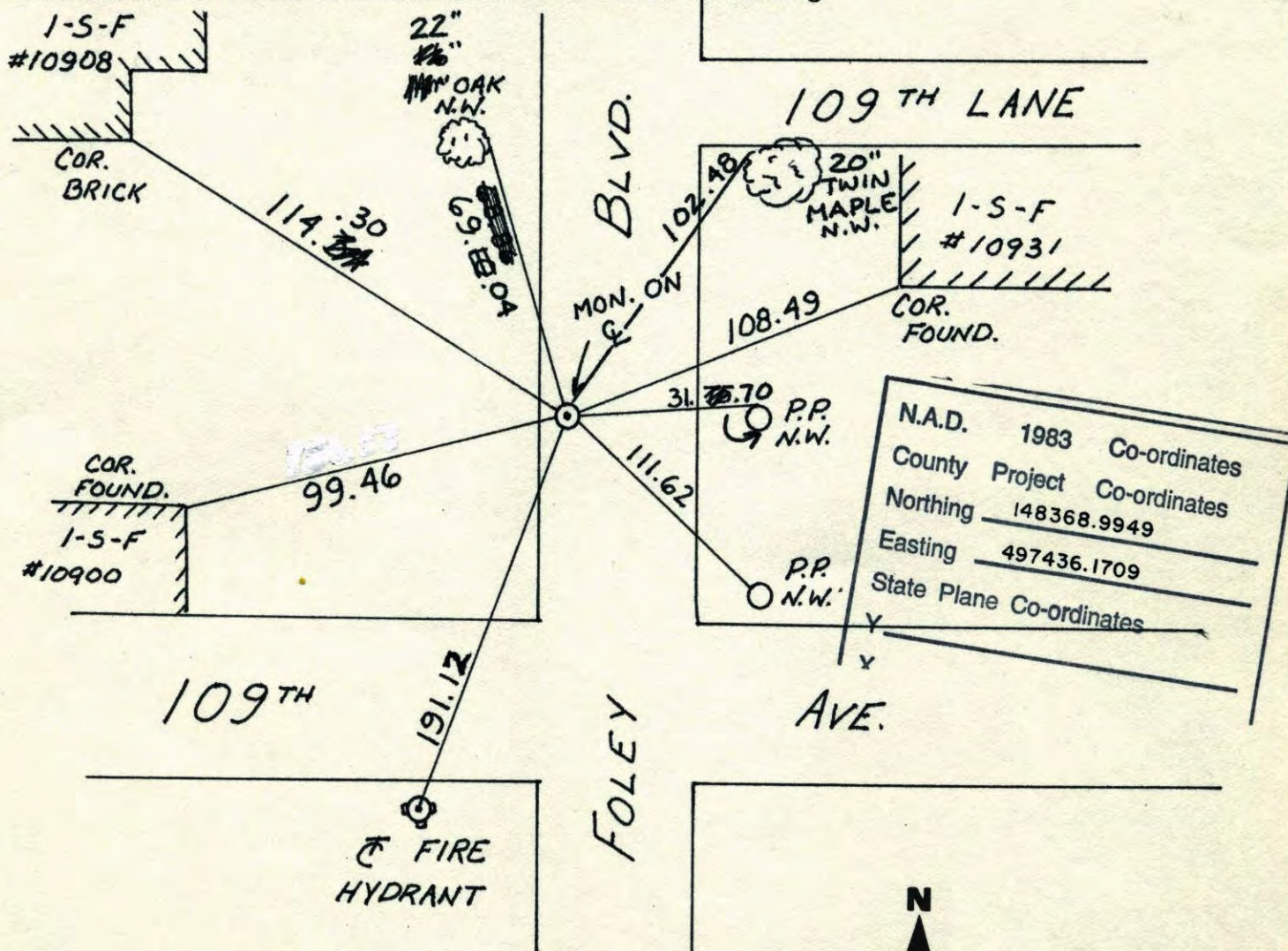
State of Minnesota

SOUTH QTR. Corner of Sec. 13 Township 31 Range 24

I hereby certify that on the 24 day of FEB., 1960, I found the described corner which was evidenced by CONCRETE

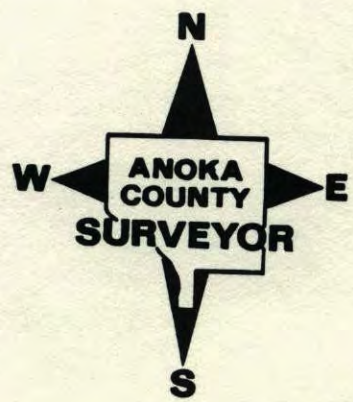
and I further certify that to perpetuate the location of said corner, I did, at the exact location thereof, place a permanent marker consisting of CAST IRON MON.

which reference or witness monuments are located in the manner following:



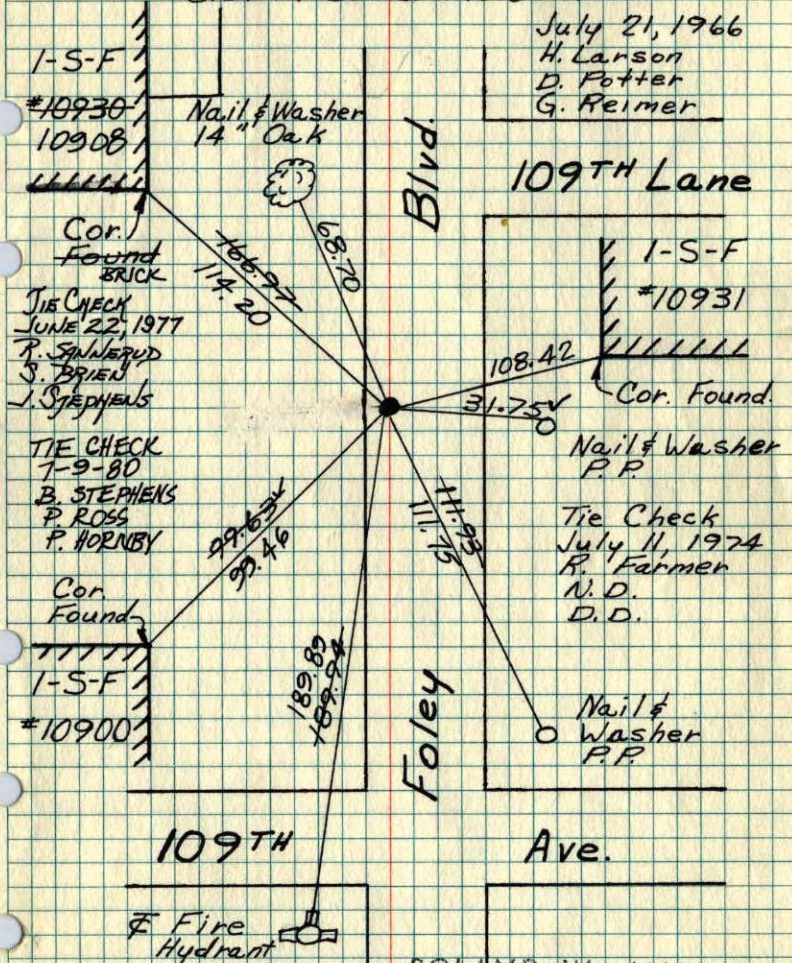
N.A.D.	1983	Co-ordinates
County	Project	Co-ordinates
Northing	148368.9949	
Easting	497436.1709	
State Plane Co-ordinates		

Revised date	Revised date	Revised date
6-13-86		
8-23-90		
8-9-94		
8-8-01		



S 1/4 Cor. Sec. 13, T31, R24

Reset Cast-iron Mon. After Const.
P.K.'s 2.00' N. & E. Took Add. Ties
C.I. In Centerline Of Road

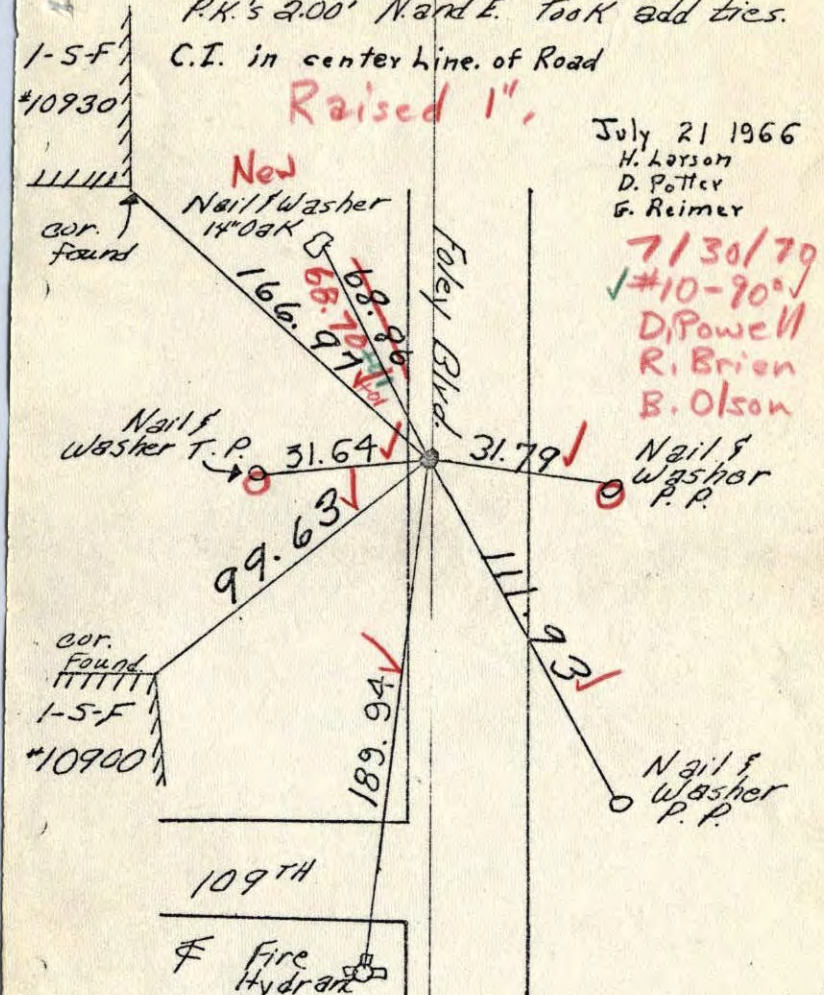


ROLAND W. ANDERSON
COUNTY SURVEYOR
ANOKA COUNTY, MINNESOTA

TEMPERATURE CORRECTED
AND HORIZONTALLY
TAPED MEASUREMENTS

S 1/4 Cor. Sec. 13, T31 R24

Reset cast-iron mon. after const.
P.K.'s 2.00' N. and E. Took add ties.
C.I. in center line. of Road
Raised 1"



ROLAND W. ANDERSON
COUNTY SURVEYOR
ANOKA COUNTY, MINNESOTA

TEMPERATURE CORRECTED
AND HORIZONTALLY
TAPED MEASUREMENTS

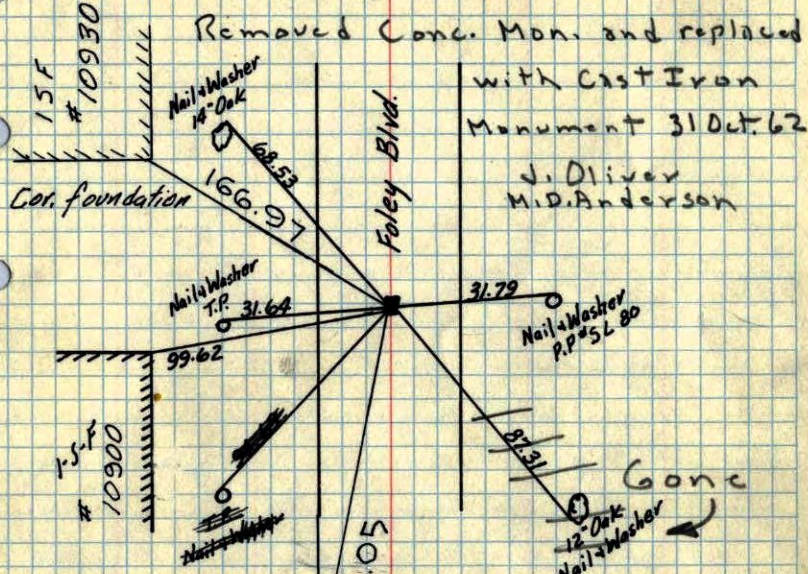
S/4 Corner Sec. 13 T31 R24

Con. Mon. down 0.3'

Iron Pipe on S. side

Removed Conc. Mon. and replaced
with Cast Iron
Monument 31 Oct. 62

J. Oliver
M.D. Anderson



Cast Iron Set and
retied July 21, 1966
H. Larson, D. Potter, G. Reimer

TEMPERATURE CORRECTED
AND HORIZONTALLY
TAPED MEASUREMENTS

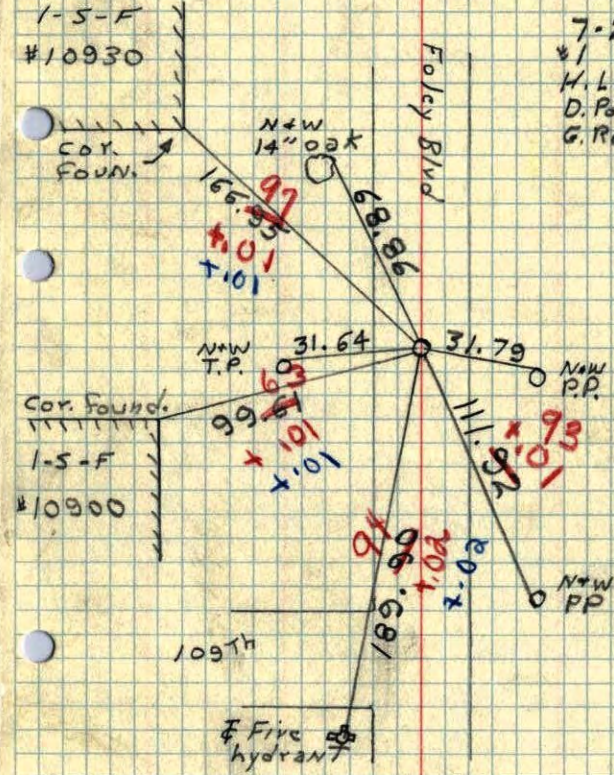
Feb. 24, 1960

ROLAND W. ANDERSON
COUNTY SURVEYOR
ANOKA COUNTY, MINNESOTA

S/4 Cor Sec. 13 T31 R24

Reset cast iron mon. after const.
PK's 2.00' N. and E. Took Add. Tics.

7-21-66
#1 760
H. Larson
D. Potter
G. Reimer

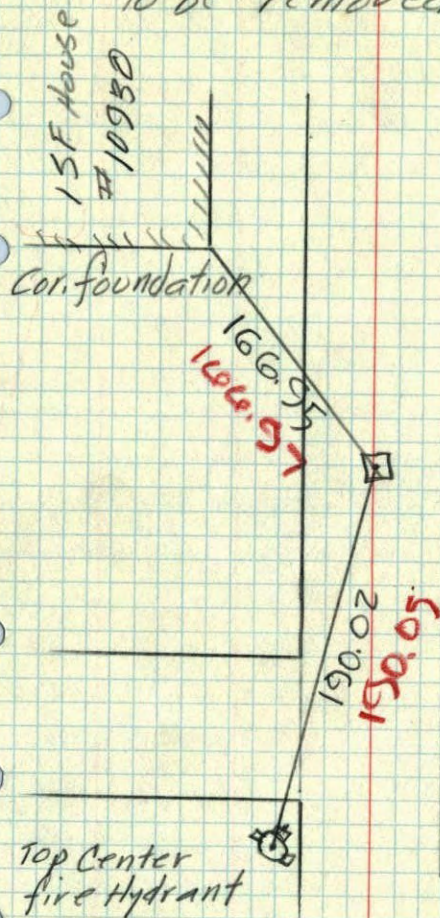


Five hydrant

ADDITIONAL TIES

S 1/4 Cor. Sec. 13-31-24

Conc. Mon. down 0.3'
To be removed



Aug 27, 1962

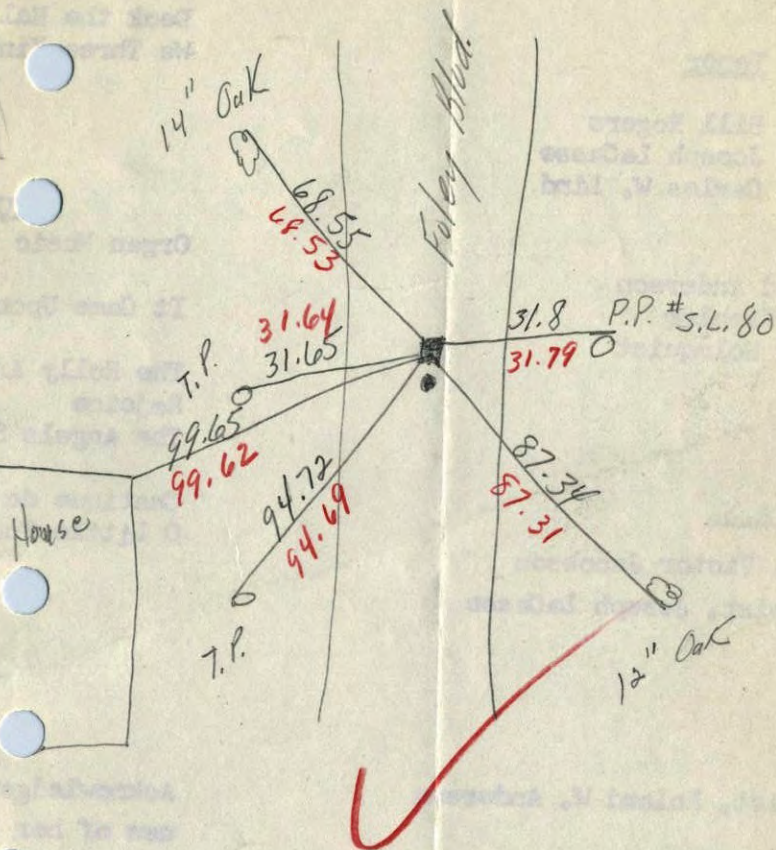
90°

M.D. Anderson
G. Todd

Temp Corr.

S 1/4 Cor. Sec. 13 T31 R24

Con. Mon. down 0.3'
Iron Pipe on S. side

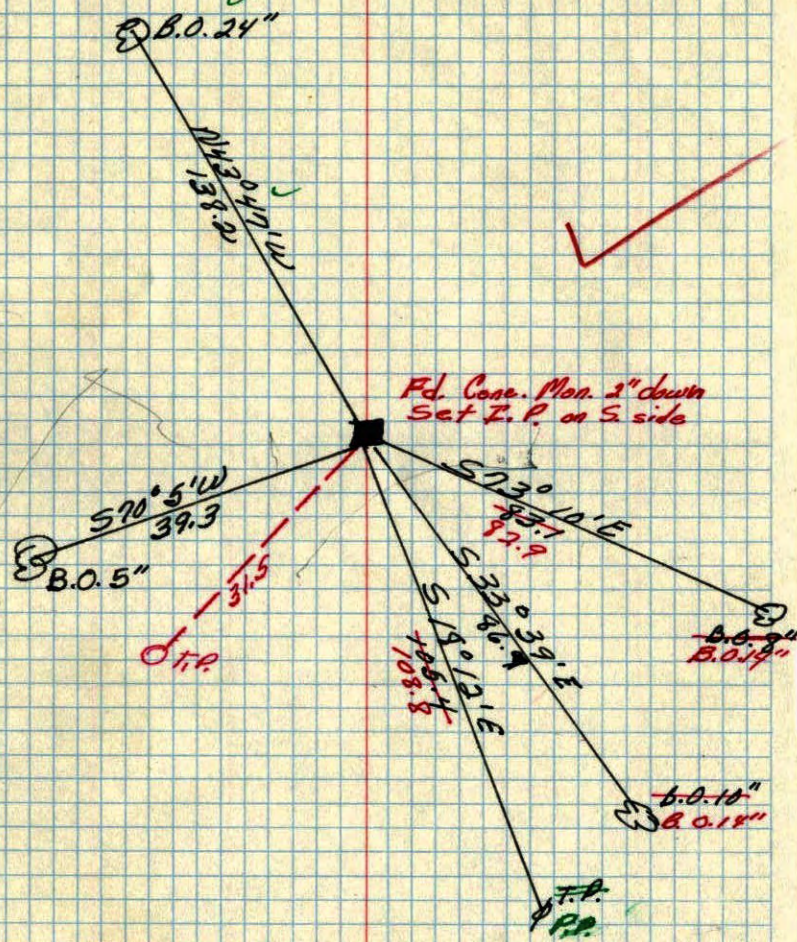


Temp. 16° F

41 ✓
S 1/4 corner of Sec. 13, T. 31, R. 24

Concrete Mon. down 5

Re-Tied By
Murdal Edge Co
July 1955



Fd. Conc. Mon. 2" down
Set F.P. on S. side

June 5, 1943
Cadwright

S 1/4 Cor of Sec 13-31-24

B.O. 24"

138.2

Note: Fd Conc.
Mon. 2" Down
set T.P. on S. Side

