

CERTIFICATE OF LOCATION OF GOVERNMENT CORNER

County of Anoka

State of Minnesota

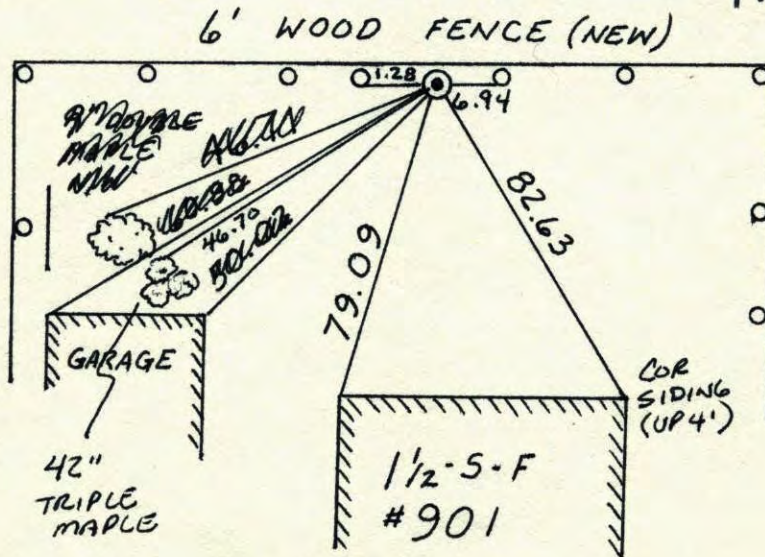
SOUTHWEST Corner of Sec. 13 Township 31 Range 24

I hereby certify that on the 24 day of FEB., 1960, I found the described corner which was evidenced by CONCRETE

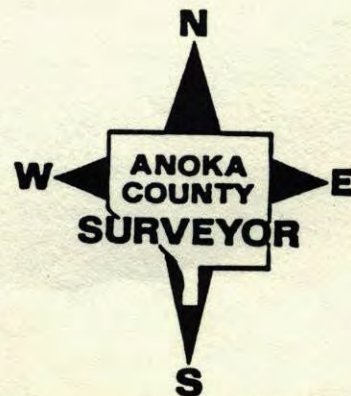
and I further certify that to perpetuate the location of said corner, I did, at the exact location thereof, place a permanent marker consisting of CAST IRON MON. ON TOP OF CONCRETE MON.

which reference or witness monuments are located in the manner following:

N.A.D.	1983	Co-ordinates
County	Project	Co-ordinates
Northing	<u>148334.6945</u>	
Easting	<u>494790.5492</u>	
State Plane Co-ordinates		
Y	_____	
X	_____	

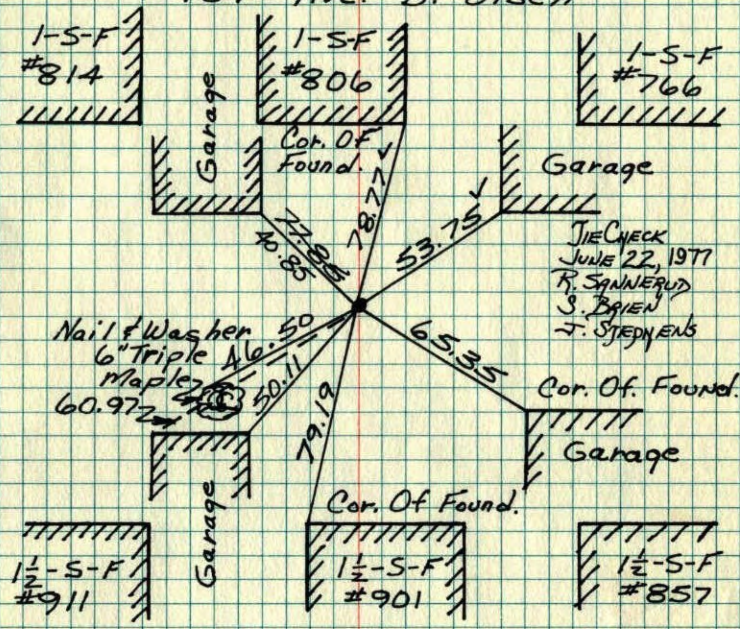


Revised date	Revised date	Revised date
6-4-64	6-23-86	
7-30-70	4-26-91	
7-12-74	8-11-94	
6-22-77	10-24-01	
7-10-80		
3-7-84		
7-25-83		



S.W. Cor. Sec 13-T31-R24

Concrete Monument Broken Off 8" Down
 Set Cast Iron Monument Flush On Top
 Of Concrete July 30, 1970
 D. Powell
 R. Brien
 B. Olsen
 109th Ave.



TIE CHECK
 JUNE 22, 1977
 R. SANNEBERG
 S. BRIEN
 J. STEPHENS

109th Lane

Tie Check
 June 4, 1964
 M.D. Anderson
 R. Carlson

Feb. 24, 1960

Found Cast Iron Leaning
 And Concrete Broken In
 Several Places. Replaced
 With Cast Iron Monument
 (Down .5'±) (Buried
 Cable Under Top On North
 Side) July 12, 1974
 R. Farmer

Tie Check
 July 12, 1974
 R. Farmer
 N. Dahl
 D. Dahl
 TIE CHECK
 1-10-80
 D. STEPHENS
 P. ROSS
 P. HORNBY

ROLAND W. ANDERSON
 COUNTY SURVEYOR
 ANOKA COUNTY, MINNESOTA

TEMPERATURE CORRECTED
 AND HORIZONTALLY
 TAPED MEASUREMENTS

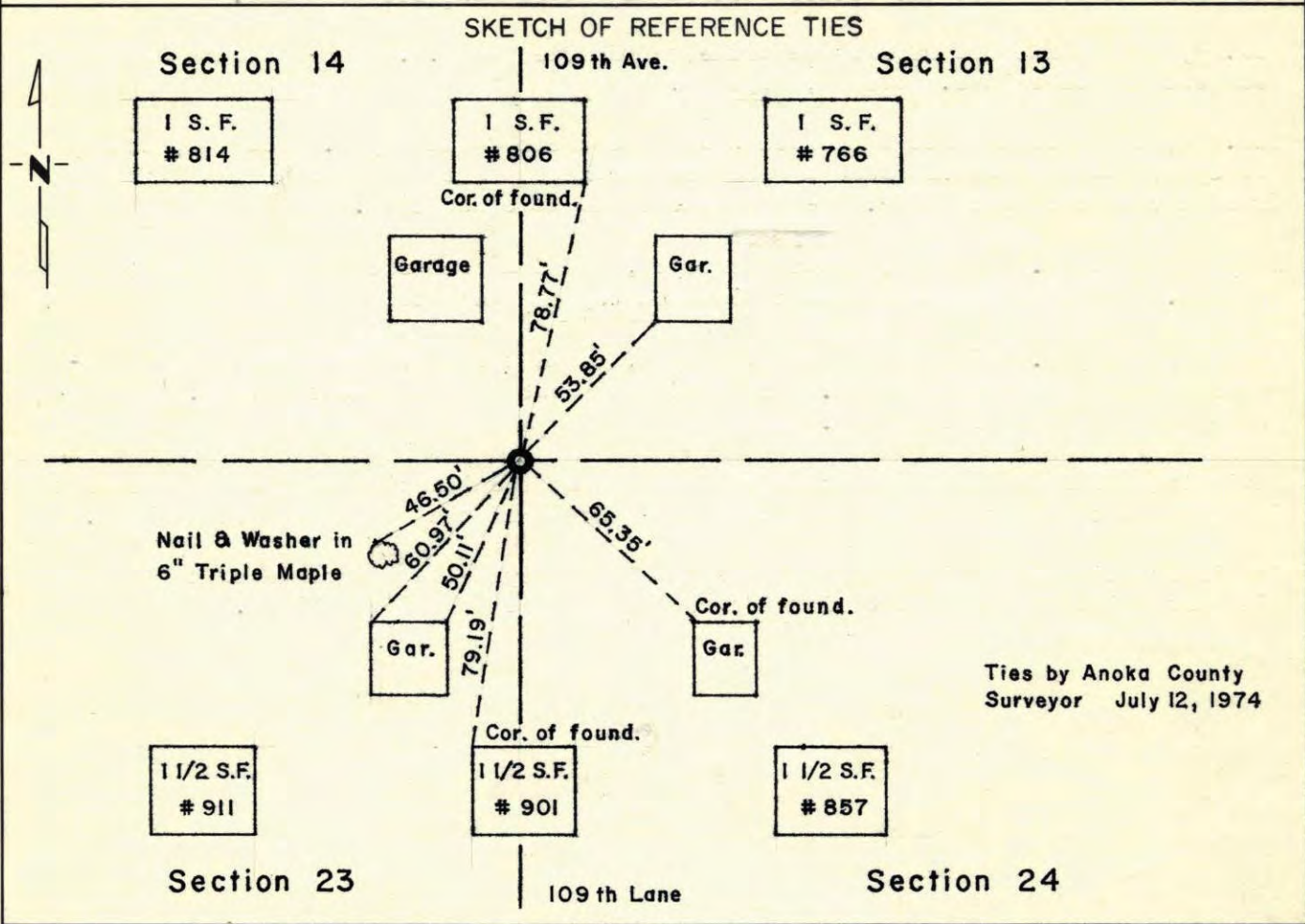
CERTIFICATE OF LOCATION OF GOVERNMENT CORNER

~~NORTHEAST~~ ^{SW} Corner of Section 23¹³, Township 31N, Range 24W, 4th P.M.

STATE OF MINNESOTA, County of ANOKA

At the corner location shown on the sketch:

- On 1974 found a Cast Iron Monument
DATE
- left monument as found, lowered monument, removed monument (explain)
- On _____ placed a _____
DATE



Statement of evidence relative to this corner location is on back of page.

I hereby certify that this document and the data contained herein was prepared by me or under my direct supervision.

John E. Swenson 9-2-75
SIGNATURE DATE

Registration No. 10460
 Land Surveyor, Professional Engineer
 County Surveyor, County Engineer

OFFICE OF THE REGISTER OF DEEDS
County of _____

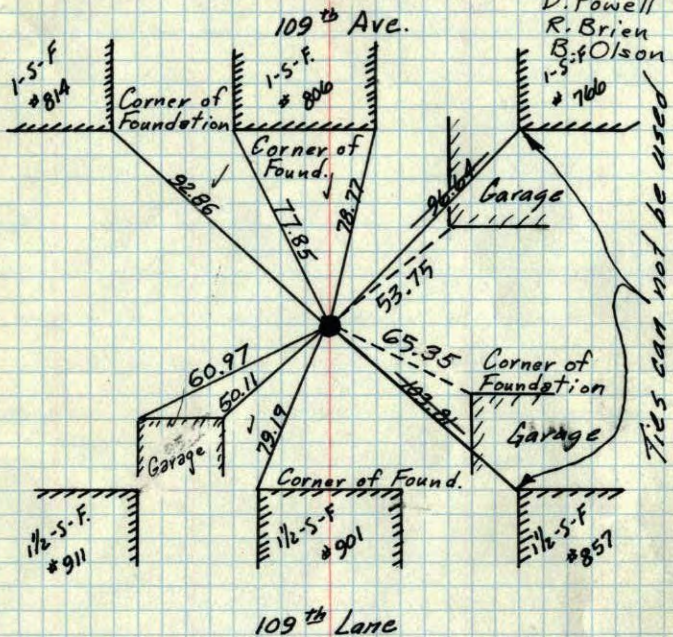
I hereby certify that this document was filed in the Reg. of Deeds office at _____ .M. on the _____ day of _____ A.D., 19 _____

Register of Deeds _____
By _____, Deputy
DOCUMENT NO. _____

SW Corner Sec. 13 T31 R24

Con. Mon. broken off down 8"
Set Cast Iron Monument flush on top of
concrete. Iron Pipe on N. side

July 30, 1970
D. Powell
R. Brien
B. Olson



Ties can not be used

TEMPERATURE CORRECTED
AND HORIZONTALLY
TAPED MEASUREMENTS

Ties checked
June 4, 1964
M. D. Anderson
R. Carlson

New ties -----

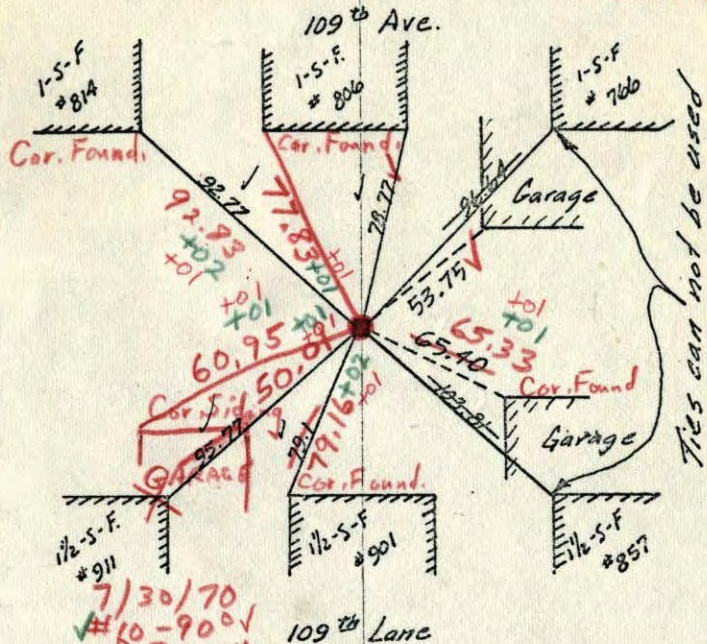
Feb. 24, 1960

Tie Check
July 12, 1966
H. Larson
D. Potter
July 30, 1970
D. Powell
R. Brien
B. Olson

ROLAND W. ANDERSON
COUNTY SURVEYOR
ANOKA COUNTY, MINNESOTA

SW Corner Sec. 13 T31 R24

Con. Mon. broken off down 8"
Set broken off C.I. Mon. flush on top
Iron Pipe on N. side of concrete.



Ties can not be used

TEMPERATURE CORRECTED
AND HORIZONTALLY
TAPED MEASUREMENTS

Ties checked
June 4, 1964
M. D. Anderson
R. Carlson

New ties -----

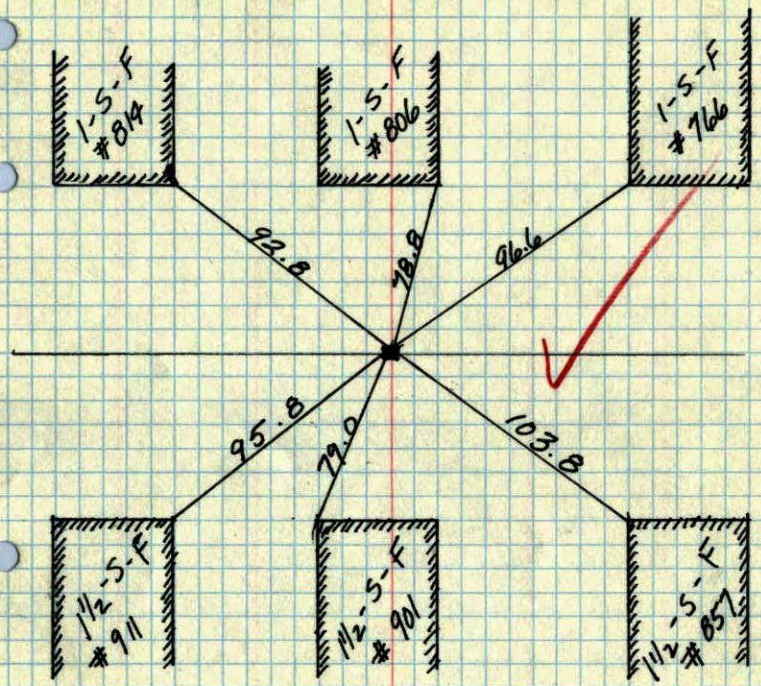
Feb. 24, 1960

Tie Check
July 12, 1966
H. Larson
D. Potter

ROLAND W. ANDERSON
COUNTY SURVEYOR
ANOKA COUNTY, MINNESOTA

S.W. Cor. Sec. 13, T31, R24

Conc. mon. Top broken off
I.P. N. side

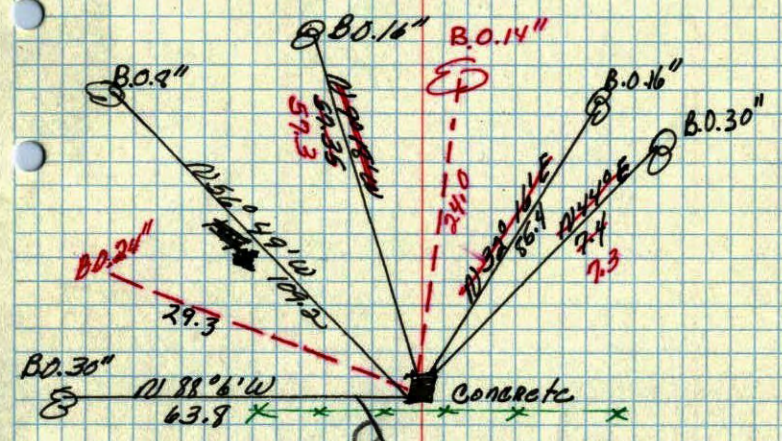


9/28/59
N.C. Holm

SW corner of Sec. 13 T.31. R.24

Concrete Mon. flash

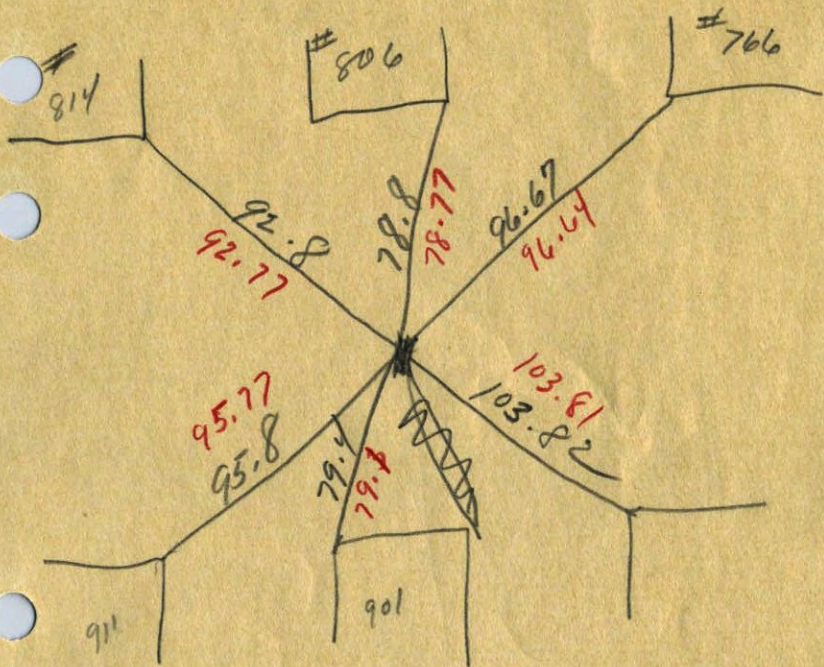
Retired By
Minder Eng. Co
July 1955



Replaced
with new
tie 9/28/59

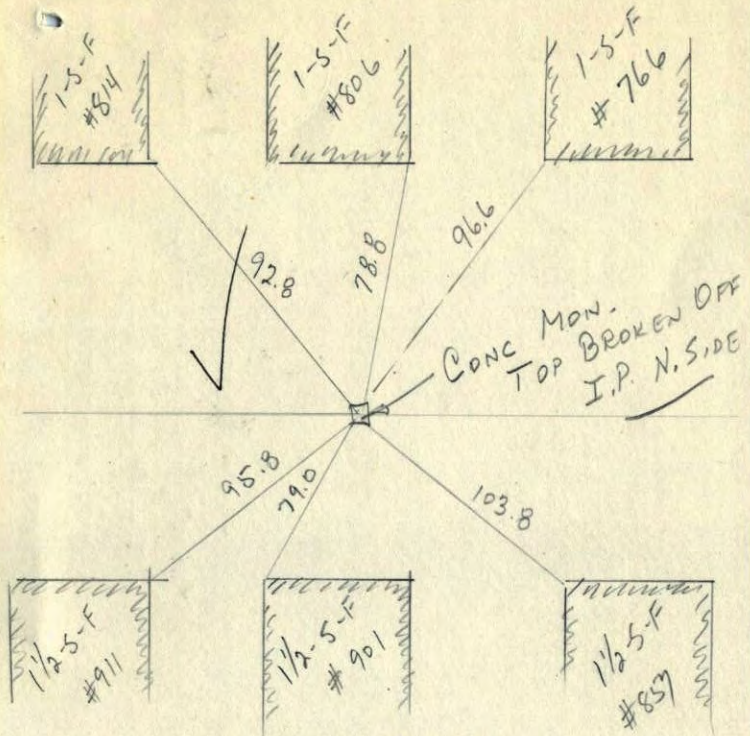
June 5, 1943
Coetw right

SW. Cor. Sec. 13 + 31 R24
 Con. Mon. broken ^{down 8"} Off
 Iron. Pipe on N. side



Temp. 18°

SW COR
 SEC. 13, T.31, R.24



**N. C. HOIUM
 AND ASSOCIATES, INC.**
 LAND SURVEYORS
 SHOPPING CENTER - WEST MAIN STREET
 ANOKA, MINNESOTA
 HArrison 1-6340



John E. Hopkins



NORTH STAR CONCRETE CO.

CONCRETE PIPE

PHONE MINNEAPOLIS GR 7231
ST. PAUL ZE. 2127

PRECAST MANHOLES

S.W. Cor of Sec 13-31-24'

