

# CERTIFICATE OF LOCATION OF GOVERNMENT CORNER

County of Anoka

State of Minnesota

NORTH 1/4 Corner of Sec. 23 Township 31 Range 24

I hereby certify that on the 1<sup>ST</sup> day of AUG., 1960, I found the described corner which was evidenced by CONCRETE

and I further certify that to perpetuate the location of said corner, I did, at the exact location thereof, place a permanent marker consisting of CAST IRON MONUMENT

N.A.D. 1983 which reference or witness monuments are located in the manner following:

County Project Co-ordinates

Northing 148365.0394

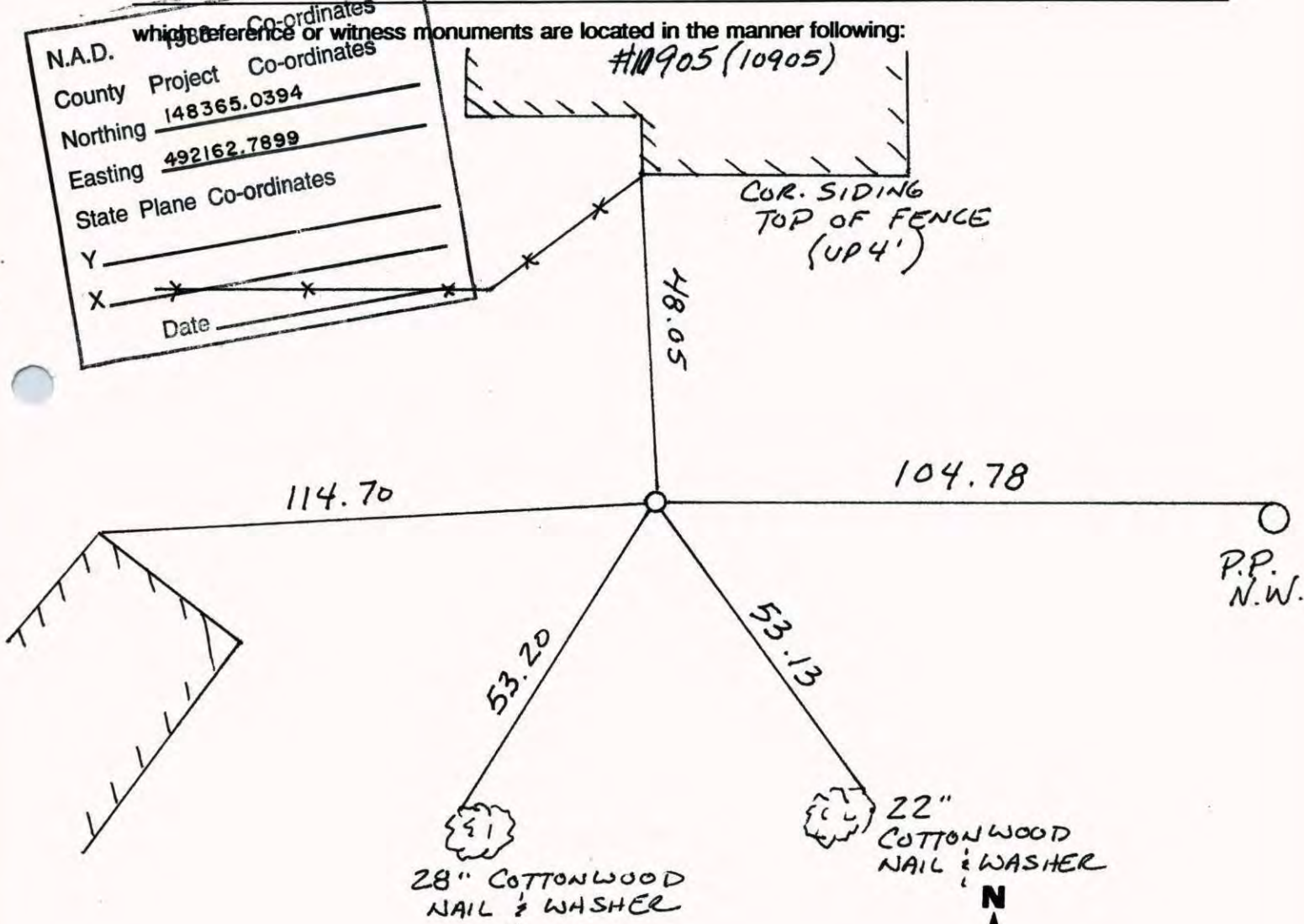
Easting 492162.7899

State Plane Co-ordinates

Y \_\_\_\_\_

X \_\_\_\_\_

Date \_\_\_\_\_



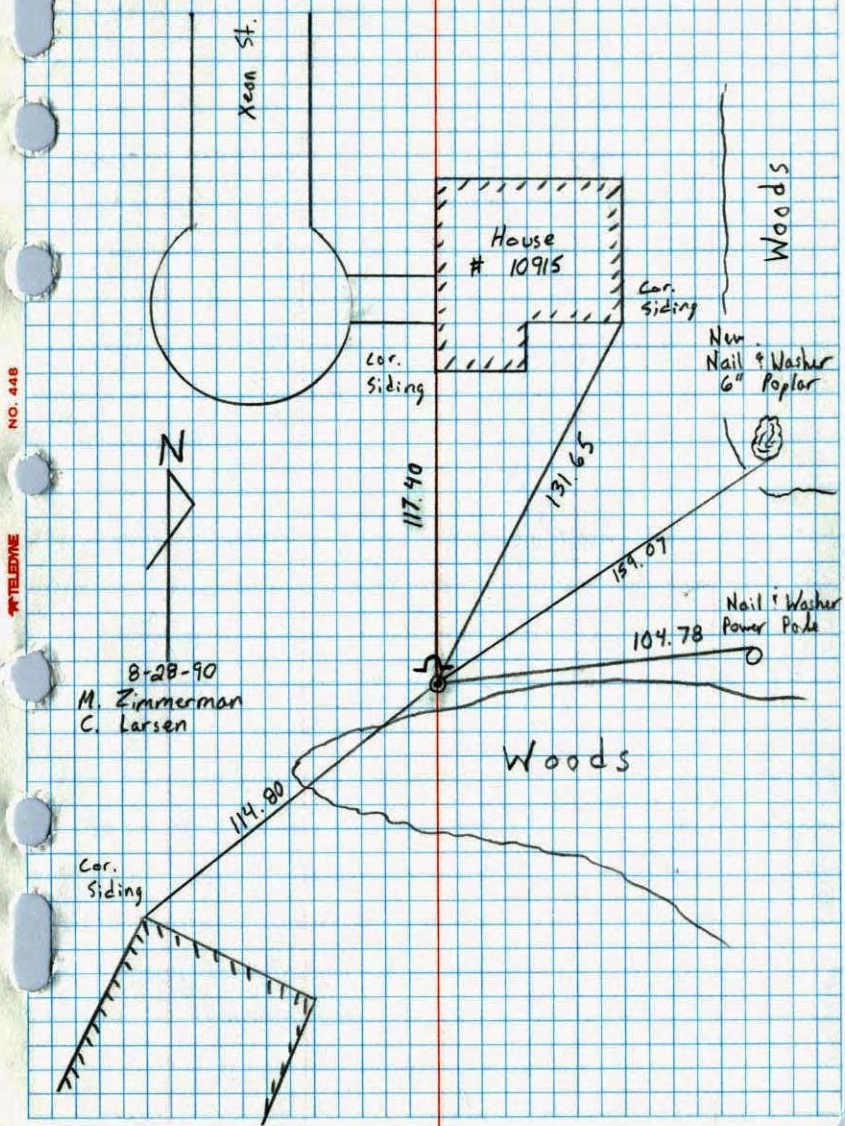
Revised date	Revised date	Revised date
9-18-90		
8-22-94		
10-23-01		





North 1/4 Corner sec. 23 T31 R24

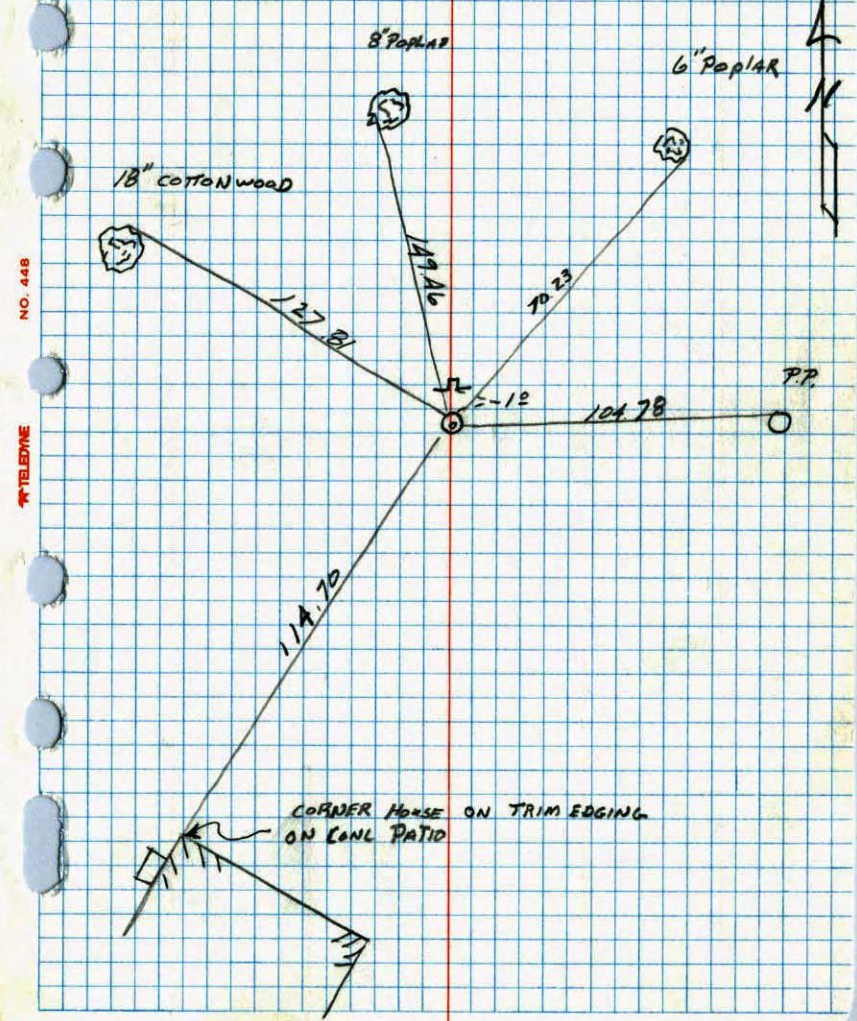
Retied Cast Iron Monument w. Sign: Post N. side



N 1/4 COR SEC. 23-31-24

J. STEVENSON  
M. NAJJI-W  
6-8-88

REPLACED BROKEN C.I. WITH NEW C.I. SIGN & POST  
OLD C.I. HAD BROKEN TOP, BASE WAS STRAIGHT & Solid





N 1/4 Cor. Sec 23 - T31 - R24

~~Conc. Mon. Flush  
Iron Pipe on North Side~~

Mon. Under Highline Running E & W

~~Cast Iron Judicial Landmark~~

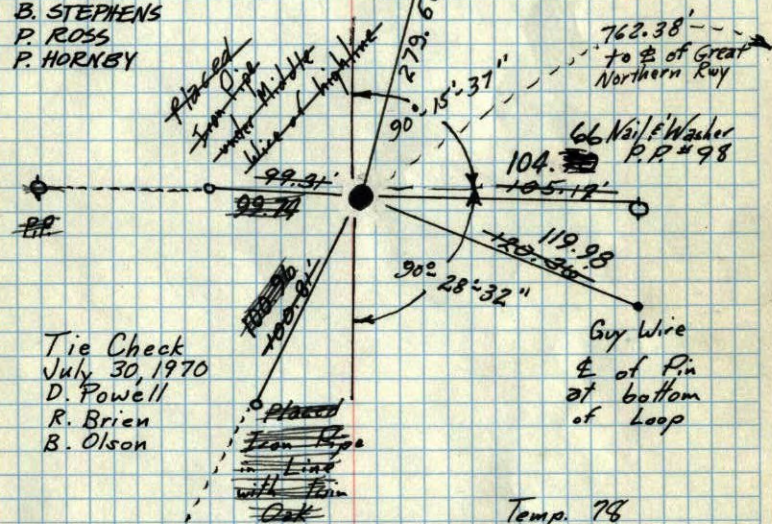
Cast Iron gone  
replaced A.C. Cast Iron  
7-18-66  
H. Larson  
D. Potter

TEMPERATURE CORRECTED  
AND HORIZONTALLY  
TAPED MEASUREMENTS

TIE CHECK  
7-10-80  
B. STEPHENS  
P. ROSS  
P. HORNBY

Tie Check  
July 30, 1970  
D. Powell  
R. Brien  
B. Olson

TIE CHECK  
7/9/74  
R. FARMER  
N.D.  
D.D.



Temp. 78  
Retie 6/23/64 & 1/1/60  
M. D. Anderson, Gill Rogers  
R. Carlson, Dennis Potter  
Ralph Robinson

ROLAND W. ANDERSON  
COUNTY SURVEYOR  
ANOKA COUNTY, MINNESOTA



# CERTIFICATE OF LOCATION OF GOVERNMENT CORNER

NORTH QUARTER Corner of Section 23, Township 31 N, Range 24 W, 4th P.M.

STATE OF MINNESOTA, County of ANOKA

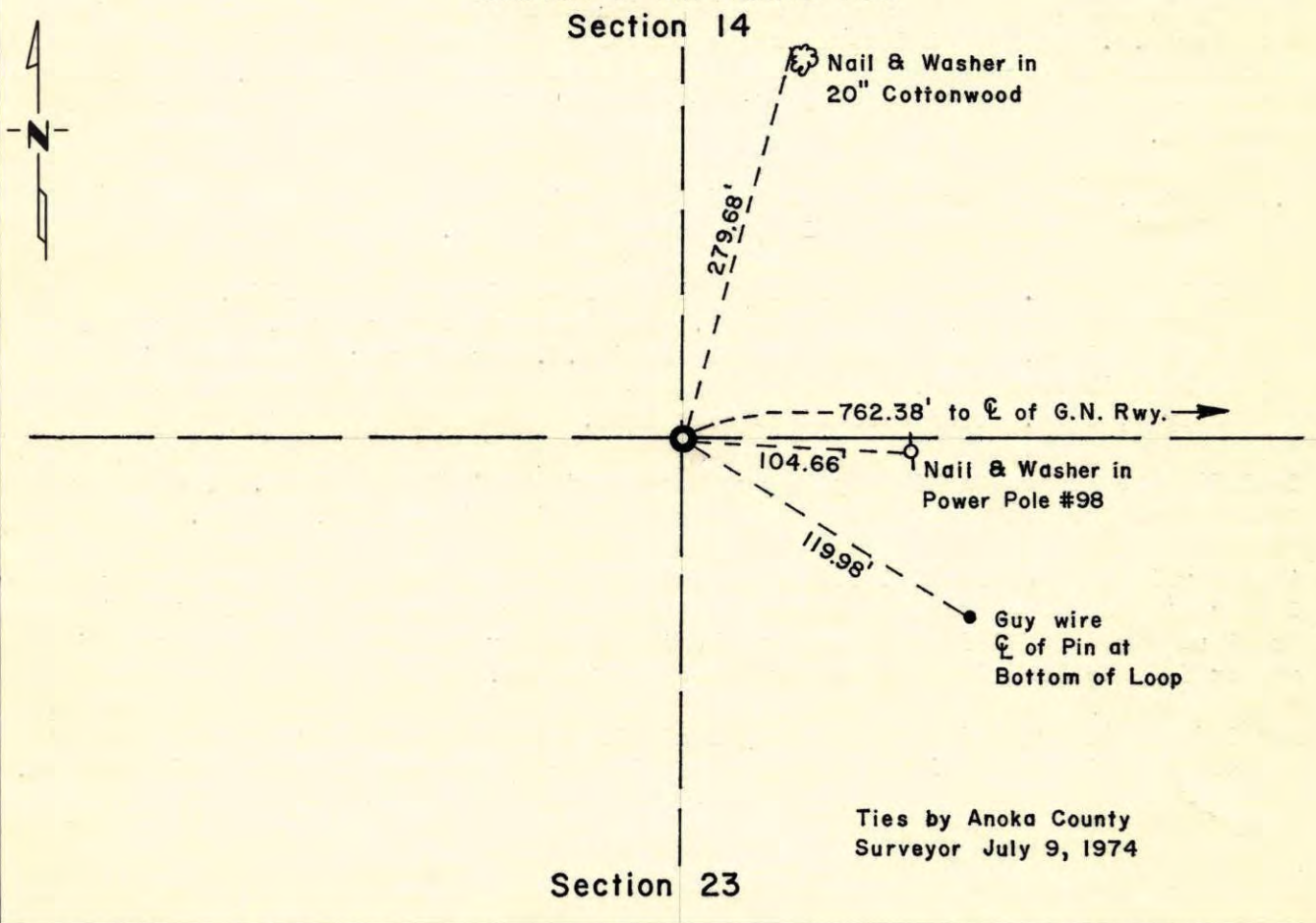
At the corner location shown on the sketch:

On 1974 found a Cast Iron Monument  
DATE

left monument as found,  lowered monument,  removed monument (explain)

On \_\_\_\_\_ placed a \_\_\_\_\_  
DATE

### SKETCH OF REFERENCE TIES



Statement of evidence relative to this corner location is on back of page.

I hereby certify that this document and the data contained herein was prepared by me or under my direct supervision.

John E. Suenen 9-26-75  
SIGNATURE DATE

Registration No. 10460

Land Surveyor,  Professional Engineer

County Surveyor,  County Engineer

### OFFICE OF THE REGISTER OF DEEDS

County of \_\_\_\_\_

I hereby certify that this document was filed in the Reg. of Deeds office at \_\_\_\_\_ .M. on the \_\_\_\_\_ day of \_\_\_\_\_ A.D., 19 \_\_\_\_\_

Register of Deeds \_\_\_\_\_

By \_\_\_\_\_, Deputy

DOCUMENT NO. \_\_\_\_\_



N 1/4 Cor. Sec 23 - T31 - R24

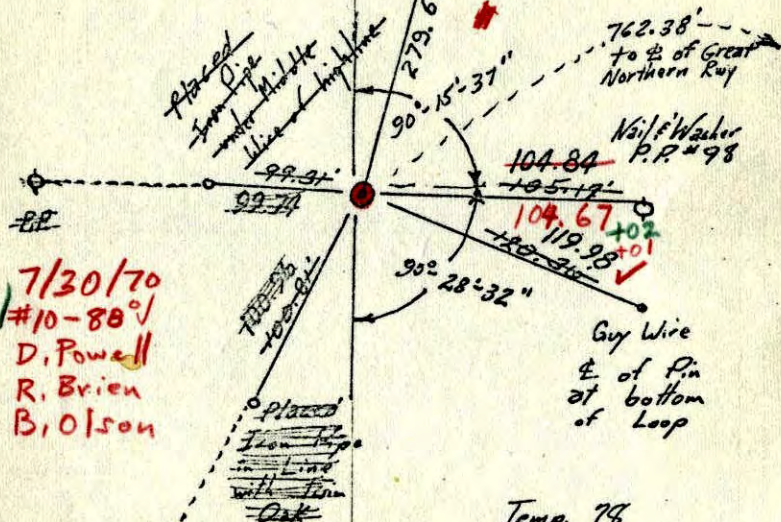
~~Cons. Mon. Flush~~  
~~Iron Pipe on North Side~~

Mon. Under Highline Running E & W

~~Cast Iron Judicial Landmark~~

Cast iron gone  
replaced A.C. cast iron  
7-18-66  
H. Larson  
D. Potter

TEMPERATURE CORRECTED  
AND HORIZONTALLY  
TAPED MEASUREMENTS



7/30/70  
#10-88  
D. Powell  
R. Brien  
B. Olson

Temp. 76

Retie 6/23/69 8/1/60

M. D. Anderson Bill Rogers  
R. Carlson Dennis Potter  
Ralph Robinson

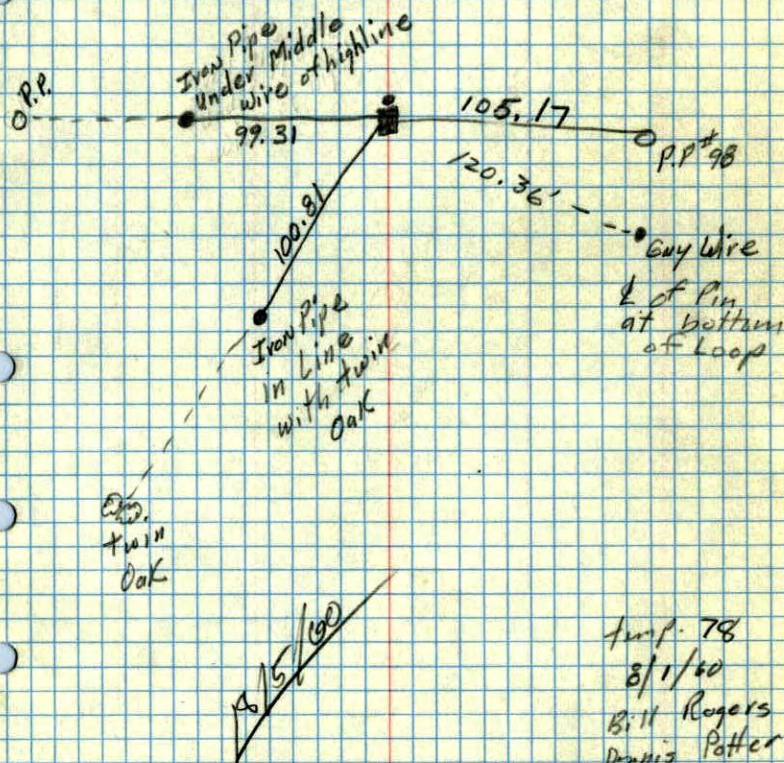
ROLAND W. ANDERSON  
COUNTY SURVEYOR  
ANOKA COUNTY, MINNESOTA

N 1/4 Cor. Sec. 23 T31 R24

Cons. Mon. Flush

Iron Pipe on North Side

Mon. Under highline Running E & W



Temp. 78

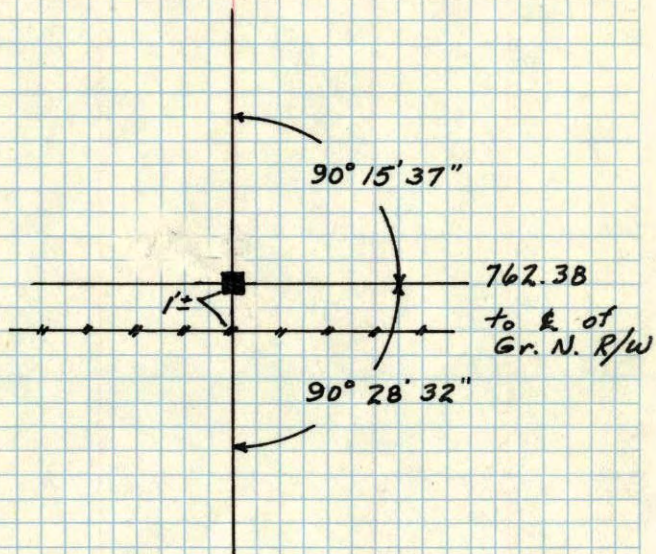
8/1/60

Bill Rogers  
Dennis Potter  
Ralph Robinson



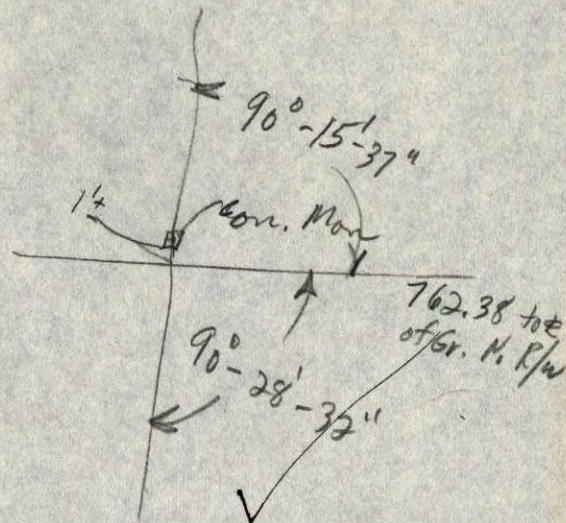
40A

N<sup>1</sup>/<sub>4</sub> Corn. Sec. 23, T31, R24  
Conc. Mon. up 6"



1957  
Minder

N<sup>1</sup>/<sub>4</sub> Corn. Sec. 23, T31, R24  
up 6"



Minder  
1957