

CONSTRUCTION TIE

69

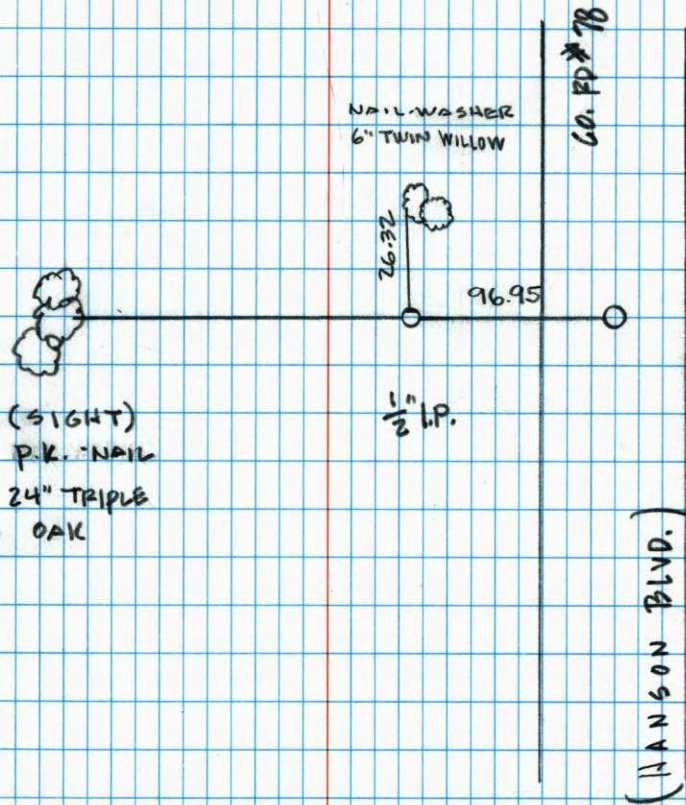
NORTH 1/4 COR. SEC. 22 T 31 R 24

RETIRED & REMOVED CAST IRON MONUMENT

3-15-00
J. SIMMER
T. SCHWAB

NO. 446

NATIONAL PRINTFAST



CERTIFICATE OF LOCATION OF GOVERNMENT CORNER

County of Anoka

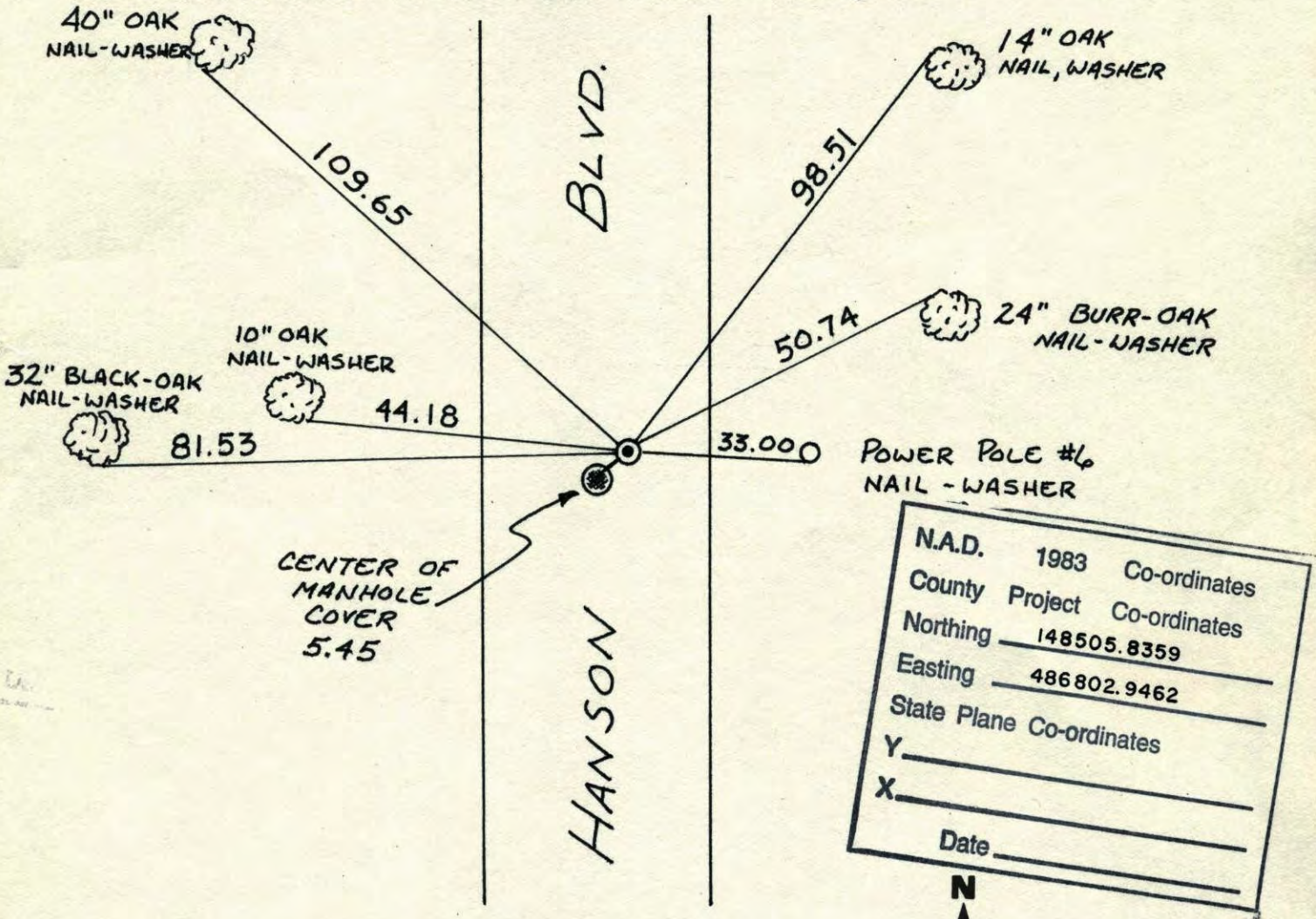
State of Minnesota

NORTH QTR. Corner of Sec. 22 Township 31 Range 24

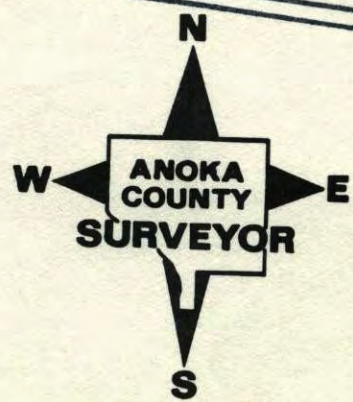
I hereby certify that on the 28 day of JULY, 1960, I found the described corner which was evidenced by CONCRETE

and I further certify that to perpetuate the location of said corner, I did, at the exact location thereof, place a permanent marker consisting of CAST IRON MON.

which reference or witness monuments are located in the manner following:

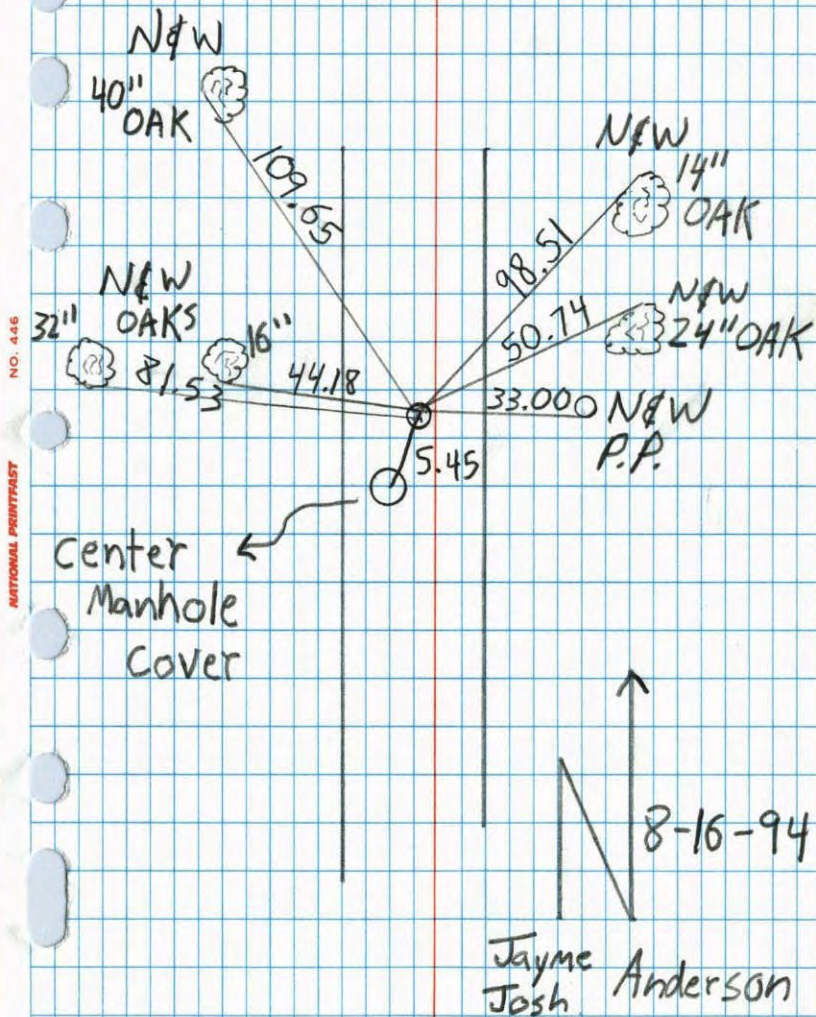


N.A.D.	1983	Co-ordinates
County	Project	Co-ordinates
Northing	<u>148505.8359</u>	
Easting	<u>486802.9462</u>	
State Plane Co-ordinates		
Y	_____	
X	_____	
Date _____		



Revised date	Revised date	Revised date
<u>6-17-86</u>		
<u>8-16-94</u>		

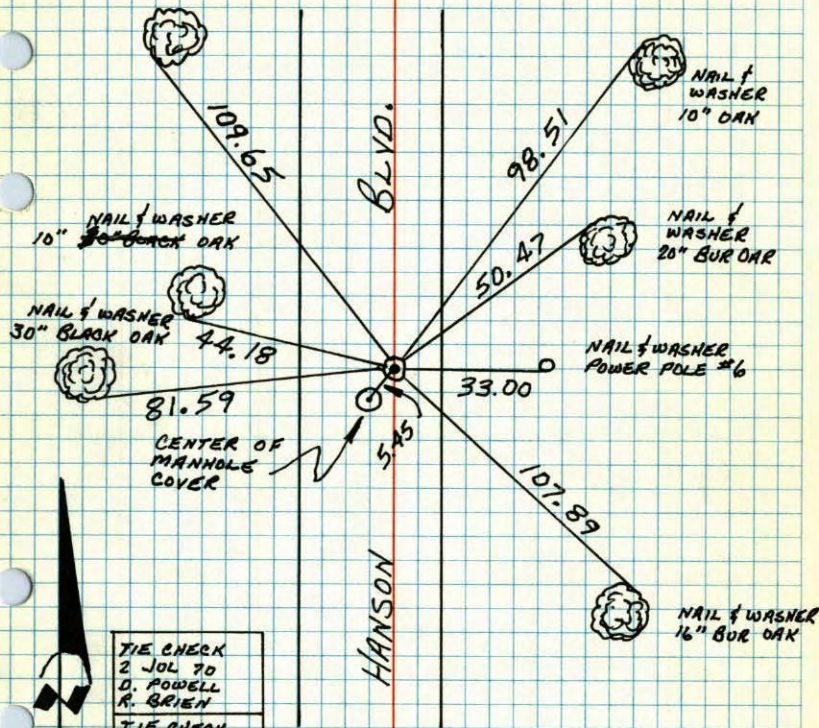
N 1/4 Sec. 22 T. 31 R. 24
 Retie Cast Iron Mon.



N 1/4 COR. SEC 22 - T31 - R24

FOUND CONCRETE MONUMENT 28 JUL 60 BILL ROGERS
 SET CAST IRON MONUMENT FLUSH. 7 1/2' WEST OF &
 HANSON BOULVARD. SET P.N.'S 2.00' NORTH & EAST.
 13 JUL 70 D. POWELL
 R. BRIEN

NAIL & WASHER
 38" OAK



TIE CHECK 2 JUL 70 D. POWELL R. BRIEN
TIE CHECK 16 JUL 76 R. FARMER D. DANL
TIE CHECK 22 JUN 77 R. SANNERUD S. BRIEN J. STEPHENS

TIE CHECK
7-1-80
BRIEN
P. ROSS
P. HORNBY

TEMPERATURE CORRECTED
 AND HORIZONTALLY
 TAPED MEASUREMENTS
 ROLAND W. ANDERSON
 COUNTY SURVEYOR
 ANOKA COUNTY, MINNESOTA

N/4 Cor Sec 22-T31-R24

Conc. Mon. down to
open end Iron flush with Mon.
open end Iron over Center Mon.
Set PK in place 7/2/70.
1 1/2' W. of E PK's 2.00' North + East.

Additional ties taken for
construction. Aug. 1, 1968

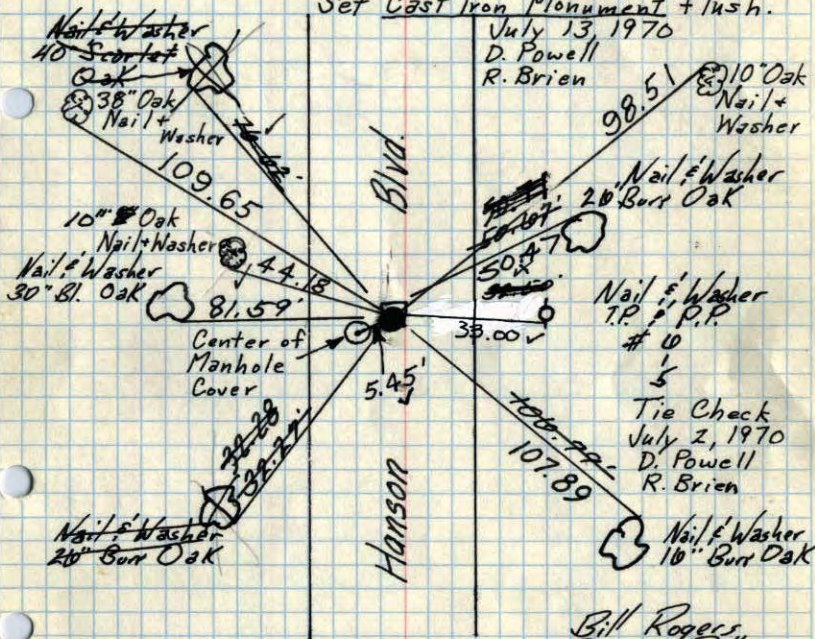
D. Powell
P. Pieh
R. Olson

Set Cast Iron Monument flush.

Tie Check
July 13, 1966

H. Larson
D. Potter

July 13, 1970
D. Powell
R. Brien



TEMPERATURE CORRECTED
AND HORIZONTALLY
TAPED MEASUREMENTS

ROLAND W. ANDERSON
COUNTY SURVEYOR
ANOKA COUNTY, MINNESOTA

TIE CHECK
JUNE 22, 1977
R. SANNERUD
J. STEPHENS
S. BRIEN

7/29/60
Temp 89°

Retie 6/17/64

M. D. Anderson
R. Carlson
JULY 16, 1974
R. FARMER
O. DAHL

N/4 Cor Sec 22-T31-R24

Conc. Mon. down to
open end Iron flush with Mon.
open end Iron over Center Mon.
Set PK in place 7/2/70.
1 1/2' W. of E PK's 2.00' North + East.

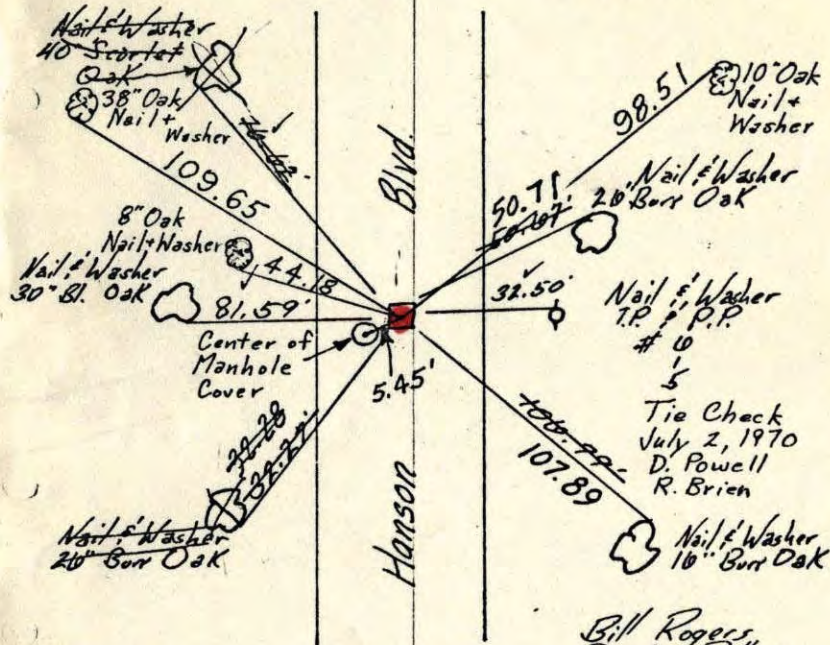
Additional ties taken for
construction. Aug. 1, 1968

D. Powell
P. Pieh
R. Olson

Set C.I. Mon. flush.

Tie Check
July 13, 1966

H. Larson
D. Potter



TEMPERATURE CORRECTED
AND HORIZONTALLY
TAPED MEASUREMENTS

ROLAND W. ANDERSON
COUNTY SURVEYOR
ANOKA COUNTY, MINNESOTA

TIE CHECK
JULY 2, 1970
D. POWELL
R. BRIEN

7/29/60
Temp 89°

Retie 6/17/64

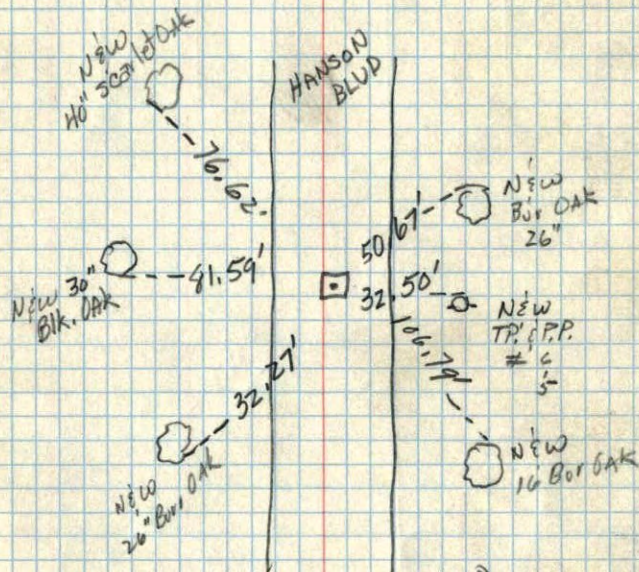
M. D. Anderson
R. Carlson

N¹/₄ Sec 22, T 31, R 24

Conc Man down 1'
open end Iron flush
with Man.
open end Iron
over Center Man.

7/28/60

89°

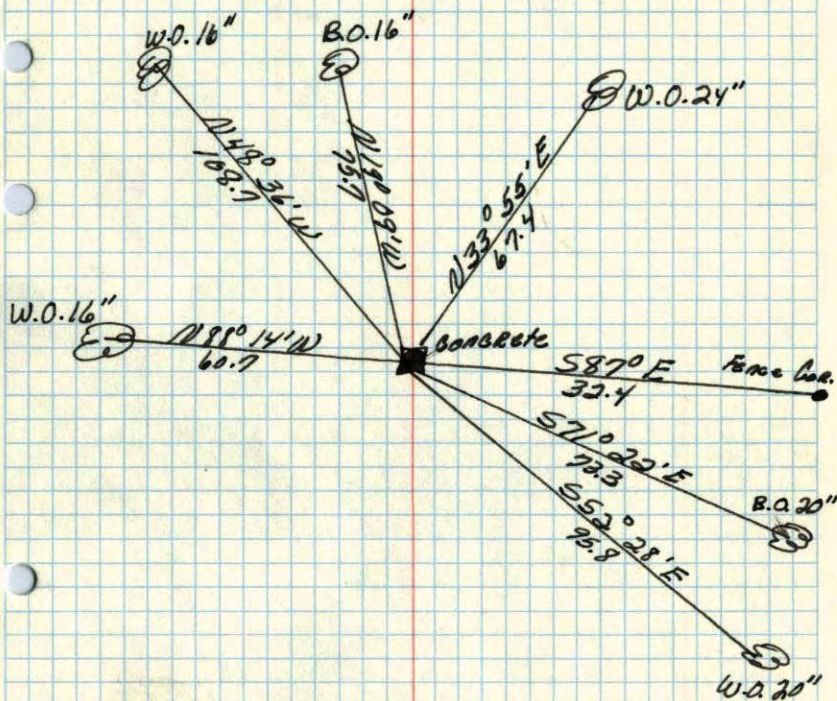


Bill Rogers,
Ralph Robinson,
Dennis Potter

8/5/60

N¹/₄ CORNER of Sec 22, T 31, R 24

Concrete Monument down 0.5ft.



Nov. 9, 1944
Cartwright