

CERTIFICATE OF LOCATION OF GOVERNMENT CORNER

County of Anoka

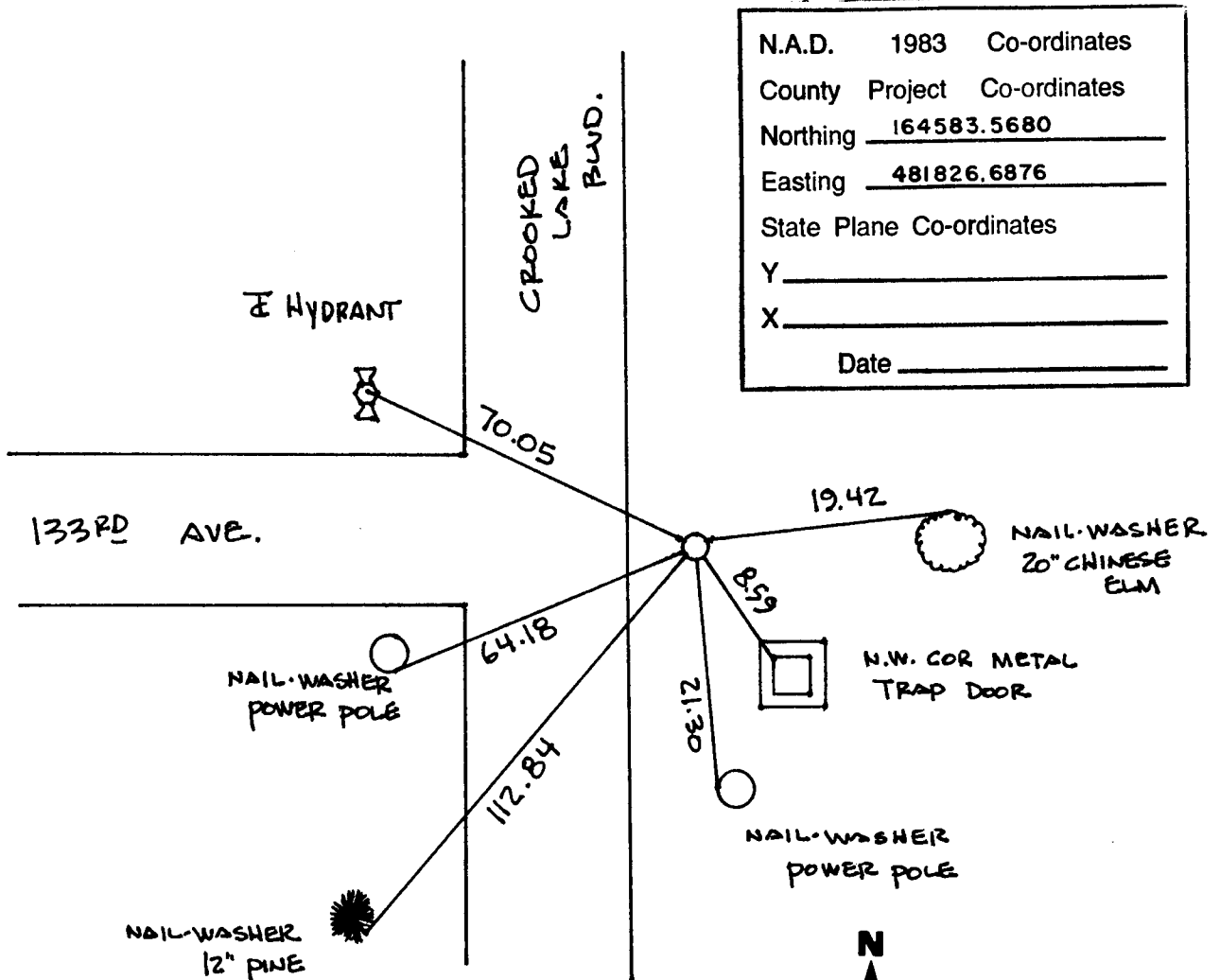
State of Minnesota

NORTH $\frac{1}{4}$ Corner of Sec. 4 Township 31 Range 24

I hereby certify that on the 28TH day of MARCH, 19 63, I found the described corner which was evidenced by GRANITE MONUMENT

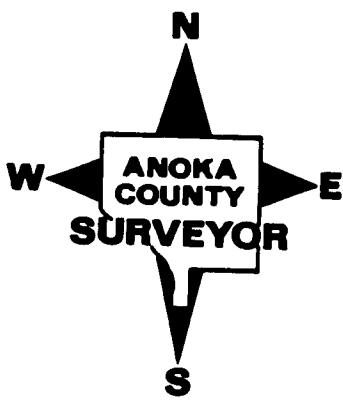
and I further certify that to perpetuate the location of said corner, I did, at the exact location thereof, place a permanent marker consisting of CAST IRON MONUMENT

which reference or witness monuments are located in the manner following:



N.A.D.	1983	Co-ordinates
County	Project	Co-ordinates
Northing		<u>164583.5680</u>
Easting		<u>481826.6876</u>
State Plane Co-ordinates		
Y		_____
X		_____
Date _____		

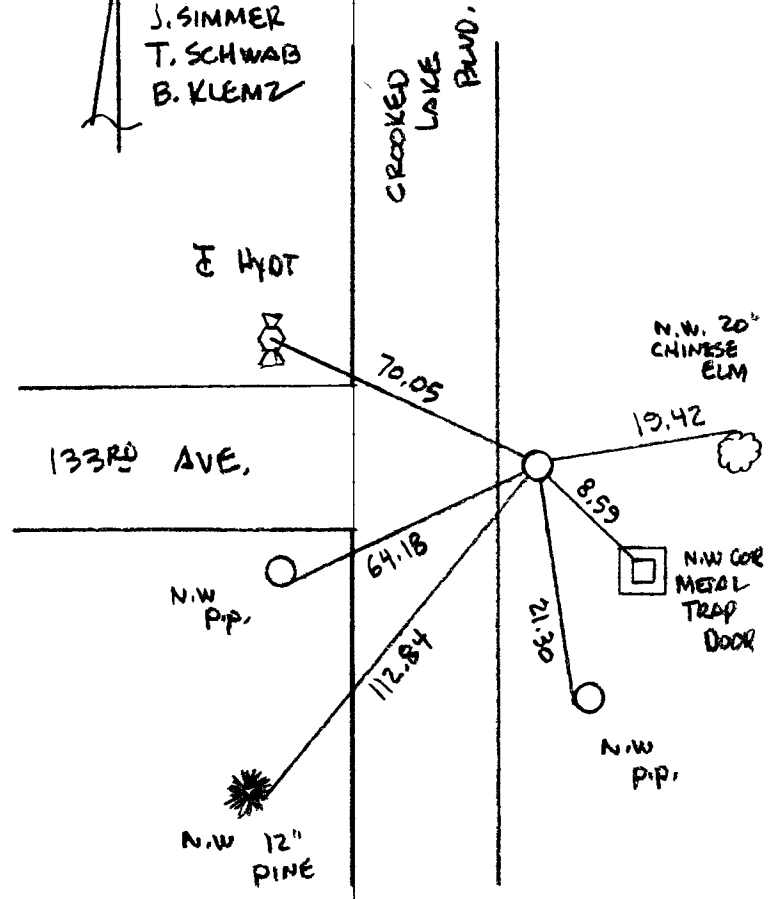
Revised date			Revised date			Revised date		
12	21	90						
8	17	94						
7	19	00						



NORTH 1/4 COR SEC 4 T31 R24
RETIED & GPS CAST IRON MONUMENT

7-19-00
J. SIMMER
T. SCHWAB
B. KLEMM

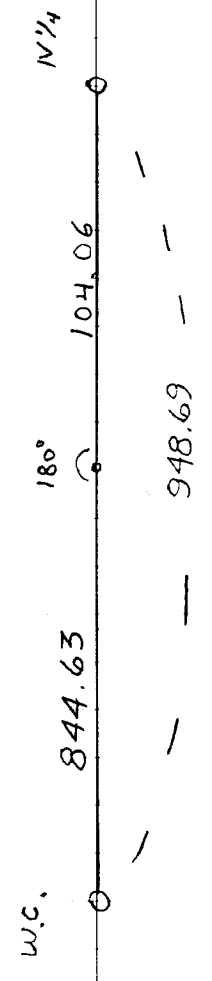
NATIONAL PERITRAST NO. 446



N 1/4 COR SEC. 4 T31 R24
TRANSIT TIED
SET PK

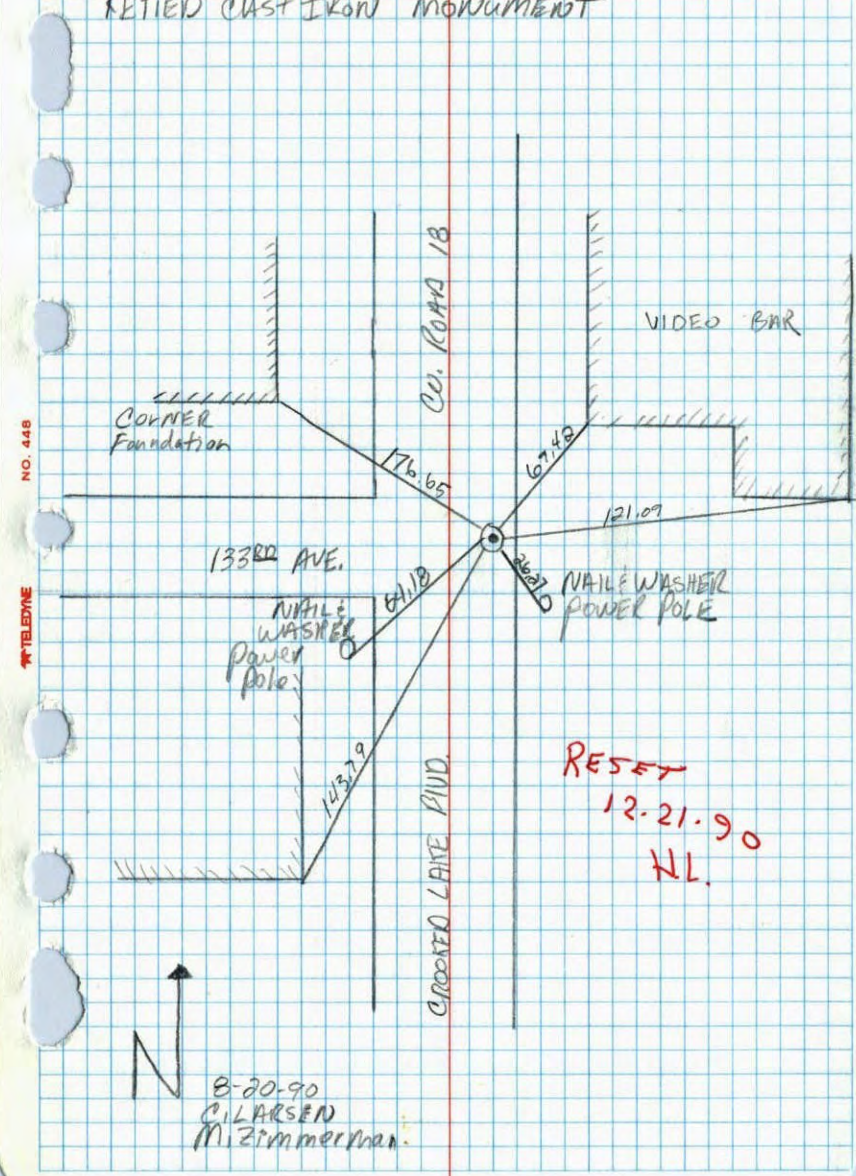
NATIONAL PERITRAST NO. 446

6-30-97
H. LARSON
B. KLEMM



NORTH 1/4 SEC. 4 T31 R24

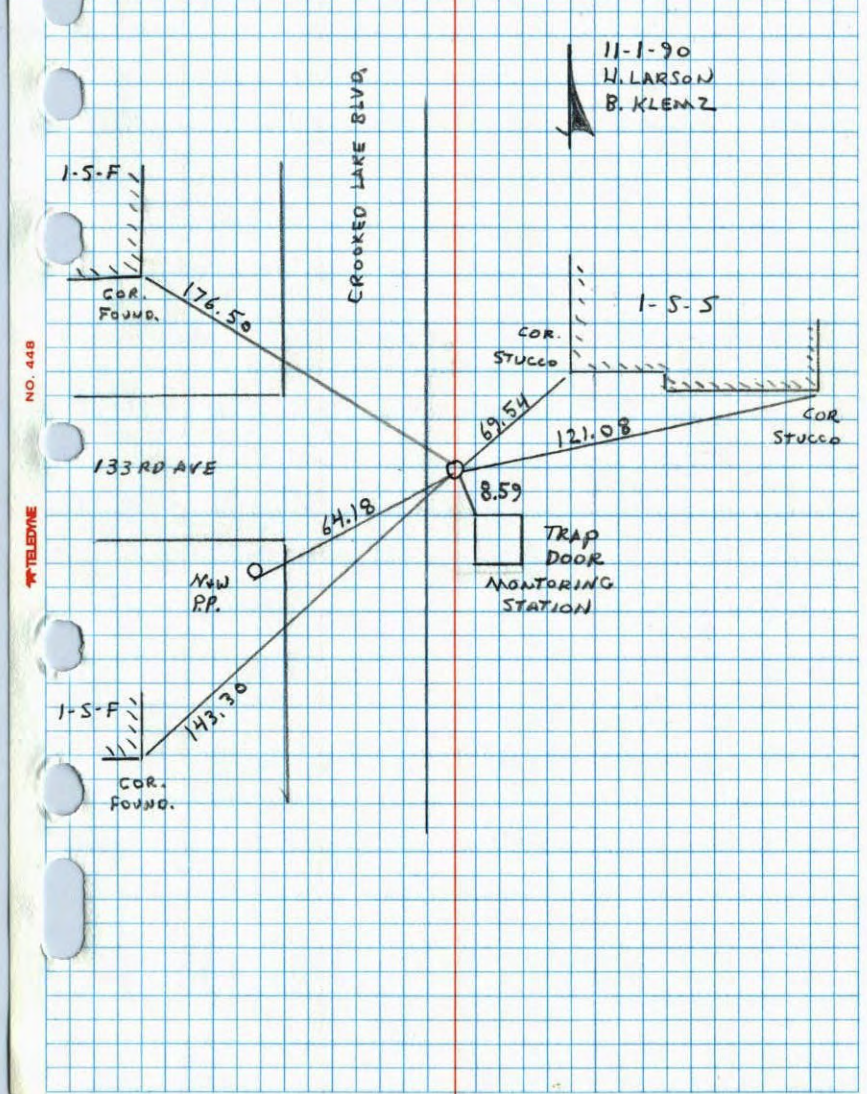
RESET CAST IRON MONUMENT



RESET
12-21-90
HL.

NORTH 1/4 COR. SECTION 4 T31 R24

RESET CAST IRON MONUMENT AFTER SEWER STATION CONSTRUCTION.

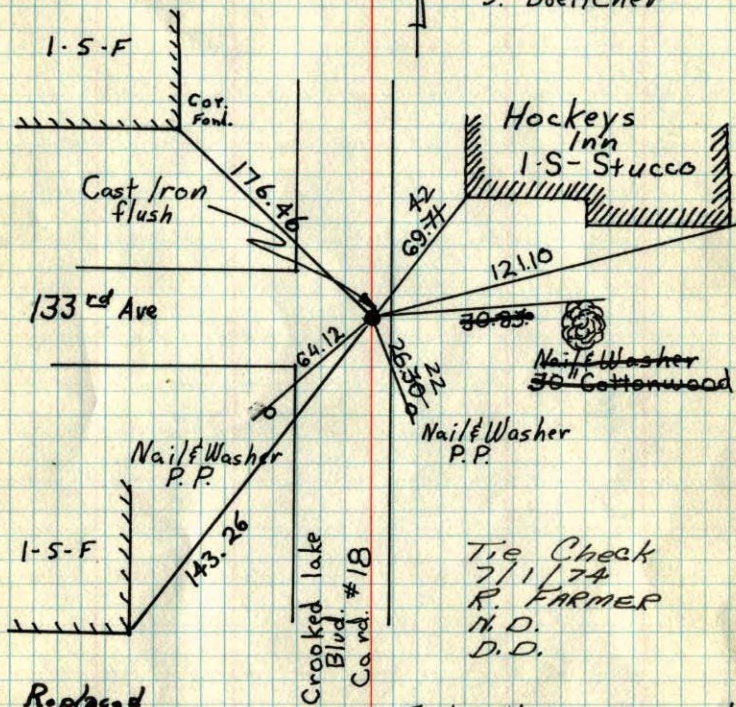


TRAP DOOR
MONITORING
STATION

N¹/₄ Cor. Sec. 4 T31 R24

Granite monument removed by construction
replaced with cast iron monument.

N April 23, 74
H. Larson
J. Boettcher



Replaced
5.4.77
H. Larson
B. Gutzko
J. Boettcher

Took add. ties for const.
8-21-75 H. Larson D. D.
B. Gutzko G. A.
75° *16 J. Boettcher B. S.

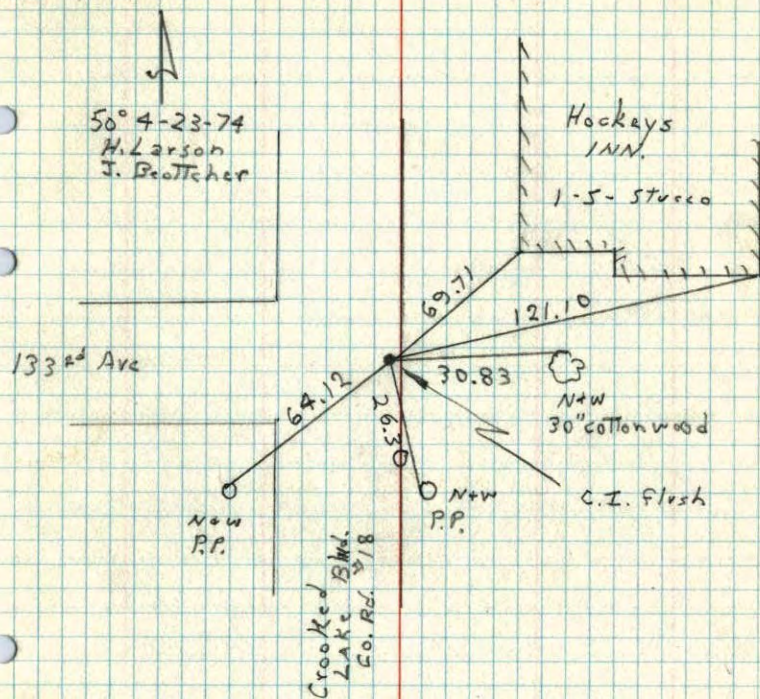
ROLAND W. ANDERSON COUNTY SURVEYOR ANOKA COUNTY, MINNESOTA

TEMPERATURE CORRECTED
AND HORIZONTALLY
TAPED MEASUREMENTS

N¹/₄ Cor. Sec. 4 T31 R24

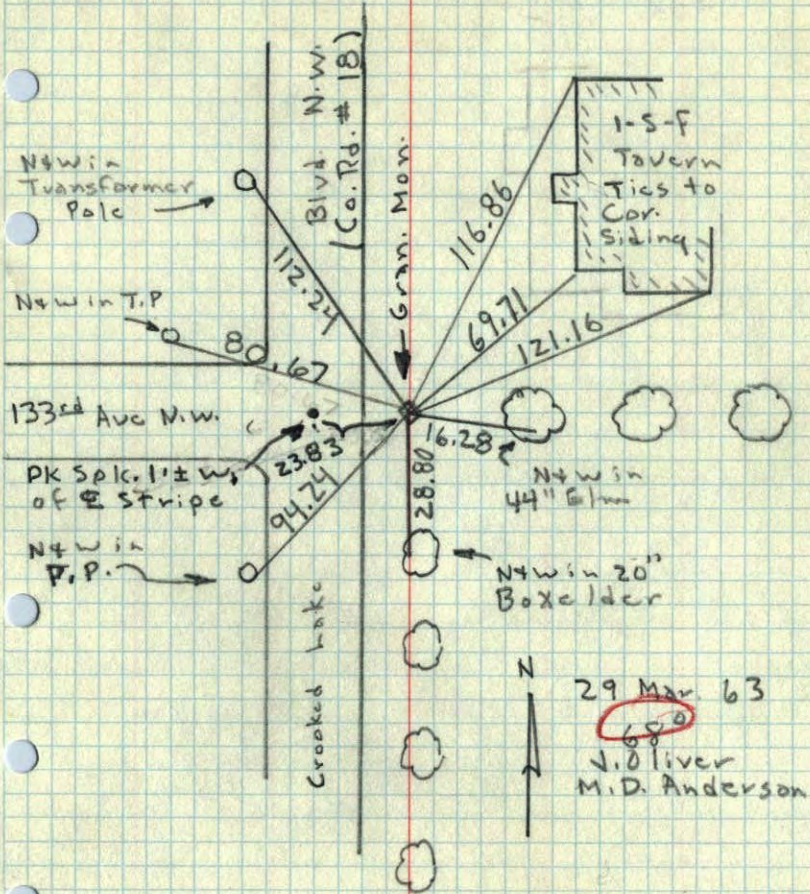
Granite removed for construction
Replaced with cast iron monument.

50° 4-23-74
H. Larson
J. Boettcher

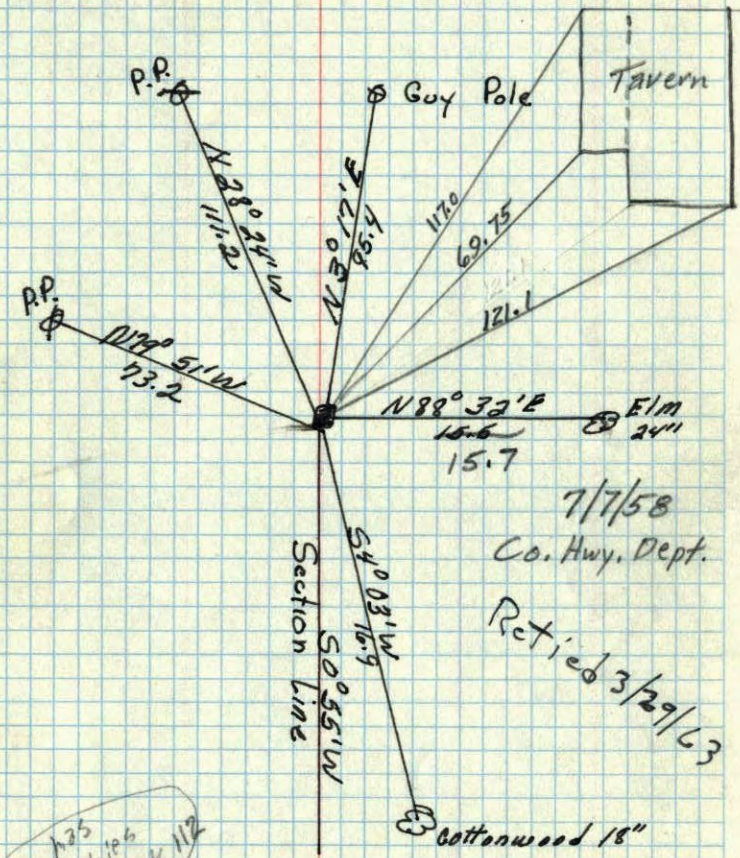


Crooked
Lake Blvd.
Co. Rd. #18

N¹/₄ Cor. Sec. 4, T31, R24
 Granite Mon. down 113'



N¹/₄ corner of Sec. 4 T.31, R24
 Granite ~~(erased out)~~

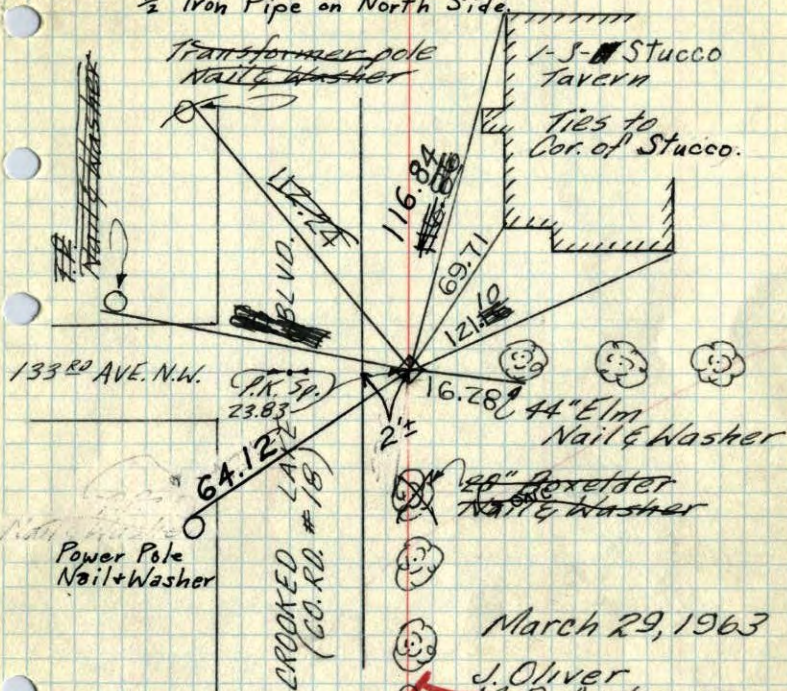


Howin has additional ties in His Field Book 112

Aug 18, 1944
 Cartwright

N¹/₄ Cor. Sec. 4-31-24

Granite Monument down 0.6' ±.
1/2" Iron Pipe on North Side.



133RD AVE. N.W.

P.K. 5P.
23.83

2'

44" Elm
Nail & Washer

28" Boxelder
Nail & Washer

Power Pole
Nail & Washer

CROOKED LANE
(CO. RD. #18)

March 29, 1963

J. Oliver
M. D. Anderson

Tie Check
July 28, 1966
H. Larson
D. Potter
G. Reimer

Tie Check
June 17, 1970
D. Powell
R. Brien
W. Westlander

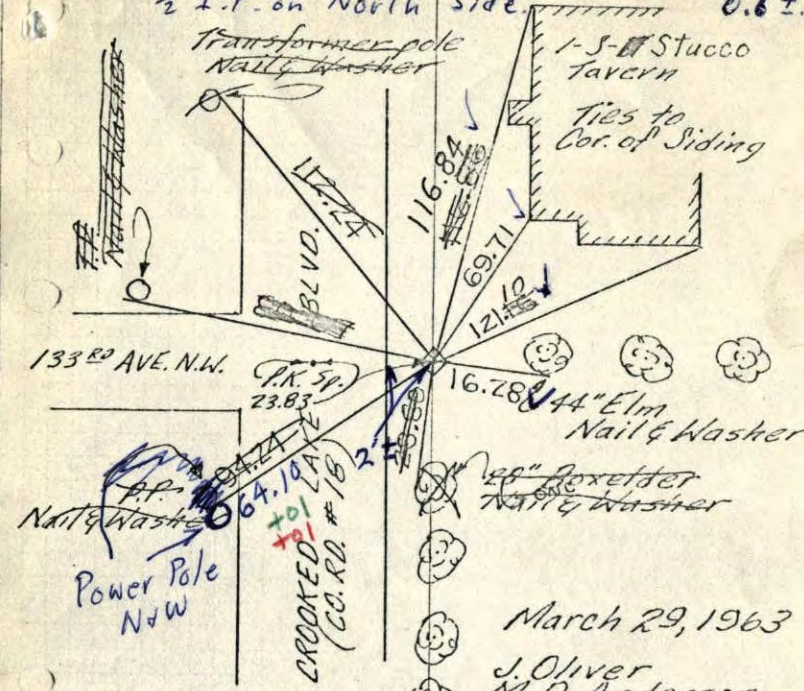
Cast iron set
Retied & redrawn
9-23-79
H. Larson

ROLAND W. ANDERSON
COUNTY SURVEYOR
ANOKA COUNTY, MINNESOTA

TEMPERATURE CORRECTED
AND HORIZONTALLY
TAPED MEASUREMENTS

N¹/₄ Cor. Sec. 4-31-24

Granite Monument down 0.6' ±.
1/2" I.P. on North Side.



133RD AVE. N.W.

P.K. 5P.
23.83

2'

44" Elm
Nail & Washer

28" Boxelder
Nail & Washer

Power Pole
N&W

CROOKED LANE
(CO. RD. #18)

March 29, 1963

J. Oliver
M. D. Anderson

Tie Check
July 28, 1966
H. Larson
D. Potter
G. Reimer

6/17/70
#10 - 85°
D. Powell
R. Brien
W. Westlander

ROLAND W. ANDERSON
COUNTY SURVEYOR
ANOKA COUNTY, MINNESOTA

TEMPERATURE CORRECTED
AND HORIZONTALLY
TAPED MEASUREMENTS

S.A.P. 62-618-02