

CERTIFICATE OF LOCATION OF GOVERNMENT CORNER

County of Anoka

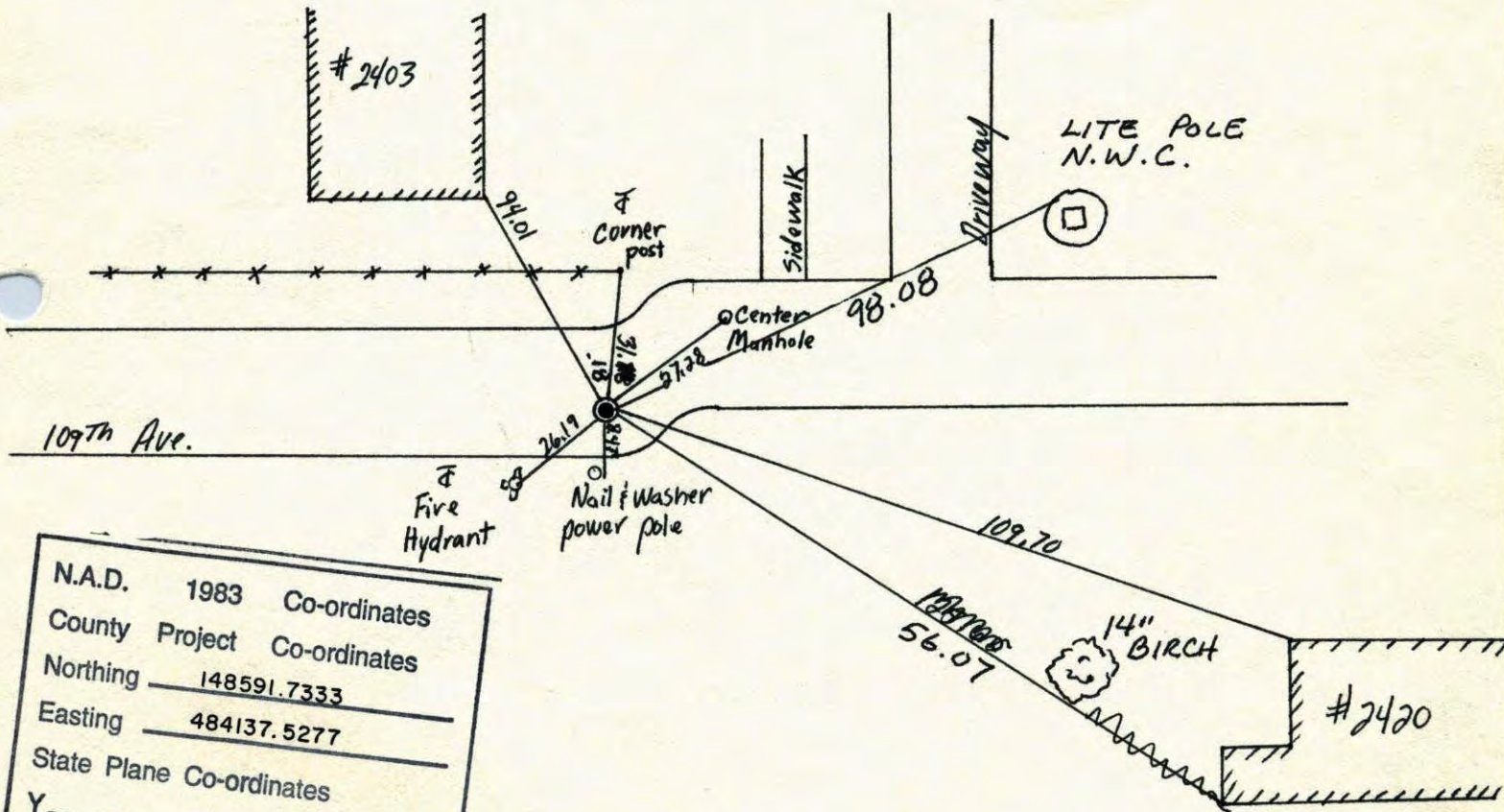
State of Minnesota

Northwest Corner of Sec. 22 Township 31 Range 24

I hereby certify that on the 28 day of July, 1960, I found the described corner which was evidenced by Concrete Monument

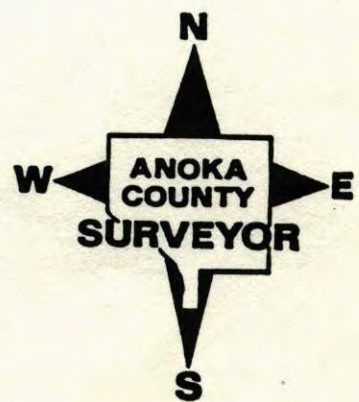
and I further certify that to perpetuate the location of said corner, I did, at the exact location thereof, place a permanent marker consisting of Cast Iron Monument.

which reference or witness monuments are located in the manner following:



N.A.D.	1983	Co-ordinates
County Project		Co-ordinates
Northing	148591.7333	
Easting	484137.5277	
State Plane Co-ordinates		
Y		
X		

Revised date	Revised date	Revised date
6-19-86	8-14-90	
7-31-69	8-12-94	
7-16-74	10-21-02	
6-23-77		
7-1-80		
7-18-83		
Redrawn 3-9-84		

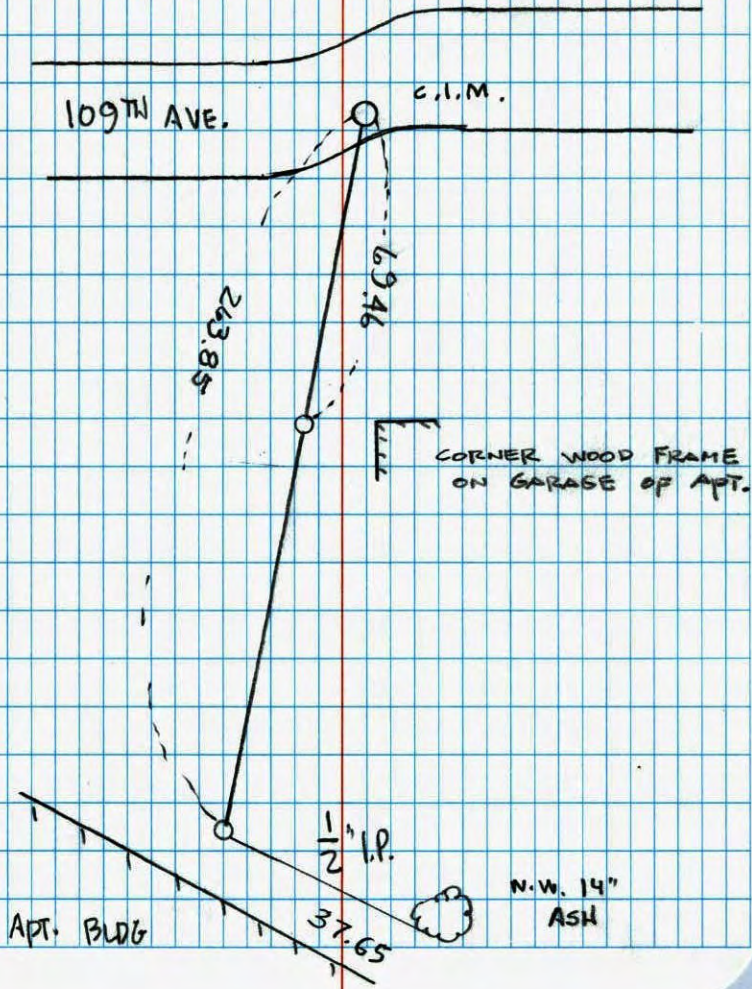


TRANSIT TIE 70

NORTH WEST COR. SEC. 22 T 31 R 24
 RETIED & REMOVED FOR CONST.

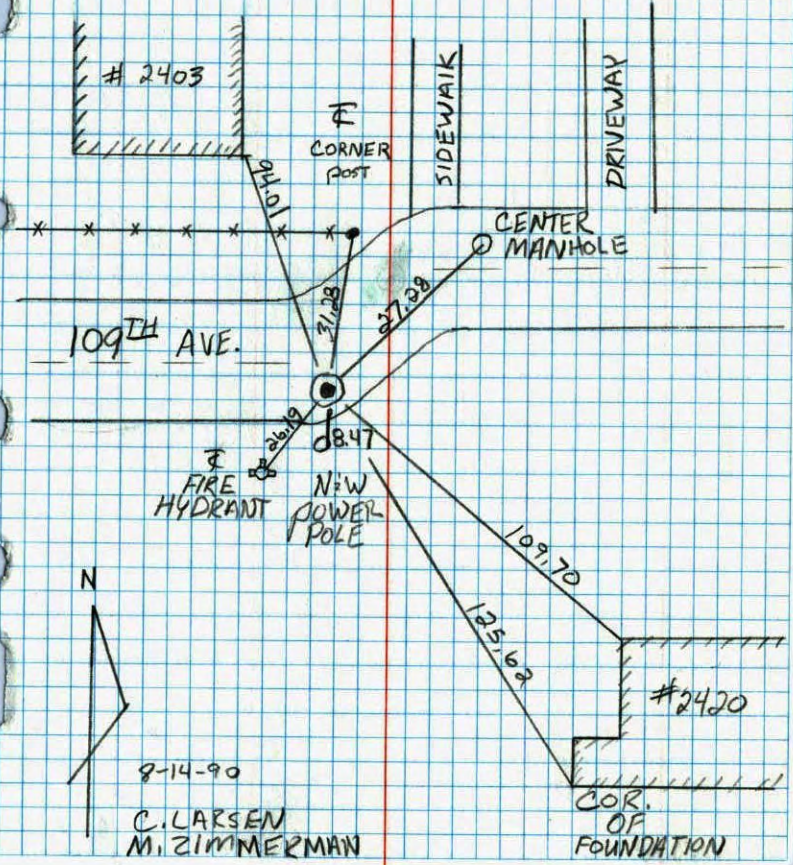
S-23-02
 J. SIMMER
 B. KLEMZ

NO. 446
 NATIONAL PRINTFAST



NORTHWEST SEC. 22 T31 R24
 RETIED CAST IRON MONUMENT

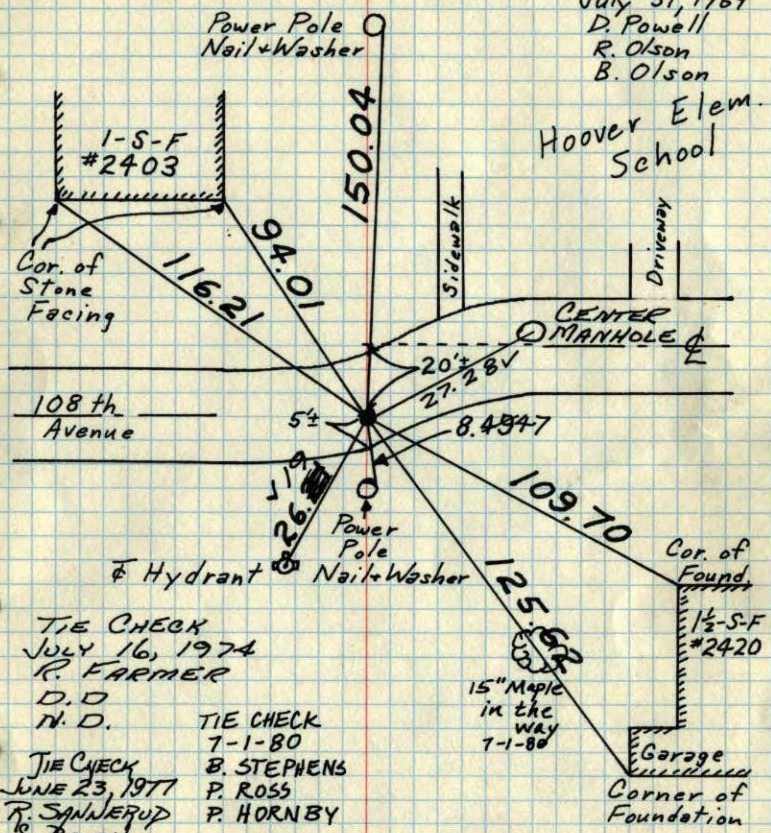
NO. 448
 TELETYPE



NW Cor. Sec. 22-T31-R24

Reset Cast Iron Monument flush by
Platting. PK nails 2.00' North + East.

July 31, 1969
D. Powell
R. Olson
B. Olson



TIE CHECK
JULY 16, 1974
R. FARMER
D.D.
N.D.

TIE CHECK
7-1-80
B. STEPHENS
P. ROSS
P. HORNBY
JUNE 23, 1977
R. SANNERUP
S. BRIEN
J. STEPHENS

15" Maple
in the
way
7-1-80

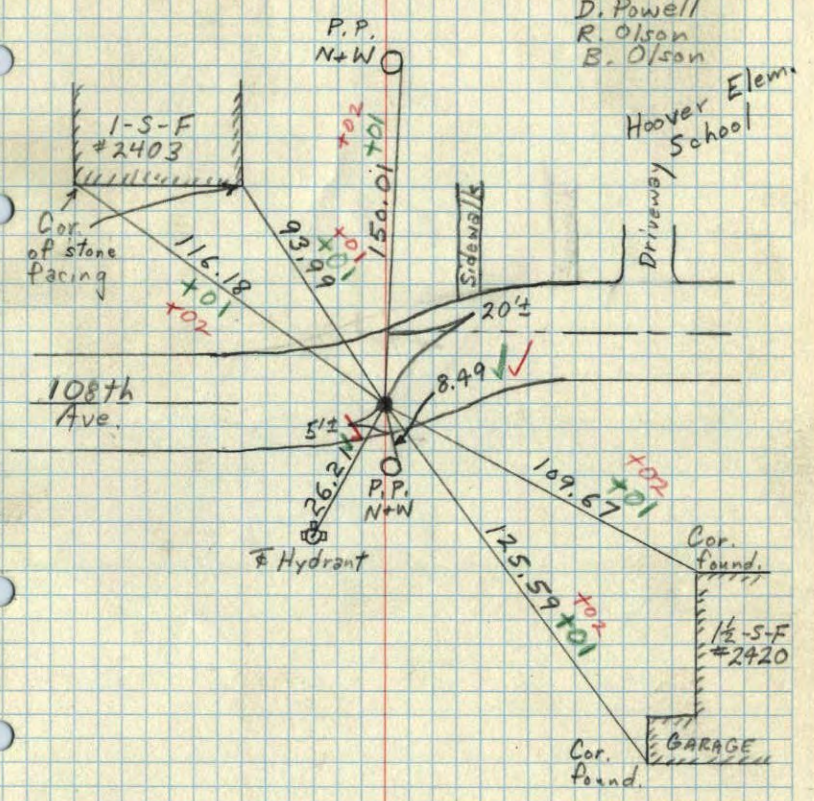
TEMPERATURE CORRECTED
AND HORIZONTALLY
TAPED MEASUREMENTS

ROLAND W. ANDERSON
COUNTY SURVEYOR
ANOKA COUNTY, MINNESOTA

NW Cor. Sec. 22-T31-R24

Set C.I. Mon. flush,
Reset by platting. PK's 2.00' N+E,
7/31/69

✓ #5-90° ✓
D. Powell
R. Olson
B. Olson



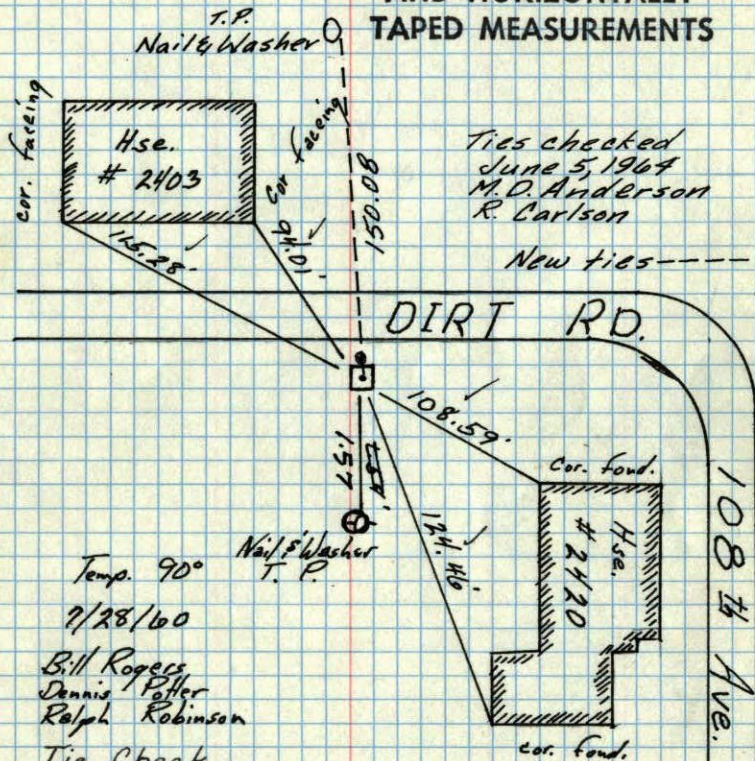
TEMPERATURE CORRECTED
AND HORIZONTALLY
TAPED MEASUREMENTS

ROLAND W. ANDERSON
COUNTY SURVEYOR
ANOKA COUNTY, MINNESOTA

NW Cor. Sec 22 - T31 - R24

Conc. Monument
down .3'
Set Open and Iron flush
on North Side with Mon.

TEMPERATURE CORRECTED
AND HORIZONTALLY
TAPED MEASUREMENTS



Temp. 90°
7/28/60

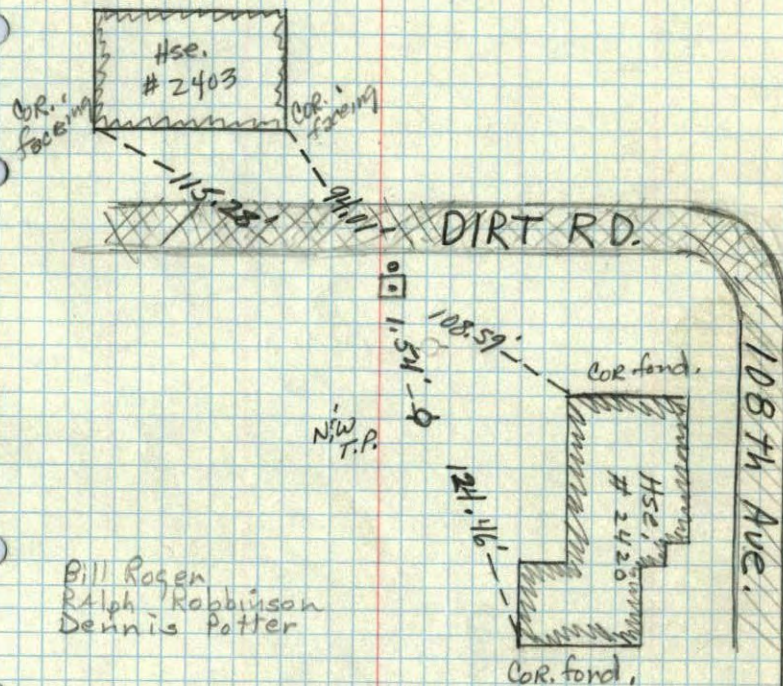
Bill Rogers
Dennis Potter
Ralph Robinson

Tie Check
July 13, 1966
H. Larson
D. Potter

ROLAND W. ANDERSON
COUNTY SURVEYOR
ANOKA COUNTY, MINNESOTA

NW Cor. Sec. 22, T31, R24
Conc. Monument
down .3'
Open end Iron flush
with Mon

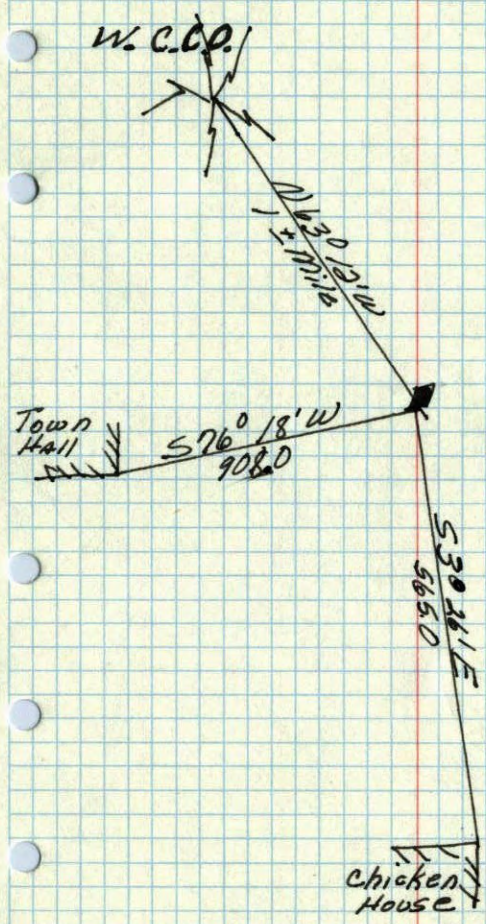
7/28/60
90°



Bill Rosen
Ralph Robinson
Dennis Potter

7/28/60

NE
22
SE corner of Sec. 16 T31 R24 ✓



May 20, 1944
Cartwright