

# CERTIFICATE OF LOCATION OF GOVERNMENT CORNER

County of Anoka

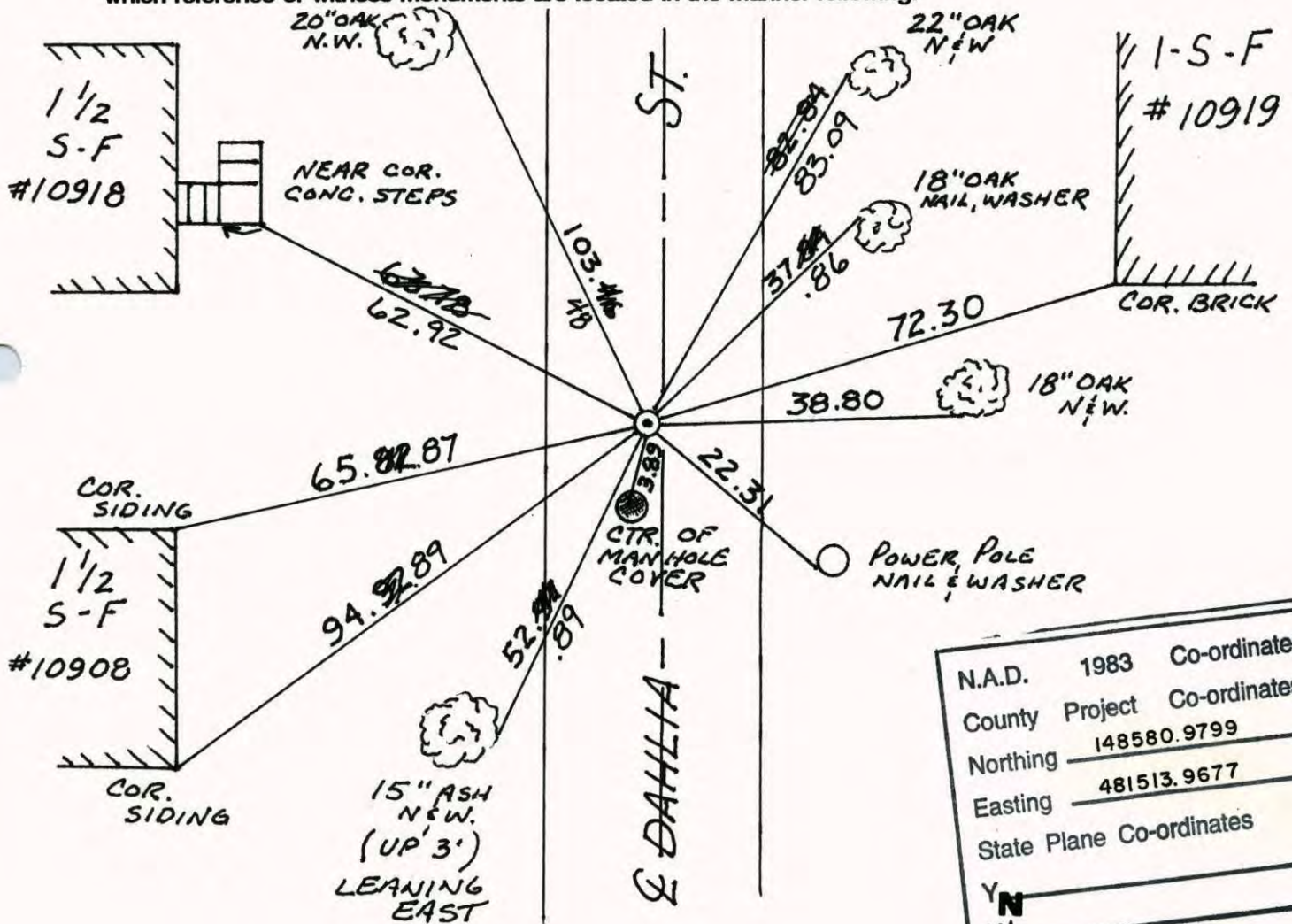
State of Minnesota

NORTH 1/4 Corner of Sec. 21 Township 31 Range 24

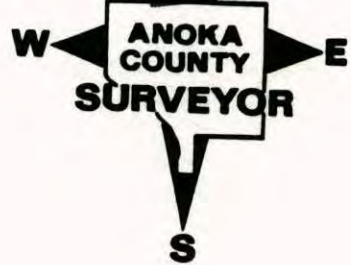
I hereby certify that on the 29 day of JULY, 1960, I found the described corner which was evidenced by CONC. MON.

and I further certify that to perpetuate the location of said corner, I did, at the exact location thereof, place a permanent marker consisting of CAST IRON MON.

which reference or witness monuments are located in the manner following:



N.A.D.	1983	Co-ordinates
County	Project	Co-ordinates
Northing	148580.9799	
Easting	481513.9677	
State Plane Co-ordinates		
Y	N	
X	X	
Date	_____	



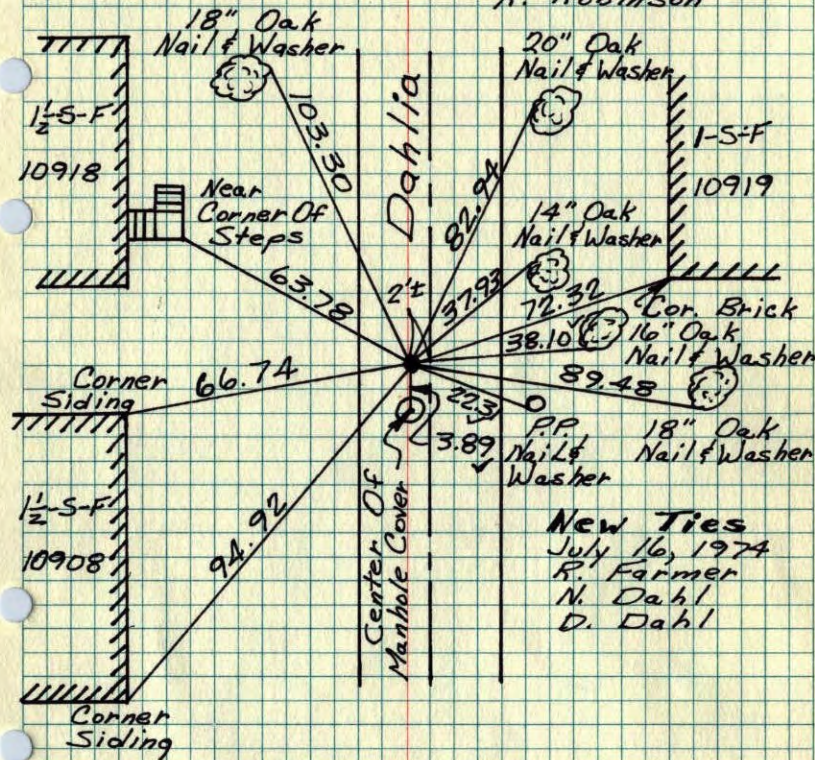
Revised date	Revised date	Revised date
6-13-86		
8-21-94		
8-30-01		
4-10-06		

N<sup>1</sup>/<sub>4</sub> Cor. Sec 21-T31-R24

Reset Corner From Remaining Ties.

Set Cast Iron Monument With PK's  
2.00' N & E.

July 29, 1960  
D. Potter  
R. Robinson



New Ties  
July 16, 1974  
R. Farmer  
N. Dahl  
D. Dahl

TIE CHECK JUNE 23, 1977 R. SANNEBUD J. BRIEN J. STEPHENS	TIE CHECK 6-26-80 B. STEPHENS P. ROSS P. HORNBY
--	---

ROLAND W. ANDERSON COUNTY SURVEYOR ANOKA COUNTY, MINNESOTA

TEMPERATURE CORRECTED AND HORIZONTALLY TAPED MEASUREMENTS

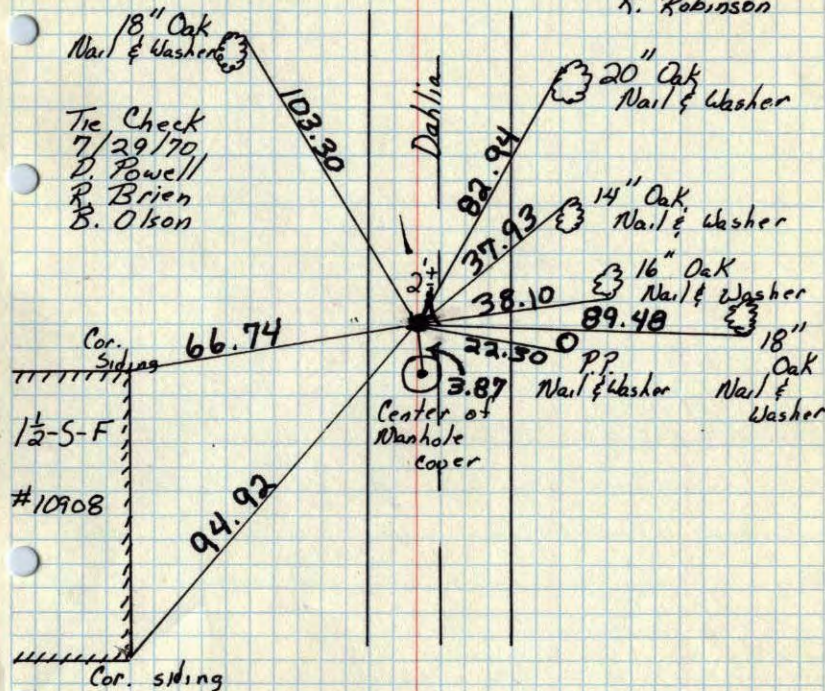
Rmg

N<sup>1</sup>/<sub>4</sub> Cor. Sec. 21-T31-R24

Reset corner from remaining ties.

Set cast iron monument with PK's 2.00' N & E.

7/29/60  
D. Potter  
R. Robinson

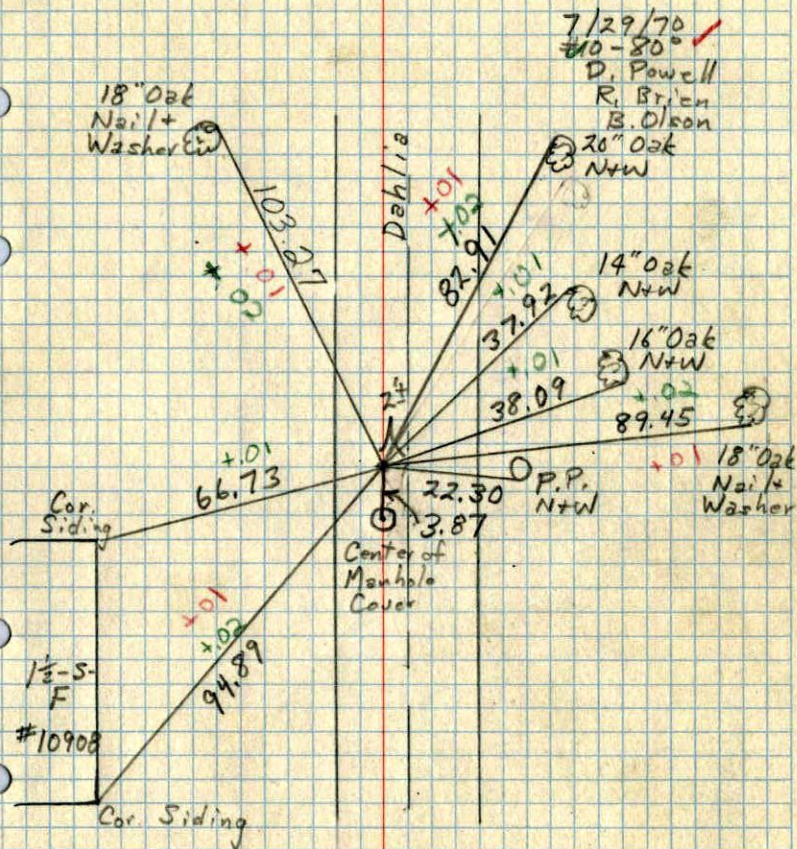


ROLAND W. ANDERSON  
COUNTY SURVEYOR  
ANOKA COUNTY, MINNESOTA

TEMPERATURE CORRECTED  
AND HORIZONTALLY  
TAPED MEASUREMENTS

N<sup>1</sup>/<sub>4</sub> Cor. Sec. 21-T31-R24

Reset corner from <sup>remaining</sup> ties. Set PK Nail.  
PK's 2.00' N+E.

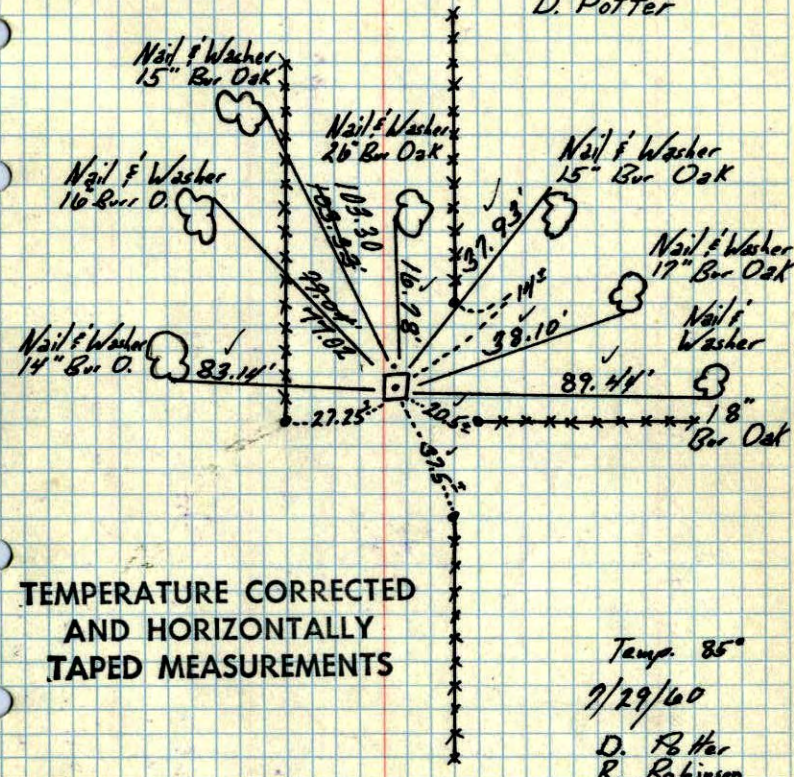


N<sup>1</sup>/<sub>4</sub> Cor. Sec 21 - T31 - R24

Conc. Man. Flush  
Iron on North flush

Ties checked June 4, 1967  
M.D. Anderson  
R. Carlson

Tie Check  
July 13, 1966  
H. Larson  
D. Potter



TEMPERATURE CORRECTED  
AND HORIZONTALLY  
TAPED MEASUREMENTS

Temp. 85°  
7/29/60  
D. Potter  
R. Robinson

ROLAND W. ANDERSON  
COUNTY SURVEYOR  
ANOKA COUNTY, MINNESOTA

N 1/4 Cor. Sec 21 - T31 - R24

Conc. Mon. Flush  
Iron on North flush

Concrete Mon. Gone. See new ties.

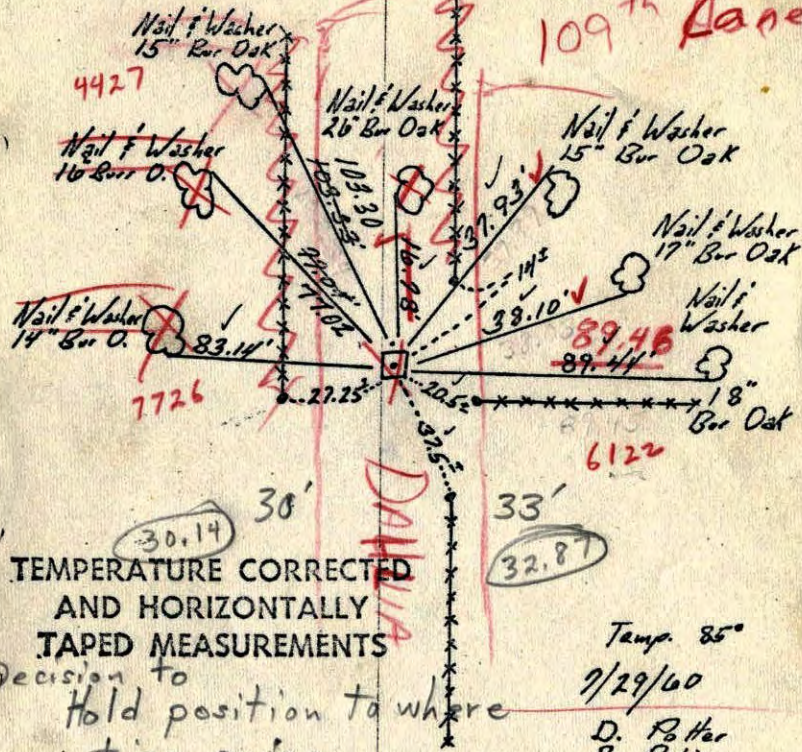
Ties checked June 4, 1964

M.D. Anderson  
R. Carlson

Tie Check DP

July 13, 1966  
H. Larson  
D. Potter

109<sup>th</sup> Lane



TEMPERATURE CORRECTED  
AND HORIZONTALLY  
TAPED MEASUREMENTS

Decision to  
Hold position to where  
ties swing.

Temp. 85°

7/29/60

D. Potter  
R. Robinson

ROLAND W. ANDERSON  
COUNTY SURVEYOR  
ANOKA COUNTY, MINNESOTA

103.30  
66.91  
36.49

67.01  
22.39  
44.62

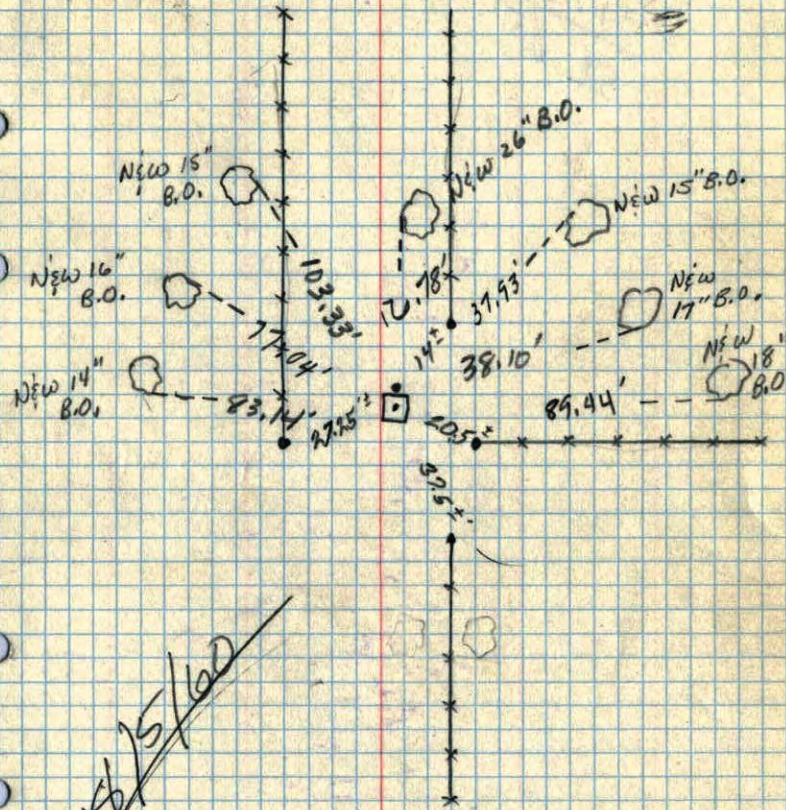
89.41  
66.94  
22.47

66.91  
36.40  
103.31

N 1/4 Sec 21, T31, R24

7/29/60  
85°

Conc. Mon Flush  
Iron North flush



~~7/29/60~~

N. <sup>21</sup> § 14 corner of Sec. 16 T. 31 R. 24 ✓

Concrete Monument Flash

Ties By  
Don Coulter  
10-7-58

16" OAK



76.6

20" OAK old Blaze

~~80.14"~~



N 20° 5' E  
16.7

80.15"

N 84° 25' E



88.8

37.5 ~~3~~ 14" OAK  
Old Blaze

S 70° 9' E  
81.2

81.2

16" OAK  
old Blaze



80.8"

May 26, 1944  
Coulter, Don