

CERTIFICATE OF LOCATION OF GOVERNMENT CORNER

County of Anoka

State of Minnesota

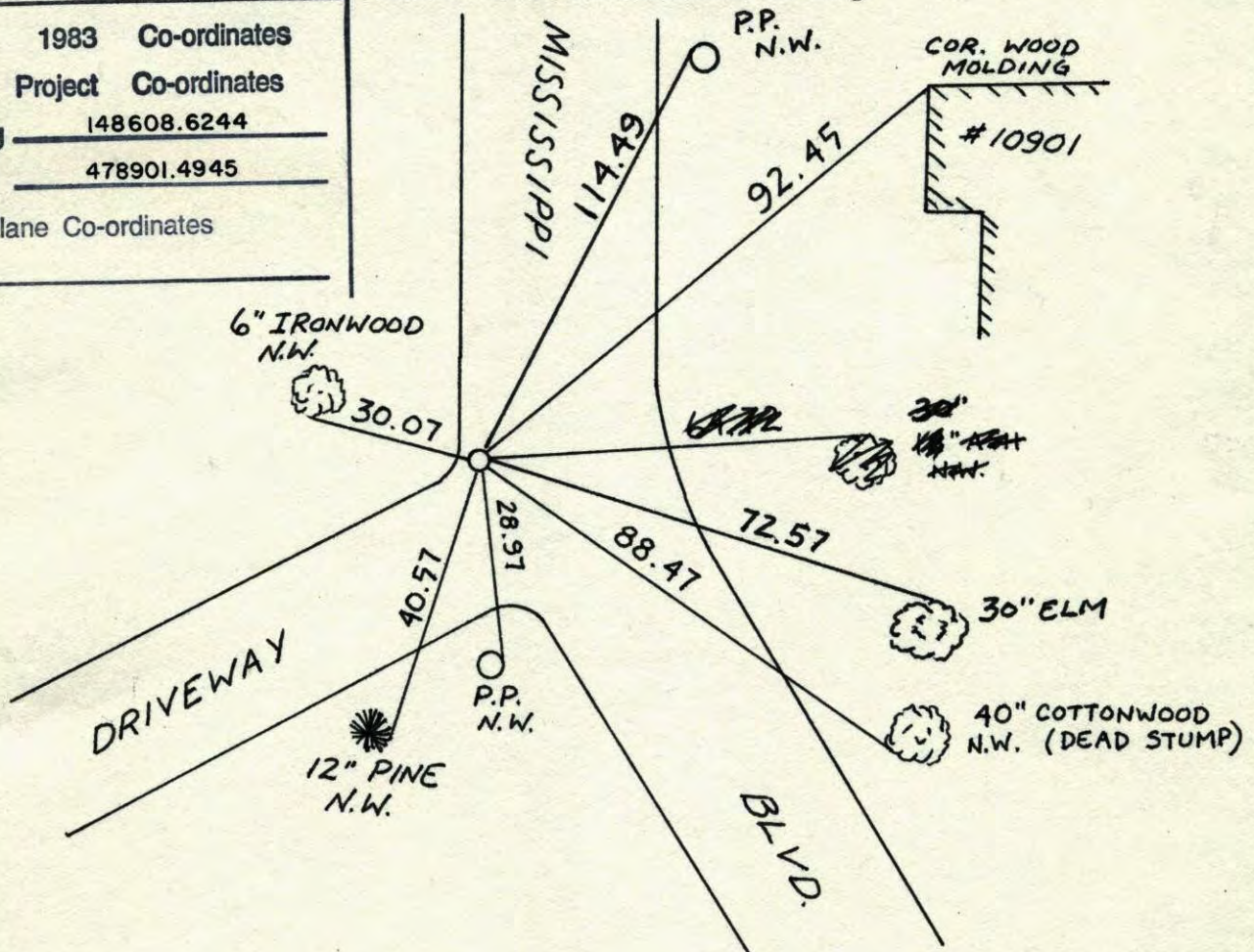
NORTHWEST Corner of Sec. 21 Township 31 Range 24

I hereby certify that on the 28 day of MAY, 1962, I found the described corner which was evidenced by 4" x 4" CONC. MON.

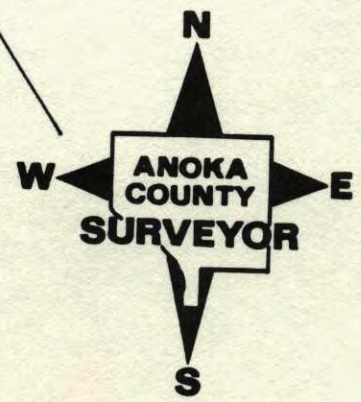
and I further certify that to perpetuate the location of said corner, I did, at the exact location thereof, place a permanent marker consisting of CAST IRON ON TOP OF BROKEN CONCRETE

which reference or witness monuments are located in the manner following:

N.A.D.	1983	Co-ordinates
County	Project	Co-ordinates
Northing	<u>148608.6244</u>	
Easting	<u>478901.4945</u>	
State Plane	Co-ordinates	
Y	_____	

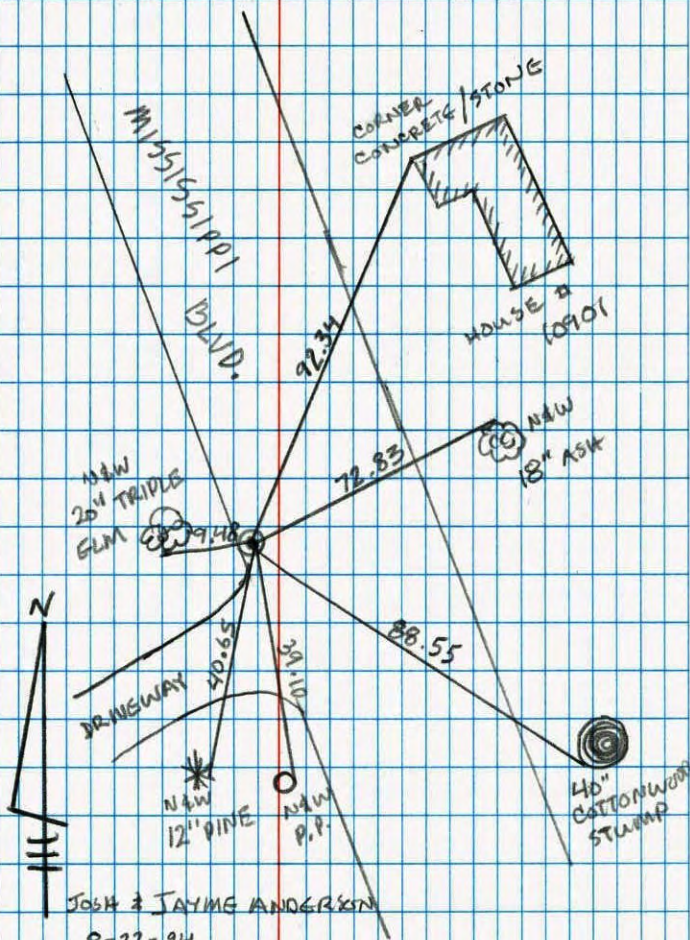


Revised date	Revised date	Revised date
<u>8-21-94</u>		
<u>4-14-97</u>		
<u>8-9-01</u>		



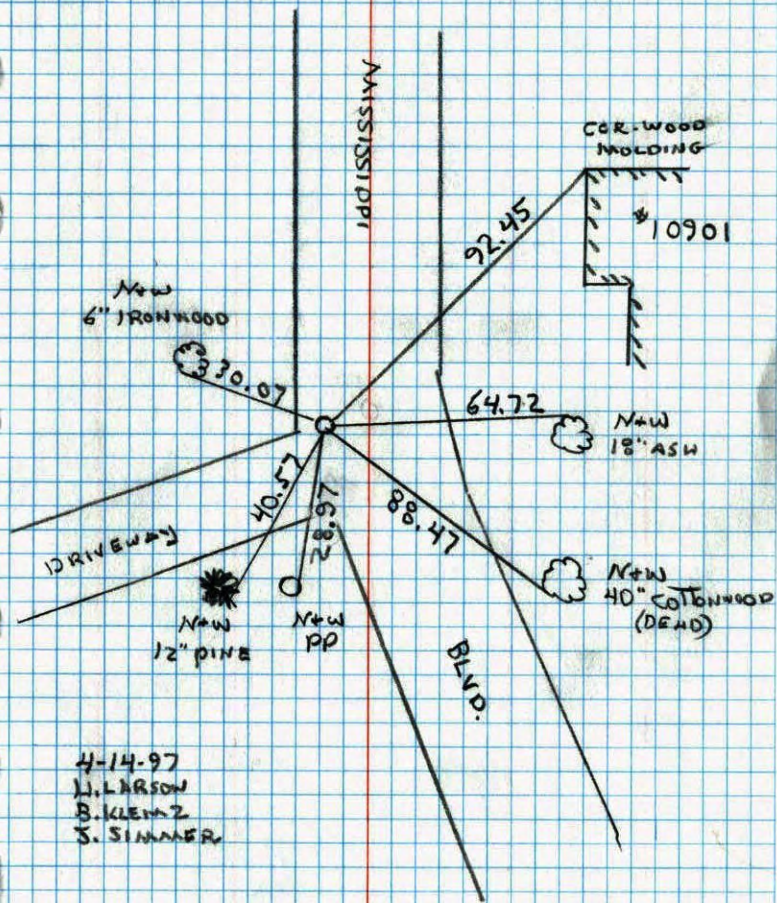
NORTHWEST SEC. 21 TW. 31 R. 24

RETIE CAST IRON MONUMENT



NW CORNER SECTION 21 T31 R24

REPLACED CAST IRON AFTER CONST.
BROKEN CONC. STILL THERE C.I. ON TOP.



4-14-97
L. LARSON
B. KLEMZ
S. SIMMER

NO. 448

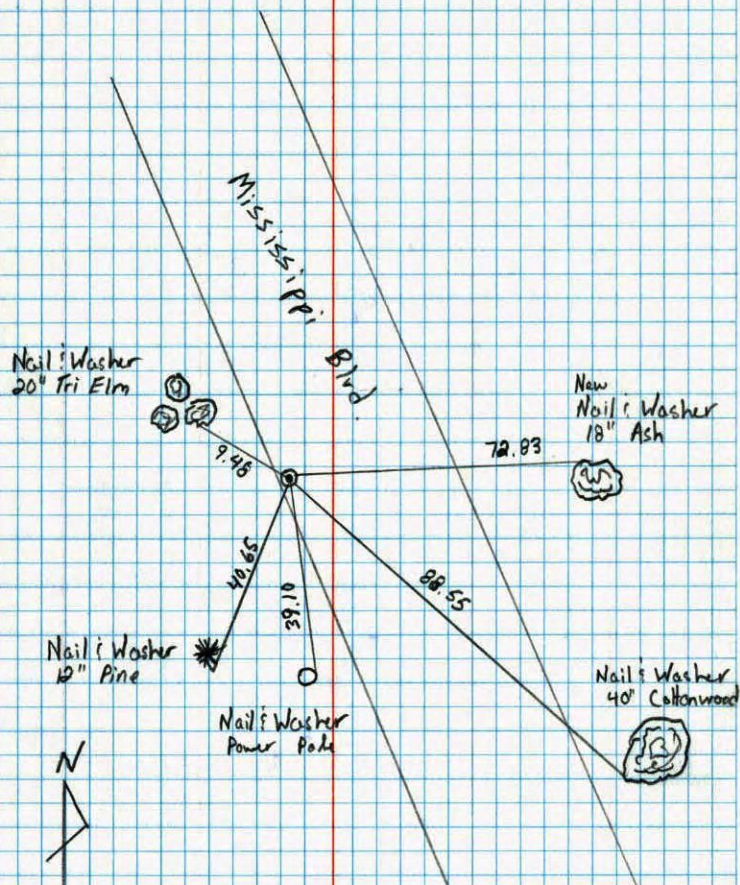
NATIONAL PRIORITY

NO. 446

NATIONAL PRIORITY

Northwest Corner Sec. 21 T31 R24

Relied Cast Iron Monument



8-14-90
M. Zimmerman
C. Larsen

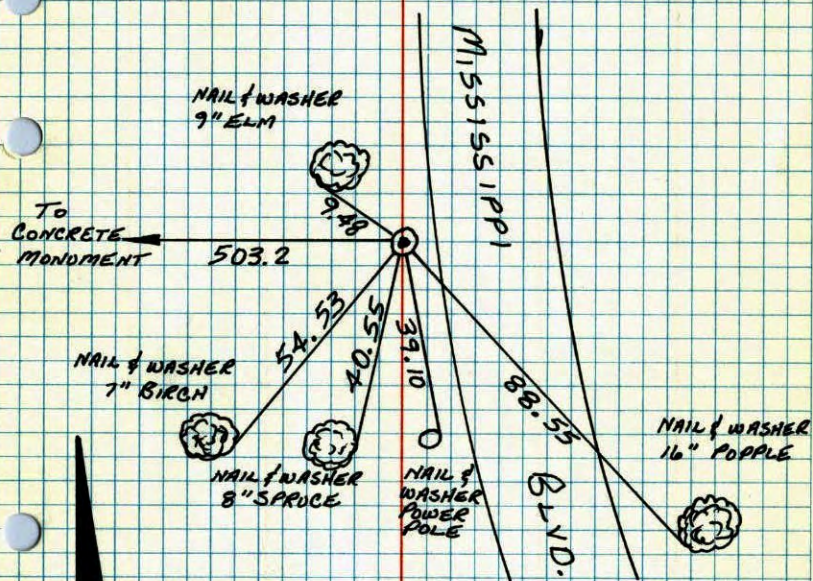
N.W. Cor. Sec. 21 - T31 - R24

FOUND 4'x4' CONCRETE MONUMENT DOWN 0.5'±.

1 AUG 68
D. POWELL
R. OLSON
P. PIEN

SET SHORT CAST IRON MONUMENT FLUSH ON TOP OF
BROKEN CONCRETE. PK'S 2.00' NORTH AND EAST

31 JUL 69
D. POWELL
R. OLSON
B. OLSON



TIE CHECK
12 JUL 74
R. FARMER

TIE CHECK
23 JUN 77
R. SANNEKUD
S. BRIEN
J. STEPHENS

TIE CHECK
6-26-80
B. STEPHENS
P. ROSS
P. HORNBY

TEMPERATURE CORRECTED
AND HORIZONTALLY
TAPED MEASUREMENTS

ROLAND W. ANDERSON
COUNTY SURVEYOR
ANOKA COUNTY, MINNESOTA

NW Cor. Sec. 21-T31-R24

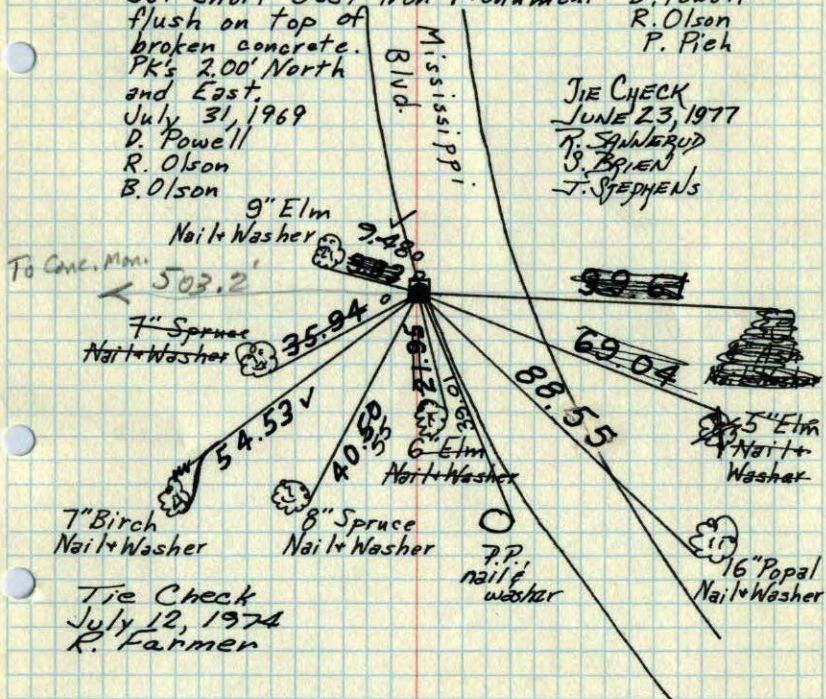
4"x4" Concrete Monument down 0.5'±.

~~1/2" Iron Pipe on North Side flush with top of monument.~~

1/2" Iron Pipe 2.2' West and 0.3' South.

3/8" Iron Pipe 0.70' North.

Additional ties taken for construction.

Set short Cast Iron Monument
flush on top of
broken concrete.
PK's 2.00' North
and East.August 1, 1968
D. Powell
R. Olson
P. Pich
July 31, 1969
D. Powell
R. Olson
B. OlsonTIE CHECK
JUNE 23, 1977
R. SANDERUD
J. BROWN
J. STEPHENSTie Check
July 12, 1974
R. FarmerTEMPERATURE CORRECTED
AND HORIZONTALLY
TAPED MEASUREMENTSROLAND W. ANDERSON
COUNTY SURVEYOR
ANOKA COUNTY, MINNESOTA

NW Cor. Sec. 21-T31-R24

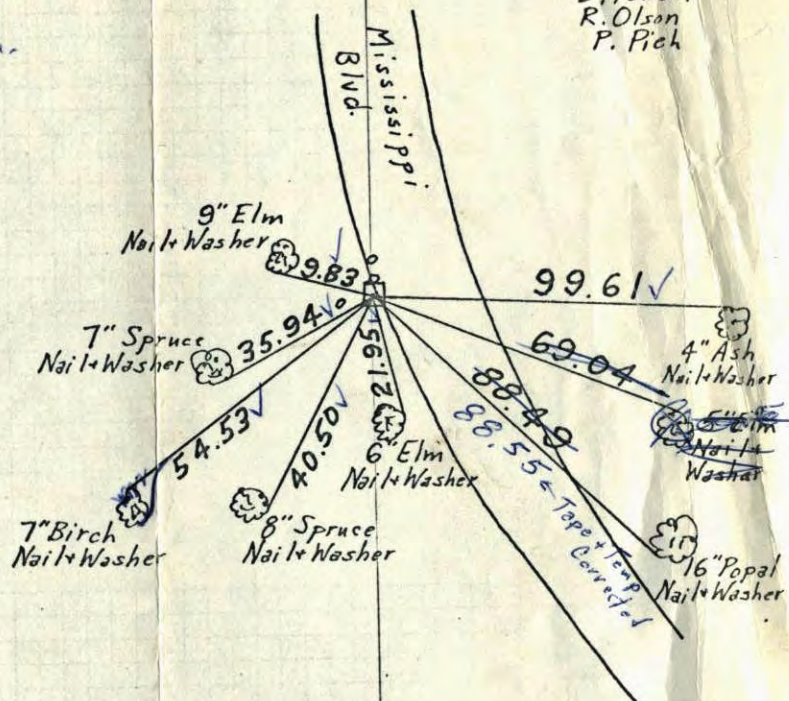
4"x4" Concrete Monument down 0.5'±.

~~1/2" Iron Pipe on North Side flush with top of monument.~~

1/2" Iron Pipe 2.2' West and 0.3' South.

3/8" Iron Pipe 0.70' North.

Additional ties taken for construction.

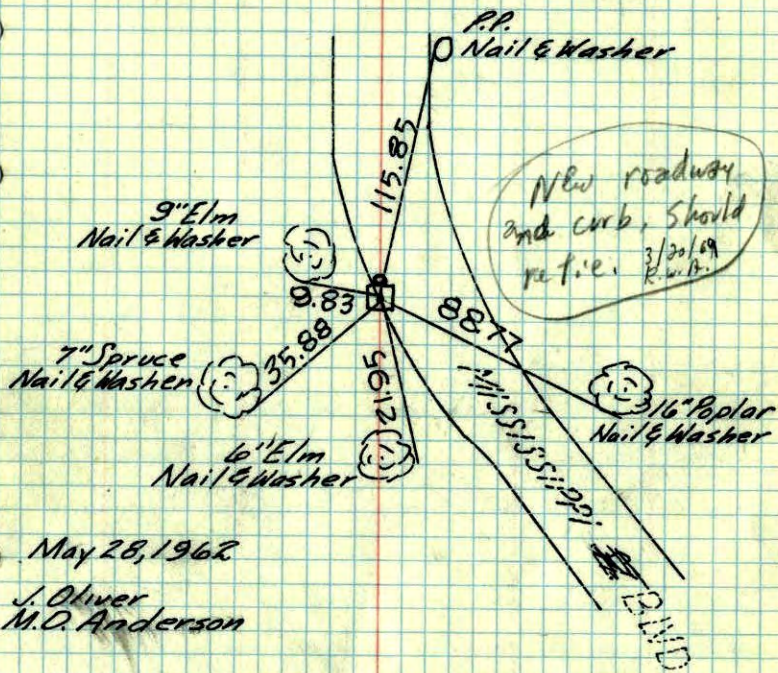
Found Conc. Mon
broken + leaning
North. Iron Pipe
leaning North, too.Set Short C.I. Mon.
on top of broken
concrete. C.I. flush.
PK's 2.00' N+E.7/31/69
D. Powell
R. Olson
B. OlsonAugust 1, 1968
D. Powell
R. Olson
P. PichTEMPERATURE CORRECTED
AND HORIZONTALLY
TAPED MEASUREMENTSROLAND W. ANDERSON
COUNTY SURVEYOR
ANOKA COUNTY, MINNESOTA

N.W. Cor. Sec. 21-31-24

found 4"x4" Conc. Monument down 0.5'

set 1/2" Iron pipe on north side flush with top of monument.

Also found 1/2" Iron pipe 2.2' W. & 3 S.



May 28, 1962

J. Oliver
M.O. Anderson

TEMPERATURE CORRECTED
AND HORIZONTALLY
TAPED MEASUREMENTS

Tie Check
July 14, 1966
H. Larson
D. Potter
G. Reimer

ROLAND W. ANDERSON
COUNTY SURVEYOR
ANOKA COUNTY, MINNESOTA

N.W. Cor. Sec. 21-31-24

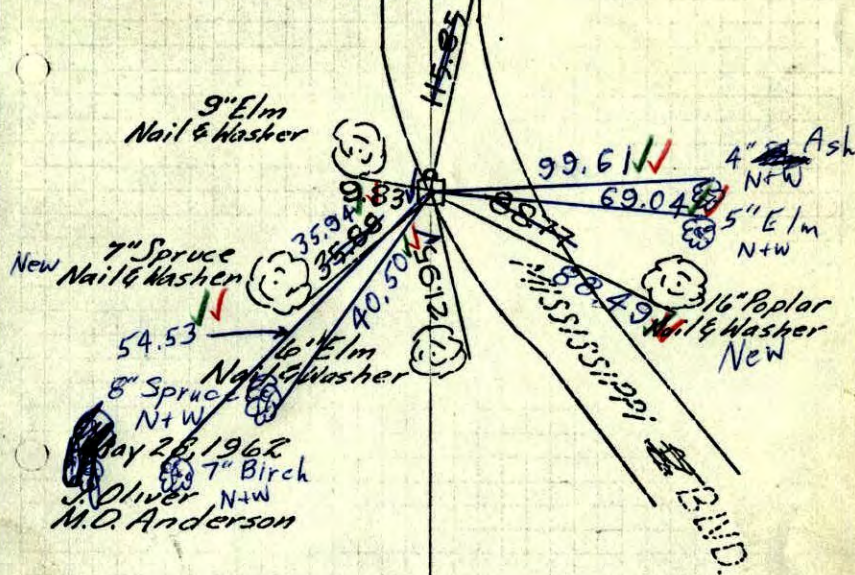
found 4"x4" Conc. Monument down 0.5'

set 1/2" Iron pipe on north side flush with top of monument.

Also found 1/2" Iron pipe 2.2' W. & 3 S.

Also found 3/4" Iron pipe 0.70' N.

Additional ties taken for construction



May 28, 1962
J. Oliver
M.O. Anderson

TEMPERATURE CORRECTED
AND HORIZONTALLY
TAPED MEASUREMENTS

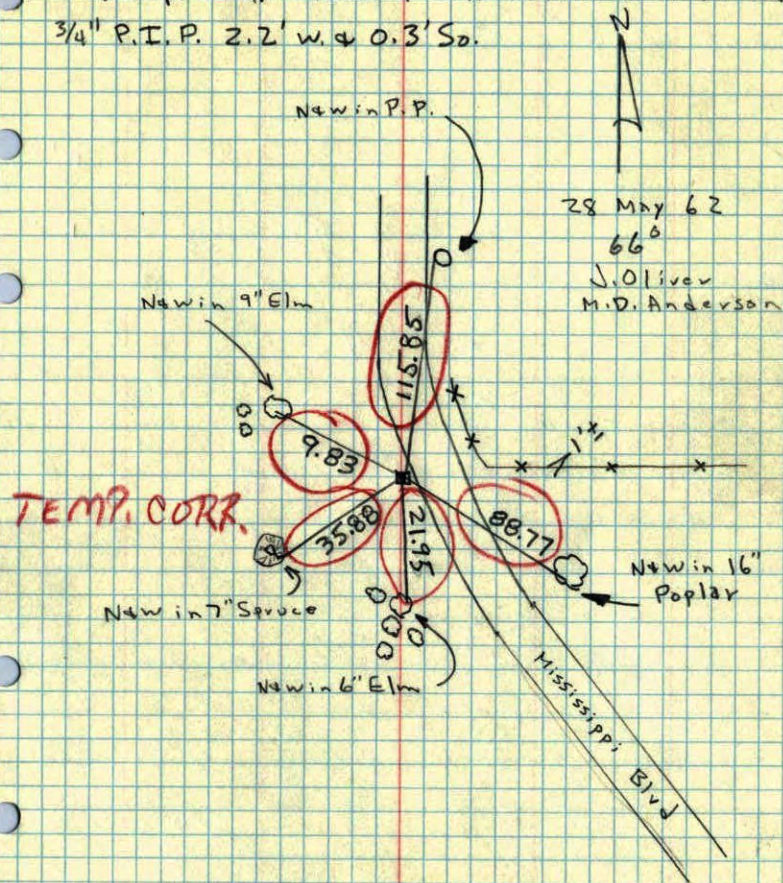
Tie Check
July 14, 1966
H. Larson
D. Potter
G. Reimer

8/1/68
#7-72
D. Powell
P. Pieh
R. Olson

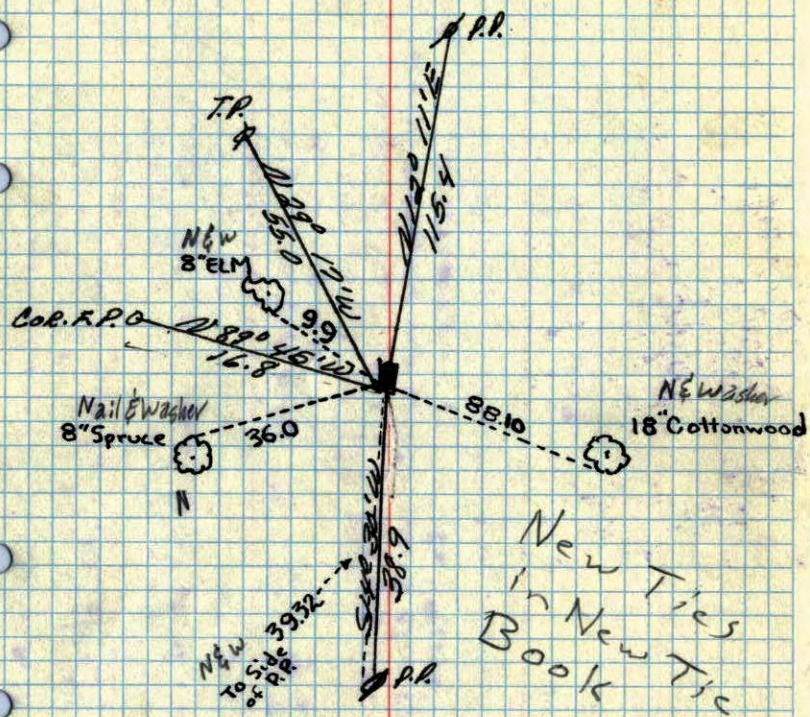
ROLAND W. ANDERSON
COUNTY SURVEYOR
ANOKA COUNTY, MINNESOTA

NW Cor. Sec. 21, T31, R24

Found 4" Sq. Conc. Mon. down 0.5' - Set
 3/4" I.P. on No. Side Flush with Mon. Found
 3/4" P.I.P. 2.2' W. & 0.3' So.



NW corner of Sec. 21 + 31. R24
 Concrete Monument down 6"

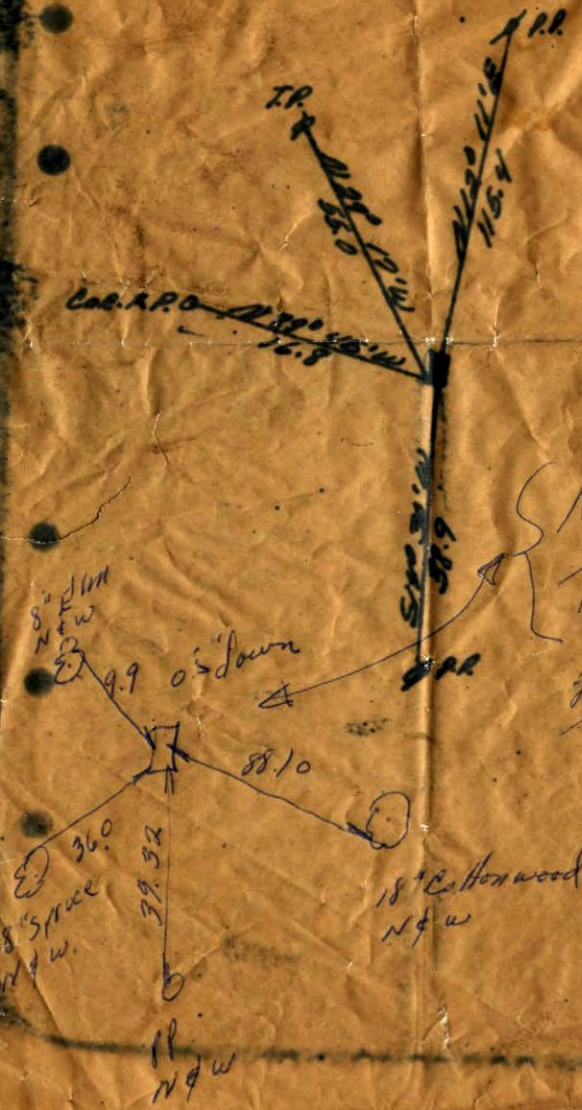


March 23, 1961
 Caswell

May 24, 1964
 Cartwright

55

NW corner of Sec. 21 + 31. R24
Concrete Monument down 6"



New
Ties
23 March 1961

11/26/61
C.C. R.R.