

CERTIFICATE OF LOCATION OF GOVERNMENT CORNER

County of Anoka

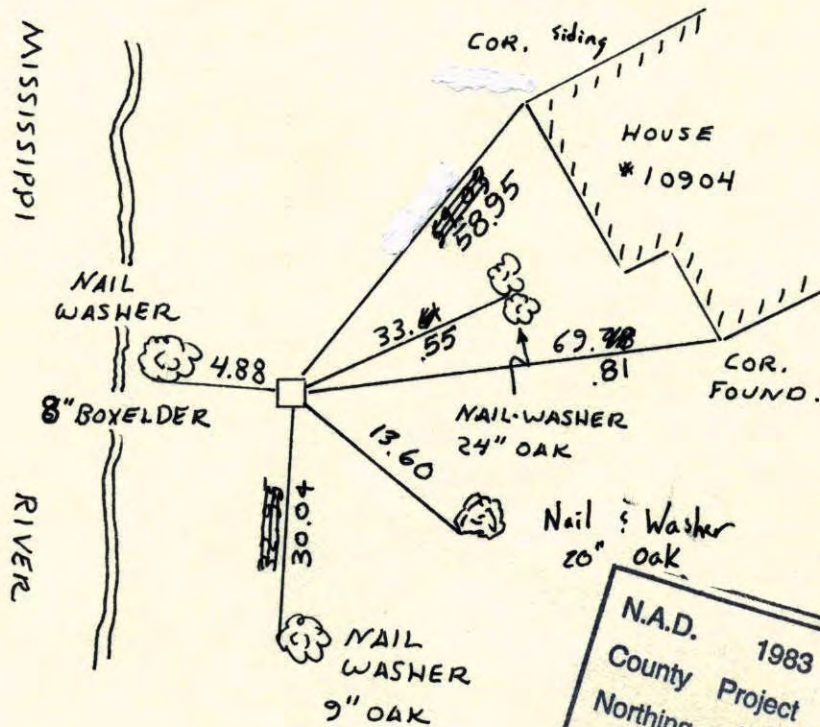
State of Minnesota

MEANDER COR. *13 Corner of Sec. 17 Township 31 Range 24
ON SOUTH LINE

I hereby certify that on the 29 day of JULY, 1960, I found the described corner which was evidenced by CONCRETE MONUMENT

and I further certify that to perpetuate the location of said corner, I did, at the exact location thereof, place a permanent marker consisting of SAME, WITH 1/2" IRON PIPE ON NORTH SIDE.

which reference or witness monuments are located in the manner following:



N.A.D.	1983	Co-ordinates
County Project		Co-ordinates
Northing	148608.2075	
Easting	478398.6037	
State Plane Co-ordinates		
Y		
X		

Revised date	By
6-19-86	D. ROSS
REDRAWN 1-26-88	H. LARSON
8-29-90	M. Zimmerman
8-21-94	
10-22-01	B-C-K

Minnesota State Plane Coordinates
South Zone

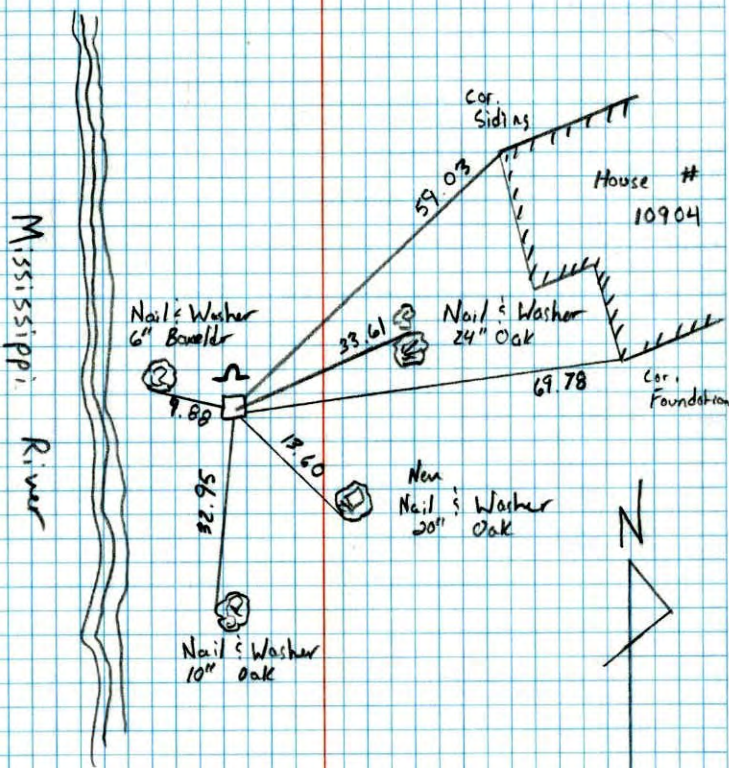
Y _____ X _____

_____,
County Surveyor Date

Registered Land Surveyor No. _____

Meander Corner #15 on South Line Sec. 17 T31 R24

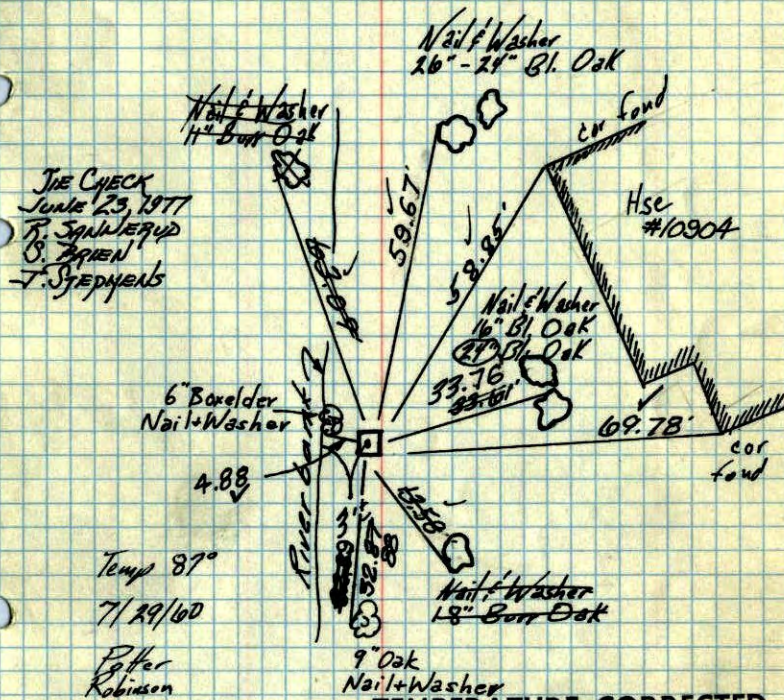
Refined Cast Iron Monument and put in Sign & Post North side



8-29-90
M. Zimmerman
C. Larsen

M.C. #13 on South line Sec 17-T31-R24

Cast Iron Monument
1/2" Iron Pipe on North side.



Temp 87°

7/29/60

P. Potter
Robinson

TEMPERATURE CORRECTED
AND HORIZONTALLY
TAPED MEASUREMENTS

Ties checked
June 4, 1964
M. D. Anderson
R. Carlson

TIE CHECK

7-9-80

B. STEPHENS

P. ROSS

P. HORNBY

Tie Check

July 29, 1970

D. Powell

R. Brien

B. Olson

ROLAND W. ANDERSON
COUNTY SURVEYOR
ANOKA COUNTY, MINNESOTA

Tie Check
July 14, 1966
H. Larson
D. Potter
G. Rejmer
Tie Check
July 12, 1974
R. Farmer

66
M.C. #13 on South line Sec 17-T31-R24

Conc. Mon Up. 4'

1/2" I.P. on No. Side

Old ties check good.

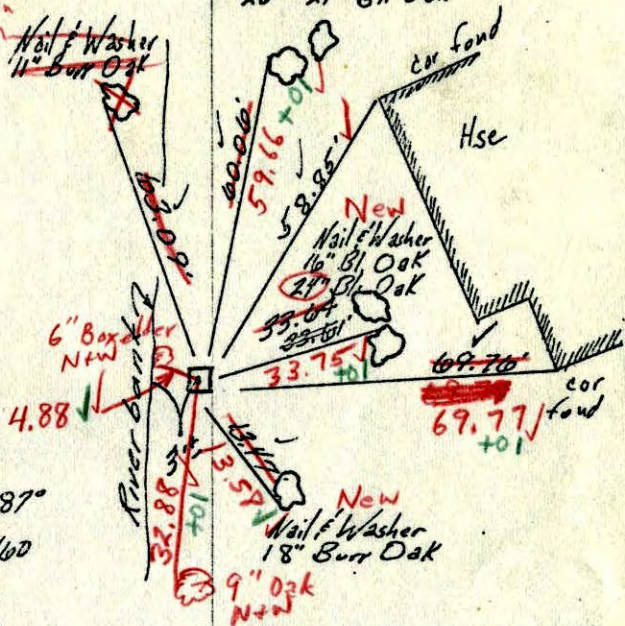
7/29/70

#10-80V

D. Powell

R. Brice

B. Olson



Temp 87°

7/29/60

Potter
Robinson

Ties checked
June 4, 1964
M.D. Anderson
R. Carlson

Tie Check
July 14, 1966
H. Larson
D. Potter
G. Reimer

TEMPERATURE CORRECTED
AND HORIZONTALLY
TAPED MEASUREMENTS

ROLAND W. ANDERSON
COUNTY SURVEYOR
ANOKA COUNTY, MINNESOTA

67
#13 MC, South

North line

17

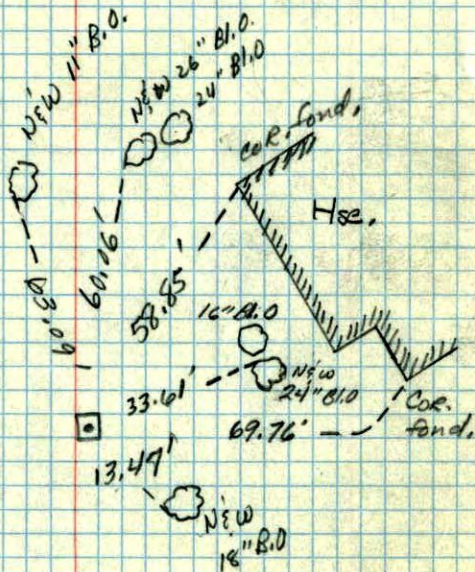
Sec 20 T31, R24

7/29/60

87°

Conc. Mon Up. 4'

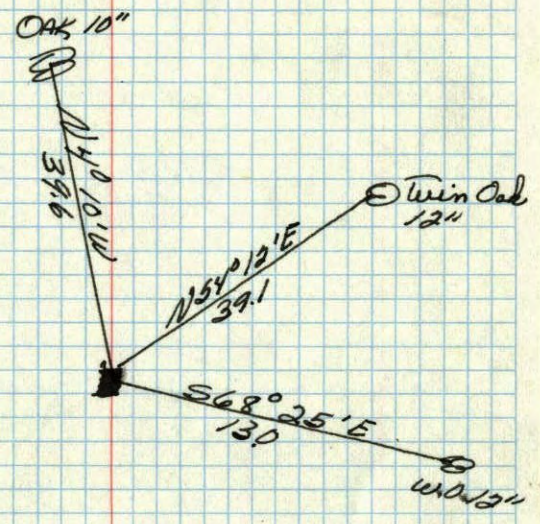
Cor. is on crest of Hill



Potter
Robinson

18/11/60

5
M.C. on N. line of Sec. 20 t. 31. R24
Concrete Monument up .2



Oct. 28, 1944
Cartwright