

# CERTIFICATE OF LOCATION OF GOVERNMENT CORNER

County of Anoka

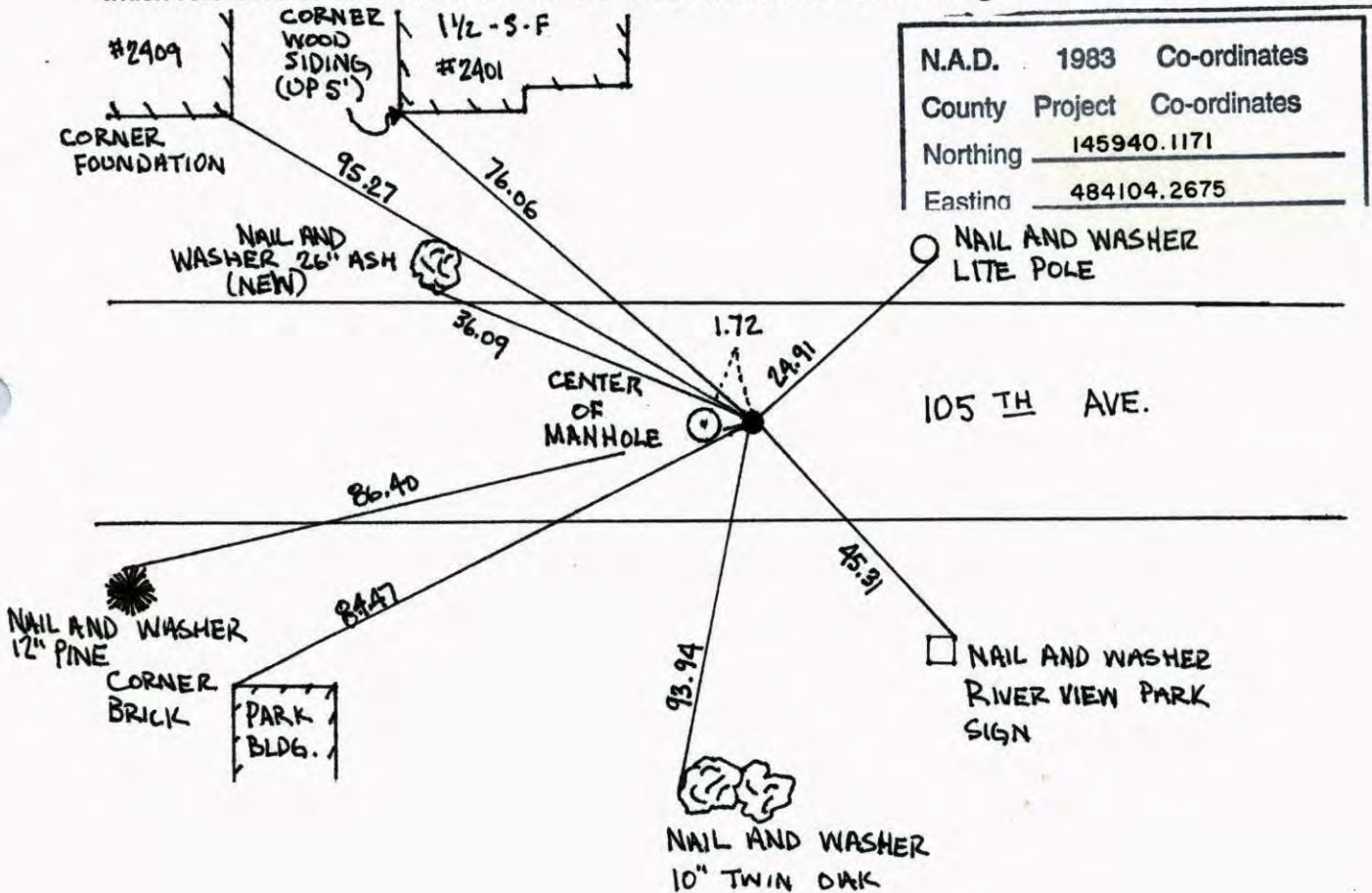
State of Minnesota

WEST 1/4 Corner of Sec. 22 Township 31 Range 24

I hereby certify that on the 8<sup>TH</sup> day of AUGUST, 19 60, I found the described corner which was evidenced by CONCRETE MONUMENT

and I further certify that to perpetuate the location of said corner, I did, at the exact location thereof, place a permanent marker consisting of CAST IRON MONUMENT

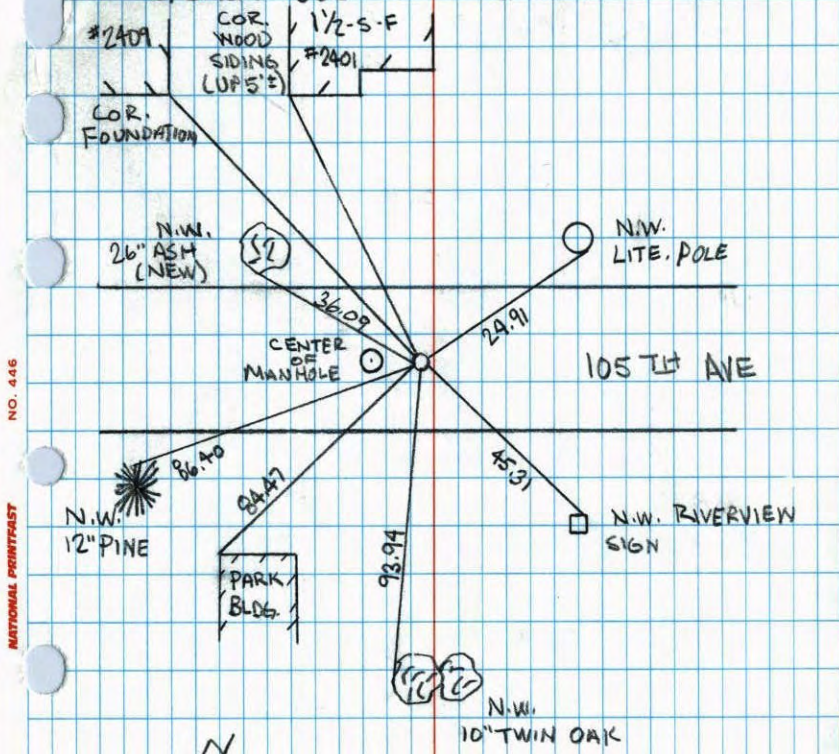
which reference or witness monuments are located in the manner following:



Revised date	Revised date	Revised date
6-17-86		
1-26-88		
8-21-90		
8-16-94		
6-7-00		



WEST 1/4 COR. SEC. 22, T. 31, R. 24

RETIED C.I.M. AFTER IT WAS  
REPLACED DUE TO RECONSTRUCTION

6-7-00

J. SIMMER

B. KLEWZ

T. SCHWAB

NO. 446

NATIONAL PRINTFAST

WEST 1/4 COR. SEC 22 T 31 R 24

RETIED &amp; REMOVED FOR CONST

3-13-00

J. SIMMER

T. SCHWAB



105 TH AVE.

98.78

4.65

NAIL WASHER  
20" OAK

- - - 520.47 - - -

NAIL WASHER  
POWER POLE

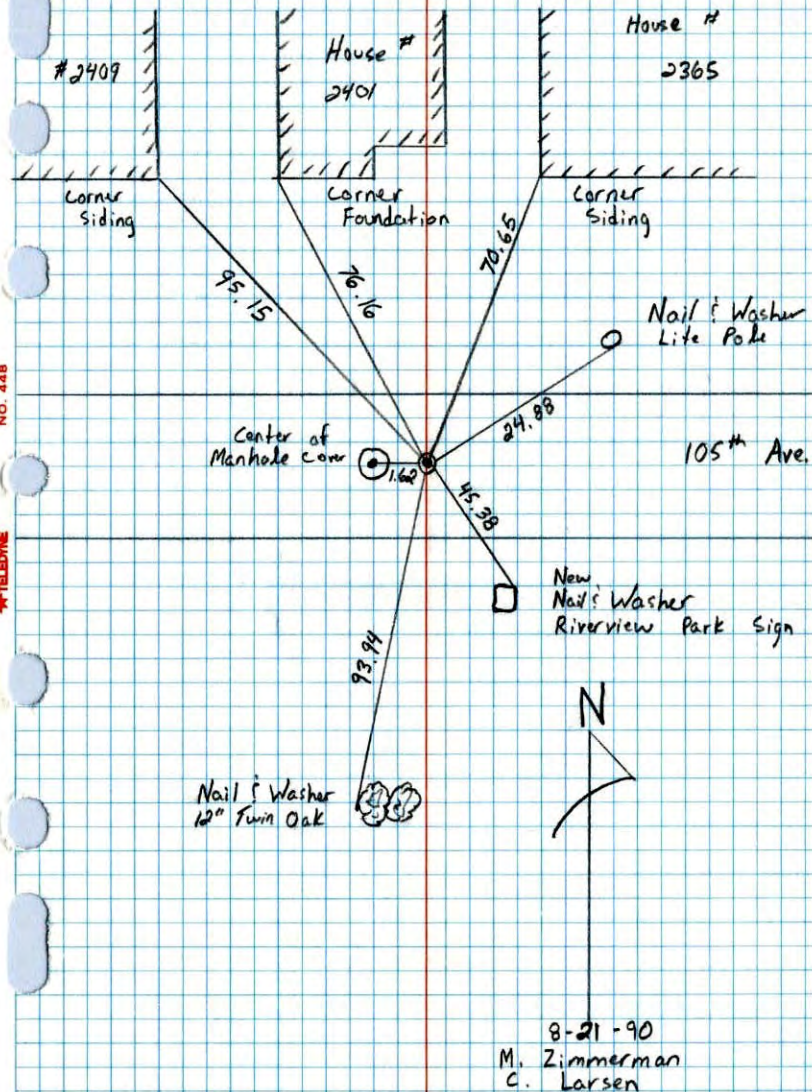
2.22

NO. 446

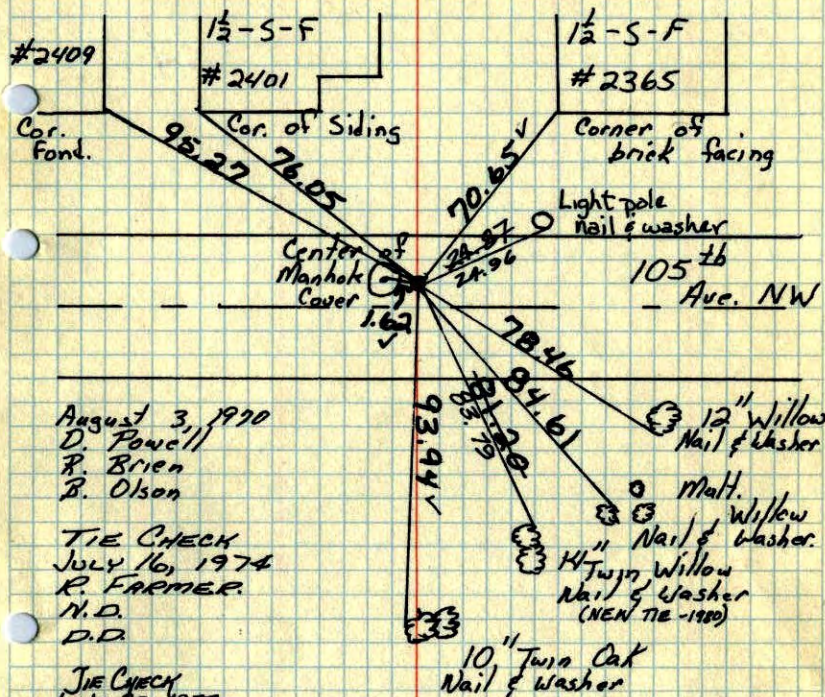
NATIONAL PRINTFAST

West 1/4 Corner Sec. 22 T31 R24

Retired Cast Iron Monument



W 1/4 Cor. Sec. 22-T31-R24

Set broken off cast iron monument  
flush, from ties. 4 1/2 North of E

August 3, 1970  
D. Pencil  
R. Brien  
B. Olson

TIE CHECK  
JULY 16, 1974  
R. FARMER  
N.D.  
D.D.

TIE CHECK  
JUNE 23, 1977  
R. SANNEFUD  
S. BRIEN  
J. STEPHENS

TIE CHECK  
7-3-80  
B. STEPHENS  
P. ROSS  
P. HORNEY

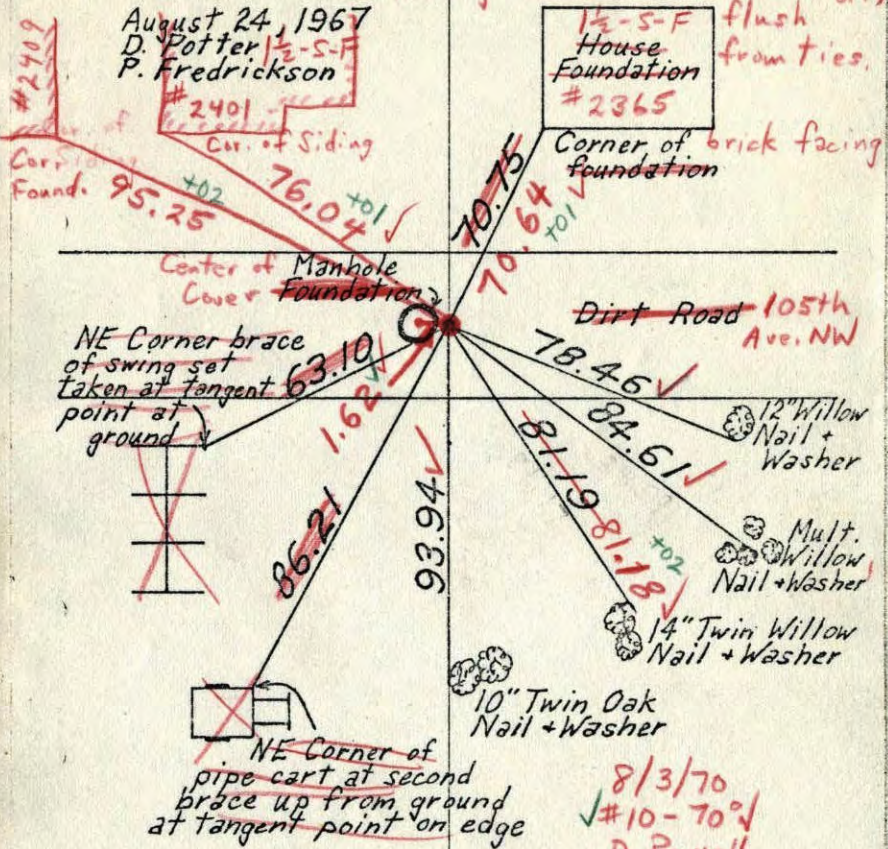
ROLAND W. ANDERSON  
COUNTY SURVEYOR  
ANOKA COUNTY, MINNESOTA

TEMPERATURE CORRECTED  
AND HORIZONTALLY  
TAPED MEASUREMENTS

W 1/4 Cor. Sec. 22-T31-R24

Iron Pipe gone. Set spike from two remaining ties. 4'± North of E. Spike gone. Reset C.I. Man (brg off)

August 24, 1967  
D. Potter  
P. Fredrickson



TEMPERATURE CORRECTED AND HORIZONTALLY TAPED MEASUREMENTS

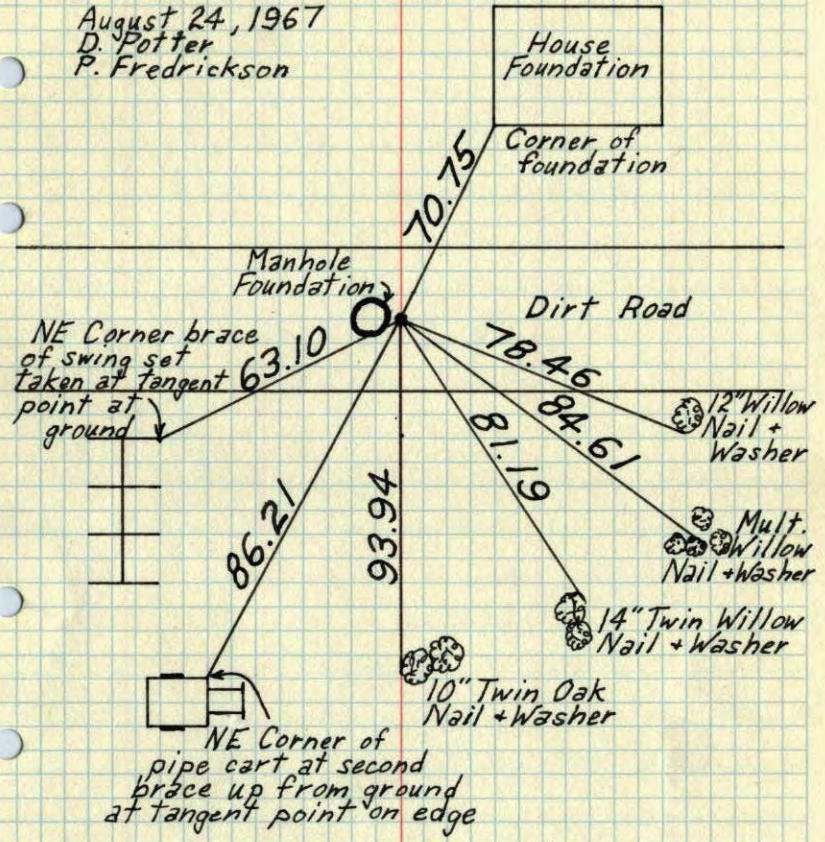
ROLAND W. ANDERSON  
COUNTY SURVEYOR  
ANOKA COUNTY, MINNESOTA

8/3/70  
#10-70  
D. Powell  
R. Brien  
B. Olson

W 1/4 Cor. Sec. 22-T31-R24

Iron Pipe gone. Set spike from two remaining ties

August 24, 1967  
D. Potter  
P. Fredrickson



TEMPERATURE CORRECTED AND HORIZONTALLY TAPED MEASUREMENTS

ROLAND W. ANDERSON  
COUNTY SURVEYOR  
ANOKA COUNTY, MINNESOTA

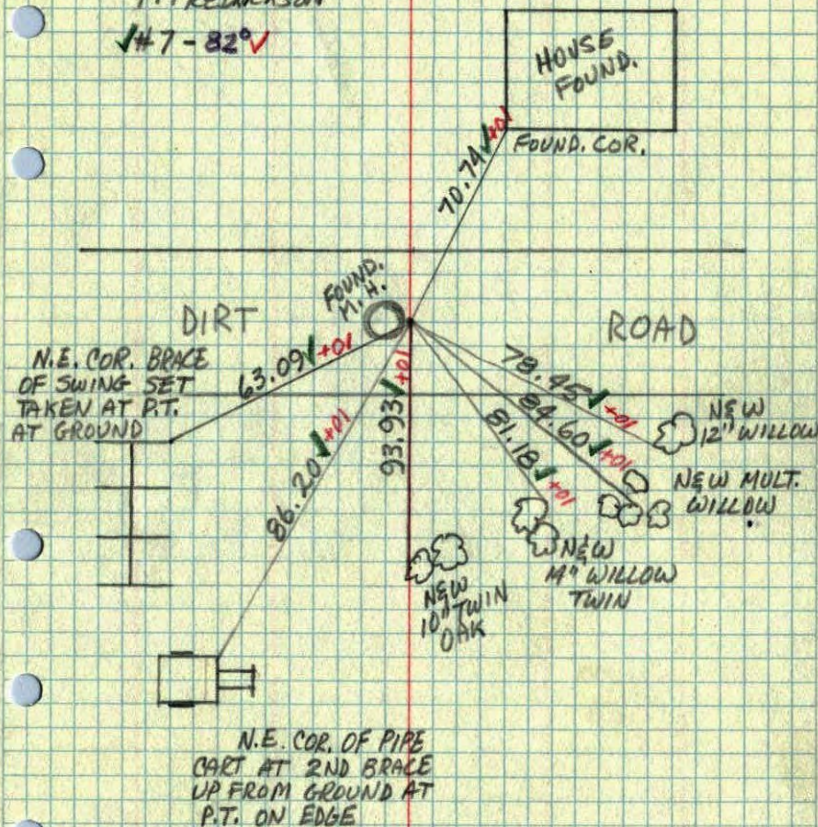
W $\frac{1}{4}$  COR. SEC. 22, T31, R24

IRON PIPE GONE SET SPIKE  
FROM 2 REMAINING TIES

8/2A/67

D. POTTER  
P. FREDRICKSON

#47-82°V

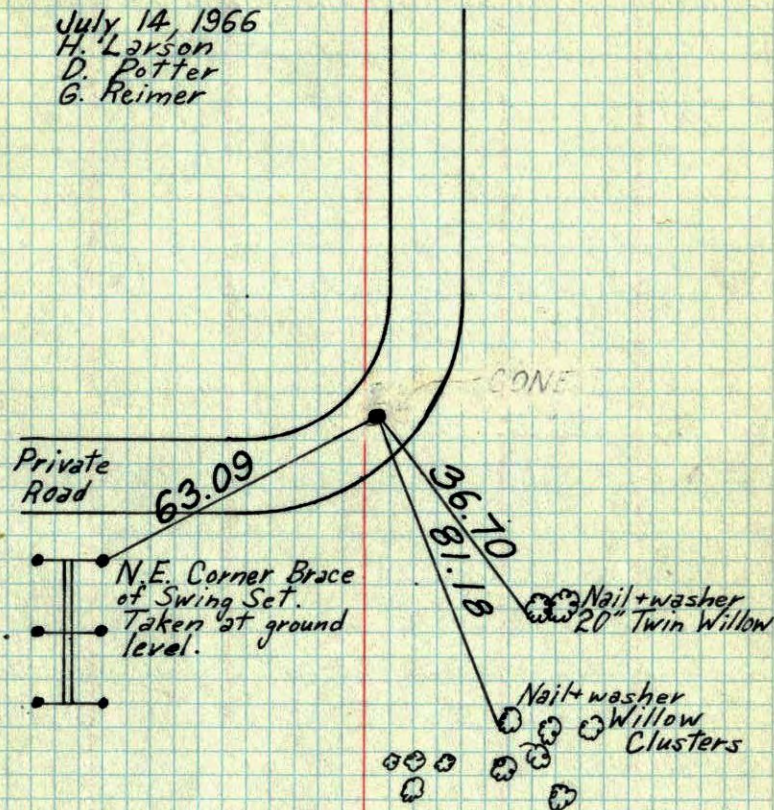


W $\frac{1}{4}$  Cor. Sec. 22-T31-R24

Concrete Monument gone.  $\frac{1}{2}$ " iron pipe  
in place Two remaining  
ties checkout ok. Took new tie.

July 14, 1966

H. Larson  
D. Potter  
G. Reimer



TEMPERATURE CORRECTED  
AND HORIZONTALLY  
TAPED MEASUREMENTS

ROLAND W. ANDERSON  
COUNTY SURVEYOR  
ANOKA COUNTY, MINNESOTA

~~X~~ Done

67

W 1/4 Cor. Sec 22-T31-R24

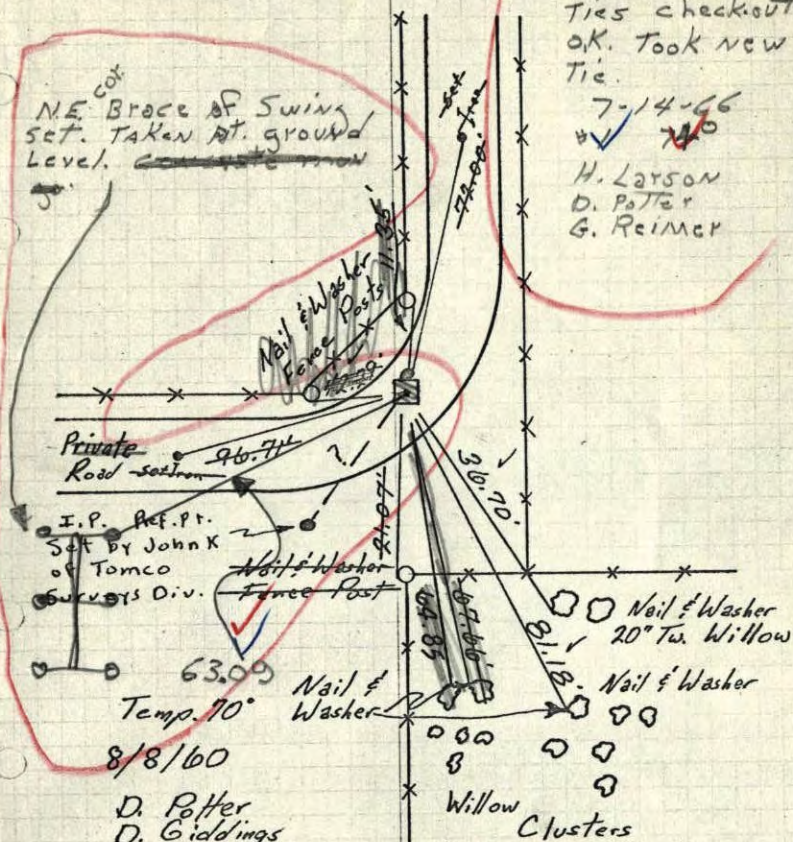
Cone. Max.  
down 1.0'  
Iron on North Side

CON. MOD.  
gone 1/2" IRON  
PIPE IN ITS  
PLACE 2 REMAINING  
TIES CHECKOUT  
OK. Took new  
Tie.

7-14-66

H. Larson  
D. Potter  
G. Reimer

NE<sup>Cor</sup> Brace of Swing  
Set. TAKEN AT GROUND  
Level. ~~CON. MOD.~~



63.09  
Temp. 70°  
8/8/60

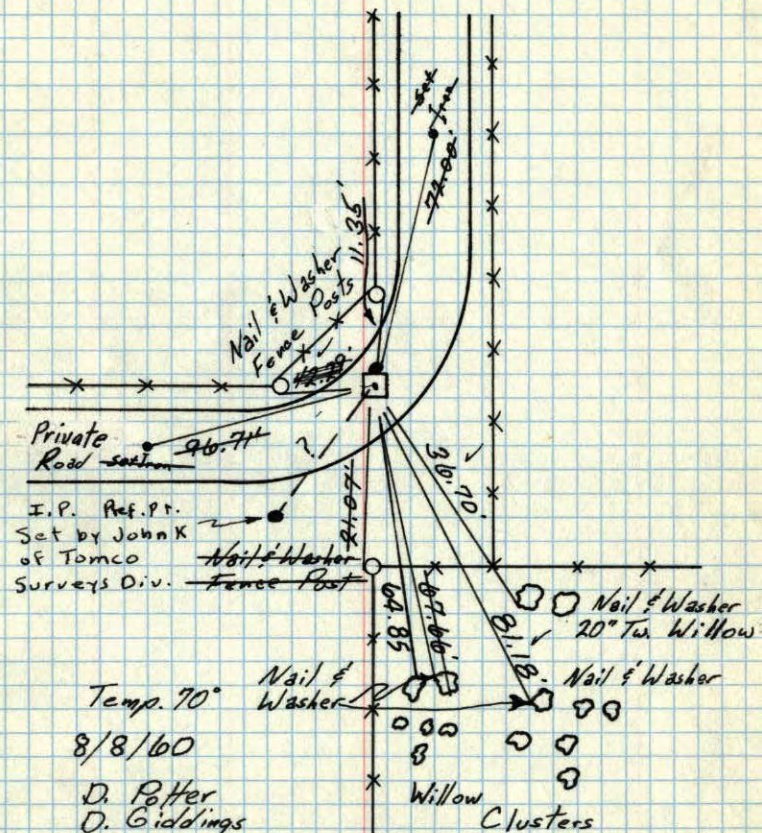
D. Potter  
D. Giddings  
Retie 6/4/64  
M. D. Anderson  
R. Carlson

TEMPERATURE CORRECTED  
AND HORIZONTALLY  
TAPED MEASUREMENTS  
ROLAND W. ANDERSON  
COUNTY SURVEYOR  
ANOKA COUNTY, MINNESOTA

67

W 1/4 Cor. Sec 22-T31-R24

Cone. Max.  
down 1.0'  
Iron on North Side



63.09  
Temp. 70°  
8/8/60

D. Potter  
D. Giddings  
Retie 6/4/64  
M. D. Anderson  
R. Carlson

TEMPERATURE CORRECTED  
AND HORIZONTALLY  
TAPED MEASUREMENTS  
ROLAND W. ANDERSON  
COUNTY SURVEYOR  
ANOKA COUNTY, MINNESOTA

49914.5  
W $\frac{1}{4}$  Corn. Sec. 22, T. 31, R. 24

Coon Rapids

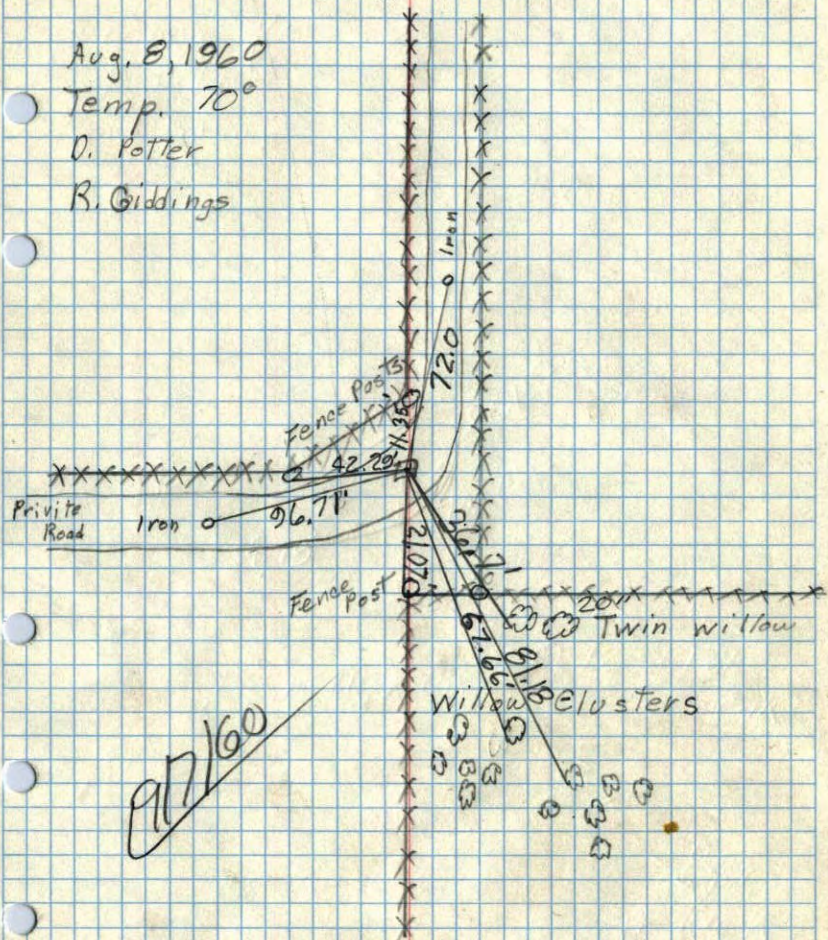
Con. Mon. (Iron North Side)  
Down 1.0'

Aug. 8, 1960

Temp. 70°

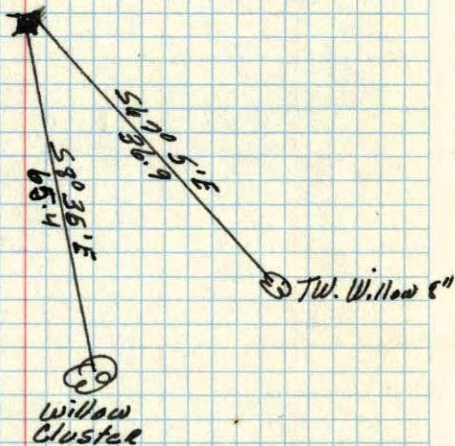
O. Potter

R. Giddings



W $\frac{1}{4}$  corner of Sec. 22 + 31, R24

Concrete Monument down .3



Nov. 24, 1944  
Coetweight