

CERTIFICATE OF LOCATION OF GOVERNMENT CORNER

County of Anoka

State of Minnesota

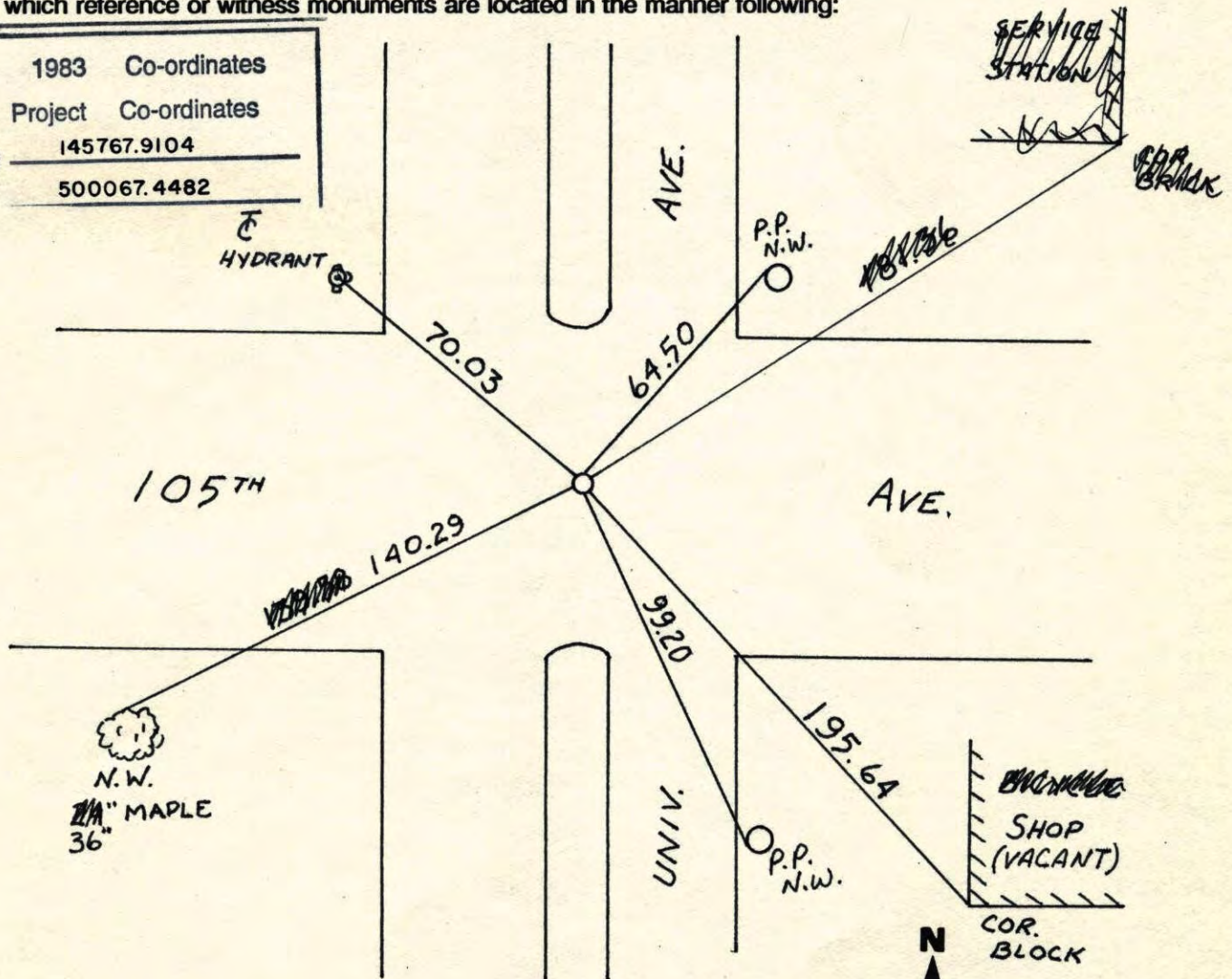
EAST QTR. Corner of Sec. 24 Township 31 Range 24

I hereby certify that on the 26 day of JUNE, 1964, I found the described corner which was evidenced by CONCRETE AND 1" IRON PIPE

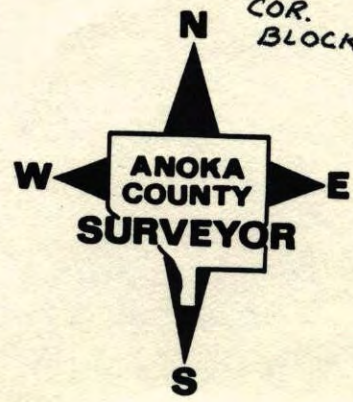
and I further certify that to perpetuate the location of said corner, I did, at the exact location thereof, place a permanent marker consisting of CAST IRON MON.

which reference or witness monuments are located in the manner following:

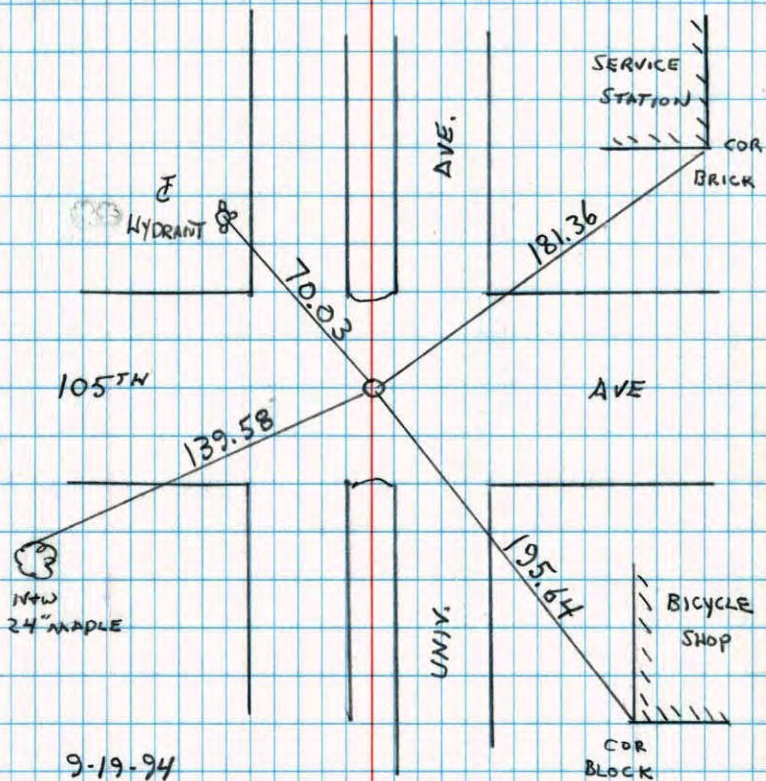
N.A.D.	1983	Co-ordinates
County	Project	Co-ordinates
Northing	145767.9104	
Easting	500067.4482	



Revised date	Revised date	Revised date
2-14-92		
9-19-94		
12-15-98		



E 1/4 CORNER SECTION 24 T31 R24

RESET & RETIED CAST IRON AFTER
CONSTRUCTION

9-19-94
N. LARSON
B. KLEINZ
M. STEWART

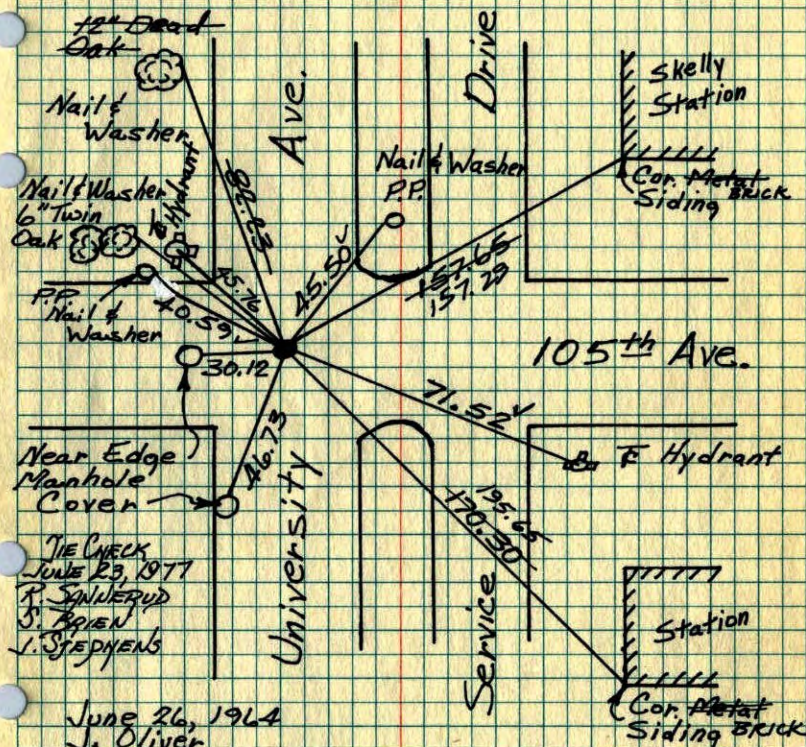
NO. 446

TELEPHONE

E 1/4 Cor. Sec. 24-T31-R24

Found 1" Iron Pipe Down 3" And Concrete
Monument Down 37"

Reset Cast Iron Flush

Set PK Nails At 100.00' N&S On E+W Edges
Of University Avenue

TIE CHECK
JUNE 23, 1977
R. SANDERUD
S. APREN
I. STEPHENS

June 26, 1964

J. Oliver

R. Carlson

N. Livgard

J. Dunlop

7-8-80
B. STEPHENS
P. ROSS
P. HORNBY

Tie Check

July 16, 1974

R. Fairmer

N. Dahl

D. Dahl

ROLAND W. ANDERSON
COUNTY SURVEYOR
ANOKA COUNTY, MINNESOTA

TEMPERATURE CORRECTED
AND HORIZONTALLY
TAPED MEASUREMENTS

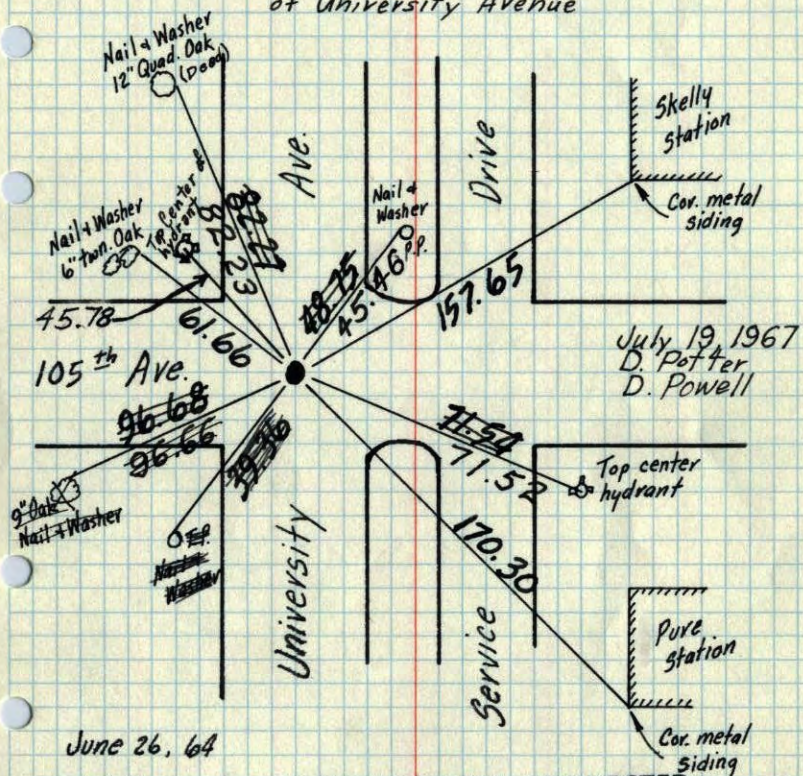
E 1/4 Cor. Sec. 24 T31 R 24

Found 1" Iron pipe down 3" and Conc. Mon. down 37"

ReSet Cast Iron flush

Set PK Nails at 100.00 N+S on E+W edges

of University Avenue



June 26, 64

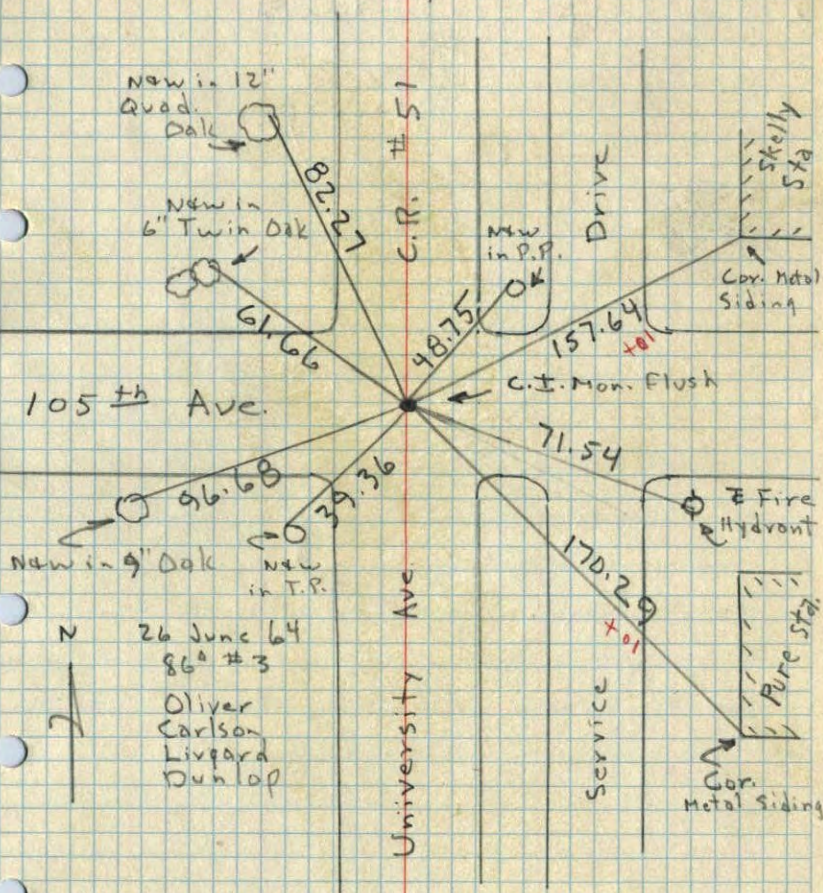
J. Oliver
R. Carlson
N. Livgard
J. DunlopTie Check
July 11, 1966
H. Larson
D. PotterTEMPERATURE CORRECTED
AND HORIZONTALLY
TAPED MEASUREMENTSROLAND W. ANDERSON
COUNTY SURVEYOR
ANOKA COUNTY, MINNESOTA

E 1/4 Cor. Sec. 24, T31, R 24

Found 1" I.P. down 3" and Conc. Mon.

down 37". Set Cast Iron Monument

Flush with PK Spks 2.00' N+S and E.

N 26 June 64
86° #3
Oliver
Carlson
Livgard
Dunlop

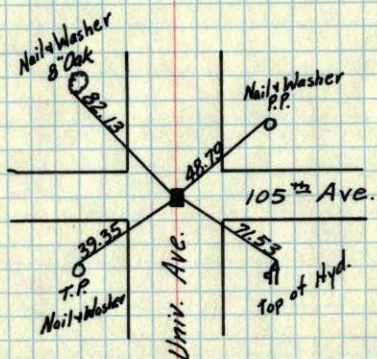
70
E 1/4 Corner Sec. 24 T31R24

Found Con. Mon. down 3'

Found Iron Pipe Centered over Mon. down 2"

placed Cast Iron Monument over

Concrete Monument



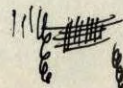
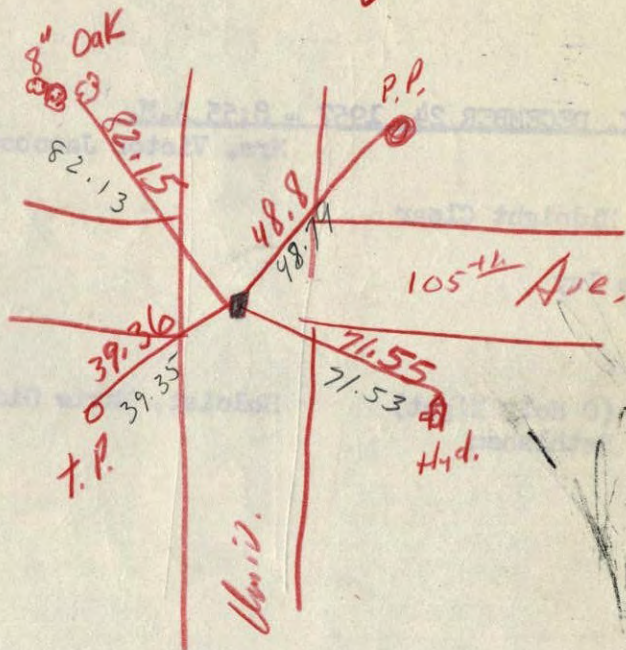
TEMPERATURE CORRECTED
AND HORIZONTALLY
TAPED MEASUREMENTS

ROLAND W. ANDERSON
COUNTY SURVEYOR
ANOKA COUNTY, MINNESOTA

E 1/4 Cor. of Sec. 24 T31R24

Con. Mon. down 3'

Iron Pipe Centered down 2"



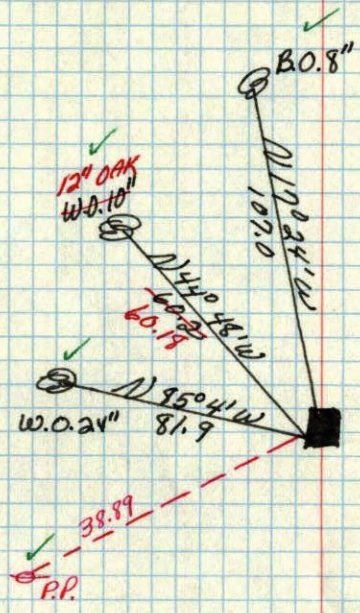
temp. 24°

Milage 40521
40503

E 1/4 corner of Sec. 24 T. 31 R. 24
Concrete Monument

Retied By
Harold W. Ike
Sept. 1954

Mindee Eng. Co.
July 1955



June 1, 1945
Cartwright