

CERTIFICATE OF LOCATION OF GOVERNMENT CORNER

County of Anoka

State of Minnesota

NORTHEAST Corner of Sec. 25 Township 31 Range 24

I hereby certify that on the 6 day of JULY, 1960, I found the described corner which was evidenced by CONC. MON.

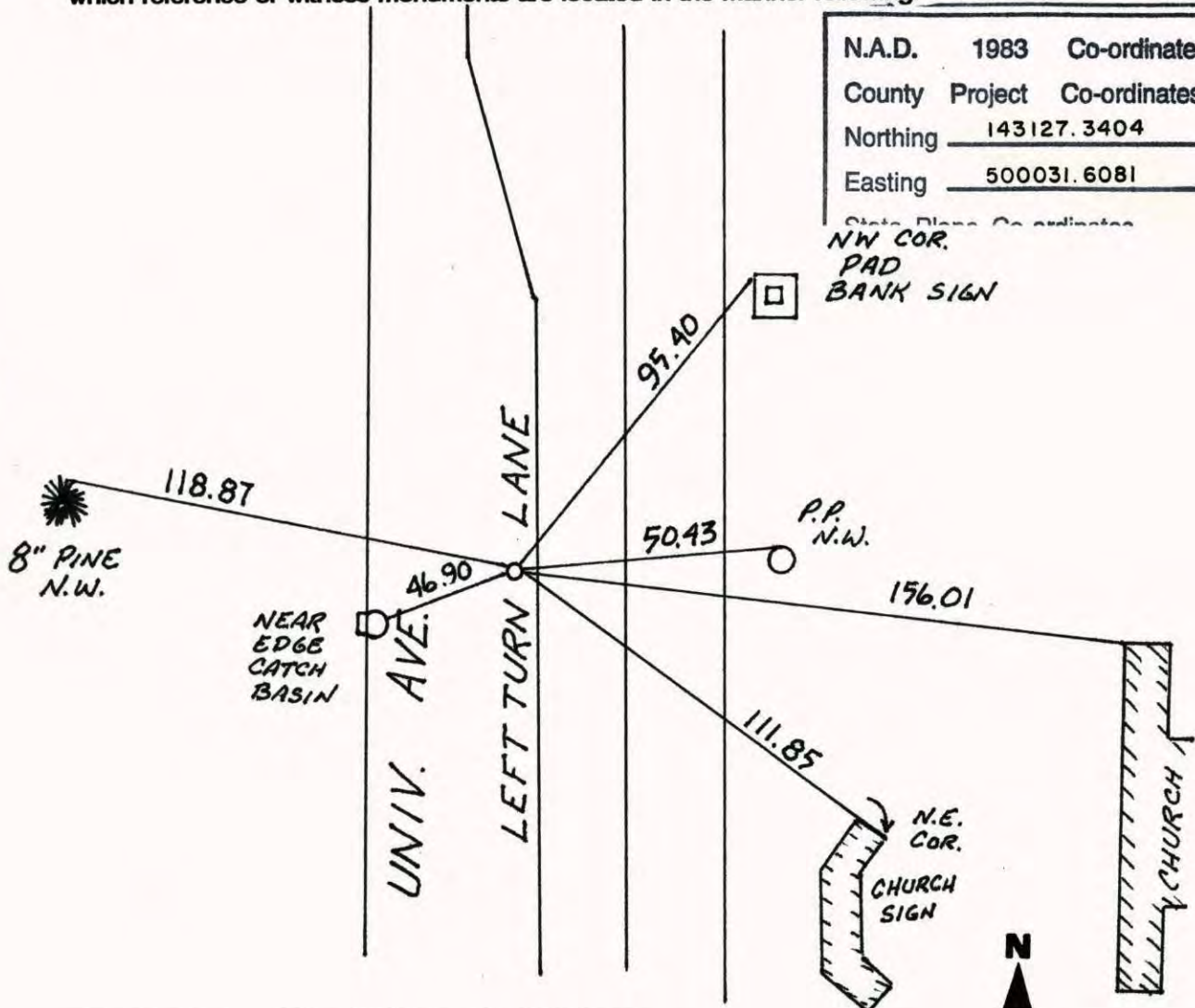
and I further certify that to perpetuate the location of said corner, I did, at the exact location thereof, place a permanent marker consisting of CAST IRON MON.

which reference or witness monuments are located in the manner following:

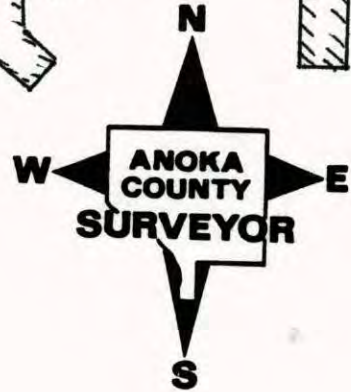
N.A.D.	1983	Co-ordinates
County	Project	Co-ordinates
Northing	143127.3404	
Easting	500031.6081	

State Plane Co-ordinates

NW COR.
PAD
BANK SIGN



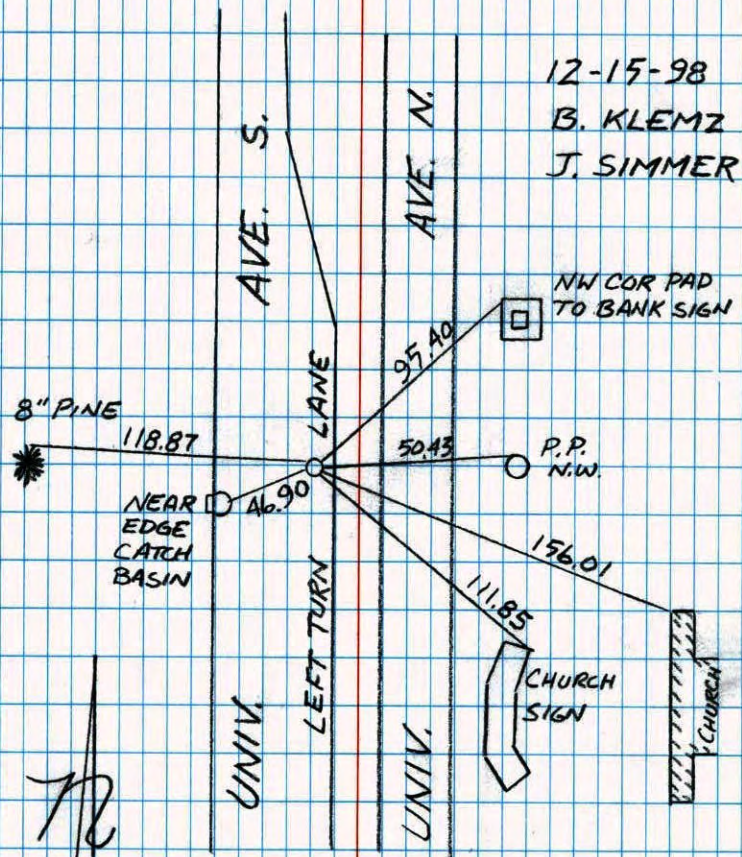
Revised date	Revised date	Revised date
9-19-94		
12-17-98		



NORTHEAST COR SEC. 25 T 31 R 24
 RETIED CAST IRON MON.

NO. 446

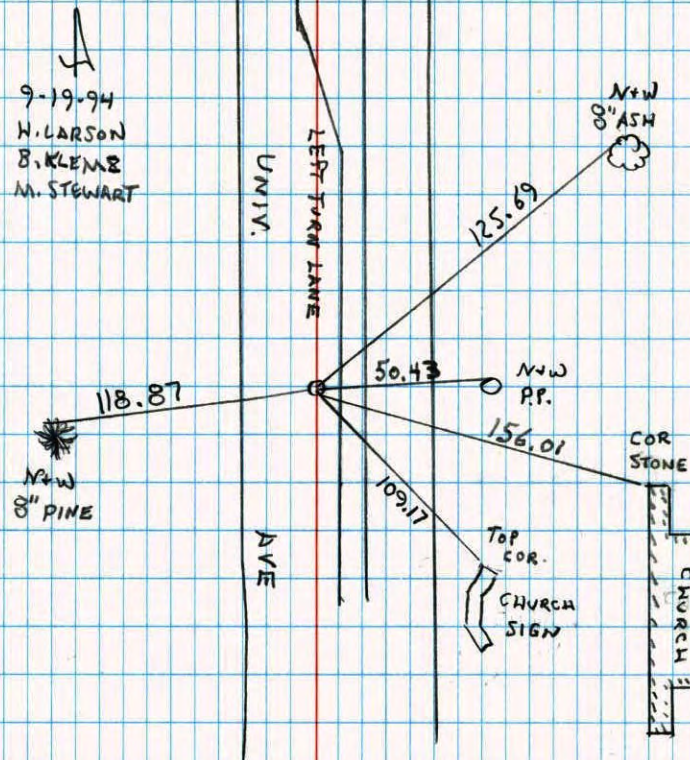
NATIONAL FOREST



NE CORNER SECTION 25 T 31 R 24
 RESET + RETIED CAST IRON AFTER
 CONSTRUCTION

NO. 446

NATIONAL FOREST



N.E. COR. SEC. 25 T. 31 R. 24

78

SET CAST IRON FLUSH 8-28-68

7/6/60
D. POTTER
R. ROBINSON

TIE CHECK
7-15-74
R. FARMER

NE COR. OF BRICK



PP NAIL WASHER

TIE CHECK
JUNE 23, 1977
R. SANNEBERG
S. BRIEN
J. SJEDKENS

AVE. EXTEN.

UNIVERSITY

76.80

SW COR. BLAINE
STATE BANK SIGN
(BASE)

NAIL WASHER
TR 27.09

53.94

PP NAIL WASHER

126.58

33.36

HYD. F.

1-5-F.
* 10054

76.62

13" OAR
NAIL WASHER

53.29

109.25

"KING OF GLORY
WAY OF THE
CROSS LUTHERAN
CHURCH"
BOARD AND
COR. OF SIGN
BASE SET IN
FIELD STONE

TIE CHECK
7-9-80
B. STEPHENS
P. ROSS
P. HORNBY

TEMPERATURE CORRECTED
AND HORIZONTALLY
TAPED MEASUREMENTS

ROLAND W. ANDERSON
COUNTY SURVEYOR
ANOAKA COUNTY, MINNESOTA

CERTIFICATE OF LOCATION OF GOVERNMENT CORNER

NORTHEAST Corner of Section 25, Township 31N, Range 24W, 4th P.M.

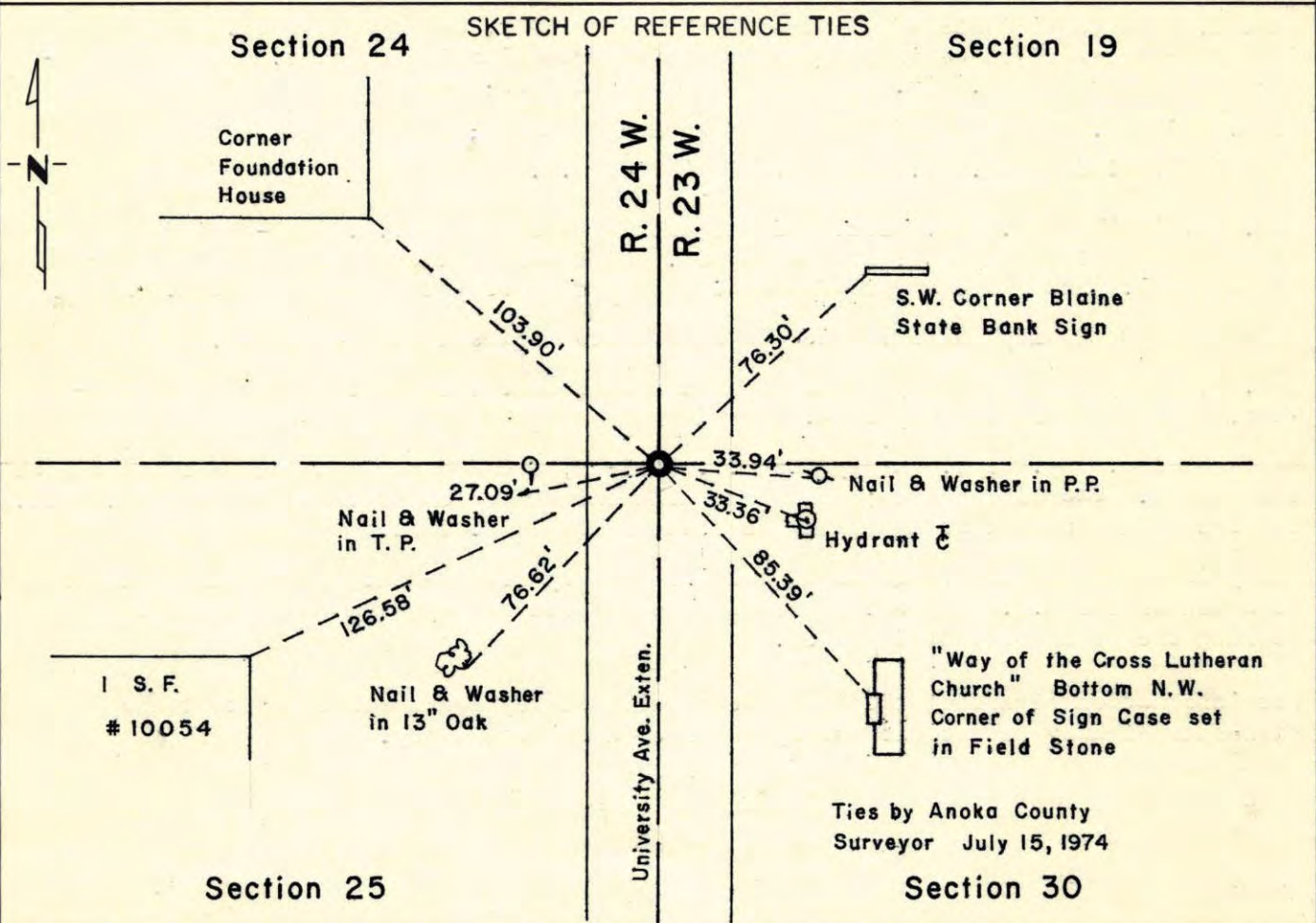
STATE OF MINNESOTA, County of Anoka

At the corner location shown on the sketch:

On 1974 found a Cast Iron Monument
DATE

left monument as found, lowered monument, removed monument (explain)

On _____ placed a _____
DATE



Statement of evidence relative to this corner location is on back of page.

I hereby certify that this document and the data contained herein was prepared by me or under my direct supervision.

John E. Suenen 9-5-75
SIGNATURE DATE

Registration No. 10460

Land Surveyor, Professional Engineer

County Surveyor, County Engineer

OFFICE OF THE REGISTER OF DEEDS

County of _____

I hereby certify that this document was filed in the Reg. of Deeds office at _____ M. on the _____ day of _____ A.D., 19 _____

Register of Deeds _____

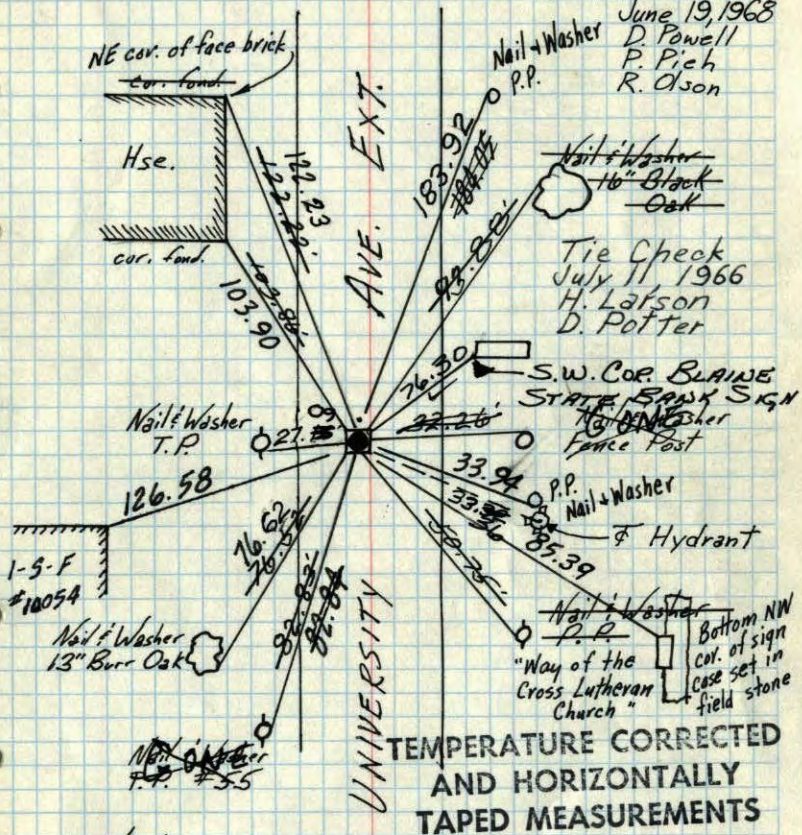
By _____, Deputy

DOCUMENT NO. _____

NE Cor. of Sec 25-T31-R24

Conc. Mon. R.R. spike to North
down 1.5' I.P. on top flush with road
Set Cast Iron Monument flush.
Aug. 28, 1968

Additional tie
taken for const.
June 19, 1968
D. Powell
P. Pich
R. Olson



7/6/60

Dennis Potter
Ralph Robinson

Retie 6/26/64
J. Oliver
R. Carlson
N. Livgard
J. Dunlop

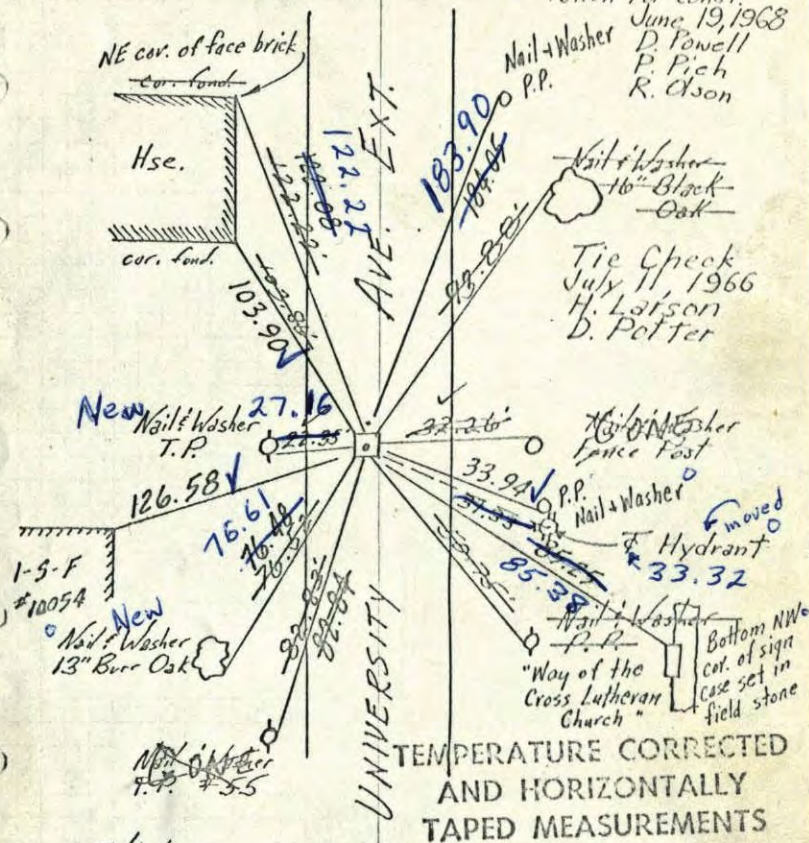
ROLAND W. ANDERSON
COUNTY SURVEYOR
ANOKA COUNTY, MINNESOTA

TIE CHECK
JULY 15, 1974
R. FARMER

NE Cor. of Sec 25-T31-R24

Conc. Mon. R.R. spike to North
down 1.5' I.P. on top flush with road

Set C.I. Mon. flush. Additional tie
taken for const.
June 19, 1968
D. Powell
P. Pich
R. Olson



7/6/60

Dennis Potter
Ralph Robinson

Retie 6/26/64
J. Oliver
R. Carlson
N. Livgard
J. Dunlop

ROLAND W. ANDERSON
COUNTY SURVEYOR
ANOKA COUNTY, MINNESOTA

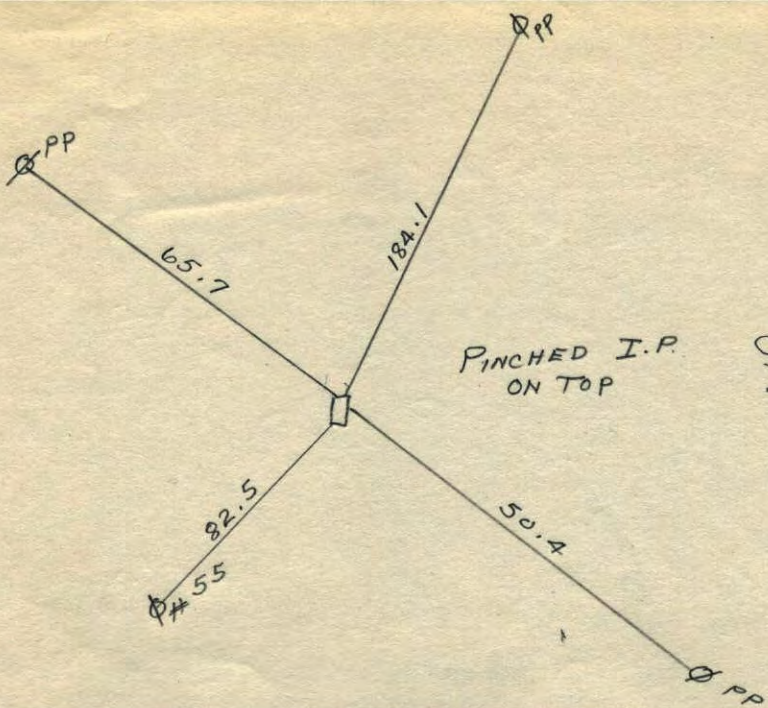
8/28/68
#6-70°

D.P.
R.O.
P.P.

24

25

NE COR.
SEC. 25
31-24
CONG. MON.

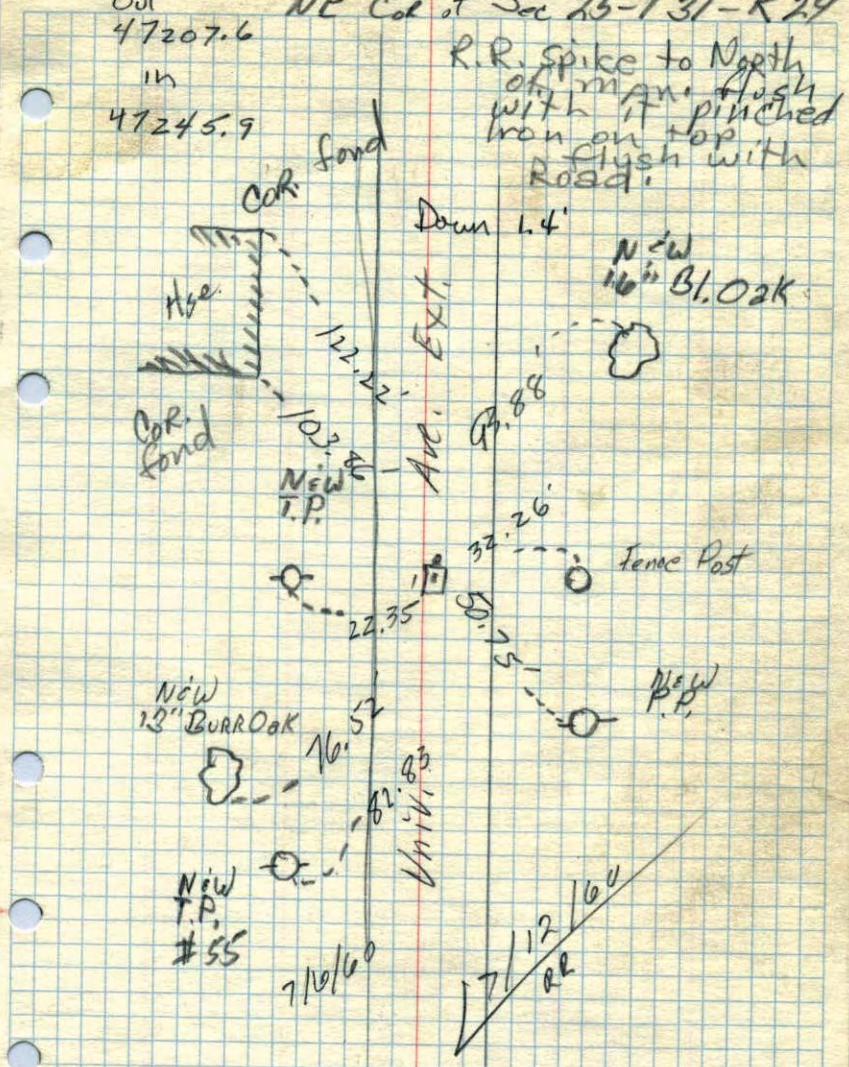


Suburban Eng.

Out 47207.6 NE Cor of Sec 25-T31-R24

In 47245.9

R.R. Spike to North
of man. flush
with it pinched
iron on top
flush with
Road.



New 13" Burr Oak

New T.P. #55

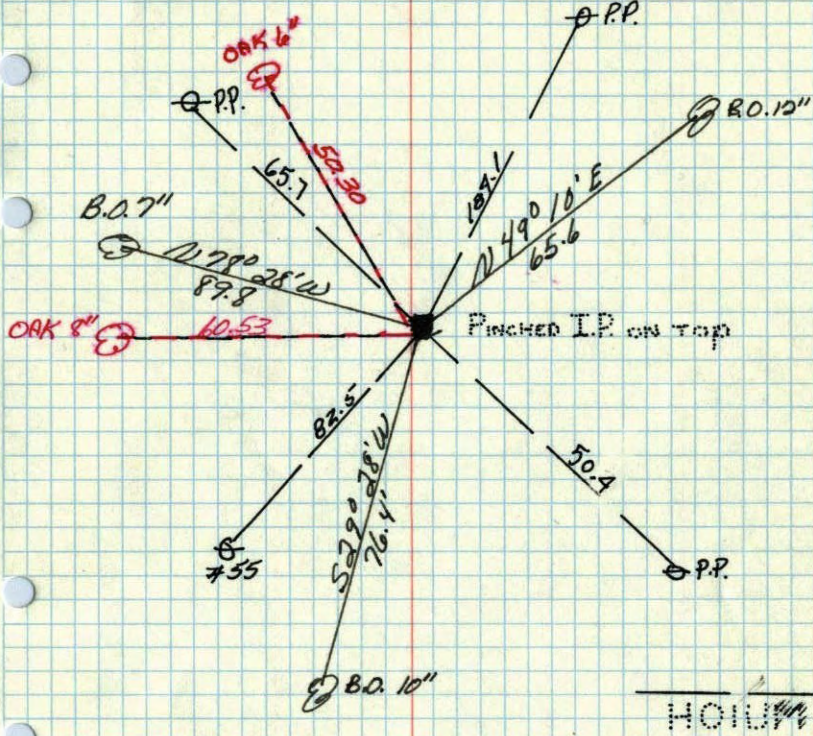
17/12/60 RR

NE corner of Sec. 25 T. 31. R. 24

Concrete Monument down 4

Ties O.K.
M. J. Egan, Esq.
July 1955

Retied By
Harold Wilke
Sept 1954



June 1, 1945
C. A. Wright