

CERTIFICATE OF LOCATION OF GOVERNMENT CORNER

County of Anoka

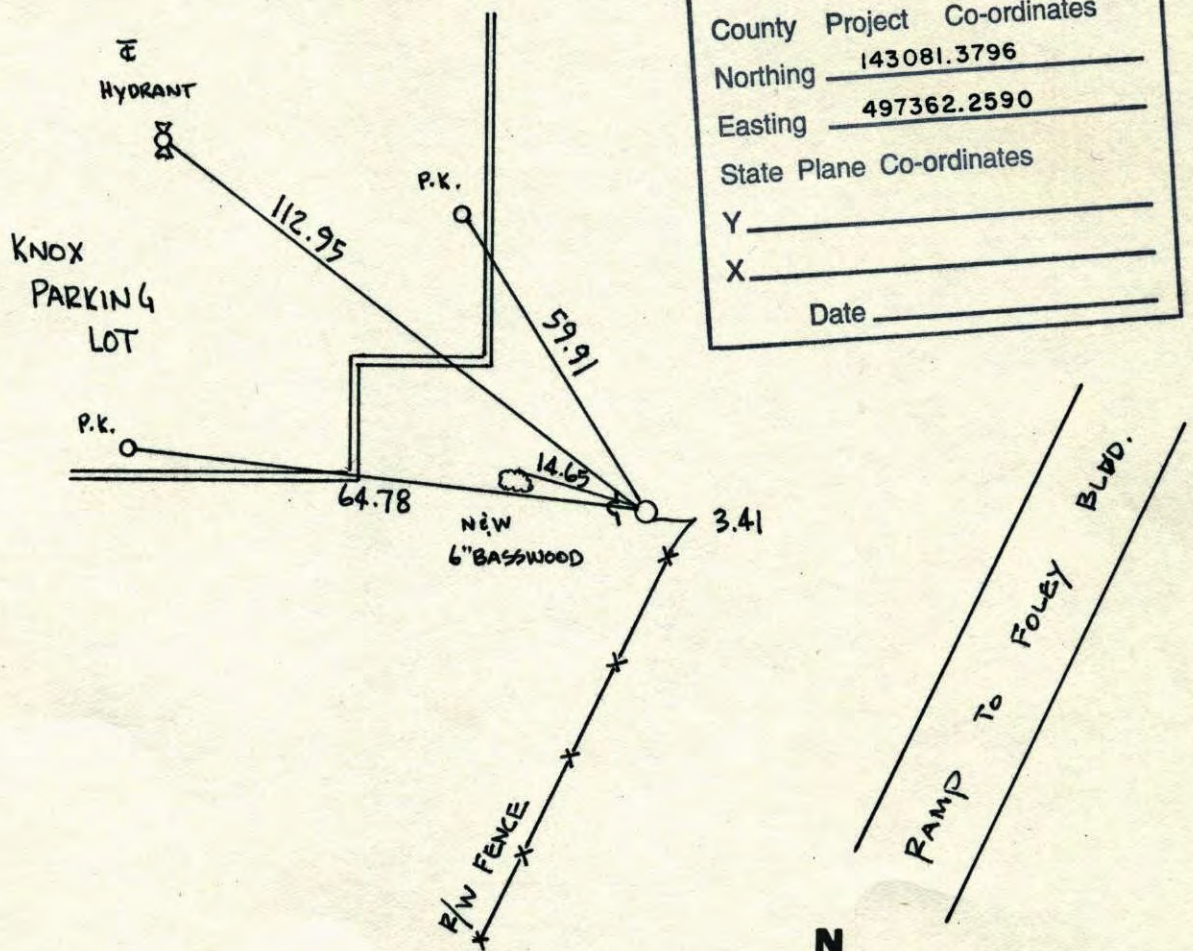
State of Minnesota

NORTH QTR. Corner of Sec. 25 Township 31 Range 24

I hereby certify that on the 1ST day of JUNE, 19 62 I found the described corner which was evidenced by 3/4" I.P.

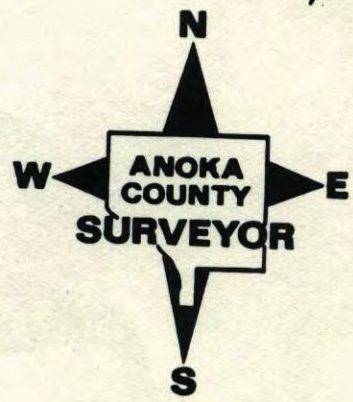
and I further certify that to perpetuate the location of said corner, I did, at the exact location thereof, place a permanent marker consisting of CAST IRON MONUMENT
SIGN & POST ON WEST SIDE

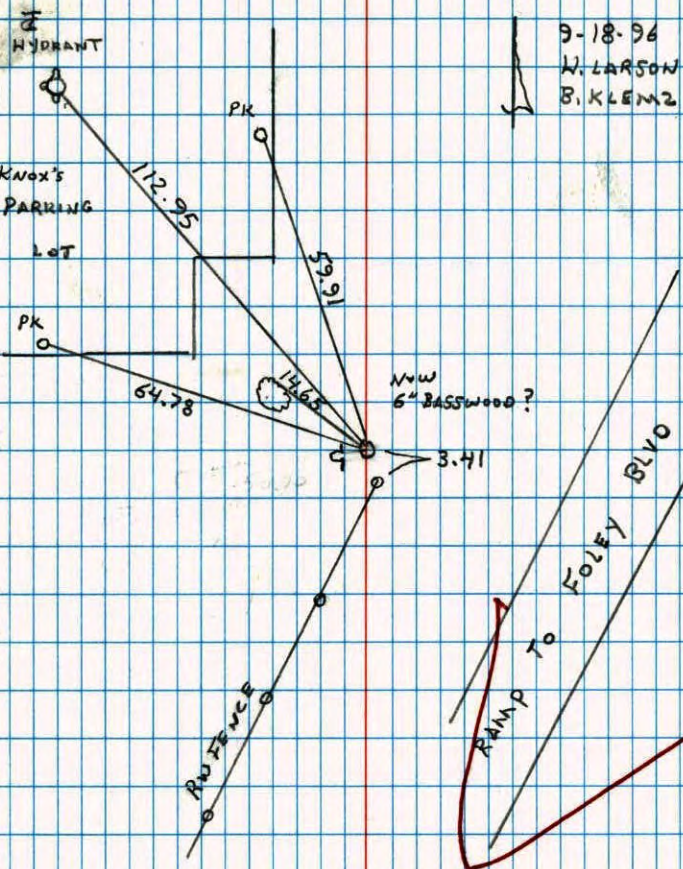
which reference or witness monuments are located in the manner following:



N.A.D.	1983	Co-ordinates
County	Project	Co-ordinates
Northing		<u>143081.3796</u>
Easting		<u>497362.2590</u>
State Plane Co-ordinates		
Y		_____
X		_____
Date _____		

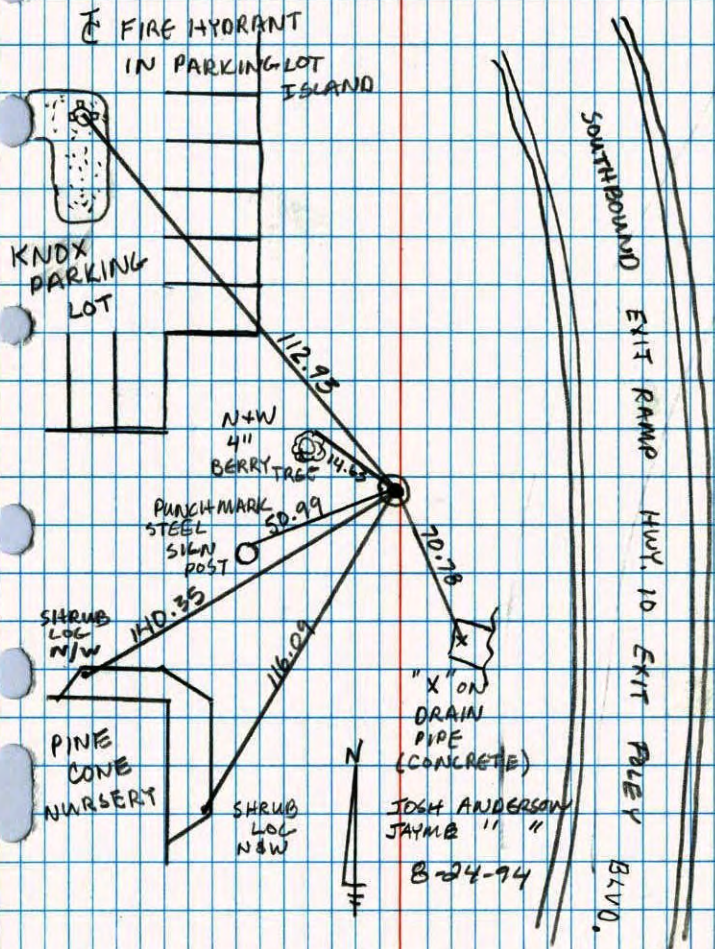
Revised date	Revised date	Revised date
<u>7-8-80</u>		
<u>6-13-86</u>		
<u>4-26-91</u>		
<u>8-24-94</u>		
<u>4-11-97</u>		



N¹/₄ COR SECTION 25 T31 R24RETIED, AND REMOVED FOR CONSTRUCTION
SIGN + POST ON WEST SIDERESET 1/2 IP WITH
SIGN + POST ON WEST
SIDEREPLACED IP WITH C.I.
4-11-97 LLARSON
B.K.
M.S.9-18-96
W. LARSON
B. KLEMZ

NORTH 1/4 Sec. 25 Tw. 31 R. 24

RETIÉ CAST IRON MONUMENT

"X" ON
DRAIN
PIPE
(CONCRETE)JOSH ANDERSON
JAYME " "
B-24-94

SOUTHBOUND EXIT RAMP HWY. 10 EXIT PALEY BLVD.

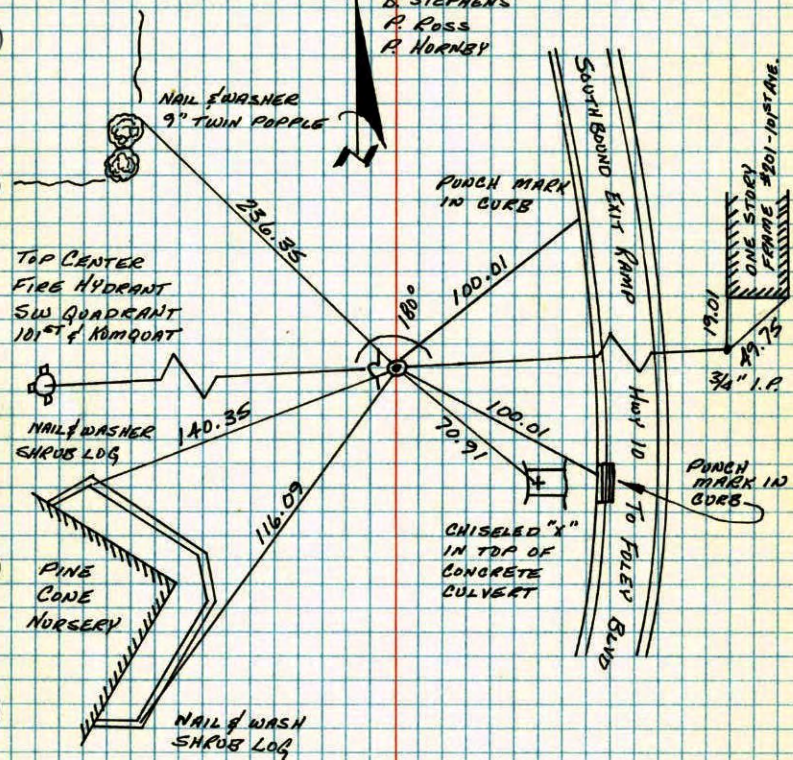
N¹/₄ CORNER SECTION 25-T31-R24

CAST IRON MONUMENT FLUSH. STEEL FENCE POST ON WEST NORTHERN SIDE. 18 NOV 65

J. OLIVER
M. A. ANDERSON

ALL BUT ONE TIE MISSING. SET NEW TIES TO CAST IRON MONUMENT AND OLD TIE. 8 JUL 80

B. STEPHENS
P. ROSS
P. HORNBY



TEMPERATURE CORRECTED
AND HORIZONTALLY
TAPED MEASUREMENTS

ROLAND W. ANDERSON
COUNTY SURVEYOR
ANOKA COUNTY, MINNESOTA

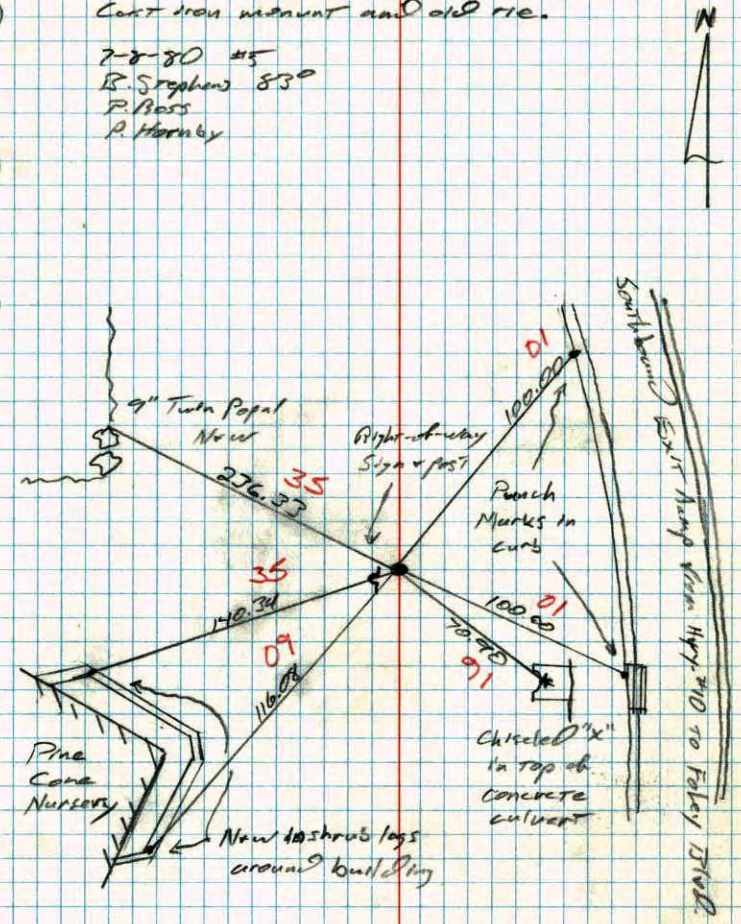
NO. 448

TELEPHONE

N¹/₄ Cor. Sec. 25 T-31 R-24

All but one tie missing. Set new ties to cast iron monument and old tie.

7-8-80 #5
B. Stephens 83°
P. Ross
P. Hornby



NO. 448

TELEPHONE

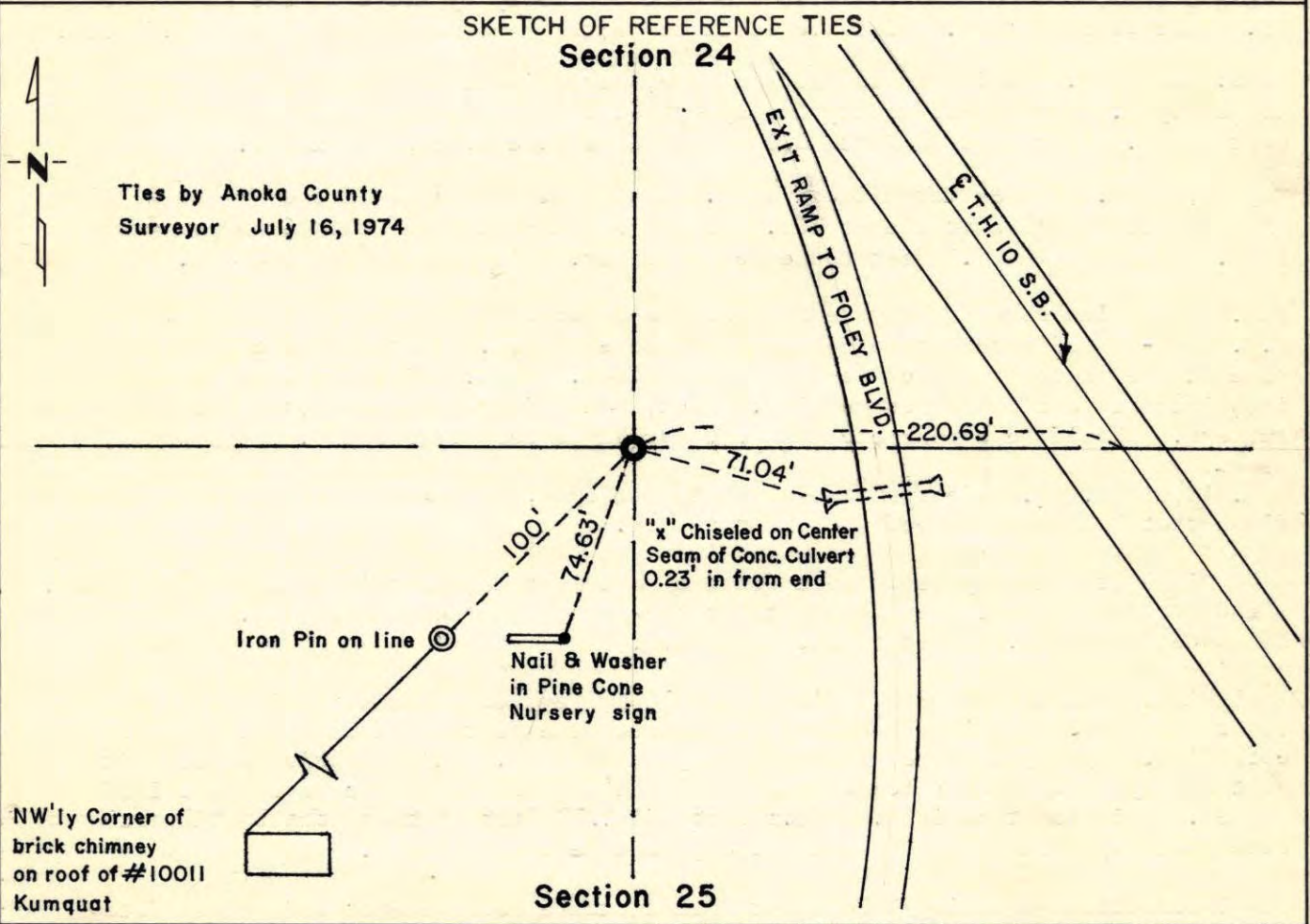
CERTIFICATE OF LOCATION OF GOVERNMENT CORNER

NORTH QUARTER Corner of Section 25, Township 31N, Range 24W, 4th P.M.

STATE OF MINNESOTA, County of Anoka

At the corner location shown on the sketch:

- On 1974 found a Cast Iron Monument
DATE
- left monument as found, lowered monument, removed monument (explain)
- On _____ placed a _____
DATE



Statement of evidence relative to this corner location is on back of page.

I hereby certify that this document and the data contained herein was prepared by me or under my direct supervision.

John E. Suenon 9-2-75
SIGNATURE DATE

Registration No. 10460

- Land Surveyor, Professional Engineer
- County Surveyor, County Engineer

OFFICE OF THE REGISTER OF DEEDS

County of _____

I hereby certify that this document was filed in the Reg. of Deeds office at _____ .M. on the _____ day of _____ A.D., 19 _____

Register of Deeds _____

By _____, Deputy

DOCUMENT NO. _____

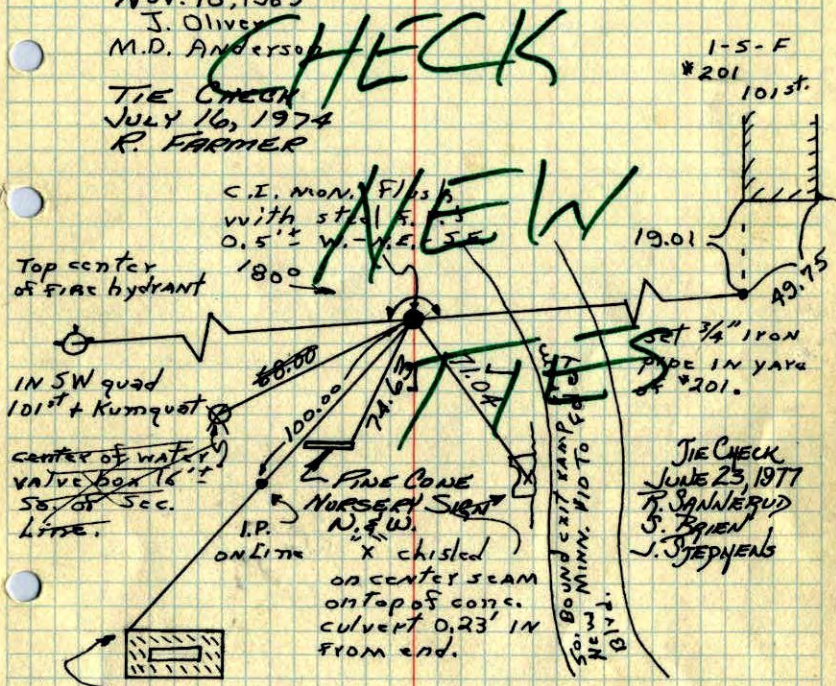
N¹/₄ Cor. Sec. 25 T31 R24

Replaced cast iron monument flush removed for construction.

Nov. 18, 1965

J. Oliver
M.D. Anderson

TIE CHECK
JULY 16, 1974
R. FARMER



n.w.ly cor of brick chimney on roof of #10011 Kumquat

Tie Check
July 31, 1970
H. Larson
W. Weslander

Tie Check
July 12, 1966
H. Larson
D. Potter

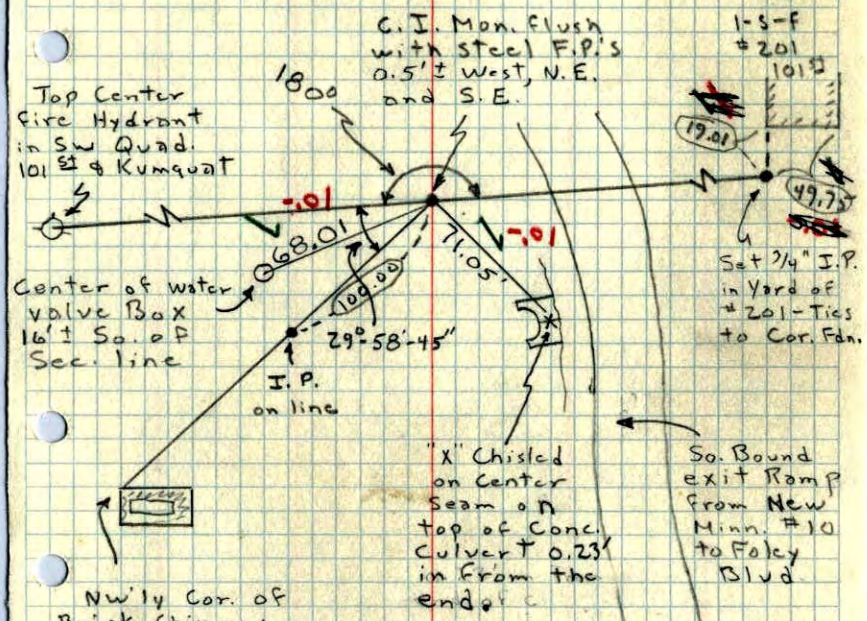
TEMPERATURE CORRECTED AND HORIZONTALLY TAPED MEASUREMENTS

ROLAND W. ANDERSON
COUNTY SURVEYOR
ANOKA COUNTY, MINNESOTA

N¹/₄ Cor. Sec. 25, T31, R24

Replaced Cast Iron Monument removed for Const. circled Dist. are corrected.

Nov. 18, 1965
J. Oliver
M.D. Anderson



Nwly Cor. of Brick Chimney on roof of #10011 Kumquat.

"X" Chisled on Center Seam on top of Conc. Culvert 0.23' in from the end.

So. Bound exit Ramp from New Minn. #10 to Foley Blvd.

N 1/4 Cor. Sec. 25, T31, R 24

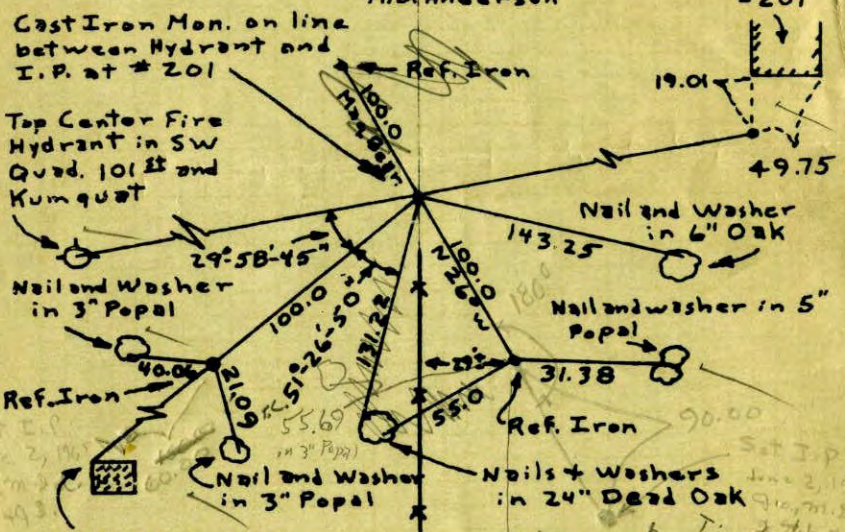
Found 3/4" I.P. which fits old Ties very good.
Replaced with Cast Iron Mon. and took
additional Ties - Set 1" Red I.P. on No. Side -
Sticking up 15"



Set 3/4" I.P. in Yd.
of #201 - Ties
to Cor. Fdn.

1 June 62
J. Oliver
M.D. Anderson

1-5-F
#201



ROLAND W. ANDERSON
COUNTY SURVEYOR
ANOKA COUNTY, MINNESOTA

**TEMPERATURE CORRECTED
AND HORIZONTALLY
TAPED MEASUREMENTS**

*be Ties should
be sufficient
Apr. 24, 1965
9.0, m.d.a.
4" Popal + S.I.*

N 1/4 Cor. Sec. 25, T31, R 24

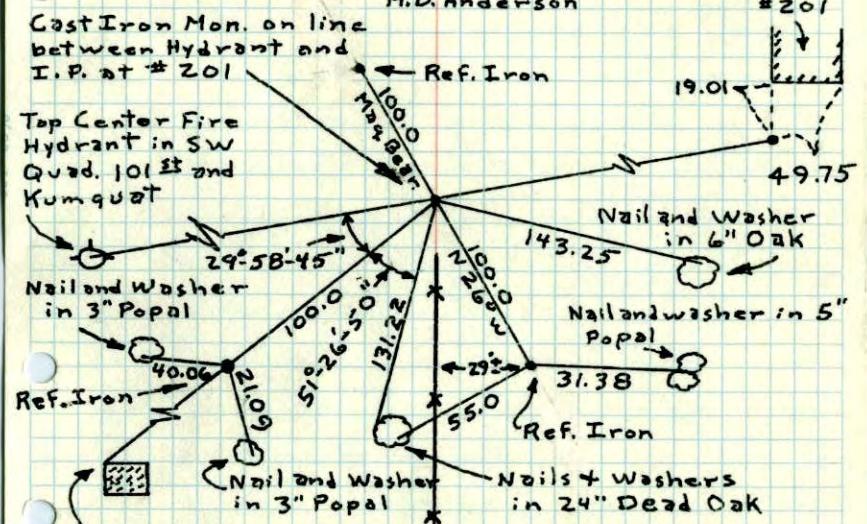
Found 3/4" I.P. which fits old Ties very good.
Replaced with Cast Iron Mon. and took
additional Ties - Set 1" Red I.P. on No. Side -
Sticking up 15"



Set 3/4" I.P. in Yd.
of #201 - Ties
to Cor. Fdn.

1 June 62
J. Oliver
M.D. Anderson

1-5-F
#201

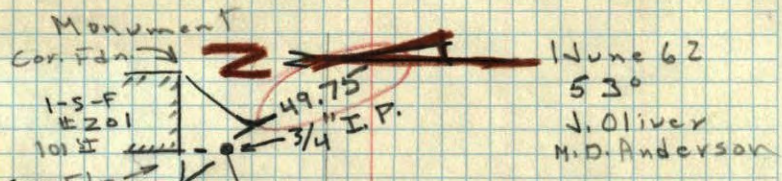


ROLAND W. ANDERSON
COUNTY SURVEYOR
ANOKA COUNTY, MINNESOTA

**TEMPERATURE CORRECTED
AND HORIZONTALLY
TAPED MEASUREMENTS**

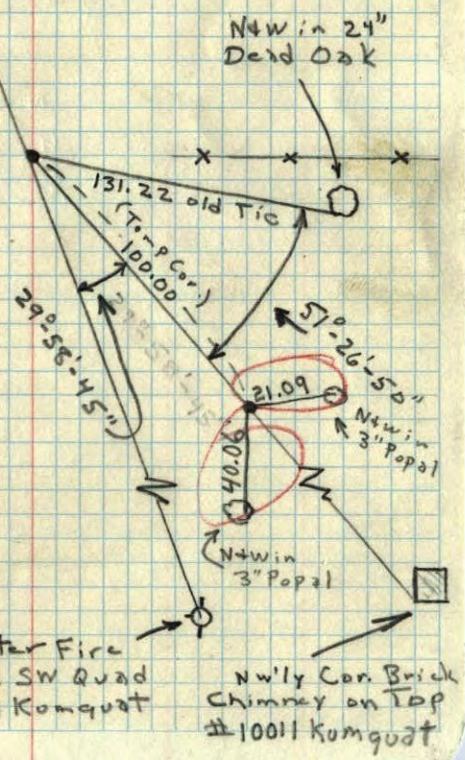
N¹/₄ Cor. Sec. 25, T31, R24

Found 3/4" I.P. which fits old Ties very good - Retied & replaced with Cast Iron Monument



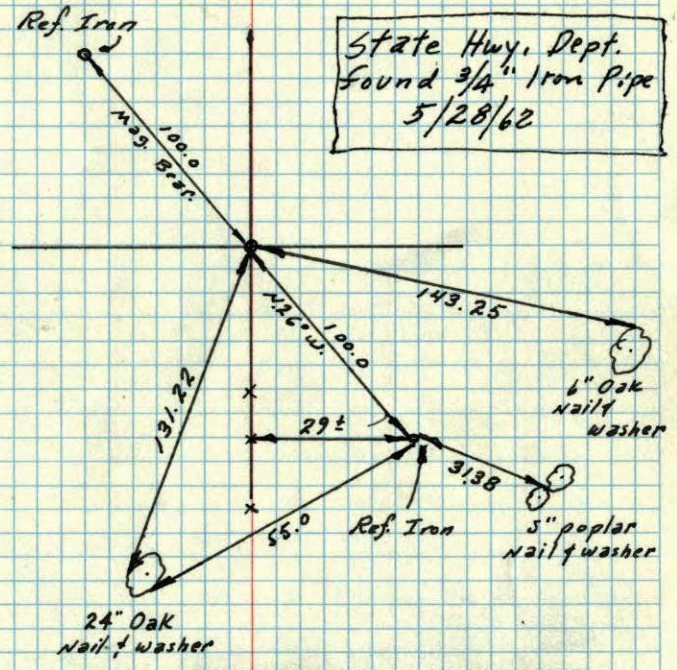
Set 1" Red I.P. on No. Side - Sticking up 15"
Mon. on line between Hydrant and I.P. at #201

Dirt Rd



N¹/₄ Cor. Sec 25-31-24

Conc. Mon gone when water main installed, Set spike only at this time
All other tie trees gone



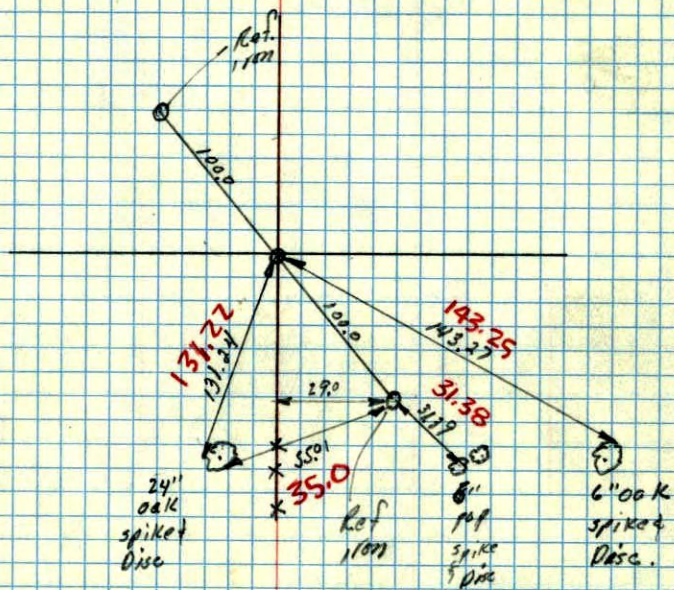
TEMPERATURE CORRECTED AND HORIZONTALLY TAPED MEASUREMENTS

14 Dec. 1960
R. Freeman
M. Anderson

ROLAND W. ANDERSON
COUNTY SURVEYOR
ANOKA COUNTY, MINNESOTA

14 Dec 1960
 Freeman & Skip
 +40°

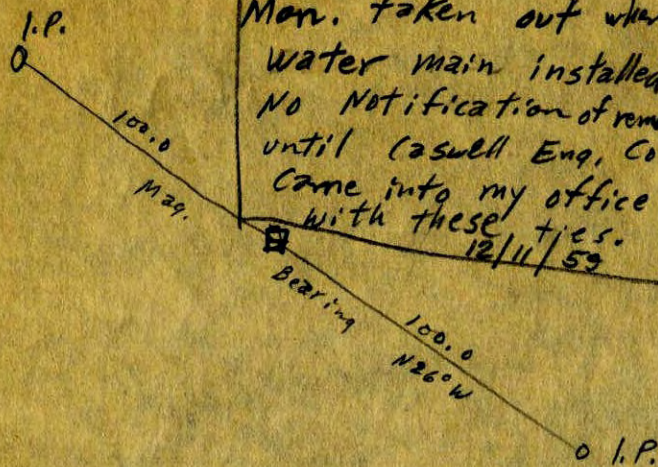
N $\frac{1}{4}$ Cor. Sec. 25. 31-24
 All other tie trees gone.



T.C. in Red

N $\frac{1}{4}$ Cor. Sec. 25,
 T 31, R 24

Dec. 1959
 Mon. taken out when
 water main installed
 No Notification of removal
 until Caswell Eng. Co.
 came into my office
 with these ties.
 12/11/59

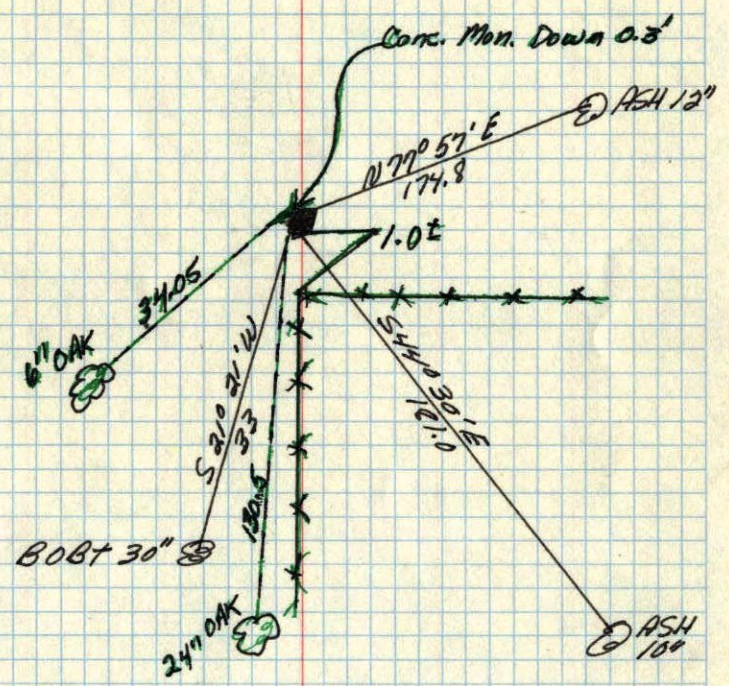


N¹/₄ corner of Sec. 25 T. 31 R. 24

Concrete Monument down 3"

OK. 6/16/59

Retied by
Mander Eng. Co
July 1957



Sept. 15, 1943
Cartwright