

# CERTIFICATE OF LOCATION OF GOVERNMENT CORNER

County of Anoka

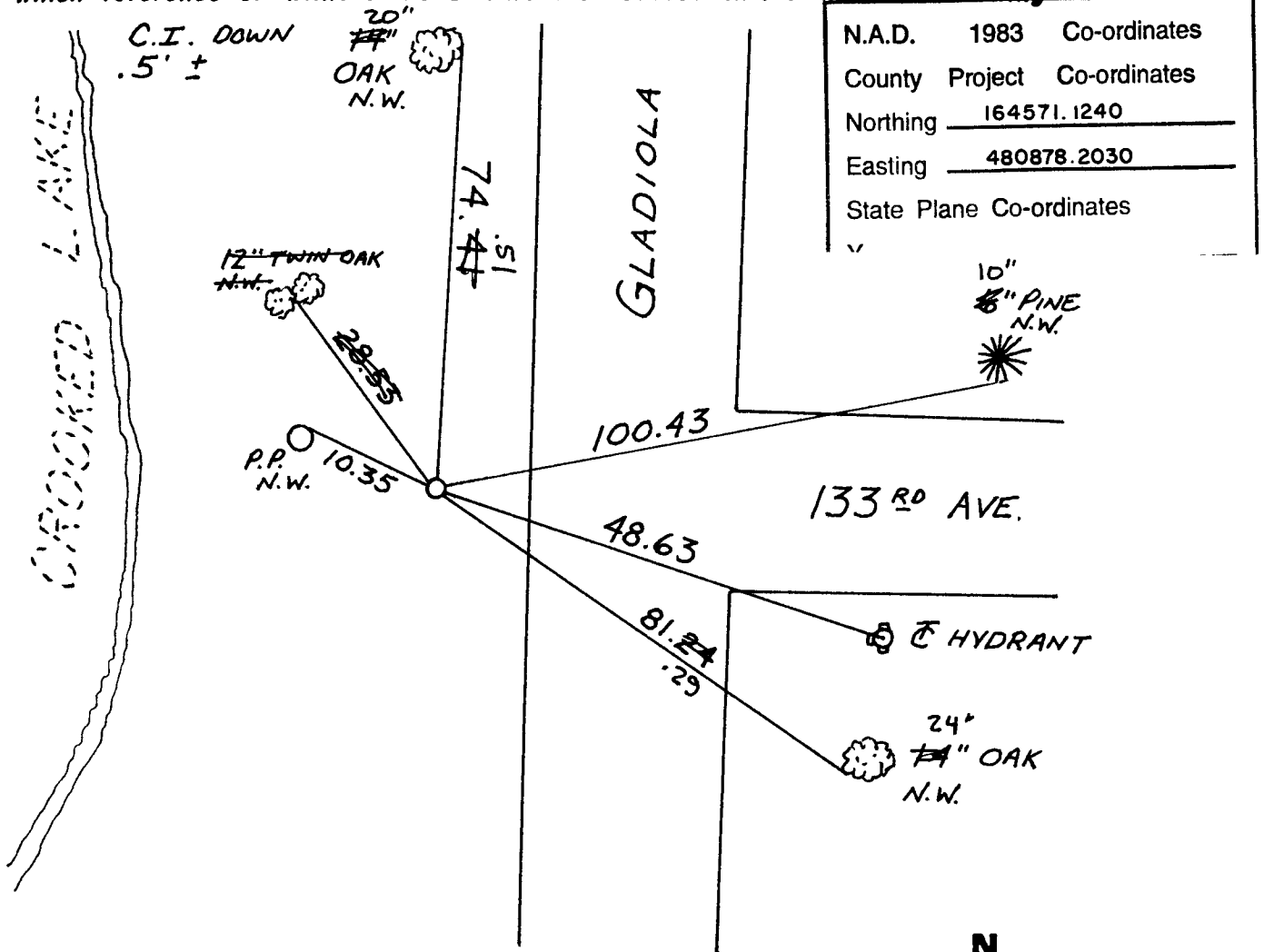
State of Minnesota

W.C. NORTH Corner of Sec. 4 Township 31 Range 24  
LINE

I hereby certify that on the \_\_\_\_\_ day of \_\_\_\_\_, 1960, I found the described corner which was evidenced by CONCRETE MONUMENT

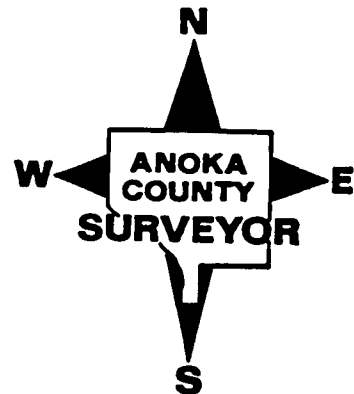
and I further certify that to perpetuate the location of said corner, I did, at the exact location thereof, place a permanent marker consisting of CAST IRON MON.

which reference or witness monuments are located in the manner following:



N.A.D.	1983	Co-ordinates
County	Project	Co-ordinates
Northing		<u>164571.1240</u>
Easting		<u>480878.2030</u>
State Plane Co-ordinates		

Revised date	Revised date	Revised date
5-3-92		
8-17-94		
7-19-00		



W.C. NORTH LINE SECTION 4 T31 R24  
SET CAST IRON FROM AREA RESURVEY

(C.I. DOWN) NW  
5'± 14" OAK

5-3-92  
W. LARSON  
B. KLENZ  
M. STEWART

GLADIOLA ST.

CROOKED LAKE

NW  
12" TWIN  
OAK

74.71  
28.53

NW  
R.P.

10.35

100.43

48.63

133 RD AVE

HYDRANT

81.24

NW  
14" OAK

NW  
6" PINE

NO. 448

TELEPHONE

M.C. #2 on E. side of Crooked Lake  
on N. line of Sec. 4- T31-R24

Cone. Mon. flush.

Placed 1/2" Iron pipe on North side flush

Cast Iron Mon. in place

House

Corner of  
Foundation

Nail & Washer  
20" Bl. Oak  
with Birch ground it

76.86  
76.86  
50'±

(Stump 6/8/62)

Nail & Washer  
16" Bl. Oak

10-50'  
NOTE

1000 CF

100-49'

Nail & Washer  
R.P.

Lake Shore

50'±

33.82'

Cor. of Brick

Cor. Brick  
Front

Hse.

Nail & Washer  
6" Burr Oak

Tie Check  
7/1/74  
R. Farmer

1960

R. Carbon Assist.

Retie 6/8/64

M. D. Anderson  
R. Carlson

Tie Check  
July 28, 1966  
H. Larson  
D. Potter  
G. Reimer

TIE CHECK  
JUNE 14, 1977  
P. SANNEBERG  
S. BRIEN  
J. STEPHENS

TEMPERATURE CORRECTED  
AND HORIZONTALLY  
TAPED MEASUREMENTS

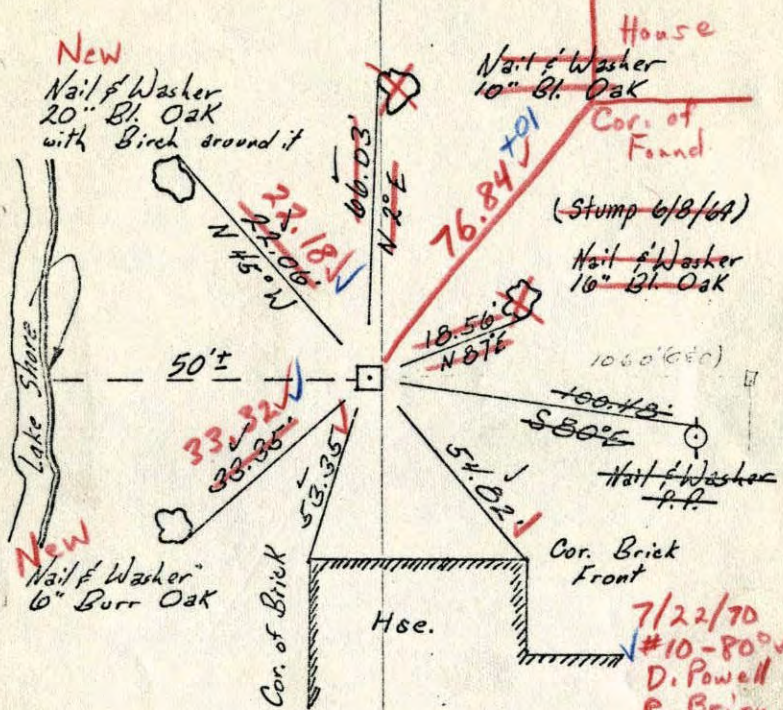
Tie Check  
July 22, 1970  
D. Powell  
R. Brien  
B. Olson

TIE CHECK  
6-25-80  
B. STEPHENS  
P. ROSS  
P. HOKBY

ROLAND W. ANDERSON  
COUNTY SURVEYOR  
ANOKA COUNTY, MINNESOTA

X

MC. #2 on E. side of Crooked Lake  
 on N. line of Sec. 4-T31-R24  
 Conc. Mon. up 0.1' flush.  
 Placed 1/2" Iron pipe on North side flush



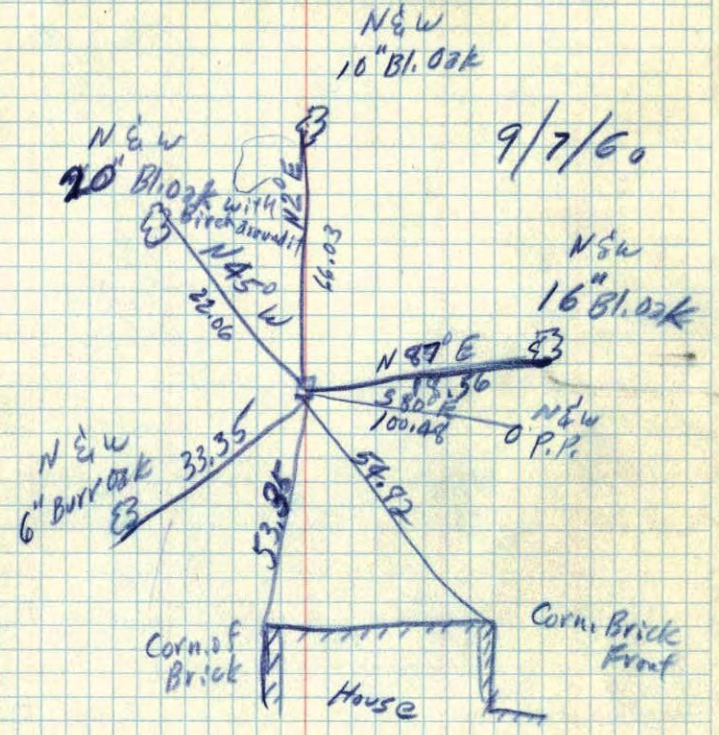
1960  
 R. Carlson Assist.  
 Retie 6/8/64  
 M. D. Anderson  
 R. Carlson  
 Tie Check  
 July 28, 1966  
 H. Larson  
 D. Potter  
 G. Reimer

TEMPERATURE CORRECTED  
 AND HORIZONTALLY  
 TAPED MEASUREMENTS

ROLAND W. ANDERSON  
 COUNTY SURVEYOR  
 ANOKA COUNTY, MINNESOTA

# 2

M.C. on E. side of Crooked Lake  
 on North Line of Sec. 4, T31-R24  
 Conc. Mon. up 0.1

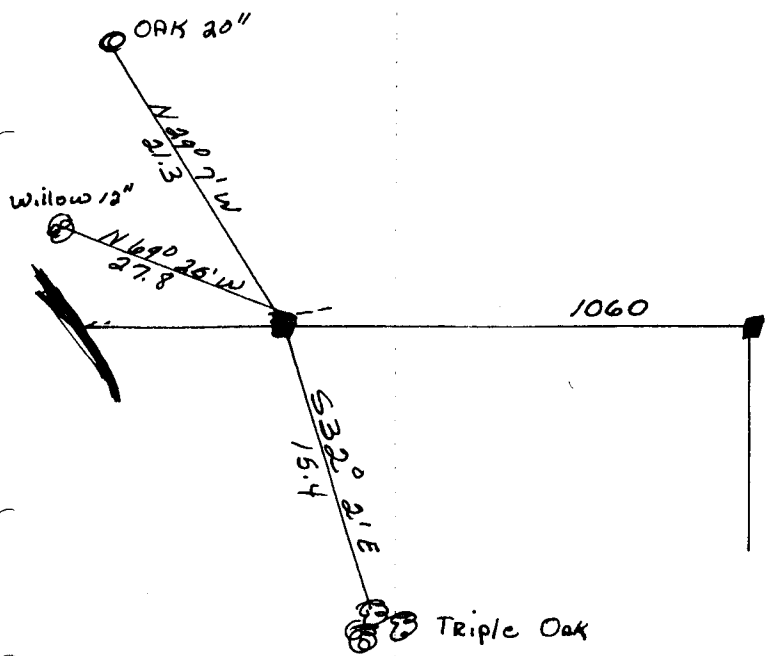


1919/60

OK.  
as. corrected 14

M.C. #2 on N. line of Sec. 4. T. 31. R. 24

Concrete Monument flash



MAY 5, 1947  
Caddwright