

# CERTIFICATE OF LOCATION OF GOVERNMENT CORNER

County of Anoka

State of Minnesota

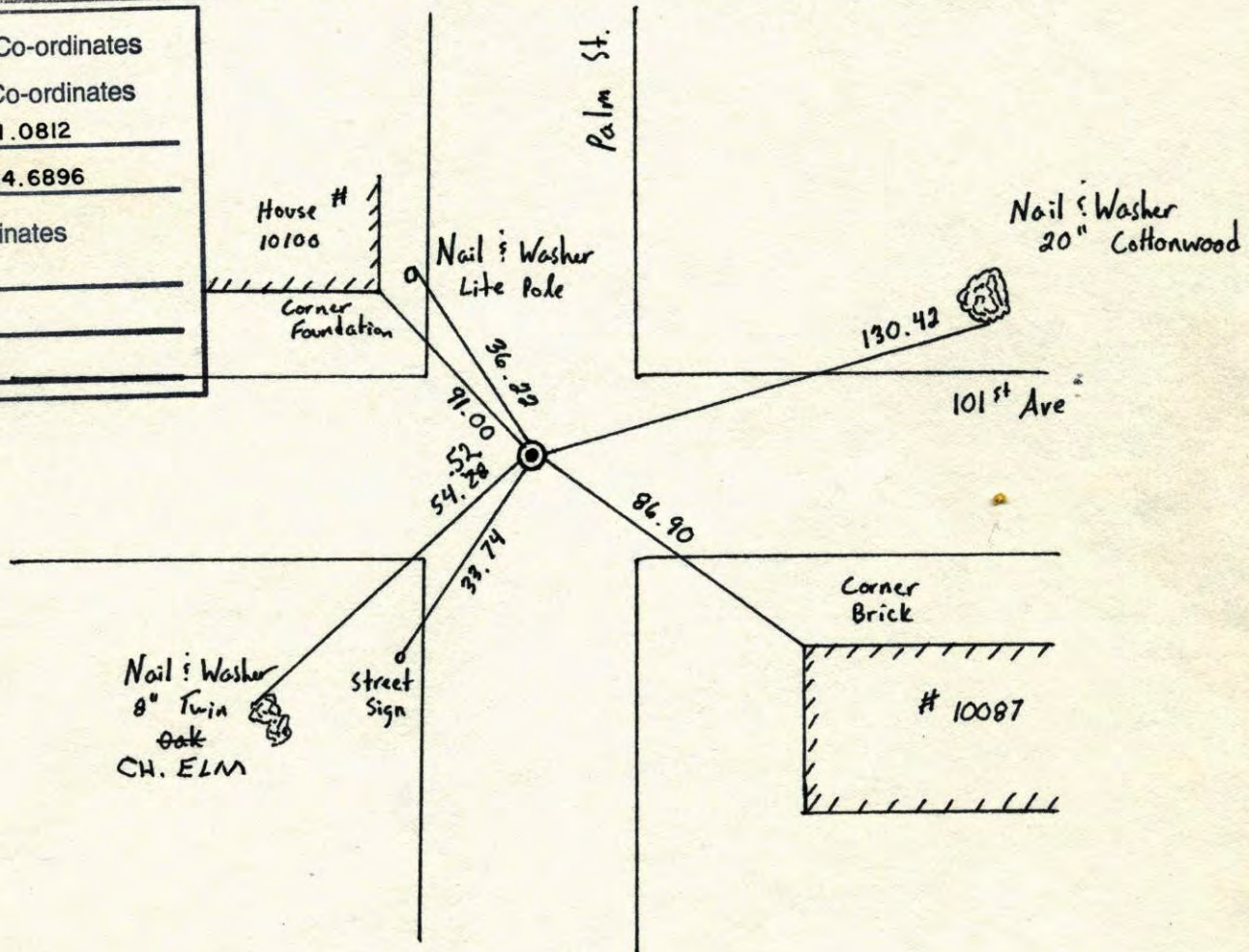
Northwest Corner of Sec. 25 Township 31 Range 24

I hereby certify that on the 28 day of July, 1960, I found the described corner which was evidenced by Concrete Monument

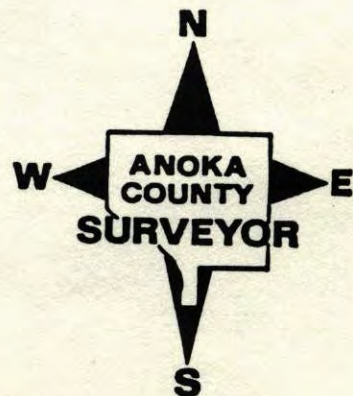
and I further certify that to perpetuate the location of said corner, I did, at the exact location thereof, place a permanent marker consisting of Cast Iron Monument  
ON TOP OF BROKEN CONCRETE

which reference or witness monuments are located in the manner following:

N.A.D.	1983	Co-ordinates
County	Project	Co-ordinates
Northing	<u>143041.0812</u>	
Easting	<u>494694.6896</u>	
State Plane Co-ordinates		
Y	_____	
X	_____	
Date	_____	

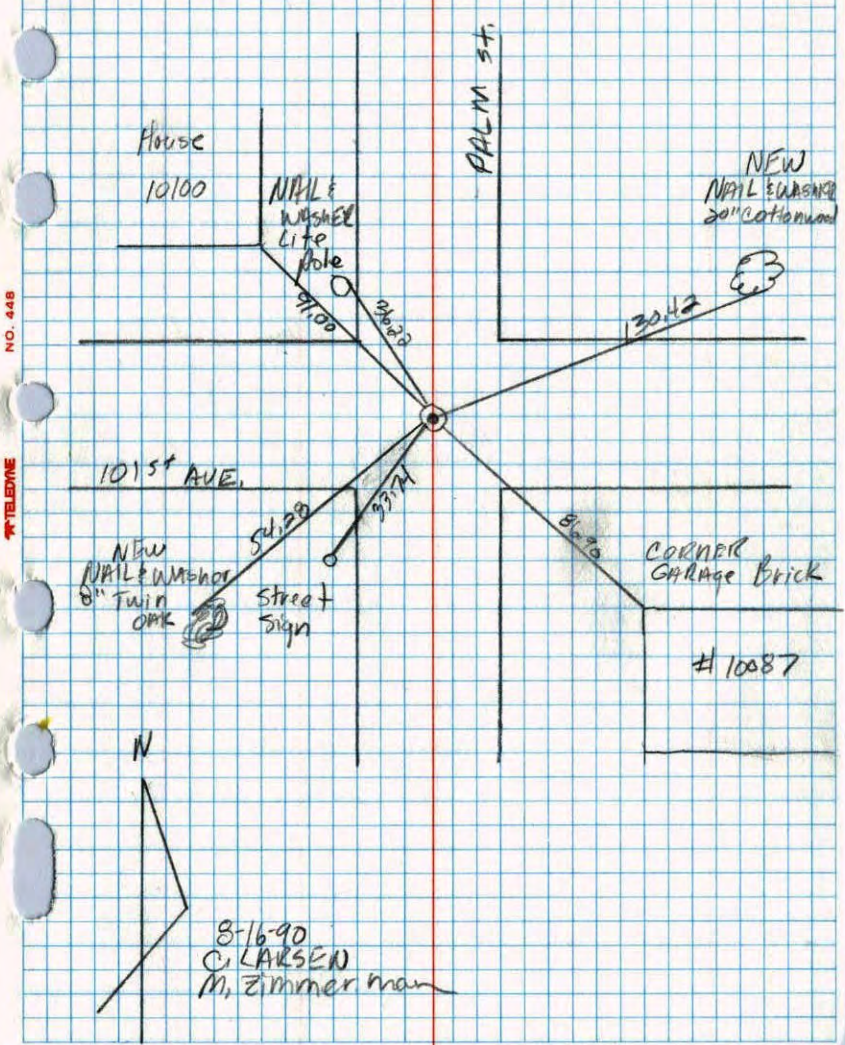


Revised date	Revised date	Revised date
<u>6-17-86</u>		
<u>1-26-88</u>		
<u>8-16-90</u>		
<u>6-29-94</u>		

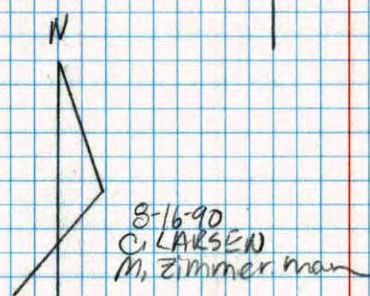


Northwest Sec. 25 T31 R24

Retied cast Iron monument



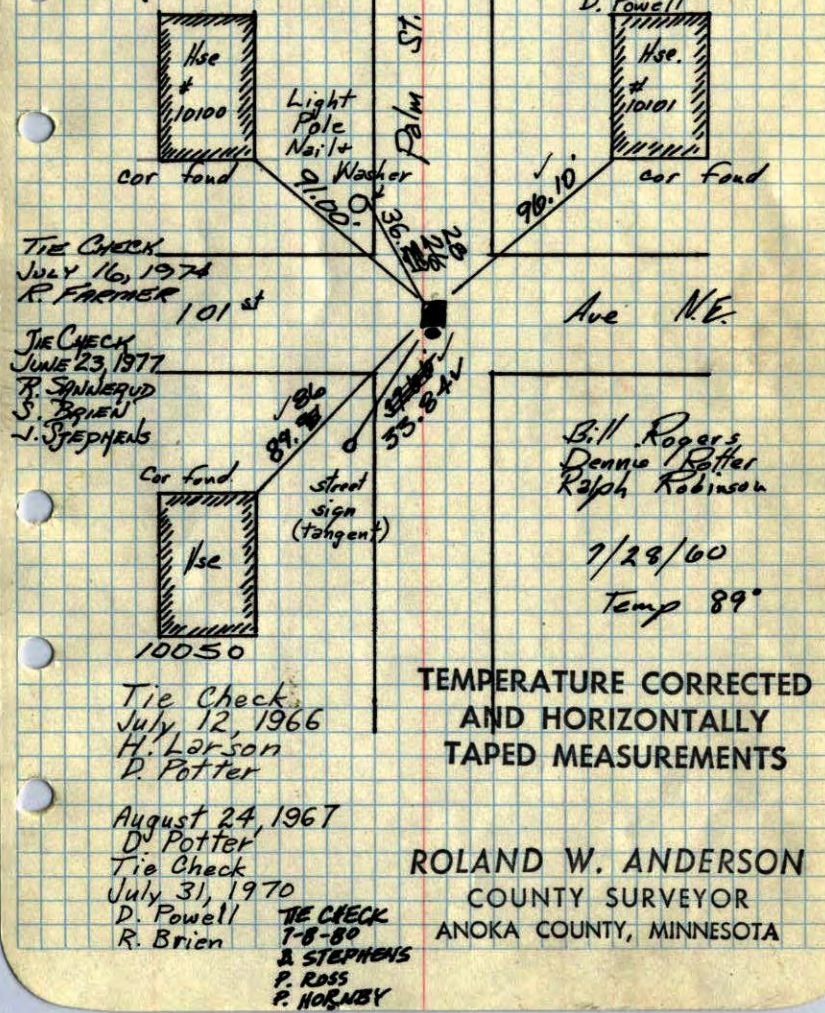
NO. 448 TELEPHONE



NW Cor Sec 25 - T31 - R24

Conc. Mon. down .5'  
~~Picked iron on South - down .25'~~

Ties checked June 3, 1964  
M.D. Anderson  
R. Carlson  
(All tie good)  
Cast Iron Monument in place flush. Monument over broken off concrete monument.  
Sept. 13, 1966  
M.D. Anderson  
D. Powell



TEMPERATURE CORRECTED AND HORIZONTALLY TAPED MEASUREMENTS

ROLAND W. ANDERSON  
COUNTY SURVEYOR  
ANOKA COUNTY, MINNESOTA

Bill Rogers  
Dennis Potter  
Ralph Robinson  
7/28/60  
Temp 89°

TIE CHECK  
7-8-80  
J. STEPHENS  
P. ROSS  
P. HORNBY

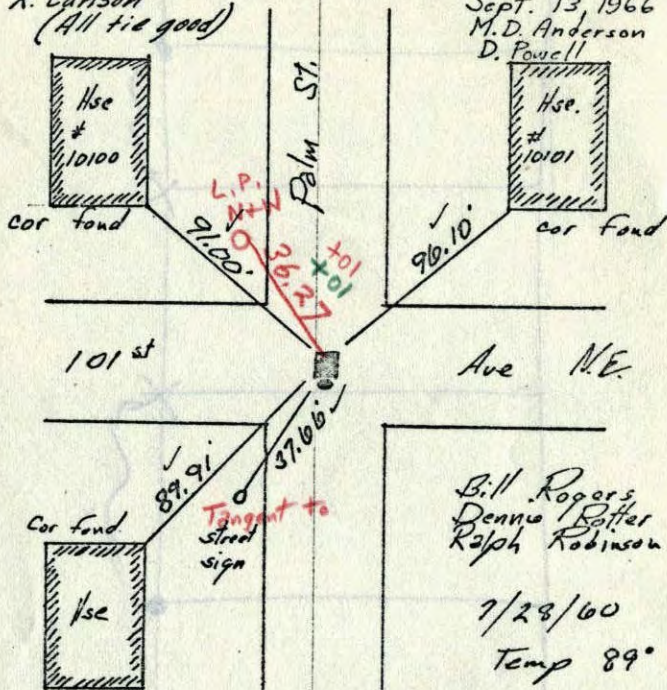
73  
NW Cor. Sec 25 - T31 - R24

Conc. Mon. down .5'

~~Pinched Iron on South - down .25'~~

Ties checked  
June 3, 1964  
M.D. Anderson  
R. Carlson  
(All tie good)

Cast Iron Monument  
in place flush. Monument  
over broken off concrete monument.  
Sept. 13, 1966  
M.D. Anderson  
D. Powell



Tie Check  
July 12, 1966  
H. Larson  
D. Potter

August 24, 1967  
D. Potter

7/31/70  
#10 - 760  
D. Powell  
R. Brien

TEMPERATURE CORRECTED  
AND HORIZONTALLY  
TAPED MEASUREMENTS

ROLAND W. ANDERSON  
COUNTY SURVEYOR  
ANOKA COUNTY, MINNESOTA

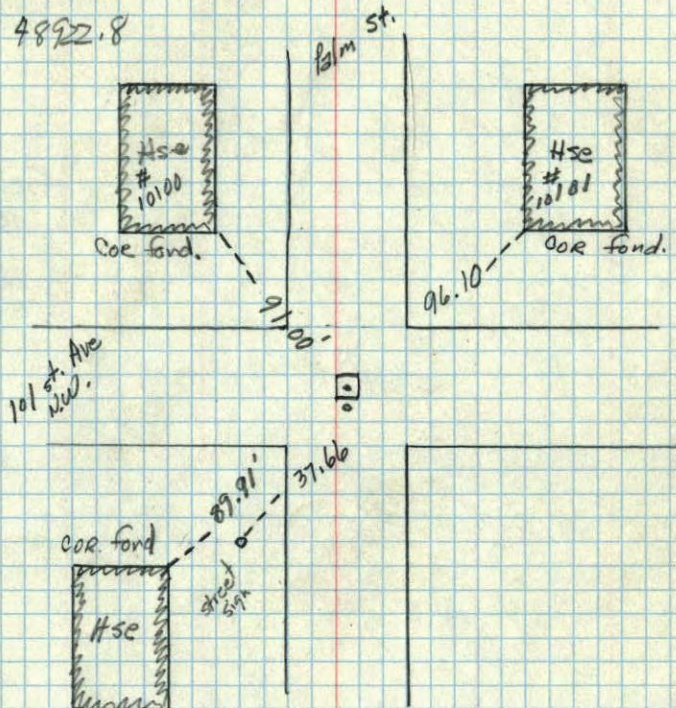
48882.9

NW Cor Sec 25, T31, R24,  
Conc. Mon down .5'  
Pinched Iron South down .25'

7/28/60

89°

48922.8

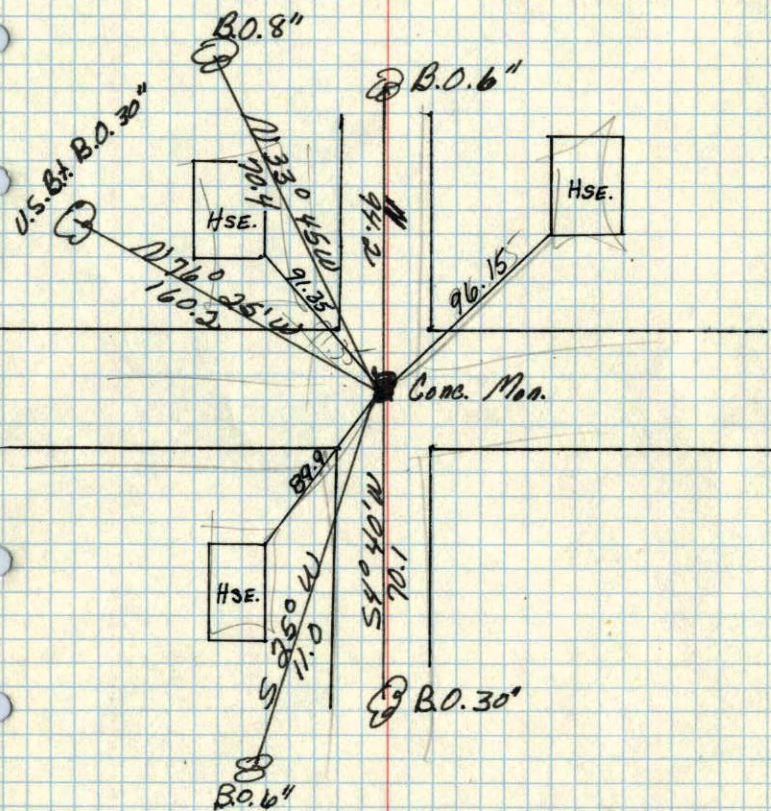


Bill Rogers  
Ralph Robinson  
Dennis Potter

7/28/60  
Temp 89°

NE corner of Sec. 26 T.31N. R.24W.

Conc. Man. Flush



July 9, 1959  
N.N. Gas

Aug. 15, 1943  
Cattwright