

CERTIFICATE OF LOCATION OF GOVERNMENT CORNER

County of Anoka

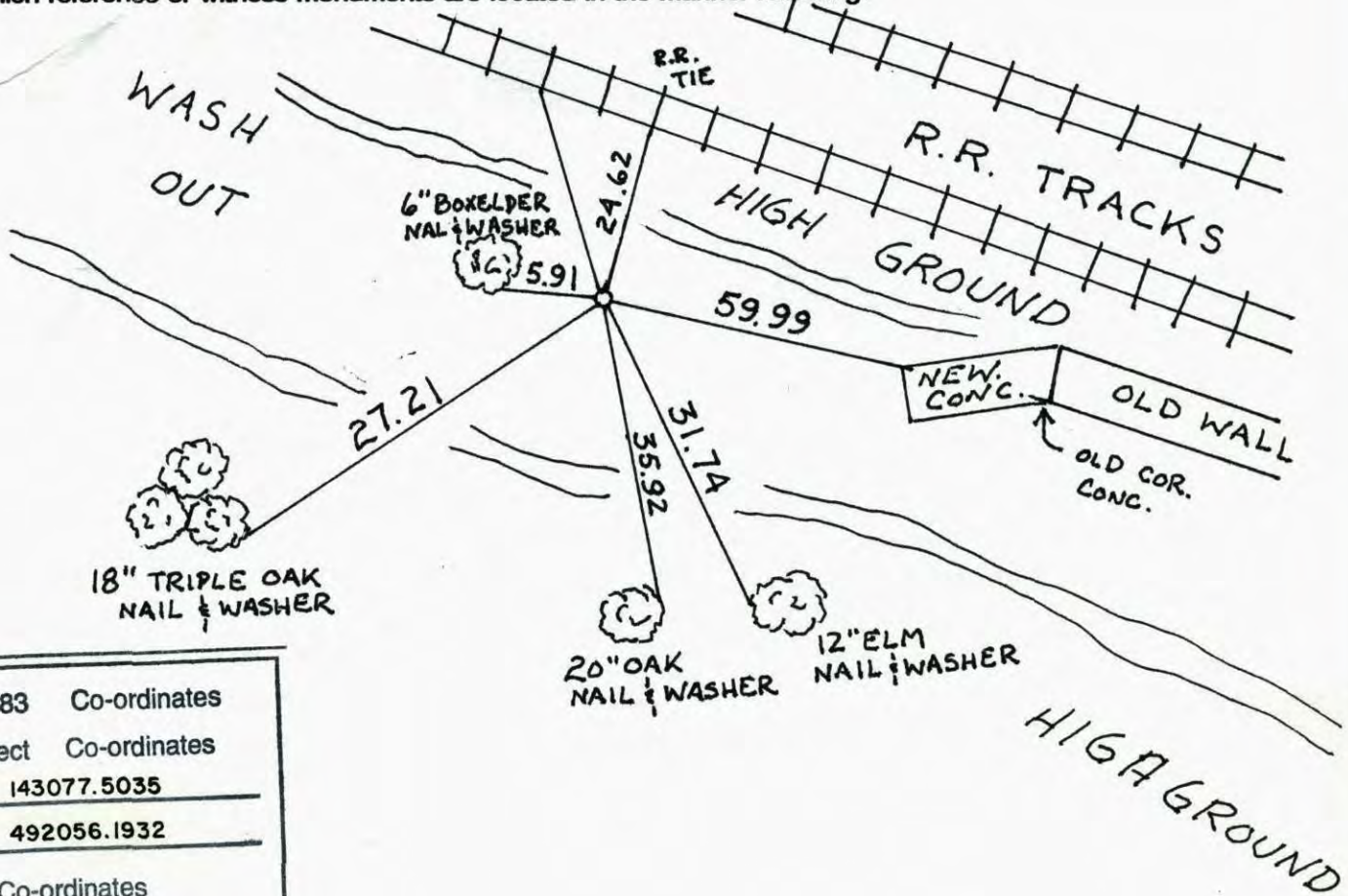
State of Minnesota

NORTH 1/4 Corner of Sec. 26 Township 31 Range 24

I hereby certify that on the 23 day of FEB., 1960, I found the described corner which was evidenced by CONC. MON.

and I further certify that to perpetuate the location of said corner, I did, at the exact location thereof, place a permanent marker consisting of CAST IRON MON.

which reference or witness monuments are located in the manner following:



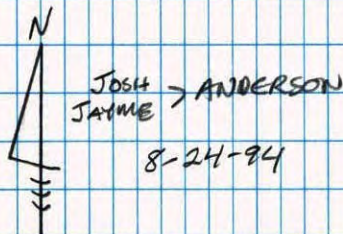
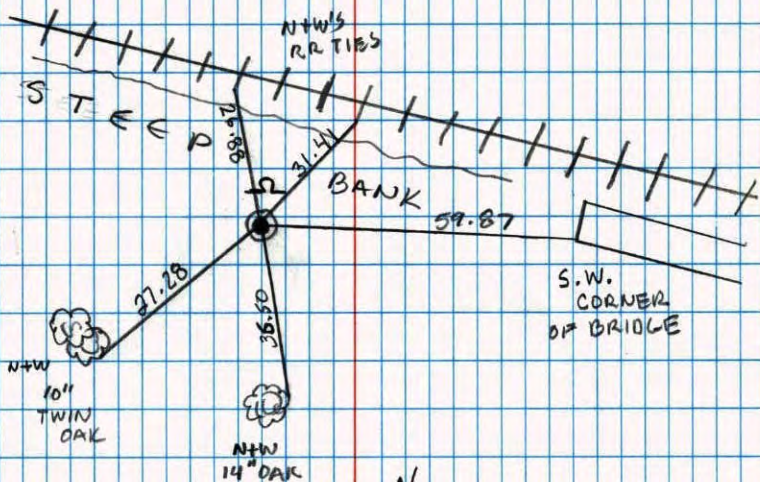
N.A.D.	1983	Co-ordinates
County Project	Co-ordinates	
Northing	<u>143077.5035</u>	
Easting	<u>492056.1932</u>	
State Plane Co-ordinates		
Y	_____	
X	_____	
Date	_____	

Revised date	Revised date	Revised date
<u>8-24-94</u>		
<u>9-24-01</u>		



NORTH 1/4 SEC. 26 TW. 31 R. 24

RE TIE CAST IRON MONUMENT



NO. 446

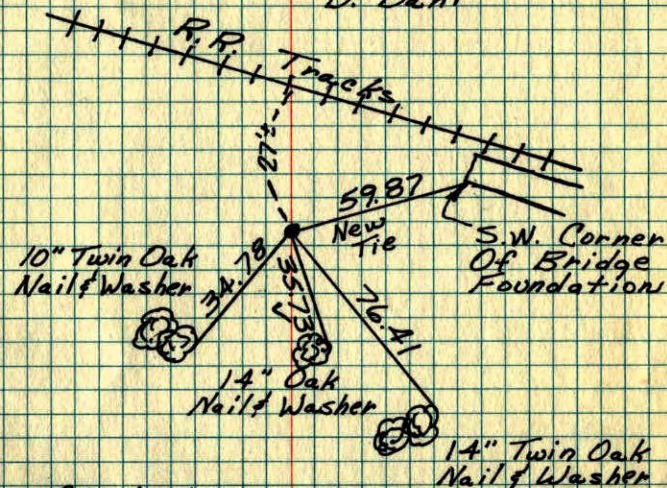
NATIONAL PORTRAST

N 1/4 Cor. Sec 26-T31-R 24

Concrete Monument Down 2"

Replace With Cast Iron (Down .5")

July 12, 1974
R. Farmer
N. Dahl
D. Dahl



Ties Checked
June 3, 1964
M.D. Anderson
R. Carlson

Feb 23, 1960

Tie Check
July 12, 1974
R. Farmer
N. Dahl
D. Dahl

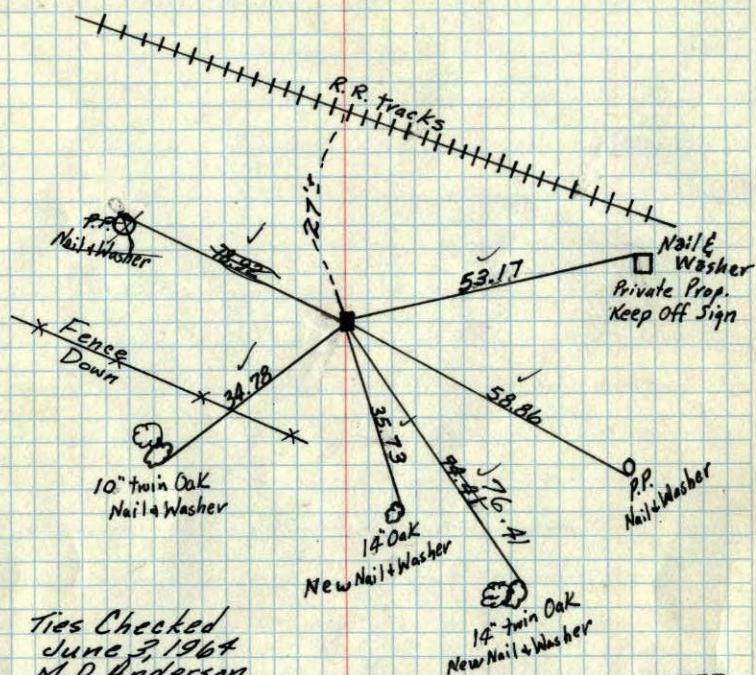
TIE CHECK
7-1-80
B. STEPHENS
P. ROSS
P. HORNBY

TIE CHECK
JUNE 23, 1977
R. SANDERUD
J. BOREN
J. STEPHENS

ROLAND W. ANDERSON, COUNTY SURVEYOR, ANOKA COUNTY, MINNESOTA, TEMPERATURE CORRECTED AND HORIZONTALLY TAPED MEASUREMENTS

N 1/4 Cor. Sec. 26 T31 R24

Con. Mon. down 2"



Ties Checked
June 3, 1964
M.D. Anderson
R. Carlson

(All ties good)

Tie Check
July 15, 1966
H. Larson
D. Potter
G. Reimer

Tie Check
August 3, 1970
D. Powell
R. Brien
B. Olson

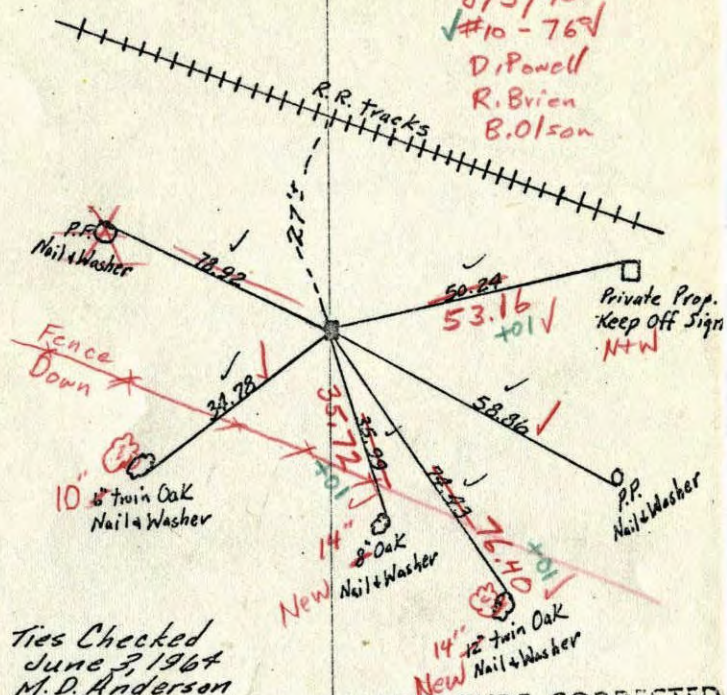
TEMPERATURE CORRECTED
AND HORIZONTALLY
TAPED MEASUREMENTS

Feb. 23, 1960

ROLAND W. ANDERSON
COUNTY SURVEYOR
ANOKA COUNTY, MINNESOTA

N 1/4 Cor. Sec. 26 T31 R24

Con. Mon. down 2"



Ties Checked
June 3, 1964
M.D. Anderson
R. Carlson

(All ties good)

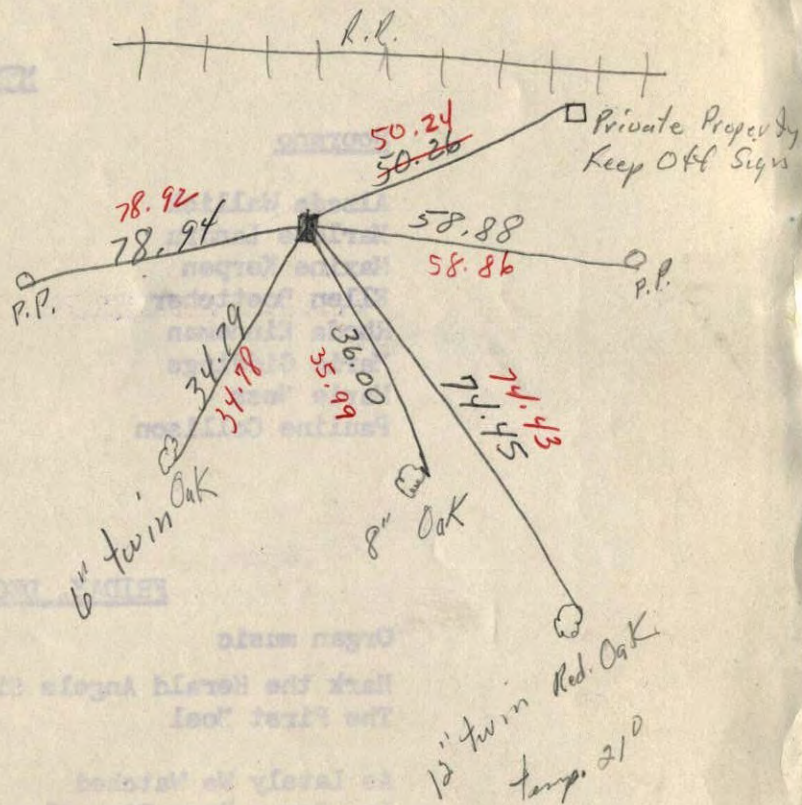
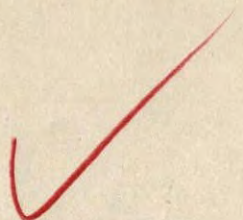
Tie Check
July 15, 1966
H. Larson
D. Potter
G. Reimer

TEMPERATURE CORRECTED
AND HORIZONTALLY
TAPED MEASUREMENTS

Feb. 23, 1960

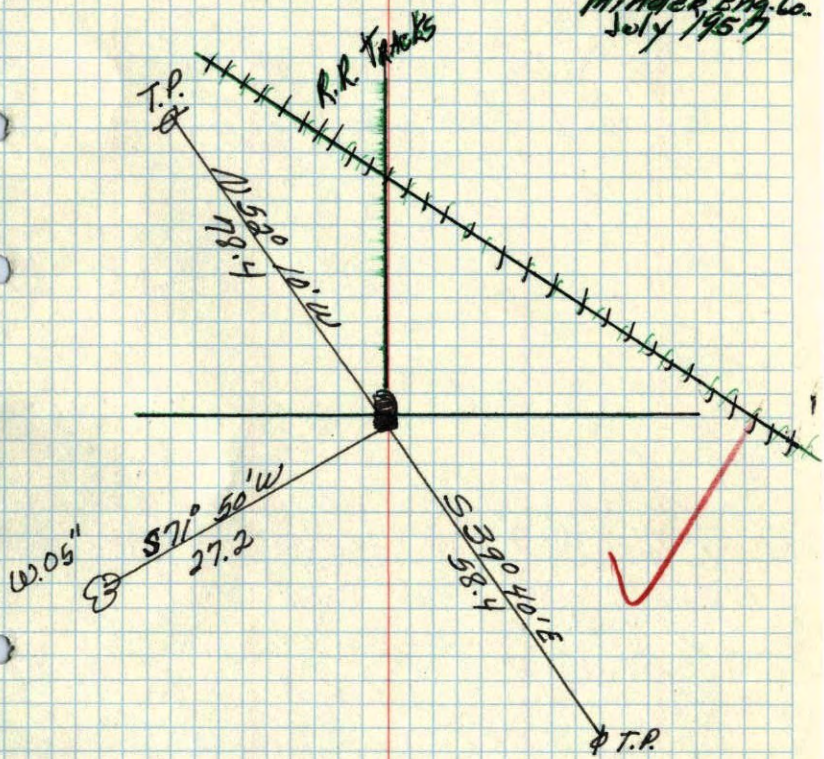
ROLAND W. ANDERSON
COUNTY SURVEYOR
ANOKA COUNTY, MINNESOTA

N¹/₄ Cor. Sec. 26 T31 R24
 Con. Mon. down 2"



N¹/₄ corner of Sec. 26 T31 R24
 Conc. Mon. flush

Ties OK
 Minder Eng. Co.
 July 1957



Nov. 11, 1944
 Caetweight