

# CERTIFICATE OF LOCATION OF GOVERNMENT CORNER

County of Anoka

State of Minnesota

SOUTHEAST Corner of Sec. 22 Township 31 Range 24

10:43

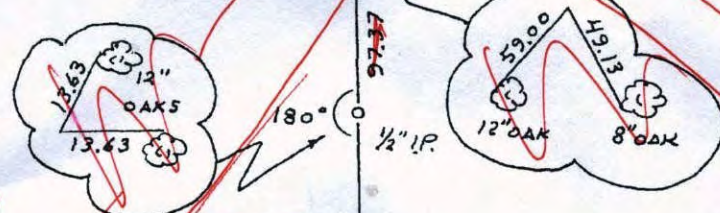
I hereby certify that on the 24 day of JUNE, 1960, I found the described corner which was evidenced by CONCRETE MONUMENT

1.512

and I further certify that to perpetuate the location of said corner, I did, at the exact location thereof, place a permanent marker consisting of CAST IRON MONUMENT SIGN AND POST ON NORTH SIDE

which reference or witness monuments are located in the manner following:

*Handwritten notes:*  
 3/25/00  
 10/1/00  
 10/1/00



SET SOLID MON.

BK-SH.  
 3-24-10  
 MON. BROKEN  
 GPS/  
 NEEDS NEW  
 SIGN

(UP 5')  
 FILE NOTCH AND PUNCH MARK  
 POWER POLE

14" POPULAR NW (UP 2')  
 14" MAPLE NW (UP 2')

24" POPULAR NW (UP 2')  
 0.105  
 84.99

N.A.D.	1983	Co-ordinates
County Project		Co-ordinates
Northing	143113.8895	
Easting	489418.7452	
State Plane Co-ordinates		
Y		
X		
Date	9/26/01	

NAIL WASHER 6" BOXEIDER  
 NW CORNER VERTICAL TRIM OF SHED (UP 3')  
 APPROX 8'x12' SHED  
 NAIL WASHER 1/2" COTONWOOD

12" POPULAR NW (UP 3')

RESET C.I.M.

JS SH 56.  
 2-14-11

VR3 COORDS ON NEW C.I.M.

143113.8761  
 489418.7474

Revised date	By
6-20-86	D. ROSS
REDRAWN 1-28-88	H. LARSON

Minnesota State Plane Coordinates  
 South Zone

Y \_\_\_\_\_ X \_\_\_\_\_

County Surveyor \_\_\_\_\_ Date \_\_\_\_\_

Registered Land Surveyor No. \_\_\_\_\_

DISTS = NEW TIES TO NEW C.I.M. POSITION

# CERTIFICATE OF LOCATION OF GOVERNMENT CORNER

County of Anoka

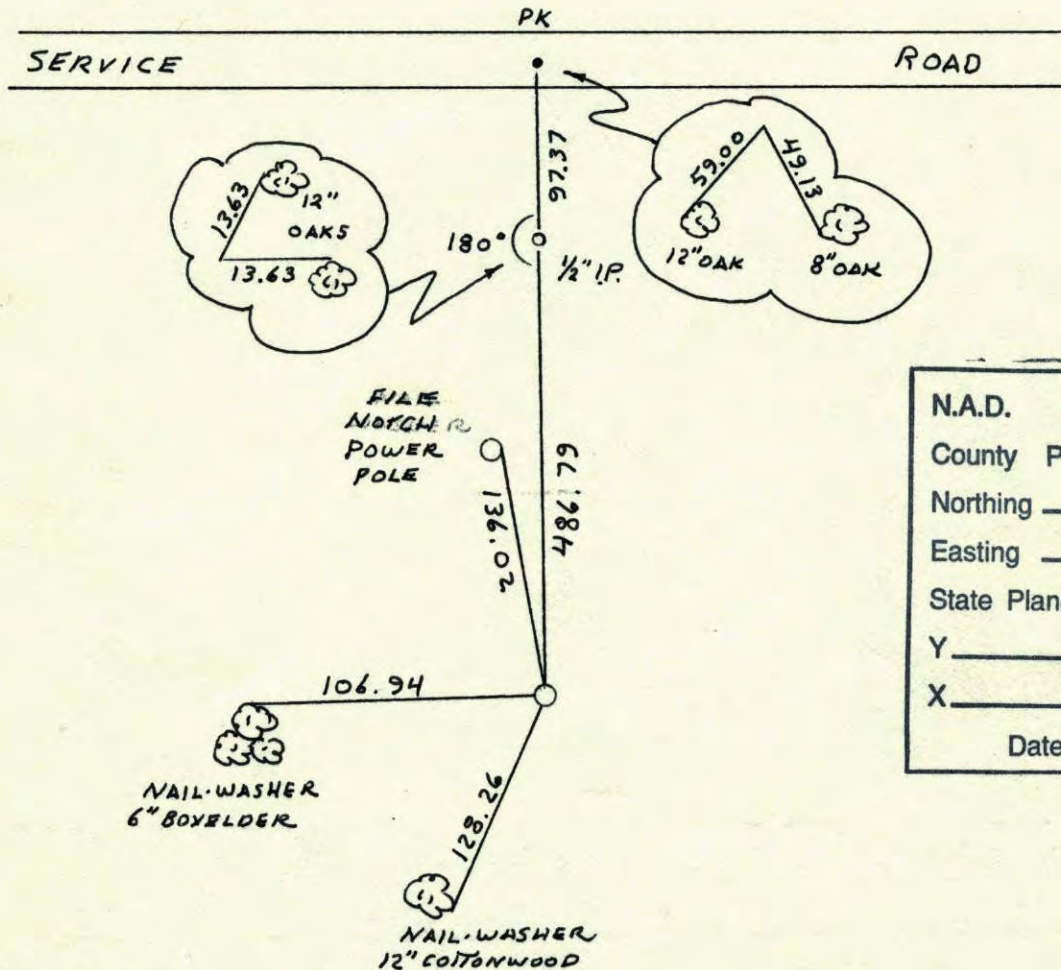
State of Minnesota

SOUTHEAST Corner of Sec. 22 Township 31 Range 24

I hereby certify that on the 24 day of JUNE, 1960, I found the described corner which was evidenced by CONCRETE MONUMENT

and I further certify that to perpetuate the location of said corner, I did, at the exact location thereof, place a permanent marker consisting of CAST IRON MONUMENT SIGN AND POST ON NORTH SIDE

which reference or witness monuments are located in the manner following:



N.A.D.	1983	Co-ordinates
County	Project	Co-ordinates
Northing		<u>143113.8895</u>
Easting		<u>489418.7452</u>
State Plane Co-ordinates		
Y		_____
X		_____
Date _____		

<p><b>Revised date</b></p> <table border="1" style="width: 100%; border-collapse: collapse;"> <tr><td style="padding: 2px;">6-20-86</td></tr> <tr><td style="padding: 2px;">REDRAWN</td></tr> <tr><td style="padding: 2px;">1-28-88</td></tr> <tr><td style="padding: 2px;"> </td></tr> <tr><td style="padding: 2px;"> </td></tr> <tr><td style="padding: 2px;"> </td></tr> <tr><td style="padding: 2px;"> </td></tr> <tr><td style="padding: 2px;"> </td></tr> </table>	6-20-86	REDRAWN	1-28-88						<p><b>By</b></p> <table border="1" style="width: 100%; border-collapse: collapse;"> <tr><td style="padding: 2px;">D. ROSS</td></tr> <tr><td style="padding: 2px;">H. LARSON</td></tr> <tr><td style="padding: 2px;"> </td></tr> <tr><td style="padding: 2px;"> </td></tr> <tr><td style="padding: 2px;"> </td></tr> <tr><td style="padding: 2px;"> </td></tr> <tr><td style="padding: 2px;"> </td></tr> </table>	D. ROSS	H. LARSON					
6-20-86																
REDRAWN																
1-28-88																
D. ROSS																
H. LARSON																

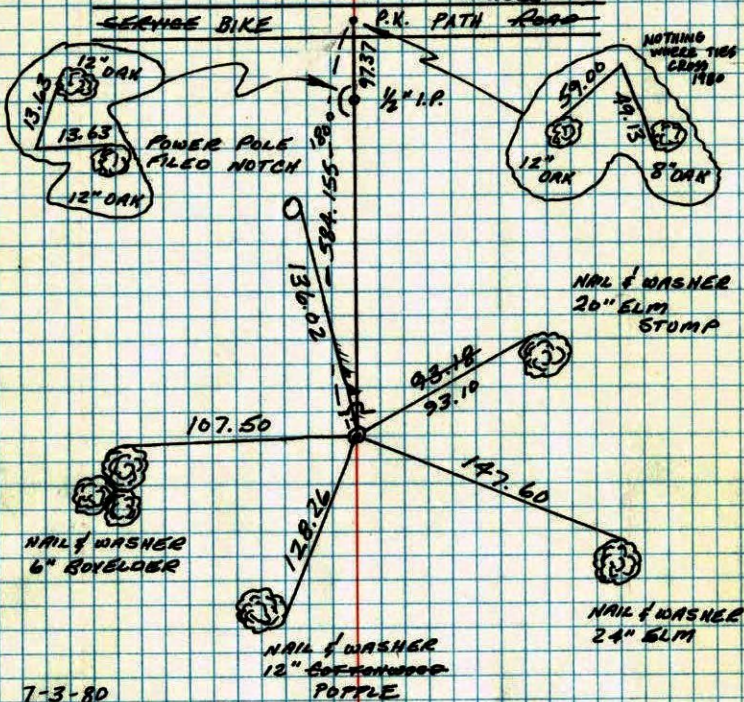
**Minnesota State Plane Coordinates**  
**South Zone**  
 Y \_\_\_\_\_ X \_\_\_\_\_

\_\_\_\_\_, \_\_\_\_\_  
**County Surveyor** **Date**

**Registered Land Surveyor No.** \_\_\_\_\_

## S.E. CORNER SECTION 22-T31-R24

RESET CAST IRON MONUMENT FROM CONSTRUCTION TIES  
AND FROM TIE TO THE EAST. 22 NOV 76 H. LARSON  
RETIED CAST IRON 29 AUG 79 B. STEPHENS  
P. ROSS  
P. ROSS



7-3-80  
TIE CHECK  
B. STEPHENS  
P. ROSS  
P. HORNBY

TEMPERATURE CORRECTED  
AND HORIZONTALLY  
TAPED MEASUREMENTS

ROLAND W. ANDERSON  
COUNTY SURVEYOR  
ANOKA COUNTY, MINNESOTA

S.E. Corner Section 22 - T31-R24

Reset Corner from Construction Ties and  
from tie to the east.

Nov. 22, 1976

H. Larson

P. Guetzko

J. Beotcher

P.R. Filed notch

Reset Cast Iron  
from ties. Sign x  
Post on north side  
5-6-77

H. Larson

P. Guetzko

J. Beotcher

Box elder  
6'

New  
New

12" cottonwood New

Parted C.F. from remaining tie

8-24-79

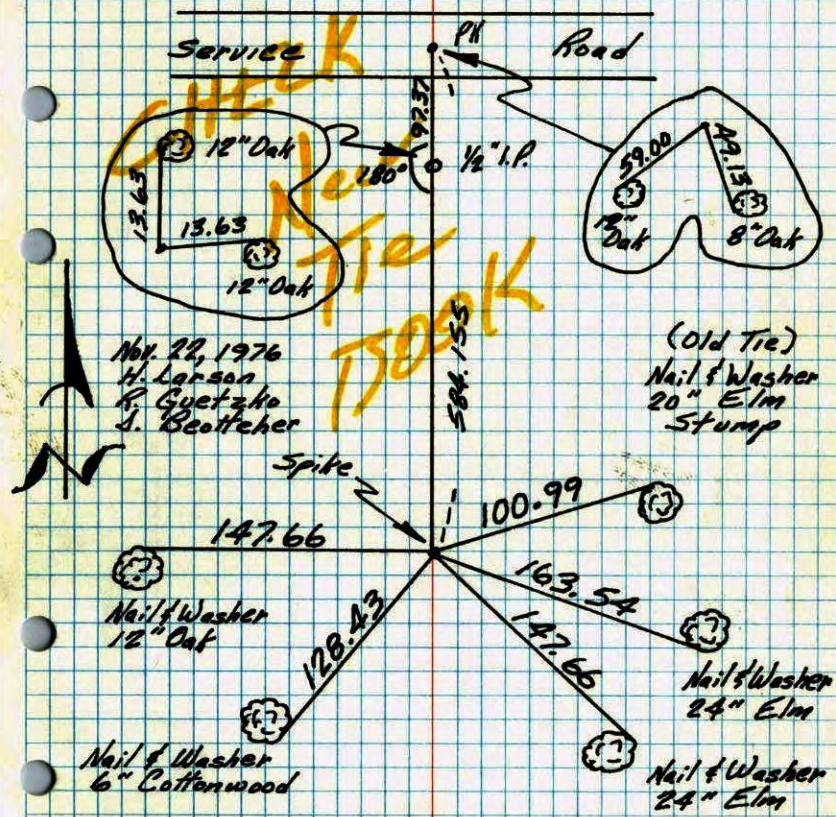
B. Stephens

P. Ross

P. 62

SE. Corner Sec 22 - T31 - R24

Reset Corner From Construction Ties  
And From Tie To THE East.



Nov. 22, 1976  
H. Larson  
B. Guetzko  
J. Beutcher

(Old Tie)  
Nail & Washer  
20" Elm  
Stump

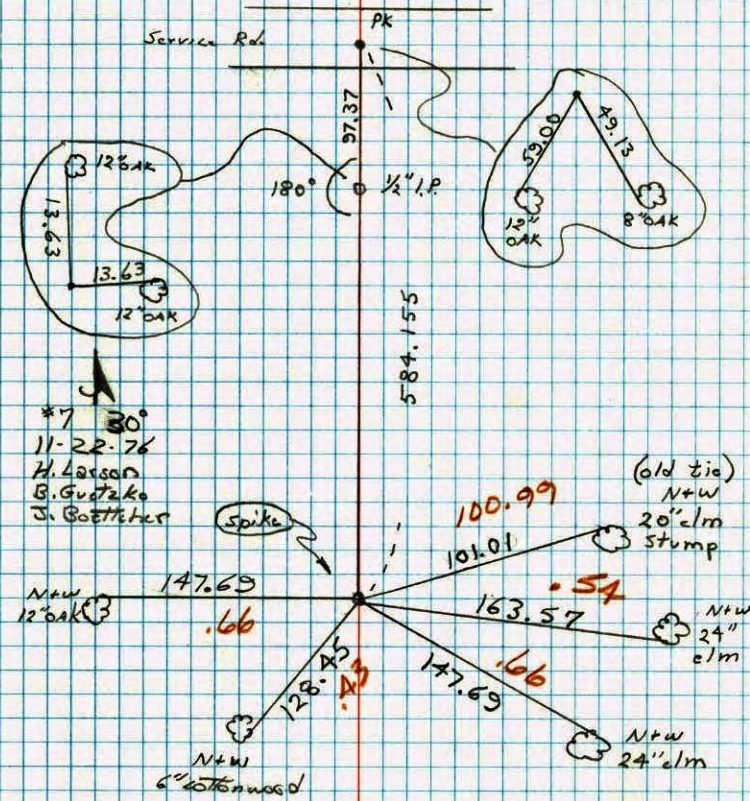
RESET CAST IRON FROM TIES.  
SIGN & POST ON NORTH SIDE.  
5-6-77 H. LARSON  
B. GUETZKO  
J. BEUTCHER

TEMPERATURE CORRECTED  
AND HORIZONTALLY  
TAPED MEASUREMENTS

ROLAND W. ANDERSON  
COUNTY SURVEYOR  
'ANOKA COUNTY, MINNESOTA'

SE. Corner Sec. 22 T31 R24

Reset corner From construction ties and  
From tie to the East.



\*7 30°  
11-22-76  
H. Larson  
B. Guetzko  
J. Beutcher

(old tie)  
N+W  
20" elm  
stump

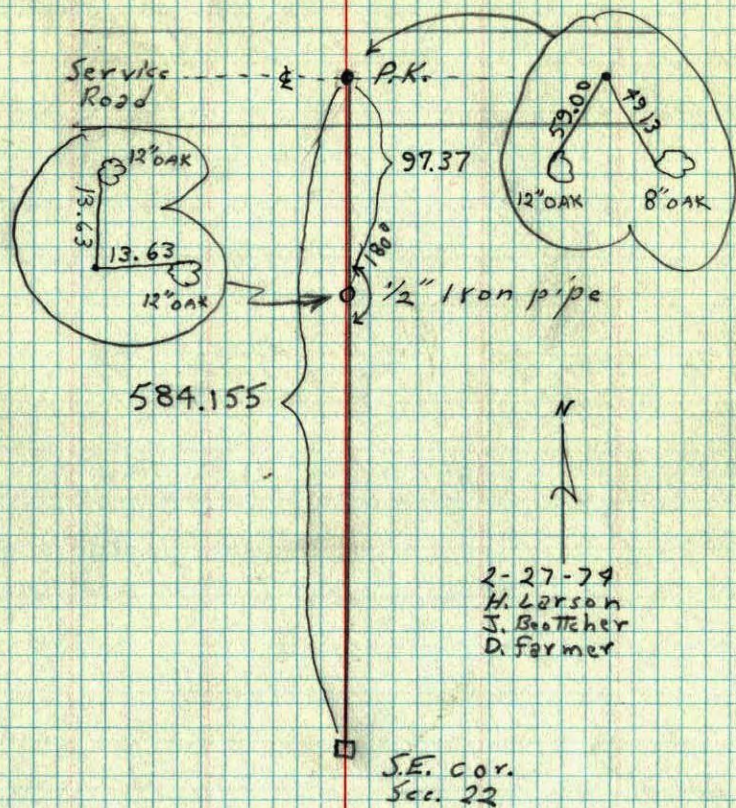
N+W  
12" oak

N+W  
24"  
elm

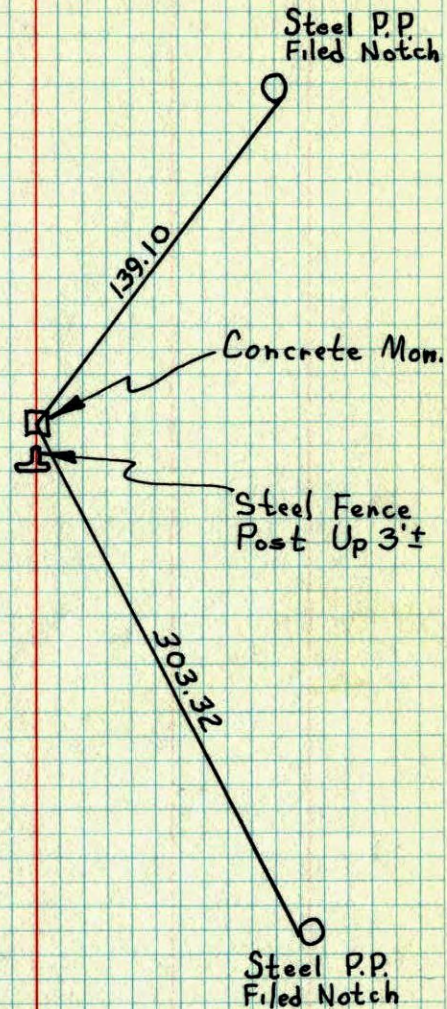
N+W  
6" cottonwood

N+W  
24" elm

SE. cor. Sec. 22 T31 R24  
 Transit Ties for Construction.

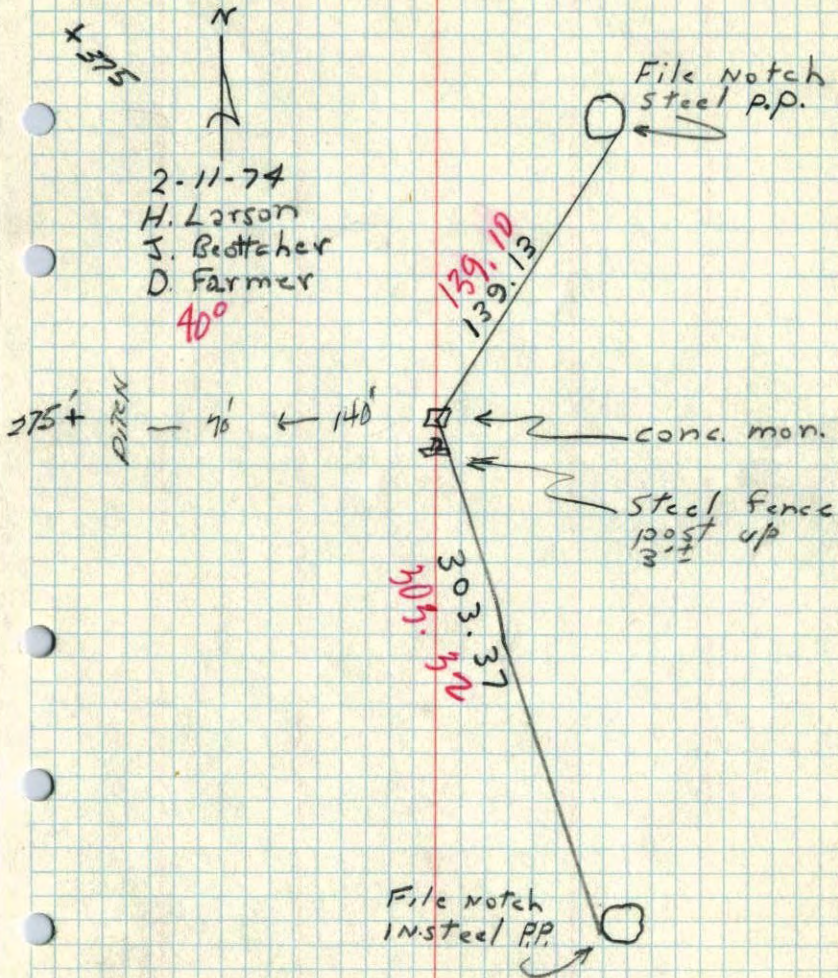


S.E. Cor. Sec. 22-T31-R24  
 Additional Ties For Construction.



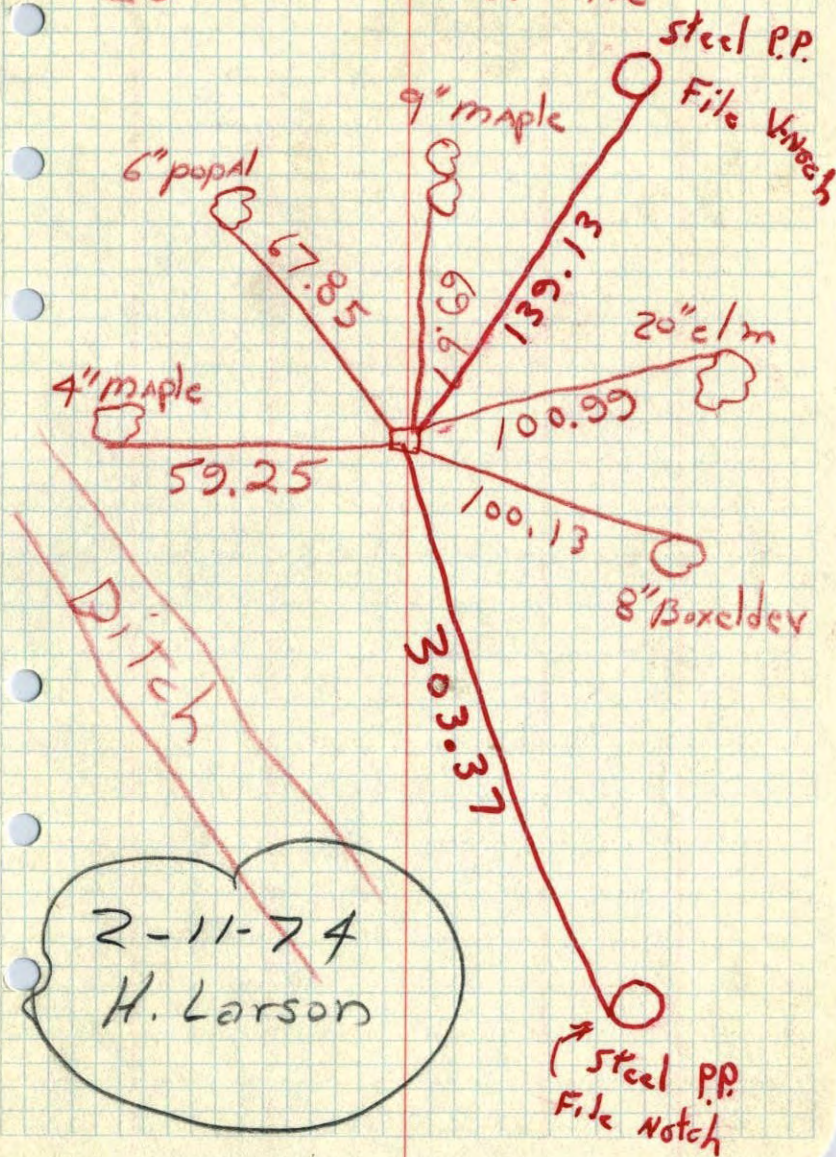
SE cor. Sec. 22 T31 R24

Took Additional Ties for construction.



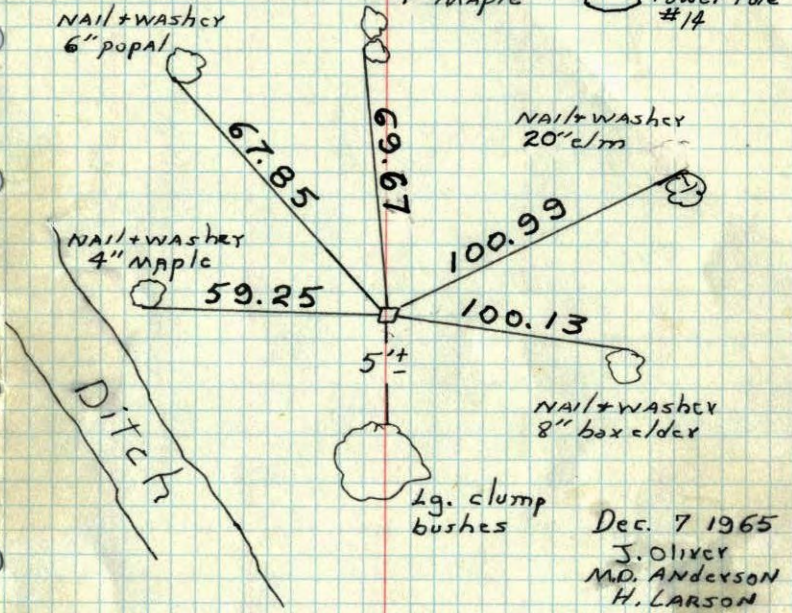
S.E. Cor. Sec 22 - T31 - R24

25' W. of Powerline



S.E. Cor. Sec. 22 T31 R24

Found conti. monument with top broken  
off up 0.2'. set steel fence post 0.5' So.  
and up. 3'. Oliver, Livegard + Dunlop.  
25± West of Power Line. Nail + washer  
9" Maple ○ Power Pole #14



Dec. 7 1965  
J. Oliver  
M.D. ANDERSON  
H. LARSON

Tie Check  
July 14, 1966  
H. Larson  
D. Potter  
B. Reimer

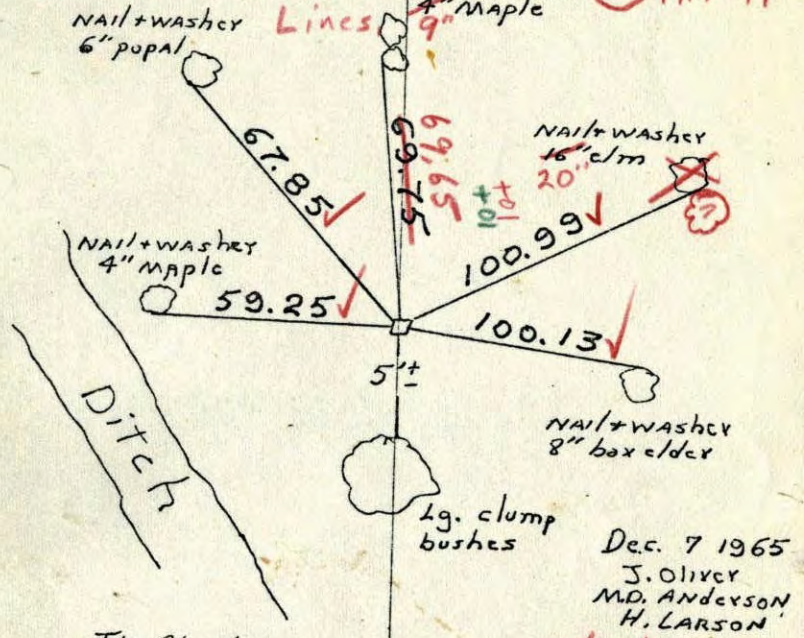
July 31, 1970  
D. Powell  
R. Brien

TEMPERATURE CORRECTED AND HORIZONTALLY TAPED MEASUREMENTS  
ROLAND W. ANDERSON  
COUNTY SURVEYOR  
ANOKA COUNTY, MINNESOTA

X

S.E. Cor. Sec. 22 T31 R24

Found conti. monument with top broken  
off up 0.2'. set steel fence post 0.5' So.  
and up. 3'. Oliver, Livegard + Dunlop.  
25± West of Power Lines Nail + washer  
9" Maple ○ P.P. #14



Dec. 7 1965  
J. Oliver  
M.D. ANDERSON  
H. LARSON

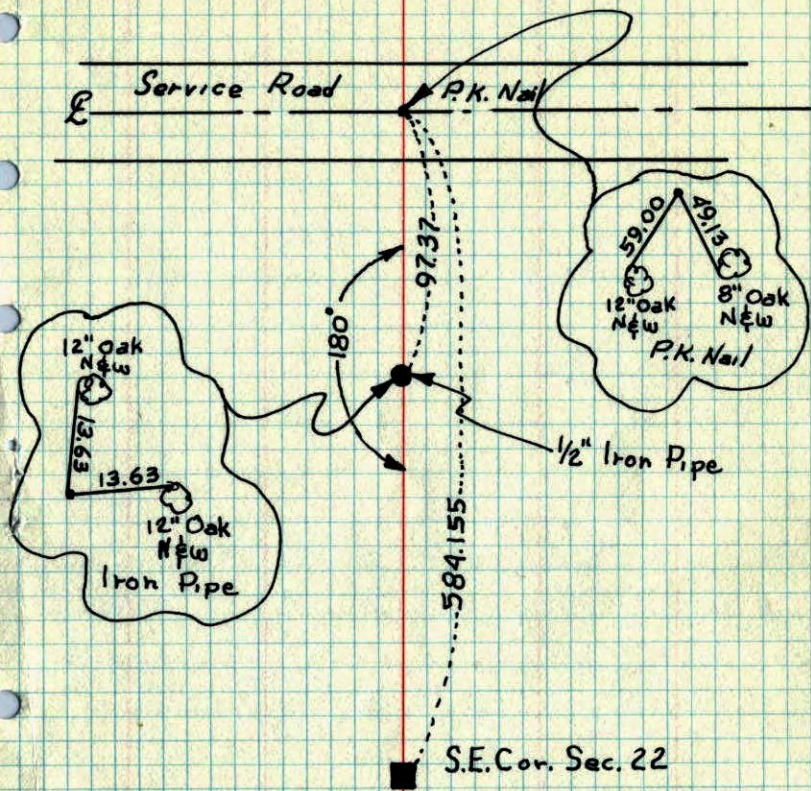
Tie Check  
July 14, 1966  
H. Larson  
D. Potter  
B. Reimer

7/31/70  
#10-88 ✓  
D. Powell  
R. Brien

TEMPERATURE CORRECTED AND HORIZONTALLY TAPED MEASUREMENTS  
ROLAND W. ANDERSON  
COUNTY SURVEYOR  
ANOKA COUNTY, MINNESOTA

S.E. Cor. Sec. 22-T31-R24

Transit Ties For Construction.

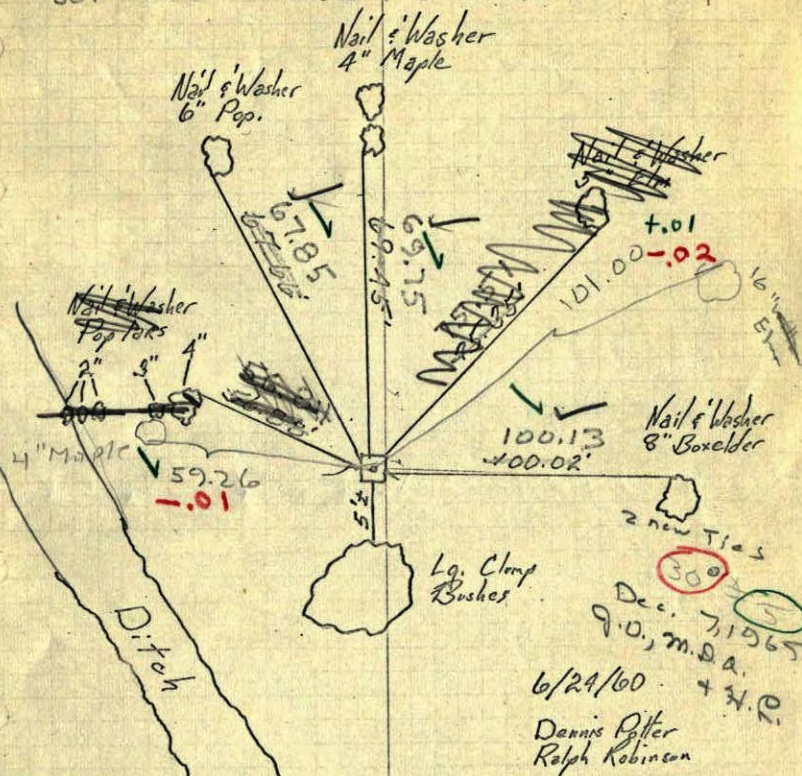


75

SE Cor. of Sec. 22, T31, R24

Conc. Mon. up 1.5'

22 July 64 Oliver Livgard-Dunlop  
Found Concr. with top broken off (up 2')  
Set Steel Fence Post 0.5' So. and up 3'



TEMPERATURE CORRECTED  
AND HORIZONTALLY  
TAPED MEASUREMENTS

ROLAND W. ANDERSON  
COUNTY SURVEYOR

2 new Ties  
Dec. 7, 1965  
9.0, m.s.d.  
6/24/60 + 3.0  
Dennis Potter  
Ralph Robinson



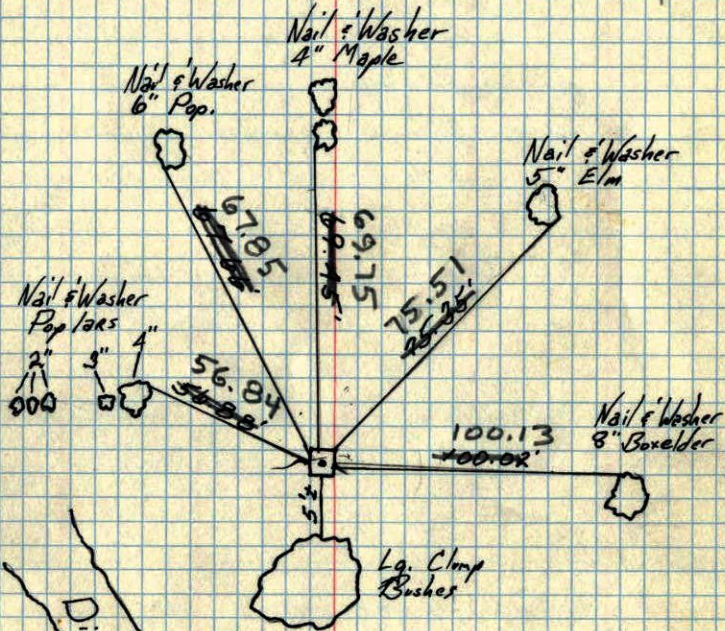
SE Cor. of Sec. 22, T31, R24

Conc. Mon. up 1.5'

22 July 64 Oliver-Livaard-Dunlap

Found Conc. with top broken off (up 0.2')

Set Steel Fence Post 0.5' So. and up 3'



6/29/60

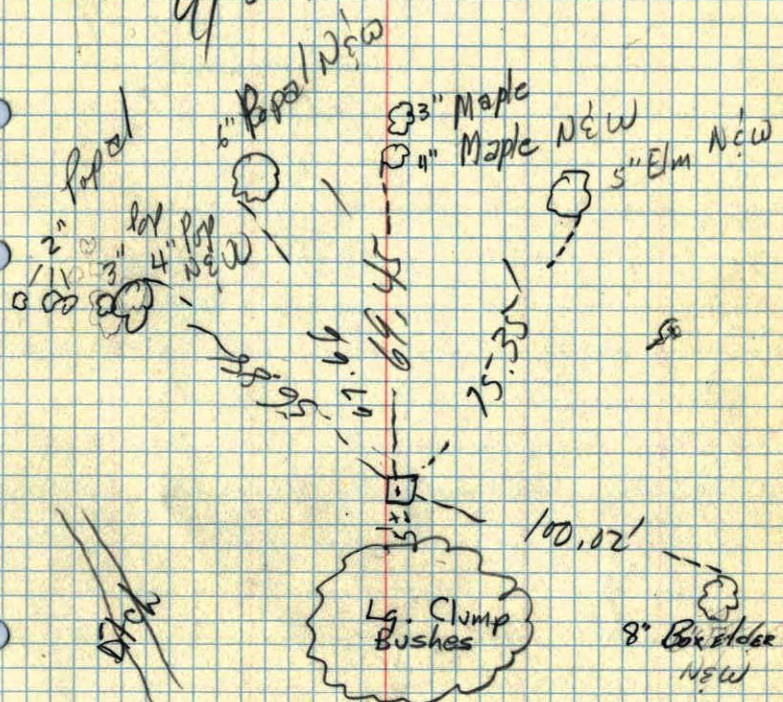
Dennis Potter  
Ralph Robinson

TEMPERATURE CORRECTED  
AND HORIZONTALLY  
TAPED MEASUREMENTS

ROLAND W. ANDERSON  
COUNTY SURVEYOR  
ANOKA COUNTY, MINNESOTA

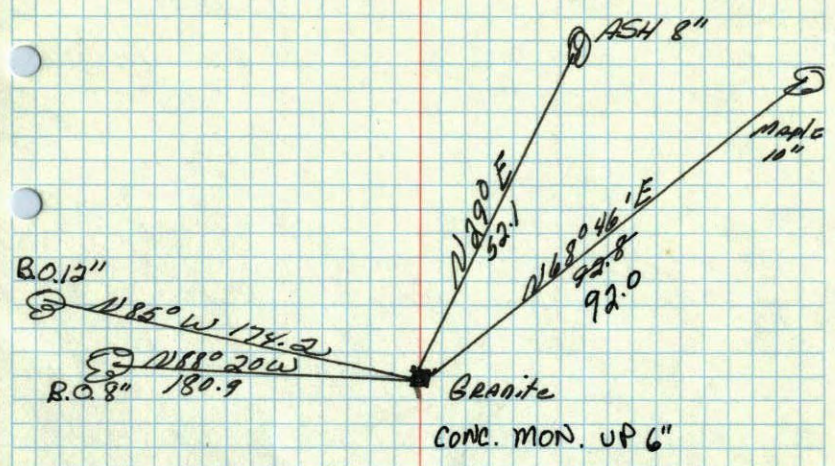
46408.3 SE<sup>corn</sup> Sec 22 T31 R24

6/24/68



~~6/29/60~~  
RR

SE corner of Sec. 22 T 31 N R 24 W  
Concrete Monument Flash



RETIED by  
MINDER ENG. CO.  
July 1957

July 6, 1943  
Cartwright