

CERTIFICATE OF LOCATION OF GOVERNMENT CORNER

County of Anoka

State of Minnesota

SOUTH $\frac{1}{4}$ Corner of Sec. 22 Township 31 Range 24

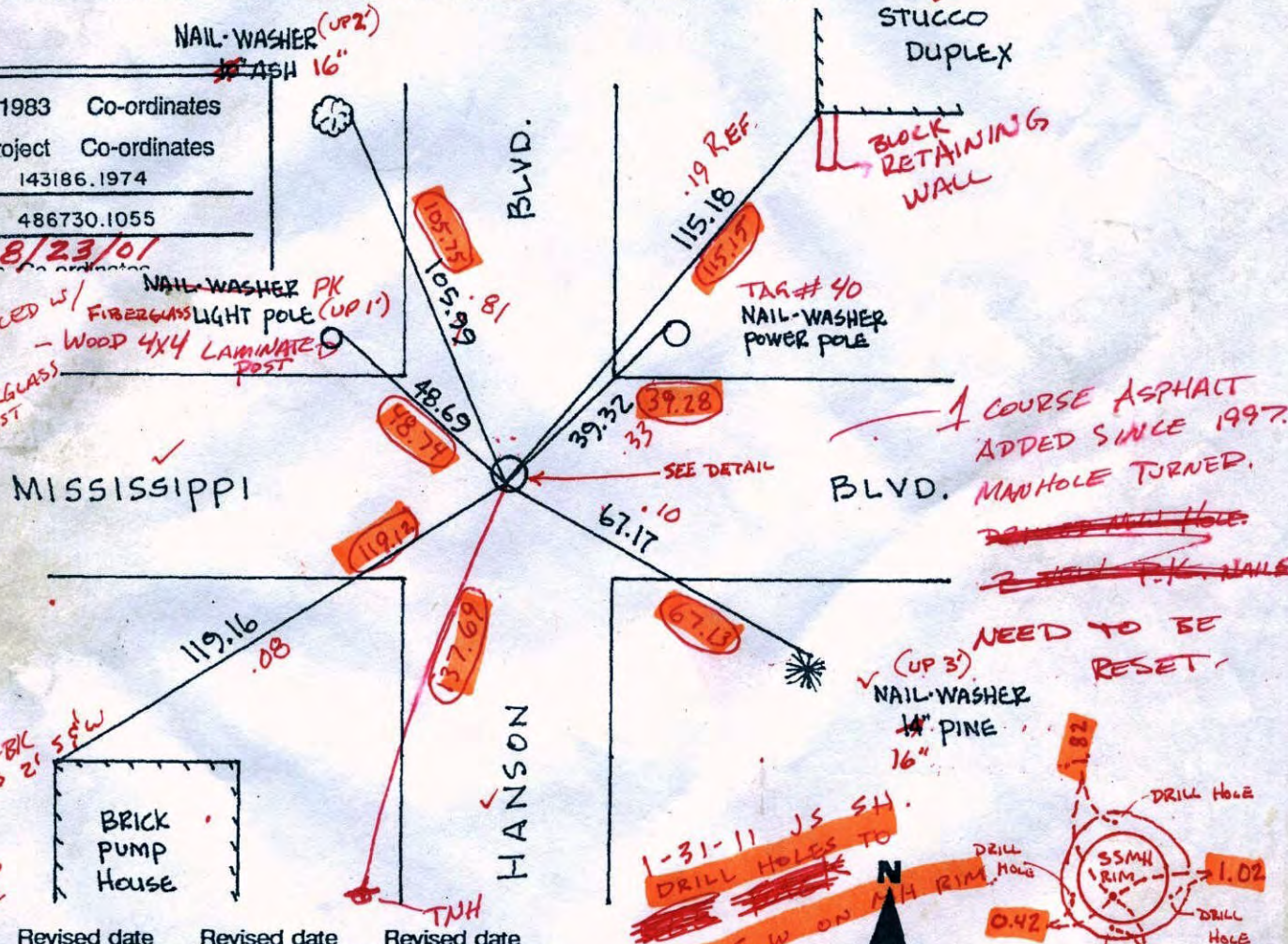
I hereby certify that on the 26TH day of July, 1960, I found the described corner which was evidenced by (CORNER) $\frac{3}{8}$ " HOLE IN MANHOLE COVER

and I further certify that to perpetuate the location of said corner, I did, at the exact location thereof, place a permanent marker consisting of CORNER FALLS ON MANHOLE COVER
P.K.'S 2' S. & W.

which reference or witness monuments are located in the manner following:

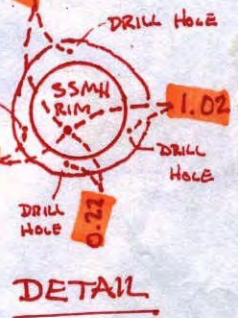
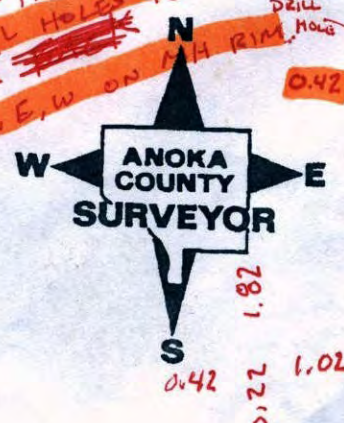
1-31-11
VRS COORDS
TO SET POS.
ON M.H.
143186.235
486730.085

N.A.D.	1983	Co-ordinates
County	Project	Co-ordinates
Northing	143186.1974	
Easting	486730.1055	
8/23/01		



12/23/10
JS-SH-BIL
SET PK'S 2' S&W
1/3/11
STATIC
CORNER

Revised date	Revised date	Revised date
6.17.86		
8.15.94		
10.10.97		



1-31-11 JS SH.
DRILL HOLES TO
N, S, E, W ON M.H. RIM

CERTIFICATE OF LOCATION OF GOVERNMENT CORNER

County of Anoka

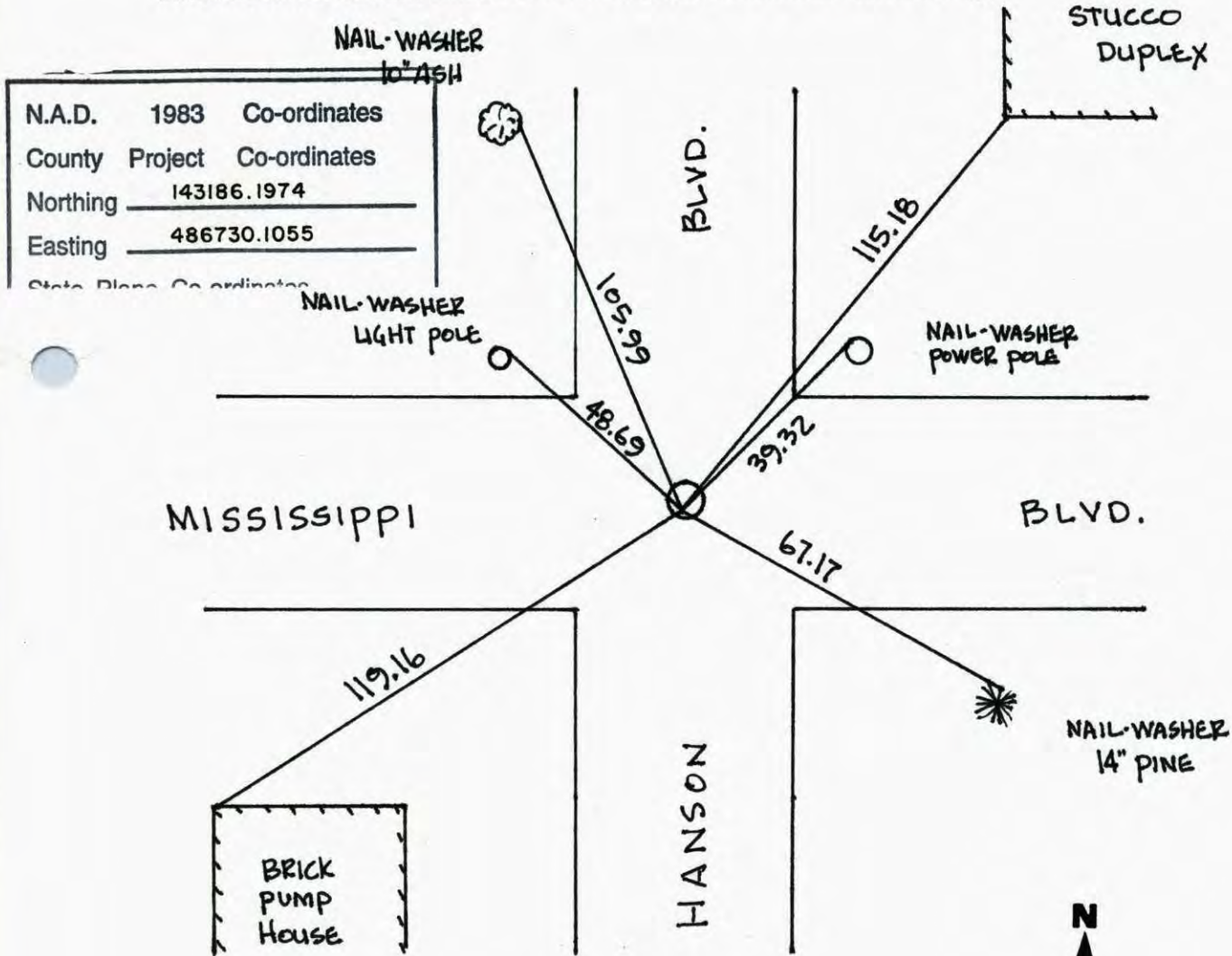
State of Minnesota

SOUTH 1/4 Corner of Sec. 22 Township 31 Range 24

I hereby certify that on the 26TH day of July, 19 60, I found the described corner which was evidenced by (CORNER) 3/8" HOLE IN MANHOLE COVER

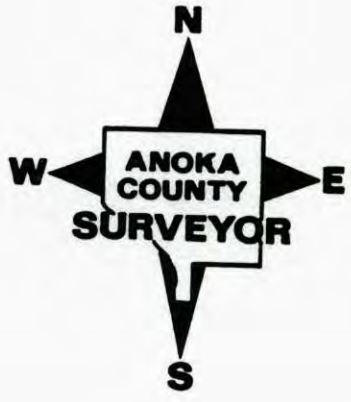
and I further certify that to perpetuate the location of said corner, I did, at the exact location thereof, place a permanent marker consisting of CORNER FALLS ON MANHOLE COVER
P.K.'S 2' S. & W.

which reference or witness monuments are located in the manner following:



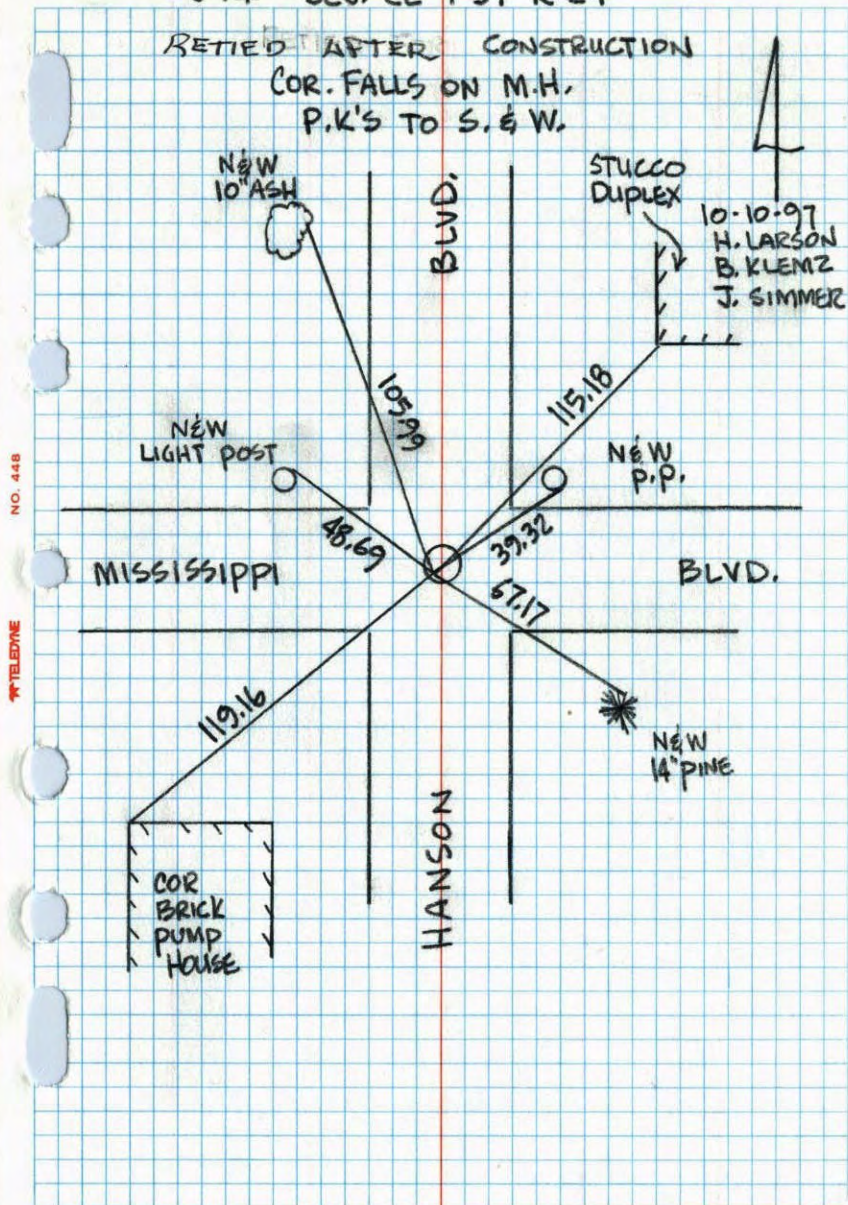
N.A.D.	1983	Co-ordinates
County	Project	Co-ordinates
Northing	143186.1974	
Easting	486730.1055	
State Plane	Co-ordinates	

Revised date	Revised date	Revised date
6.17.86		
8.15.94		
10.10.97		



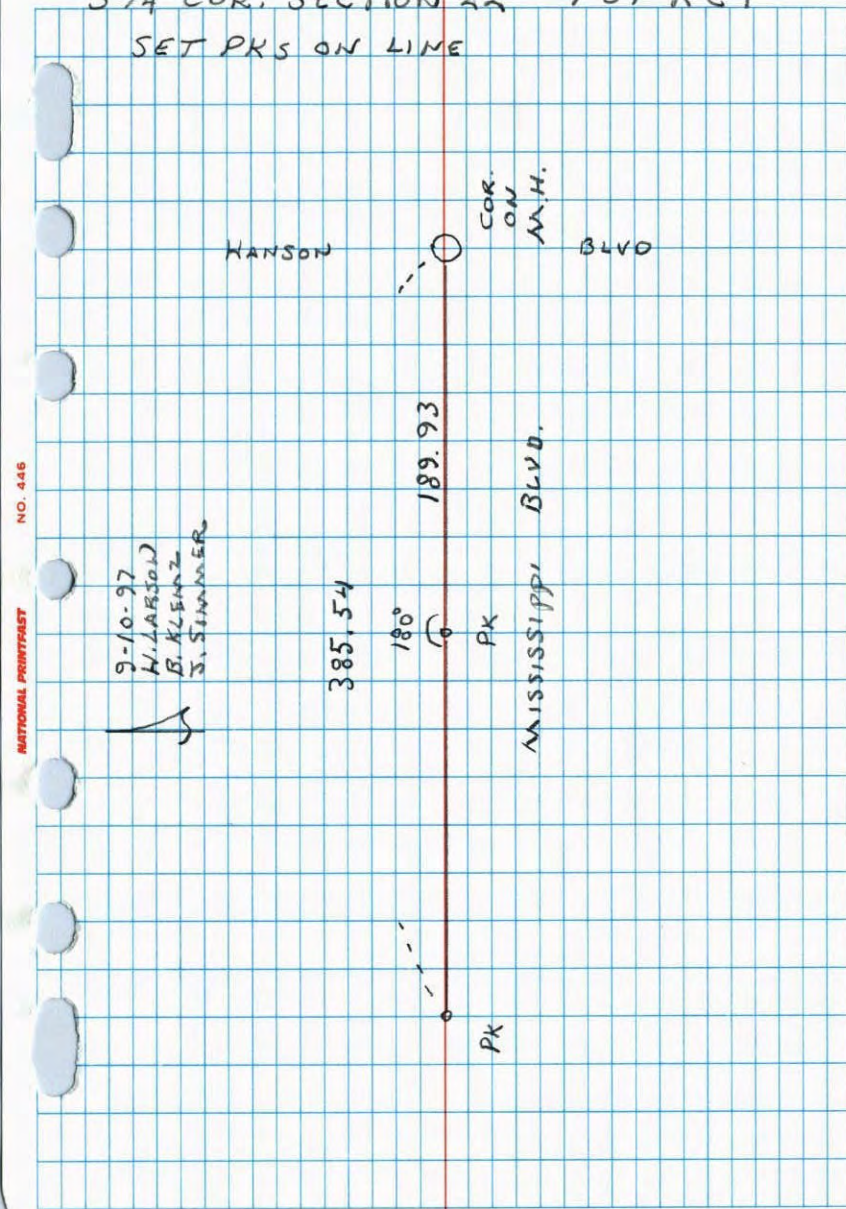
S 1/4 SEC. 22 T31 R 24

RETIED AFTER CONSTRUCTION
COR. FALLS ON M.H.
P.K.'S TO S. & W.



S 1/4 COR. SECTION 22 T31 R24

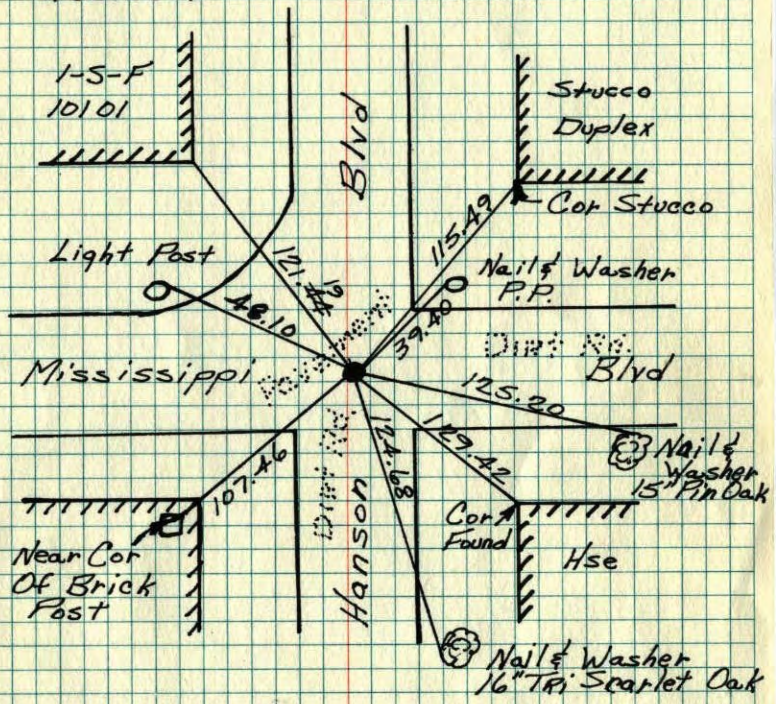
SET PK'S ON LINE



S 1/4 Cor Sec 22-T31-R24

Corner Falls On 3/8" Hole Drilled In Manhole Cover. PK's Placed N+W 2.0'±

July 26, 1960	Tie Check
Temp 85°	July 16, 1974
Giddings	R. Farmer
Potter	N. Dahl
Robinson	D. Dahl



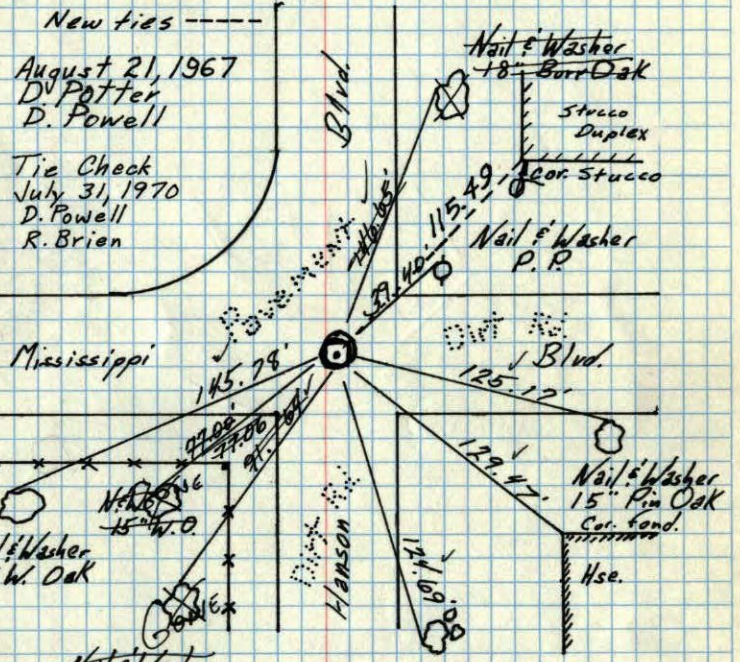
TIE CHECK
7-3-80
B. STEPHENS
P. ROSS
P. HORNBY

ROLAND W. ANDERSON COUNTY SURVEYOR ANOKA COUNTY, MINNESOTA
TEMPERATURE CORRECTED AND HORIZONTALLY TAPED MEASUREMENTS

S 1/4 Cor. Sec 22-T31-R24

Conc. Mon. down 1/2" Corner Iron Pipe to North falls on flush with Mon. 3/8" hole drilled in manhole cover. PK's placed N+W

Ties checked June 4, 1964
M.O. Anderson
R. Carlson



TEMPERATURE CORRECTED AND HORIZONTALLY TAPED MEASUREMENTS

ROLAND W. ANDERSON COUNTY SURVEYOR ANOKA COUNTY, MINNESOTA

7/26/60
Temp 95°
Giddings
Potter
Robinson

out
48703.9

(word)

in

48719.1

July 26, 1960

Temp 85°

R. Giddings

R. Robinson

D. Potter

1/4 Cor. Sec. 22, T31, R24

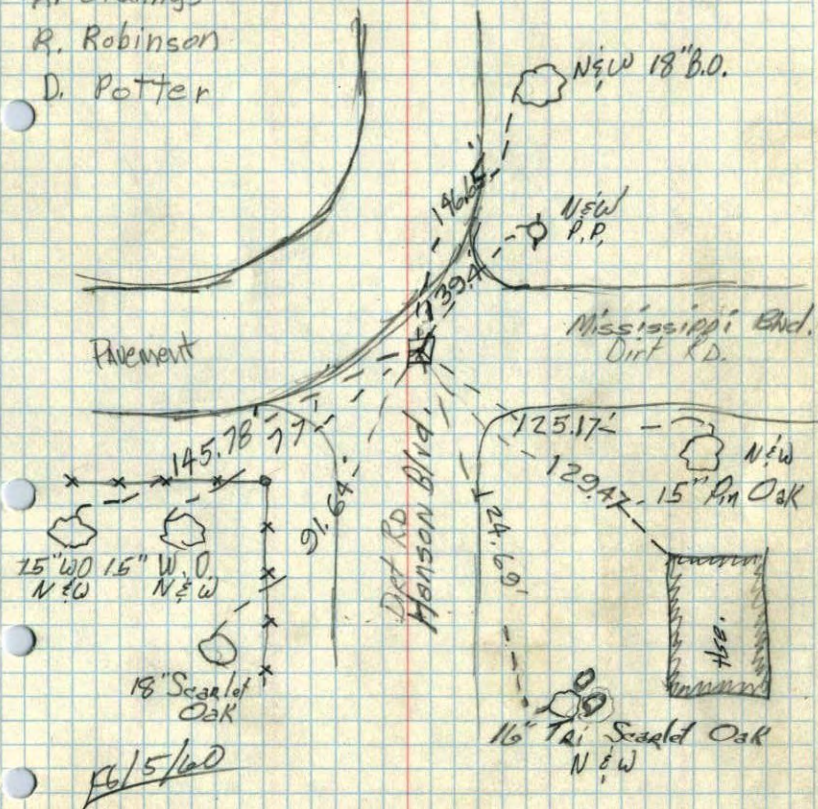
Conc. Mon. down 12"

Iron Pipe to North

flush with Mon.

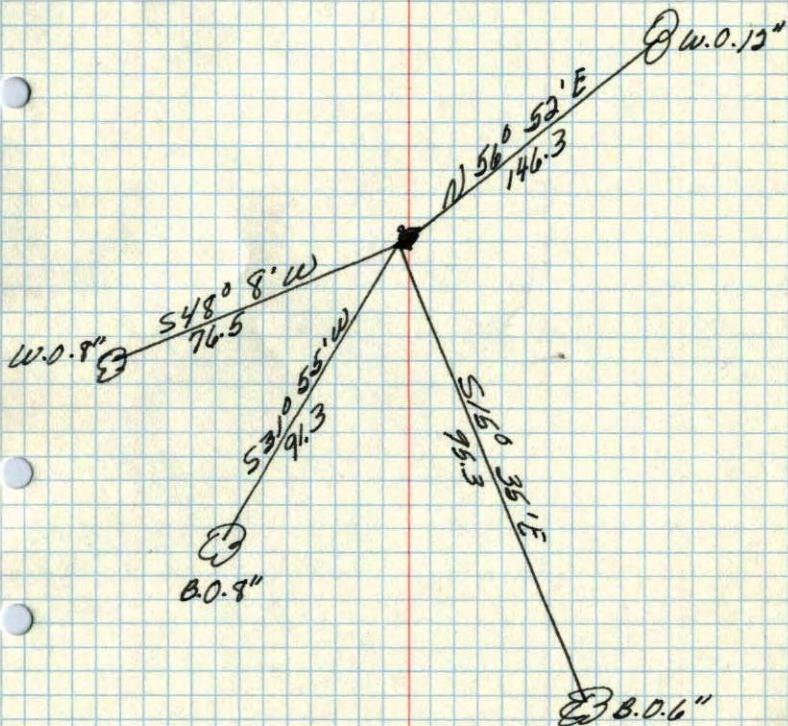
Iron Pipe over Center

flush



1/4 corner of Sec. 22 T31, R24

Concrete Monument



Nov. 7, 1944
Carter, right