

# CERTIFICATE OF LOCATION OF GOVERNMENT CORNER

County of Anoka

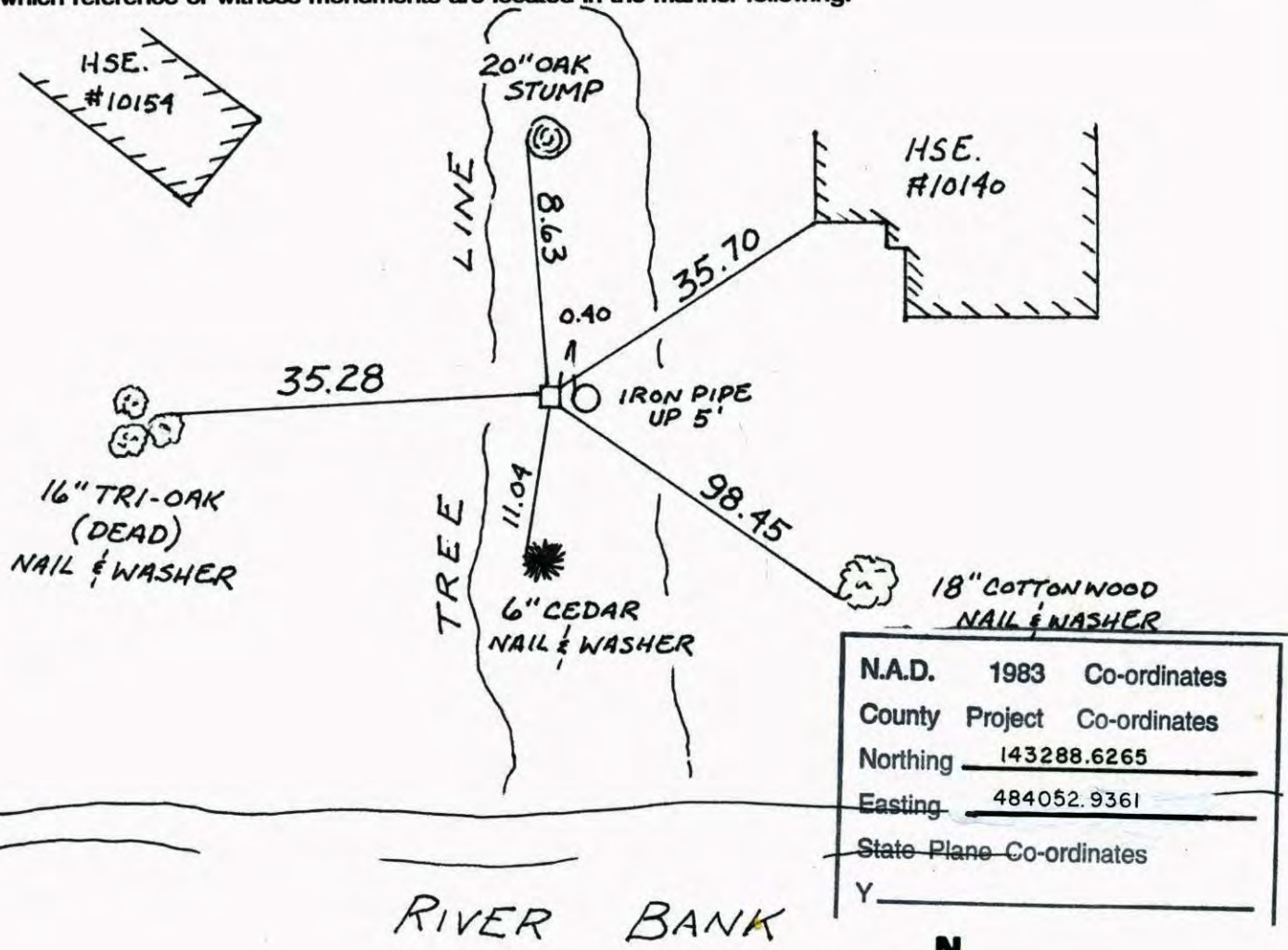
State of Minnesota

SOUTHWEST Corner of Sec. 22 Township 31 Range 24

I hereby certify that on the 26 day of JULY, 1960, I found the described corner which was evidenced by CONC. MON.

and I further certify that to perpetuate the location of said corner, I did, at the exact location thereof, place a permanent marker consisting of SAME

which reference or witness monuments are located in the manner following:

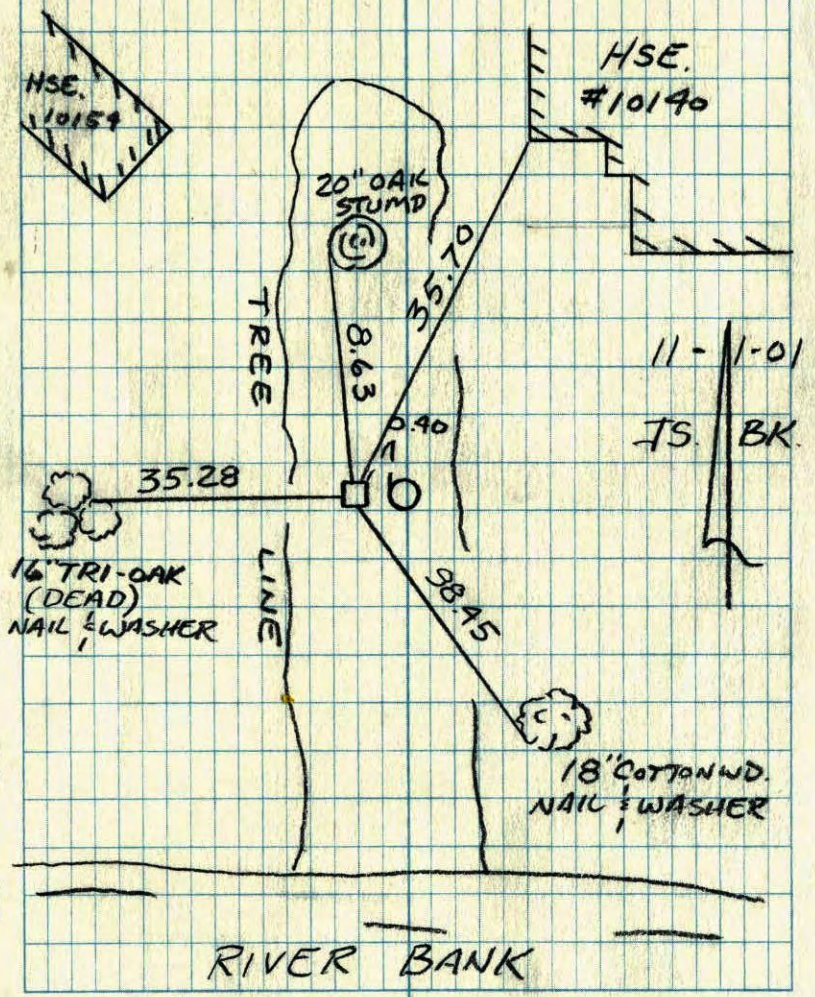


N.A.D.	1983	Co-ordinates
County	Project	Co-ordinates
Northing		<u>143288.6265</u>
Easting		<u>484052.9361</u>
State Plane Co-ordinates		Y <u>                    </u>

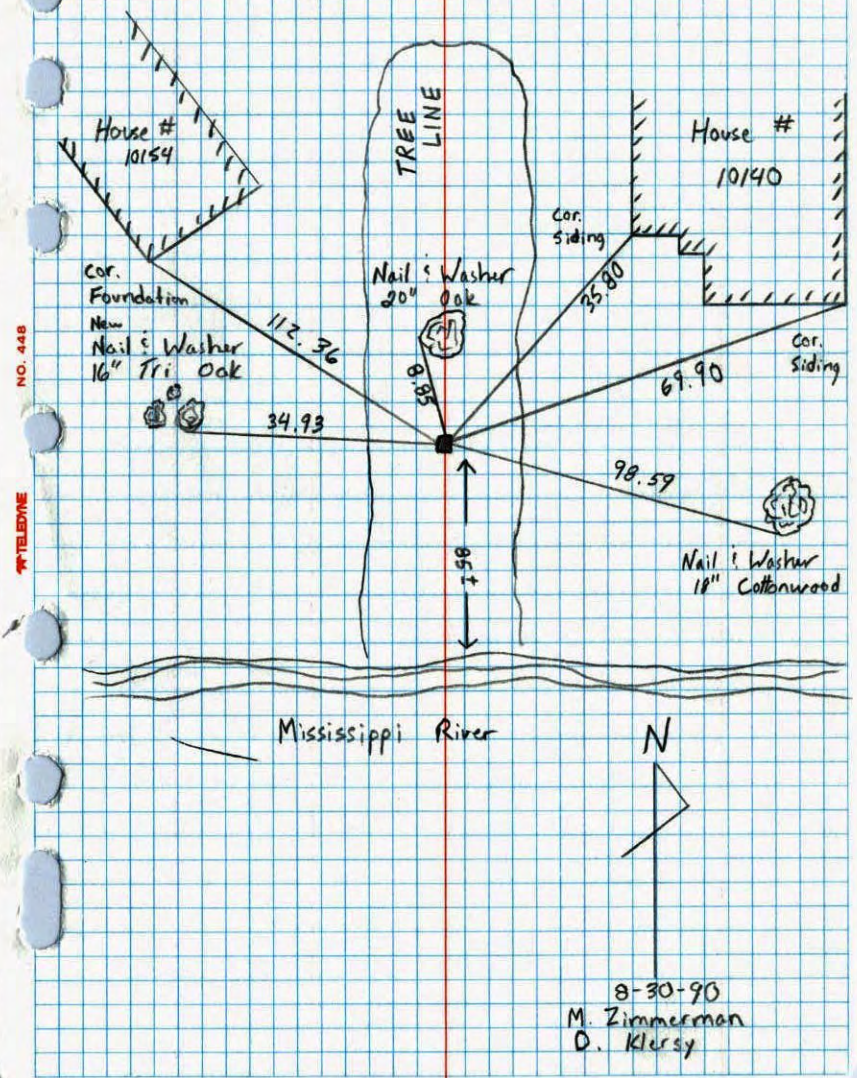
Revised date	Revised date	Revised date
<u>8-24-94</u>		
<u>11-1-01</u>		



SW COR. SEC 22 T31 R24  
RETIED GPS CONC. MON.



Southwest Corner Sec. 22 T31 R24  
Retied Concrete Monument

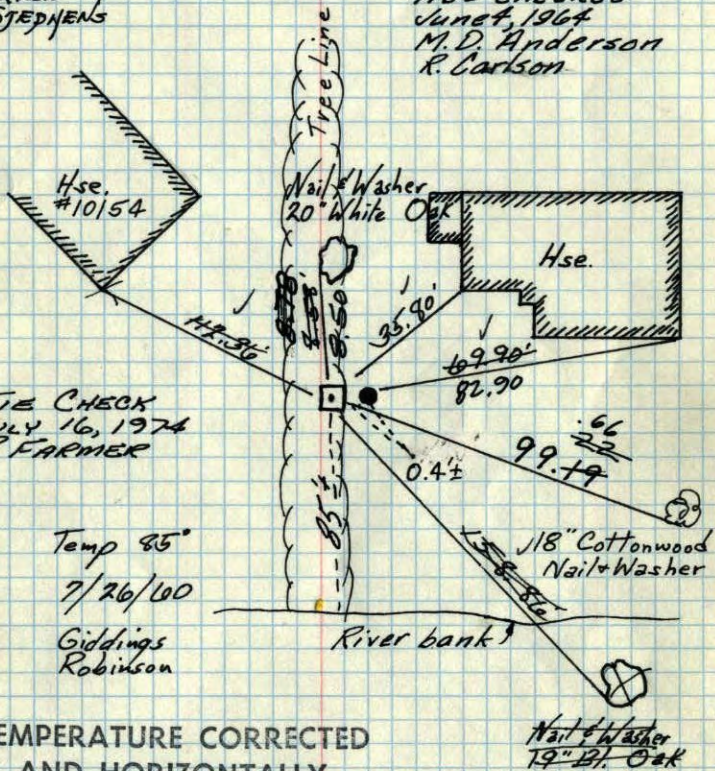


SW Cor. Sec 22-T31-R24

Conc. 2 1/2" Mon. Flush I.P. .4' to East up 5'±

TIE CHECK  
JUNE 23, 1977  
R. SANJERUD  
S. BRIEN  
J. STEPHENS

Ties checked  
June 4, 1964  
M.D. Anderson  
R. Carlson



TIE CHECK  
JULY 16, 1974  
R. FARMER

Temp 85°  
7/26/00

Giddings  
Robinson

TEMPERATURE CORRECTED  
AND HORIZONTALLY  
TAPED MEASUREMENTS

ROLAND W. ANDERSON  
COUNTY SURVEYOR  
ANOKA COUNTY, MINNESOTA

Tie Check  
July 14, 1966  
H. Larson  
D. Potter  
Aug. 3, 1970

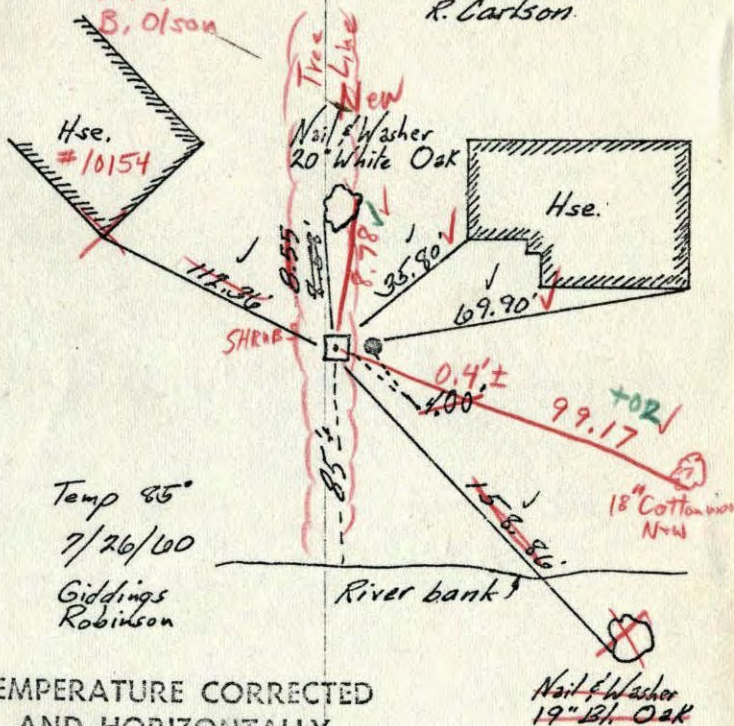
D. Powell  
R. Brien  
B. Olson  
TIE CHECK  
7-9-80  
S. STEPHENS  
P. ROSS  
P. HORNBY

SW Cor. Sec 22-T31-R24

Conc. 2 1/2" Mon. Flush I.P. .4' to East up 5'±

8/3/70  
#10-75  
D. Powell  
R. Brien  
B. Olson

Ties checked  
June 4, 1964  
M.D. Anderson  
R. Carlson



TEMPERATURE CORRECTED  
AND HORIZONTALLY  
TAPED MEASUREMENTS

ROLAND W. ANDERSON  
COUNTY SURVEYOR  
ANOKA COUNTY, MINNESOTA

Tie Check  
July 14, 1966  
H. Larson  
D. Potter

S.W. Corn. Sec. 22, T. 31, R. 24.

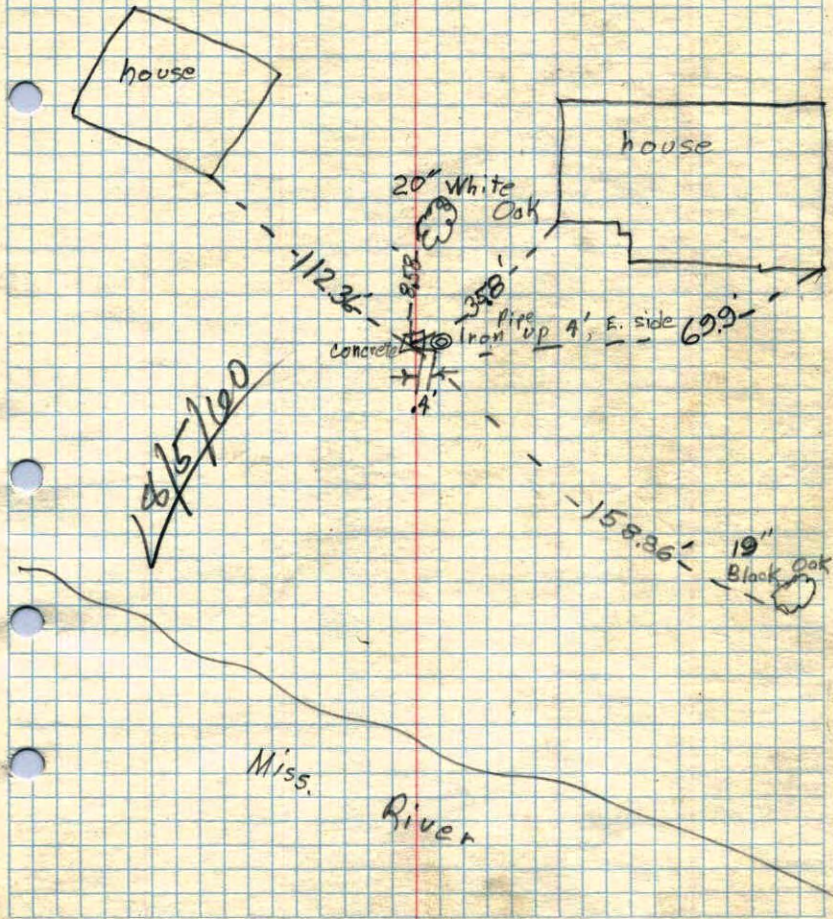
Concrete Flush

July 26, 1960

Temp 85°

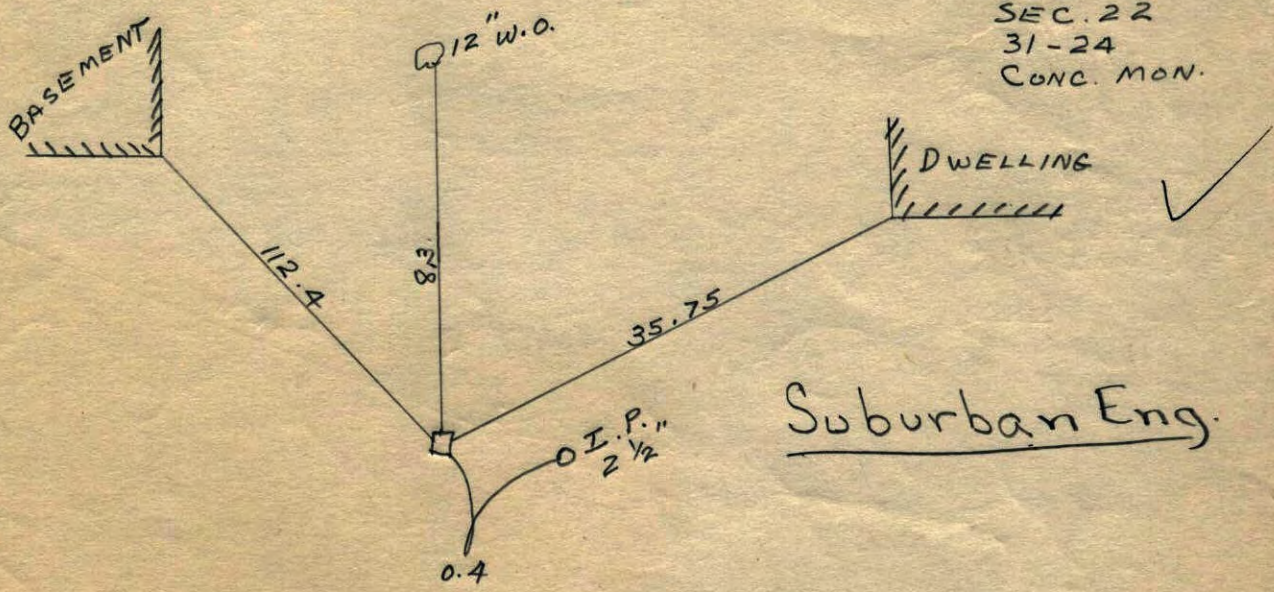
R. Giddings

R. Robinson



~~8/5/1960~~

21	22
28	27

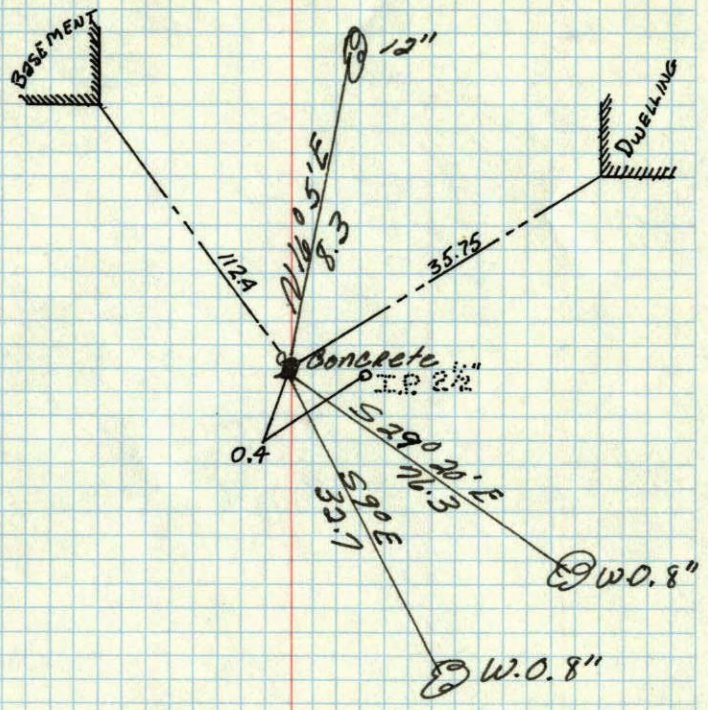


SW COR  
SEC. 22  
31-24  
CONC. MON.

Suburban Eng.

3/17/54

SW corner of Sec. 22 T31. R. 24  
Concrete Monument flush



HOIUM  
3/17/59

Nov 18, 1944  
Coetwright