

CERTIFICATE OF LOCATION OF GOVERNMENT CORNER

County of Anoka

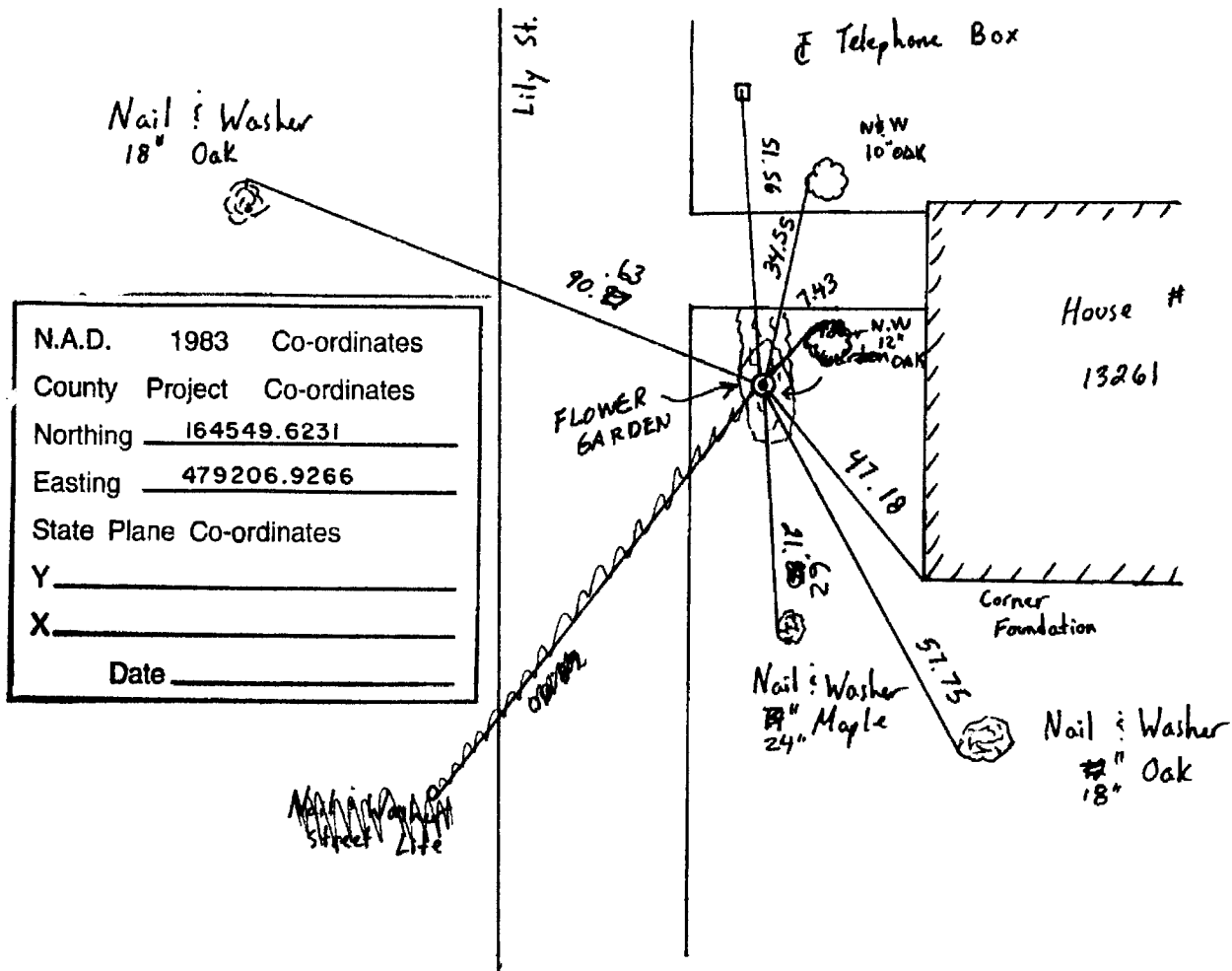
State of Minnesota

Northwest Corner of Sec. 4 Township 31 Range 24

I hereby certify that on the 2 day of August, 1960, I found the described corner which was evidenced by Concrete Monument

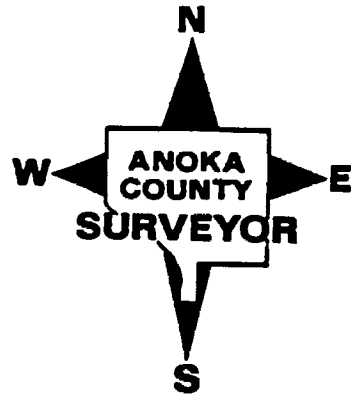
and I further certify that to perpetuate the location of said corner, I did, at the exact location thereof, place a permanent marker consisting of Cast Iron Monument
FALLS 1'± W. OF CEDAR TREE BASE

which reference or witness monuments are located in the manner following:

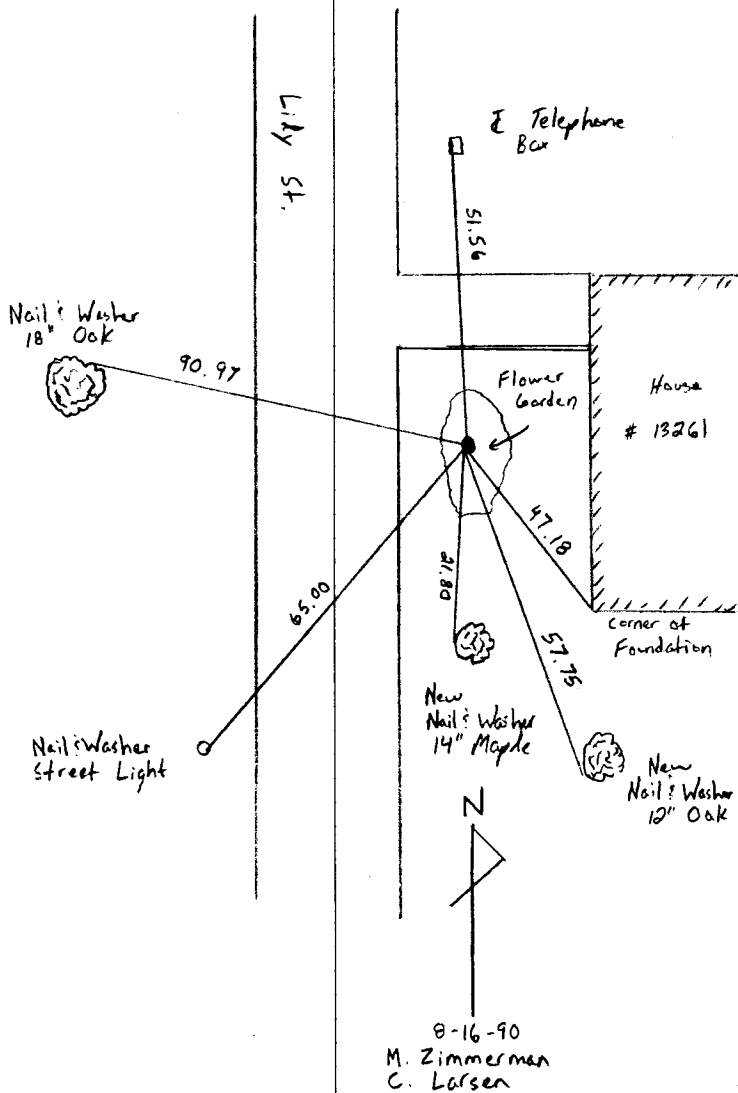


N.A.D.	1983	Co-ordinates
County Project		Co-ordinates
Northing	<u>164549.6231</u>	
Easting	<u>479206.9266</u>	
State Plane Co-ordinates	Y _____	
	X _____	
Date	_____	

Revised date	Revised date	Revised date
7-19-83		
11-9-83		
6-18-86		
8-16-90		
8-8-94		
11-16-00		



Northwest Corner Sec. 4 T31 R24
Retired Cast Iron Monument



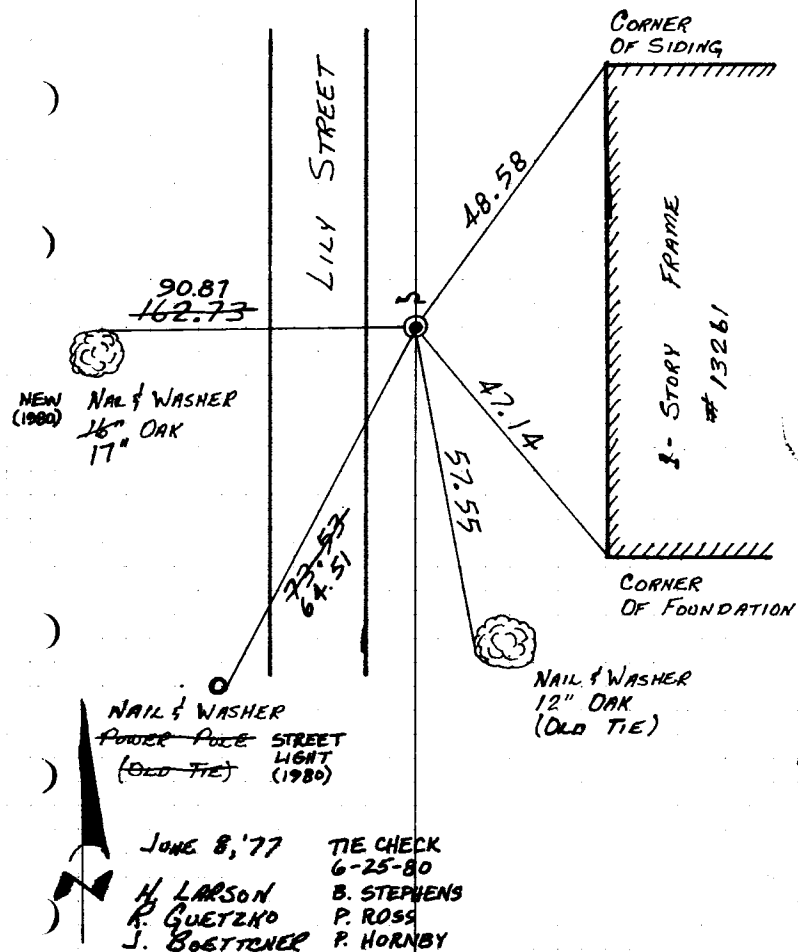
NO. 448

TELEPHONE

9

N.W. COR. SEC. 4, T31, R24

RAISED CAST IRON MONUMENT AND RETIED.
CAST IRON FLUSH WITH SIGN AND POST ON
NORTH SIDE.

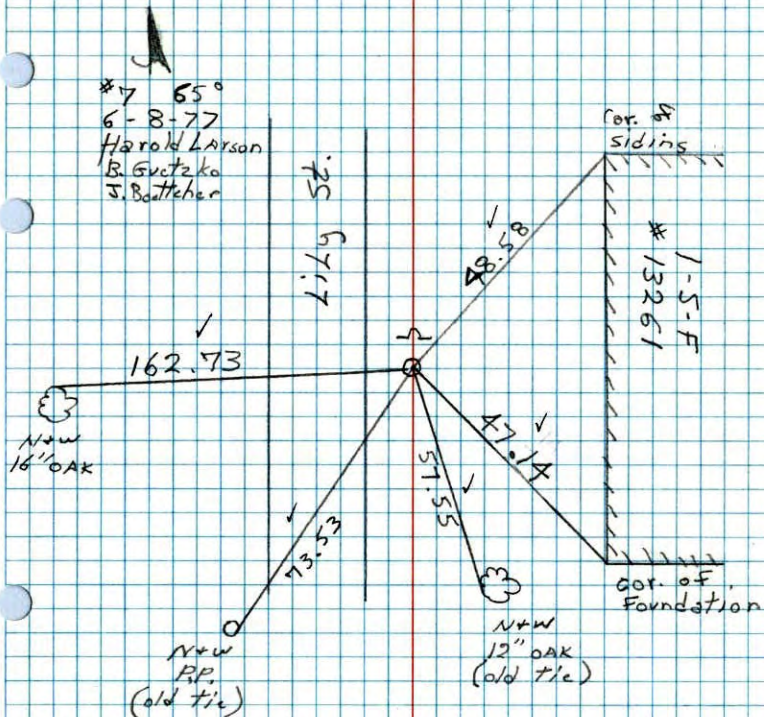


TEMPERATURE CORRECTED
AND HORIZONTALLY
TAPED MEASUREMENTS

ROLAND W. ANDERSON
COUNTY SURVEYOR
ANOKA COUNTY, MINNESOTA

NW Cor. Sec. 4 T31 R24

Raised cast iron monument and
retied cast iron flush with sign
and post on N. side



N.W. Cor. Sec. 4 - T31 - R24

Conc. Mon., Down 0.2', Iron on North Side

Set Cast Iron Mon.
Up 1'± With Warning
Sign 1'± North of
Monument

8/2/60

B. Giddings
K. Carlson

Tie Check

7/1/74

R. Farmer

N. D.

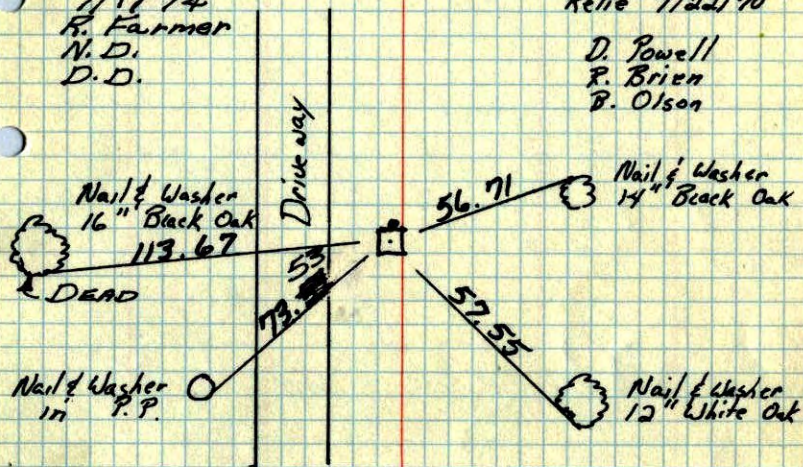
D. D.

Retie 7/22/70

D. Powell

R. Brien

B. Olson



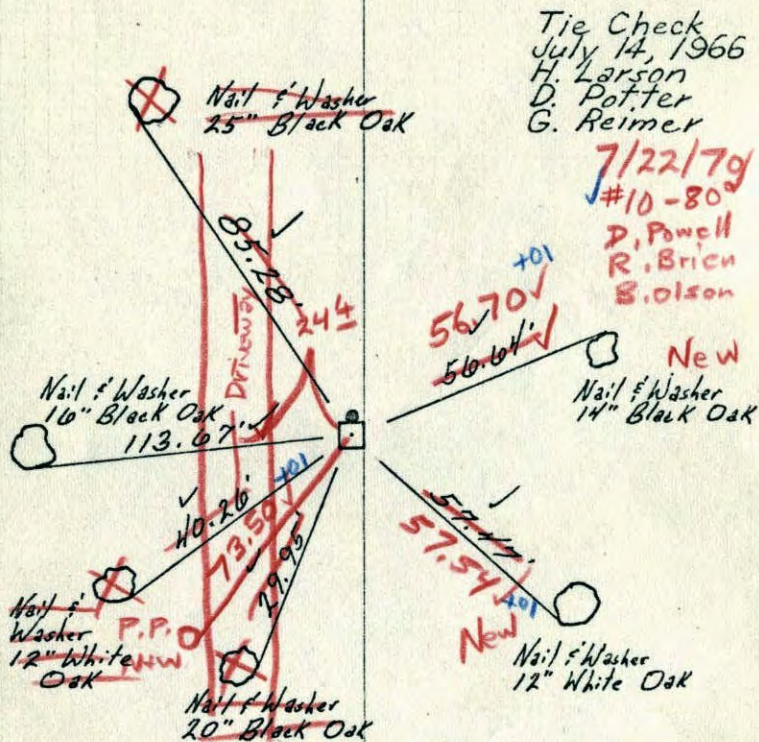
ROLAND W. ANDERSON
COUNTY SURVEYOR
'ANOKA COUNTY, MINNESOTA'

TEMPERATURE CORRECTED
AND HORIZONTALLY
TAPED MEASUREMENTS

NW Cor. Sec. 4 - T31 - R24

Conc. Mon., Down 0.3' 0.2±

Iron on North Side



Tie Check
July 14, 1966
H. Larson
D. Potter
G. Reimer

7/22/79
#10-80

D. Pouch
R. Brich
S. Olson

New
Nail & Washer
14" Black Oak

Nail & Washer
12" White Oak

8/2/60

R. Giddings
R. Carlson

Retie 6/8/64

M. D. Anderson
R. Carlson

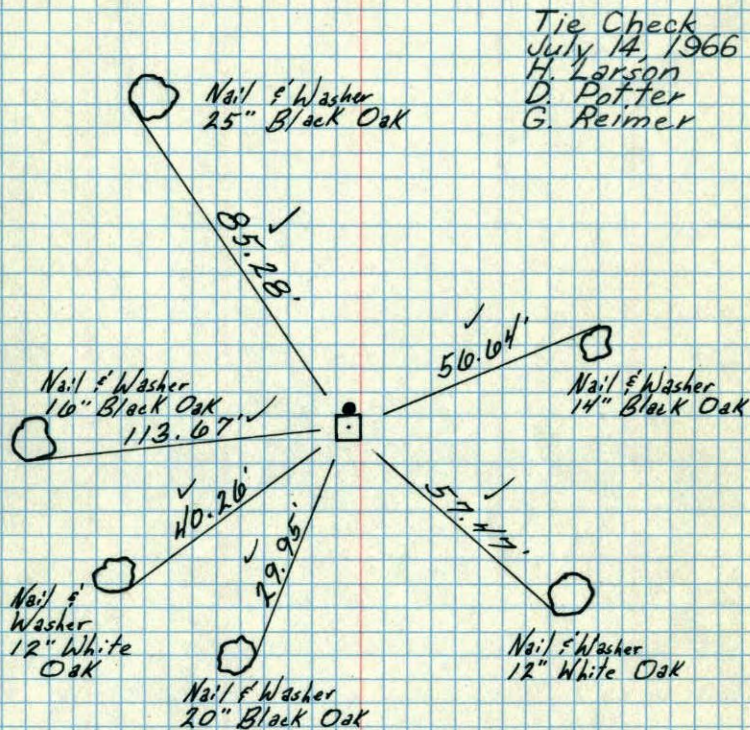
TEMPERATURE CORRECTED
AND HORIZONTALLY
TAPED MEASUREMENTS

ROLAND W. ANDERSON
COUNTY SURVEYOR
ANOKA COUNTY, MINNESOTA

NW Cor. Sec. 4 - T31 - R24

Conc. Mon., Down 0.3'

Iron on North Side



Tie Check
July 14, 1966
H. Larson
D. Potter
G. Reimer

Nail & Washer
25" Black Oak

Nail & Washer
16" Black Oak
113.67

Nail & Washer
14" Black Oak

Nail & Washer
12" White
Oak

Nail & Washer
20" Black Oak

Nail & Washer
12" White Oak

8/2/60

R. Giddings
R. Carlson

Retie 6/8/64

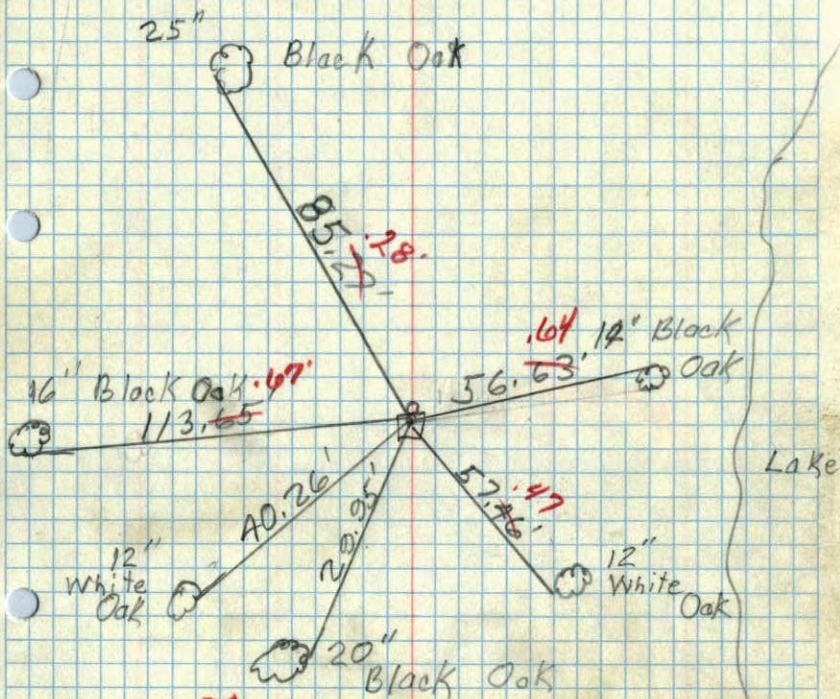
M. D. Anderson
R. Carlson

TEMPERATURE CORRECTED
AND HORIZONTALLY
TAPED MEASUREMENTS

ROLAND W. ANDERSON
COUNTY SURVEYOR
ANOKA COUNTY, MINNESOTA

N.W. Corn. Sec. 4 T.31, R.24

Concrete Mon.
Iron on North Side



TC
Aug. 2, 1960

Temp 90°

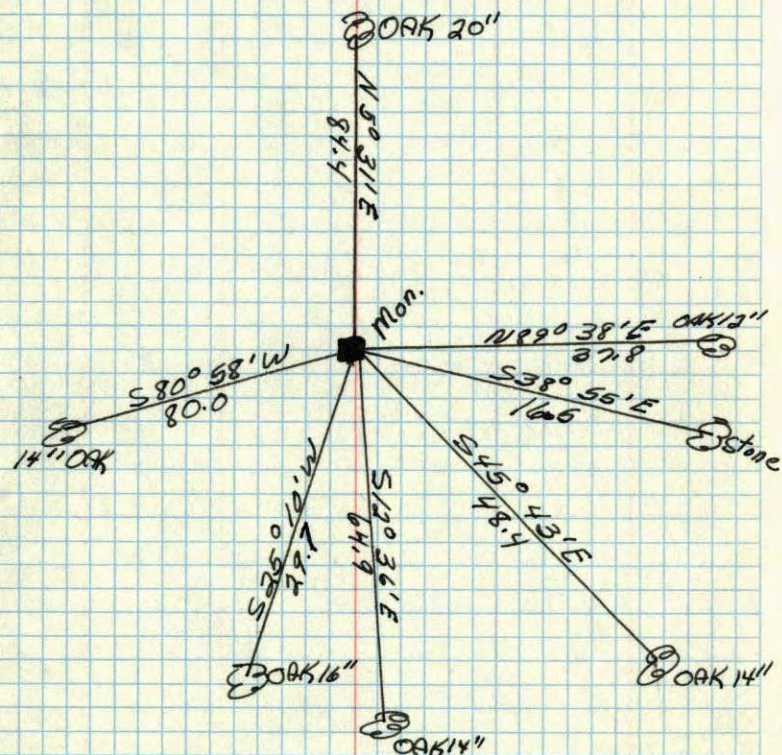
R. Giddings

R. Carlson

19/16/60

N.W. Corner of Sec. 4 T.31, R.24

Cement Mon. down 3"



July 31, 1944
H. D. Cartwright