

CERTIFICATE OF LOCATION OF GOVERNMENT CORNER

County of Anoka

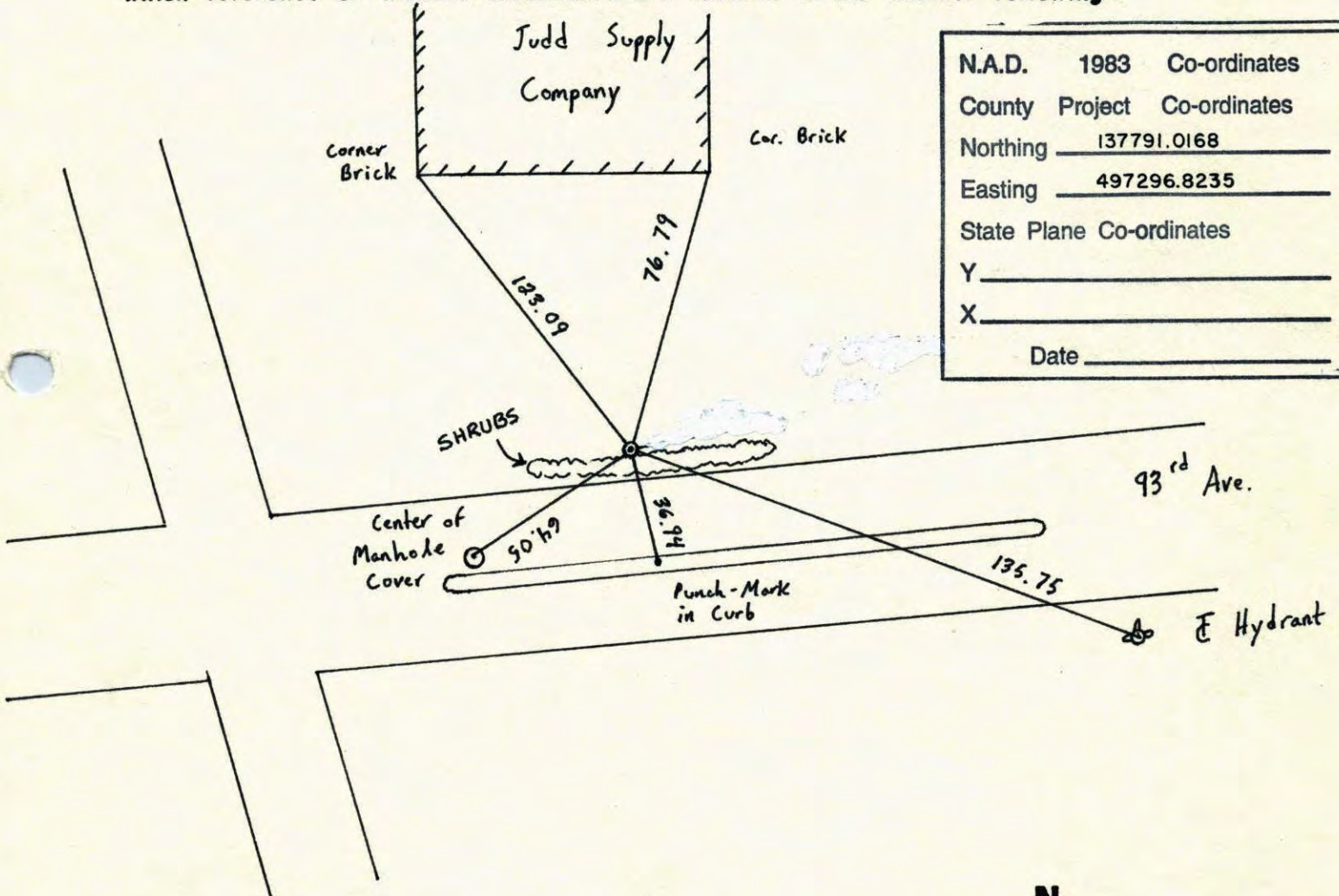
State of Minnesota

South 1/4 Corner of Sec. 25 Township 31 Range 24

I hereby certify that on the 4 day of Dec., 1964, I found the described corner which was evidenced by Concrete Monument

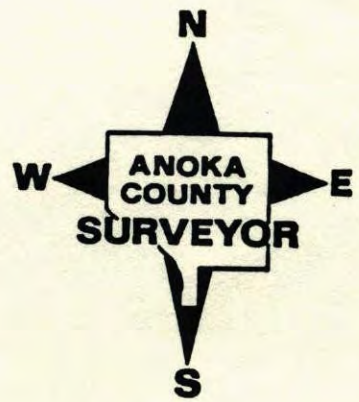
and I further certify that to perpetuate the location of said corner, I did, at the exact location thereof, place a permanent marker consisting of Cast Iron Monument

which reference or witness monuments are located in the manner following:



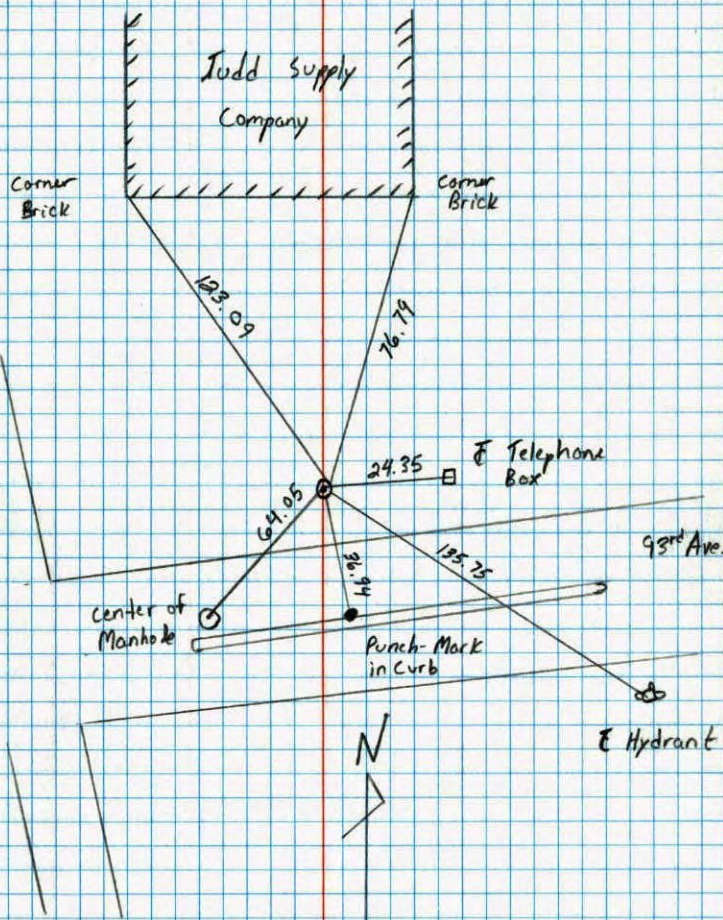
N.A.D.	1983	Co-ordinates
County Project		Co-ordinates
Northing	<u>137791.0168</u>	
Easting	<u>497296.8235</u>	
State Plane Co-ordinates	Y _____	
	X _____	
Date	_____	

Revised date	Revised date	Revised date
<u>6-13-86</u>		
<u>2-1-88</u>		
<u>8-16-90</u>		
<u>8-15-94</u>		



South 1/4 Corner Sec 25 T31 R24

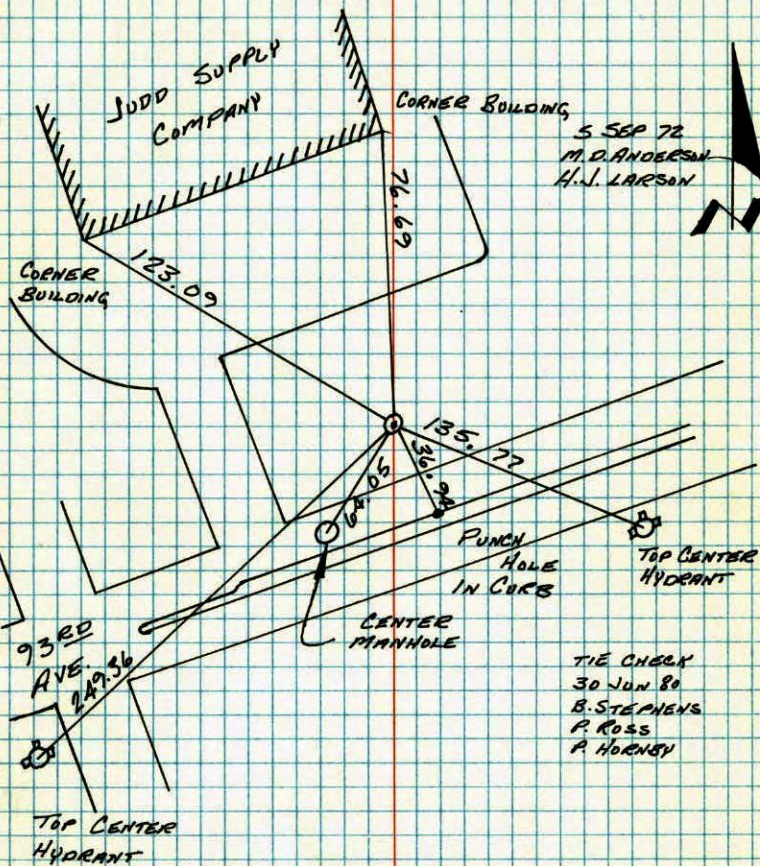
Retied Cast Iron Monument



8-16-90
M. Zimmerman
C. Larsen

S 1/4 SECTION 25 - T31 - R24

CAST IRON MONUMENT DOWN 1.3" ±. CAST IRON ABOUT 3.70" ± FROM EDGE OF CURB.



TIE CHECK
30 JUN 80
B. STEPHENS
P. ROSS
P. HORNBY

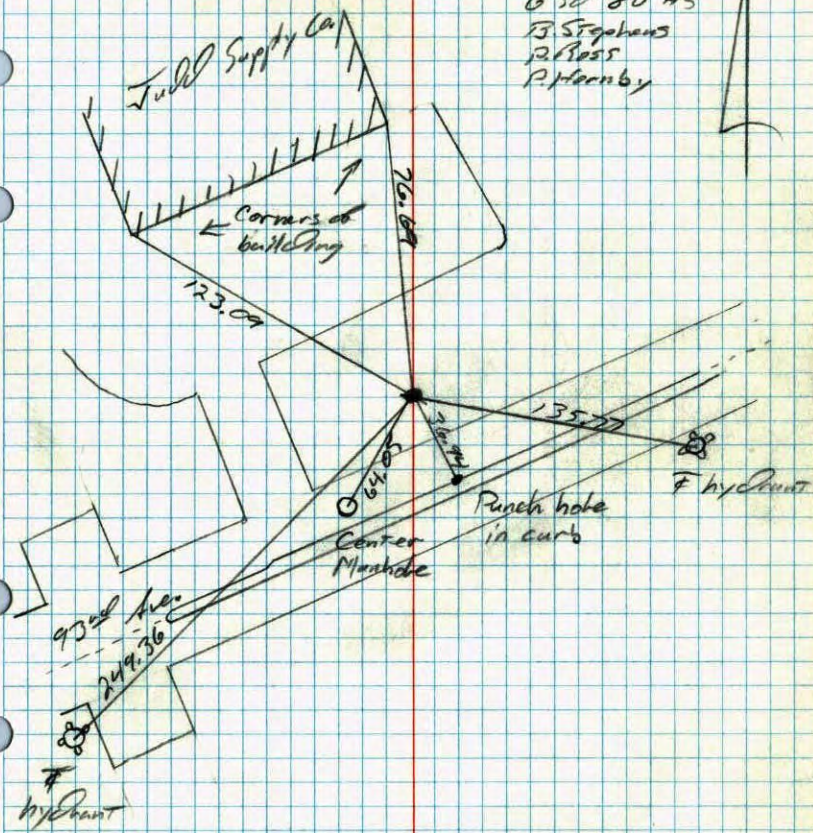
TEMPERATURE CORRECTED
AND HORIZONTALLY
TAPED MEASUREMENTS

ROLAND W. ANDERSON,
COUNTY SURVEYOR
ANOKA COUNTY, MINNESOTA

1/4 Cor. Sec. 25 T.31 R.24

Cast iron monument down 1.3'. About 3.70 from edge of curb.

6-30-80 MS
J. Stephens
R. Boss
P. Feenby



NO. 448

TELEPHONE

1/4 Cor. Sec. 25 T.31 R.24

Refound from transit ties by
Our Office

Cast Iron Monument down 1.4'
Monument fit transit ties

Sept. 5, 1972

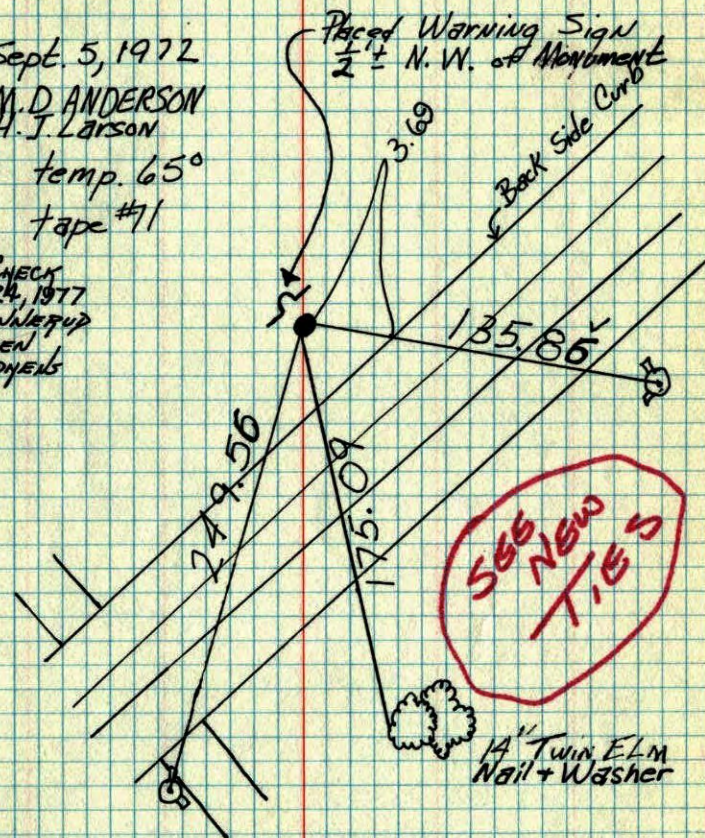
M. D. ANDERSON

H. J. Larson

temp. 65°

tape #1

TIE CHECK
JUNE 24, 1977
R. SPANLEFUP
J. BOHLEN
J. STEPHENS



TEMPERATURE CORRECTED
AND HORIZONTALLY
TAPED MEASUREMENTS

ROLAND W. ANDERSON
COUNTY SURVEYOR
ANOKA COUNTY, MINNESOTA

S 1/4 Cor. Sec 25-T31-R24

Lowered Cast Iron Monument down 1.0' ±
Took Transit ties.

Aug 5, 1970
D. Powell
R. Brien
B. Olson

Conc. Block Bldg.

Cor. of Conc. Blocks

TIE CHECK
JUNE 24, 1974
R. FARMER
S. BRIEN
J. STEPHENS

See Detail A.
TIE CHECK
JULY 18, 1974
R. FARMER
N. D.
D. D.

NEW TIES

548.08

3.69

Median

135.81

41' ±

CENTER MANHOLE

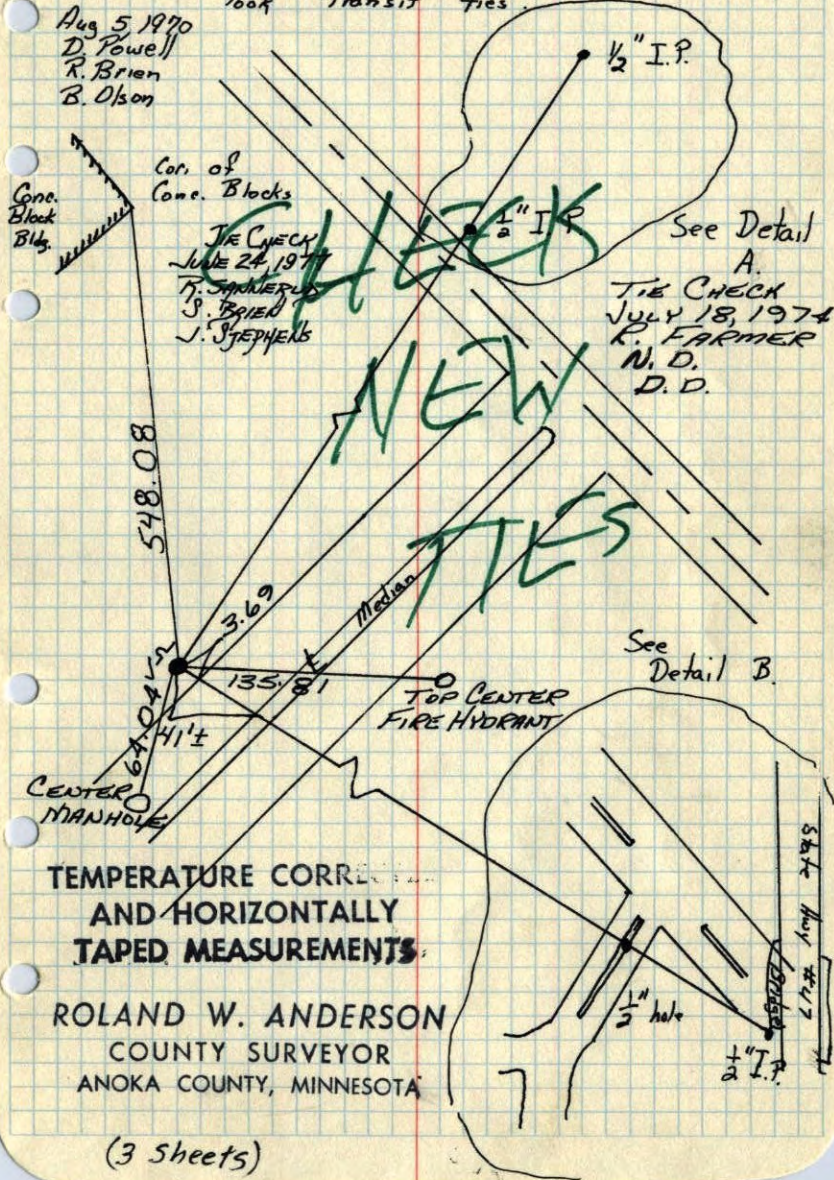
TOP CENTER FIRE HYDRANT

See Detail B.

TEMPERATURE CORRECTED
AND HORIZONTALLY
TAPED MEASUREMENTS

ROLAND W. ANDERSON
COUNTY SURVEYOR
ANOKA COUNTY, MINNESOTA

(3 sheets)



CERTIFICATE OF LOCATION OF GOVERNMENT CORNER

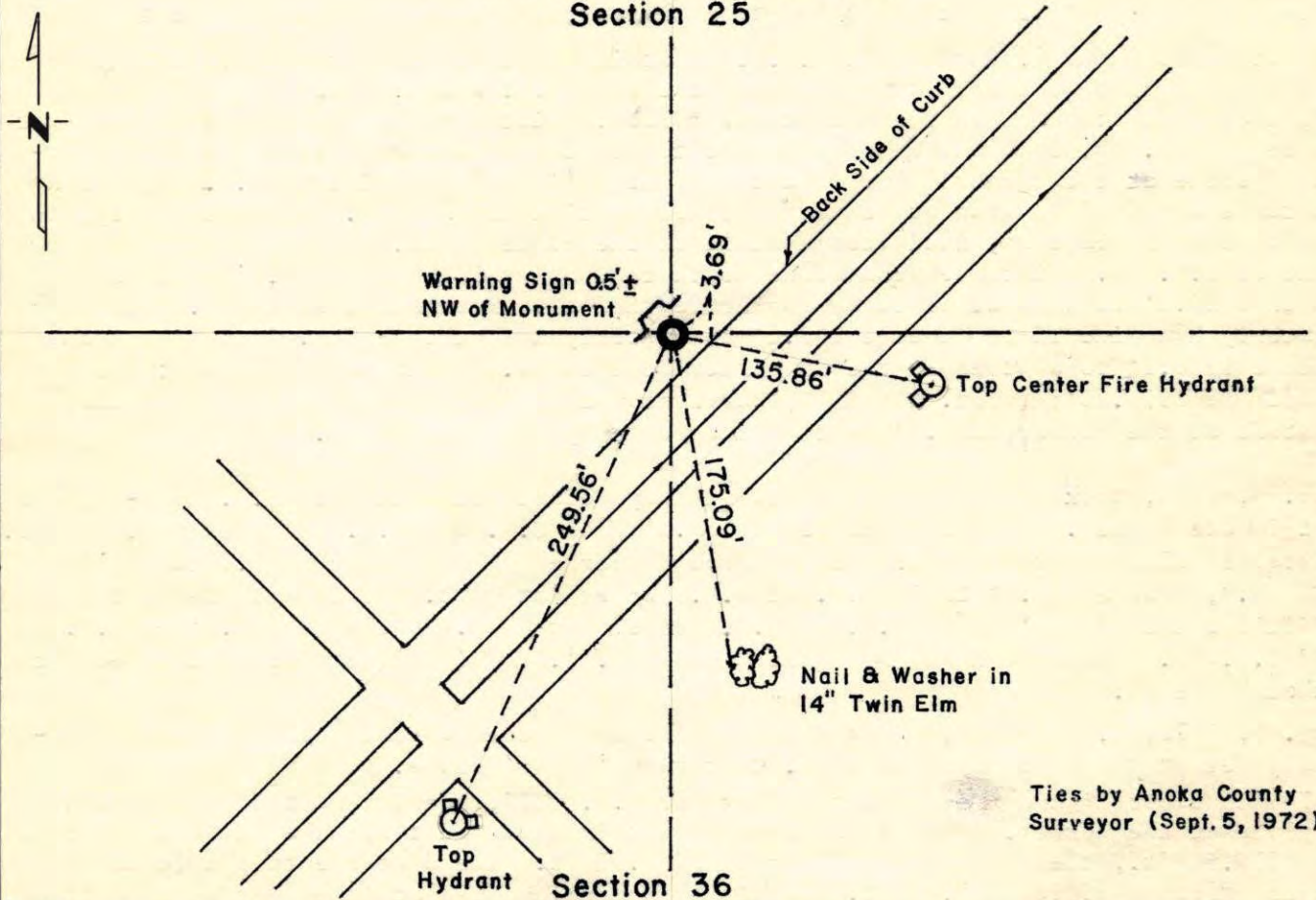
~~NORTH QUARTER~~ ^{South Quarter} Corner of Section 36²⁵, Township 31N, Range 24W, 4th P.M.

STATE OF MINNESOTA, County of Anoka

At the corner location shown on the sketch:

- On 1974 found a Anoka County Cast Iron Monument
DATE
- left monument as found, lowered monument, removed monument (explain)
- On _____ placed a _____
DATE

SKETCH OF REFERENCE TIES Section 25



Ties by Anoka County Surveyor (Sept. 5, 1972)

Statement of evidence relative to this corner location is on back of page.

I hereby certify that this document and the data contained herein was prepared by me or under my direct supervision.

John E. Sullivan 9-2-75
SIGNATURE DATE

Registration No. 10460

- Land Surveyor, Professional Engineer
- County Surveyor, County Engineer

OFFICE OF THE REGISTER OF DEEDS
County of _____

I hereby certify that this document was filed in the Reg. of Deeds office at _____ .M. on the _____ day of _____ A.D., 19 _____

Register of Deeds _____
By _____, Deputy

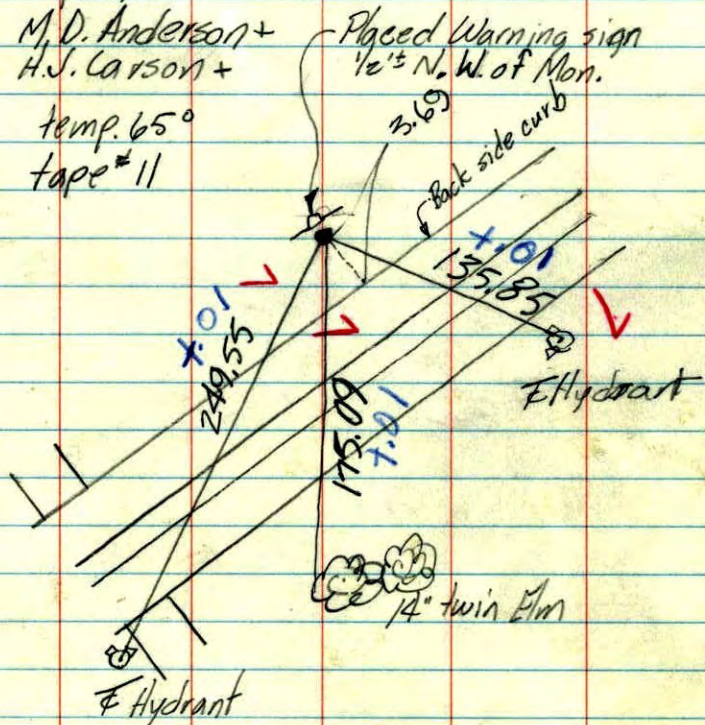
DOCUMENT NO. _____

5/4 Cor. Sec. 25-T31-R24
 Refound from transit ties by
 our office
 Cast Iron Monument down 1.4'±
 Monument fit transit ties

Sept. 5, 1970

M.D. Anderson +
H.J. Carson +

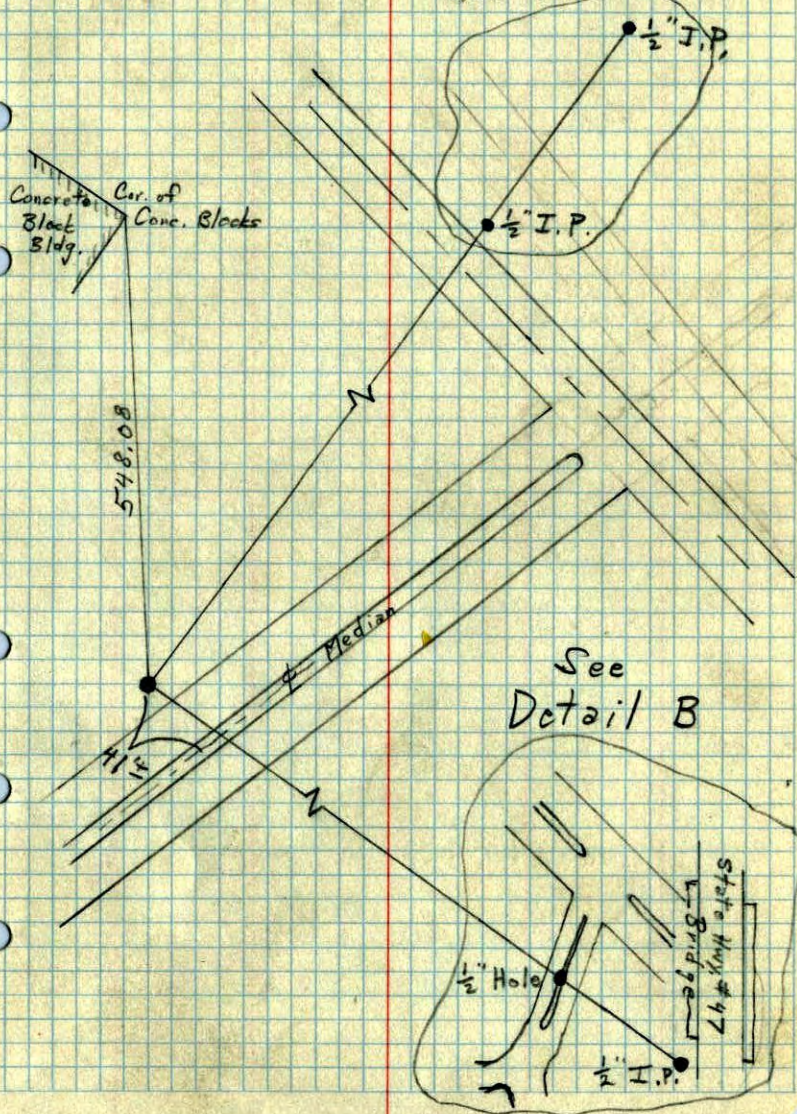
temp. 65°
tape # 11



5/4 Cor. Sec. 25-T31-R24

Lowered Cast Iron Mon. down 1.0'±
Took transit ties.

See Detail A



Detail A

5/4 Cor. ^{for} Sec 25 - T31 - R24

Aug. 5, 1970
D. Powell
R. Brien
B. Olson

Do Not Blaze
Trees

Tell Owner First

11.26 1/2" I.P. Flush

10" Oaks
Nail & Washer

10" Oak
N+W

33.60
Nail & Washer
12" Oak

Cor. of
Conc.
Sign
Base



09.18

Nail & Washer
T.P.

61.63

Mailbox
Post
N+W

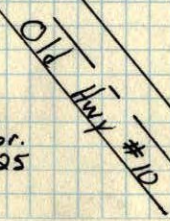
12.82

48.04 Nail & Washer
P.P.

180° 24'±

1/2" Iron Pipe
flush

5/4 Cor.
Sec. 25



TEMPERATURE CORRECT
AND HORIZONTALLY
TAPED MEASUREMENTS

Detail A

8/5/70
#10-85°
D. Powell
R. Brien
B. Olson

Do Not
Blaze
Trees
Tell owner
first.

11.26 1/2" I.P. flush.

10" Oak
N+W

14.31

33.59
12" Oak
N+W

Cor. of
Conc.
Sign
Base



11.18

T.P.
N+W

61.62

Mailbox
Post
N+W

12.82

1/2" I.P. flush.

P.P.
N+W

48.03
±0.1

24'±

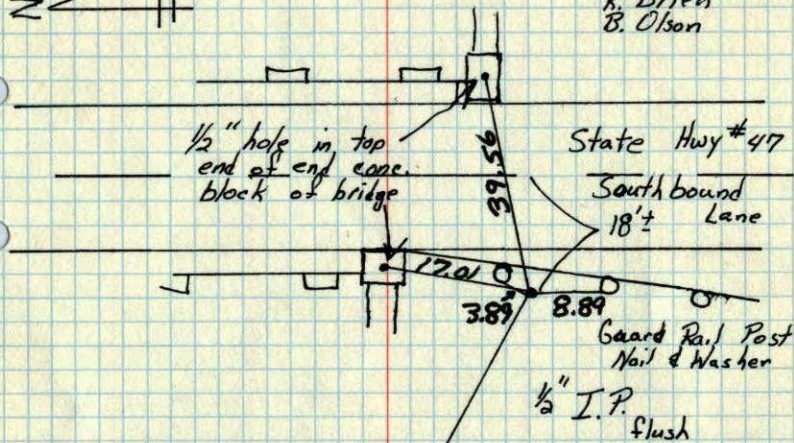
5/4 Cor.
Sec. 25



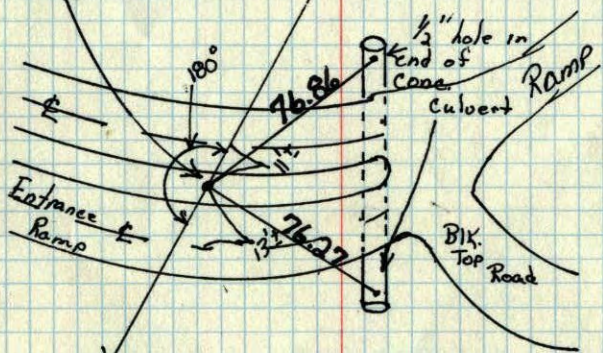
Detail B

Sky Cor. for Sec 25-T31-R24

Aug 5, 1970
D. Powell
R. Brien
B. Olson



1/2" hole drilled in concrete median with Bridge Spike flush in hole.

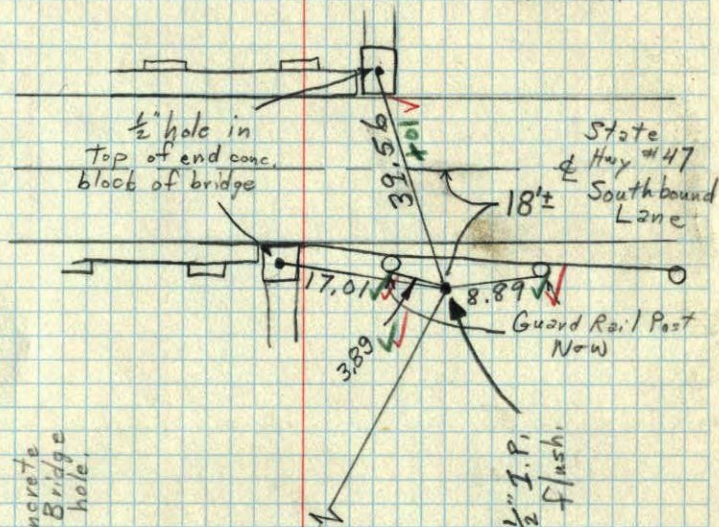


Sky Cor. Sec. 25

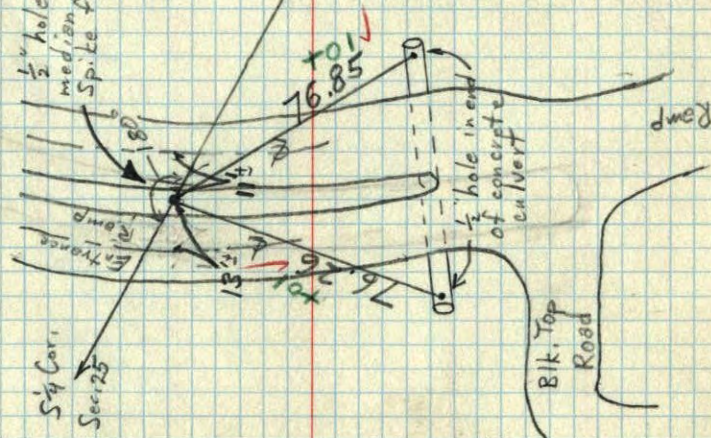
TEMPERATURE CORRECTED AND HORIZONTALLY TAPED MEASUREMENTS

Detail B

8/5/70
#10-78
D. Powell
R. Brien
B. Olson



1/2" hole in concrete median with Bridge Spike flush in hole.



Sky Cor. Sec. 25

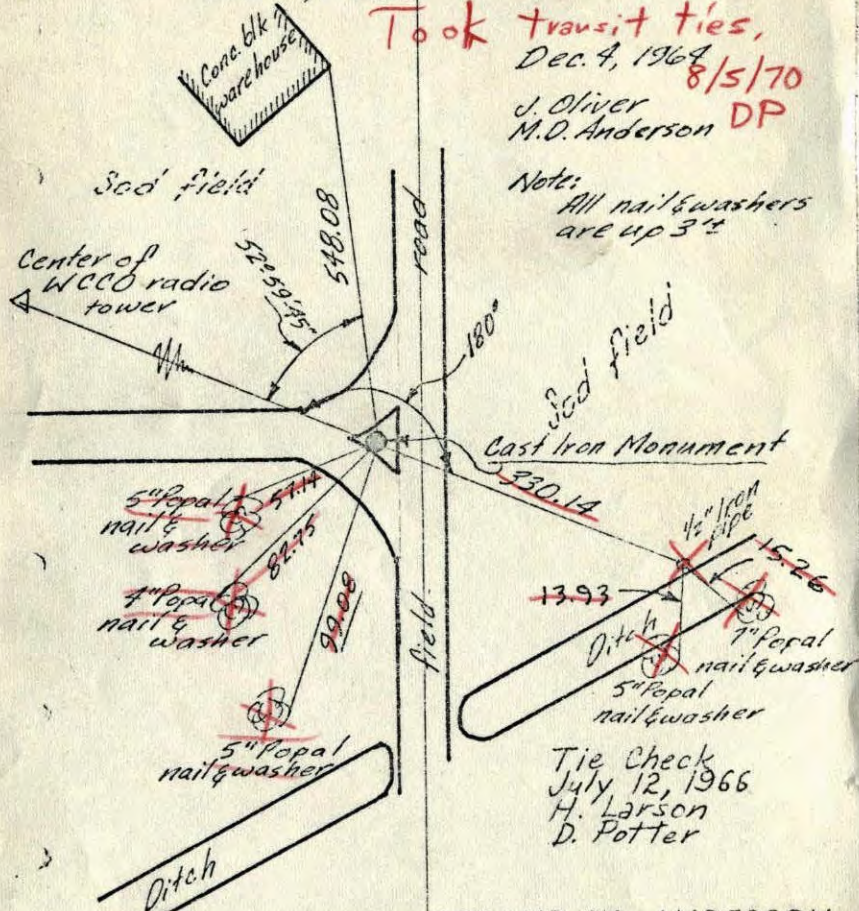
BIK. Top Road

S 1/4 Cor. Sec. 25-T31-R24

found Conc. monument leaning over

Removed Conc. & replaced with
Cast iron monument flush

Placed steel fence posts 0.5'
east & west



Took transit ties,
Dec. 4, 1964
8/5/70
J. Oliver
M.O. Anderson DP

Note:
All nail & washers
are up 3"

Tie Check
July 12, 1966
H. Larson
D. Potter

TEMPERATURE CORRECTED
AND HORIZONTALLY
TAPED MEASUREMENTS

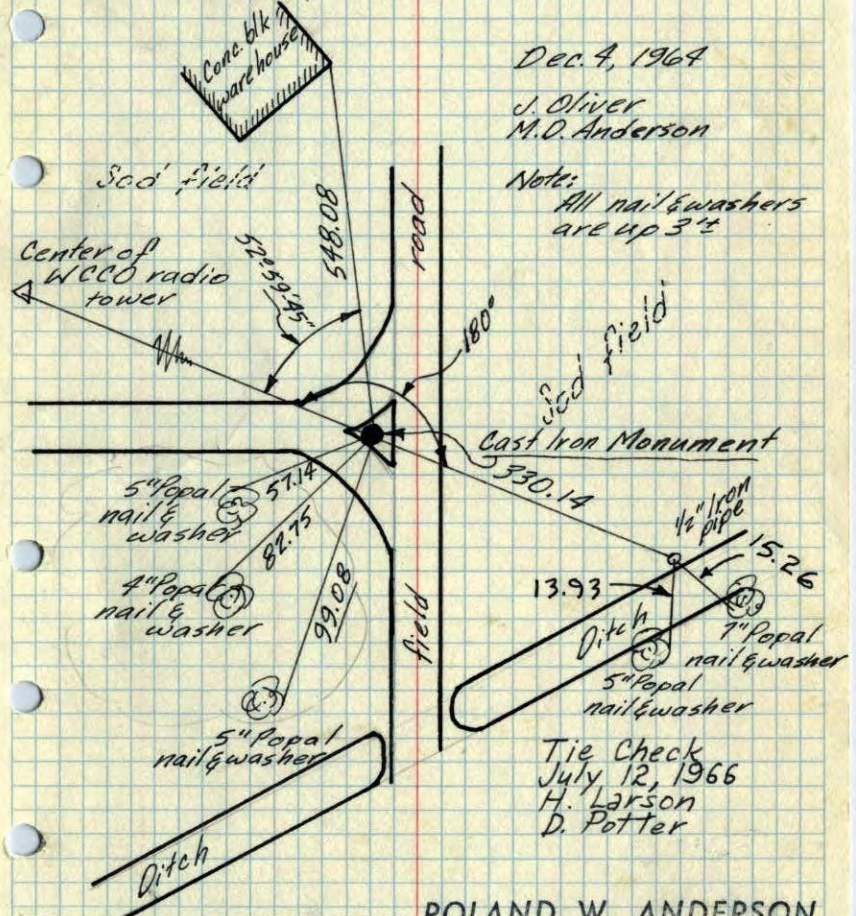
ROLAND W. ANDERSON
COUNTY SURVEYOR
ANOKA COUNTY, MINNESOTA

S 1/4 Cor. Sec. 25-T31-R24

found Conc. monument leaning over

Removed Conc. & replaced with
Cast iron monument flush

Placed steel fence posts 0.5'
east & west



Dec. 4, 1964
J. Oliver
M.O. Anderson

Note:
All nail & washers
are up 3"

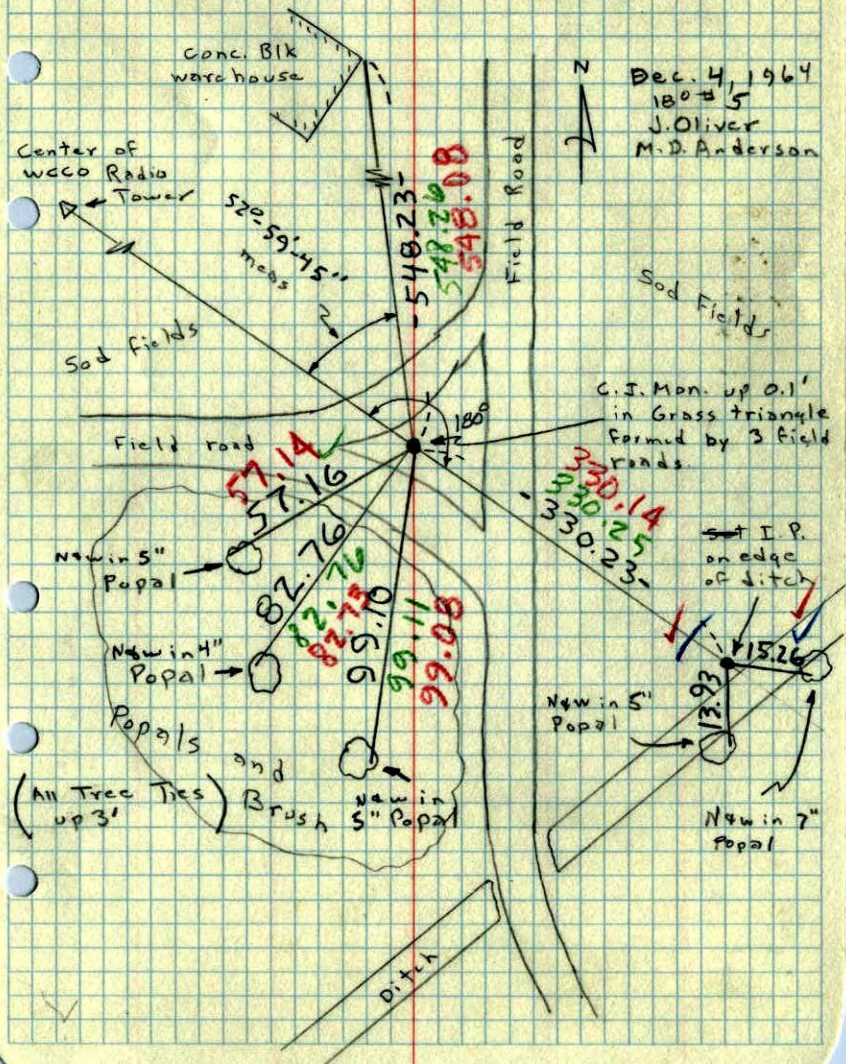
Tie Check
July 12, 1966
H. Larson
D. Potter

TEMPERATURE CORRECTED
AND HORIZONTALLY
TAPED MEASUREMENTS

ROLAND W. ANDERSON
COUNTY SURVEYOR
ANOKA COUNTY, MINNESOTA

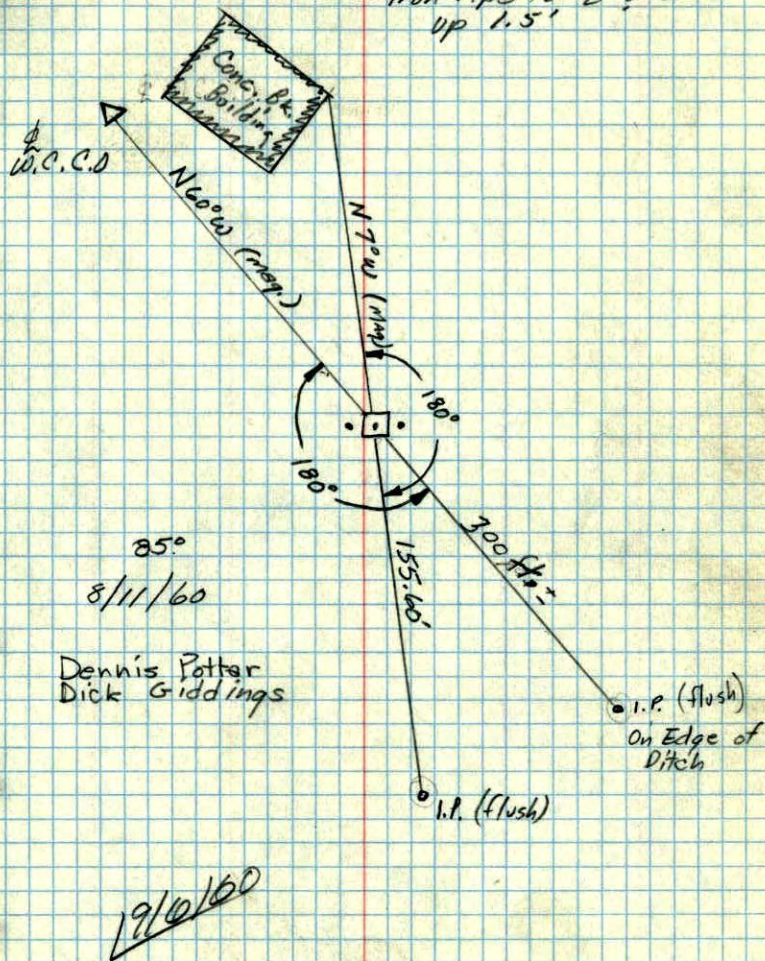
S 1/4 Cor. Sec. 25, T31, R24

Found Conc. Mon. leaning over. Straightened
and replaced with Cast. Iron monuments.
Also set Steel Fence Post 0.5' East and West.

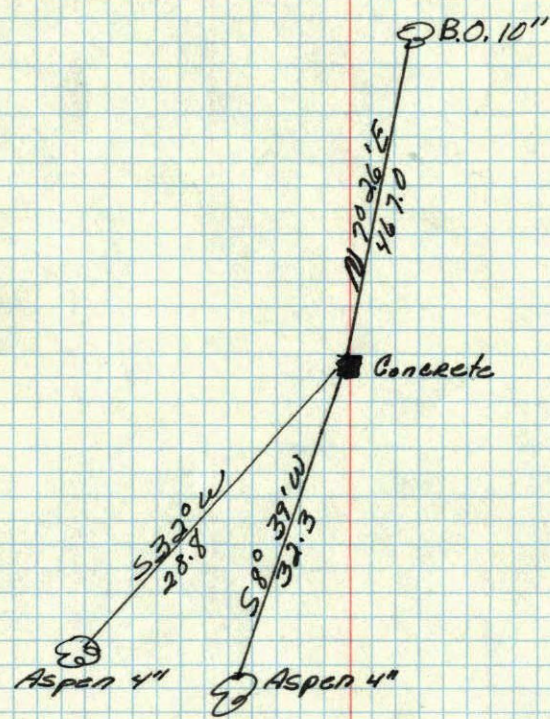


S 1/4 Sec 25, T31, R24

Conc. Mon.
up 1.3'
Iron Pipe to E & W
up 1.5'



S¹/₄ corner of Sec. 25 T. 31. R. 24
Concrete Monument flash



Nov. 27, 1944
Cartwright