

# CERTIFICATE OF LOCATION OF GOVERNMENT CORNER

County of Anoka

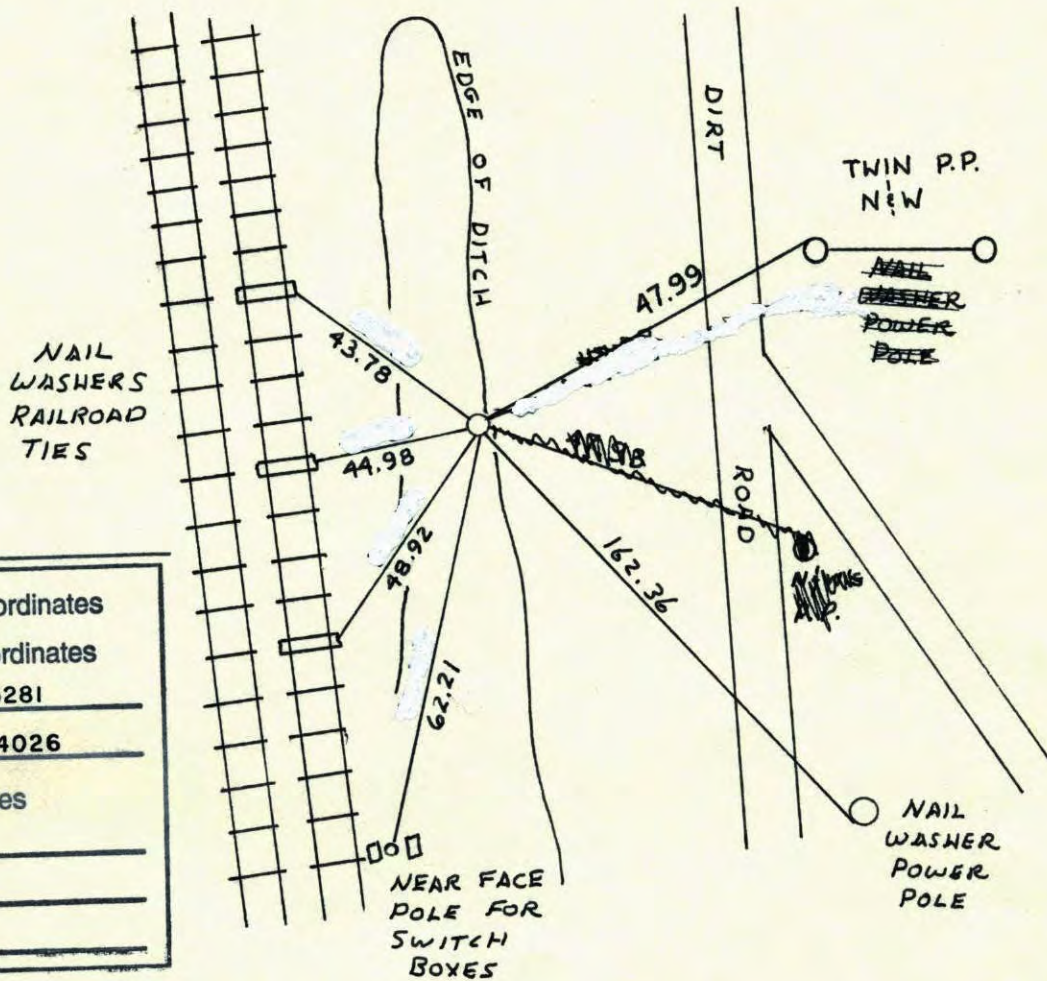
State of Minnesota

SOUTHEAST Corner of Sec. 26 Township 31 Range 24

I hereby certify that on the 3 day of AUG., 1960, I found the described corner which was evidenced by CONCRETE MONUMENT

and I further certify that to perpetuate the location of said corner, I did, at the exact location thereof, place a permanent marker consisting of EAST IRON MONUMENT

which reference or witness monuments are located in the manner following:



N.A.D.	1983	Co-ordinates
County	Project	Co-ordinates
Northing	<u>137758.5281</u>	
Easting	<u>494697.4026</u>	
State Plane Co-ordinates		
Y	_____	
X	_____	
Date	_____	

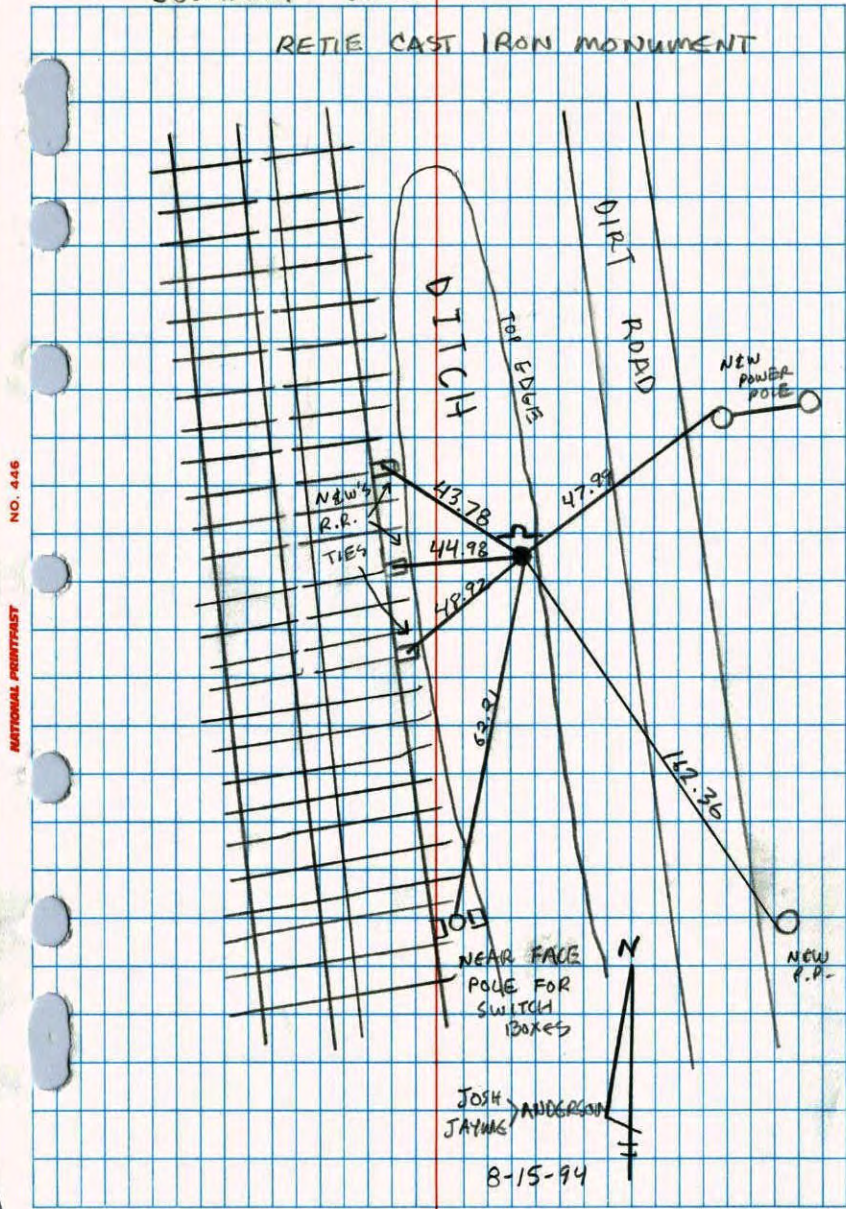
Revised date
<u>6-17-86</u>
<u>REDRAWN</u>
<u>2-1-88</u>
<u>9-18-90</u>
<u>8-15-94</u>

By
<u>D. ROSS</u>
<u>H. LARSON</u>
<u>B. KLEMEZ</u>
<u>"</u>

Minnesota State Plane Coordinates  
 South Zone  
 Y \_\_\_\_\_ X \_\_\_\_\_  
 \_\_\_\_\_  
 County Surveyor Date  
 Registered Land Surveyor No. \_\_\_\_\_

SOUTHEAST SEC. 26 TW. 31 R. 24

RETRIEVED CAST IRON MONUMENT

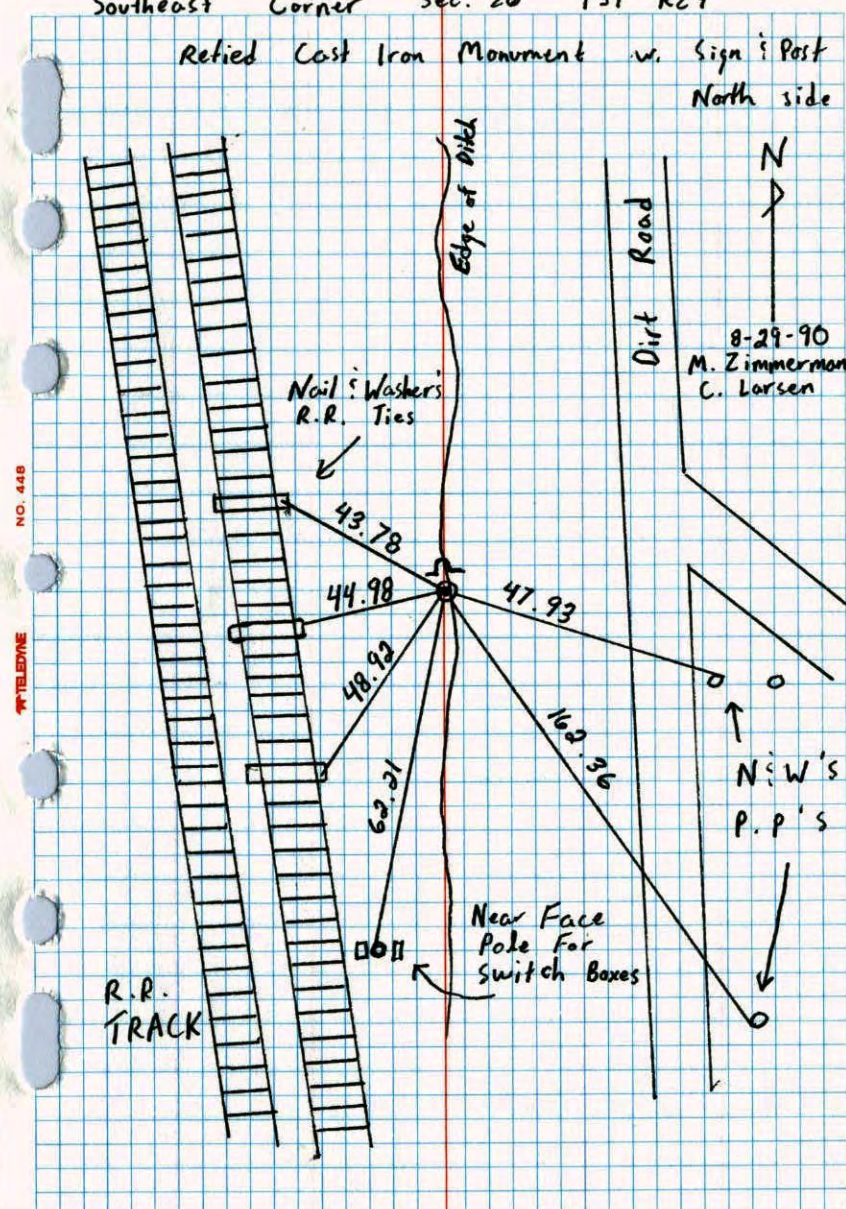


NO. 446

NATIONAL PROPERTY

Southeast Corner Sec. 26 T31 R24

Retrieved Cast Iron Monument w. Sign & Post North side



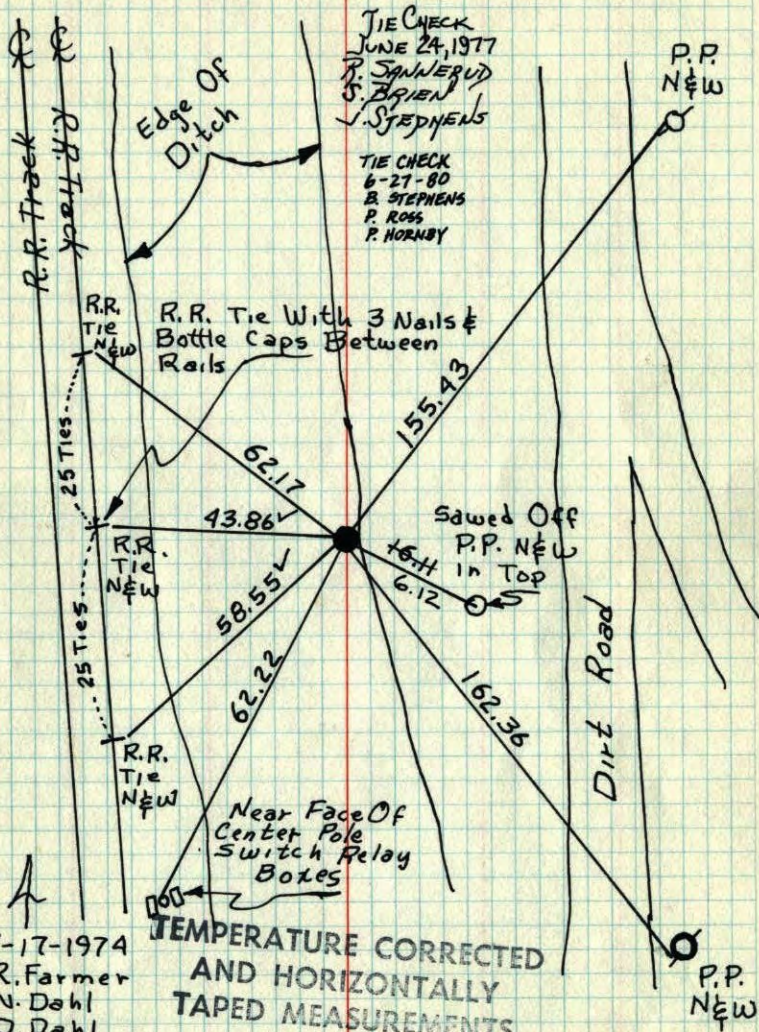
NO. 446

TELEPHONE

S.E. Cor. Sec. 26-T31-R24

91

Set Cast Iron Mon. In Place Of Conc. Mon.



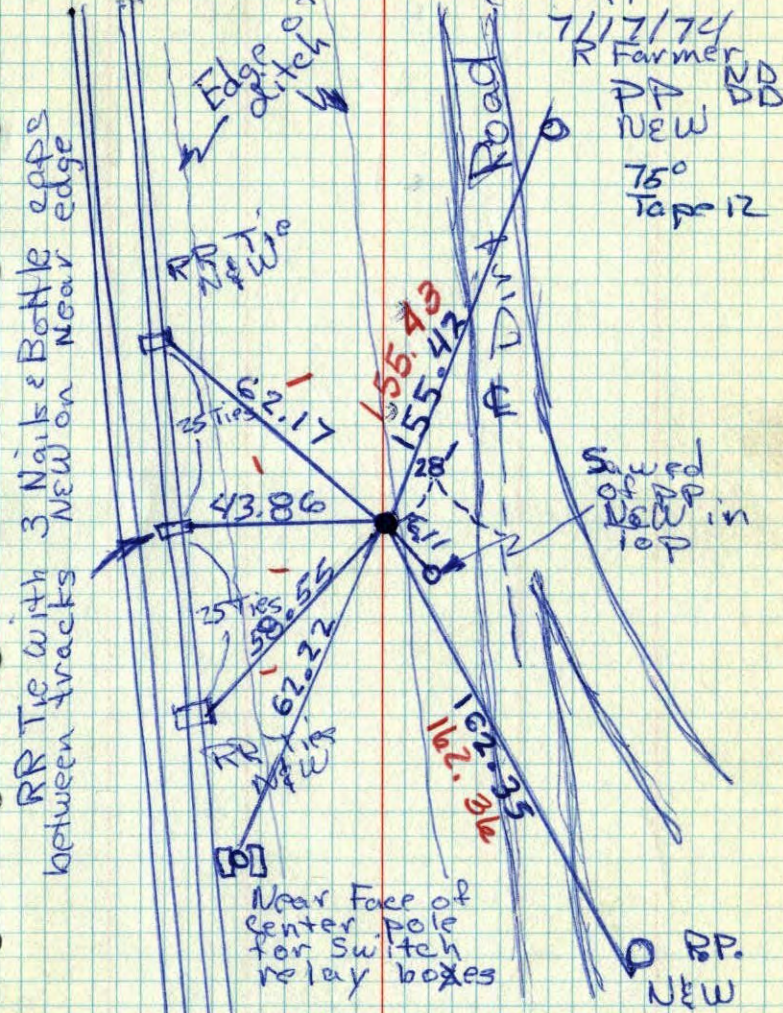
7-17-1974  
R. Farmer  
N. Dahl  
D. Dahl  
Temp. 75°  
Tape 12

TEMPERATURE CORRECTED  
AND HORIZONTALLY  
TAPED MEASUREMENTS  
ROLAND W. ANDERSON  
COUNTY SURVEYOR  
ANOKA COUNTY, MINNESOTA

83

SE cor Sec 26T31R24

BU RR Set east Iron mon in place of conc. mon (flush)



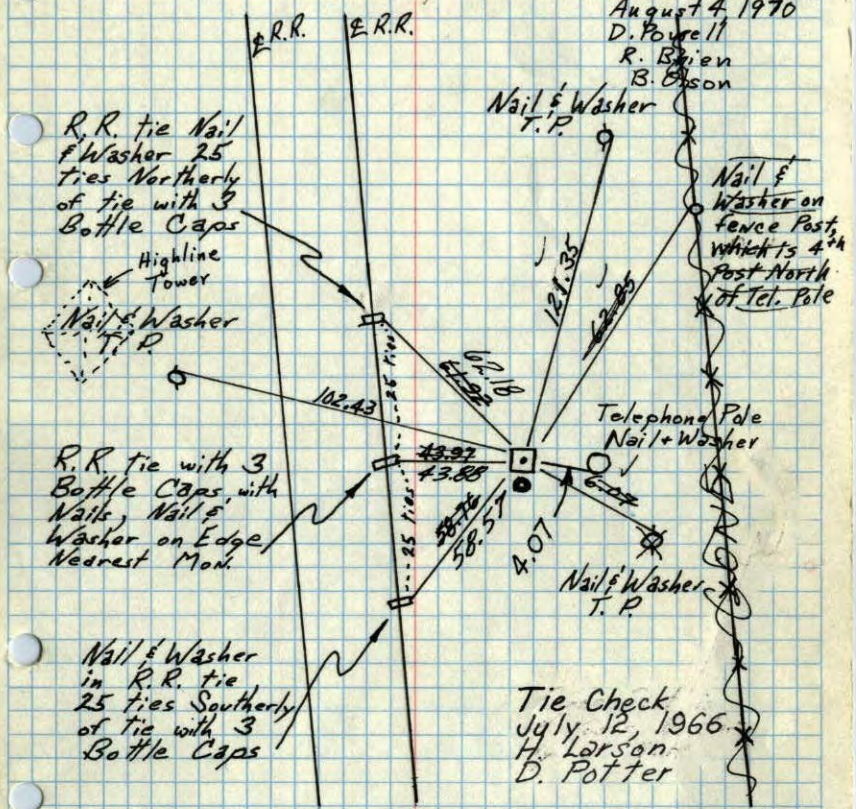
7/17/74  
R Farmer  
PP NEW  
75°  
Tape 12

Near Face of center pole for switch relay boxes

SE Cor Sec. 26-T31-R24

Conc. Mon. down .2'  
~~Iron on South~~

Tie Check  
August 4, 1970  
D. Powell  
R. Brien  
B. Olson



8/3/60  
D. Potter  
D. Giddings

TEMPERATURE CORRECTED  
AND HORIZONTALLY  
TAPED MEASUREMENTS

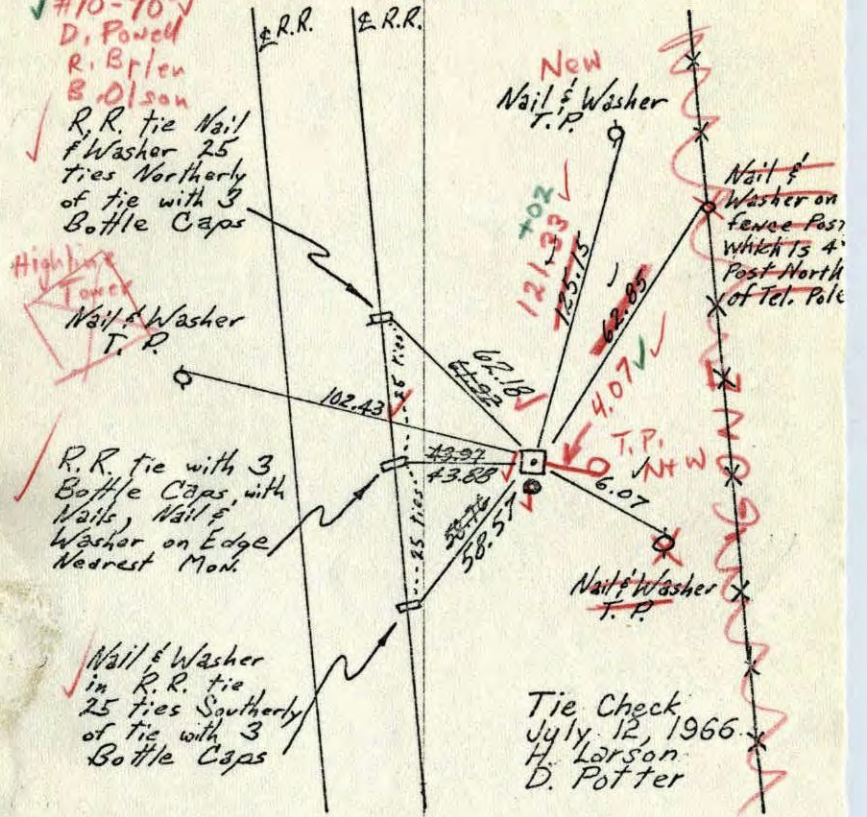
Ties checked  
June 4, 1964  
M.D. Anderson  
R. Carlson

ROLAND W. ANDERSON  
COUNTY SURVEYOR  
ANOKA COUNTY, MINNESOTA

SE Cor Sec. 26-T31-R24

Conc. Mon. down .2'  
~~Iron on South~~  
up .4'

8/4/70  
#10-70  
D. Powell  
R. Brien  
B. Olson



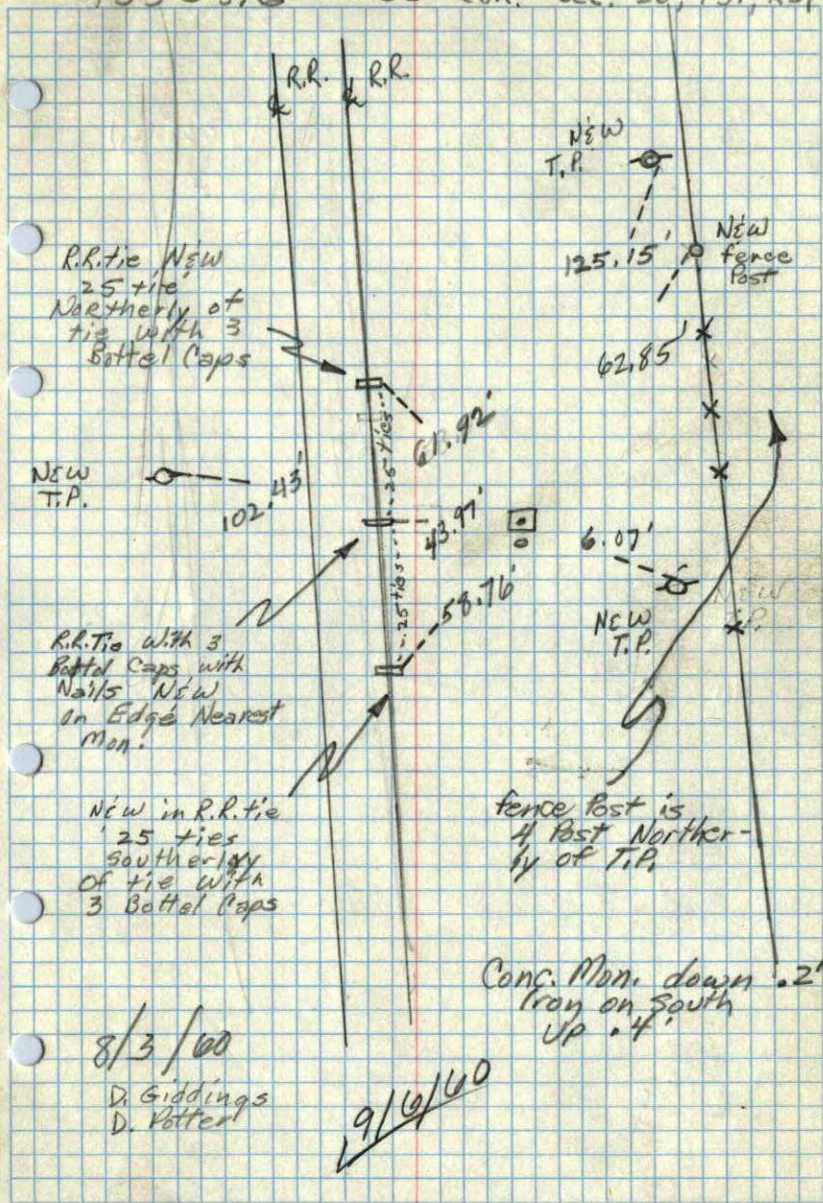
8/3/60  
D. Potter  
D. Giddings

TEMPERATURE CORRECTED  
AND HORIZONTALLY  
TAPED MEASUREMENTS

Ties checked  
June 4, 1964  
M.D. Anderson  
R. Carlson

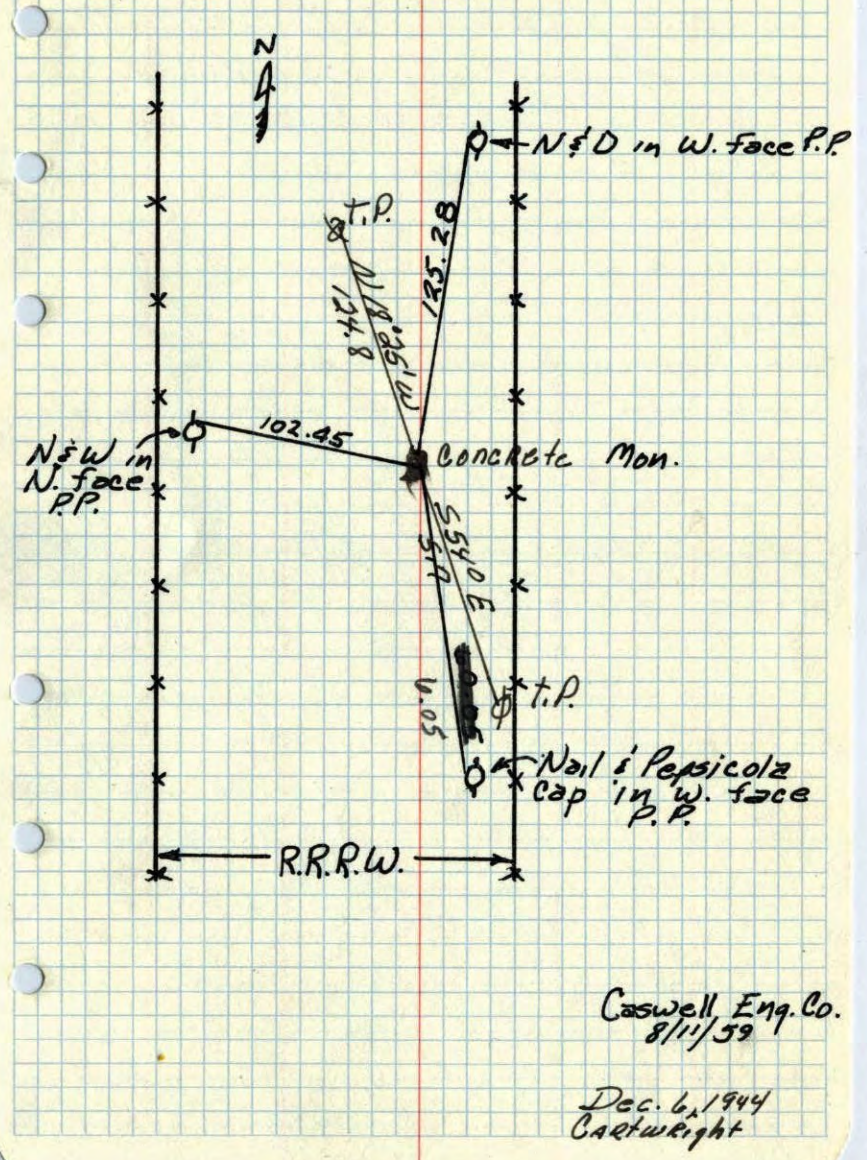
ROLAND W. ANDERSON  
COUNTY SURVEYOR  
ANOKA COUNTY, MINNESOTA

49505.6 SE Cor. Sec. 26, T31, R24

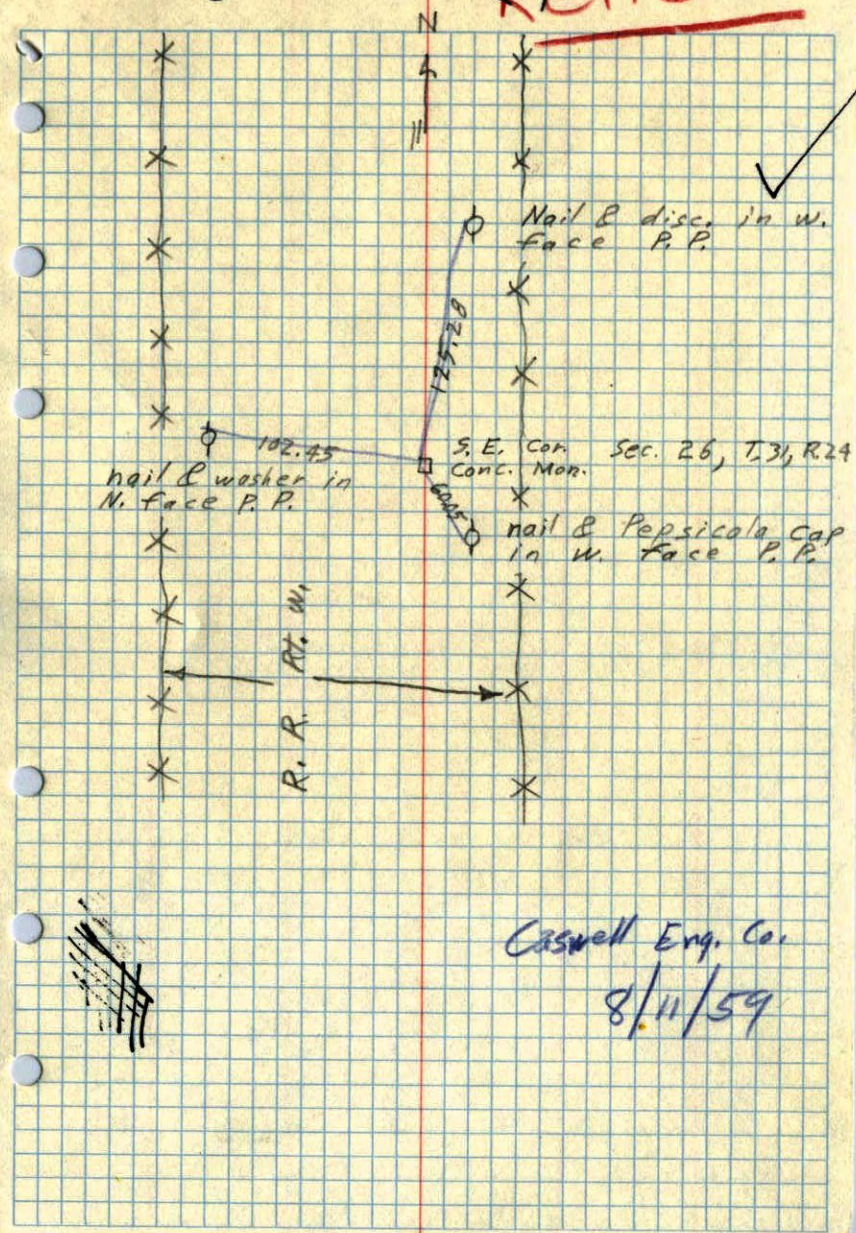


SE corner of Sec. 26 T31 R24 ✓

Conc. Mon. down .2



SE 26 T31 R24 ~~tie~~



Caswell Eng. Co.

8/11/59