

# CERTIFICATE OF LOCATION OF GOVERNMENT CORNER

County of Anoka

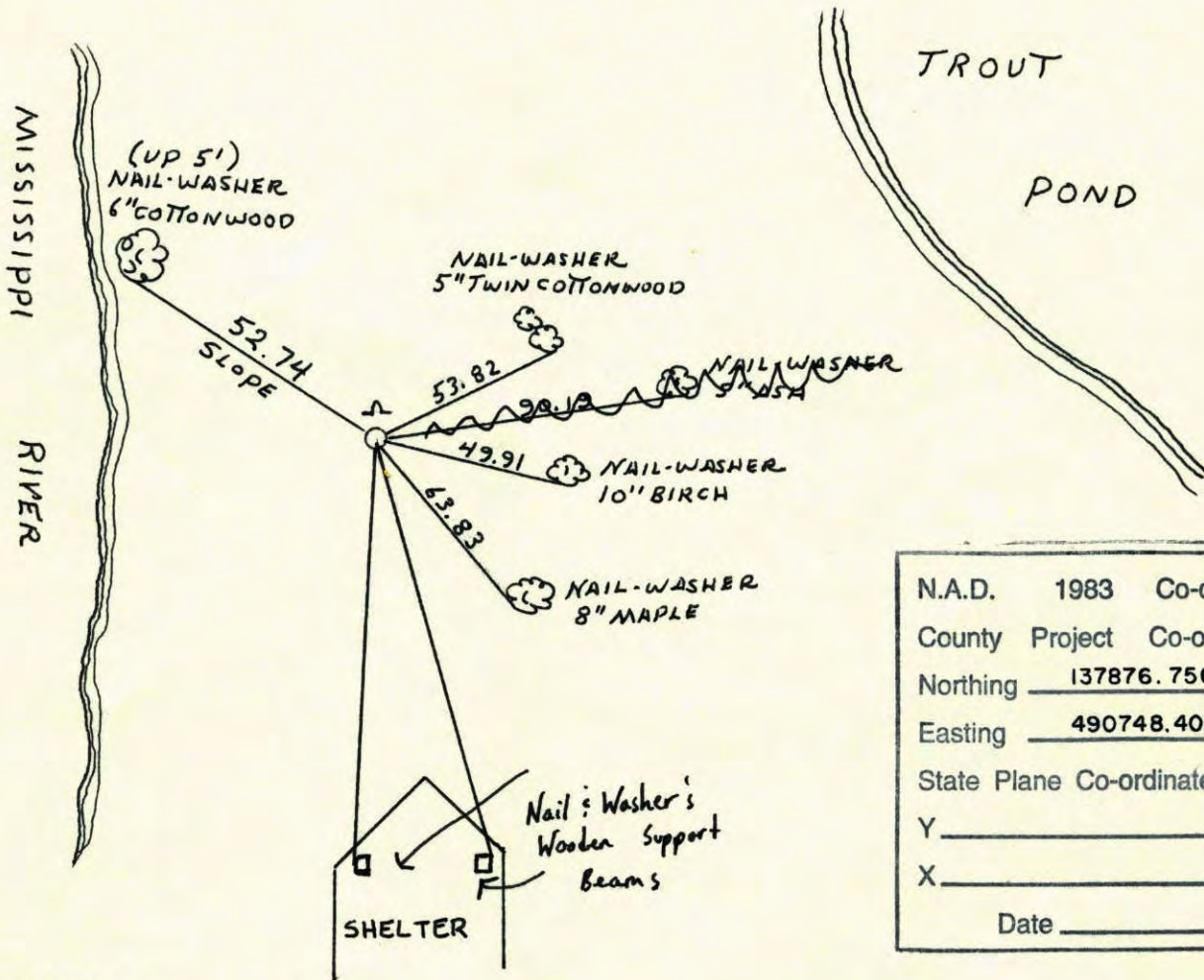
State of Minnesota

WITNESS Corner of Sec. 26 Township 31 Range 24  
ON SOUTH LINE OF SW 1/4

I hereby certify that on the 29 day of MAY, 1980, I found the described corner which was evidenced by AREA RESURVEY

and I further certify that to perpetuate the location of said corner, I did, at the exact location thereof, place a permanent marker consisting of CAST IRON MONUMENT SIGN AND POST ON NORTH SIDE

which reference or witness monuments are located in the manner following:



N.A.D.	1983	Co-ordinates
County	Project	Co-ordinates
Northing	<u>137876.7568</u>	
Easting	<u>490748.4035</u>	
State Plane Co-ordinates		
Y	_____	
X	_____	
Date _____		

Revised date
6-17-86
1-19-88
8-28-90
8-15-94

By
D. ROSS
H. LARSON

**Minnesota State Plane Coordinates**  
**South Zone**

Y \_\_\_\_\_ X \_\_\_\_\_

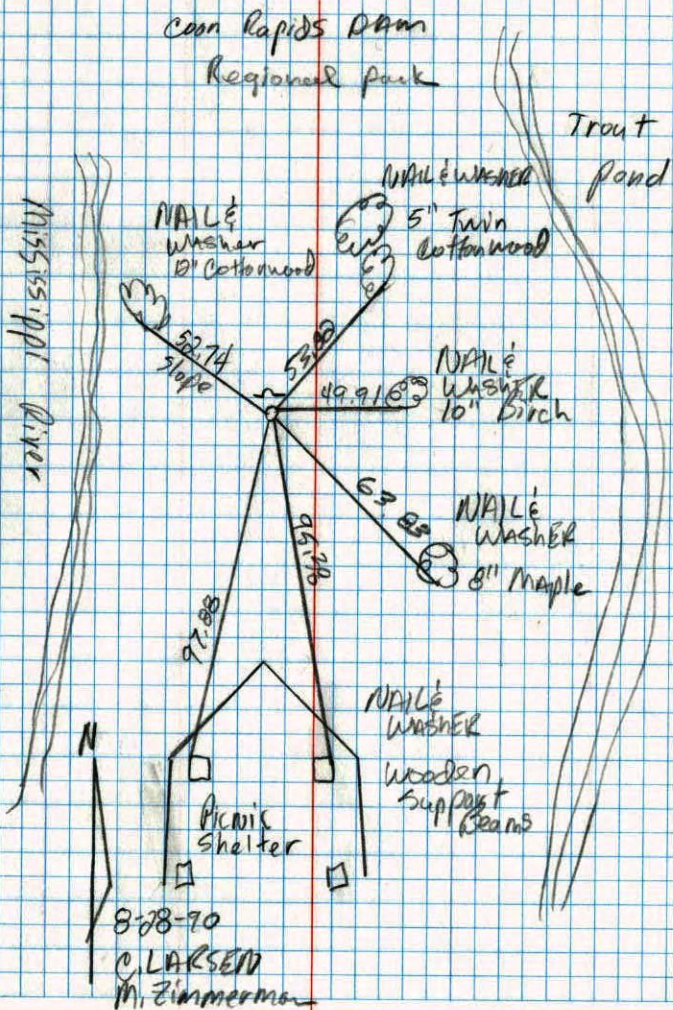
\_\_\_\_\_, \_\_\_\_\_  
 County Surveyor Date

Registered Land Surveyor No. \_\_\_\_\_

92A

Witness on South Line of SW 1/4 Sec. 26 T31 R24

Retied Cast Iron Monument

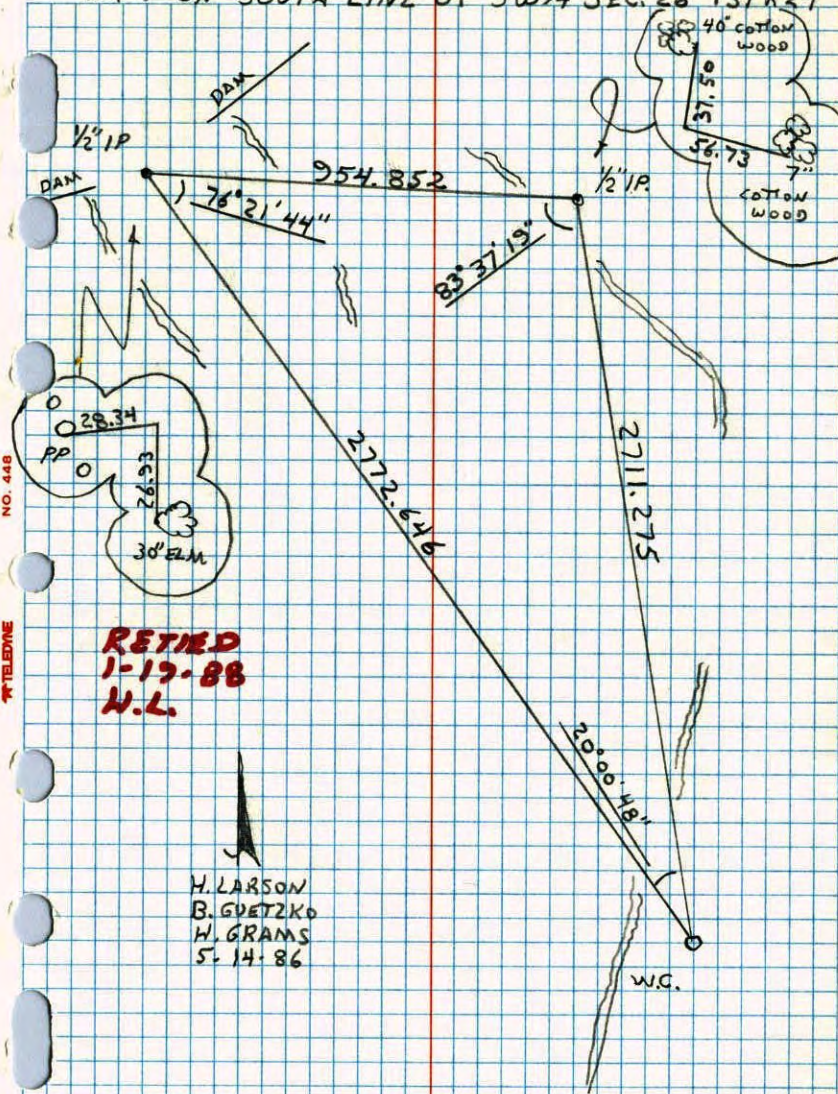


NO. 448

TELEPHONE

CONSTRUCTION TIES STILL IN PLACE.

W.C. ON SOUTH LINE OF SW 1/4 SEC. 26 T31 R24

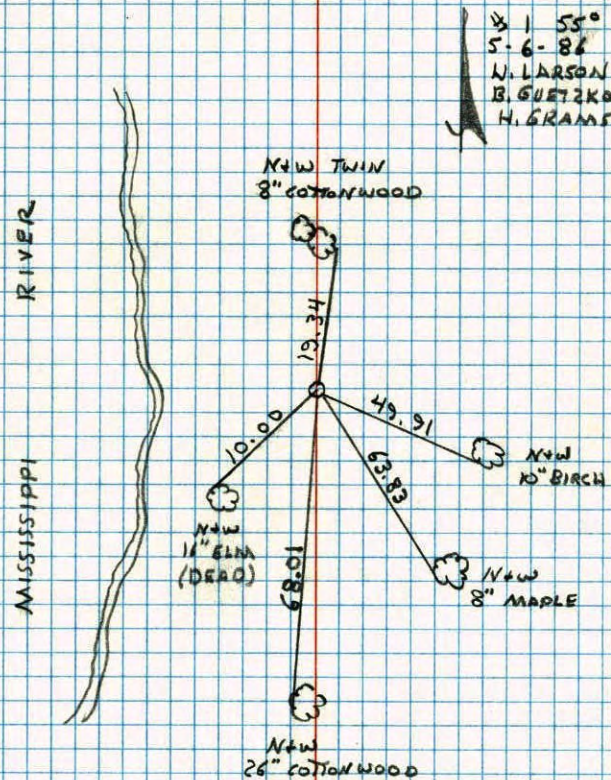


NO. 448

TELEPHONE

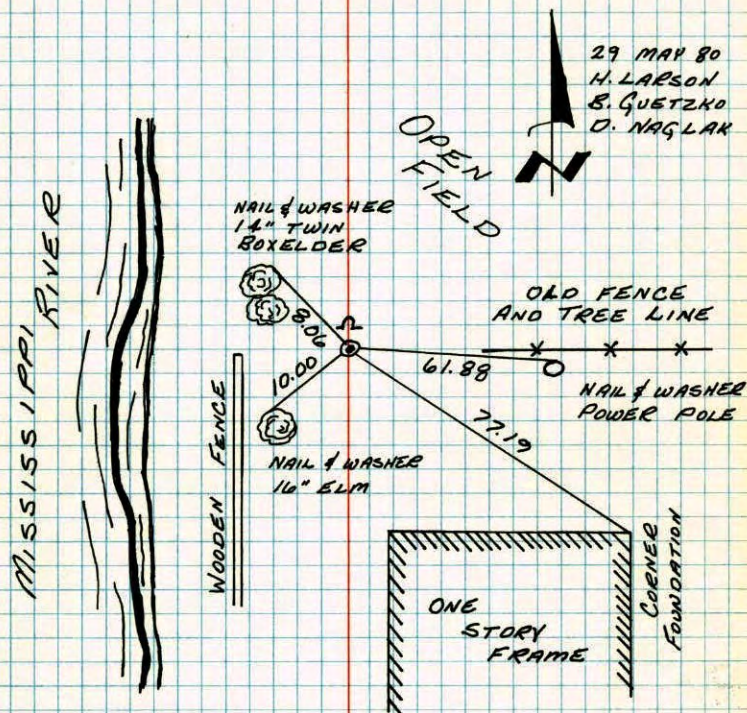
W.C. ON SOUTH LINE OF SW 1/4 SEC. 26 T31 R24

RETIRED CAST IRON AFTER HOUSE WAS REMOVED

C.I. FLUSH WITH SIGN AND POST ON NORTH  
SIDE.

NO. 448

TELEPHONE

WITNESS CORNER ON SOUTH LINE OF  
SW 1/4 SECTION 26-T31-R24SET CAST IRON MONUMENT ON OCCUPATION LINE  
AND TIED INTO RANDOM LINE AND 30'± FROM  
RIVER. SIGN AND POST ON NORTH SIDE.

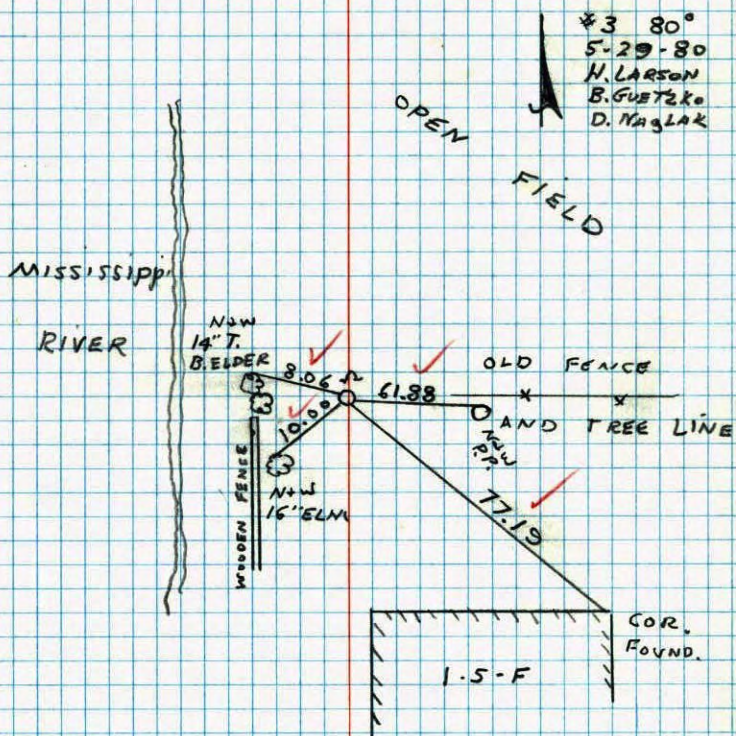
NO. 448

TELEPHONE

TEMPERATURE CORRECTED  
AND HORIZONTALLY  
TAPED MEASUREMENTSROLAND W. ANDERSON  
COUNTY SURVEYOR  
ANOKA COUNTY, MINNESOTA

W.C. ON SOUTH LINE OF SW 1/4 SEC 26  
T31 R24

SET CAST IRON MONUMENT ON  
OCCUPATION LINE AND TIED INTO  
RANDOM LINE AND 30' FROM RIVER  
SIGN AND POST ON N. SIDE.

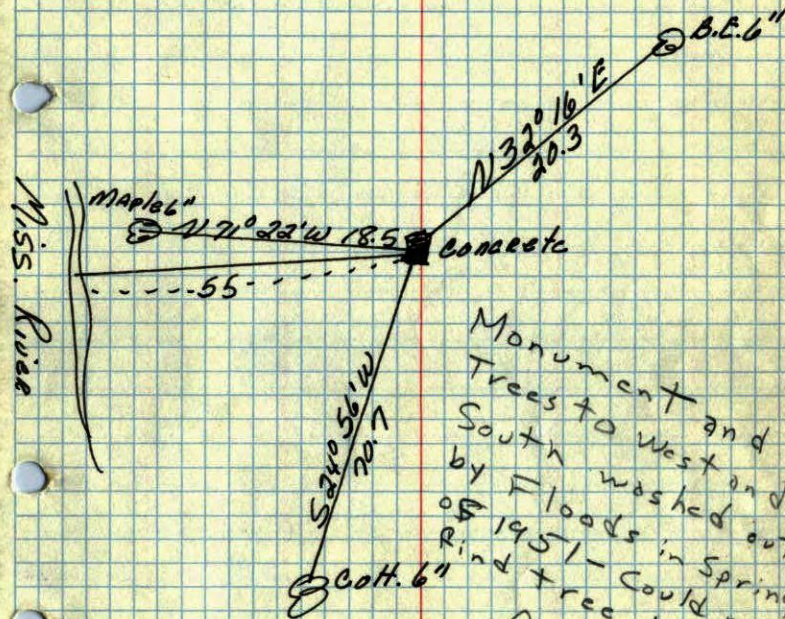


NO. 448

TELEPHONE

92A ✓

M. C. S - Sec. 26 T. 31. R. 24  
Conc. Mon. flush



Monument and  
Trees to west and  
South washed out  
by Floods in Spring  
of 1951 - Could not  
find tree to NE.  
JD 28 May 1962

Jan. 24, 1944  
Cartwright