

CERTIFICATE OF LOCATION OF GOVERNMENT CORNER

County of Anoka

State of Minnesota

Witness Corner of Sec. 26 Township 31 Range 24

(On south line of SW1/4)

On the 22nd day of September, 1987, the described corner was evidenced by area resurvey

and to perpetuate the location of said corner, at the exact location thereof, a permanent marker was placed consisting of a cast iron monument

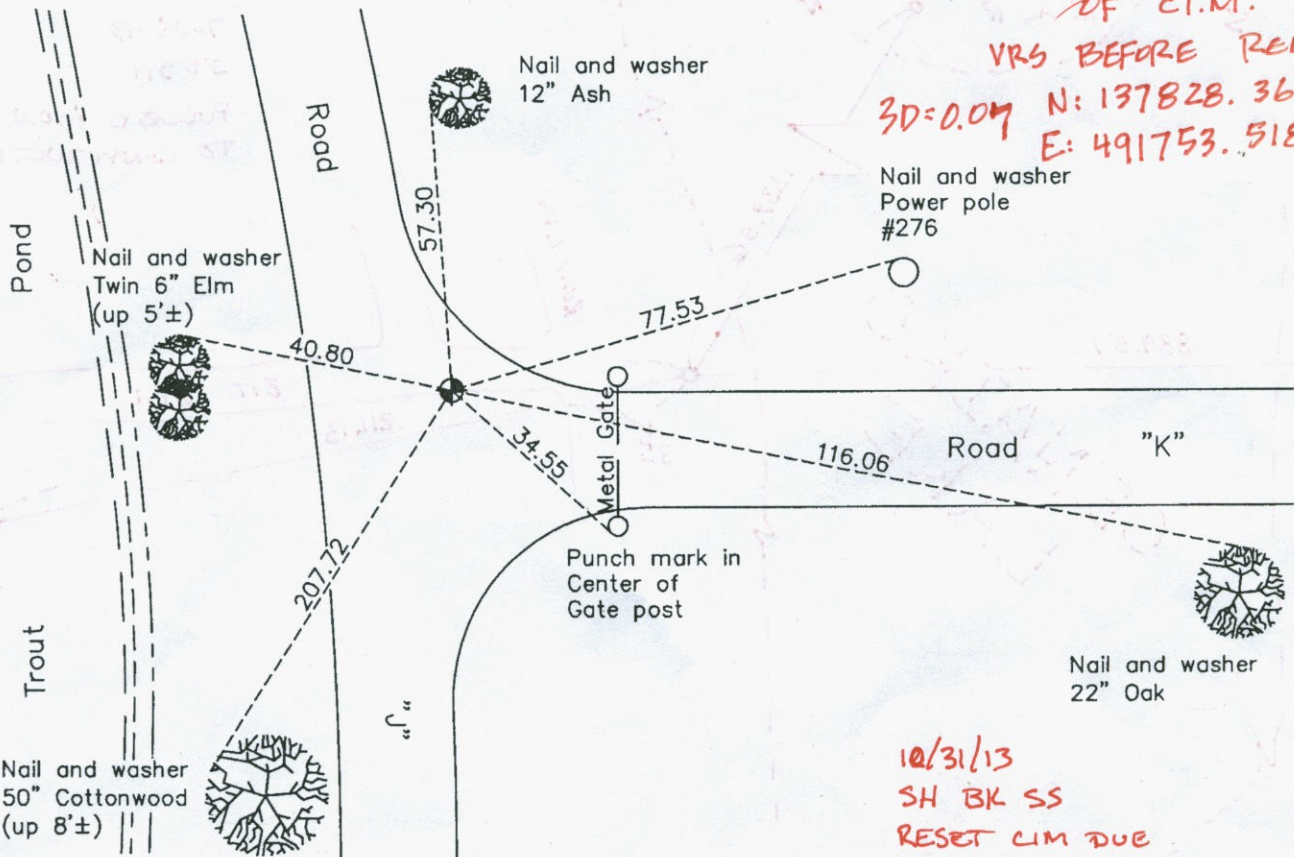
AND on the 18th day of February, 2010, said permanent marker was found flush and the ties were updated

Updated reference ties are as shown below.

7.8.13 JS SH.
TIES & REMOVAL
OF C.I.M.

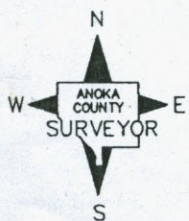
VRS BEFORE REMOVAL

3D=0.07 N: 137828.3662
E: 491753.5184



10/31/13
SH BK SS
RESET CIM DUE
TO ROAD CONST.
SEE ATTACHED SHEET
FOR UPDATED TIES.

S-0.03
W-0.05



N.A.D. 1983 Coordinates
(1996 Adjustment)

County Project Coordinates	
Northing	137828.3704
Easting	491753.5972
Date	8/16/01

Revision Date
5/25/10

I hereby certify that this United States public land survey monument record is correct and complete to the best of my knowledge and belief.

Larry D. Hoium Date 5/25/10

Larry D. Hoium, Anoka County Surveyor
Minnesota License Number 18165

HISTORY OF GOVERNMENT CORNER

County of Anoka

State of Minnesota

Witness Corner of Sec. 26 Township 31 Range 24

(On south line of SW1/4)

CORNER HISTORY:

September 22, 1987 - Set spike using area resurvey and established ties to monument.

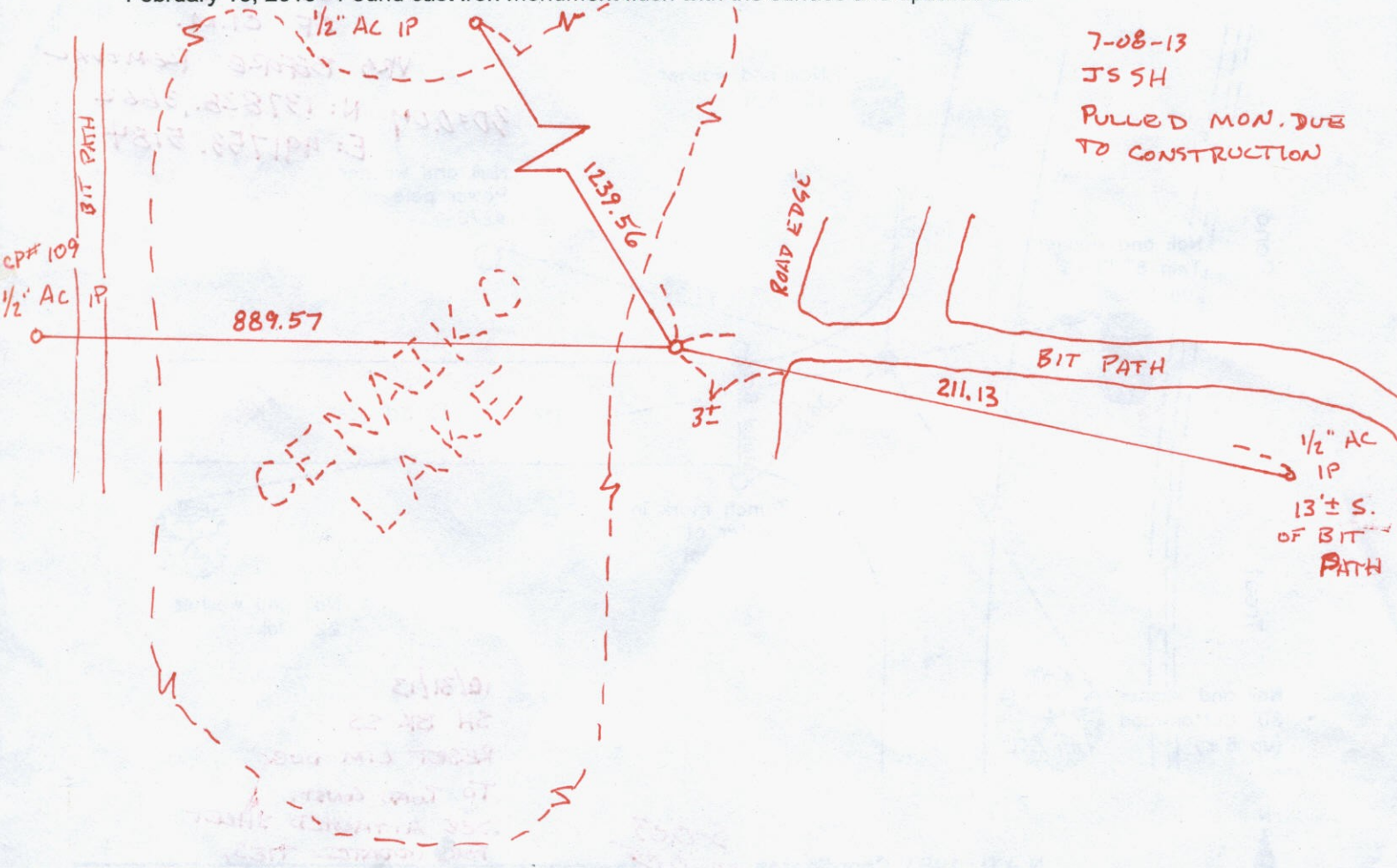
March 3, 1988 - Found spike and updated ties. It is not known whether the spike was replaced with a cast iron monument at this time.

August 28, 1990 - Found cast iron monument and updated ties.

August 15, 1994 - Found cast iron monument and updated ties.

August 16, 2001 - Found cast iron monument and established NAD 1983 (1996 Adjustment) Anoka County Project Coordinates by Static GPS methods. Updated ties.

February 18, 2010 - Found cast iron monument flush with the surface and updated ties.

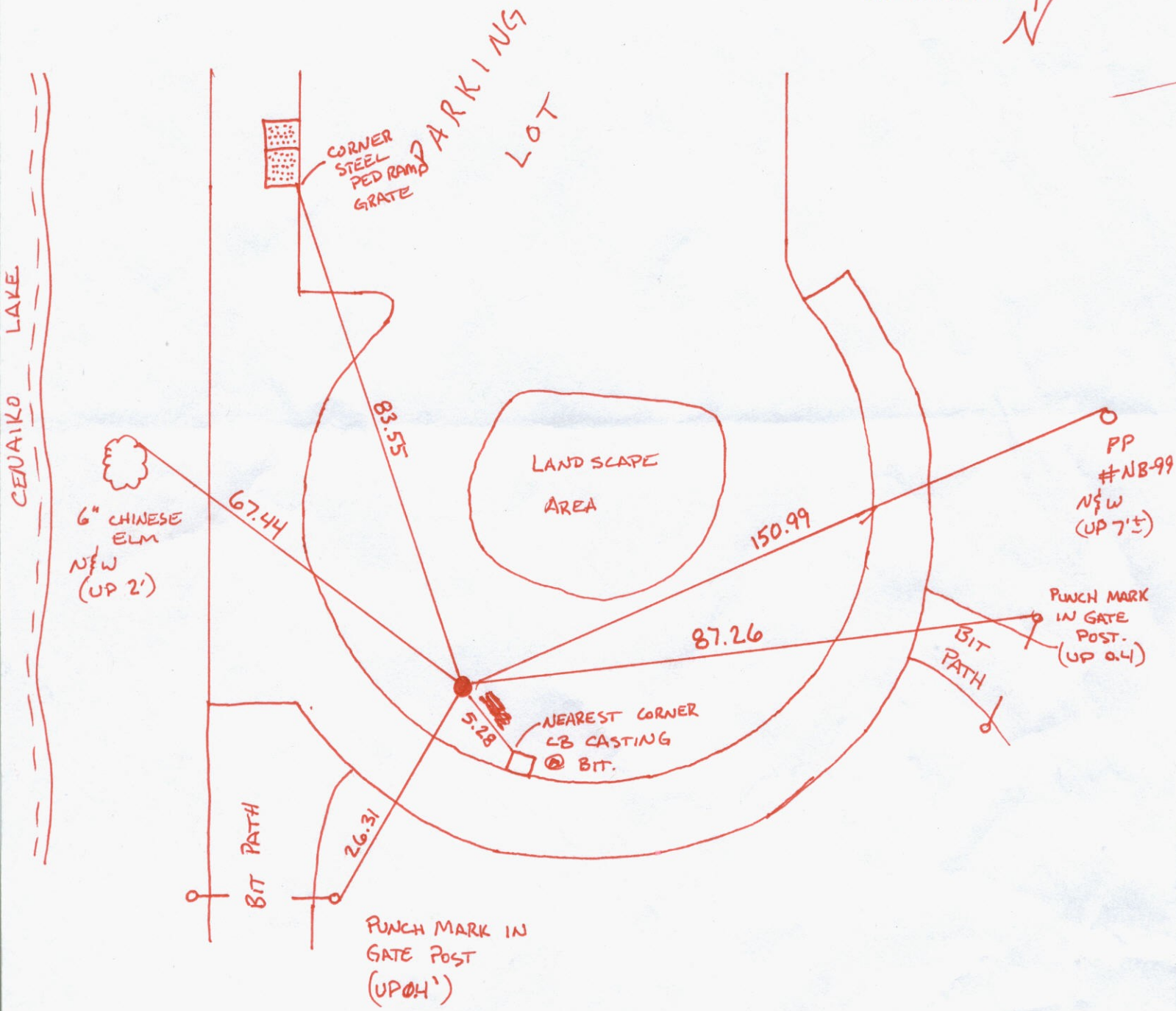
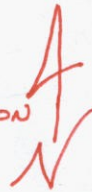


Point Id	Point Class	Date/Time	Northing	Easting	Ellip. Hgt.	Ortho. Hgt.	Geoid Sep.
☑ HIGHWAY	Control	10/29/2013 08:01:34	166323.7776	491096.2544	-119.0334	897.2833	-1016.3166
☑ police	Control	10/29/2013 08:25:14	136555.7563	507561.1530	-102.4734	912.2075	-1014.6809
☑ CR92B	Averaged	10/29/2013 09:25:44	137828.3996	491753.6477	-189.7838	825.1640	-1014.9478

VRS
3D = 0.05

N: 137828.3495
E: 491753.5768

10/31/13
SH BK SS
RESET CIM
DUE TO ROAD
CONSTRUCTION



CERTIFICATE OF LOCATION OF GOVERNMENT CORNER

County of Anoka

State of Minnesota

Witness Corner of Sec. 26 Township 31 Range 24

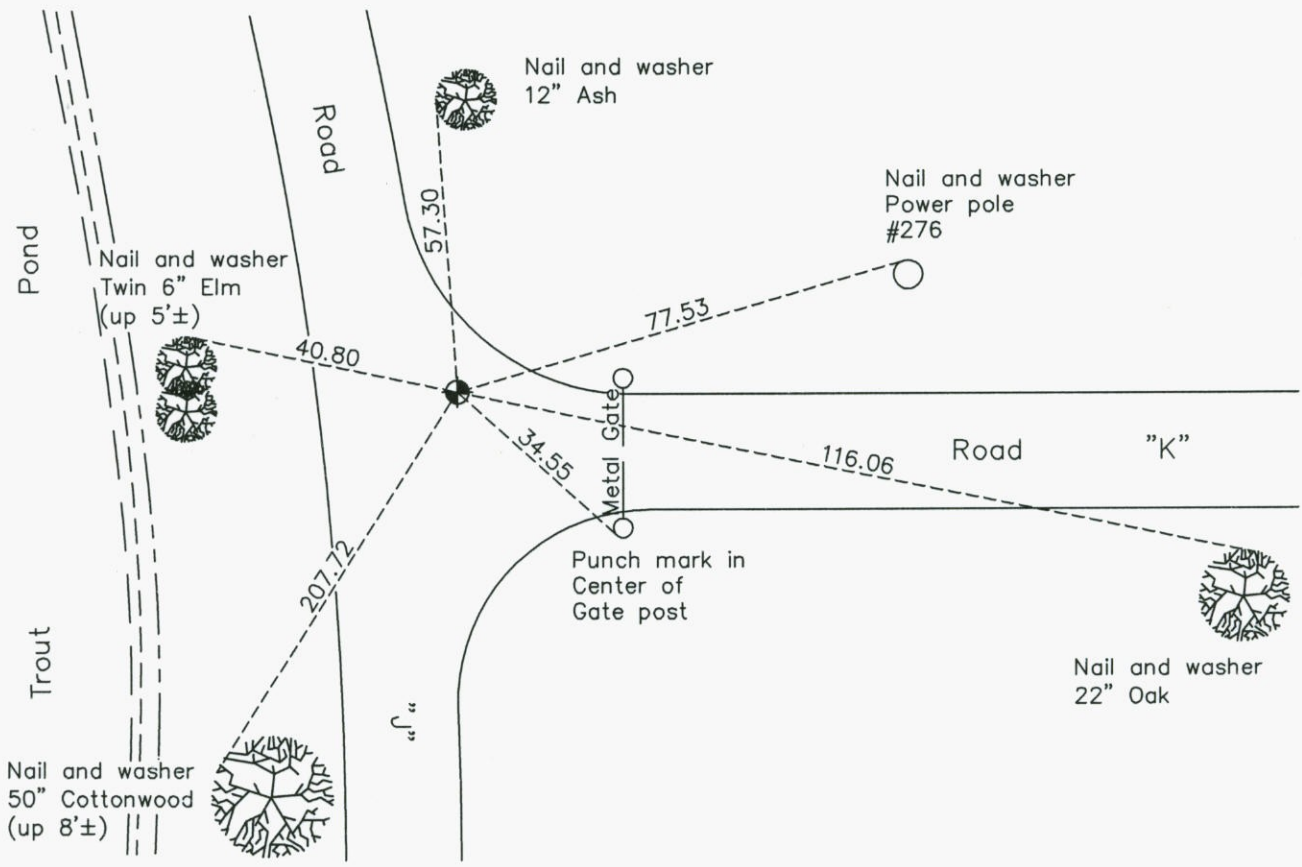
(On south line of SW1/4)

On the 22nd day of September, 1987, the described corner was evidenced by area resurvey

and to perpetuate the location of said corner, at the exact location thereof, a permanent marker was placed consisting of a cast iron monument

AND on the 18th day of February, 2010, said permanent marker was found flush and the ties were updated

Updated reference ties are as shown below.



Revision Date

5/25/10

N.A.D. 1983 Coordinates
(1996 Adjustment)

County Project Coordinates	
Northing	137828.3704
Easting	491753.5972
Date	8/16/01

I hereby certify that this United States public land survey monument record is correct and complete to the best of my knowledge and belief.

Date 5/25/10

Larry D. Hoium, Anoka County Surveyor
 Minnesota License Number 18165

CERTIFICATE OF LOCATION OF GOVERNMENT CORNER

Witness Corner *County of Anoka*

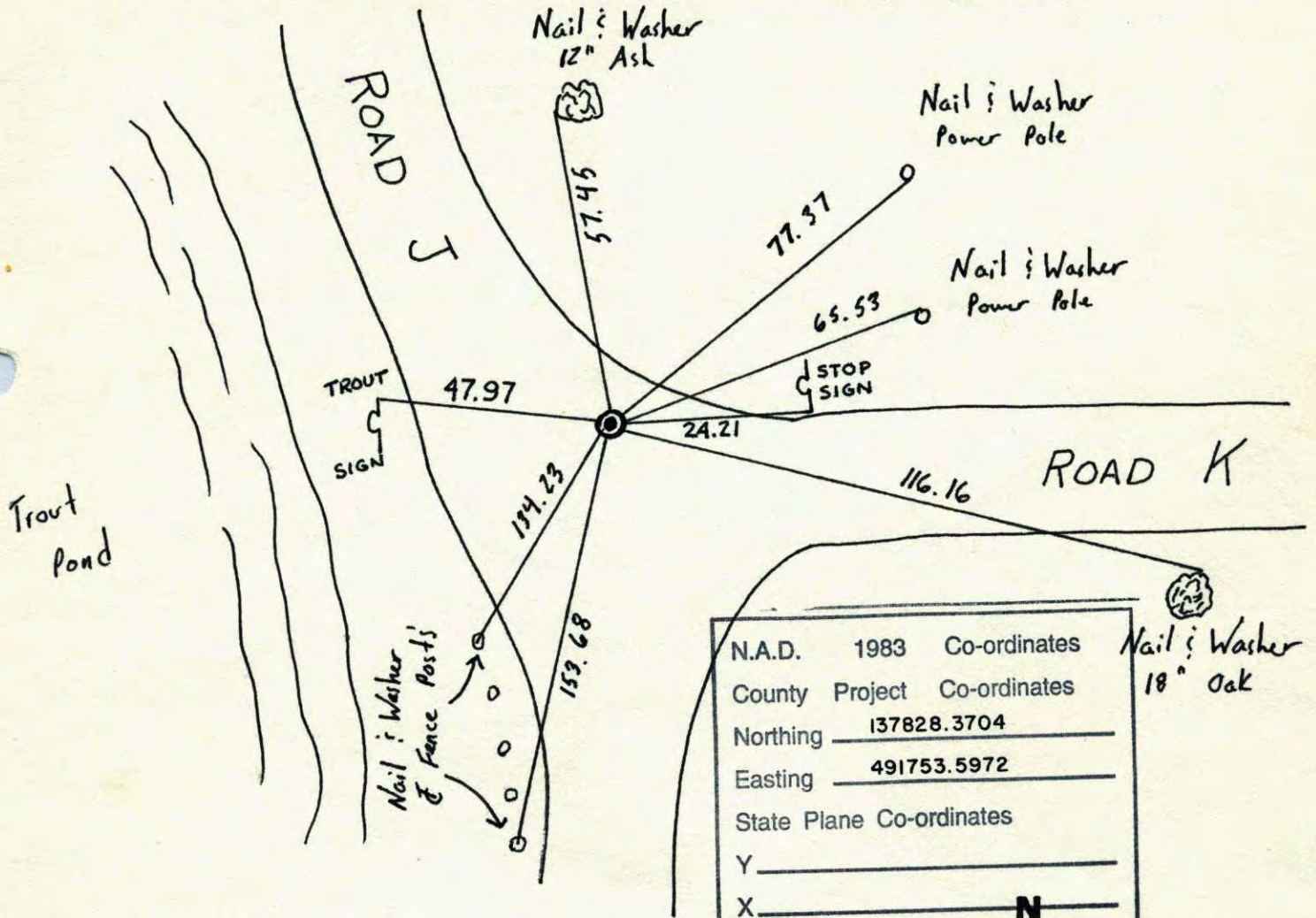
State of Minnesota

on South Line SW $\frac{1}{4}$ Corner of Sec. 26 Township 31 Range 24

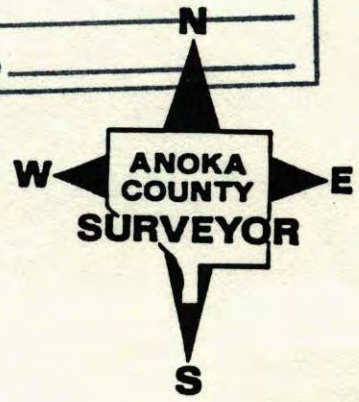
I hereby certify that on the 22 day of September, 1987, I found the described corner which was evidenced by Area Resurvey

and I further certify that to perpetuate the location of said corner, I did, at the exact location thereof, place a permanent marker consisting of Cast Iron Monument

which reference or witness monuments are located in the manner following:

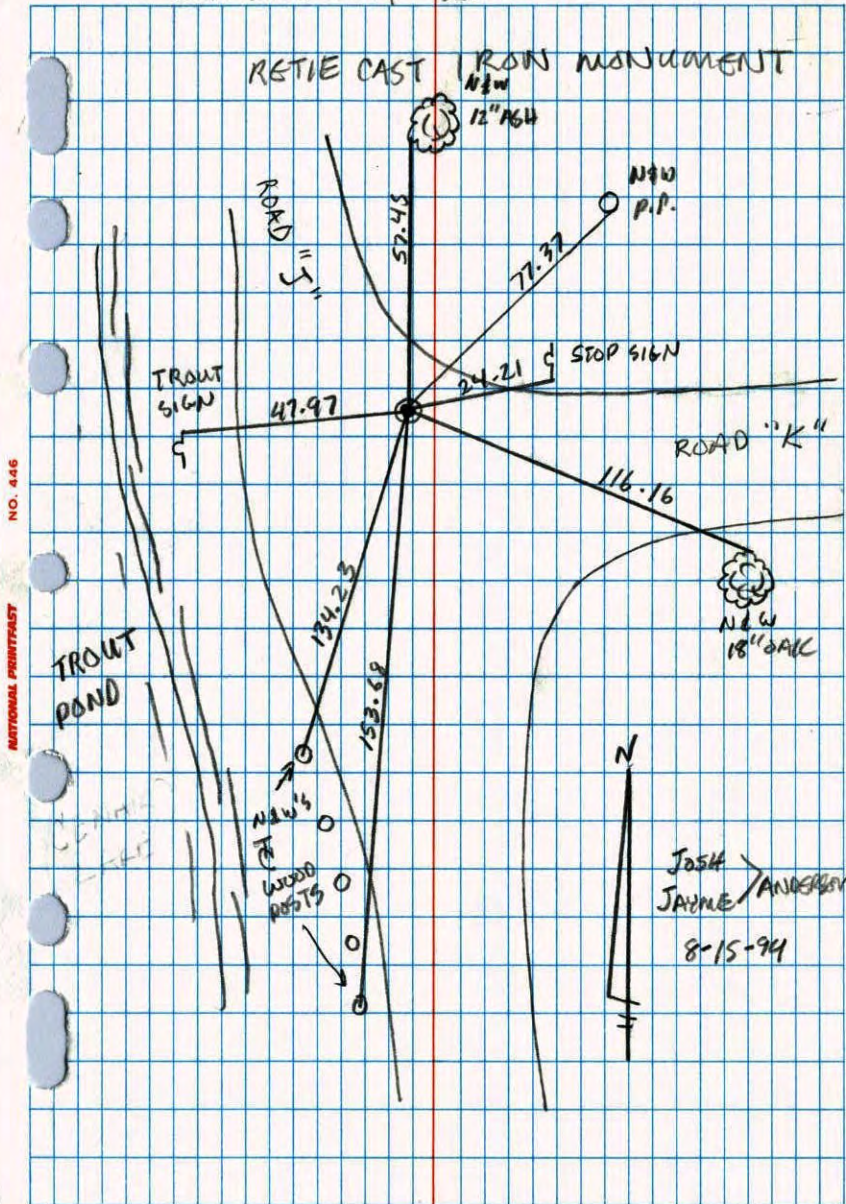


N.A.D.	1983	Co-ordinates
County	Project	Co-ordinates
Northing		<u>137828.3704</u>
Easting		<u>491753.5972</u>
State Plane Co-ordinates		
Y		_____
X		_____
Date		_____

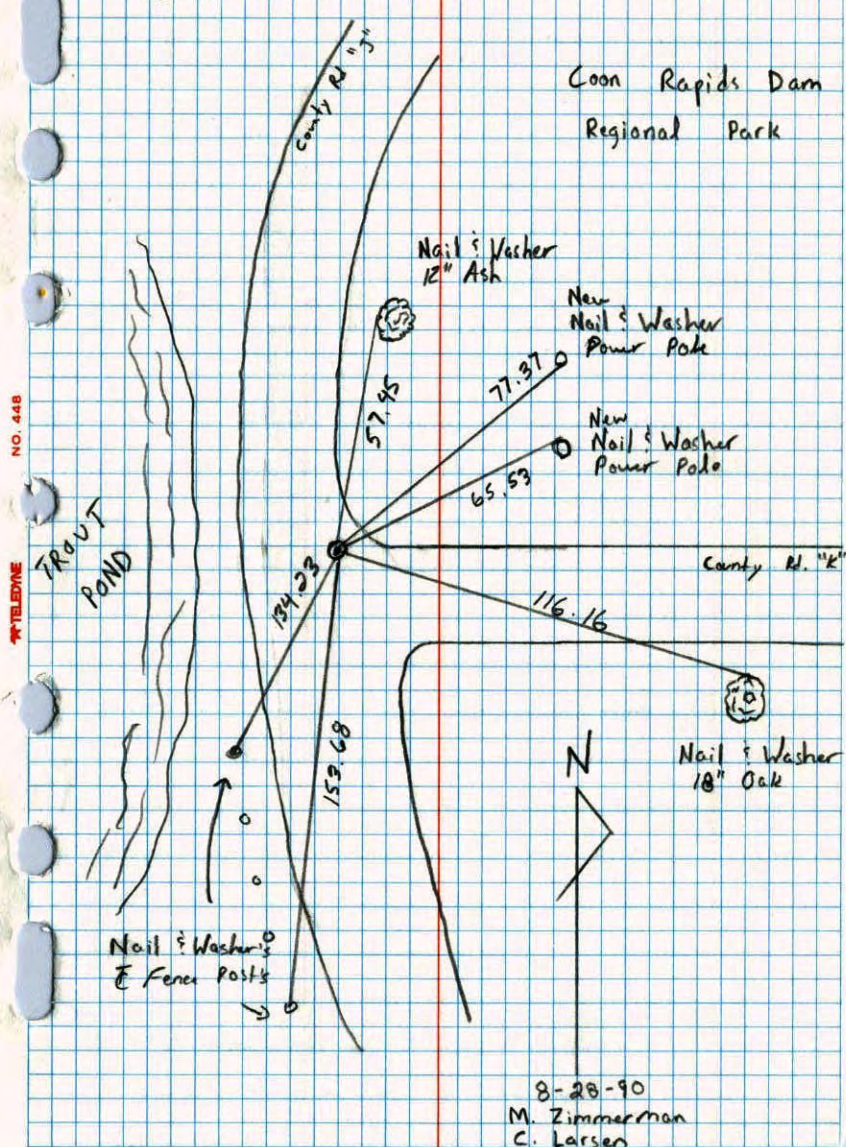


Revised date	Revised date	Revised date
<u>9-22-87</u>		
<u>3-3-88</u>		
<u>8-28-90</u>		
<u>8-15-94</u>		

WITNESS CORNER
ON SOUTH LINE SW 1/4 Sec. 26 T.31 R.24



Witness Corner on South Line of SW 1/4 Sec. 26 T.31 R.24
Retied Cast Iron Monument



INC ON SOUTH LINE OF SW 1/4 SEC. 26

T31 R24

SET SPIKE FROM AREA RESURVEY

W 5 72°

9-22-87

H. LARSON

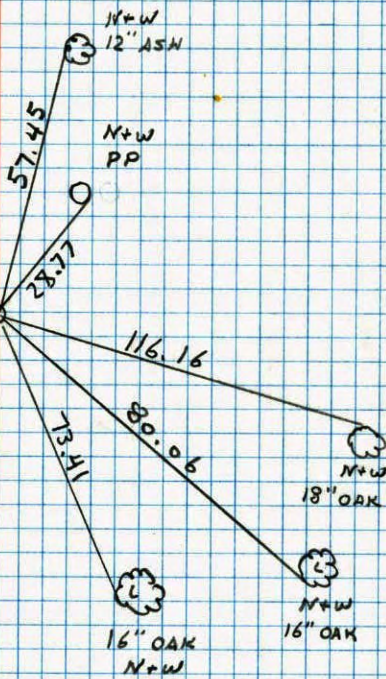
B. GUETZKO



TROUT

POND

75'±



NO. 448

TELEPHONE