

CERTIFICATE OF LOCATION OF GOVERNMENT CORNER

County of Anoka

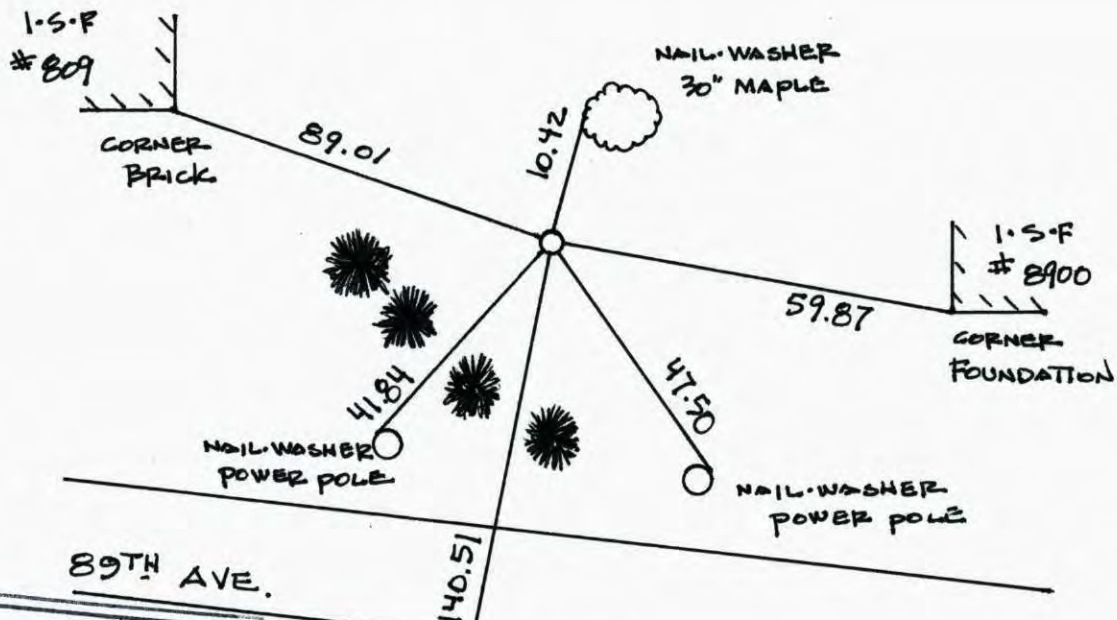
State of Minnesota

EAST 1/4 Corner of Sec. 35 Township 31 Range 24

I hereby certify that on the 25TH day of MARCH, 1963, I found the described corner which was evidenced by RESURVEY 3/4" I.P. FROM PLATTING

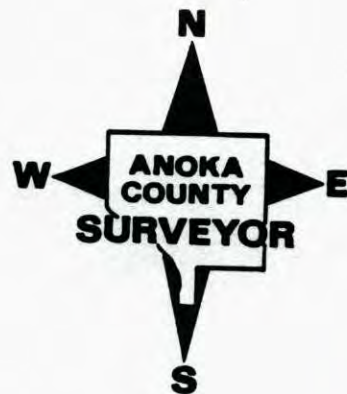
and I further certify that to perpetuate the location of said corner, I did, at the exact location thereof, place a permanent marker consisting of CAST IRON MONUMENT

which reference or witness monuments are located in the manner following:



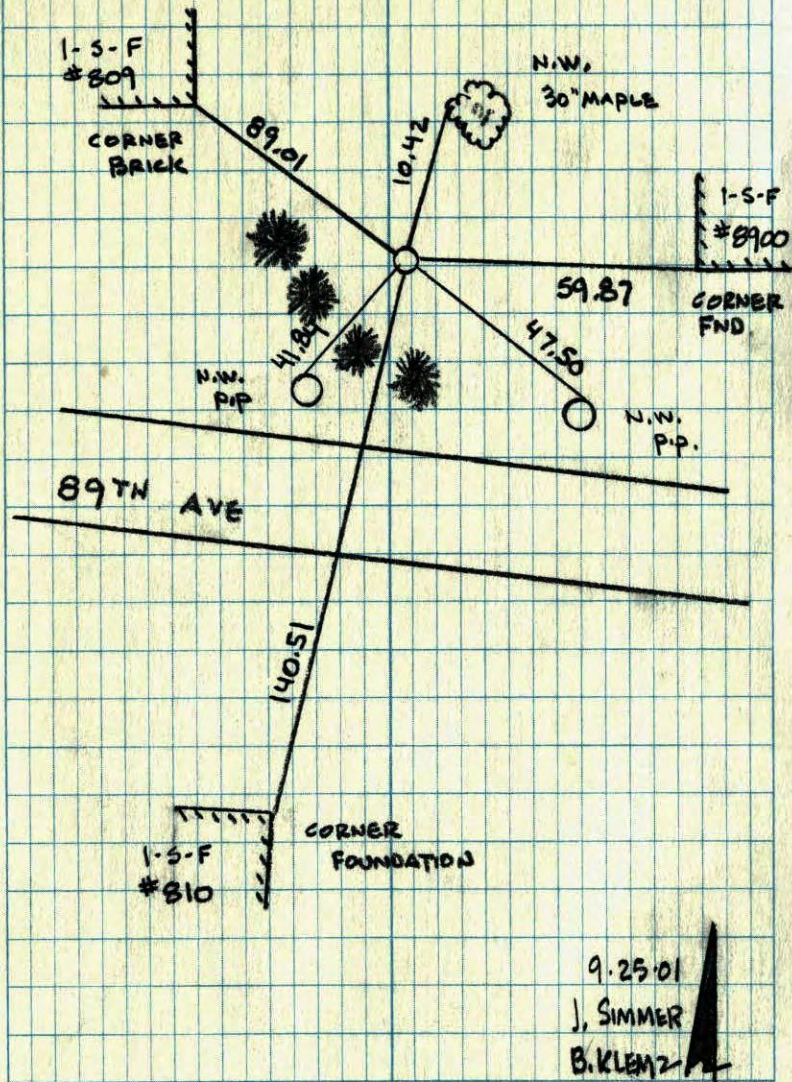
N.A.D.	1983	Co-ordinates
County	Project	Co-ordinates
Northing	<u>135120.6074</u>	
Easting	<u>494650.2744</u>	
State Plane Co-ordinates		
Y	_____	
X	_____	
Date	_____	

Revised date	Revised date	Revised date
<u>6-20-86</u>		
<u>2-1-88</u>		
<u>8-17-90</u>		
<u>8-15-94</u>		
<u>9-25-01</u>		



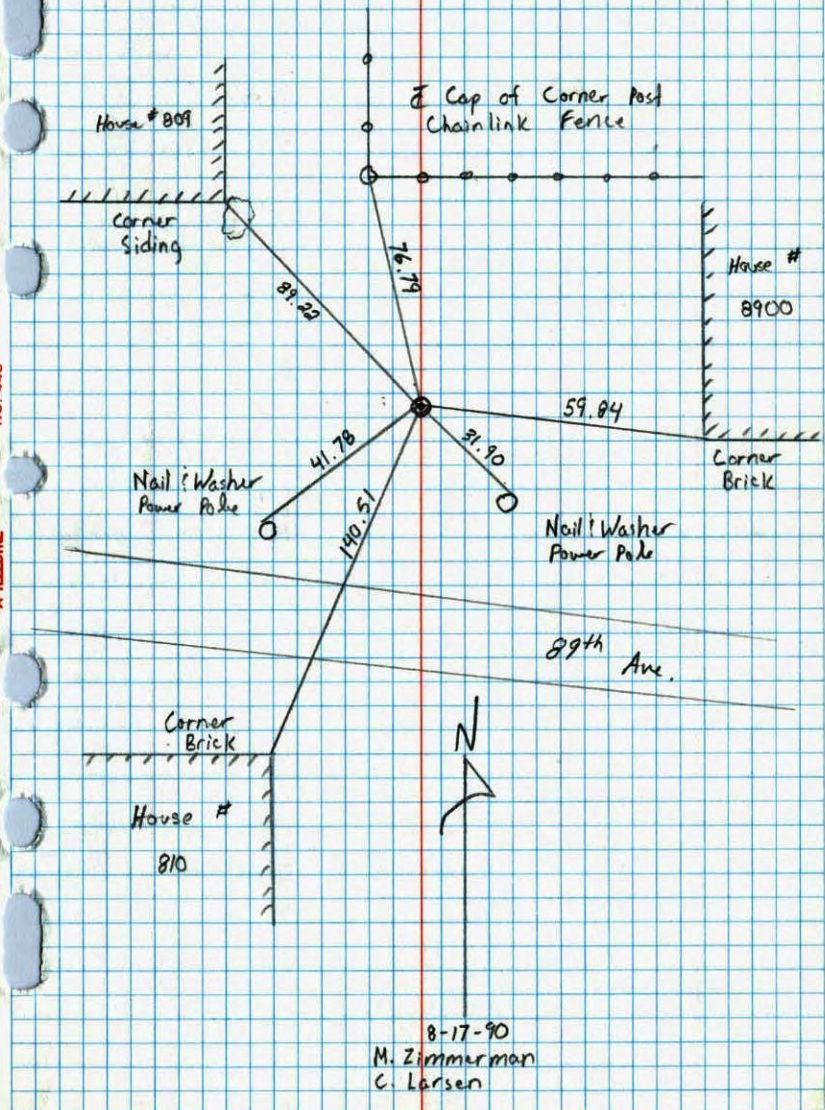
EAST 1/4 COR. SEC 35 T 31 R 24

GPS & RETIED CAST IRON MON.



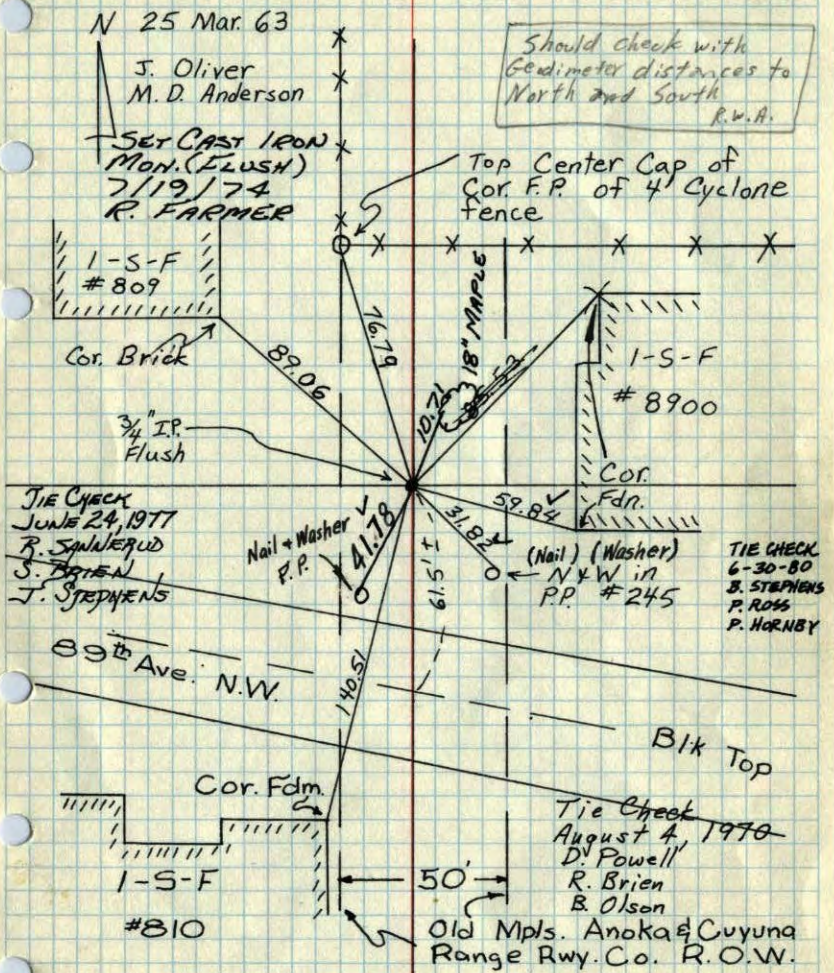
East 1/4 Corner Sec. 35 T31 R24

Retied Cast Iron Monument



E 1/4 Cor. Sec. 35, T 31, R 24

Set 3/4" I.P. from Platting

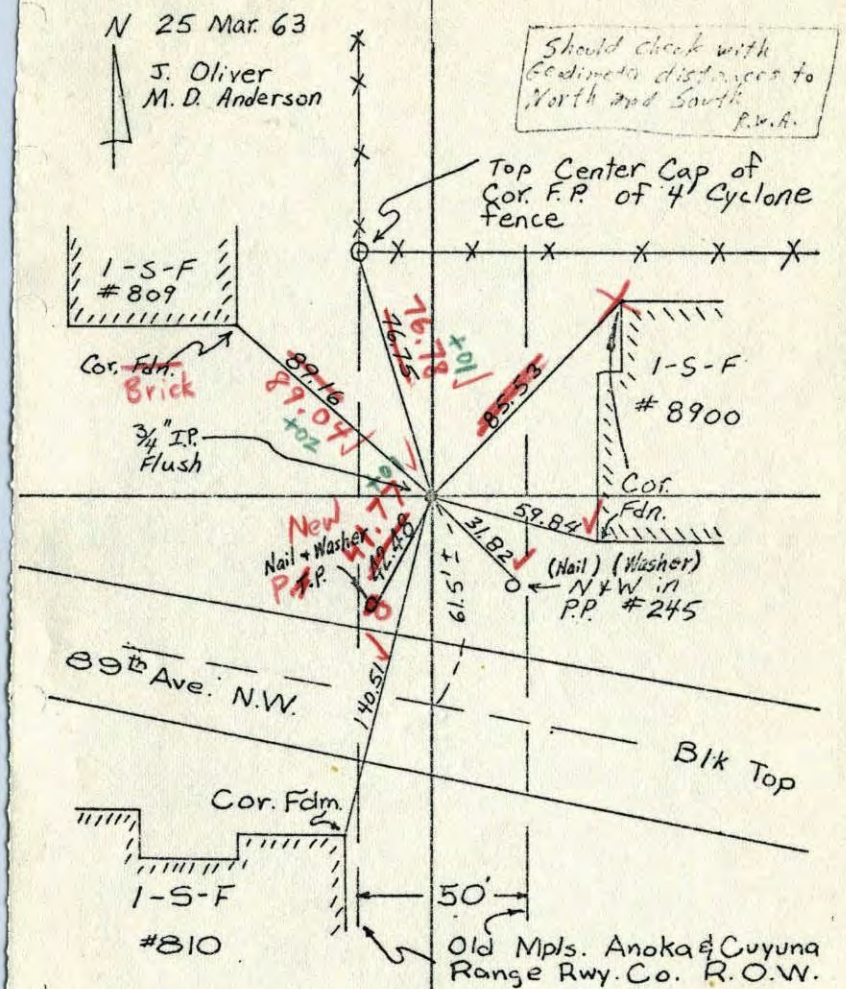


TEMPERATURE CORRECTED AND HORIZONTALLY TAPED MEASUREMENTS

ROLAND W. ANDERSON COUNTY SURVEYOR ANOKA COUNTY, MINNESOTA

E 1/4 Cor. Sec. 35, T 31, R 24

Set 3/4" I.P. from Platting



TEMPERATURE CORRECTED AND HORIZONTALLY TAPED MEASUREMENTS

ROLAND W. ANDERSON COUNTY SURVEYOR ANOKA COUNTY, MINNESOTA

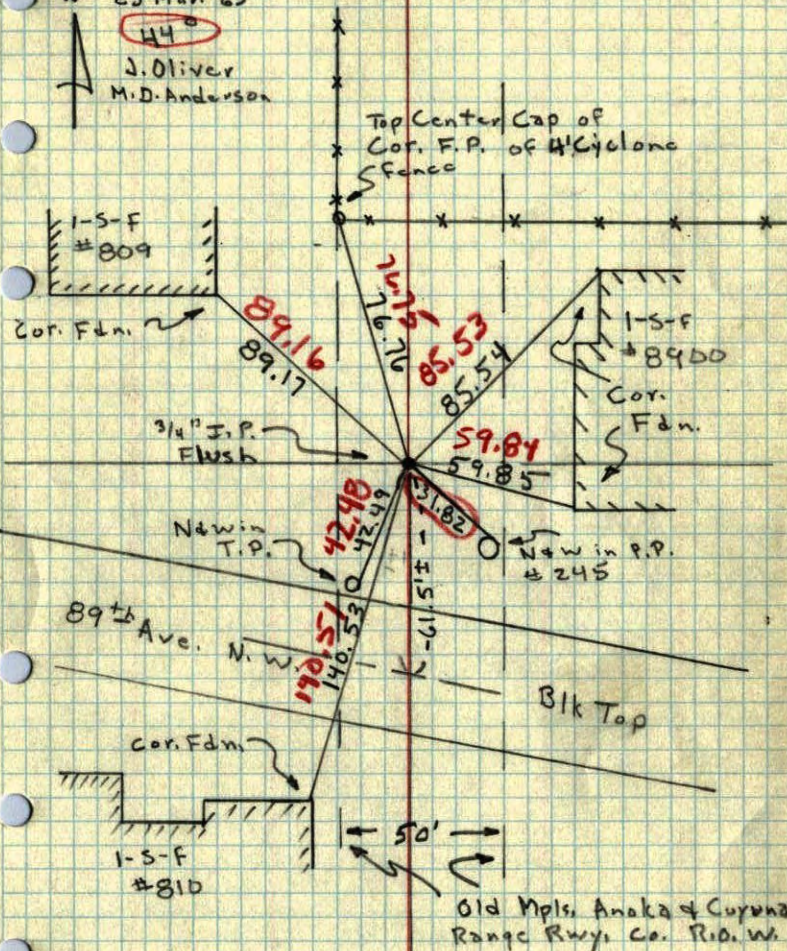
E 1/4 Cor. Sec. 35, T 31, R 24

Set 3/4" I.P. from Platting.

N 25 Mar. 63

44°

J. Oliver
M.D. Anderson



TEMPERATURE CORRECTED
AND HORIZONTALLY
TAPED MEASUREMENTS

ROLAND W. ANDERSON
COUNTY SURVEYOR
ANOKA COUNTY, MINNESOTA