

# CERTIFICATE OF LOCATION OF GOVERNMENT CORNER

County of Anoka

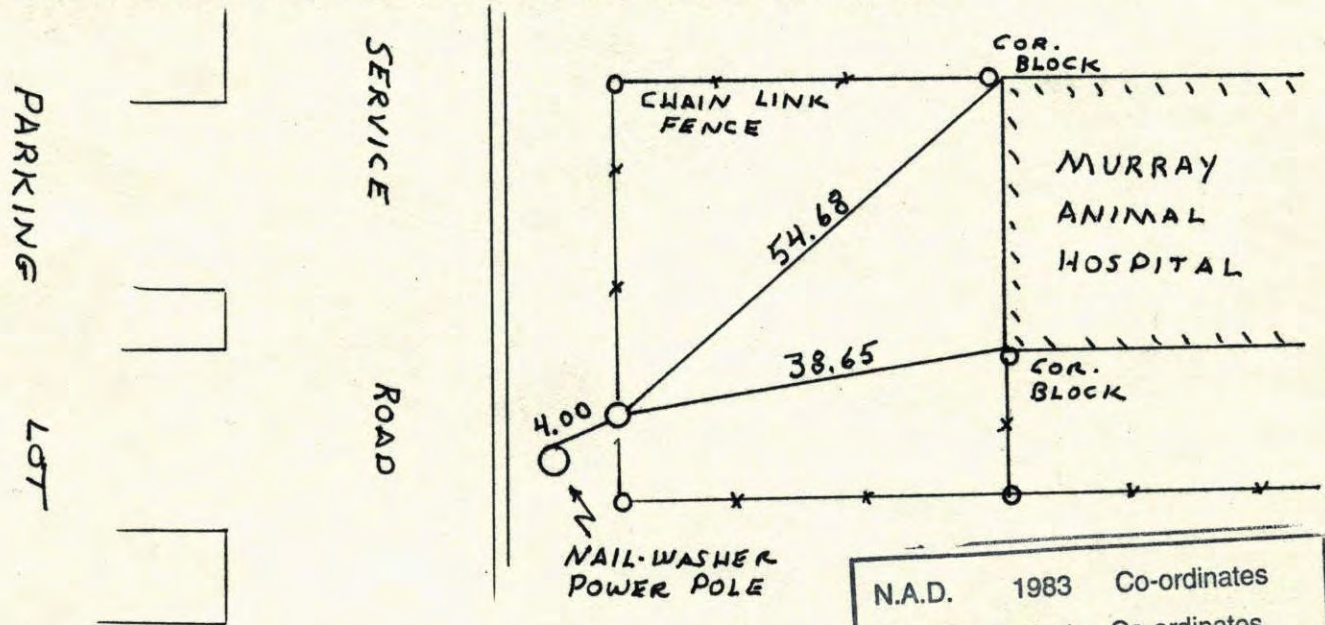
State of Minnesota

EAST 1/4 Corner of Sec. 36 Township 31 Range 24

I hereby certify that on the 5 day of AUGUST, 1960, I found the described corner which was evidenced by CONCRETE MONUMENT

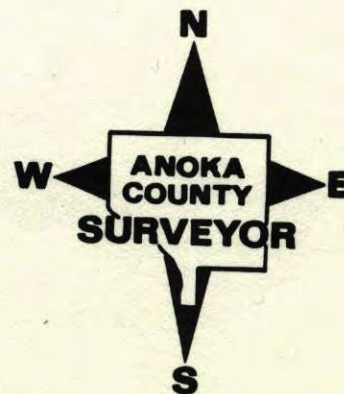
and I further certify that to perpetuate the location of said corner, I did, at the exact location thereof, place a permanent marker consisting of CAST IRON MONUMENT

which reference or witness monuments are located in the manner following:



N.A.D.	1983	Co-ordinates
County	Project	Co-ordinates
Northing		<u>135189.7305</u>
Easting		<u>499950.1049</u>
State Plane Co-ordinates		
Y		_____
X		_____
Date _____		

	Revised date	Revised date	Revised date
HL	<u>6-5-98</u> <u>REPLACED</u>		
	<u>12-15-98</u>		



E 1/4 CORNER SECTION 36 T31 R24

RETIED CONCRETE MONUMENT. DOWN 1'

4-12-96  
H. LARSON  
B. KLEINZ

SHOPPING  
CENTER

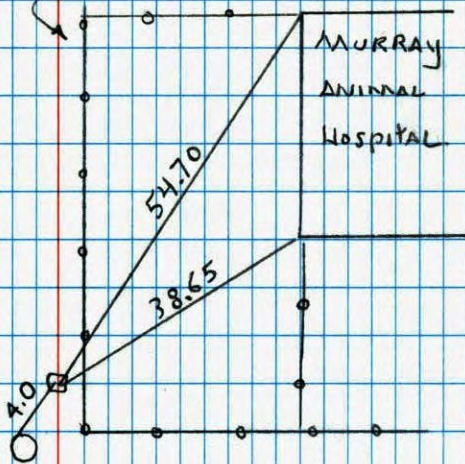
SERVICE ROAD

N+W  
P.P.

CHAIN LINK FENCE

MURRAY  
ANIMAL  
HOSPITAL

PARKING  
LOT



NATIONAL PRINTING NO. 446 TELETYPE

East 1/4 Corner Sec. 36 T31 R24

Retied Concrete Monument

Chain-link  
Fence

Corner  
Foundation

Pet Hospital

Corner of  
Foundation

Nail & Washer  
Power Pole

Nail & Washer  
Power Pole

Dirt Road

Nail & Washer  
16" Oak

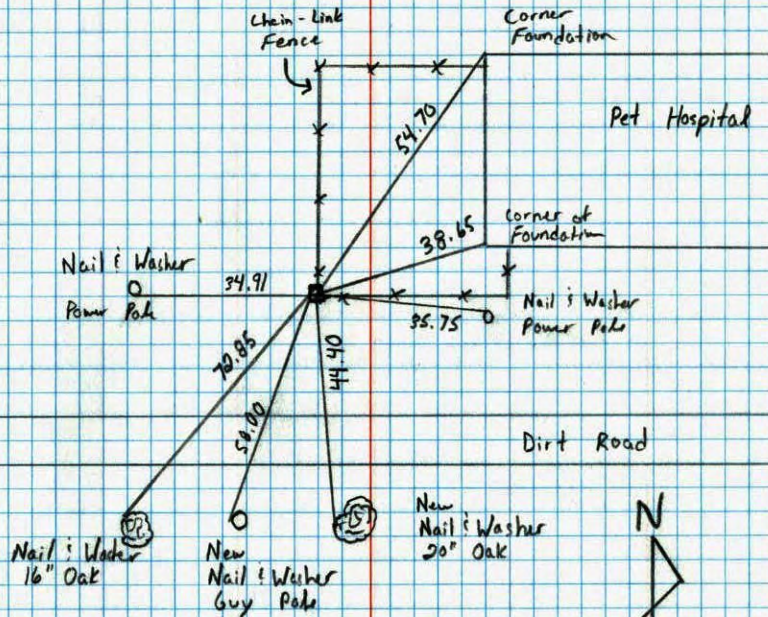
New  
Nail & Washer  
Guy Pole

New  
Nail & Washer  
20" Oak



8-27-90  
M. Zimmerman  
C. Larson

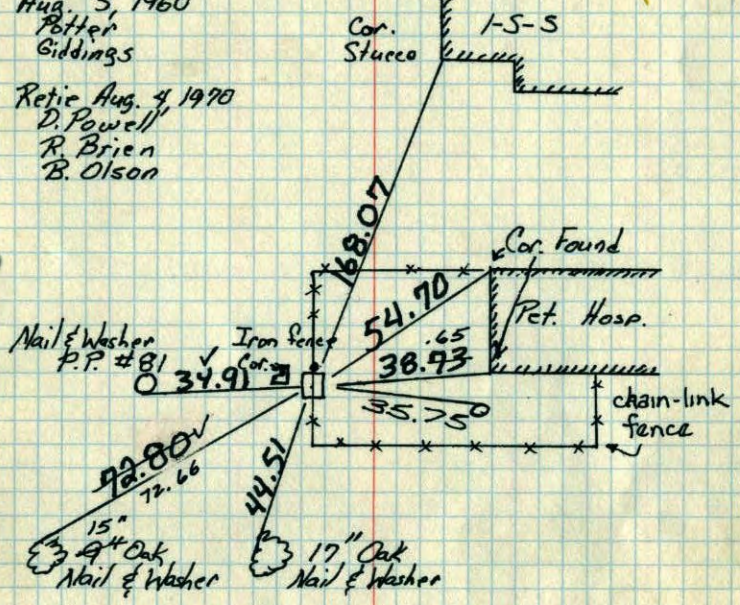
NATIONAL PRINTING NO. 446 TELETYPE



E 1/4 Cor. Sec. 36 - T31 - R24

Conc. Mon. (down 0.4'±)  
Iron on North Side  
Conc. mon. under chain link fence

Aug. 5, 1960  
Potter  
Giddings  
Retie Aug. 4, 1970  
D. Powell  
R. Brien  
B. Olson



TIE CHECK  
7/19/74  
R. FARMER  
N.D.  
D.D.

TIE CHECK  
JUNE 24, 1977  
R. SANJERUD  
S. BRIEN  
J. STEPHENS

TIE CHECK  
7-9-80  
B. STEPHENS  
P. ROSS  
P. HORNBY

ROLAND W. ANDERSON  
COUNTY SURVEYOR  
ANOKA COUNTY, MINNESOTA

TEMPERATURE CORRECTED  
AND HORIZONTALLY  
TAPED MEASUREMENTS

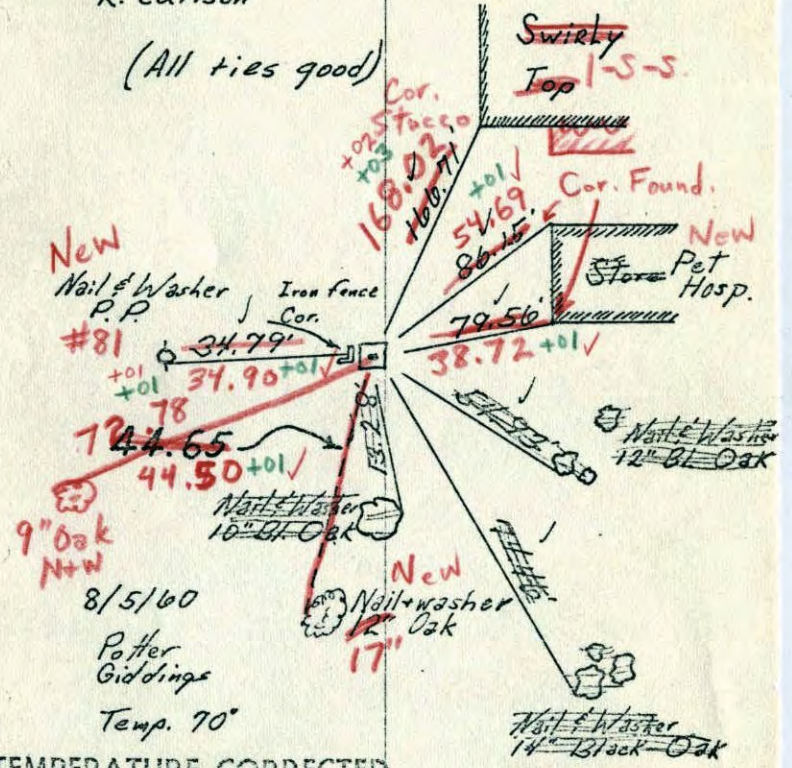
E 1/4 Cor. Sec 36, T31, R24

Conc. Mon. ~~Foot~~ (down .4')  
Iron on North Side

New tie---

Ties checked June 3, 1964  
M.D. Anderson  
R. Carlson

(All ties good)



New  
Nail & Washer  
P.P.  
#81

9" Oak  
N+W

8/5/60  
Potter  
Giddings  
Temp. 70°

TEMPERATURE CORRECTED  
AND HORIZONTALLY  
TAPED MEASUREMENTS

8/4/70  
#10-80°  
D. Powell  
R. Brien  
S. Olson

Tie Check  
July 11, 1966  
H. Larson  
D. Potter

ROLAND W. ANDERSON  
COUNTY SURVEYOR  
ANOKA COUNTY, MINNESOTA

86

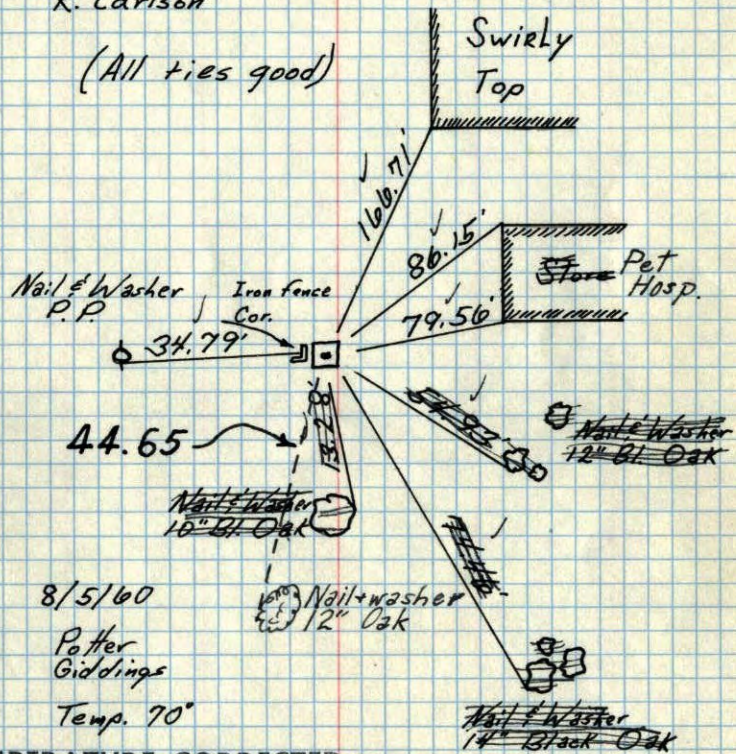
E 1/4 Cor. Sec 36, T31, R24

Conc. Mon. Flush (down 4')  
Iron on North Side

New tie----

Ties checked June 3, 1964  
M.D. Anderson  
R. Carlson

(All ties good)



8/5/60  
Potter  
Giddings  
Temp. 70°

TEMPERATURE CORRECTED  
AND HORIZONTALLY  
TAPED MEASUREMENTS

Tie Check  
July 11, 1966  
H. Larson  
D. Potter

ROLAND W. ANDERSON  
COUNTY SURVEYOR  
ANOKA COUNTY, MINNESOTA

49594.8

E 1/4 Sec. 36, T31, R24

Con. Mon. Flush

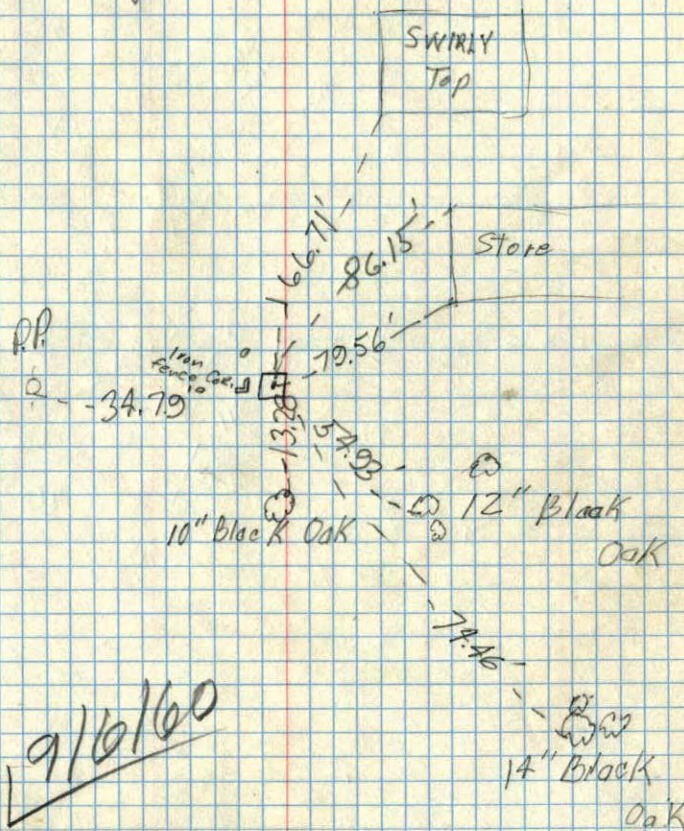
Iron on North Side

Aug. 5, 1960

Temp. 70°

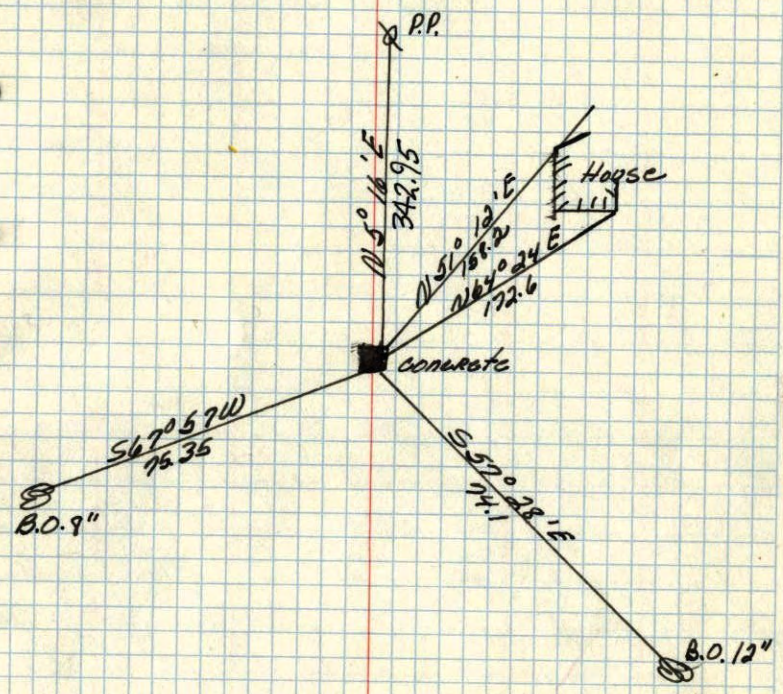
D. Potter

R. Giddings



9/6/60

E 1/4 corner of Sec. 36 T. 31, R. 24  
Concrete Monument



July 6, 1943  
Cartwright