

CERTIFICATE OF LOCATION OF GOVERNMENT CORNER

County of Anoka

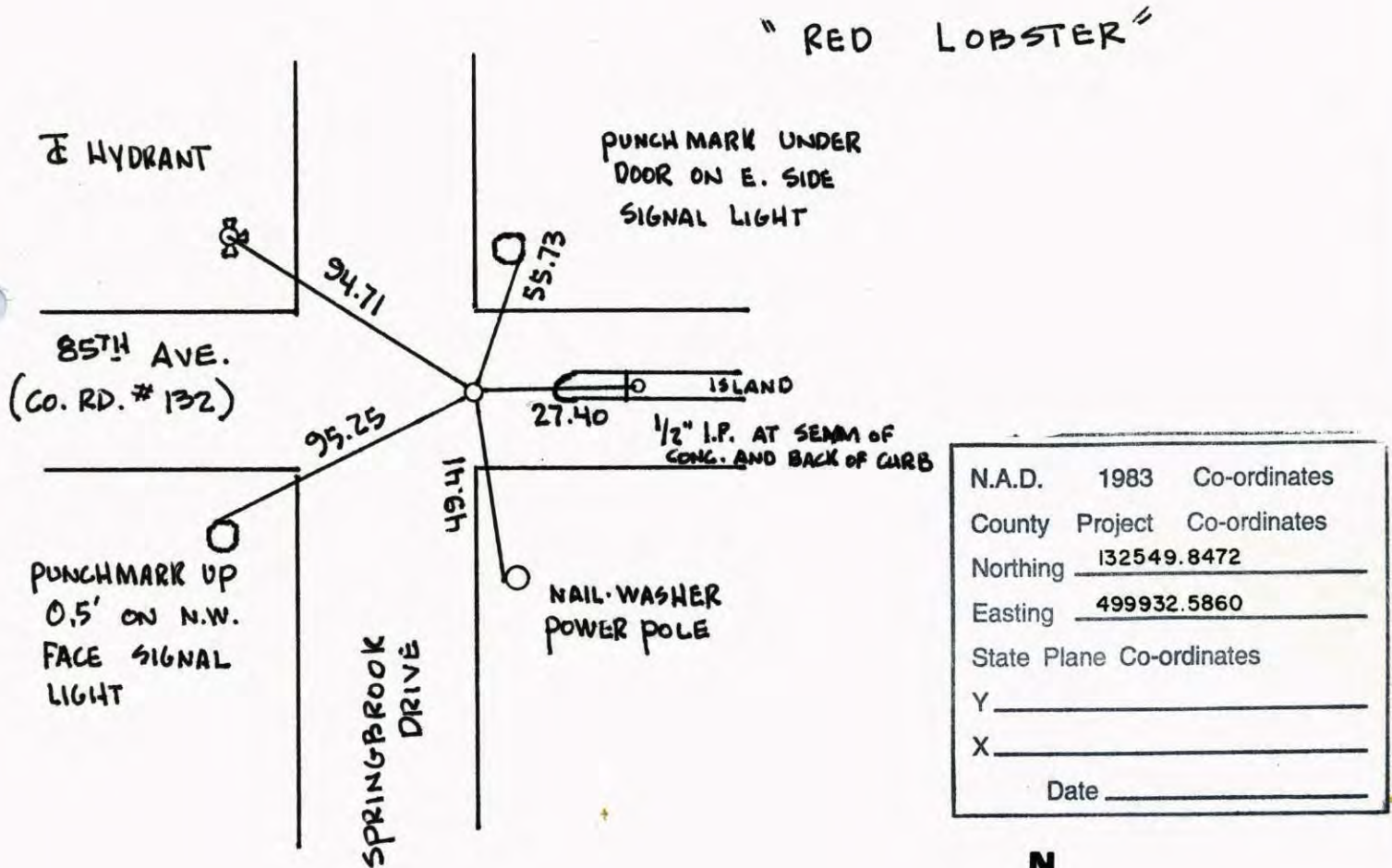
State of Minnesota

SOUTHEAST Corner of Sec. 36 Township 31 Range 24

I hereby certify that on the 20TH day of MARCH, 1943, I found the described corner which was evidenced by 4" x 8" LIMESTONE MONUMENT

and I further certify that to perpetuate the location of said corner, I did, at the exact location thereof, place a permanent marker consisting of CAST IRON MONUMENT

which reference or witness monuments are located in the manner following:



Revised date	Revised date	Revised date
5-23-82		
6-13-86		
8-27-90		
12-9-93		
8-15-94		
7-29-99		



SE. COR. SEC 36 T 31 R 24

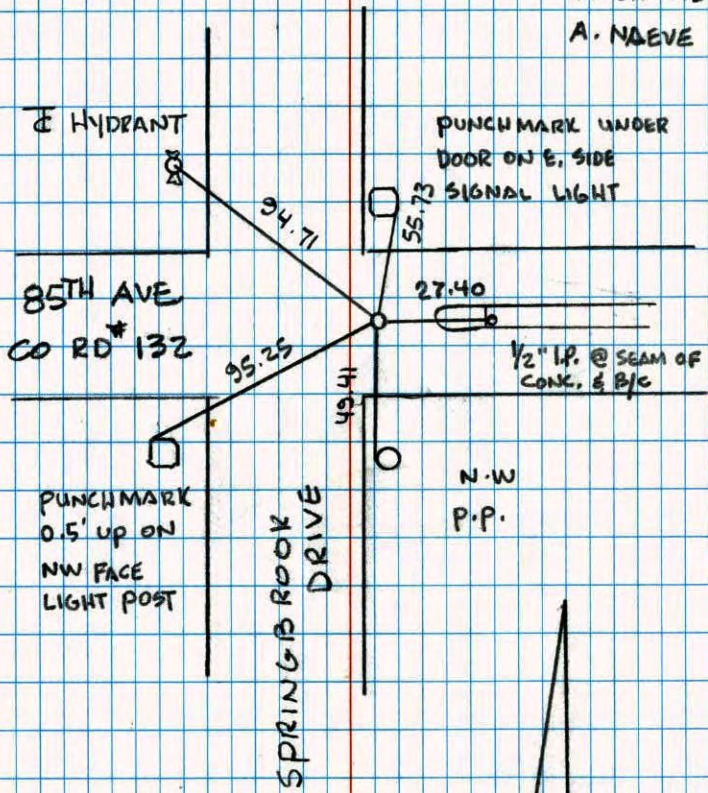
RETIED CAST IRON MON.

7.29-99

J. SIMMER

T. SCHWAP

A. NAEVE



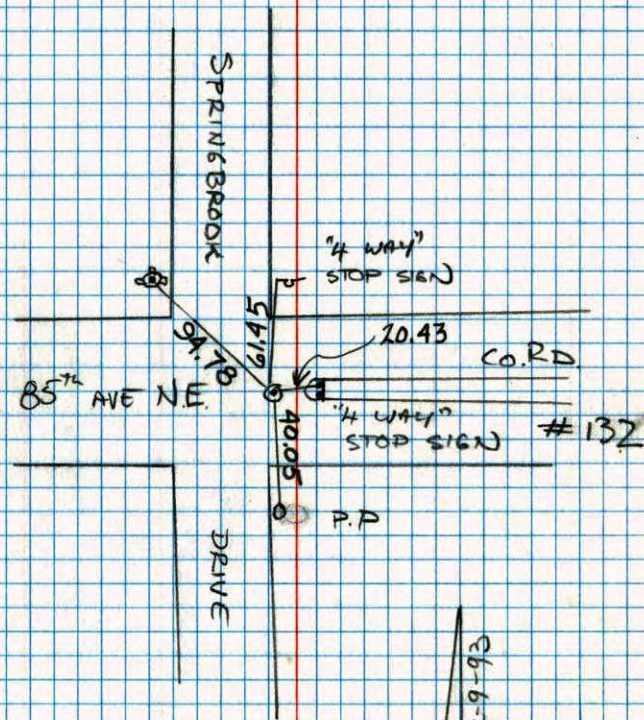
NO. 446

NATIONAL PRINTFAST

Southeast 1/4 S36 T31 R24

REPLACE & RETIE

CAST IRON MONUMENT



NO. 448

TELETYPE

B. KLEIMZ

M. STEWART

6-6-93
R-9-93

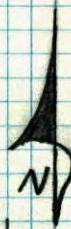
S.E. Cor. Sec. 36 T-31 R-24

Reset C.I. Flush P.K.s 2' N&E

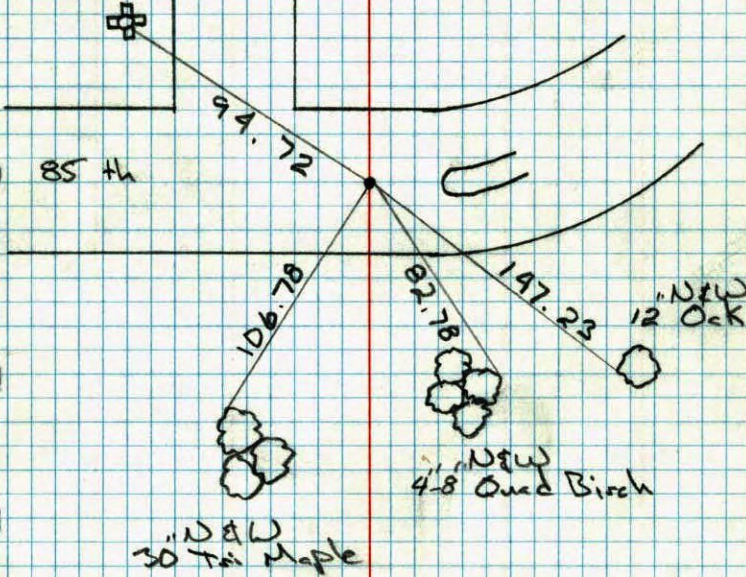
8-19-69
D. Powell
R. Olson
R. Brien

Retied
10-12-81
H. Larson
B. Guetzko
D. Naglak

Reset C.I.
Flush P.K. 2' N&E
5-23-82
P. Ross
B. Nicholas



F of the Hydrant



NO. 448

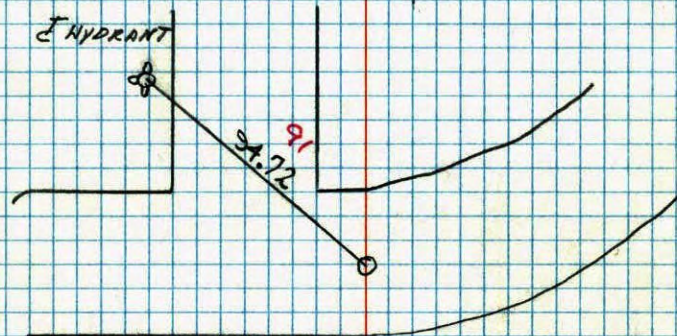
WYLEDYNE

CONSTRUCTION TIE FOR SE COR
SECTION 36 T31 R24

200' 60"
10-12-81
H. LARSON
B. GUETZKO
D. NAGLAK



F HYDRANT



NO. 448

WYLEDYNE

SE Cor. Sec. 36 - T31 - R24

Reset Cast Iron Monument flush.

PK Nails 2.00' North + East.

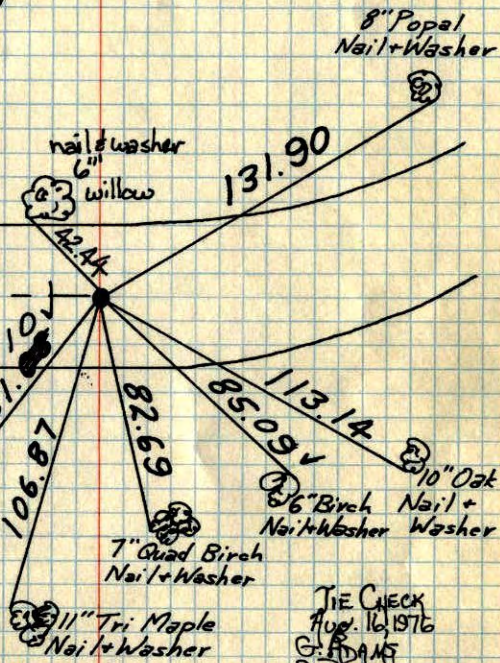
Aug. 19, 1969
D. Powell
R. Olson
R. Brien

Const. tie V
All ties O.K.
Removed C.I. Mon
M.D. Anderson
May 10, 1973

TIE CHECK
7/19/74
R. FARMER
N. D.
D. D.

85th Ave. NE

Power Pole
Nail + Washer



TIE CHECK
Aug. 16, 1976
G. ADAMS
R. BRIEN
J. STEPHENS

TEMPERATURE CORRECTED
AND HORIZONTALLY
TAPED MEASUREMENTS

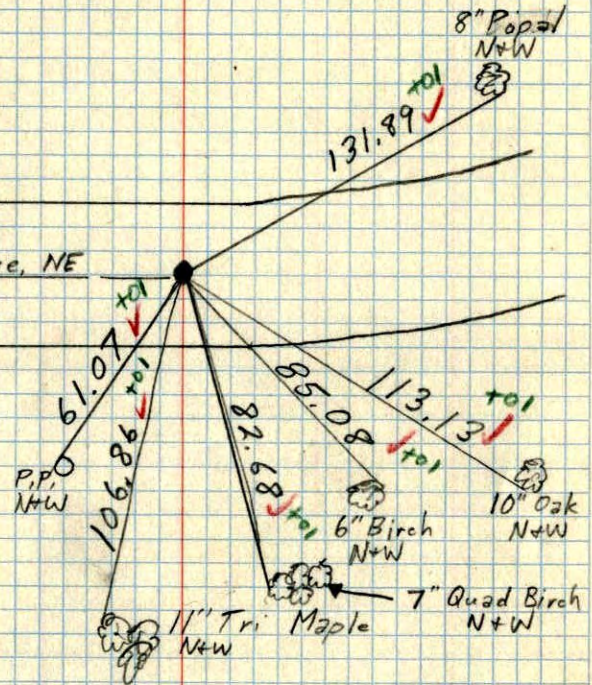
ROLAND W. ANDERSON
COUNTY SURVEYOR
ANOKA COUNTY, MINNESOTA

SE Cor. Sec. 36 - T31 - R24

Set, Removeable C.I. Mon. flush in
place of solid C.I.
PK's 2.00' N+E.

8/19/69
#5-72°
D. Powell
R. Olson
R. Brien

85th Ave. NE

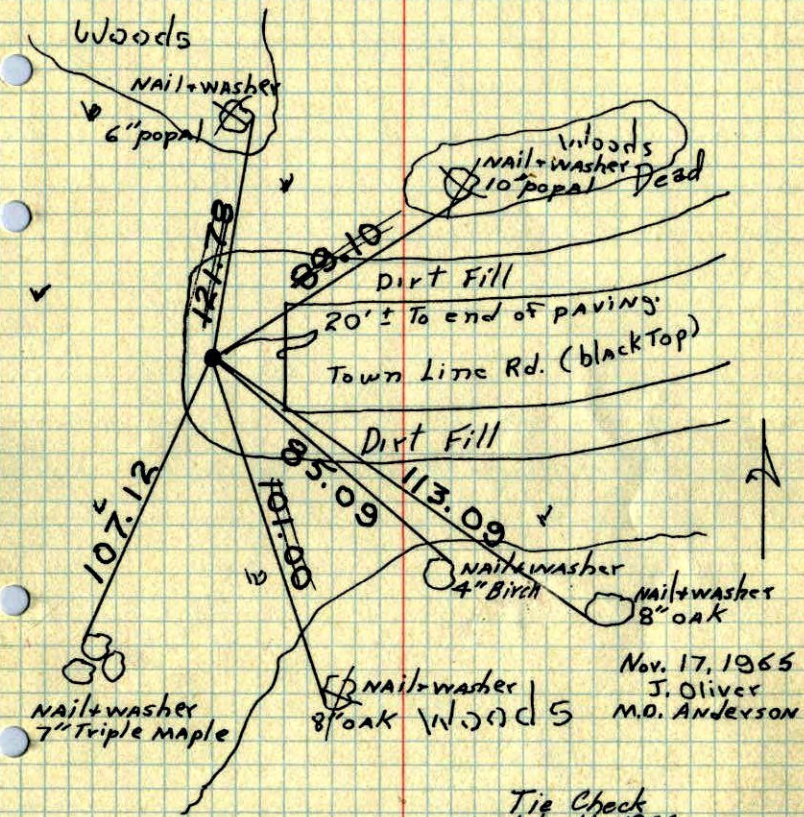


TEMPERATURE CORRECTED
AND HORIZONTALLY
TAPED MEASUREMENTS

ROLAND W. ANDERSON
COUNTY SURVEYOR
ANOKA COUNTY, MINNESOTA

S.E. Cor. Sec. 36 T31 R24

Replaced red and white iron pipe with cast iron monument. C.I. Flush



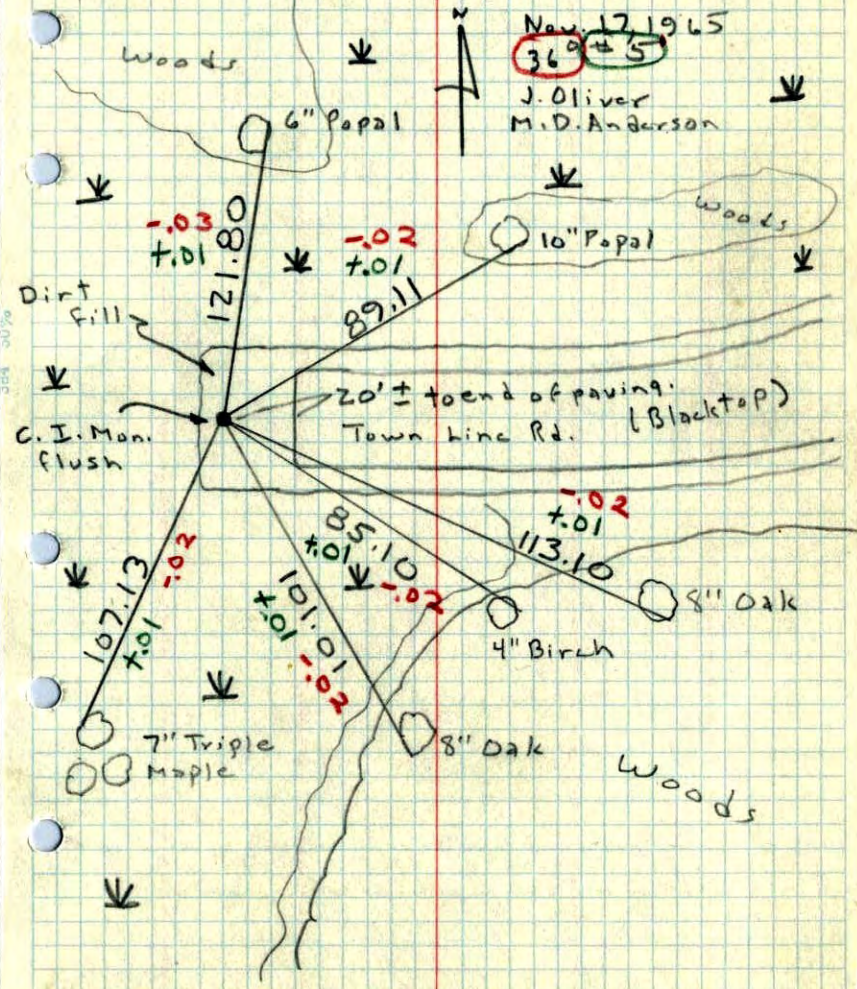
Tie Check
July 11, 1966
H. Larson
D. Potter

TEMPERATURE CORRECTED
AND HORIZONTALLY
TAPED MEASUREMENTS

ROLAND W. ANDERSON
COUNTY SURVEYOR
ANOKA COUNTY, MINNESOTA

SE Cor. Sec. 36, T31, R24

Replaced Red & White Iron Pipe with Cast Iron Monument. Pipe was bent and moved by road Const. Nails and washers in all tie trees.



SE Cor. Sec 36-T31-R24

1" x 8" Limestone
up 16"

Limestone Broken - Replaced with 7' x 1"
Iron Pipe with Top 4' painted with 6"

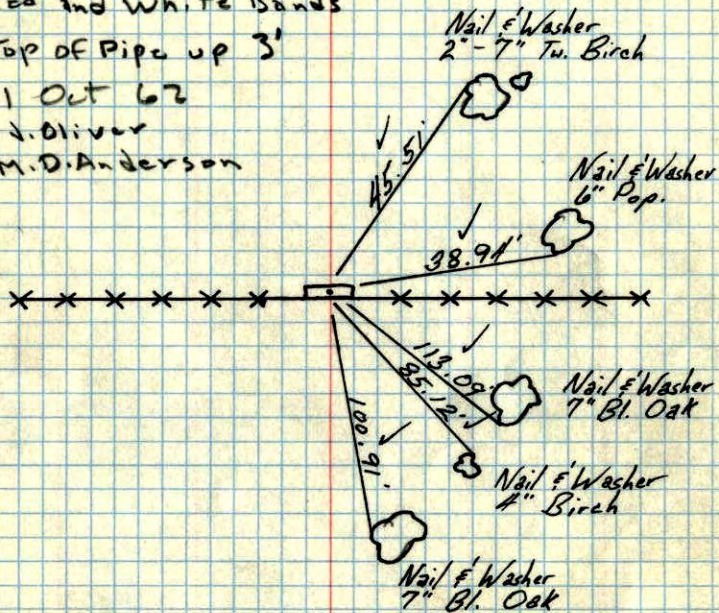
Red and White Bands

Top of Pipe up 3'

31 Oct 62

J. Oliver

M.D. Anderson



7/1/60

D. Poffe
R. Robinson

TEMPERATURE CORRECTED
AND HORIZONTALLY
TAPED MEASUREMENTS

ROLAND W. ANDERSON
COUNTY SURVEYOR
ANOKA COUNTY, MINNESOTA

Retie 9/2/64

M. D. Anderson
J. Dunlop

out
46856.1

In.

46879.3

out

46921.6

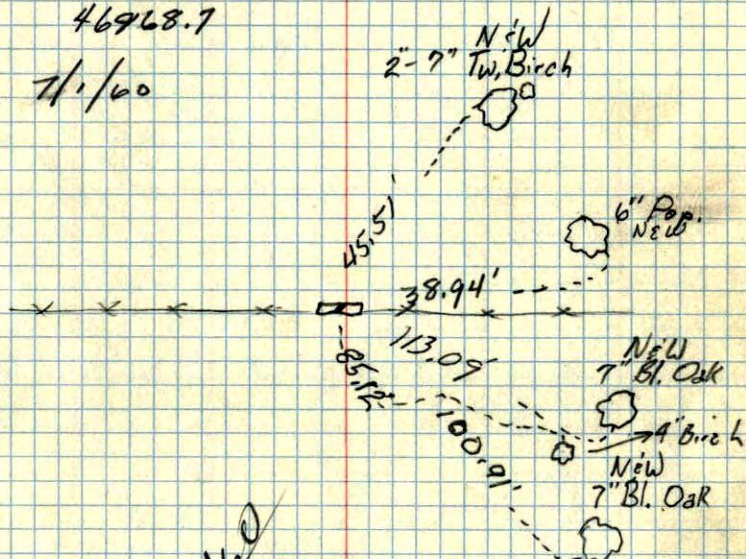
In

46968.7

7/1/60

SE. Cor. Sec. 36, T31, R24

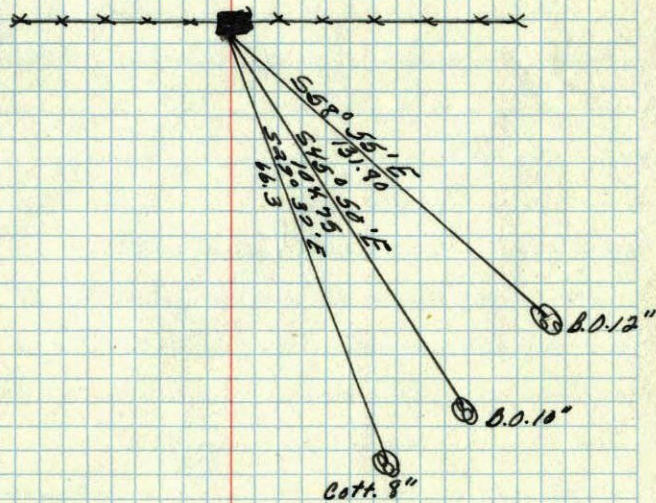
4" x 8" Limestone
up 16"



~~7/15/60~~
RR

SE corner of Sec. 36 T91 R24

Limestone 4"x8" up 16"



MAR. 20, 1943
Cartwright