

CERTIFICATE OF LOCATION OF GOVERNMENT CORNER

County of Anoka

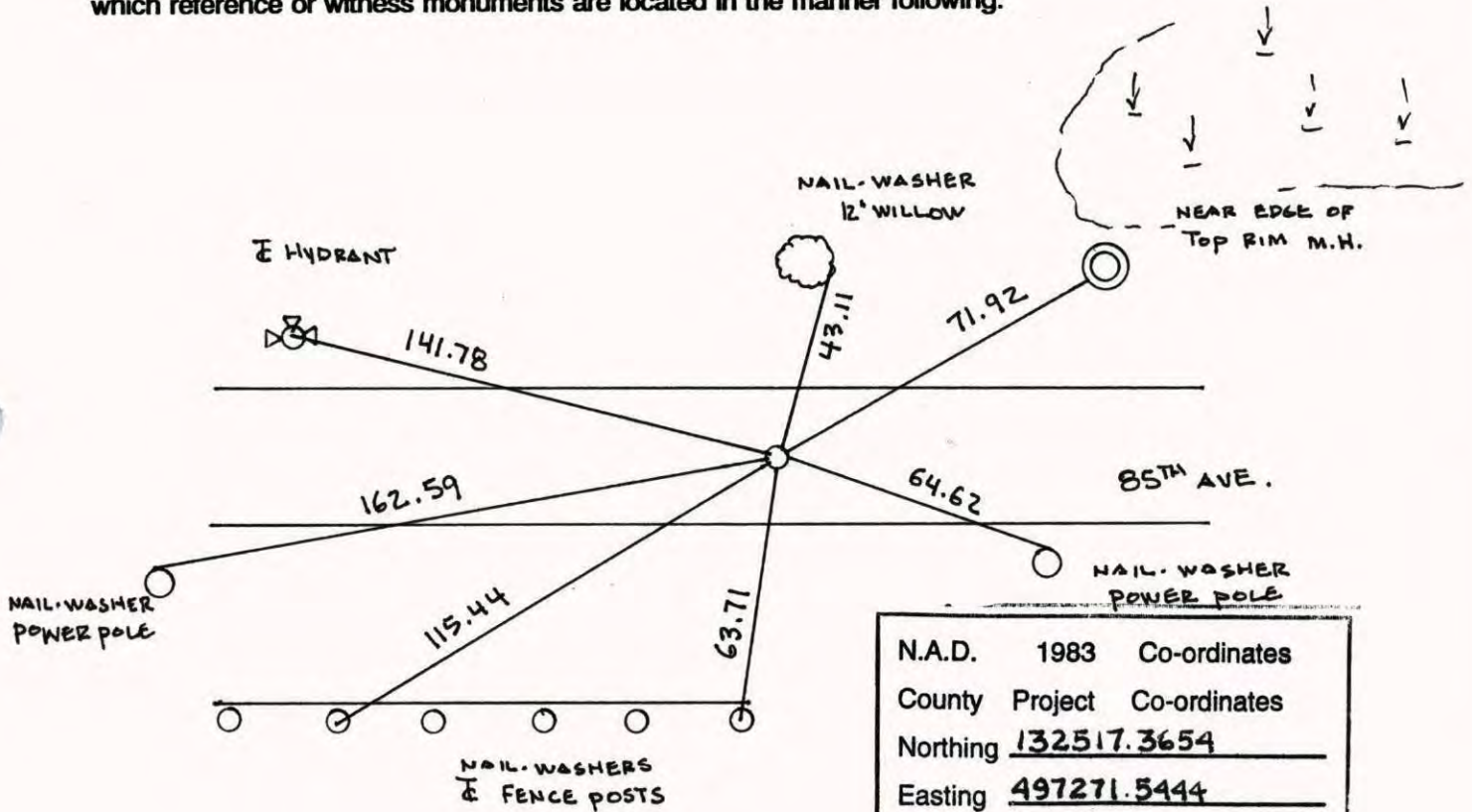
State of Minnesota

SOUTH $\frac{1}{4}$ Corner of Sec. 36 Township 31 Range 24

I hereby certify that on the 22ND day of MARCH, 1963, I found the described corner which was evidenced by SET FROM RESURVEY, RESET BY N.C. HOIVUM 12TH JUNE 1969

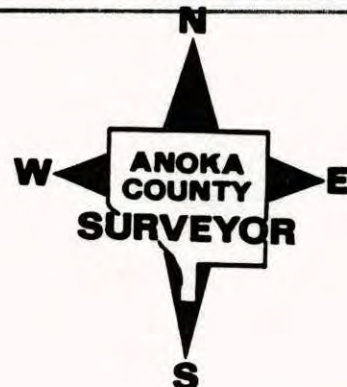
and I further certify that to perpetuate the location of said corner, I did, at the exact location thereof, place a permanent marker consisting of CAST IRON MONUMENT

which reference or witness monuments are located in the manner following:



N.A.D.	1983	Co-ordinates
County	Project	Co-ordinates
Northing		<u>132517.3654</u>
Easting		<u>497271.5444</u>
State Plane Co-ordinates		
Y		_____
X		_____
Date _____		

Revised date	Revised date	Revised date
6-12-86		
8-27-90		
8-15-94		
9-25-01		



S 1/4 Cor. Sec. 36 T-31 R-24

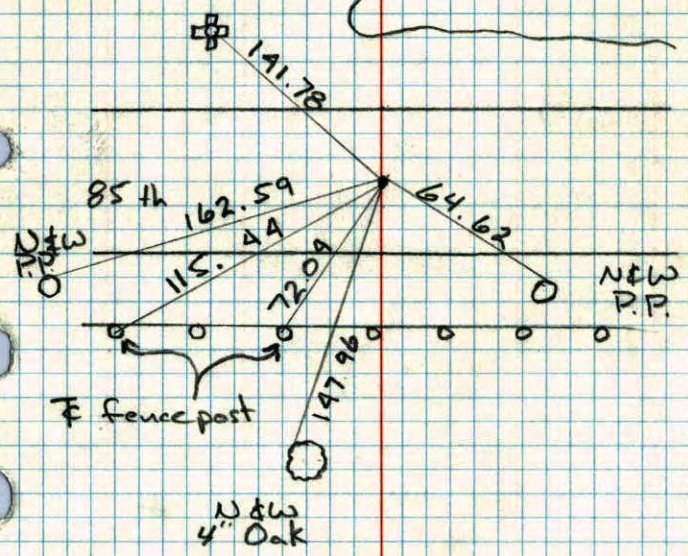
Replaced Iron Pipe with CI Flush
8-19-69

Relied
10-12-81
H. Larson
B. Gaetzko
D. Natch

Reset CI Flush
P.K. 2' N&E
6-8-82
P. Ross
B. Nicholas
J. Baler

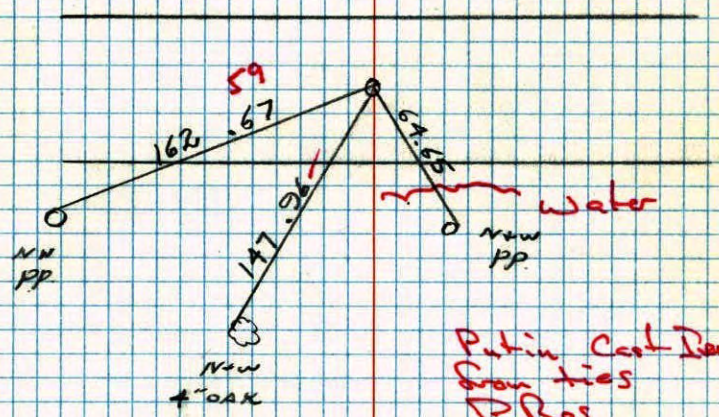


F of Hydrant



CONSTRUCTION TIES FOR S 1/4 COR.
SECTION 36 T31 R24

200' 58"
10-12-81
H. LARSON
B. GAETZKO
D. NAGLAK



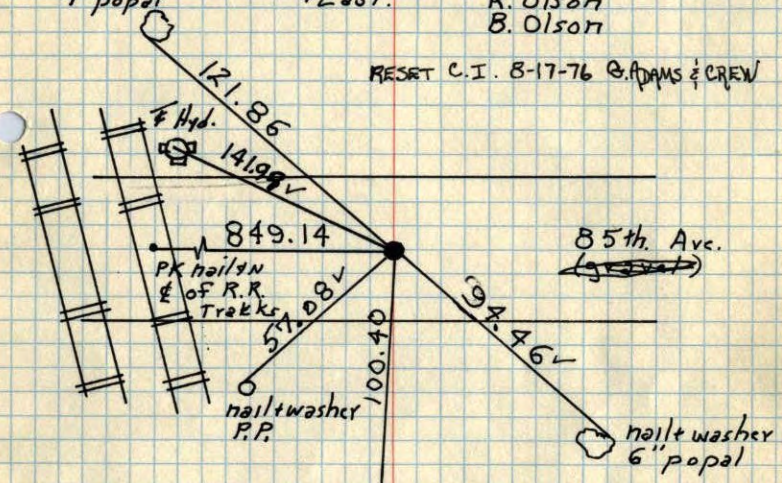
Put in Cor. Iron
Gran. ties
P. Ros
B. Nicholas
J. Baler

S 1/4 Cor. Sec. 36 T31 R24

Tied 1" iron pipe reset by N.C. Hoivum.
 1.p. down 0.1' ± Replaced Iron Pipe
 with Cast Iron Monument flush. 8/19/69
 6-12-69

nail + washer PK's 2.00' North
 7" popal + East. D. Powell
 R. Olson
 B. Olson

RESET C.I. 8-17-76 G. ADAMS & CREW



Const. tied
 All tie O.K.
 Removed C.I. Mon.
 May 10, 1975
 M. G. Anderson

TIE CHECK
 JULY 18, 1974
 R. FARMER
 N. D.
 D. D.

TIE CHECK
 Aug. 17, 1976
 G. ADAMS
 J. BRIEN
 J. STEPHENS

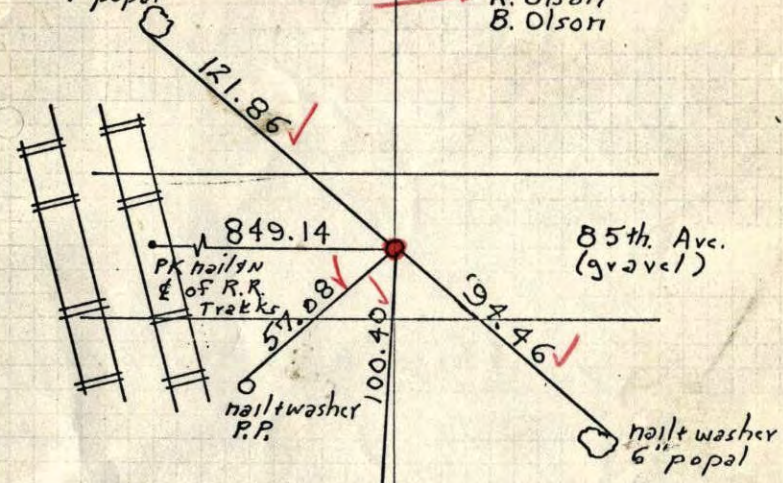
TEMPERATURE CORRECTED
 AND HORIZONTALLY
 TAPED MEASUREMENTS

ROLAND W. ANDERSON
 COUNTY SURVEYOR
 ANOKA COUNTY, MINNESOTA

S 1/4 Cor. Sec. 36 T31 R24

Tied 1" iron pipe Reset by N.C. Hoivum.
 1.p. down 0.1' ±
 Replaced Iron with C.I. Mon. flush.
 PK's 2.00' N+E. 8/19/69
 6-12-69

nail + washer PK's 2.00' N+E
 7" popal + East. D. Powell
 R. Olson
 B. Olson



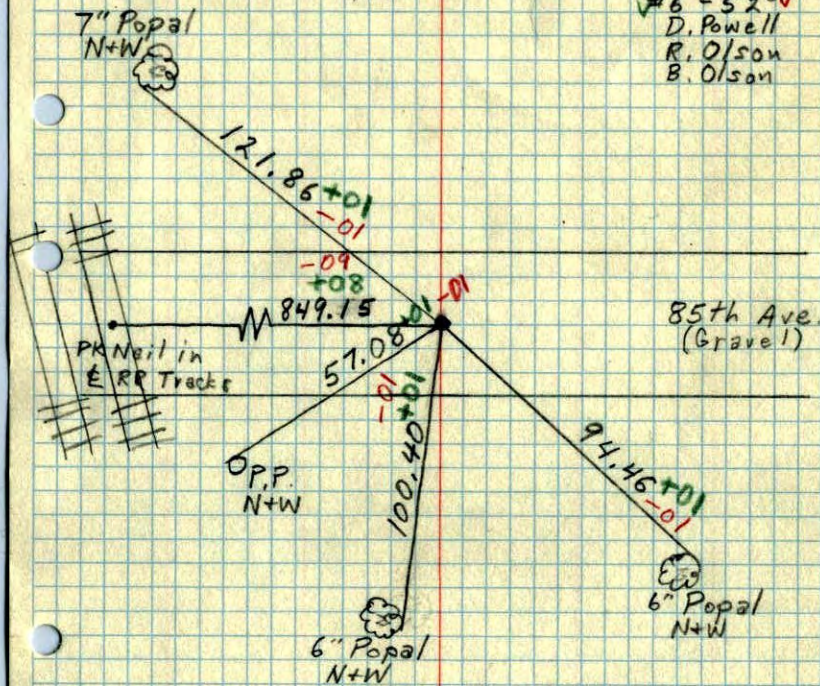
~~CI To be Set~~

TEMPERATURE CORRECTED
 AND HORIZONTALLY
 TAPED MEASUREMENTS

S $\frac{1}{4}$ Cor. Sec. 36 - T31 - R24

1" Iron Pipe down 0.1'±.
 ReSet by N.C. Holm.

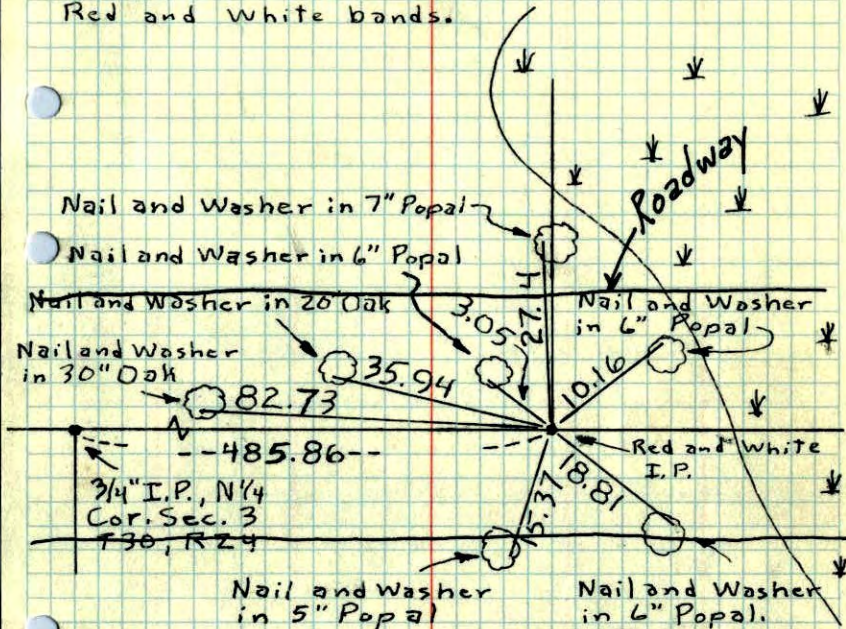
6/12/69
 #6 - 52° ✓
 D. Powell
 R. Olson
 B. Olson



So. $\frac{1}{4}$ Cor. Sec. 36, T31, R24

Set 8'x1" I.P. From Resurvey. Top 3.5'

Sticking up and painted with alternate 6" Red and White bands.



22 Mar. 63

J. Oliver
 M.D. Anderson

All ties gone 6/10/68

Additional ties taken with geodometer.

I.P. Taken out
 reports Caswell Eng. Co.
 Dec. 1964

TEMPERATURE CORRECTED
 AND HORIZONTALLY
 TAPED MEASUREMENTS

ROLAND W. ANDERSON
 COUNTY SURVEYOR
 ANOKA COUNTY, MINNESOTA

So. 1/4 Cor. Sec. 36, T 31, R 24

Set 8' X 1" I.P. From Resurvey

Top 3.5' Sticking up and pointed with
alternate 6" Red & White Bands.

