

# CERTIFICATE OF LOCATION OF GOVERNMENT CORNER

County of Anoka

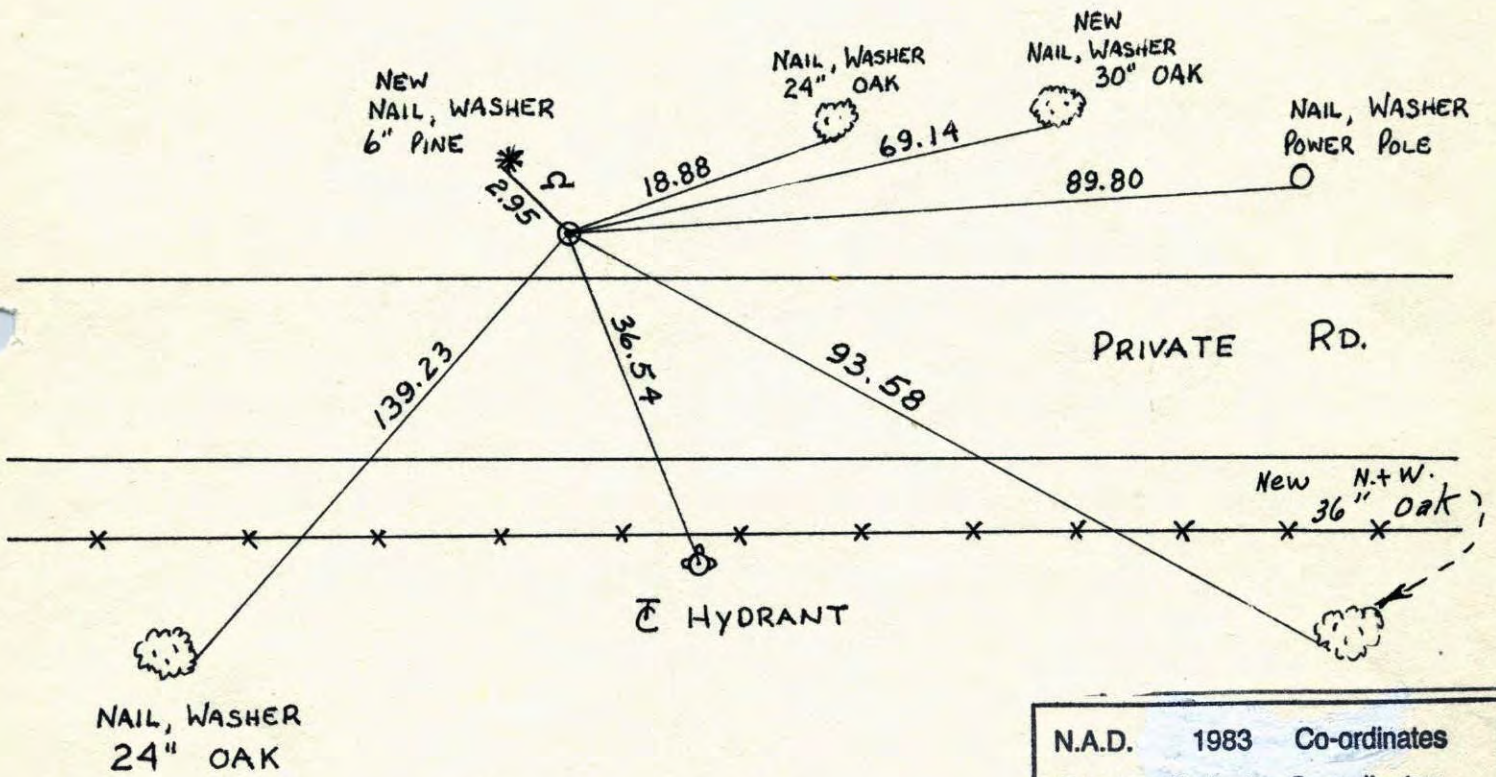
State of Minnesota

SOUTHWEST Corner of Sec. 36 Township 31 Range 24

I hereby certify that on the 29 day of June, 1960, I found the described corner which was evidenced by CONCRETE MONUMENT

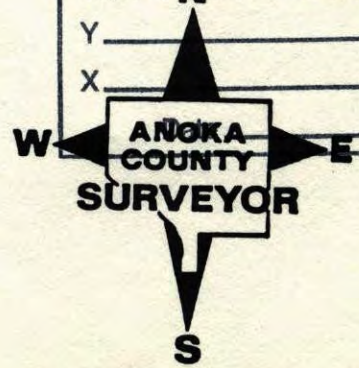
and I further certify that to perpetuate the location of said corner, I did, at the exact location thereof, place a permanent marker consisting of CAST IRON MONUMENT

which reference or witness monuments are located in the manner following:



KENNEDY PARK

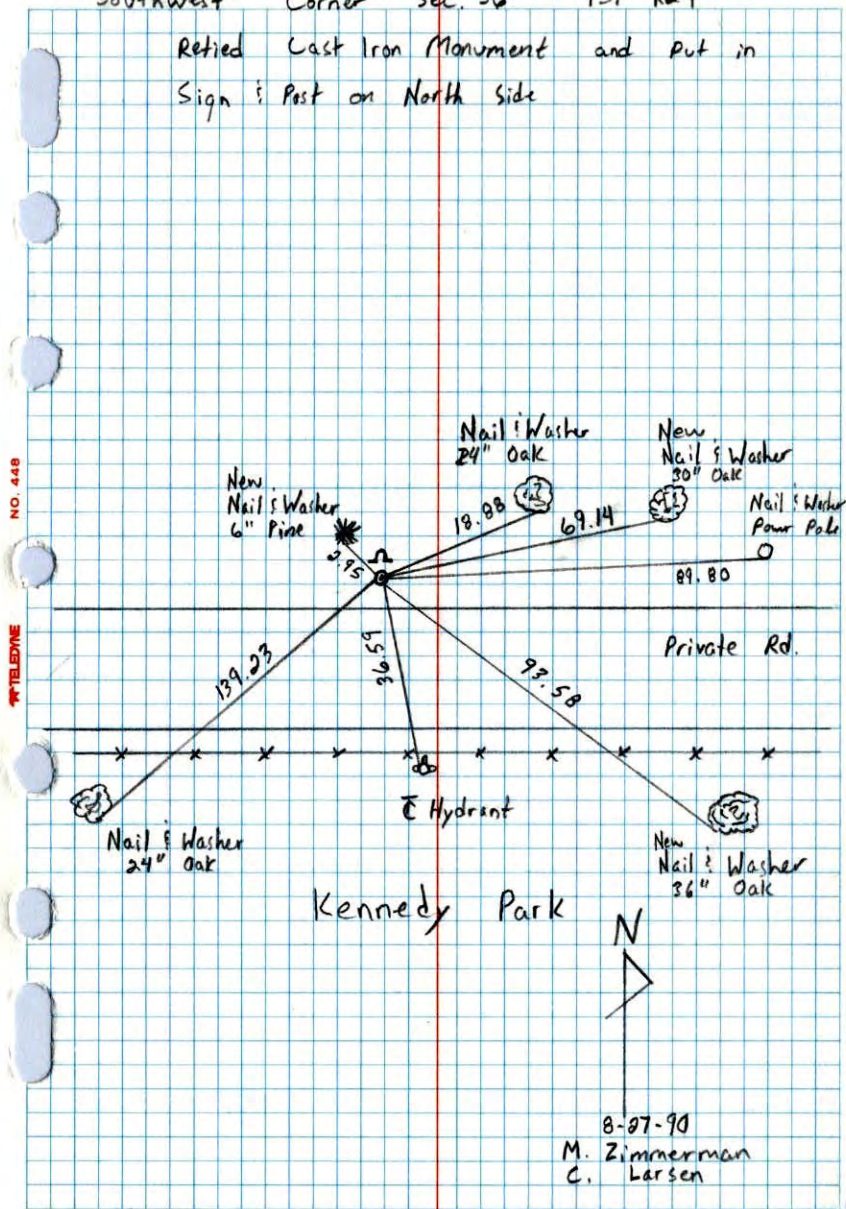
N.A.D.	1983	Co-ordinates
County	Project	Co-ordinates
Northing	132480.0152	
Easting	494610.5623	
State Plane	Co-ordinates	
Y	_____	
X	_____	



Revised date	Revised date	Revised date
9-18-90		
8-3-94		

Southwest Corner Sec. 36 T31 R24

Retired Cast Iron Monument and Put in Sign & Post on North Side



8-27-90  
M. Zimmerman  
C. Larsen

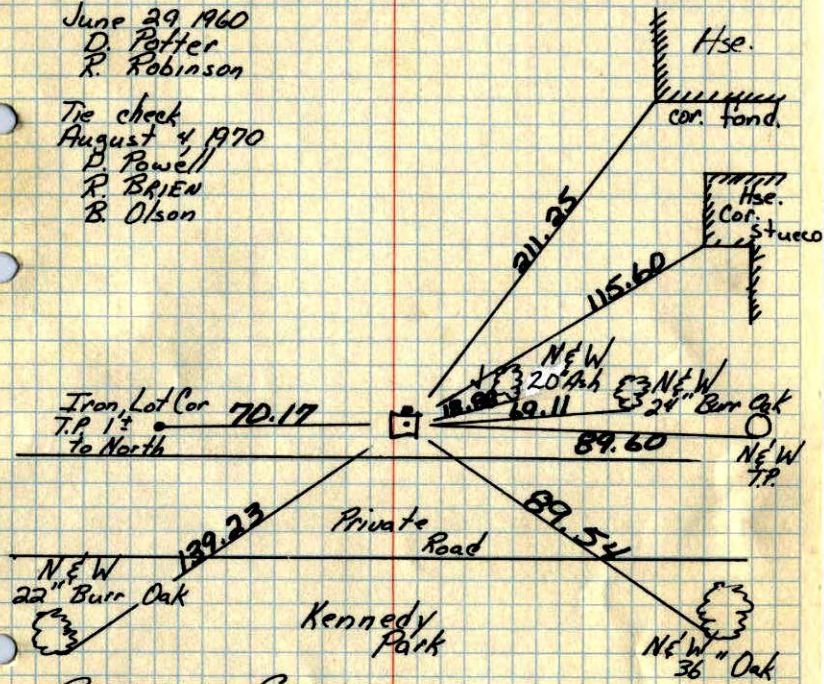
NO. 448 TELEPHONE

S.W. Cor. Sec. 36 - T31 - R24

Conc. Mon. down 0.1' Iron on North. q' North of E Private Rd.

June 29, 1960  
D. Potter  
R. Robinson

Tie check  
August 4, 1970  
D. Powell  
R. BRIEN  
B. Olson



REPLACED CONCRETE MONUMENT WITH CAST IRON (FLUSH)  
7/19/74  
R. FARMER

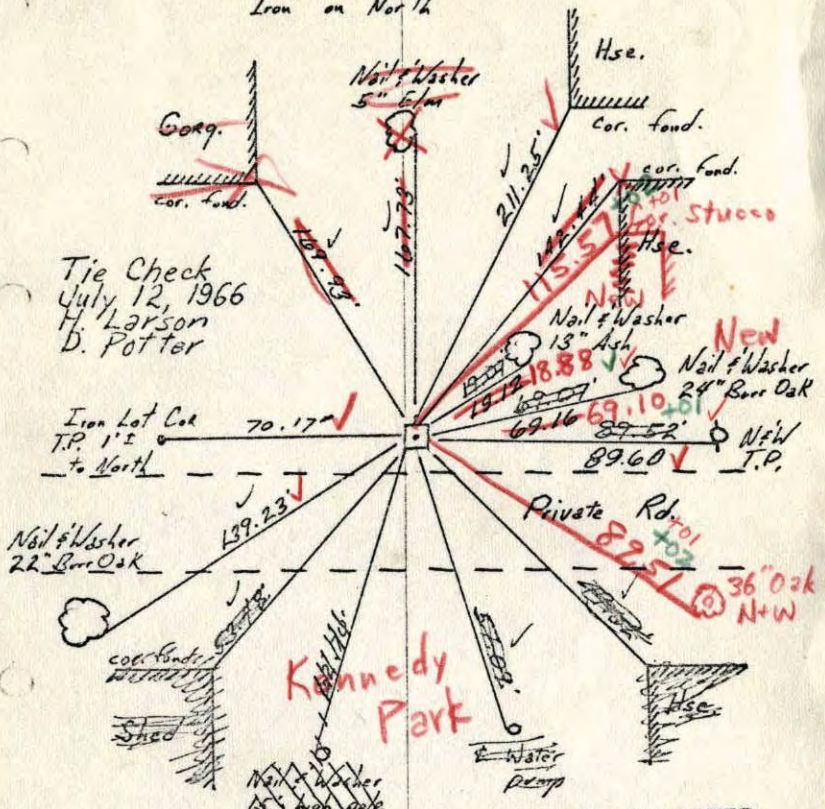
TIE CHECK  
JUNE 24, 1977  
R. SPINERUD  
D. BRIEN  
J. STEPHENS

ROLAND W. ANDERSON  
COUNTY SURVEYOR  
ANOKA COUNTY, MINNESOTA

TEMPERATURE CORRECTED  
AND HORIZONTALLY  
TAPED MEASUREMENTS

S.W. Cor. Sec. 36 - T31 - R24

Conc. Man. down 0.2'  
9'± North & Private Rd.  
Iron on North



Tie Check  
July 12, 1966  
H. Larson  
D. Potter

Iron Lot Cor  
T.P. 1 1/2  
to North

Kennedy  
Park

TEMPERATURE CORRECTED  
AND HORIZONTALLY  
TAPED MEASUREMENTS

6/29/60  
D. Potter  
R. Robinson

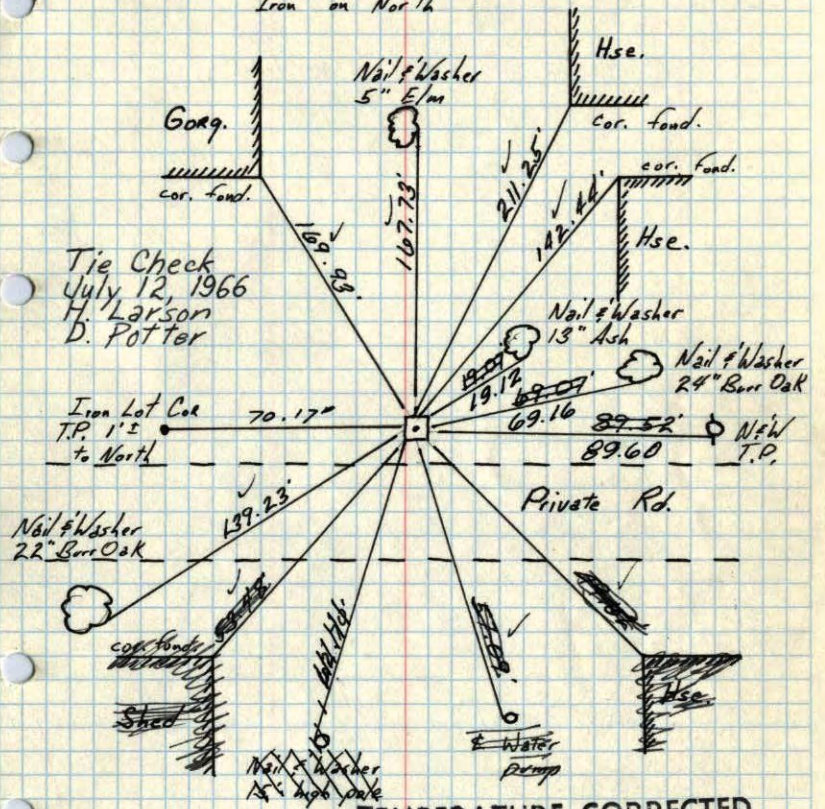
Ties checked  
June 5, 1964  
M. D. Anderson  
R. Carlson

8/4/70  
#10-80'  
D. Powell  
R. Brien  
B. Olson

ROLAND W. ANDERSON  
COUNTY SURVEYOR  
ANOKA COUNTY, MINNESOTA

S.W. Cor. Sec. 36 - T31 - R24

Conc. Man. down 0.2'  
9'± North & Private Rd.  
Iron on North



Tie Check  
July 12, 1966  
H. Larson  
D. Potter

Iron Lot Cor  
T.P. 1 1/2  
to North

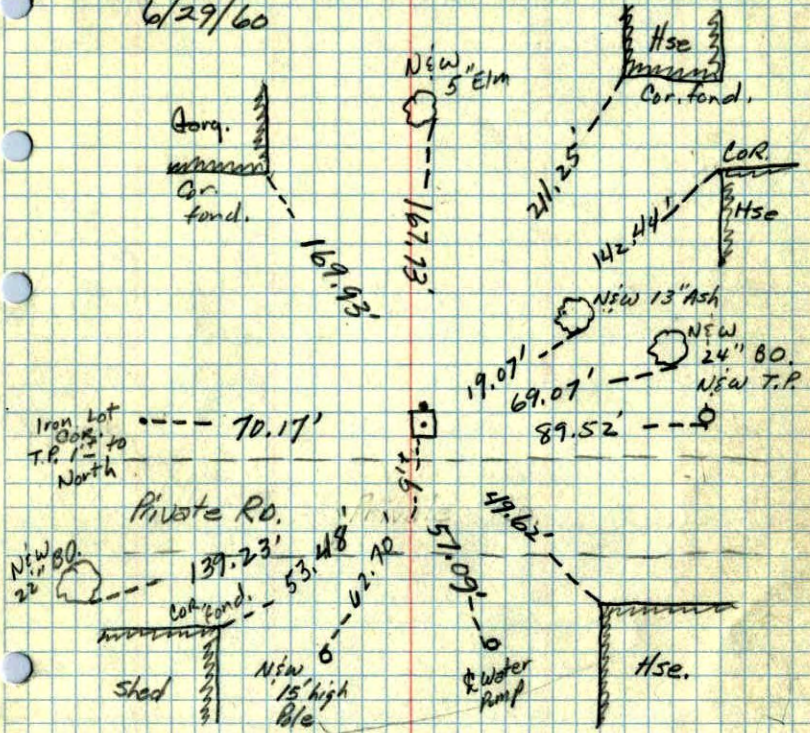
TEMPERATURE CORRECTED  
AND HORIZONTALLY  
TAPED MEASUREMENTS

6/29/60  
D. Potter  
R. Robinson

Ties checked  
June 5, 1964  
M. D. Anderson  
R. Carlson

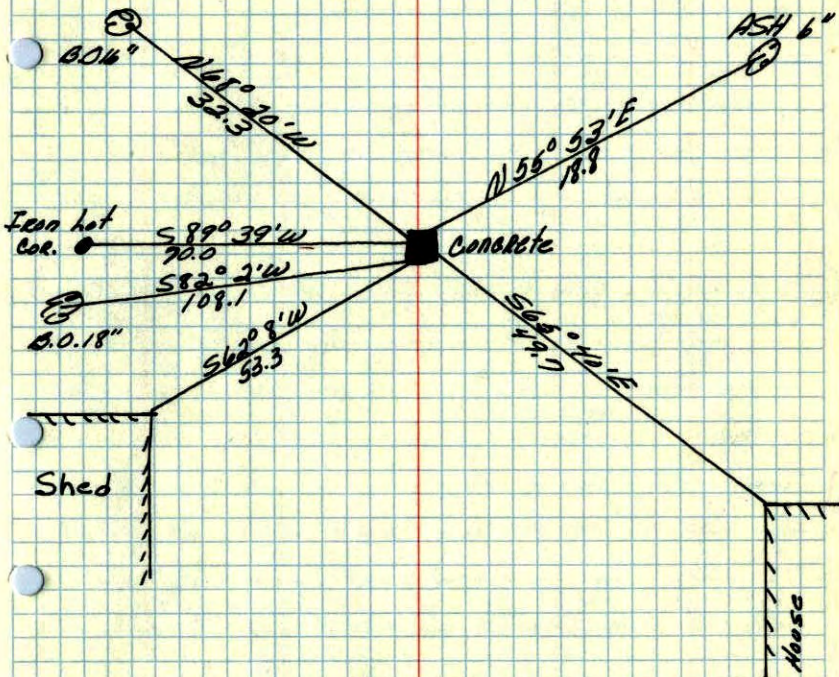
ROLAND W. ANDERSON  
COUNTY SURVEYOR  
ANOKA COUNTY, MINNESOTA

Out SW. Cor. Sec. 36, T31, R24,  
 46834.1 Conc. Man. Down. 2  
 6/29/60 9" North & Private RD.  
 Placed Iron on the North



17/15/60  
 RR

SW corner of Sec. 36 T31 R24  
 Conc. Man.



July 13, 1943  
 Cartwright