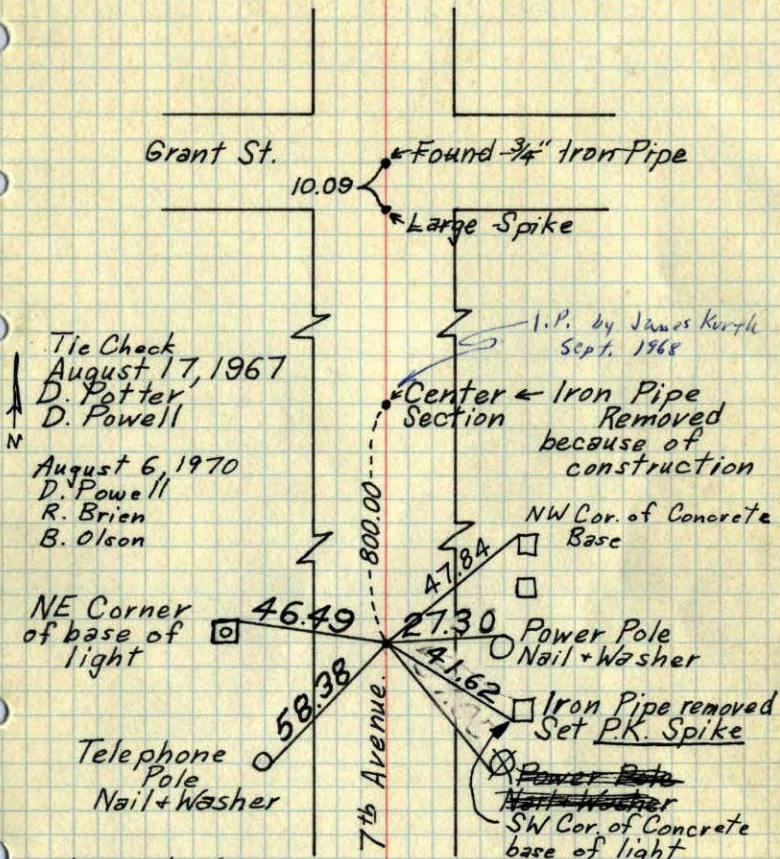


Center Sec. 6-T31-R24



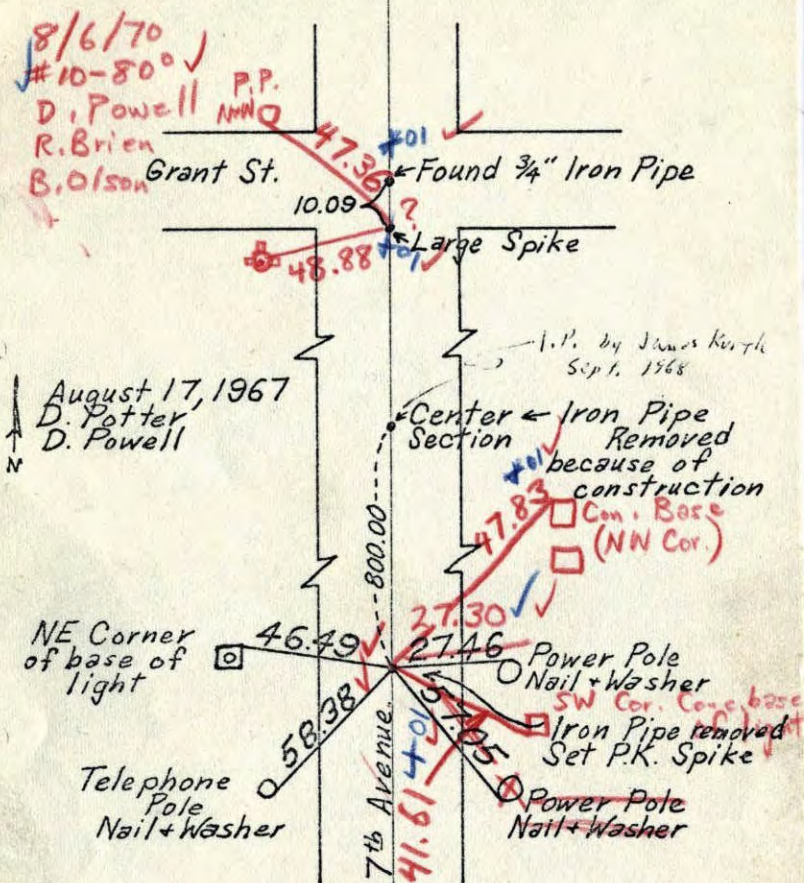
under construction  
6-15-77 R. Spangler

TAPED MEASUREMENTS  
AND HORIZONTALLY  
TEMPERATURE CORRECTED  
AND HORIZONTALLY  
TAPED MEASUREMENTS

ROLAND W. ANDERSON  
COUNTY SURVEYOR  
ANOKA COUNTY, MINNESOTA

X

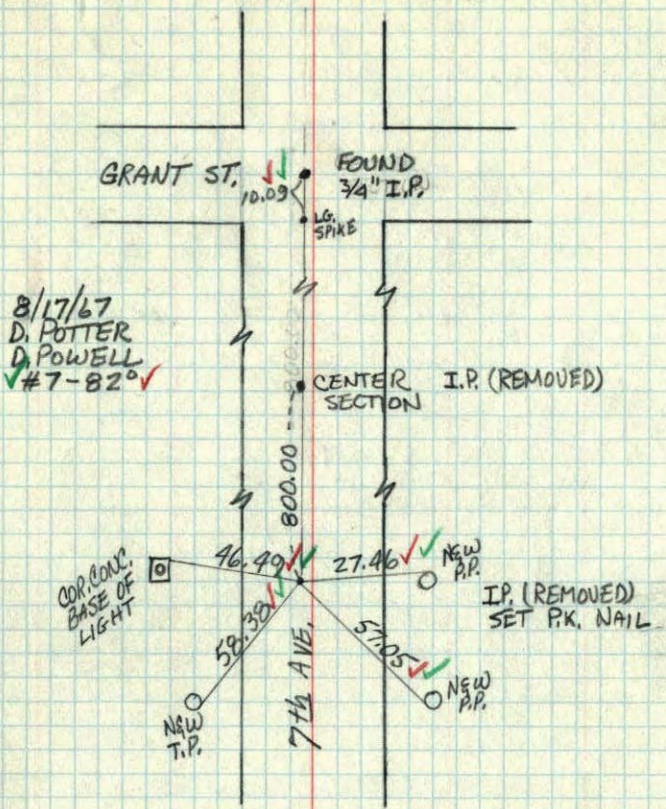
Center Sec. 6-T31-R24



TAPED MEASUREMENTS  
AND HORIZONTALLY  
TEMPERATURE CORRECTED  
AND HORIZONTALLY  
TAPED MEASUREMENTS

ROLAND W. ANDERSON  
COUNTY SURVEYOR  
ANOKA COUNTY, MINNESOTA

CENTER SEC. 6, T31, R24



8/17/67  
D. POTTER  
D. POWELL  
✓#7-82°✓

COR. CONC.  
BASE OF  
LIGHT

NEW  
T.P.

7TH AVE.

CENTER SECTION I.P. (REMOVED)

I.P. (REMOVED)  
SET PK. NAIL

46.49

58.38

57.05

52.22

58.98

57.05

52.22

58.98

57.05

52.22

58.98

57.05

52.22

58.98

57.05

52.22

58.98

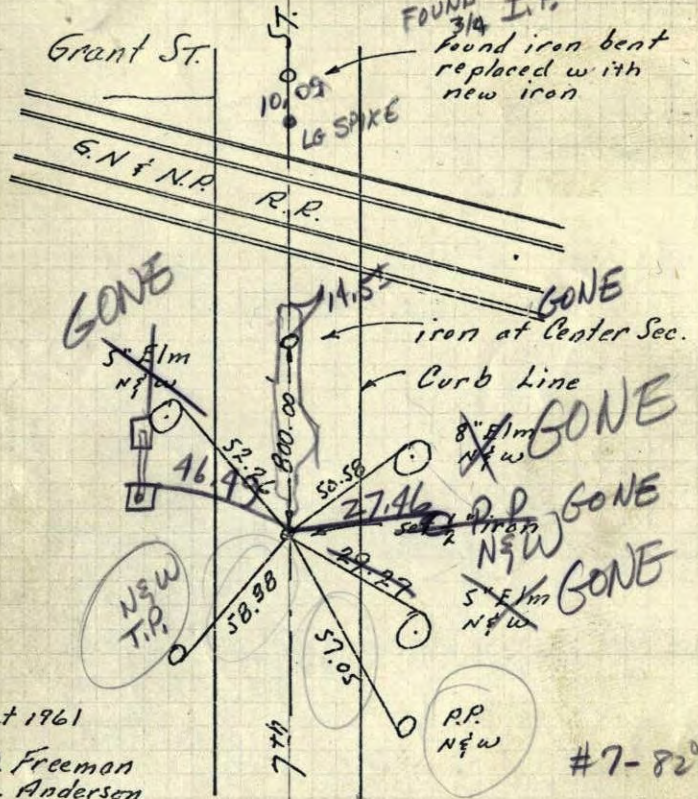
57.05

52.22

58.98

Center Sec. 6-31-24. Anoka Twn.

Found 1" iron pipe @ 7th St.  
FOUND 3/4" I.P.  
Found iron bent replaced with new iron



629.5

5 Oct 1961  
R.O. Freeman  
M.D. Anderson

BRIDGED  
AS APPROX. CEN.  
800' SO. INT  
7TH & TYLER  
TEMPERATURE CORRECTED  
AND HORIZONTALLY  
TAPED MEASUREMENTS

ROLAND W. ANDERSON  
COUNTY SURVEYOR  
ANOKA COUNTY, MINNESOTA

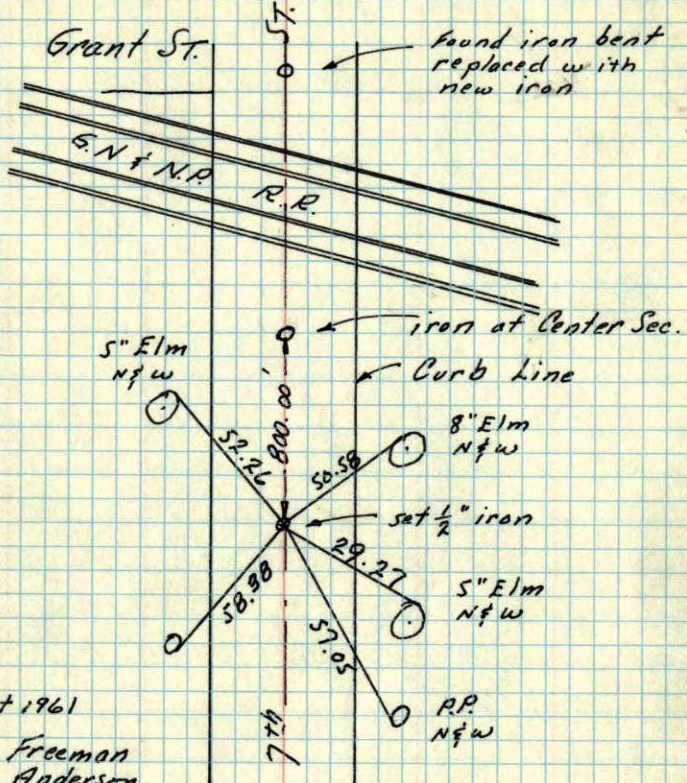
#7-82°

114

314

Center Sec. 6-31-24. Anoka Twn.

Found 1" iron pipe & 7<sup>th</sup> St.



5 Oct 1961  
R.O. Freeman  
M.D. Anderson

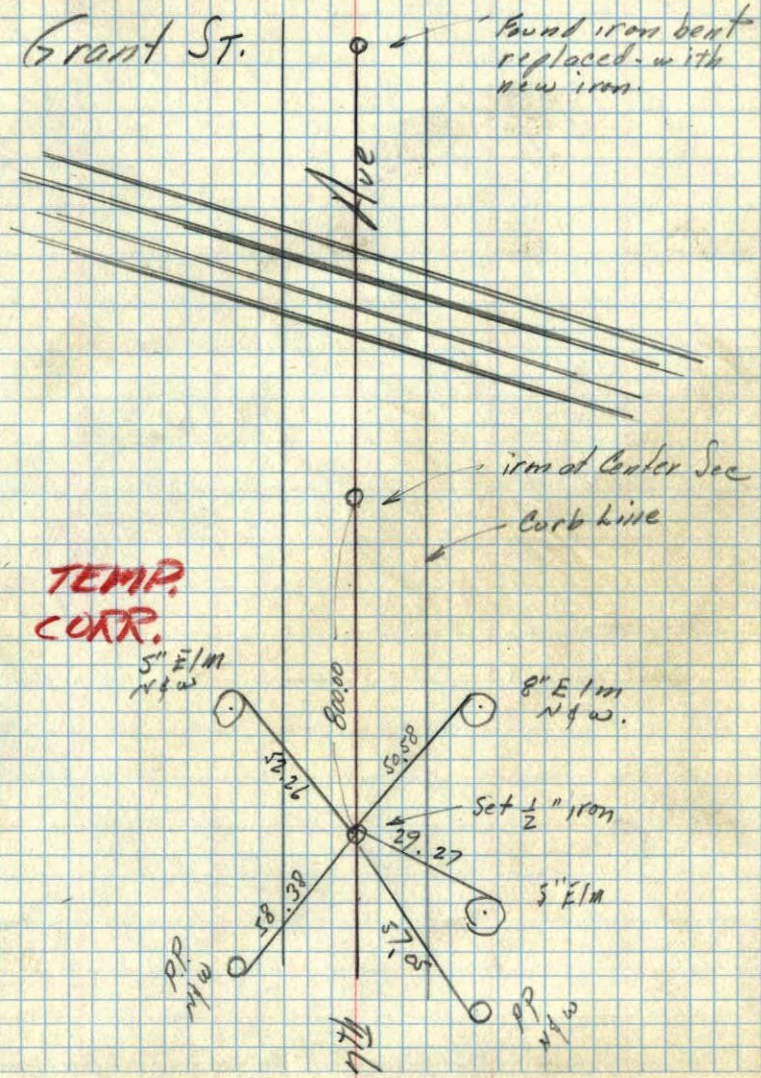
TEMPERATURE CORRECTED  
AND HORIZONTALLY  
TAPED MEASUREMENTS

ROLAND W. ANDERSON  
COUNTY SURVEYOR  
ANOKA COUNTY, MINNESOTA

5 Oct 1961  
Freeman Anderson  
+70°

Ties to Center Sec. 6-31-24. Anoka.

Found 1" iron pipe & 7<sup>th</sup> St.



TEMP.  
CORR.