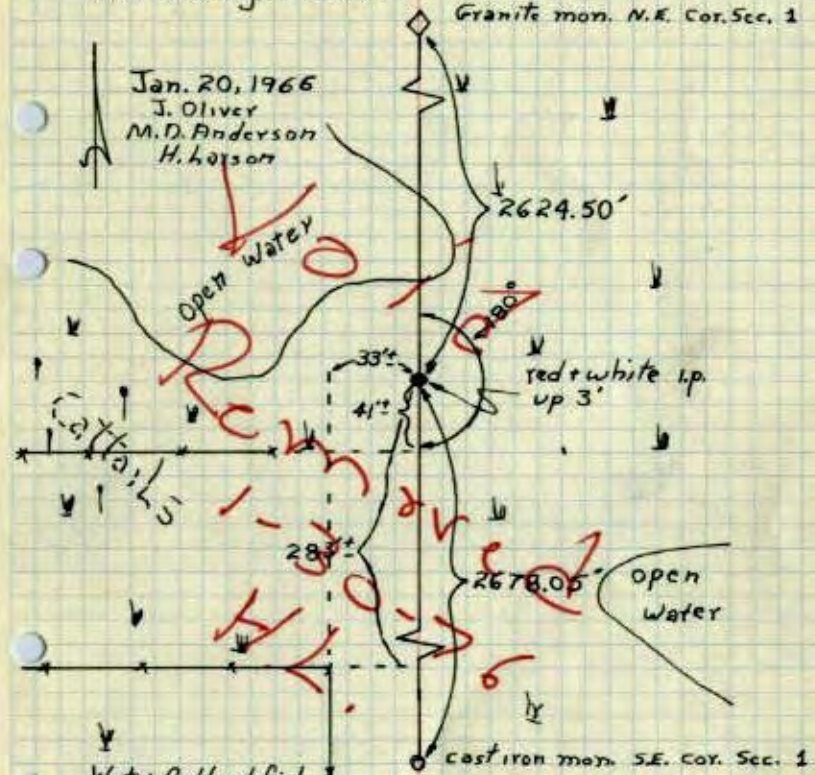


E 1/4 Cor. Sec. 1 T31 R24

Set 1" x 21' red & white I.P. on proration and straight line.



Wat & Could not find 7/22/70 DP check 1-16-74 I.P. bent H. Larson

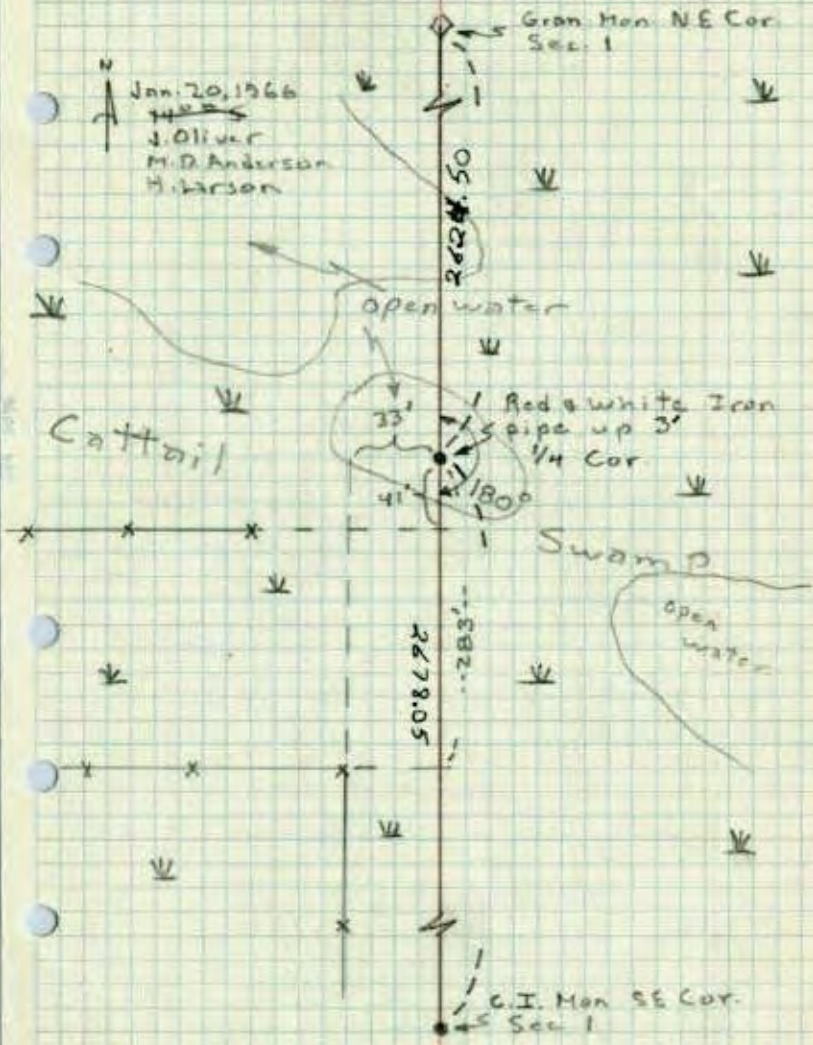
Tie Check July 11, 1966 H. Larson D. Potter

TEMPERATURE CORRECTED AND HORIZONTALLY TAPED MEASUREMENTS

ROLAND W. ANDERSON COUNTY SURVEYOR ANOKA COUNTY, MINNESOTA

E 1/4 Cor. Sec. 1, T31, R24

Set 1" x 21' Red and white I.P. on proration and straight line.



G.I. Mon S.E. Cor. Sec. 1