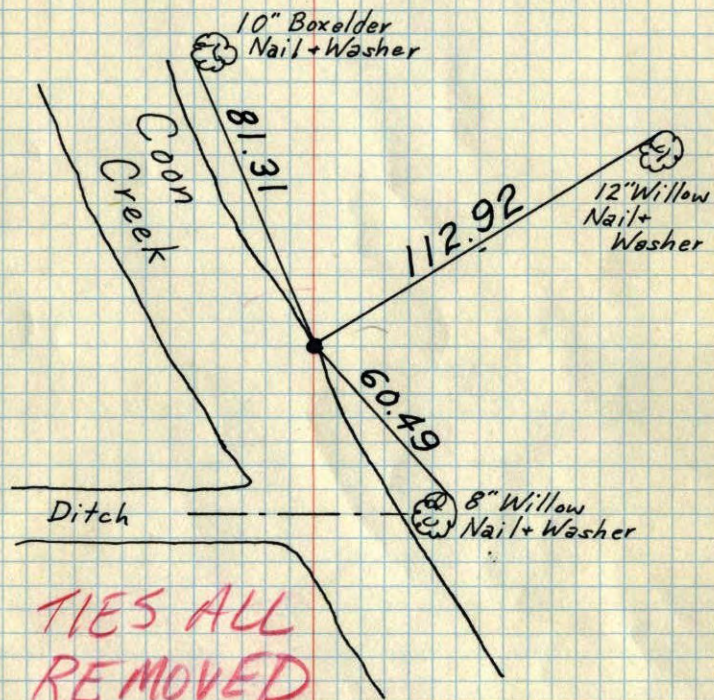


E 1/4 Cor. Sec. 9-T31-R24

Placed 1" Iron Pipe up 0.5' ± - 2' ± into
Creek from area resurvey.

July 10, 1969
M. D. Anderson
H. J. Larson



**TIES ALL
REMOVED**

TEMPERATURE CORRECTED
AND HORIZONTALLY
TAPED MEASUREMENTS

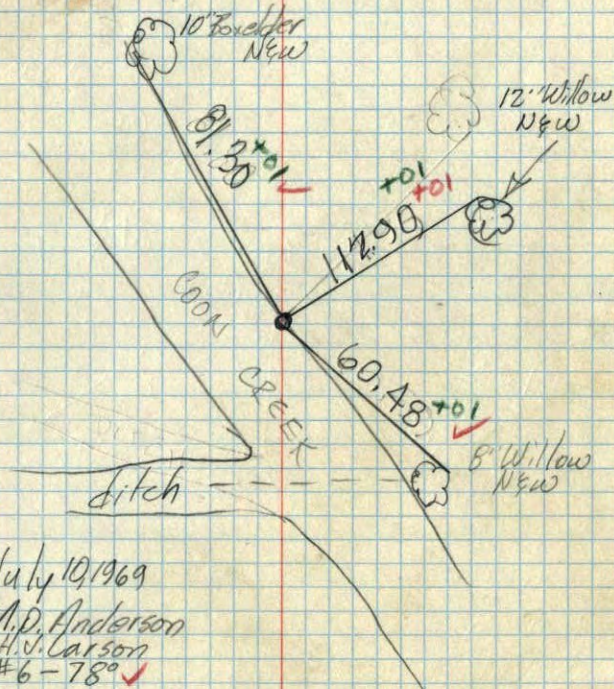
ROLAND W. ANDERSON
COUNTY SURVEYOR
ANOKA COUNTY, MINNESOTA

E 1/4 Cor. Sec. 9-T31-R24

~~Placed Red & wh. to pipe up 4' ±~~
~~Replaced from Caswell reference points~~

~~On Edge of Water~~

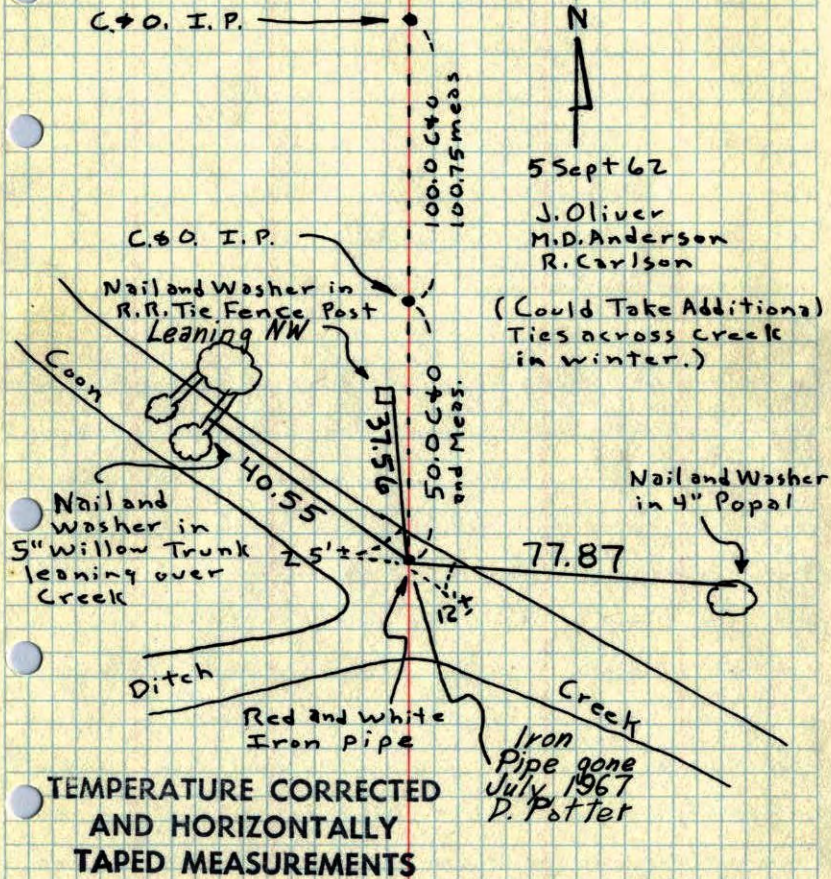
Place 1" Iron Pipe up 1 1/2' ± - 2' ± into Creek
Replaced from area resurvey



July 10, 1969
M. D. Anderson
H. J. Larson
#6-78 ✓

E 1/4 Cor. Sec. 9, T31, R24

Set 7'x1" I.P. in Coon Creek, Top 4' of pipe painted in alternate red and white 6" bands. Top 2.5' of pipe sticking out of water. - Set Cor. from Cartwright and Olsons Ties.

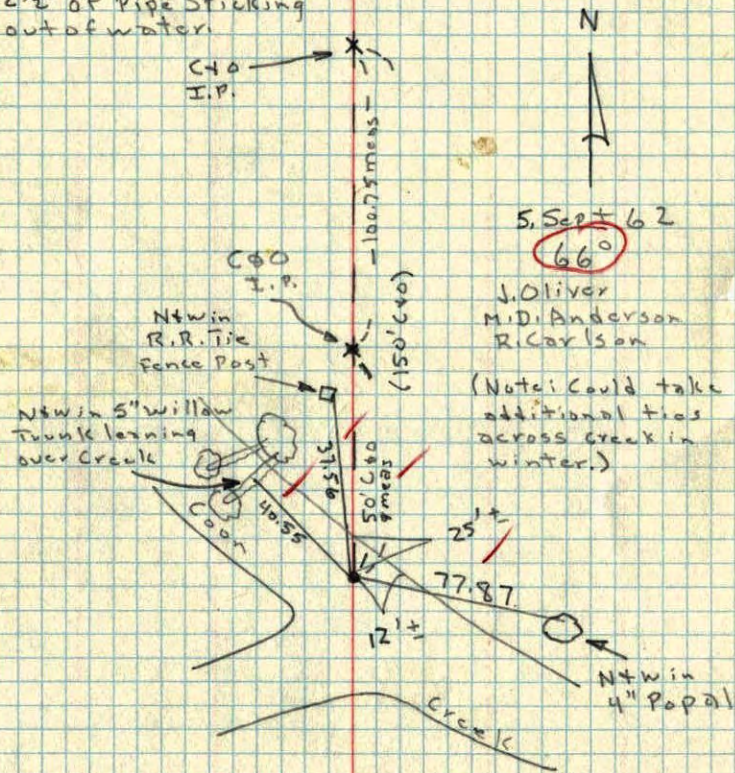


TEMPERATURE CORRECTED AND HORIZONTALLY TAPED MEASUREMENTS

ROLAND W. ANDERSON
COUNTY SURVEYOR
ANOKA COUNTY, MINNESOTA

E 1/4 Cor. Sec. 9, T31, R24

Set 1" x 7' I.P. in Coon Creek, Top 4' of pipe painted in alternate red & white bands 6" long. Set from Cartwright & Olsons Ties. 2 1/2' of Pipe Sticking out of water.

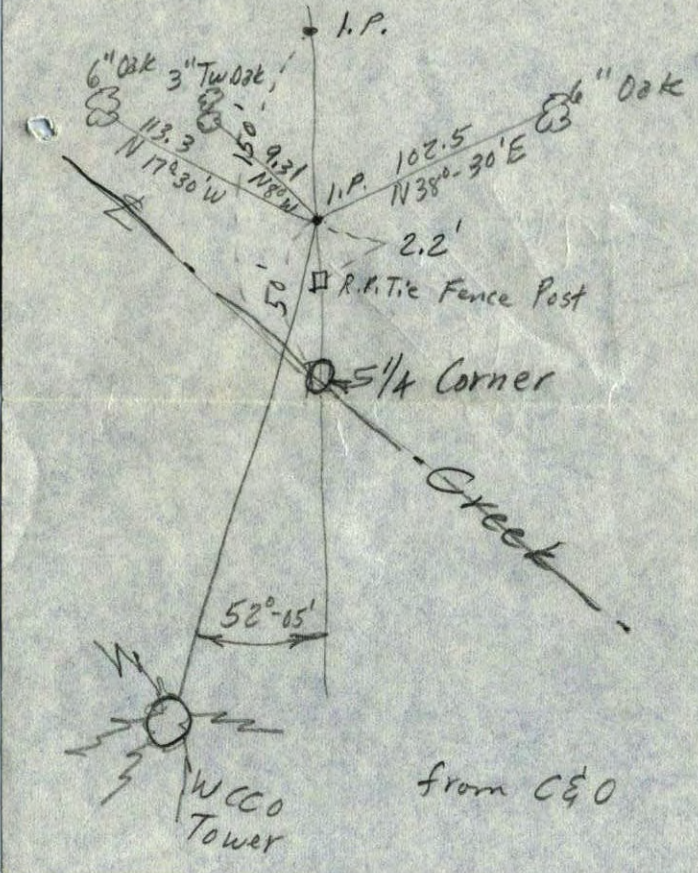


Temp Corr.

5. Sept 62
66°

J. Oliver
M.D. Anderson
R. Carlson
(Note: Could take additional ties across creek in winter.)

E 1/4 Corn. Sec. 9, T31, R24



from C&O