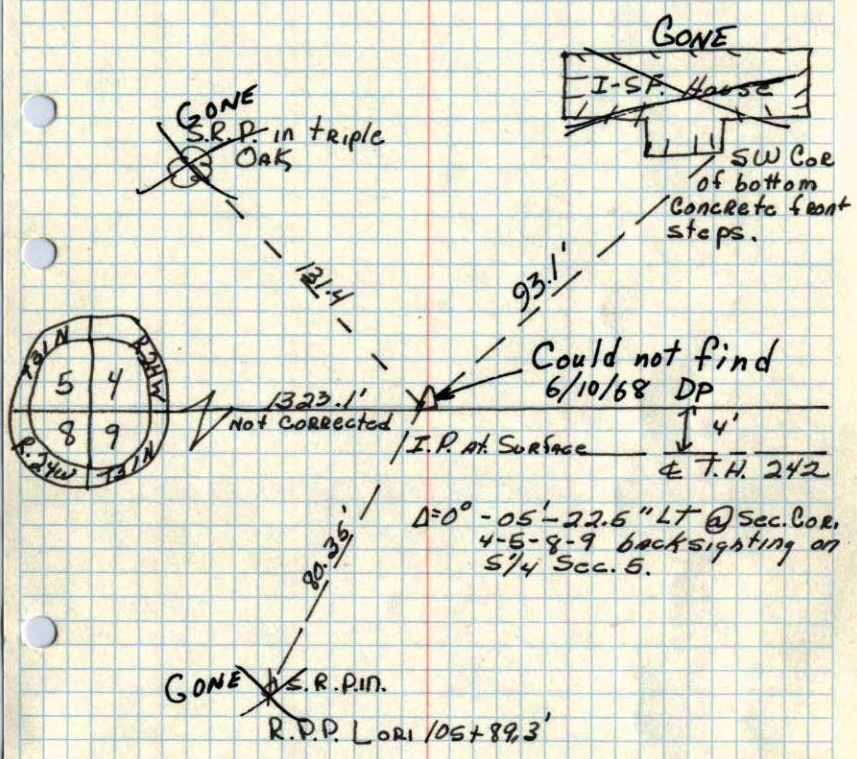


ok. 29

S 1/16 corner of SW 1/4 of Sec. 4 T.31, R.24.

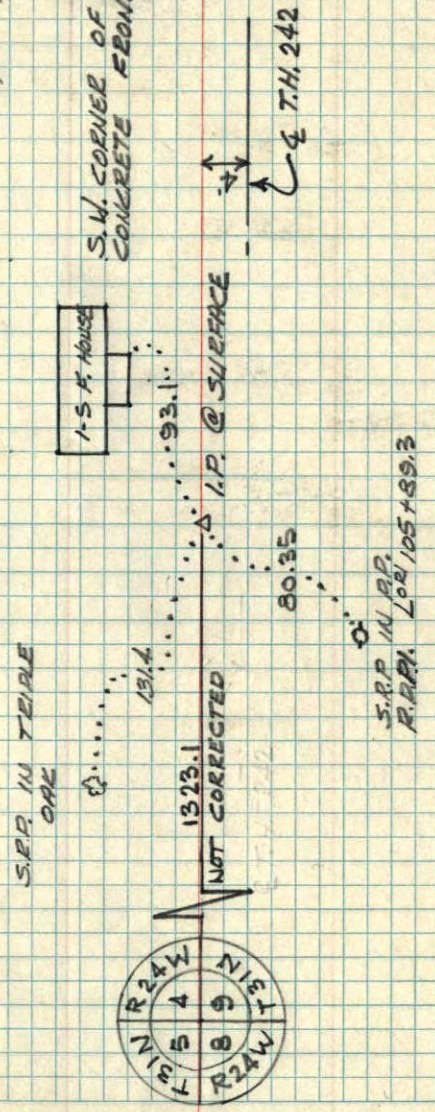


Sept. 19, 1957
Minn. Hwy Dept.

22

S. 1/16, S.W. 1/4, SECTION 4
T31N R24W

By Minn. Hwy. Dept.
Sept. 18, 1957



$\Delta = 0^\circ - 05' - 22.5''$ LT. @ SECTION CORNER 4-5-B-9
BACKSIGHTING ON 3/4 SEC. 5