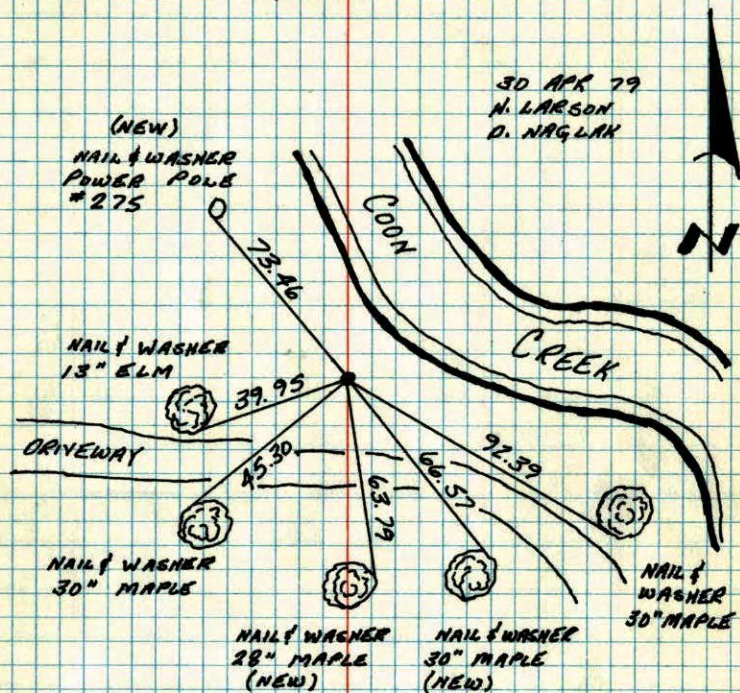


S 1/4 CORNER SECTION 26-T31-R24

REPLACED RED & WHITE IRON PIPE WITH NEW RED
& WHITE OCT. 14, 1977 M.D. ANDERSON, P. BERTELSON,
M. AUNE. REDRAWN AND TIE CHECK APR. 30, 1979.
FOUND PIPE LOOSE, CORRECTED AND RETIED.



TEMPERATURE CORRECTED
AND HORIZONTALLY
TAPED MEASUREMENTS

ROLAND W. ANDERSON
COUNTY SURVEYOR
ANOKA COUNTY, MINNESOTA

S 1/4 COR. SECTION 26 T31 R24

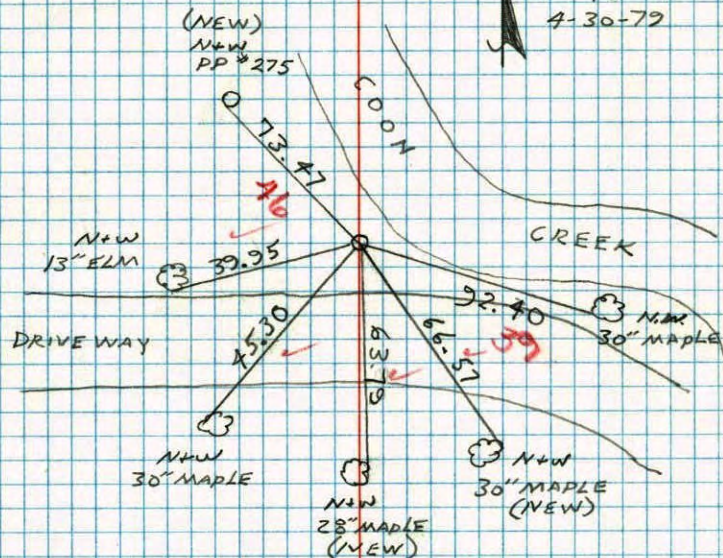
REPLACED RED & WHITE IRON PIPE WITH
NEW RED & WHITE OCT. 14, 1977

M.D. ANDERSON, P. BERTELSON, M. AUNE.

REDRAWN AND TIE CHECK APRIL 30, 1979

FOUND PIPE LOOSE, CORRECTED
AND RETIED.

H. LARSON
D. NAGLIK
*1-42°
4-30-79



TEMPERATURE CORRECTED
AND HORIZONTALLY
TAPED MEASUREMENTS

ROLAND W. ANDERSON
COUNTY SURVEYOR
ANOKA COUNTY, MINNESOTA

S 1/4 Cor. Sec. 26 - T31 - R24

~~Conc. Mon. .3' above water level~~
~~Iron Pipes on all sides~~

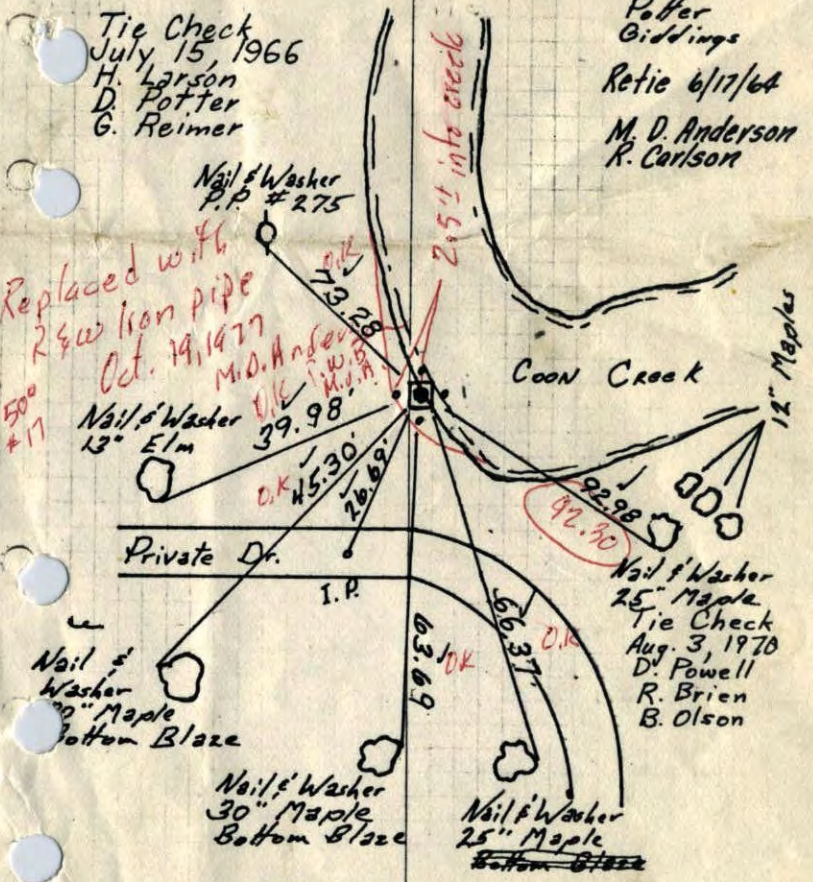
Conc. Removed Nov. 1962 - Replaced with 1 1/2" x 1"
~~red white~~ Iron pipe up 1'
Yellow

8/3/00

Potter
Biddings
Retie 6/17/64
M. D. Anderson
R. Carlsson

Tie Check
July 15, 1966
H. Larson
D. Potter
G. Reimer

Replaced with
2 1/2" iron pipe
Oct. 19, 1977
M.D. Anderson
W.W.B.
M.A.H.



TEMPERATURE CORRECTED
AND HORIZONTALLY
TAPED MEASUREMENTS

ROLAND W. ANDERSON
COUNTY SURVEYOR
ANOKA COUNTY, MINNESOTA

S 1/4 Cor. Sec. 26 - T31 - R24

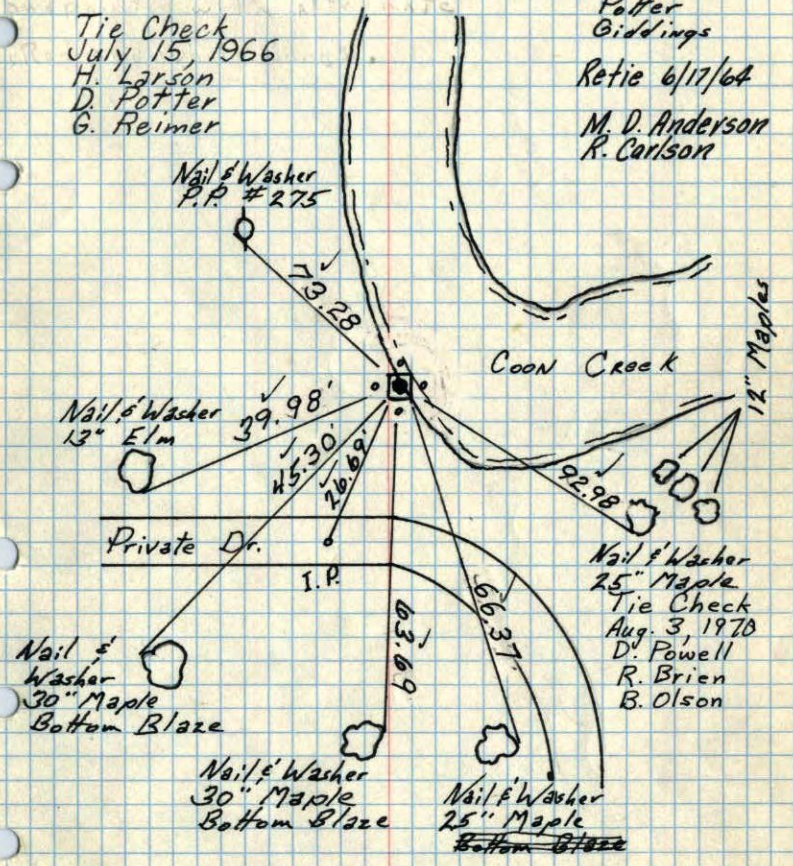
~~Conc. Mon. .3' above water level~~
~~Iron Pipes on all sides~~

Conc. Removed Nov. 1962 - Replaced with 1 1/2" x 1"
~~red white~~ Iron pipe up 1'
Yellow

8/3/00

Potter
Biddings
Retie 6/17/64
M. D. Anderson
R. Carlsson

Tie Check
July 15, 1966
H. Larson
D. Potter
G. Reimer



TEMPERATURE CORRECTED
AND HORIZONTALLY
TAPED MEASUREMENTS

ROLAND W. ANDERSON
COUNTY SURVEYOR
ANOKA COUNTY, MINNESOTA

84

S 1/4 Cor. Sec. 26 - T31 - R24

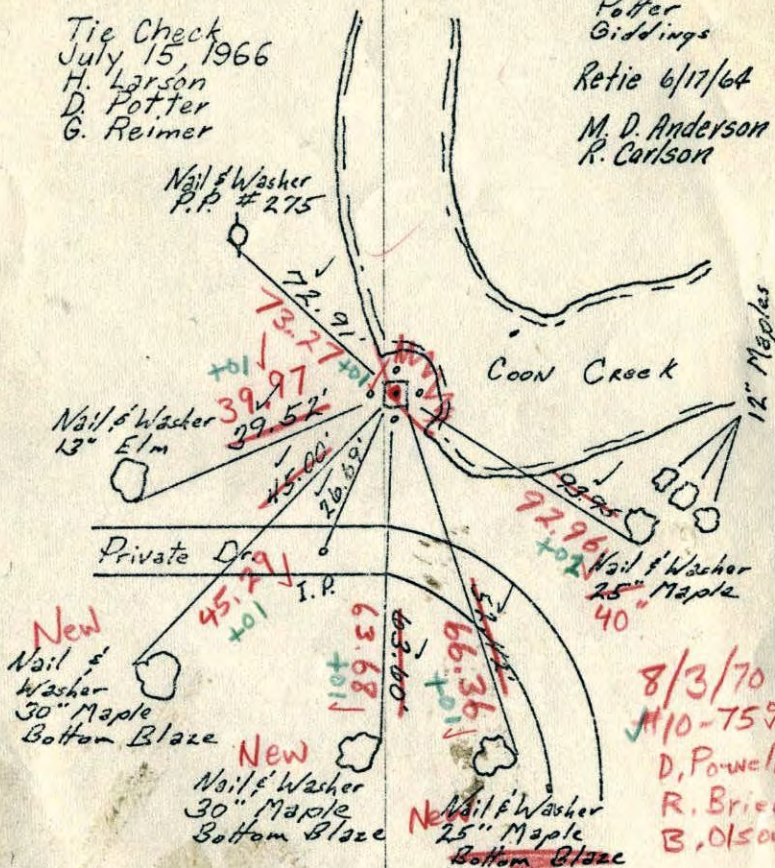
~~Conc. Mon. .3' above water level
Iron Pipes on all sides~~

Conc. Removed Nov. 1962 - Replaced with 1 1/2" x 1"
~~red white~~ Iron pipe up 1'
Yellow

8/3/00

Tie Check
July 15, 1966
H. Larson
D. Potter
G. Reimer

Potter
Biddings
Retie 6/17/64
M. D. Anderson
R. Carlson



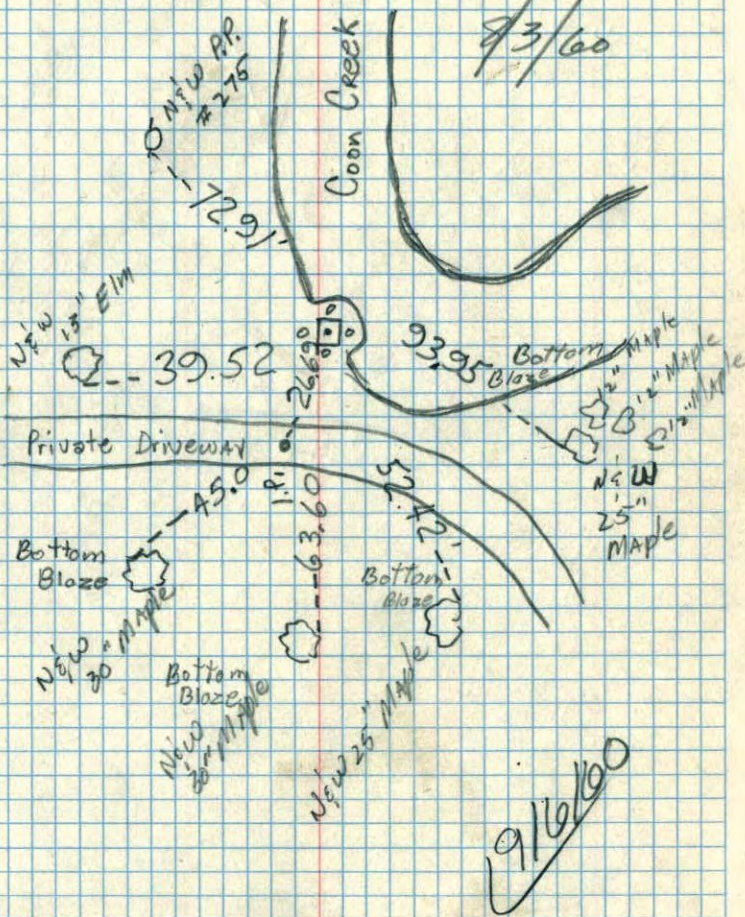
TEMPERATURE CORRECTED
AND HORIZONTALLY
TAPED MEASUREMENTS

ROLAND W. ANDERSON
COUNTY SURVEYOR
ANOKA COUNTY, MINNESOTA

Out
49437.3 S 1/4 Sec. 26, T31, R24

In
49455.7 Conc. Monument .3'
above water level
of Creek, Iron
Pipe on all sides

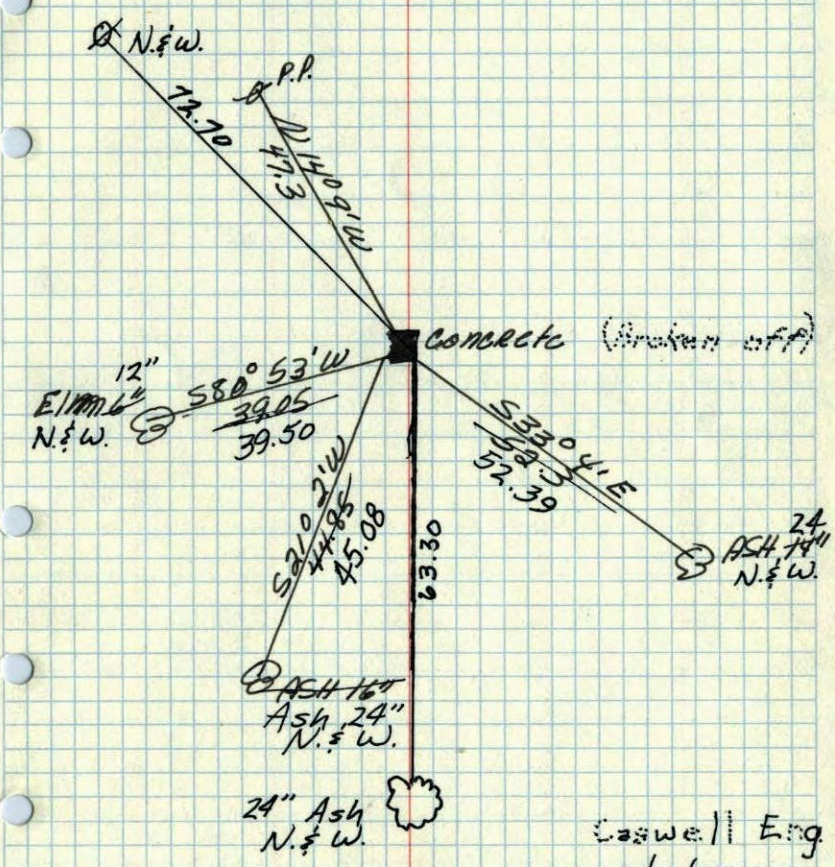
8/3/00



9/16/00

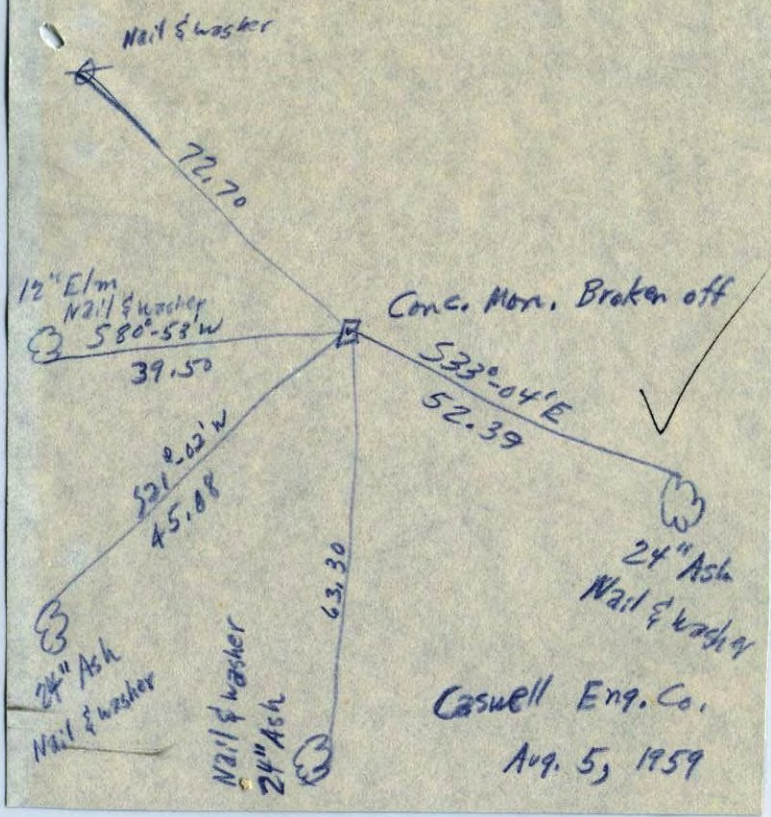
75 ✓
 S¹/₄ corner of Sec. 26 + 31 R. 24

Conc. Mon. Flash.



Caswell Eng
 8/5/59
 Nov. 12, 1944
 Coetwright

S¹/₄ Corn. Sec. 26, 31-24



Caswell Eng. Co.
 Aug. 5, 1959