

CERTIFICATE OF LOCATION OF GOVERNMENT CORNER

County of Anoka

State of Minnesota

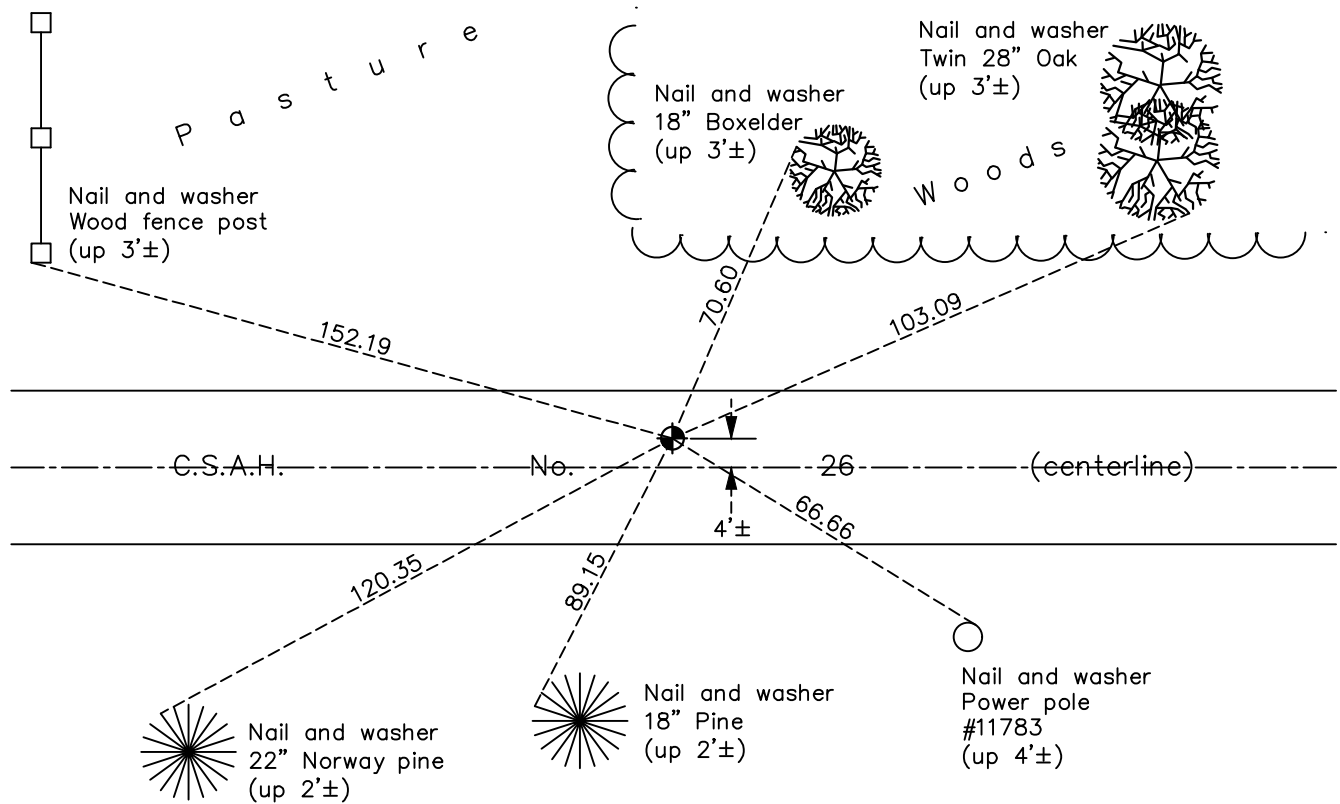
North $\frac{1}{4}$ Corner of Sec. 1 Township 33 Range 23

On the 27th day of September, 1963, the described corner was evidenced by area resurvey

and to perpetuate the location of said corner, at the exact location thereof, a permanent marker was placed consisting of a cast iron monument

AND on the 26th day of June, 2023, said permanent marker was found and the ties were updated

Updated reference ties are as shown below.



Revision Date
10/09/2023

N.A.D. 1983 Coordinates
 (1996 Adjustment)

County Project Coordinates	
Northing	<u>227593.8659</u>
Easting	<u>529378.8913</u>
Date	<u>3/25/02</u>

I hereby certify that this United States public land survey monument record is correct and complete to the best of my knowledge and belief.

David Zieglmeier Date 12/11/23

David Zieglmeier Anoka County Surveyor
 Minnesota License Number 46179

HISTORY OF GOVERNMENT CORNER

Page No. 2

County of Anoka

State of Minnesota

North 1/4 Corner of Sec. 1 Township 33 Range 23

CORNER HISTORY:

September 27, 1963 - Set cast iron monument flush using area resurvey and established ties to monument.

July 10, 1967 - Found cast iron monument and updated ties.

June 16, 1970 - Found cast iron monument with P.K. nails 2.00' north and east. Updated ties.

August 12, 1971 - Found cast iron monument and updated ties.

July 22, 1974 - Found cast iron monument and updated ties.

June 27, 1977 - Found cast iron monument and updated ties.

June 8, 1981 - Found cast iron monument and updated ties.

June 11, 1984 - Found cast iron monument and updated ties.

July 30, 1992 - Found cast iron monument and updated ties.

August 5, 1997 - Found cast iron monument and updated ties.

August 1, 2000 - Found cast iron monument and updated ties.

March 25, 2002 - Established NAD 1983 (1996 adj.) Anoka County project coordinates by static GPS methods.

March 26, 2002 - Found cast iron monument and updated ties.

April 27, 2012 - Found cast iron monument, verified position by VRS GPS methods and updated ties.

May 10, 2017 - Found cast iron monument. Set construction ties, updated corner ties and verified position by VRS GPS methods prior to road construction.

May 12, 2017 - Removed cast iron monument prior to road construction.

July 2017 - Replaced with a new cast iron monument after road construction and updated ties.

May 31, 2018 - Found cast iron monument, verified position by VRS GPS methods and updated ties.

September 29, 2021 - Found cast iron monument, verified position by VRS GPS methods and updated ties.

June 26, 2023 - Found cast iron monument, verified position by ACS RTK GPS method and updated ties.