

CERTIFICATE OF LOCATION OF GOVERNMENT CORNER

County of Anoka

State of Minnesota

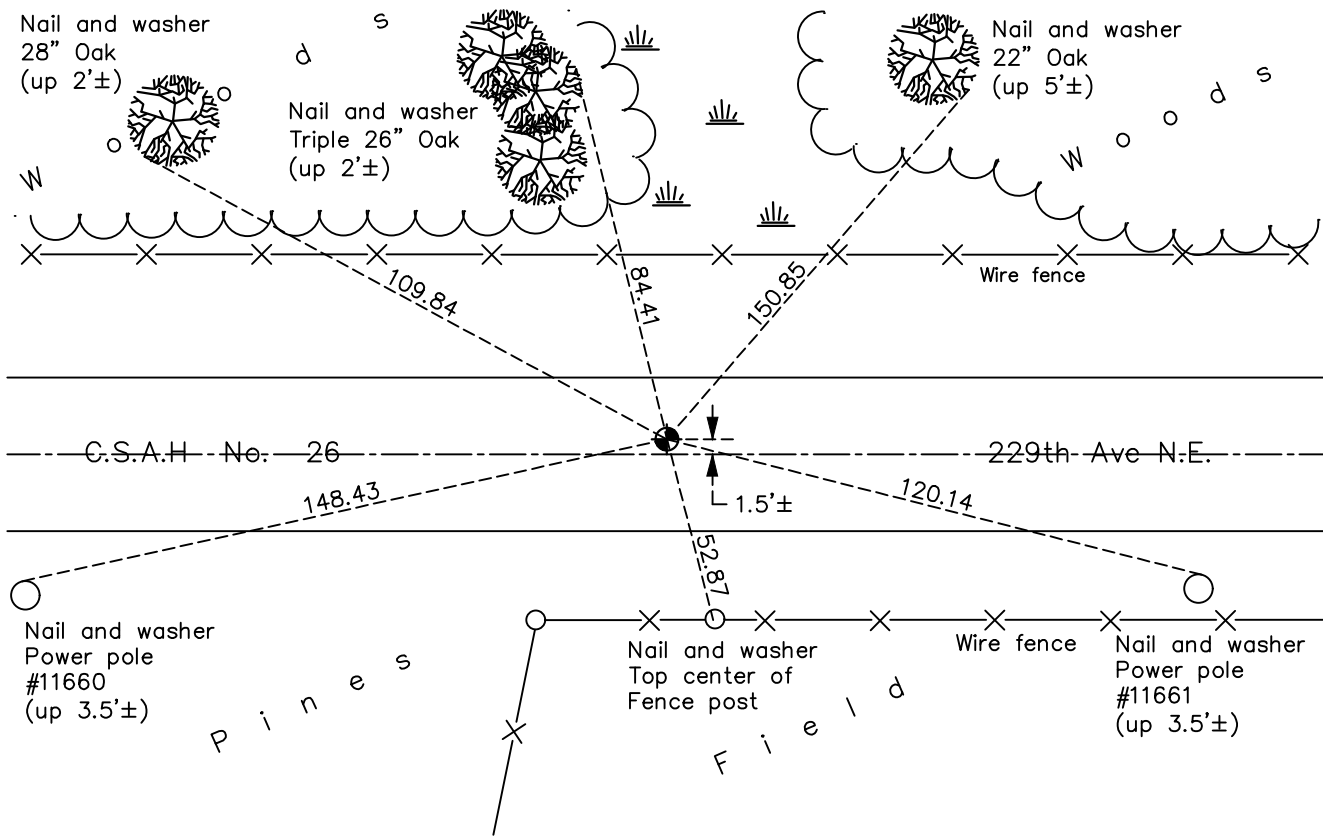
North 1/4 Corner of Sec. 2 Township 33 Range 23

On the 27th day of November, 1963, the described corner was evidenced by area resurvey

and to perpetuate the location of said corner, at the exact location thereof, a permanent marker was placed consisting of a cast iron monument

AND on the 26th day of June, 2023, said permanent marker was found flush and the ties were updated

Updated reference ties are as shown below.



Revision Date
10/09/2023

N.A.D. 1983 Coordinates
(1996 Adjustment)

County Project Coordinates	
Northing	<u>227583.2023</u>
Easting	<u>524110.0232</u>
Date	<u>3/26/02</u>

I hereby certify that this United States public land survey monument record is correct and complete to the best of my knowledge and belief.

David Zieglmeier Date 12/11/23

David Zieglmeier Anoka County Surveyor
 Minnesota License Number 46179

HISTORY OF GOVERNMENT CORNER

Page No. 4

County of Anoka

State of Minnesota

North 1/4 Corner of Sec. 2 Township 33 Range 23

CORNER HISTORY:

November 27, 1963 - Set cast iron monument flush using area resurvey and established ties to the monument.

July 20, 1967 - Found cast iron monument and updated ties.

June 16, 1970 - Found cast iron monument and updated ties.

August 12, 1971 - Found cast iron monument, raised and updated ties.

July 22, 1974 - Found cast iron monument and updated ties.

June 27, 1977 - Found cast iron monument and updated ties.

June 8, 1981 - Found cast iron monument and updated ties.

June 11, 1984 - Found cast iron monument and updated ties.

August 18, 1986 - Found cast iron monument and updated ties.

July 31, 1992 - Found cast iron monument and updated ties.

August 5, 1997 - Found cast iron monument and updated ties.

May 25, 2000 - Found cast iron monument and updated ties.

March 26, 2002- Found cast iron monument, established NAD 1983 (1996 adj.) Anoka County project coordinates by static GPS methods and updated ties.

April 25, 2013 - Found cast iron monument, verified position by VRS GPS methods and updated ties.

June 30, 2016 - Found cast iron monument, set construction ties, updated corner ties and verified position by VRS GPS methods prior to road construction.

October 2016 - Set cast iron monument after road construction, verified position by static and VRS GPS methods and corner ties.

May 3 2018 - Found cast iron monument flush, verified position by VRS GPS methods and updated the ties.

September 29, 2021 - Found cast iron monument flush, verified position by VRS GPS methods & updated ties.

June 26, 2023 - Found cast iron monument flush, verified position by ACS RTK GPS method & updated ties.