

# CERTIFICATE OF LOCATION OF GOVERNMENT CORNER

County of Anoka

State of Minnesota

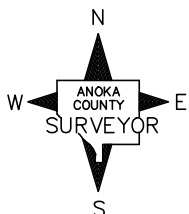
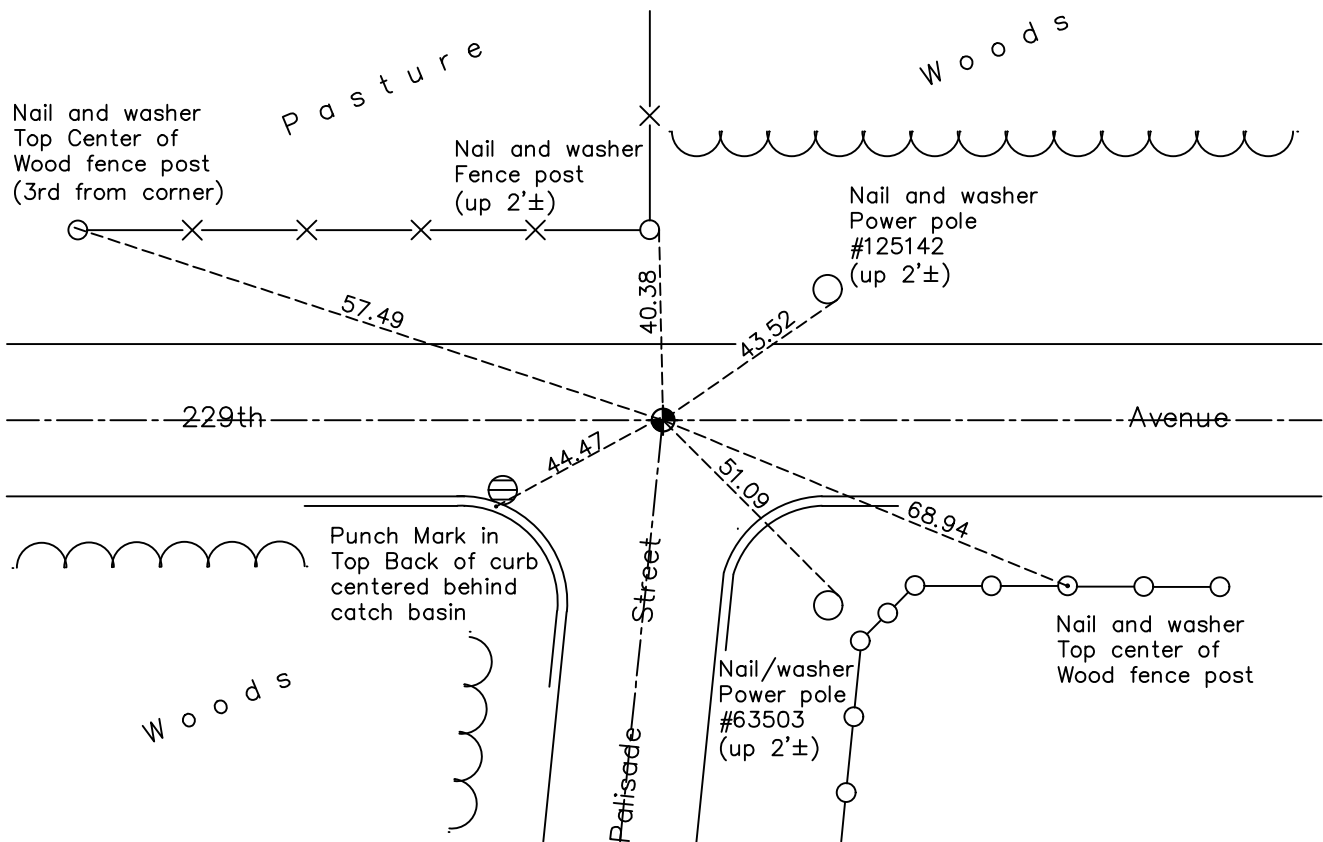
## North 1/4 Corner of Sec. 4 Township 33 Range 23

On the 3rd day of July, 1962, the described corner was evidenced by a concrete monument

and to perpetuate the location of said corner, at the exact location thereof, a permanent marker was placed consisting of a cast iron monument on centerline-centerline

AND on the 30th day of September, 2021, said permanent marker was found down 0.3'± and broken under new road surface. Removed and replaced with new cast iron monument. Updated ties.

Updated reference ties are as shown below.



Revision Date

1/07/2022

N.A.D. 1983 Coordinates  
(1996 Adjustment)

County Project Coordinates	
Northing	_____
Easting	_____
Date	<u>3/26/02</u>

I hereby certify that this United States public land survey monument record is correct and complete to the best of my knowledge and belief.

David Zieglmeier Date 1/19/23

David Zieglmeier Anoka County Surveyor  
Minnesota License Number 46179

# HISTORY OF GOVERNMENT CORNER

Page No. 7A

County of Anoka

State of Minnesota

North 1/4 Corner of Sec. 4 Township 33 Range 23

## **CORNER HISTORY:**

July 10, 1961 - Found a 4" concrete monument down 0.2' in center of intersection and set 1/2" iron pipe on north side. Established ties to the monument.

July 3, 1962 - Found concrete monument with iron pipe on the north side replaced with cast iron monument and updated ties.

May 1, 1992 - Found cast iron monument, set construction ties and removed monument prior to road construction.

August 14, 1992 - Set cast iron monument and updated ties after road construction.

December 28, 1992 - Found cast iron monument and updated ties.

August 4, 1997 - Found cast iron monument and updated ties.

May 25, 2000 - Found cast iron monument and updated ties.

March 26, 2002 - Found cast iron monument, established NAD 1983 (1996 adj.) Anoka County project coordinates by static GPS methods and updated ties.

July 24, 2012 - Found cast iron monument, verified position by VRS GPS methods and updated ties.

April 10, 2018 - Found cast iron monument flush, verified position by VRS GPS methods and updated ties.

September 30, 2021 - Found cast iron monument down 0.3'± and broken, under new layer of road surface. Removed and replaced with new cast iron monument, set flush to surface using construction ties. Updated ties.