

CERTIFICATE OF LOCATION OF GOVERNMENT CORNER

County of Anoka

State of Minnesota

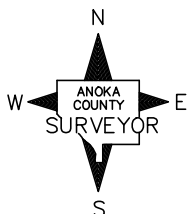
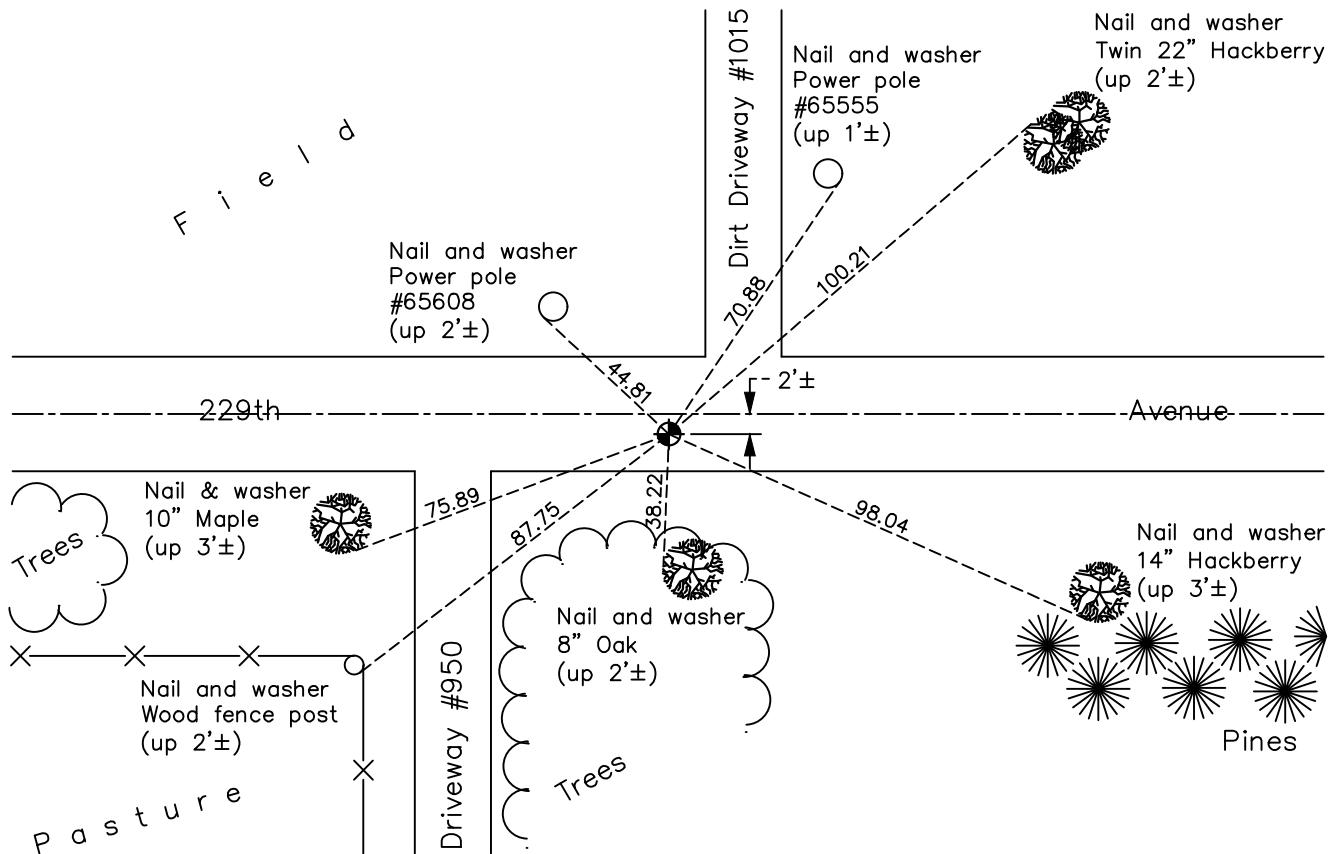
Northwest Corner of Sec. 5 Township 33 Range 23

On the 23rd day of July, 1974, the described corner was evidenced by a sandstone monument

and to perpetuate the location of said corner, at the exact location thereof, a permanent marker was placed consisting of a cast iron monument

AND on the 1st day of October, 2021, said permanent marker was found flush and the ties were updated

Updated reference ties are as shown below.



N.A.D. 1983 Coordinates
(1996 Adjustment)

County Project Coordinates

Northing 227421.7044

Easting 505690.8616

Date 5/20/02

Revision Date

1/07/2022

I hereby certify that this United States public land survey monument record is correct and complete to the best of my knowledge and belief.

David Zieglmeier Date 1/19/23

David Zieglmeier Anoka County Surveyor

Minnesota License Number 46179

HISTORY OF GOVERNMENT CORNER

Page No. 8

County of Anoka

State of Minnesota

Northwest Corner of Sec. 5 Township 33 Range 23

CORNER HISTORY:

January 27, 1959 - Found stone monument and updated ties.

September, 24, 1964 - Found 7" x 7" sandstone monument with chiseled "X" down 0.5'±. Placed 3/4" iron pipe on north side and updated the ties.

July 14, 1967 - Found sandstone monument and updated ties.

June 17, 1970 - Found sandstone monument and updated ties.

July 23, 1974 - Found sandstone monument down 0.5'± and set top 1/2 of cast iron monument over sandstone.

June 28, 1977 - Found cast iron monument and updated ties.

June 8, 1981 - Found cast iron monument and updated ties.

June 13, 1984 - Found cast iron monument and updated ties.

June 6, 1986 - Re-tied monument prior to road construction and removed monument.

May 27, 1994 - Set cast iron monument flush after resurvey and updated ties.

August 11, 1997 - Found cast iron monument and update ties.

August 3, 2000 - Found cast iron monument and updated ties.

May 20, 2002 - Found cast iron monument, established NAD 1983 (1996 adj.) Anoka County project coordinates by static GPS methods and updated ties.

April 17, 2006 - Found cast iron monument and updated ties.

January 2, 2013 - Found cast iron monument, verified position by VRS GPS methods and updated ties.

April 12, 2018 - Found cast iron monument, verified position by VRS GPS methods and updated ties.

October 1, 2021 - Found cast iron monument, verified position by VRS GPS methods and updated ties.