

# CERTIFICATE OF LOCATION OF GOVERNMENT CORNER

County of Anoka

State of Minnesota

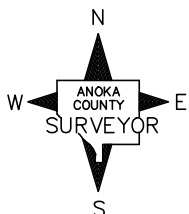
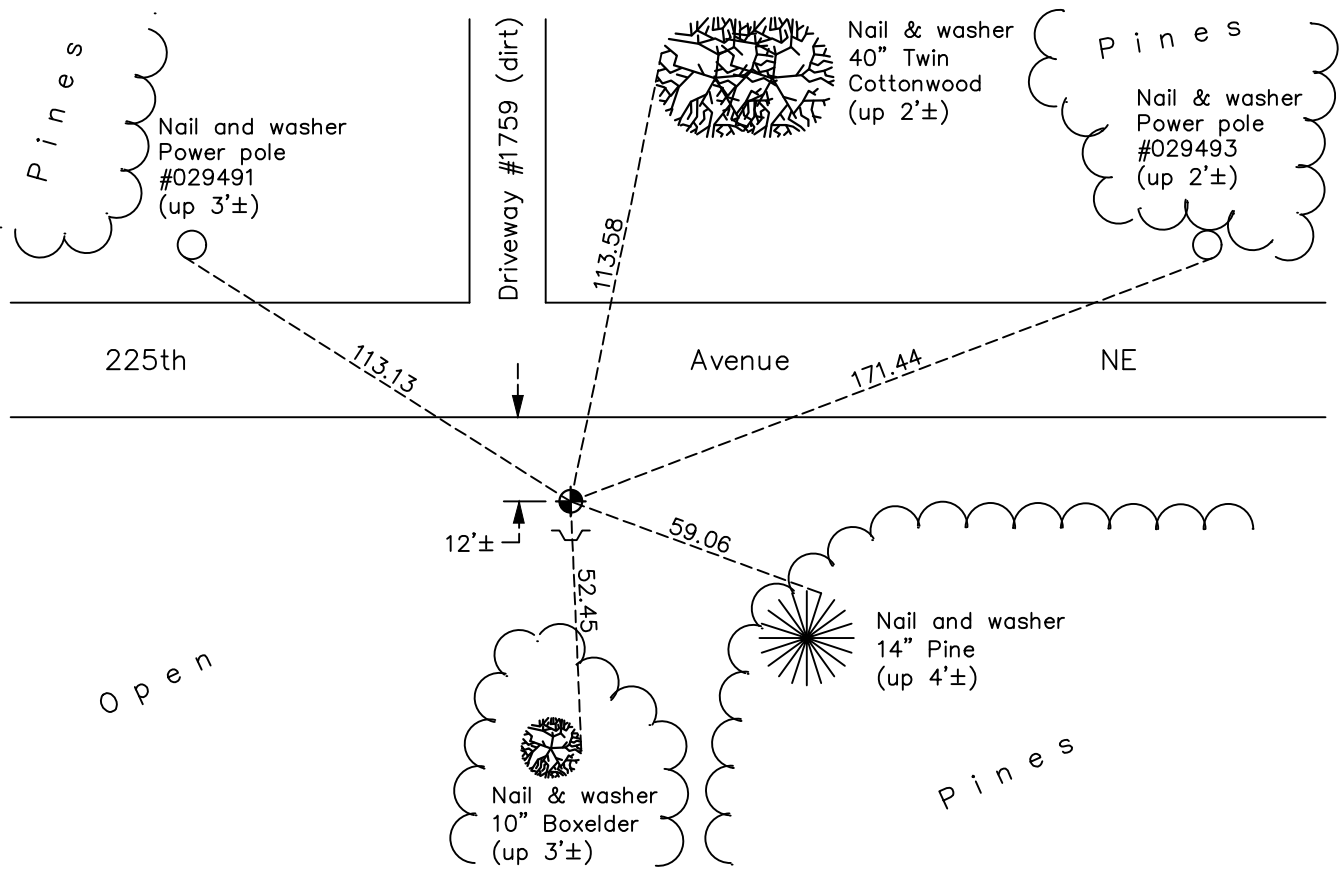
## West 1/4 Corner of Sec. 4 Township 33 Range 23

On the 5th day of August, 1968, the described corner was evidenced by a cast iron monument (labeled "Property Corner")

and to perpetuate the location of said corner, at the exact location thereof, a permanent marker was placed consisting of the same cast iron monument with a sign and post on the south side 12' off the edge of the road

AND on the 30th day of September, 2021, said permanent marker was found down 0.5'± and the ties were updated

Updated reference ties are as shown below.



Revision Date

1/07/2022

N.A.D. 1983 Coordinates  
(1996 Adjustment)

County Project Coordinates

Northing 224876.2893

Easting 510636.0941

Date 4/02/02

I hereby certify that this United States public land survey monument record is correct and complete to the best of my knowledge and belief.

David Zieglmeier Date 1/19/23

David Zieglmeier Anoka County Surveyor

Minnesota License Number 46179

# HISTORY OF GOVERNMENT CORNER

Page No. 11

County of Anoka

State of Minnesota

West 1/4 Corner of Sec. 4 Township 33 Range 23

## **CORNER HISTORY:**

August 5, 1968 - Found cast iron monument flush (labeled "property corner") and updated ties.

August 5, 1974 - Found cast iron monument down 0.2'± (labeled "property corner") and updated ties.

June 28, 1977 - Found cast iron monument and updated ties.

June 8, 1981 - Found cast iron monument and updated ties.

June 13, 1984 - Found cast iron monument and updated ties.

June 8, 1987 - Found cast iron monument and updated ties.

August 11, 1992 - Found cast iron monument and updated ties.

June 3, 1993 - Found cast iron monument and updated ties.

August 11, 1997 - Found cast iron monument and updated ties.

August 3, 2000 - Found cast iron monument and updated ties.

April 2, 2002 - Established NAD 1983 (1996 adj.) Anoka County project coordinates by static GPS methods.

August 30, 2012 - Found cast iron monument, verified position by VRS GPS methods and updated ties.

April 12, 2018 - Found cast iron monument, verified position by VRS GPS methods and updated ties.

September 30, 2021 - Found cast iron monument, verified position by VRS GPS methods and updated ties.