

# CERTIFICATE OF LOCATION OF GOVERNMENT CORNER

County of Anoka

State of Minnesota

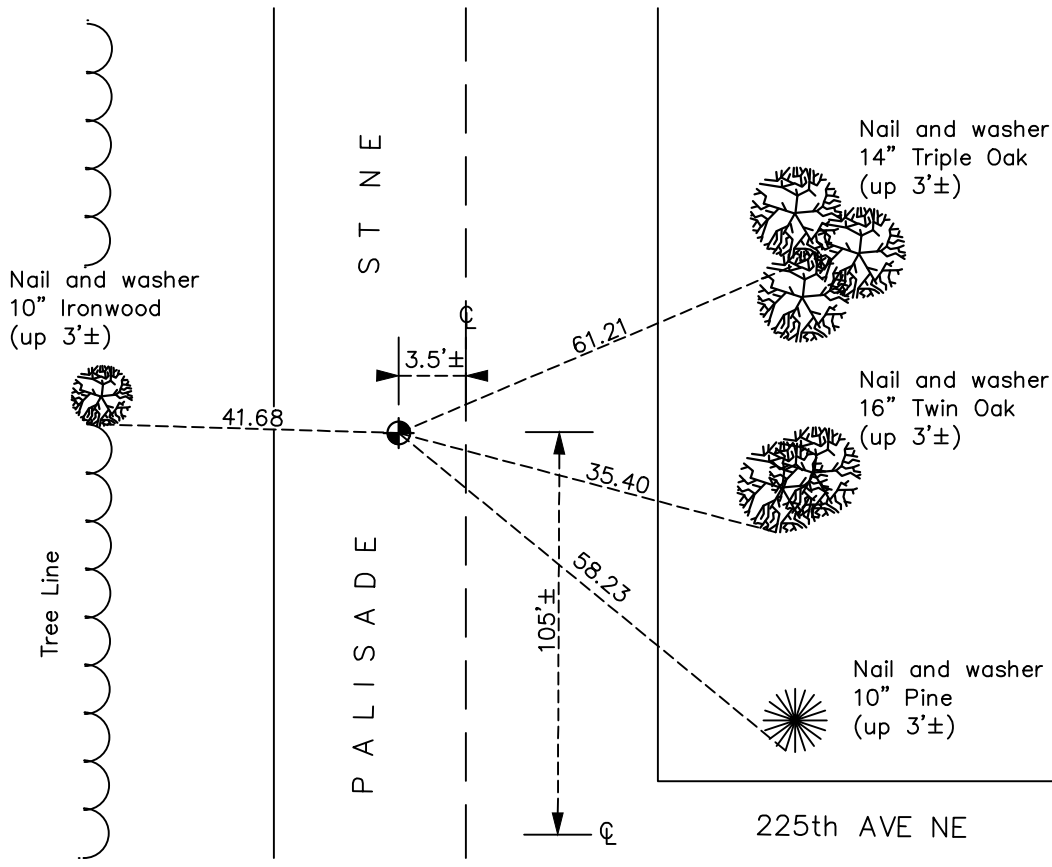
## Center Corner of Sec. 4 Township 33 Range 23

On the 5th day of August, 1968, the described corner was evidenced by an Iron Pipe found with historical N.C. Hoium's ties

and to perpetuate the location of said corner, at the exact location thereof, a permanent marker was placed consisting of Cast Iron Monument

AND on the 29th day of June, 2023, said permanent marker was found down 1.7'. Postion verified by ACS RTK GPS. Added partial CIM on top of existing position, set flush. Ties established.

Updated reference ties are as shown below.



Revision Date  
 10/04/2023

N.A.D. 1983 Coordinates  
 (2011 Adjustment)

County Project Coordinates	
Northing	<u>224838.847</u>
Easting	<u>513287.775</u>
Date	<u>6/29/2023</u>

I hereby certify that this United States public land survey monument record is correct and complete to the best of my knowledge and belief.

*David Zieglsmeier* Date 12/11/23

David M. Zieglsmeier, Anoka County Surveyor  
 Minnesota License Number 46179

# HISTORY OF GOVERNMENT CORNER

Page No. 12

County of Anoka

State of Minnesota

Center Corner of Sec. 4 Township 33 Range 23

## **CORNER HISTORY:**

August 5, 1968 - Replaced Iron Pipe found with historical N.C. Hoium's ties with a cast iron monument set down 0.5'± and updated the ties.

June 8, 1981; June 18, 1984 - Found cast iron monument and updated ties

June 29, 2023 - Found cast iron monument down 1.7'. Position verified by ACS RTK GPS method. Added partial CIM on top of existing position, set flush. Ties established as no historical ties were found.