

CERTIFICATE OF LOCATION OF GOVERNMENT CORNER

County of Anoka

State of Minnesota

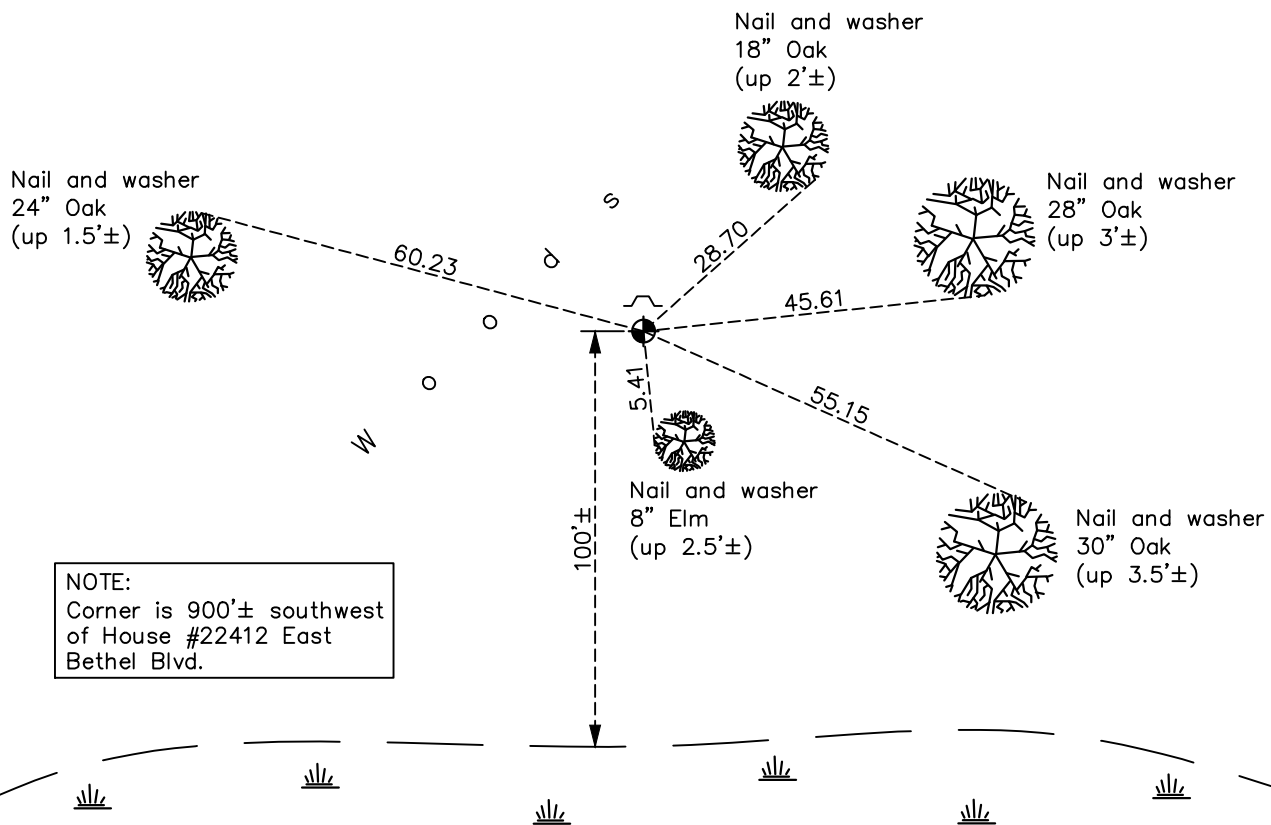
Witness Corner of Sec. 3 Township 33 Range 23
(on east line of SE 1/4)

On the 8th day of February, 1984, the described corner was evidenced by area resurvey

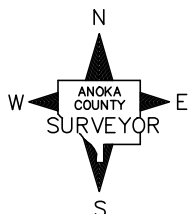
and to perpetuate the location of said corner, at the exact location thereof, a permanent marker was placed consisting of a cast iron monument with a sign and post on the north side

AND on the 1st day of November, 2021, said permanent marker was found flush and the ties were updated (sign/post only up 1')

Updated reference ties are as shown below.



NOTE:
 Corner is 900'± southwest
 of House #22412 East
 Bethel Blvd.



Revision Date
 1/07/2022

N.A.D. 1983 Coordinates
 (1996 Adjustment)

County Project Coordinates	
Northing	<u>223492.8741</u>
Easting	<u>521112.6879</u>
Date	<u>3/12/03</u>

I hereby certify that this United States public land survey monument record is correct and complete to the best of my knowledge and belief.
David Zieglmeier Date 1/19/23
 David Zieglmeier Anoka County Surveyor
 Minnesota License Number 46179

HISTORY OF GOVERNMENT CORNER

Page No. 14A

County of Anoka

State of Minnesota

Witness Corner of Sec. 3 Township 33 Range 23
(on east line of SE 1/4)

CORNER HISTORY:

February 8, 1984 - Set cast iron monument using area resurvey and established ties to monument.

March 3, 2003 - Found cast iron monument and updated ties.

March 12, 2003 - Established NAD 1983 (1996 adj.) Anoka County project coordinates by static GPS methods.

January 18, 2013 - Found cast iron monument, verified position by VRS GPS methods and updated ties.

June 4, 2018 - Found cast iron monument flush and updated ties.

November 1, 2021 - Found cast iron monument, verified position by VRS GPS methods and updated ties.