

# CERTIFICATE OF LOCATION OF GOVERNMENT CORNER

County of Anoka

State of Minnesota

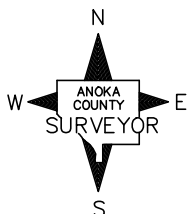
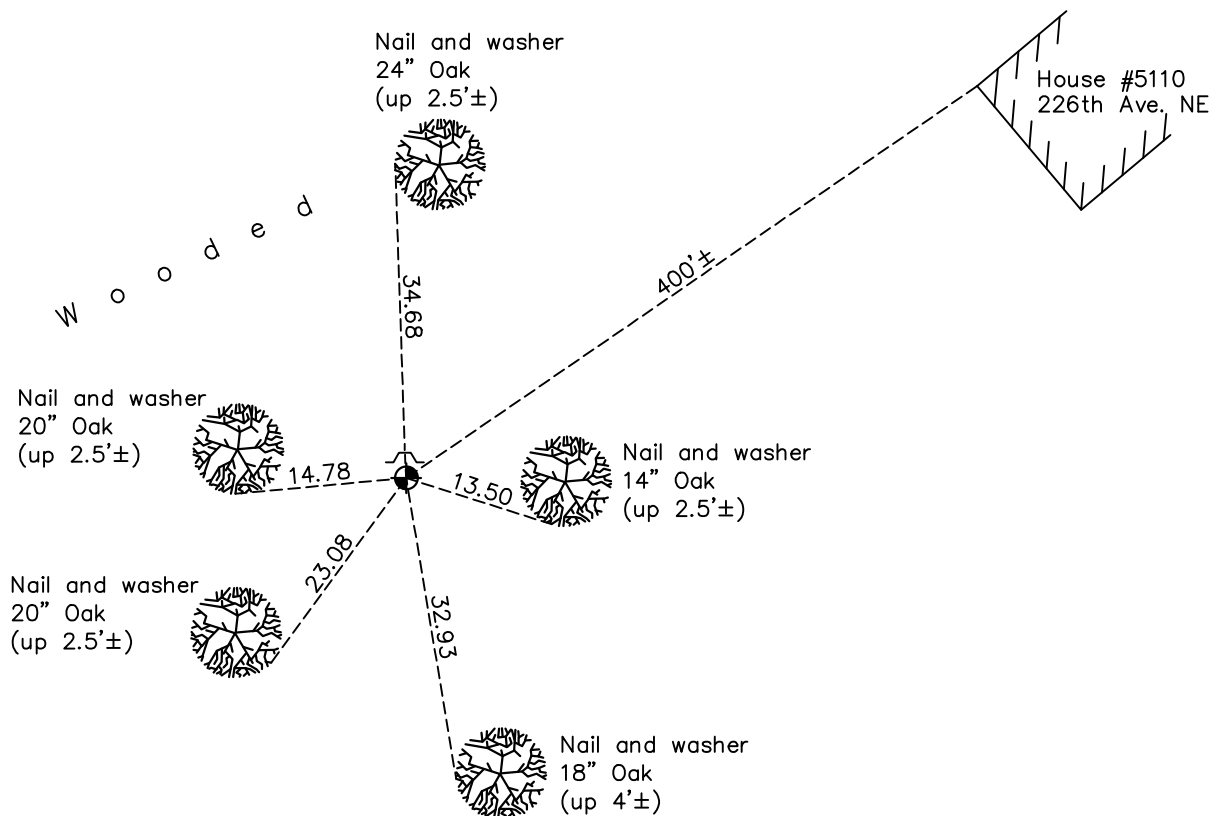
## East 1/4 Corner of Sec. 1 Township 33 Range 23

On the 27th day of March, 1974, the described corner was evidenced by a 1/2" iron pipe from area resurvey

and to perpetuate the location of said corner, at the exact location thereof, a permanent marker was placed consisting of a cast iron monument with a sign and post on the north side

AND on the 22nd day of October, 2021, said permanent marker was found flush and the ties were updated

Updated reference ties are as shown below.



Revision Date

1/07/2022

N.A.D. 1983 Coordinates  
(1996 Adjustment)

County Project Coordinates

Northing 224691.5182

Easting 531757.6353

Date 3/03/03

I hereby certify that this United States public land survey monument record is correct and complete to the best of my knowledge and belief.

David Zieglmeier Date 1/19/23

David Zieglmeier Anoka County Surveyor

Minnesota License Number 46179

# HISTORY OF GOVERNMENT CORNER

Page No. 16

County of Anoka

State of Minnesota

East 1/4 Corner of Sec. 1 Township 33 Range 23

## **CORNER HISTORY:**

March 27, 1974 - Set 1/2" iron pipe flush using area resurvey and established ties to the monument.

August 9, 1974 - Replaced 1/2" iron pipe with cast iron monument flush.

January 28, 1992 - Found cast iron monument and updated ties.

August 27, 1992 - Found cast iron monument and updated ties.

March 3, 2003 - Established NAD 1983 (1996 adj.) Anoka County project coordinates by static GPS methods.

January 14, 2013 - Found cast iron monument and updated ties.

May 3, 2018 - Found cast iron monument flush and updated ties.

October 22, 2021 - Found cast iron monument flush, verified position by VRS GPS methods and updated ties.