

CERTIFICATE OF LOCATION OF GOVERNMENT CORNER

County of Anoka

State of Minnesota

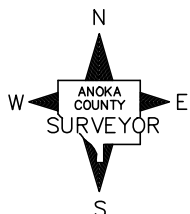
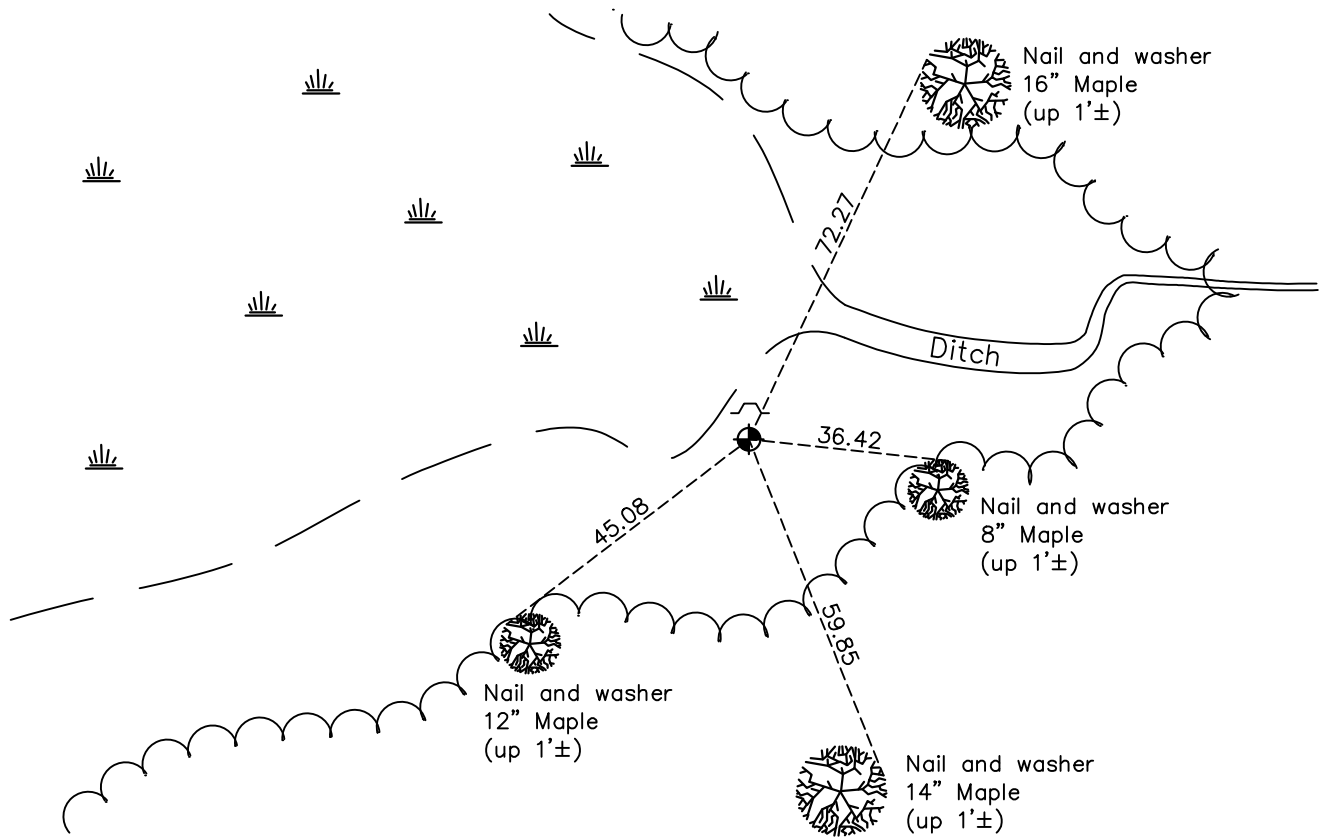
South 1/4 Corner of Sec. 1 Township 33 Range 23

On the 26th day of March, 1974, the described corner was evidenced by area resurvey

and to perpetuate the location of said corner, at the exact location thereof, a permanent marker was placed consisting of a cast iron monument with a sign and post on the north side

AND on the 18th day of March, 2022, said permanent marker was found down 0.2'± and the ties were updated

Updated reference ties are as shown below.



Revision Date

3/30/2022

N.A.D. 1983 Coordinates
(1996 Adjustment)

County Project Coordinates

Northing 222106.3129

Easting 528888.2005

Date 3/03/03

I hereby certify that this United States public land survey monument record is correct and complete to the best of my knowledge and belief.

David Zieglmeier Date 1/19/23

David Zieglmeier Anoka County Surveyor

Minnesota License Number 46179

HISTORY OF GOVERNMENT CORNER

Page No. 18

County of Anoka

State of Minnesota

South 1/4 Corner of Sec. 1 Township 33 Range 23

CORNER HISTORY:

March 26, 1974 - Set cast iron monument flush using area resurvey and established ties to monument.

July 23, 1974 - Found cast iron monument and updated ties.

June 28, 1977 - Found cast iron monument and updated ties.

July 3, 1984 - Found cast iron monument and updated ties.

June 9, 1987 - Found cast iron monument and updated ties.

August 27, 1992 - Found cast iron monument and updated ties.

March 3, 2003 - Established NAD 1983 (1996 adj.) Anoka County project coordinates by static GPS methods.

January 29, 2013 - Found cast iron monument, verified position by VRS GPS methods and updated ties.

March 18, 2022 - Found cast iron monument, verified position by VRS GPS methods and updated ties.