

# CERTIFICATE OF LOCATION OF GOVERNMENT CORNER

County of Anoka

State of Minnesota

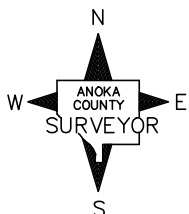
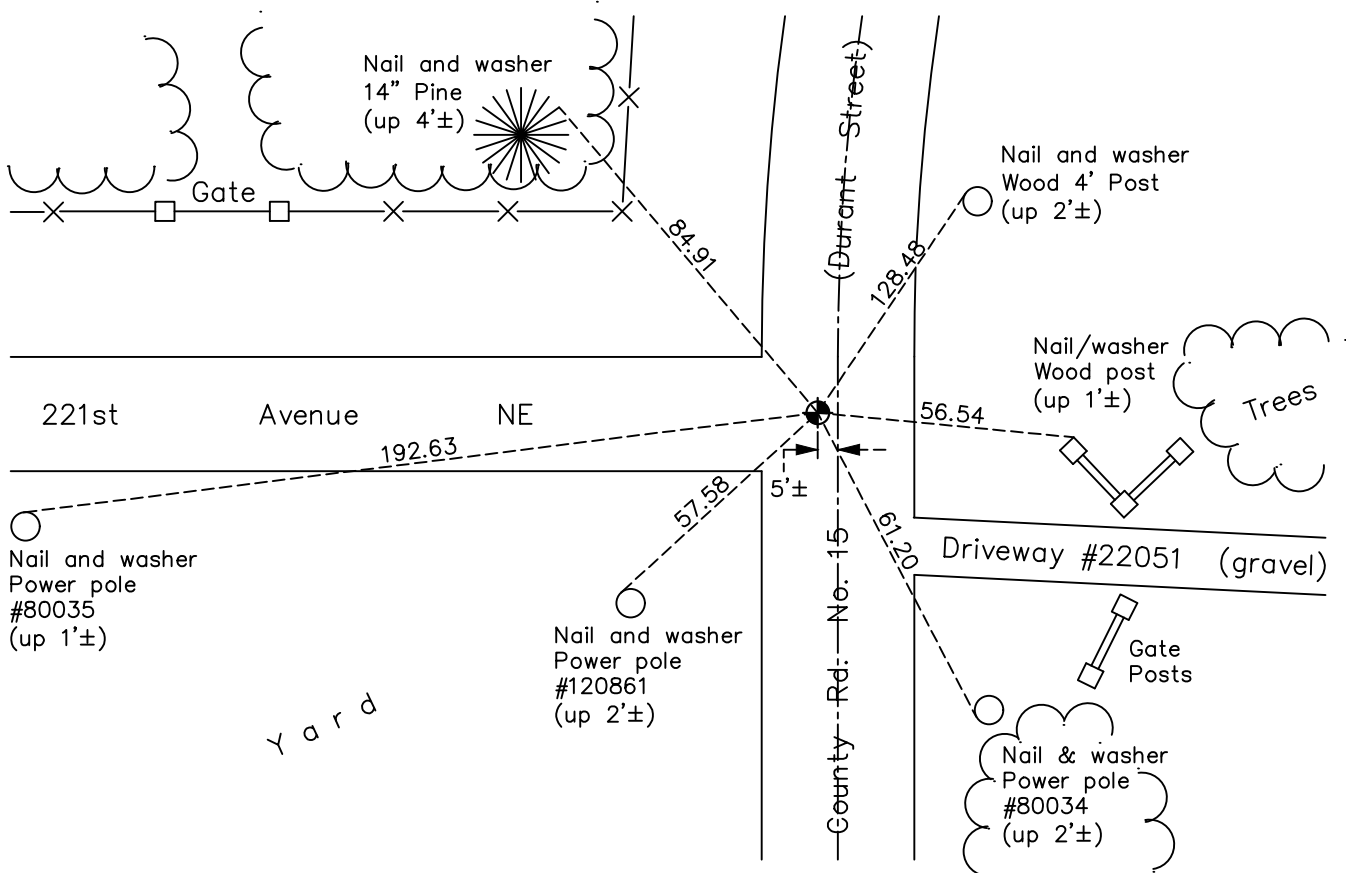
## Northeast Corner of Sec. 11 Township 33 Range 23

On the 3rd day of August, 1964, the described corner was evidenced by a 3/4" iron pipe from area resurvey

and to perpetuate the location of said corner, at the exact location thereof, a permanent marker was placed consisting of a cast iron monument

AND on the 4th day of October, 2021, said permanent marker was found flush and the ties were updated.

Updated reference ties are as shown below.



Revision Date

1/07/2022

N.A.D. 1983 Coordinates  
(1996 Adjustment)

County Project Coordinates	
Northing	<u>222151.0570</u>
Easting	<u>526180.8702</u>
Date	<u>4/02/02</u>

I hereby certify that this United States public land survey monument record is correct and complete to the best of my knowledge and belief.

David Zieglmeier Date 1/19/23

David Zieglmeier Anoka County Surveyor  
Minnesota License Number 46179

# HISTORY OF GOVERNMENT CORNER

Page No. 19

County of Anoka

State of Minnesota

## Northeast Corner of Sec. 11 Township 33 Range 23

### **CORNER HISTORY:**

November 8, 1963 - Set 3/4" iron pipe down 0.3'± using area resurvey and established ties to the monument.

August 3, 1964 - Replaced 3/4" iron pipe with cast iron monument and updated ties.

June 16, 1970 - Found cast iron monument flush and updated ties.

September 19, 1973 - Found cast iron monument, raised and updated ties.

July 23, 1974 - Found cast iron monument and updated ties.

June 28, 1977 - Found cast iron monument and updated ties.

June 9, 1981 - Found cast iron monument and updated ties.

June 12, 1984 - Found cast iron monument and updated ties.

August 21, 1986 - Found cast iron monument and updated ties.

August 4, 1992 - Found cast iron monument and updated ties.

August 11, 1997 - Found cast iron monument and updated ties.

July 27, 2000 - Found cast iron monument and updated ties.

April 2, 2002 - Established NAD 1983 (1996 adj.) Anoka County project coordinates by static GPS methods.

April 25, 2012 - Found cast iron monument broken, using center of fins of broken monument position was checked by VRS GPS methods and corner ties.

April 27, 2012 - Broken monument position (center of fins) checked by static GPS methods.

April 2012 - Replaced broken monument with new cast iron monument and updated ties.

May 15, 2013 - Found cast iron monument, verified position by VRS GPS methods and updated ties. Loosened monument top for road overlay.

April 18, 2018 - Found cast iron monument flush, verified position by VRS GPS methods and updated ties.

October 4, 2021 - Found cast iron monument flush, verified position by VRS GPS methods and updated ties.