

CERTIFICATE OF LOCATION OF GOVERNMENT CORNER

County of Anoka

State of Minnesota

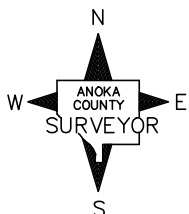
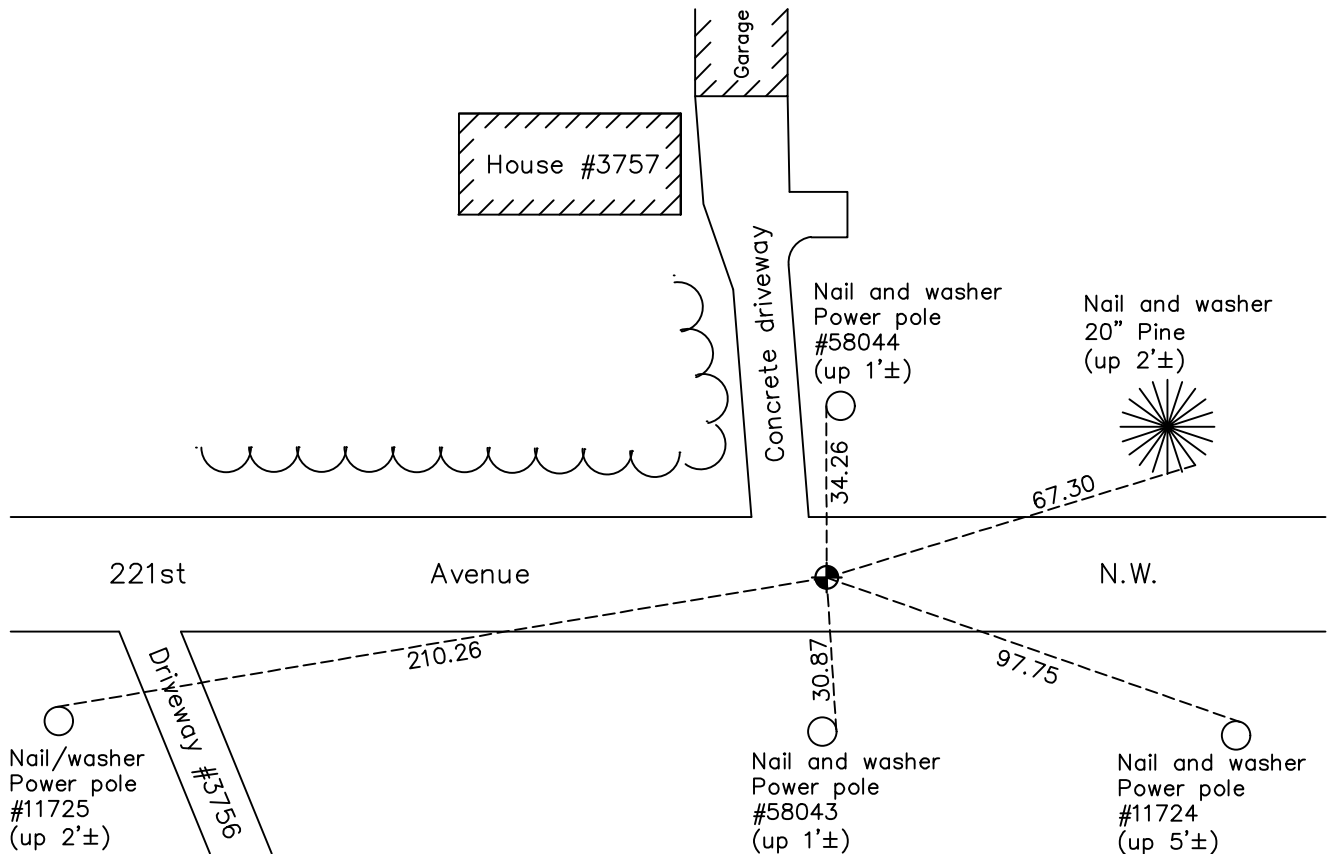
North $\frac{1}{4}$ Corner of Sec. 11 Township 33 Range 23

On the 27th day of November, 1963, the described corner was evidenced by area resurvey

and to perpetuate the location of said corner, at the exact location thereof, a permanent marker was placed consisting of a cast iron monument

AND on the 4th day of October, 2021, said permanent marker was found flush and the ties were updated

Updated reference ties are as shown below.



Revision Date

12/02/2021

N.A.D. 1983 Coordinates
(1996 Adjustment)

County Project Coordinates

Northing 222185.2158

Easting 523591.1584

Date 4/02/02

I hereby certify that this United States public land survey monument record is correct and complete to the best of my knowledge and belief.

David Zieglmeier Date 1/19/23

David Zieglmeier Anoka County Surveyor

Minnesota License Number 46179

HISTORY OF GOVERNMENT CORNER

Page No. 20

County of Anoka

State of Minnesota

North 1/4 Corner of Sec. 11 Township 33 Range 23

CORNER HISTORY:

November 27, 1963 - Set cast iron monument down 0.5' using area resurvey and established ties to monument.

June 17, 1970 - Found cast iron monument down 1.5'± and updated ties.

July 22, 1974 - Found cast iron monument and updated ties.

June 28, 1977 - Found cast iron monument and updated ties.

June 9, 1981 - Found cast iron monument and updated ties.

June 12, 1984 - Found cast iron monument and updated ties.

June 1, 1987 - Found cast iron monument and updated ties.

August 10, 1992 - Found cast iron monument and updated ties.

August 7, 1997 - Found cast iron monument and updated ties.

October 15, 1999 - Found solid cast iron monument, set construction ties and removed prior to road construction. Set a removable top cast iron monument and updated ties after road construction.

April 2, 2002 - Established NAD 1983 (1996 adj.) Anoka County project coordinates by static GPS methods.

April 26, 2012 - Found cast iron monument, verified position by VRS GPS methods and updated ties.

April 17, 2018 - Found cast iron monument flush, verified position by VRS GPS methods and updated ties.

October 4, 2021 - Found cast iron monument flush, verified position by VRS GPS methods and updated ties.