

CERTIFICATE OF LOCATION OF GOVERNMENT CORNER

County of Anoka

State of Minnesota

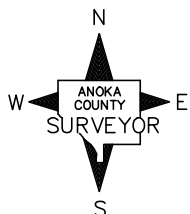
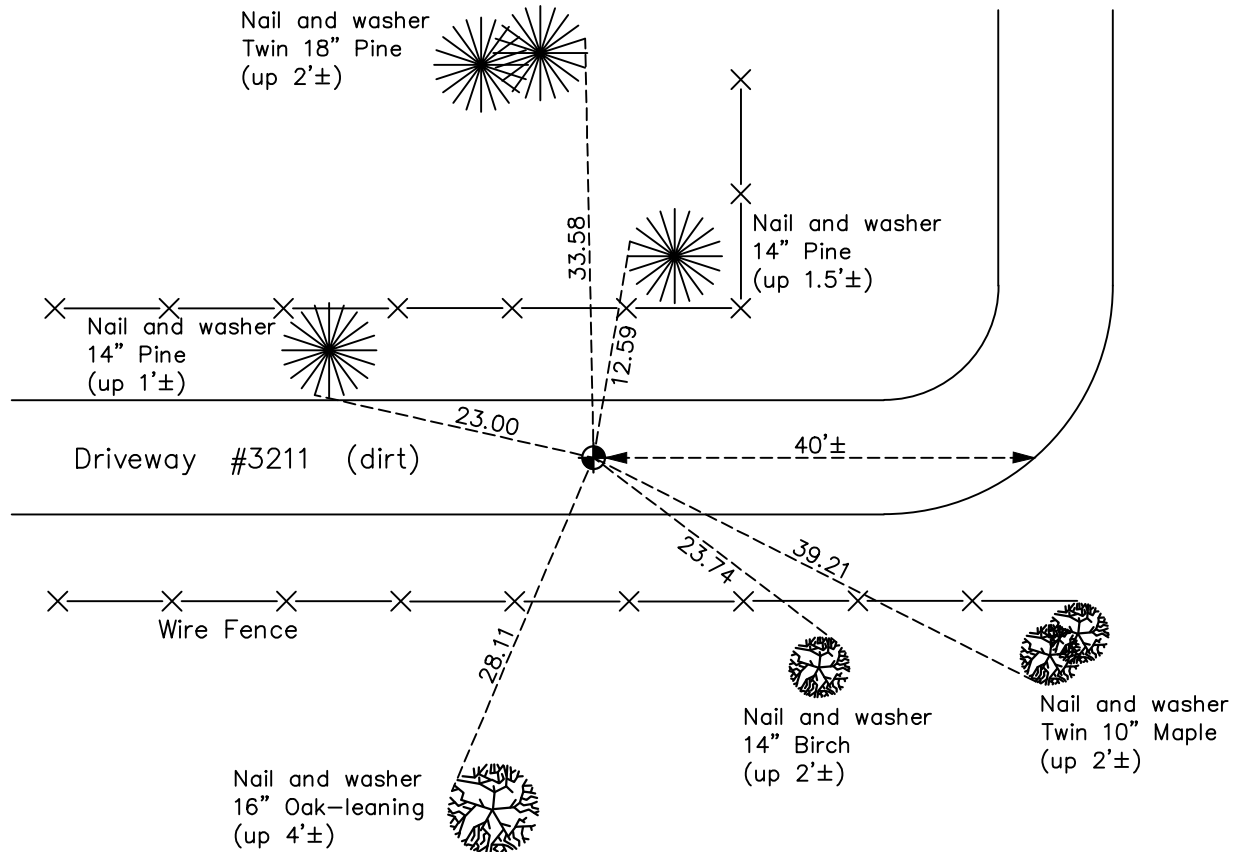
Witness Corner of Sec. 3 Township 33 Range 23
(on south line of SE 1/4)

On the 8th day of February, 1984, the described corner was evidenced by area resurvey

and to perpetuate the location of said corner, at the exact location thereof, a permanent marker was placed consisting of a cast iron monument

AND on the 4th day of October, 2021, said permanent marker was found down 0.6' ± and the ties were updated.

Updated reference ties are as shown below.



Revision Date

1/07/2022

N.A.D. 1983 Coordinates
(1996 Adjustment)

County Project Coordinates	
Northing	<u>222188.4717</u>
Easting	<u>519228.9300</u>
Date	<u>7/02/02</u>

I hereby certify that this United States public land survey monument record is correct and complete to the best of my knowledge and belief.

David Zieglmeier Date 1/19/23

David Zieglmeier Anoka County Surveyor
Minnesota License Number 46179

HISTORY OF GOVERNMENT CORNER

Page No. 22A

County of Anoka

State of Minnesota

Witness Corner of Sec. 3 Township 33 Range 23
(on south line of SE 1/4)

CORNER HISTORY:

February 8, 1984 - Set cast iron monument using area resurvey. Established ties to monument.

June 9, 1987 - Found cast iron monument and updated ties.

August 24, 1992 - Found cast iron monument and updated ties.

July 27, 2000 - Found cast iron monument and updated ties.

July 2, 2002 - Found cast iron monument and updated ties. Established NAD 1983 (1996 adj.) Anoka County project coordinates by static GPS methods.

July 26, 2012 - Found cast iron monument and updated ties.

June 1, 2018 - Found cast iron monument broken and $\pm 0.3'$. Checked position center fin against corner ties.

April 24, 2019 - Replaced broken monument with a cast iron monument down $0.6'\pm$ using static GPS methods. Updated ties.

October 4th, 2021 - Found cast iron monument and updated ties.