

CERTIFICATE OF LOCATION OF GOVERNMENT CORNER

County of Anoka

State of Minnesota

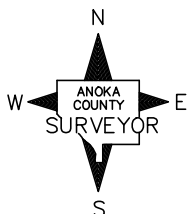
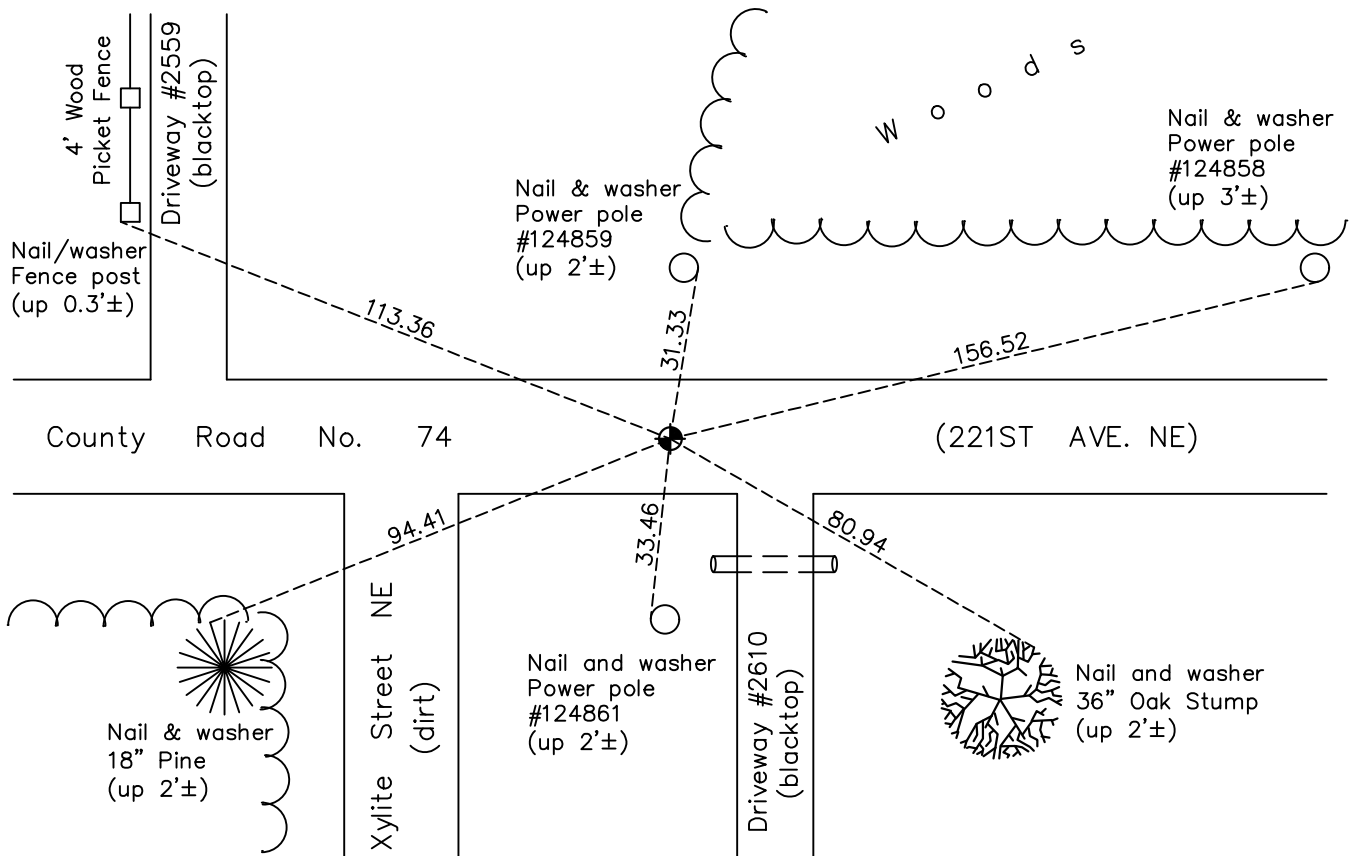
Northeast Corner of Sec. 9 Township 33 Range 23

On the 30th day of April, 1957, the described corner was evidenced by a concrete monument set by the Highway Department

and to perpetuate the location of said corner, at the exact location thereof, a permanent marker was placed consisting of a cast iron monument

AND on the 6th day of October, 2021, said permanent marker was found flush and the ties were updated

Updated reference ties are as shown below.



Revision Date

1/07/2022

N.A.D. 1983 Coordinates
(1996 Adjustment)

County Project Coordinates	
Northing	<u>222171.9048</u>
Easting	<u>515705.5851</u>
Date	<u>4/03/02</u>

I hereby certify that this United States public land survey monument record is correct and complete to the best of my knowledge and belief.

David Zieglmeier Date 1/19/23

David Zieglmeier Anoka County Surveyor
Minnesota License Number 46179

HISTORY OF GOVERNMENT CORNER

Page No. 23

County of Anoka

State of Minnesota

Northeast Corner of Sec. 9 Township 33 Range 23

CORNER HISTORY:

April 30, 1957 - Set concrete monument down 0.5' and established ties to the monument.

February 23, 1962 - Found concrete monument down 0.5' with iron pipe on top and updated ties.

September 22, 1964 - Found concrete monument down 0.5' with iron pipe on top and updated ties.

September 17, 1969 - Replaced iron pipe over broken concrete(down 1.5'±) with a cast iron monument flush and updated ties.

July 22, 1974 - Found cast iron monument and updated ties.

June 29, 1977 - Found cast iron monument and updated ties.

June 9, 1981 - Found cast iron monument and updated ties.

June 12, 1984 - Found cast iron monument and updated ties.

June 1, 1987 - Found cast iron monument and updated ties.

July 10, 1993 - Found cast iron monument and updated ties.

August 4, 1997 - Found cast iron monument and updated ties.

July 27, 2000 - Found cast iron monument and updated ties.

April 3, 2002 - Established NAD 1983 (1996 adj.) Anoka County project coordinates by static GPS methods.

August 30, 2012 - Found cast iron monument. Verified position by VRS GPS methods. Updated ties.

July 8, 2015 - Found cast iron monument in good condition and loosened monument top prior to road overlay.

October 20, 2015 - Raised cast iron monument top flush after road overlay and updated ties.

April 13, 2018 - Found cast iron monument flush. Verified position by VRS GPS methods. Updated ties.

October 6, 2021 - Found cast iron monument flush. Verified position by VRS GPS methods. Updated ties.